



BMC - Ø 80.255

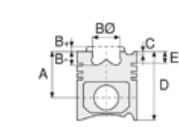
87-71605-STD



**Motor Özellikleri**  
(Engine Specifications)

İmalatçı (Manufacturer):  
BMC  
Çap (Diameter): 80.255  
FM Grup No: 1305

9.731,1.8VD  
4 Sil. Dizel 1800cc  
38.3/37 Kw (50/52PS)  
22,3:1  
J4-1000 FURGON SAVA,  
SHERPA 185,  
SHERPA 220,  
SHERPA 240,  
SHERPA 250  
1975...



**Piston Ölçüleri**  
(Piston Dimensions)

A : 50.350  
B- : 1.390  
D : 89.920  
E : 12.650

Pim: 25,4 x 67,92



**Piston Özellikleri**  
(Piston Features)

Segman Taşıyıcı  
(Ring Carrier)  
Çelik Plaka  
(Steel Strut)  
Gözarası Düz  
(Flat Eye Gap)



**Piston Parça No**  
(Piston Part No)

87-703100-02  
87-71605-STD

87-703100-03  
87-71605-STD1  
0,30mm Kısa



**Segman Seti**  
(Ring Set)

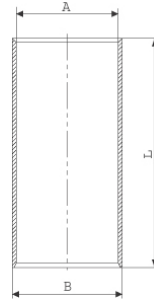
06-703100-00-STD

1.990 CRP KV1  
1.990 P STD  
4.000 CRP STD

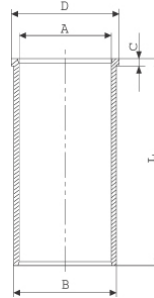


**Silindir Gömleği**  
(Liner)

14-010070-00 D  
B : 83.000  
L : 152.000

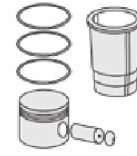


14-020080-00 D  
B : 83.000  
L : 152.000  
D : 84.000  
C : 5.000

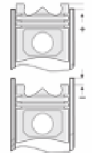


14-020081-00 D  
B : 84.000  
L : 152.000  
D : 85.000  
C : 5.000

Dış Çap 1,00mm Farklı  
(Outer Diameter  
1,00mm Different)



**Silindir Kit**  
(Assembly Set)



**Piston - Blok Montaj**  
Yüksekliği  
(Piston - Block  
Assembly Height)

+0,33 / +0,53



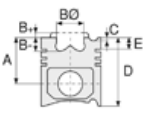


BMC - Ø 82.5

87-71605-STD



**Motor Özellikleri**  
(Engine Specifications)



**Piston Ölçüleri**  
(Piston Dimensions)



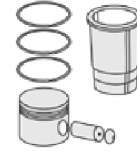
**Piston Parça No**  
(Piston Part No)



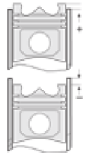
**Segman Seti**  
(Ring Set)



**Silindir Gömleği**  
(Liner)



**Silindir Kit**  
(Assembly Set)



**Piston - Blok Montaj**  
**Yüksekliği**  
(Piston - Block  
Assembly Height)

14-020082-00 D  
B : 83.500  
L : 152.000  
D : 84.500  
C : 5.000

Dış Çap 0,50mm Farklı  
(Outer Diameter  
0,50mm Different)

14-020083-00 D  
B : 84.500  
L : 152.000  
D : 84.500  
C : 5.000

Dış Çap 1,50mm Farklı  
(Outer Diameter  
1,50mm Different)

