



BMC - Ø 73,025

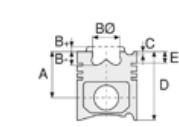
87-71609-STD



Motor Özellikleri
(Engine Specifications)

İmalatçı (Manufacturer):
BMC
Çap (Diameter): 73,025
FM Grup No: 1302

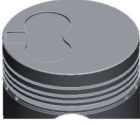
A50/A55
4 Sil. Dizel 1489cc
29,5Kw (40PS) 23:1
J2M16, JM10, JU250,
MARRIX OXFORD
1963...



Piston Ölçüleri
(Piston Dimensions)

A : 46.000
B- : 2.300
D : 85.700
E : 10.300

Pim: 25,4 x 60,45



Piston Özellikleri
(Piston Features)

Gözarası Düz
(Flat Eye Gap)



Piston Parça No
(Piston Part No)

87-105800-02
87-71609-STD



Segman Seti
(Ring Set)

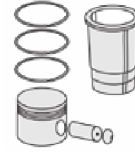
06-105800-10-STD

1.990 CRP KVI
1.900 P STD
1.900 P STD
3.947 CRP STD
3.947 P STD

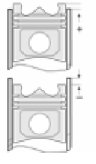


Silindir Gömleği
(Liner)

14-020040-00 D
B : 77.000
L : 163.500
D : 78.060
C : 5.000



Silindir Kit
(Assembly Set)



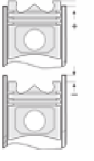
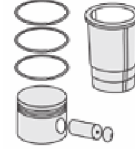
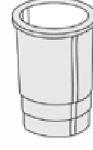
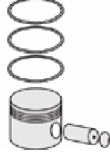
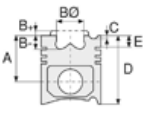
Piston - Blok Montaj
Yüksekliği
(Piston - Block
Assembly Height)





BMC - Ø 80,25

87-71606-STDA



Motor Özellikleri
(Engine Specifications)

İmalatçı (Manufacturer):
BMC
Çap (Diameter): 80,25
FM Grup No: 1307

4 Sil. Dizel 1798cc
59Kw (90PS)
LEVEND 80 Tdi
2001...

Piston Ölçüleri
(Piston Dimensions)

A : 50.800
B- : 12.100
BØ : 40.000
BX : 4.000
D : 79.800
E : 10.350

Pim: 28 x 66



Piston Özellikleri
(Piston Features)

Segman Taşıyıcı
(Ring Carrier)
Çelik Plaka
(Steel Strut)
Yağ Püskürtme Oyuğu
(Oil Jet Cut-out)
Gözarası Konik
(Conical Eye Gap)

Piston Parça No
(Piston Part No)

87-800400-12
87-71606-STDA

Segman Seti
(Ring Set)

06-800400-90-STD

2.500 CKP KV1
2.000 CR STD
3.000 CR STD

Silindir Gömleği
(Liner)

Silindir Kit
(Assembly Set)

Piston - Blok Montaj
Yüksekliği
(Piston - Block
Assembly Height)

+0,70 / +0,80





BMC - Ø 82.5

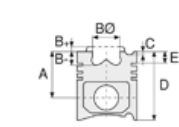
87-71605-STD



Motor Özellikleri
(Engine Specifications)

İmalatçı (Manufacturer):
BMC
Çap (Diameter): 82,5
FM Grup No: 1305

9.731,1.8VD
4 Sil. Dizel 1800cc
38.3/37 Kw (50/52PS)
22,3:1
J4-1000 FURGON SAVA,
SHERPA 185,
SHERPA 220,
SHERPA 240,
SHERPA 250
1975...



Piston Ölçüleri
(Piston Dimensions)

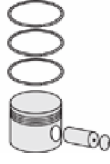
A : 50.350
B- : 1.390
D : 89.920
E : 12.650

Pim: 25,4 x 67,92



Piston Özellikleri
(Piston Features)

Segman Taşıyıcı
(Ring Carrier)
Çelik Plaka
(Steel Strut)
Gözarası Düz
(Flat Eye Gap)



Piston Parça No
(Piston Part No)

87-703100-02
87-71605-STD

87-703100-03
87-71605-STD1
0,30mm Kısa



Segman Seti
(Ring Set)

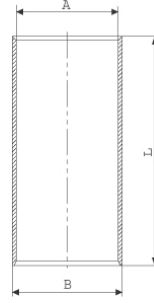
06-703100-00-STD

1.990 CRP KV1
1.990 P STD
4.000 CRP STD

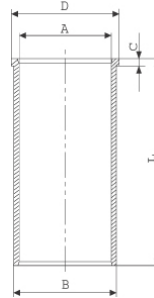


Silindir Gömleği
(Liner)

14-010070-00 D
B : 83.000
L : 152.000

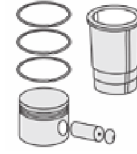


14-020080-00 D
B : 83.000
L : 152.000
D : 84.000
C : 5.000

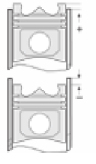


14-020081-00 D
B : 84.000
L : 152.000
D : 85.000
C : 5.000

Dış Çap 1,00mm Farklı
(Outer Diameter
1,00mm Different)



Silindir Kit
(Assembly Set)



Piston - Blok Montaj
Yüksekliği
(Piston - Block
Assembly Height)

+0,33 / +0,53



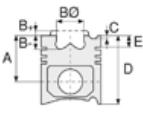


BMC - Ø 82.5

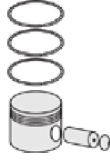
87-71605-STD



Motor Özellikleri
(Engine Specifications)



Piston Ölçüleri
(Piston Dimensions)



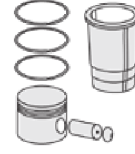
Piston Parça No
(Piston Part No)



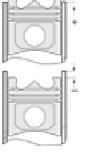
Segman Seti
(Ring Set)



Silindir Gömleği
(Liner)



Silindir Kit
(Assembly Set)



Piston - Blok Montaj
Yüksekliği
(Piston - Block
Assembly Height)

14-020082-00 D
B : 83.500
L : 152.000
D : 84.500
C : 5.000

Dış Çap 0,50mm Farklı
(Outer Diameter
0,50mm Different)

14-020083-00 D
B : 84.500
L : 152.000
D : 84.500
C : 5.000

Dış Çap 1,50mm Farklı
(Outer Diameter
1,50mm Different)





BMC - Ø 85

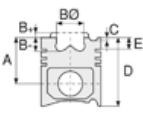
06-703800-00-STD



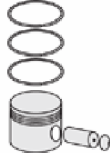
Motor Özellikleri
(Engine Specifications)

İmalatçı (Manufacturer):
BMC
Çap (Diameter): 85
FM Grup No: 1308

1 Sil. Dizel
HAVA KOMPRESORU
(Air Compressor)



Piston Ölçüleri
(Piston Dimensions)



Piston Parça No
(Piston Part No)



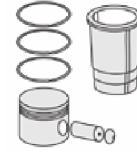
Segman Seti
(Ring Set)

06-703800-00-STD

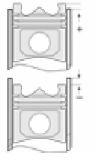
2.000		P	STD
2.000		P	STD
2.000		P	STD
2.000		P	STD
4.762		P	STD



Silindir Gömleği
(Liner)



Silindir Kit
(Assembly Set)



Piston - Blok Montaj
Yüksekliği
(Piston - Block
Assembly Height)



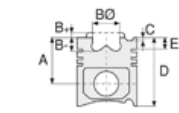


Motor Özellikleri
(Engine Specifications)

İmalatçı (Manufacturer):
NISSAN-BMC
Çap (Diameter): Ø 92,9
FM Grup No: 1310

TD 2,5

4 Sil. Dizel 2494cc 56
Kw (75PS) Nissan ile ortak
motor (With Nissan
Common Engine)



Piston Ölçüleri
(Piston Dimensions)

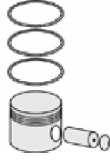
A : 50.300
B - : 1.500
C1 : 0.500
C2 : 0.800
D : 87.000
E : 15.000

Pim : 28 x 80



Piston Özellikleri
(Piston Features)

Segman Taşıyıcı
(Ring Carrier)
Çelik Plaka
(Steel Strut)
Gözarası Düz
(Flat Eye Gap)



Piston Parça No
(Piston Part No)

87-295500-02
87-71647-STD



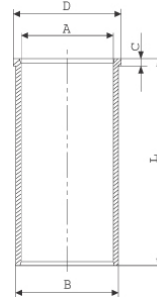
Segman Seti
(Ring Set)

06-295500-00-STD
2.500 CRP KV1
2.000 CRP KV1
4.000 CRP STD

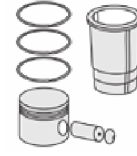
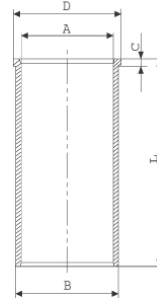


Silindir Gömleği
(Liner)

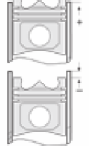
14-020430-00-D
B : 96.000
L : 160.000
D : 102.000
C : 5.000



14-029500-00-DH
B : 95.900
L : 160.000
D : 102.000
C : 5.000



Silindir Kit
(Assembly Set)



Piston - Blok Montaj
Yüksekliği
(Piston - Block
Assembly Height)

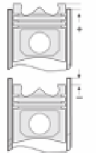
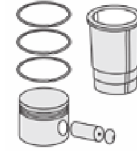
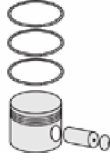
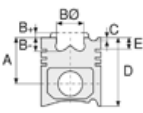
+0,11 / +0,16





BMC - Ø 92,075

87-70411-STD



Motor Özellikleri
(Engine Specifications)

Piston Ölçüleri
(Piston Dimensions)

Piston Parça No
(Piston Part No)

Segman Seti
(Ring Set)

Silindir Gömleği
(Liner)

Silindir Kit
(Assembly Set)




Piston - Blok Montaj
Yüksekliği
(Piston - Block
Assembly Height)

İmalatçı (Manufacturer):
BMC
Çap (Diameter): 92,075
FM Grup No: 1309

A : 33.550
D : 73.300
E : 4.000

Pim: 17,475 x 70

87-823700-02
87-70411-STD
87-823707-02
87-70411-050

06-823700-00-STD
06-823707-00 0,50 mm
3.160  P STD
3.160  P STD
4.747  P STD

1 Sil. Dizel
Hava Kompresörü (Air
Compressor)



Piston Özellikleri
(Piston Features)

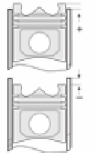
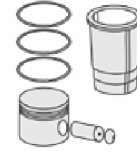
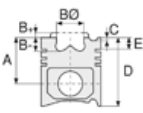
Gözarası Düz
(Flat Eye Gap)





BMC - Ø 94

87-70412-STD



Motor Özellikleri
(Engine Specifications)

İmalatçı (Manufacturer):
BMC
Çap (Diameter): 94
FM Grup No: 1322

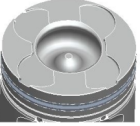
2.8CRI C.RAIL

4 Sil. Dizel 2776cc 82/95,6
KW(110/130 BG)
290M, 310P, 360P, 360V,
360VH, 400P,
MEGA STAR 290V
2004...

Piston Ölçüleri
(Piston Dimensions)

A : 52.100
B- : 18.800
BØ : 44.500
C1 : 2.000
D : 80.000
E : 10.000

Pim: 32 x 74



Piston Özellikleri
(Piston Features)

Segman Taşıyıcı
(Ring Carrier)
Soğutma Kanallı
(Coolin Gallery)
Yağ Püskürtme Oyuğu
(Oil Jet Cut-out)
Gözarası Konik
(Conical Eye Gap)

Piston Parça No
(Piston Part No)

87-846100-02
87-70412-STD

Segman Seti
(Ring Set)

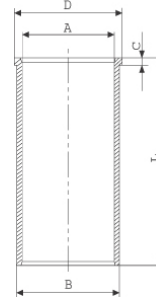
06-846100-00-STD

2.500 CKP KV1
1.500 P KV1
2.000 P GOE

Goetze® LKZ-Ring® /
Yağ segmanı matkap
delikli (Oil Ring Drill
Perforated)

Silindir Gömleği
(Liner)

14-480340-00 WH
B : 101.000
L : 167.800
D : 110.000
C : 6.850
F : 1.000



Silindir Kit
(Assembly Set)

88-846100-02-STD
88-70412-STD

Piston - Blok Montaj
Yüksekliği
(Piston - Block
Assembly Height)

1,32 conta (Notch)
+ 0,46 / + 0,60

1,42 conta (Notch)
1.Kertik + 0,62 / +0,70

1,52 conta (Notch)
2.Kertik +0,71 / + 0,80





BMC- Ø 95

06-293000-10-STD



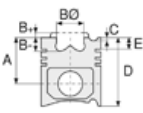
Motor Özellikleri
(Engine Specifications)

İmalatçı (Manufacturer):
BMC
Çap (Diameter): 95
FM Grup No: 1311

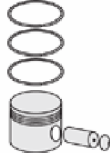
3 Sil. Dizel 2500cc
MORRIS 344 TRAKTOR,
REDLINE TERRIER
NUFFIELD,
UNIVERSAL TRAKTOR

4 Sil. Dizel 3400cc
MORRIS 344 TRAKTOR,
REDLINE TERRIER
NUFFIELD,
UNIVERSAL TRAKTOR

6 Sil. Dizel 6000cc
MORRIS 344 TRAKTOR,
REDLINE TERRIER
NUFFIELD, UNIVERSAL
TRAKTOR



Piston Ölçüleri
(Piston Dimensions)



Piston Parça No
(Piston Part No)



Segman Seti
(Ring Set)

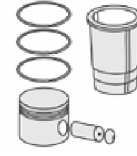
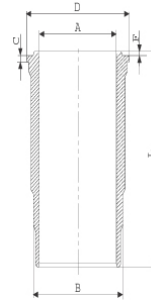
06-293000-10-STD

3.960	CRP	KV1
2.385	P	STD
2.385	P	STD
6.335	CRP	STD
6.335	P	STD

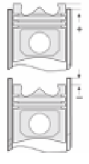


Silindir Gömleği
(Liner)

14-452070-00 WH
B : 110.600
L : 221.600
D : 117.100
C : 8.890
F : 0.900



Silindir Kit
(Assembly Set)



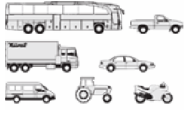
Piston - Blok Montaj
Yüksekliği
(Piston - Block
Assembly Height)





BMC - Ø 98

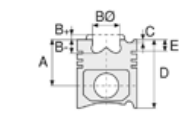
87-71440-STD



Motor Özellikleri
(Engine Specifications)

İmalatçı (Manufacturer):
BMC
Çap (Diameter): 98
FM Grup No: 1312

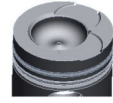
6, 98
6 Sil. Dizel 5655cc
Turboşarj,
direkt püskürtme
(Direct Spray)
1340, 1340G, 140
LEYLAND KAMYON
(Leyland Truck)
1972 - 1978



Piston Ölçüleri
(Piston Dimensions)

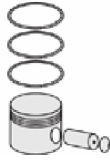
A : 68.150
B- : 24.500
BØ : 56.000
BX : 4.000
C1 : 2.400
D : 116.150
E : 22.000

Pim: 36,5 x 83,54



Piston Özellikleri
(Piston Features)

Segman Taşıyıcı
(Ring Carrier)
Çelik Plaka
(Steel Strut)
Gözarası Düz
(Flat Eye Gap)



Piston Parça No
(Piston Part No)

87-074860-02
87-71440-STD



Segman Seti
(Ring Set)

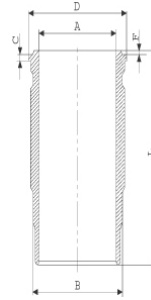
06-074860-10-STD

3.000 CRP KV1
2.392 P KV1
4.763 CRP STD



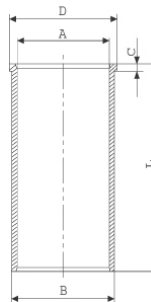
Silindir Gömleği
(Liner)

14-470110-00-WH
B : 108.180
L : 218.400
D : 117.100
C : 8.890
F : 0.830



Dış yüzey fosfat kaplı
(The Outer Surface Is
Phosphate Coated)

14-024230-00 WH
B : 116.000
L : 224.000
D : 125.000
C : 19.000

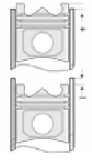


Dış Çap Yarı Mamül
(Outer Surface
Semi-finished)



Silindir Kit
(Assembly Set)

88-074860-02-STD
88-71440-STD



Piston - Blok Montaj
Yüksekliği
(Piston - Block
Assembly Height)

+ 0,30 / + 0,61





BMC - Ø 98

87-71662-STD



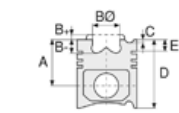
Motor Özellikleri
(Engine Specifications)

İmalatçı (Manufacturer):
BMC
Çap (Diameter): 98
FM Grup No: 1313

4, 98NV
4 Sil. Dizel 3770cc
46/51/55Kw

(62,5/69/75PS) 16,8:1
262, 272, 295, 462, 472,
BOXER 1000-33-43,
BOXER 1200-33-43,
BOXER 1200-38-42,
F350, F360, F420, F550,
TERRIER 650T, TERRIER
850, TERRIER 950
1974...

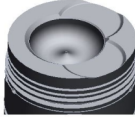
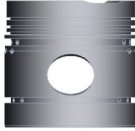
6, 98DV, 98NV
6 Sil. Dizel 5655cc
71,5/84,5Kw (97/115PS)
16,8:1
262, 272, 295, 462, 472,
BOXER 1000-33-43,
BOXER 1200-33-43,
BOXER 1200-38-42,
F350, F360, F420, F550,
TERRIER 650T,
TERRIER 750, TERRIER
850, TERRIER 950
1972...



Piston Ölçüleri
(Piston Dimensions)

A : 68.210
B- : 25.000
BØ : 56.000
BX : 4.000
C1 : 2.400
D : 116.310
E : 15.500

Pim: 34,925 x 82,54



Piston Özellikleri
(Piston Features)

Gözarası Düz
(Flat Eye Gap)



Piston Parça No
(Piston Part No)

87-703400-02
87-71662-STD

87-525300-02
87-71662-STD A



Segman Seti
(Ring Set)

06-703400-10-STD

2.385 CRP KVI
2.385 P STD
2.385 P STD
6.335 CRP STD

06-525300-00 STD

2.385 CR GOE
2.385 P GOE
2.385 P GOE
6.350 P GOE
4.763 P GOE

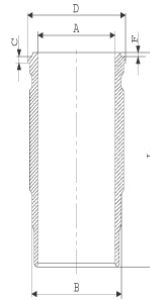


Silindir Gömleği
(Liner)

14-450090-00 WH
B : 108.180
L : 221.560
D : 117.100
C : 8.890
F : 0.830

Dış yüzey fosfat kaplı
(Outer Surface Is
Phosphate Coated)

14-450870-00 DH
B : 108.240
L : 218.380
D : 117.094
C : 8.890
F : 0.830



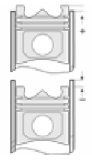
O-RİNG BİLGİ
24-35026-90/0
1X107,32*5,33 NBR
1X107,54*3,53 NBR



Silindir Kit
(Assembly Set)

88-703400-02-STD
88-71662-STD

89-525300-02 STD
89-71662-STD A



Piston - Blok Montaj
Yüksekliği
(Piston - Block
Assembly Height)

0 / + 0,20



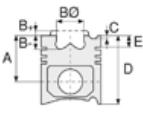


BMC - Ø 98

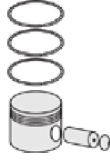
87-71662-STD



Motor Özellikleri
(Engine Specifications)



Piston Ölçüleri
(Piston Dimensions)



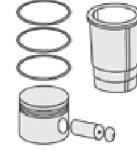
Piston Parça No
(Piston Part No)



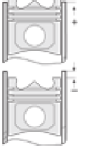
Segman Seti
(Ring Set)



Silindir Gömleği
(Liner)

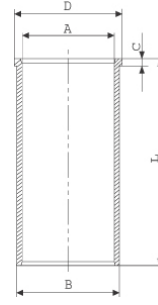


Silindir Kit
(Assembly Set)



Piston - Blok Montaj
Yüksekliği
(Piston - Block
Assembly Height)

14-024230-00 WH
B : 116.000
L : 224.000
D : 125.000
C : 19.000



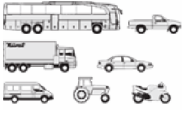
Dış Çap Yarı Mamül
(Outer Diameter
Semi-finished)





CUMMINS - BMC - Ø 107

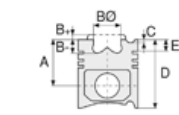
87-73370-STD



Motor Özellikleri
(Engine Specifications)

İmalatçı (Manufacturer):
Cummins-BMC
Çap (Diameter): 107
FM Grup No: 2130

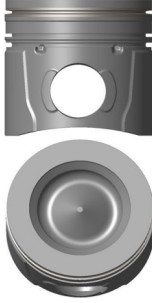
ISB 6.7 Euro 6
6 Sil. Dizel 209 KW
284PS / 280 HP
Procity 12M Otobus



Piston Ölçüleri
(Piston Dimensions)

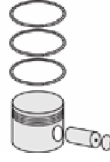
A : 69.300
B- : 18.300
BØ : 73.200
D : 103.100
E : 8.050

Pim: 40 x 90



Piston Özellikleri
(Piston Features)

Segman Taşıyıcı
(Ring Carrier)
Soğutma Kanallı
(Coolin Gallery)
Yağ Püskürtme Oyuğu
(Oil Jet Cut-out)
Gözarası Konik
(Conical Eye Gap)



Piston Parça No
(Piston Part No)

87-821100-22
87-73370-STD



Segman Seti
(Ring Set)

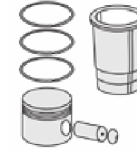
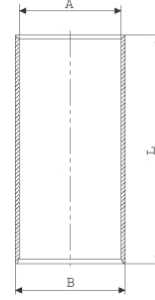
06-821100-00-STD
06-821107-00 0,50 mm

3.000  CKS KV1
2.500  P F14
3.500  CR STD

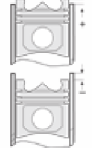


Silindir Gömleği
(Liner)

14-011560-00-D
B : 109.802
L : 200.000



Silindir Kit
(Assembly Set)



Piston - Blok Montaj
Yüksekliği
(Piston - Block
Assembly Height)





CUMMINS - BMC - Ø 107

87-73374-STD



Motor Özellikleri
(Engine Specifications)

İmalatçı (Manufacturer):
Cummins-BMC
Çap (Diameter): 107
FM Grup No: 2129

**ISB 4.5L Euro 5 /
ISB 6.7L Euro 5**

6 Sil. Dizel 6700cc
94-239KW-133-325PS
APRON (NEOPORT),
BMC OTOBUS, LF-CF
SERISI, OTOKAR
OTOBUS
2014....

**ISB 4.5L Euro 5 / ISB
6.7L Euro 5**

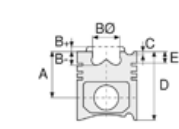
6 Sil. Dizel 6700cc
94-239KW-133-325PS
APRON (NEOPORT),
BMC OTOBUS, LF-CF
SERISI, OTOKAR
OTOBUS
2014....

**ISB 4.5L Euro 5 / ISB
6.7L Euro 5**

6 Sil. Dizel 6700cc
94-239KW-133-325PS
APRON (NEOPORT), BMC
OTOBUS, LF-CF SERISI,
OTOKAR OTOBUS
2014....

**ISB 4.5L Euro 5 / ISB
6.7L Euro 5**

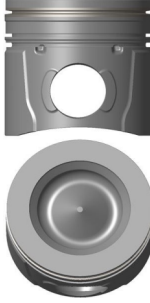
6 Sil. Dizel 6700cc
94-239KW-133-325PS
APRON (NEOPORT), BMC
OTOBUS, LF-CF SERISI,
OTOKAR OTOBUS
2014....



Piston Ölçüleri
(Piston Dimensions)

A : 69.400
B- : 18.300
BØ : 73.100
D : 103.300
E : 8.000

Pim: 40 x 90



Piston Özellikleri
(Piston Features)

Segman Taşıyıcı
(Ring Carrier)
Soğutma Kanallı
(Coolin Gallery)
Yağ Püskürtme Oyuğu
(Oil Jet Cut-out)
Gözarası Konik
(Conical Eye Gap)



Piston Parça No
(Piston Part No)

87-821100-02
87-73374-STD

87-821107-02
87-73374 0,50



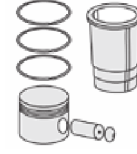
Segman Seti
(Ring Set)

06-821100-00-STD
06-821107-00 0,50 mm

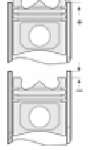
3.000 CKS KV1
2.500 P F14
3.500 CR STD



Silindir Gömleği
(Liner)



Silindir Kit
(Assembly Set)



**Piston - Blok Montaj
Yüksekliği**
(Piston - Block
Assembly Height)

