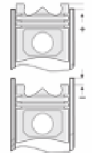
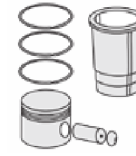
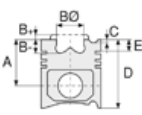




BMW - Ø 77

87-70279-STD



**Motor Özellikleri**  
(Engine Specifications)

İmalatçı (Manufacturer):  
BMW  
Çap (Diameter): Ø 77  
FM Grup No: 1451

**N13 B16A**  
4 Sil. Benzinli 1598cc  
140 KW-190 PS  
114i, 116i, 118i, 316i, 320i  
2010...

**Piston Ölçüleri**  
(Piston Dimensions)

A : 28.500  
B : 2.700  
C1 : 3.500  
D : 48.500  
E : 5.600

Pim: 20 x 48






**Piston Özellikleri**  
(Piston Features)

Segman Taşıyıcı  
(Ring Carrier)  
Sert Anotlama  
(Hard Anodizing)  
Gözarası Konik  
(Conical Eye Gap)

**Piston Parça No**  
(Piston Part No)

87-816500-02  
87-70279-STD  
87-816507-02  
87-70275 0,50

**Segman Seti**  
(Ring Set)

06-816500-50 STD  
06-816507-50 0,50 mm  
1.200  P ST  
1.500  P GOE  
2.000  CR ST

**Silindir Gömleği**  
(Liner)

**Silindir Kit**  
(Assembly Set)

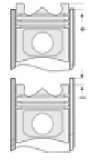
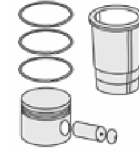
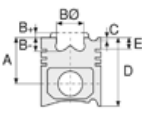
**Piston - Blok Montaj**  
Yüksekliği  
(Piston - Block  
Assembly Height)





BMW - Ø 78

87-70278-STD



**Motor Özellikleri**  
(Engine Specifications)

İmalatçı (Manufacturer):  
BMW  
Çap (Diameter): Ø 78  
FM Grup No: 1459

**N47 D16A-N 47C16A**

4 Sil. Dizel 1568cc  
85 kw-116 BG 16.5  
114d, 116d, Cooper 1.6D,  
Cooper One 1.6D,  
Cooper One 1.6D  
Countryman  
2012....

**N47 D16A-N 47C16A**

4 Sil. Dizel 1568cc  
85 kw-116 BG 16.5  
114d, 116d, Cooper 1.6D,  
Cooper One 1.6D,  
Cooper One 1.6D  
Countryman  
2012....

**Piston Ölçüleri**  
(Piston Dimensions)

A : 40.000  
B- : 12.350  
B : 47.100  
D : 62.500  
E : 8.000

Pim: 26 x 56



**Piston Özellikleri**  
(Piston Features)

Segman Taşıyıcı  
(Ring Carrier)  
Soğutma Kanallı  
(Coolin Gallery)  
Gözarası Konik  
(Conical Eye Gap)

**Piston Parça No**  
(Piston Part No)

87-817200-02  
87-70278-STD  
87-817207-02  
87-70278 0,50

**Segman Seti**  
(Ring Set)

06-817200-00 STD  
06-817207-00 0,50  
1.750 CK KV1  
1.750 P F14  
2.000 CR KV1

**Silindir Gömleği**  
(Liner)

**Silindir Kit**  
(Assembly Set)

**Piston - Blok Montaj**  
Yüksekliği  
(Piston - Block  
Assembly Height)





BMW- Ø 80

06-133100-00-STD



**Motor Özellikleri**  
(Engine Specifications)

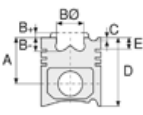
İmalatçı (Manufacturer):  
BMW  
Çap (Diameter): 80  
FM Grup No: 1401

**M21 D25**

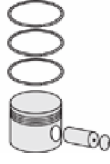
6 Sil. Dizel 2443cc 63Kw  
(86PS) 23:1  
324D, 524D, 524D (E28),  
524TD (E34)  
1983 - 1991

**M21 24WA**

6 Sil. Dizel 2443cc 85Kw  
(115PS) 23:1  
Turbo  
324TDS, 524TD  
1983 - 1991



**Piston Ölçüleri**  
(Piston Dimensions)



**Piston Parça No**  
(Piston Part No)



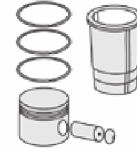
**Segman Seti**  
(Ring Set)

06-133100-00-STD  
06-133107-00 0,50 mm

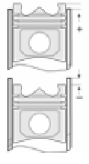
2.500  CRP KV1  
2.000  P IKA  
3.500  CRP STD



**Silindir Gömleği**  
(Liner)



**Silindir Kit**  
(Assembly Set)



**Piston - Blok Montaj**  
**Yüksekliği**  
(Piston - Block  
Assembly Height)





BMW- Ø 80

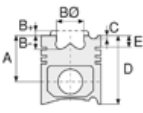
06-704900-00-STD



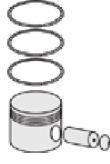
**Motor Özellikleri**  
(Engine Specifications)

İmalatçı (Manufacturer):  
BMW  
Çap (Diameter): 80  
FM Grup No: 1406

**M50**  
6 Sil. Benzinli 1991cc  
320i, 520i  
1990 - 1992



**Piston Ölçüleri**  
(Piston Dimensions)



**Piston Parça No**  
(Piston Part No)



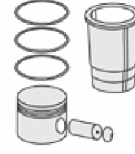
**Segman Seti**  
(Ring Set)

06-704900-00-STD  
06-704905-00 0,25 mm  
06-704907-00 0,50 mm

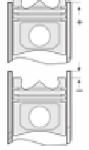
1.500  CRP KVI  
1.750  P STD  
3.500  P STD



**Silindir Gömleği**  
(Liner)



**Silindir Kit**  
(Assembly Set)



**Piston - Blok Montaj**  
**Yüksekliği**  
(Piston - Block  
Assembly Height)





BMW- Ø 80

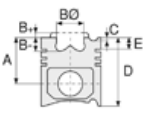
06-705000-00-STD



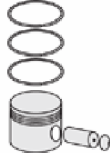
**Motor Özellikleri**  
(Engine Specifications)

İmalatçı (Manufacturer):  
BMW  
Çap (Diameter): 80  
FM Grup No: 1406

**M50 B20 TU1**  
6 Sil. Benzinli 1991cc  
110 KW (150 PS) 11:1  
320i, 520i  
1992 - 1995



**Piston Ölçüleri**  
(Piston Dimensions)



**Piston Parça No**  
(Piston Part No)



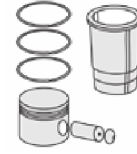
**Segman Seti**  
(Ring Set)

06-705000-00-STD  
06-705005-00 0,25 mm  
06-705007-00 0,50 mm

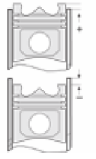
1.500  CRP KV1  
1.500  P STD  
2.000  P KV1



**Silindir Gömleği**  
(Liner)



**Silindir Kit**  
(Assembly Set)



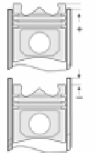
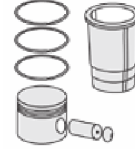
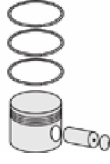
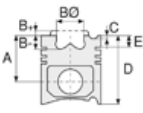
**Piston - Blok Montaj**  
**Yüksekliği**  
(Piston - Block  
Assembly Height)





BMW-Ø 80

87-70208-STD



**Motor Özellikleri**  
(Engine Specifications)

**Piston Ölçüleri**  
(Piston Dimensions)

**Piston Parça No**  
(Piston Part No)

**Segman Seti**  
(Ring Set)

**Silindir Gömleği**  
(Liner)

**Silindir Kit**  
(Assembly Set)

**Piston - Blok Montaj**  
**Yüksekliği**  
(Piston - Block  
Assembly Height)

İmalatçı (Manufacturer):  
BMW  
Çap (Diameter): 80  
FM Grup No: 1441

A : 29.600  
C1 : 2.900  
C2 : 3.400  
D : 49.500  
E : 6.200

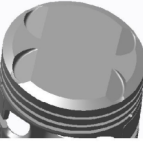
87-816100-02  
87-70208-STD  
  
87-816107-02  
87-70208 050

06-816100-00-STD  
06-816107-00 0,50 mm  
  
1.200 CKP ST  
1.500 P GOE  
2.000 P GOE

Goetze® LKZ-Ring® /  
Yağ segmanı matkap  
delikli (Oil Ring Drill  
Perforated)

**M54 B22**  
6 Sil. Benzinli 2171cc 141  
KW / 170 PS 10,8:1  
320i 2.2 24V (E46),  
520i 2.2 24V (E39),  
520i 2.2 24V(E60),  
Z3 2.2i 24V(E36),  
Z4 2.2i 24V (E85)  
2000 - 2006

Pim: 22 x 51



**Piston Özellikleri**  
(Piston Features)

Gözarası Düz  
(Flat Eye Gap)





BMW- Ø 80

87-70209-STD



**Motor Özellikleri**  
(Engine Specifications)

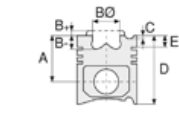
İmalatçı (Manufacturer):  
BMW  
Çap (Diameter): 80  
FM Grup No: 1438

**M41**

4 Sil. Dizel 1669cc 66  
KW(90 PS) 22:1  
Turbo Intercooler  
318  
COMPACT/TDS/TUURING  
SE  
1995...

**M51 D25WA**

6 Sil. Dizel 2498cc 105  
KW(143 PS) 22:1  
Turbo Intercooler /  
OPEL VE LAND ROVER  
İLE ORTAK MOTOR  
(Common Engine With  
Opel And Land Rover)  
325 TDS, 525  
TDS/TOURING, 725 TDS  
1990...



**Piston Ölçüleri**  
(Piston Dimensions)

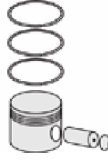
A : 39.450  
B- : 2.500  
D : 62.450  
E : 9.900

Pim: 27 x 63



**Piston Özellikleri**  
(Piston Features)

Segman Taşıyıcı  
(Ring Carrier)  
Çelik Plaka  
(Steel Strut)  
Soğutma Kanallı  
(Coolin Gallery)  
Yağ Püskürtme Oyuğu  
(Oil Jet Cut-out)  
Gözarası Düz  
(Flat Eye Gap)



**Piston Parça No**  
(Piston Part No)

87-704500-02  
87-70209-STD  
87-704507-02  
87-70209 0,50

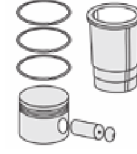


**Segman Seti**  
(Ring Set)

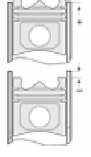
06-704500-00-STD  
06-704507-00 0,50 mm  
3.000 CRP KV1  
1.750 P IKA  
3.000 CRP STD



**Silindir Gömleği**  
(Liner)



**Silindir Kit**  
(Assembly Set)



**Piston - Blok Montaj**  
**Yüksekliği**  
(Piston - Block  
Assembly Height)

1 Kertik conta (Notch Seal)  
ile (1.55 mm) +0,64 /+0.78

2 Kertik conta (Notch Seal)  
ile (1.68 mm) +0.79 / +0.91

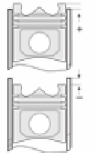
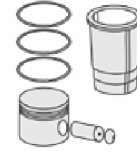
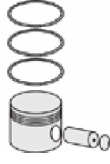
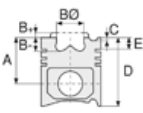
3 Kertik conta (Notch Seal)  
ile (1.87 mm) +0.92/+1.08





BMW- Ø 80

87-70210-STD



**Motor Özellikleri**  
(Engine Specifications)

İmalatçı (Manufacturer):  
BMW  
Çap (Diameter): 80  
FM Grup No: 1402

**M50/B20**  
6 Sil. Benzinli 1991cc  
110Kw (150PS) 11:1  
24v injection / VANOSLU  
320i Coupe, 320i, 520i,  
520i Touring  
1992 - 1995

**Piston Ölçüleri**  
(Piston Dimensions)

A : 33.500  
B : 1.860  
C1 : 2.940  
C2 : 2.940  
D : 51.000  
E : 8.860

Pim: 22 x 51



**Piston Özellikleri**  
(Piston Features)

Çelik Plaka  
(Steel Strut)  
Gözarası Düz  
(Flat Eye Gap)

**Piston Parça No**  
(Piston Part No)

87-705000-02  
87-70210-STD  
87-705005-02  
87-70210 025  
87-705007-02  
87-70210 050

**Segman Seti**  
(Ring Set)

06-705000-00-STD  
06-705005-00 0,25 mm  
06-705007-00 0,50 mm

1.500  CRP KV1  
1.500  P STD  
2.000  P KV1

**Silindir Gömleği**  
(Liner)

**Silindir Kit**  
(Assembly Set)

**Piston - Blok Montaj**  
**Yüksekliği**  
(Piston - Block  
Assembly Height)

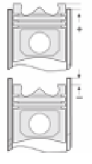
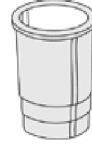






BMW-Ø 80

87-70211-STD



**Motor Özellikleri**  
(Engine Specifications)

**Piston Ölçüleri**  
(Piston Dimensions)

**Piston Parça No**  
(Piston Part No)

**Segman Seti**  
(Ring Set)

**Silindir Gömleği**  
(Liner)

**Silindir Kit**  
(Assembly Set)

**Piston - Blok Montaj**  
**Yüksekliği**  
(Piston - Block  
Assembly Height)

İmalatçı (Manufacturer):  
BMW  
Çap (Diameter): 80  
FM Grup No: 1403

A : 42.400  
C1 : 1.310  
C2 : 3.130  
D : 62.400  
E : 8.700

87-704900-02  
87-70211-STD  
87-704905-02  
87-70211 025

06-704900-00-STD  
06-704905-00 0,25 mm  
06-704907-00 0,50 mm

1.500 CRP KV1  
1.750 P STD  
3.000 P STD

**M50/B20M**

6 Sil. Benzinli 110Kw  
(150PS) 10,5:1  
24v enjektörlü, katalizörlü  
(With Injector, With  
Catalyst)  
320i, 520i  
1990...

Pim: 22 x 54



**Piston Özellikleri**  
(Piston Features)

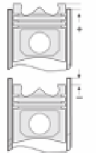
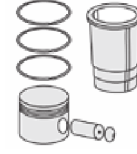
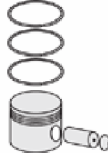
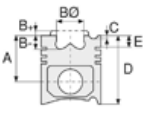
Çelik Plaka  
(Steel Strut)  
Gözarası Düz  
(Flat Eye Gap)





BMW - Ø 80

87-70212-STD



**Motor Özellikleri**  
(Engine Specifications)

İmalatçı (Manufacturer):  
BMW  
Çap (Diameter): 80  
FM Grup No: 1404

**M20B20K**  
6 Sil. Benzinli 1990cc  
92Kw (125PS) 9,8:1  
Enjektörlü  
320i, 520i  
1981 - 1988

**Piston Ölçüleri**  
(Piston Dimensions)

A : 43.400  
B : 3.300  
C1 : 1.300  
D : 71.700  
E : 7.700

Pim: 22 x 61



**Piston Özellikleri**  
(Piston Features)

Çelik Plaka  
(Steel Strut)  
Gözarası Düz  
(Flat Eye Gap)

**Piston Parça No**  
(Piston Part No)

87-701700-02  
87-70212-STD  
87-701705-02  
87-70212 025  
87-701707-02  
87-70212 050

87-131300-02  
87-70212-STD A

87-131305-02  
87-70212 025 A

87-131307-02  
87-70212 050 A

**Segman Seti**  
(Ring Set)

06-701700-00-STD  
06-701705-00 0,25 mm  
06-701707-00 0.50 mm

1.500 CRP KV1  
2.000 P STD  
3.500 CRP STD

06-131300-50-STD  
06-131305-50 0,25 mm  
06-131307-50 0,50 mm

1.500 CRP KV1  
2.000 P STD  
3.500 CR ST

**Silindir Gömleği**  
(Liner)

**Silindir Kit**  
(Assembly Set)

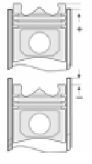
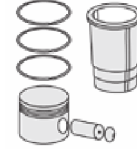
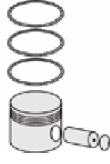
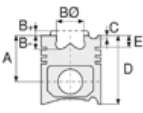
**Piston - Blok Montaj**  
**Yüksekliği**  
(Piston - Block  
Assembly Height)





BMW- Ø 80

87-70213-STD



**Motor Özellikleri**  
(Engine Specifications)

**Piston Ölçüleri**  
(Piston Dimensions)

**Piston Parça No**  
(Piston Part No)

**Segman Seti**  
(Ring Set)

**Silindir Gömleği**  
(Liner)

**Silindir Kit**  
(Assembly Set)

**Piston - Blok Montaj**  
**Yüksekliği**  
(Piston - Block  
Assembly Height)

İmalatçı (Manufacturer):  
BMW  
Çap (Diameter): 80  
FM Grup No: 1405

A : 32.200  
B : 1.400  
C1 : 1.500  
C2 : 2.800  
D : 54.600  
E : 8.000

87-705000-22  
87-70213-STD  
87-705005-22  
87-70213-025

06-705000-00-STD  
06-705005-00 0,25 mm  
06-705007-00 0,50 mm

**M52/B20**  
6 Sil. Benzinli 1991cc  
110Kw (150PS) 9,8:1  
Enjektörlü (With Injector)  
320i (E36), 520i, Z3  
1993...

Pim: 22 x 51

87-705007-22  
87-70213-050

1.500 CRP KV1  
1.500 P STD  
2.000 P KV1



**Piston Özellikleri**  
(Piston Features)

Gözarası Düz  
(Flat Eye Gap)





BMW- Ø 84

06-128200-50-STD

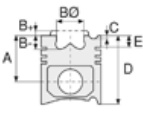


**Motor Özellikleri**  
(Engine Specifications)

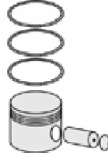
İmalatçı (Manufacturer):  
BMW  
Çap (Diameter): 84  
FM Grup No: 1412

**114/116**  
4 Sil. Benzinli 1573cc  
8,6:1  
OHC  
1502, 1600, 1602  
Cabriolet, 315, 316  
Cabriolet  
1963 - 1975

**M10B 16V**  
4 Sil. Benzinli 1573cc  
55Kw (75PS) 9,5:1  
OHC  
315, 316, 318  
1981 - 1983



**Piston Ölçüleri**  
(Piston Dimensions)



**Piston Parça No**  
(Piston Part No)



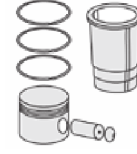
**Segman Seti**  
(Ring Set)

06-128200-50-STD  
06-128205-50 0,25 mm  
06-128207-50 0,50 mm

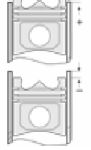
1.750  CRP KV1  
2.000  P STD  
4.000  CRP ST



**Silindir Gömleği**  
(Liner)



**Silindir Kit**  
(Assembly Set)



**Piston - Blok Montaj**  
**Yüksekliği**  
(Piston - Block  
Assembly Height)





BMW- Ø 84

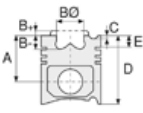
06-133200-20-STD



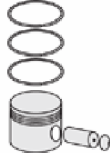
**Motor Özellikleri**  
(Engine Specifications)

İmalatçı (Manufacturer):  
BMW  
Çap (Diameter): 84  
FM Grup No: 1411

**M20B 27ME**  
6 Sil. Benzinli 2693cc  
92-95Kw(125-129PS) 11,1:1  
325e, 525e, 528e  
1985...



**Piston Ölçüleri**  
(Piston Dimensions)



**Piston Parça No**  
(Piston Part No)



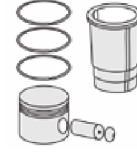
**Segman Seti**  
(Ring Set)

06-133200-20-STD

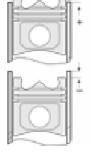
1.500 CRP KV1  
2.000 P STD  
4.000 CRP STD



**Silindir Gömleği**  
(Liner)



**Silindir Kit**  
(Assembly Set)



**Piston - Blok Montaj**  
**Yüksekliği**  
(Piston - Block  
Assembly Height)





BMW- Ø 84

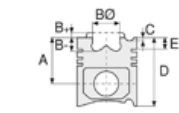
87-70205-STD



**Motor Özellikleri**  
(Engine Specifications)

İmalatçı (Manufacturer):  
BMW  
Çap (Diameter): 84  
FM Grup No: 1446

**M54**  
6 Sil. Benzinli 2500cc  
125-170 KW(170-231PS)  
10.5:1  
325i, 525i, X3, X5, Z3, Z4  
2000 - 2007



**Piston Ölçüleri**  
(Piston Dimensions)

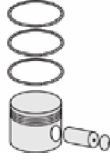
A : 27.600  
C1 : 2.600  
D : 47.600  
E : 5.000

Pim: 22 x 56



**Piston Özellikleri**  
(Piston Features)

Gözarası Düz  
(Flat Eye Gap)



**Piston Parça No**  
(Piston Part No)

87-425300-02  
87-70205-STD  
  
87-425307-02  
87-70205 0,50



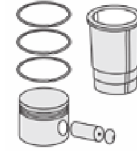
**Segman Seti**  
(Ring Set)

06-425300-00-STD  
06-425307-00 0.50 mm  
  
1.200 NT ST  
1.500 P GOE  
2.000 P KV4

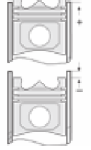
Goetze® LKZ-Ring® /  
Yağ segmanı matkap  
delikli(Oil Ring Drill  
Perforated)



**Silindir Gömleği**  
(Liner)



**Silindir Kit**  
(Assembly Set)



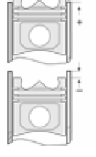
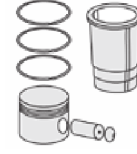
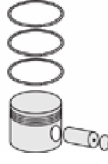
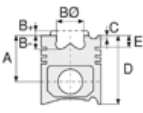
**Piston - Blok Montaj**  
**Yüksekliği**  
(Piston - Block  
Assembly Height)





BMW- Ø 84

87-70207-STD



**Motor Özellikleri**  
(Engine Specifications)

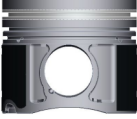
İmalatçı (Manufacturer):  
BMW  
Çap (Diameter): 84  
FM Grup No: 1450

**M57N2 EURO 4**  
6 Sil. Dizel 2993cc  
150-180kw/204-245Hp  
325d, 330d, 525d, 530d,  
730d, X3 3.0d, X5 3.0d,  
X6 3.0d  
2006...

**Piston Ölçüleri**  
(Piston Dimensions)

A : 44.980  
B- : 14.500  
B : 47.500  
C1 : 1.600  
C2 : 1.540  
D : 71.000  
E : 9.200

Pim: 30 x 68



**Piston Özellikleri**  
(Piston Features)

Segman Taşıyıcı  
(Ring Carrier)  
Soğutma Kanallı  
(Coolin Gallery)  
Yağ Püskürtme Oyuğu  
(Oil Jet Cut-out)  
Gözarası Konik  
(Conical Eye Gap)

**Piston Parça No**  
(Piston Part No)

87-421800-02  
87-70207-STD  
87-421807-02  
87-70207 0,50

**Segman Seti**  
(Ring Set)

06-421800-00-STD  
06-421807-00 0,50 mm  
3.000 CKS KV1  
1.750 P F14  
3.000 CR KV1  
Yağ segmanı matkap delik  
(Oil Ring Drill Perforated)

**Silindir Gömleği**  
(Liner)

**Silindir Kit**  
(Assembly Set)

**Piston - Blok Montaj**  
**Yüksekliği**  
(Piston - Block  
Assembly Height)

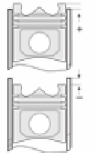
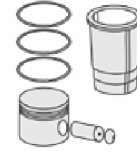
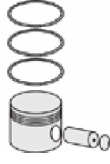
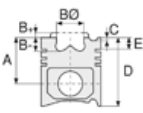
1,40 mm Conta (Notch) ile  
0,85/0,92  
1,50 mm Conta (Notch) ile  
0,92/1,03  
1,60 mm Conta (Notch) ile  
1,04/1,18  
1,80 mm Conta (Notch) ile  
1,19/1,30





BMW- Ø 84

87-70214-STD



**Motor Özellikleri**  
(Engine Specifications)

**Piston Ölçüleri**  
(Piston Dimensions)

**Piston Parça No**  
(Piston Part No)

**Segman Seti**  
(Ring Set)

**Silindir Gömleği**  
(Liner)

**Silindir Kit**  
(Assembly Set)

**Piston - Blok Montaj**  
**Yüksekliği**  
(Piston - Block  
Assembly Height)

İmalatçı (Manufacturer):  
BMW  
Çap (Diameter): 84  
FM Grup No: 1421

A : 31.820  
C1 : 1.550  
C2 : 1.700  
D : 51.820  
E : 8.100

87-815500-02  
87-70214-STD  
87-815507-02  
87-70214-050

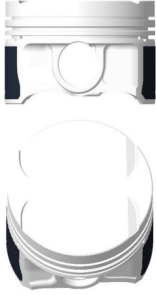
06-815500-50-STD  
06-815507-50 0,50 mm  
1.500 CKP KV1  
1.500 STD  
2.000 CR ST

14-020710-00 D  
B : 87.000  
L : 137.000  
D : 88.500  
C : 6.000

**M52B 28GG**

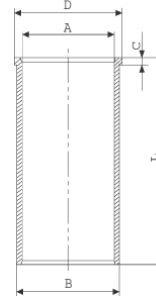
6 Sil. Benzinli 2791cc  
141Kw (191PS) 10,2:1  
24v enjektörlü, katalizörlü  
(With Injector, With  
Catalyst)  
328i, 528i, 728i  
1995 - 1998

Pim: 22 x 56



**Piston Özellikleri**  
(Piston Features)

Gözarası Düz  
(Flat Eye Gap)

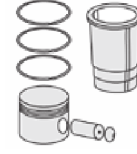
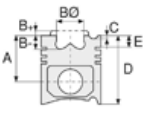






BMW- Ø 84

87-70215-STD



**Motor Özellikleri**  
(Engine Specifications)

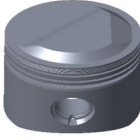
İmalatçı (Manufacturer):  
BMW  
Çap (Diameter): 84  
FM Grup No: 1410

**M10B 16E21**  
4 Sil. Benzinli 1573cc  
66Kw (90PS) 8,3:1  
316  
1975 - 1980

**Piston Ölçüleri**  
(Piston Dimensions)

A : 46.700  
B : 6.000  
D : 84.700  
E : 8.200

Pim: 22 x 69



**Piston Özellikleri**  
(Piston Features)

Çelik Plaka  
(Steel Strut)  
Gözarası Düz  
(Flat Eye Gap)

**Piston Parça No**  
(Piston Part No)

87-701800-02  
87-70215-STD  
  
87-701805-02  
87-70215 025  
  
87-701807-02  
87-70215 050

**Segman Seti**  
(Ring Set)

06-701800-00-STD  
06-701805-00 0,25 mm  
06-701807-00 0,50 mm  
  
1.750 CRP KV1  
2.000 P STD  
4.000 CRP STD

**Silindir Gömleği**  
(Liner)

**Silindir Kit**  
(Assembly Set)

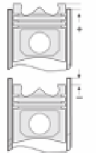
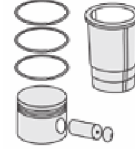
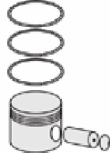
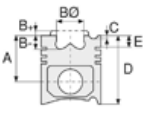
**Piston - Blok Montaj**  
**Yüksekliği**  
(Piston - Block  
Assembly Height)





BMW- Ø 84

87-70216-STD



**Motor Özellikleri**  
(Engine Specifications)

İmalatçı (Manufacturer):  
BMW  
Çap (Diameter): 84  
FM Grup No: 1413

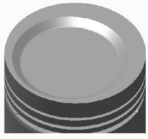
**M40B 16ME**

4 Sil. Benzinli 1596cc  
73Kw (100PS) 9:1  
Enjektörlü (With Injector)  
316i  
1988 - 1992

**Piston Ölçüleri**  
(Piston Dimensions)

A : 41.150  
B- : 2.750  
BØ : 69.000  
BX : 3.200  
BY : 4.000  
D : 67.150  
E : 7.600

Pim: 22 x 54,3



**Piston Özellikleri**  
(Piston Features)

Çelik Plaka  
(Steel Strut)  
Gözarası Düz  
(Flat Eye Gap)

**Piston Parça No**  
(Piston Part No)

87-702600-22  
87-70216-STD  
87-702605-22  
87-70216-025  
87-702607-22  
87-70216-050

87-702600-32  
87-70216-STD A

87-702605-32  
87-70216-025 A

87-702607-32  
87-70216-050 A

**Segman Seti**  
(Ring Set)

06-702600-50-STD  
06-702605-50 0,25 mm  
06-702607-50 0,50 mm

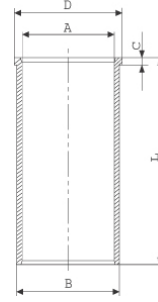
1.500 CRP KV1  
1.750 P STD  
3.000 CRP ST

06-702600-20-STD  
06-702605-20 0,25 mm  
06-702607-20 0,50 mm

1.500 CRP KV1  
1.750 P STD  
3.000 CRP STD

**Silindir Gömleği**  
(Liner)

14-020710-00 D  
B : 87.000  
L : 137.000  
D : 88.500  
C : 6.000



**Silindir Kit**  
(Assembly Set)

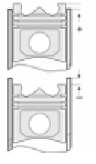
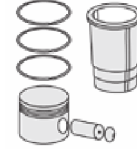
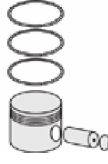
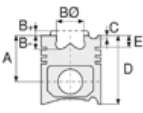
**Piston - Blok Montaj**  
**Yüksekliği**  
(Piston - Block  
Assembly Height)





BMW- Ø 84

87-70217-STD



**Motor Özellikleri**  
(Engine Specifications)

İmalatçı (Manufacturer):  
BMW  
Çap (Diameter): 84  
FM Grup No: 1414

**M10B 16V**  
4 Sil. Benzinli 1574cc  
55Kw (75PS) 9,5:1  
316  
1981 - 1983

**Piston Ölçüleri**  
(Piston Dimensions)

A : 47.100  
B : 7.200  
D : 86.300  
E : 8.000

Pim: 22 x 69



**Piston Özellikleri**  
(Piston Features)

Çelik Plaka  
(Steel Strut)  
Gözarası Düz  
(Flat Eye Gap)

**Piston Parça No**  
(Piston Part No)

87-701800-22  
87-70217-STD  
87-701805-22  
87-70217 025  
87-701807-22  
87-70217 050

**Segman Seti**  
(Ring Set)

06-701800-00-STD  
06-701805-00 0,25 mm  
06-701807-00 0,50 mm  
1.750 CRP KV1  
2.000 P STD  
4.000 CRP STD

**Silindir Gömleği**  
(Liner)

**Silindir Kit**  
(Assembly Set)

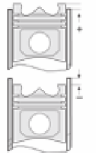
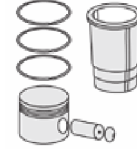
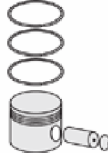
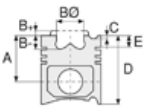
**Piston - Blok Montaj**  
**Yüksekliği**  
(Piston - Block  
Assembly Height)





BMW- Ø 84

87-70218-STD



**Motor Özellikleri**  
(Engine Specifications)

İmalatçı (Manufacturer):  
BMW  
Çap (Diameter): 84  
FM Grup No: 1408

**M40B 18E**  
4 Sil. Benzinli 1795cc  
83Kw (113PS) 8,8:1  
Enjektörlü, katalizörlü  
(With Injector, With  
Catalyst)  
318i, 518i  
1991 - 1993

**Piston Ölçüleri**  
(Piston Dimensions)

A : 31.650  
B- : 5.330  
BØ : 73.000  
BX : 4.000  
D : 57.650  
E : 8.000

Pim: 22 x 52



**Piston Özellikleri**  
(Piston Features)

Çelik Plaka  
(Steel Strut)  
Gözarası Düz  
(Flat Eye Gap)

**Piston Parça No**  
(Piston Part No)

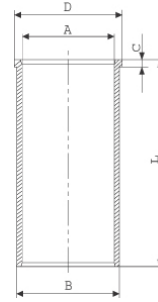
87-704200-02  
87-70218-STD  
87-704207-02  
87-70218 050

**Segman Seti**  
(Ring Set)

06-704200-50-STD  
06-704207-50 0,50 mm  
1.500 CRP KV1  
1.500 P STD  
2.000 CR ST

**Silindir Gömleği**  
(Liner)

14-020710-00 D  
B : 87.000  
L : 137.000  
D : 88.500  
C : 6.000



**Silindir Kit**  
(Assembly Set)

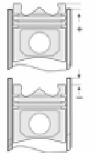
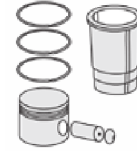
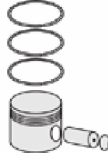
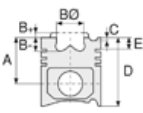
**Piston - Blok Montaj**  
**Yüksekliği**  
(Piston - Block  
Assembly Height)





BMW- Ø 84

87-70219-STD



**Motor Özellikleri**  
(Engine Specifications)

İmalatçı (Manufacturer):  
BMW  
Çap (Diameter): 84  
FM Grup No: 1409

**M43B 18E36**  
4 Sil. Benzinli 1796cc  
85Kw (115PS) 9,7:1  
Enjektörlü, katalizörlü  
(With Injector, With  
Catalyst)  
318g, 518g, 318i, 518i, Z3  
1993...

**Piston Ölçüleri**  
(Piston Dimensions)

A : 31.650  
B- : 3.030  
BØ : 70.300  
BX : 2.700  
BY : 3.900  
D : 57.650  
E : 7.600

Pim: 22 x 54



**Piston Özellikleri**  
(Piston Features)

Gözarası Düz  
(Flat Eye Gap)

**Piston Parça No**  
(Piston Part No)

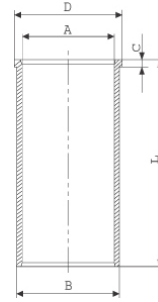
87-704200-22  
87-70219-STD  
87-704207-22  
87-70219 050

**Segman Seti**  
(Ring Set)

06-704200-50-STD  
06-704207-50 0,50 mm  
1.500 CRP KV1  
1.500 P STD  
2.000 CR ST

**Silindir Gömleği**  
(Liner)

14-020710-00 D  
B : 87.000  
L : 137.000  
D : 88.500  
C : 6.000



**Silindir Kit**  
(Assembly Set)

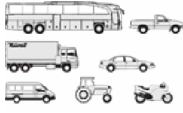
**Piston - Blok Montaj**  
**Yüksekliği**  
(Piston - Block  
Assembly Height)





BMW- Ø 84

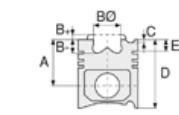
87-70220-STD



**Motor Özellikleri**  
(Engine Specifications)

İmalatçı (Manufacturer):  
BMW  
Çap (Diameter): 84  
FM Grup No: 1415

**M40B 18ME**  
4 Sil. Benzinli 1795cc  
85Kw (115PS) 9,7:1  
Enjektörlü, katalizörlü  
(With Injector, With  
Catalyst)  
318i  
1987 - 1990



**Piston Ölçüleri**  
(Piston Dimensions)

A : 31.150  
B- : 1.190  
BØ : 70.000  
BX : 3.150  
BY : 3.250  
D : 56.150  
E : 7.000

Pim: 22 x 54



**Piston Özellikleri**  
(Piston Features)

Çelik Plaka  
(Steel Strut)  
Gözarası Düz  
(Flat Eye Gap)



**Piston Parça No**  
(Piston Part No)

87-704200-42  
87-70220-STD  
87-704207-42  
87-70220 050



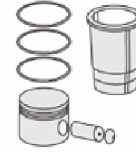
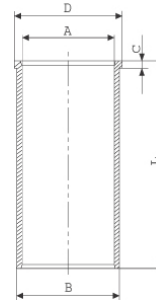
**Segman Seti**  
(Ring Set)

06-704200-50-STD  
06-704207-50 0,50 mm  
1.500 CRP KV1  
1.500 P STD  
2.000 CR ST

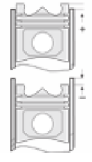


**Silindir Gömleği**  
(Liner)

14-020710-00 D  
B : 87.000  
L : 137.000  
D : 88.500  
C : 6.000



**Silindir Kit**  
(Assembly Set)



**Piston - Blok Montaj**  
**Yüksekliği**  
(Piston - Block  
Assembly Height)





BMW- Ø 84

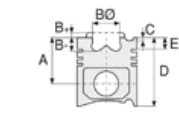
87-70221-STD



**Motor Özellikleri**  
(Engine Specifications)

İmalatçı (Manufacturer):  
BMW  
Çap (Diameter): 84  
FM Grup No: 1416

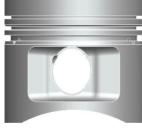
**M40B 18E**  
4 Sil. Benzinli 1795cc  
83Kw (113PS) 8,8:1  
Enjektörlü, katalizörlü  
(With Injector, With  
Catalyst)  
318i  
1987 - 1990



**Piston Ölçüleri**  
(Piston Dimensions)

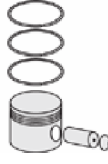
A : 36.650  
B- : 6.050  
BØ : 70.000  
BX : 3.000  
BY : 4.000  
D : 62.650  
E : 9.000

Pim: 22 x 52



**Piston Özellikleri**  
(Piston Features)

Çelik Plaka  
(Steel Strut)  
Gözarası Düz  
(Flat Eye Gap)



**Piston Parça No**  
(Piston Part No)

87-702600-02  
87-70221-STD  
87-702607-02  
87-70221 050



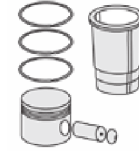
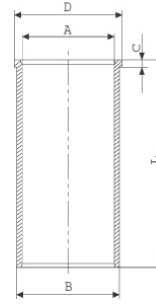
**Segman Seti**  
(Ring Set)

06-702600-20-STD  
06-702605-20 0,25 mm  
06-702607-20 0,50 mm  
1.500 CRP KV1  
1.750 P STD  
3.000 CRP STD

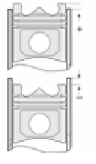


**Silindir Gömleği**  
(Liner)

14-020710-00 D  
B : 87.000  
L : 137.000  
D : 88.500  
C : 6.000



**Silindir Kit**  
(Assembly Set)



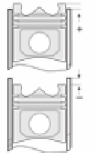
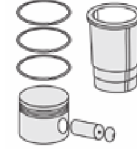
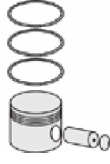
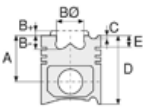
**Piston - Blok Montaj**  
**Yüksekliği**  
(Piston - Block  
Assembly Height)





BMW- Ø 84

87-70223-STD



**Motor Özellikleri**  
(Engine Specifications)

İmalatçı (Manufacturer):  
BMW  
Çap (Diameter): 84  
FM Grup No: 1432

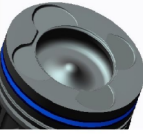
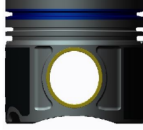
**M47N**  
4 Sil. Dizel 2000cc  
320 D, 320 TD, E-46 320  
CD  
2001...

**M57N**  
6 Sil. Dizel 3000cc  
330D, 330CD, 330XD,  
E-53 X5 3,0D, E-60 530D,  
E-61 530D, E-65 730D

**Piston Ölçüleri**  
(Piston Dimensions)

A : 44.870  
B- : 13.500  
BØ : 46.900  
C1 : 1.360  
C2 : 1.480  
D : 70.620  
E : 7.620

Pim: 30 x 68



**Piston Özellikleri**  
(Piston Features)

Segman Taşıyıcı  
(Ring Carrier)  
Soğutma Kanallı  
(Coolin Gallery)  
Yağ Püskürtme Oyuğu  
(Oil Jet Cut-out)  
Burçlu Piston  
(Bushing Piston)  
Gözarası Düz  
(Flat Eye Gap)

**Piston Parça No**  
(Piston Part No)

87-815600-02  
87-70223-STD  
87-815607-02  
87-70223-050

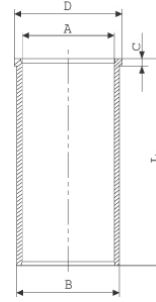
**Segman Seti**  
(Ring Set)

06-815600-00-STD  
06-815607-00 0,50  
3.000 CKP KV1  
2.000 P F14  
3.000 NT ST

Yağ segmanı matkap  
delikli (Oil Ring Drill  
Perforated)

**Silindir Gömleği**  
(Liner)

14-021780-00 D  
B : 87.000  
L : 149.000  
D : 88.500  
C : 6.000



**Silindir Kit**  
(Assembly Set)

**Piston - Blok Montaj**  
**Yüksekliği**  
(Piston - Block  
Assembly Height)

1.Kertik conta(Notch Seal)  
ile +0,85 / + 0,90

2.Kertik conta(Notch Seal)  
ile +0,90 / + 1,00

3.Kertik conta(Notch Seal)  
ile +1,00 / + 1,10







BMW- Ø 84

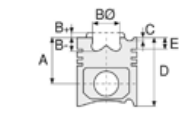
87-70224-STD



**Motor Özellikleri**  
(Engine Specifications)

İmalatçı (Manufacturer):  
BMW  
Çap (Diameter): 84  
FM Grup No: 1434

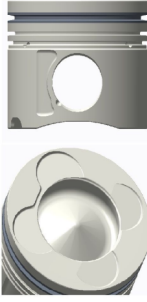
**M47N**  
4 Sil. Dizel 2000cc  
E-87 118D, E-90 318 D,  
E-91 318D  
2001...



**Piston Ölçüleri**  
(Piston Dimensions)

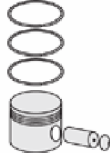
A : 44.870  
B- : 14.500  
BØ : 47.500  
C1 : 1.360  
C2 : 1.480  
D : 70.370  
E : 7.870

Pim: 30 x 68



**Piston Özellikleri**  
(Piston Features)

Segman Taşıyıcı  
(Ring Carrier)  
Soğutma Kanallı  
(Coolin Gallery)  
Yağ Püskürtme Oyuğu  
(Oil Jet Cut-out)  
Gözarası Konik  
(Conical Eye Gap)



**Piston Parça No**  
(Piston Part No)

87-815700-02  
87-70224-STD  
87-815707-02  
87-70224-050



**Segman Seti**  
(Ring Set)

06-815700-00-STD  
06-815707-00 0,50

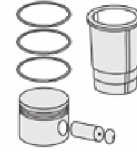
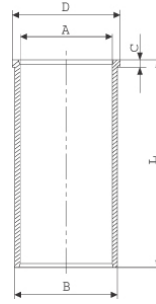
3.000 CKP KV1  
2.000 P F14  
2.000 CRP KV1

Goetze® LKZ-Ring® / Yağ  
segmanı matkap delikli  
(Oil Ring Drill Perforated)

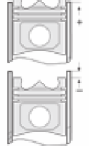


**Silindir Gömleği**  
(Liner)

14-021780-00 D  
B : 87.000  
L : 149.000  
D : 88.500  
C : 6.000



**Silindir Kit**  
(Assembly Set)



**Piston - Blok Montaj**  
**Yüksekliği**  
(Piston - Block  
Assembly Height)

1.45mm conta(Notch)  
+0,45/+0,56

1,55mm conta(Notch)  
+0,56/+0,65

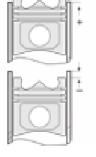
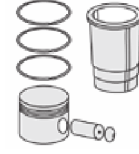
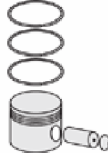
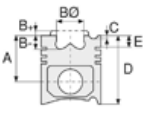
1,65mm conta(Notch)  
+0,65/+0,75





BMW- Ø 84

87-70227-STD



**Motor Özellikleri**  
(Engine Specifications)

İmalatçı (Manufacturer):  
BMW  
Çap (Diameter): 84  
FM Grup No: 1458

**B47 D20**  
4 Sil. Dizel 1995cc  
85-155kW / 116-211 PS 16,5  
118 d, 120 d, 320 d xDrive,  
520 d xDrive  
2015

**Piston Ölçüleri**  
(Piston Dimensions)

A : 47.000  
B- : 14.500  
BØ : 47.500  
D : 73.000  
E : 9.120

Pim: 32 x 64



**Piston Özellikleri**  
(Piston Features)

Segman Taşıyıcı  
(Ring Carrier)  
Soğutma Kanallı  
(Coolin Gallery)  
Yağ Püskürtme Oyuğu  
(Oil Jet Cut-out)  
Burçlu Piston  
(Bushing Piston)  
Gözarası Konik  
(Conical Eye Gap)

**Piston Parça No**  
(Piston Part No)

87-816900-02  
87-70227-STD  
87-816907-02  
87-70227 0,50

**Segman Seti**  
(Ring Set)

06-816900-00-STD  
06-816907-00 0,50  
1.500 GDC ST  
1.500 P F14  
2.000 CR GOE

**Silindir Gömleği**  
(Liner)

**Silindir Kit**  
(Assembly Set)

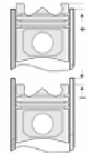
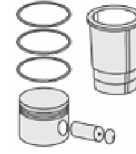
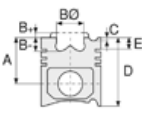
**Piston - Blok Montaj**  
**Yüksekliği**  
(Piston - Block  
Assembly Height)





BMW- Ø 84

87-70228-STD



**Motor Özellikleri**  
(Engine Specifications)

**Piston Ölçüleri**  
(Piston Dimensions)

**Piston Parça No**  
(Piston Part No)

**Segman Seti**  
(Ring Set)

**Silindir Gömleği**  
(Liner)

**Silindir Kit**  
(Assembly Set)

**Piston - Blok Montaj**  
**Yüksekliği**  
(Piston - Block  
Assembly Height)

İmalatçı (Manufacturer):  
BMW  
Çap (Diameter): 84  
FM Grup No: 1442

A : 29.800  
C1 : 5.100  
C2 : 5.200  
D : 50.800  
E : 6.900

87-815900-02  
87-70228 STD  
  
87-815907-02  
87-70228 050

06-815900-50-STD  
06-815907-50 0,50 mm  
  
1.200 NT ST  
1.500 P GOE  
2.000 CR ST

**N42 B18**  
4 Sil. Benzinli 1796cc 85  
Kw(116 PS) 10,25:1  
316 1.8i 16V (E46)  
2001 - 2004

Pim: 20 x 50



**N42 B20**  
4 Sil. Benzinli 1995cc  
105 Kw(143 PS) 10:1  
318 2.0i 16V (E46)  
2001 - 2004



**N45 B16**  
4 Sil. Benzinli 1596cc  
85 Kw(116 PS) 10,25:1  
116 1.6i 16V (E87),  
316 1.6i 16V (E46),  
316 1.6i 16V (E90),  
316 1.6i 16V (E92)  
2004 - 2007

**Piston Özellikleri**  
(Piston Features)

Gözarası Konik  
(Conical Eye Gap)

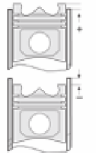
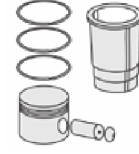
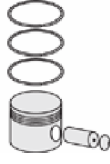
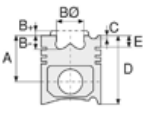
**N46 B20**  
4 Sil. Benzinli 1995cc  
105 Kw(143 PS) 10,20:1  
318 2.0i 16V (E46)  
2004 - 2005





BMW- Ø 84

87-70229-STD



**Motor Özellikleri**  
(Engine Specifications)

İmalatçı (Manufacturer):  
BMW  
Çap (Diameter): 84  
FM Grup No: 1440

**M54 B30**  
6 Sil. Benzinli 2979cc  
170 KW (231 PS)  
330 İ, 530i, 730 İ, X3, X5,  
Z3, Z4  
2000 - 2006

**Piston Ölçüleri**  
(Piston Dimensions)

A : 28.320  
C1 : 0.710  
D : 48.320  
E : 4.860

Pim: 22 x 56



**Piston Özellikleri**  
(Piston Features)

Gözarası Düz  
(Flat Eye Gap)

**Piston Parça No**  
(Piston Part No)

87-815800-02  
87-70229-STD  
87-815807-02  
87-70229-050

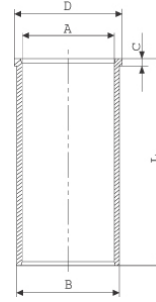
**Segman Seti**  
(Ring Set)

06-815800-00-STD  
06-815807-00 0,50  
1.200 NT ST  
1.500 P STD  
2.000 P KV1

Goetze® LKZ-Ring®

**Silindir Gömleği**  
(Liner)

114-020710-00 D  
B : 87.000  
L : 137.000  
D : 88.500  
C : 6.000



**Silindir Kit**  
(Assembly Set)

**Piston - Blok Montaj**  
**Yüksekliği**  
(Piston - Block  
Assembly Height)

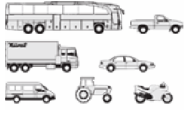
-2,00 / -2,20





BMW- Ø 84

87-70230-STD



**Motor Özellikleri**  
(Engine Specifications)

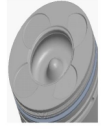
İmalatçı (Manufacturer):  
BMW  
Çap (Diameter): 84  
FM Grup No: 1436

**M57D30**  
6 Sil. Dizel 2926cc  
135 Kw (184 PS) 18:1  
Turbo intercool /  
Land Rover ile ortak motor  
(Common Engine With  
Land Rover)  
FREE LANDER M47 D  
20R / RANGE ROVER TD6  
330 D, 530 D, 730 D  
1999...

**Piston Ölçüleri**  
(Piston Dimensions)

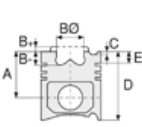
A : 47.000  
B- : 16.500  
BØ : 41.550  
C1 : 1.360  
C2 : 1.480  
D : 71.000  
E : 9.000

Pim: 30 x 68



**Piston Özellikleri**  
(Piston Features)

Segman Taşıyıcı  
(Ring Carrier)  
Soğutma Kanallı  
(Coolin Gallery)  
Yağ Püskürtme Oyuğu  
(Oil Jet Cut-out)  
Gözarası Konik  
(Conical Eye Gap)



**Piston Parça No**  
(Piston Part No)

87-114400-02  
87-70230-STD  
87-114405-02  
87-70230 025  
87-115507-02  
87-70230 050



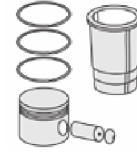
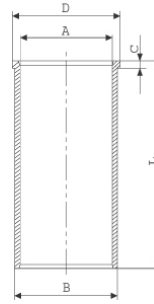
**Segman Seti**  
(Ring Set)

06-114400-00-STD  
06-114405-00 0,25 mm  
06-114407-00 0,50 mm  
3.000 CKP KVI  
2.000 P STD  
3.000 CRP STD

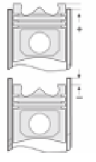


**Silindir Gömleği**  
(Liner)

14-217800-00 D  
B : 87.000  
L : 149.000  
D : 88.500  
C : 6.000



**Silindir Kit**  
(Assembly Set)



**Piston - Blok Montaj**  
**Yüksekliği**  
(Piston - Block  
Assembly Height)

1.Kertik conta(Notch Seal)  
ile +0,80 /+0,90

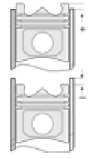
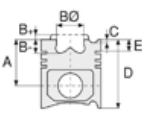
2.Kertik conta (Notch Seal)  
ile +0,90 / +1,00





BMW- Ø 84

87-70233-STD



**Motor Özellikleri**  
(Engine Specifications)

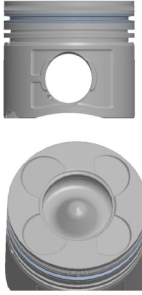
İmalatçı (Manufacturer):  
BMW  
Çap (Diameter): 84  
FM Grup No: 1437

**M47D20**  
4 Sil. Dizel 1951cc  
100 Kw(136 PS) 19:1  
Turbo intercool  
320 D, 520 D  
1998...

**Piston Ölçüleri**  
(Piston Dimensions)

A : 47.000  
B- : 15.000  
B : 41.700  
C1 : 1.360  
C2 : 1.480  
D : 71.000  
E : 9.000

Pim: 30 x 68



**Piston Özellikleri**  
(Piston Features)

Segman Taşıyıcı  
(Ring Carrier)  
Soğutma Kanallı  
(Coolin Gallery)  
Yağ Püskürtme Oyuğu  
(Oil Jet Cut-out)  
Gözarası Konik  
(Conical Eye Gap)

**Piston Parça No**  
(Piston Part No)

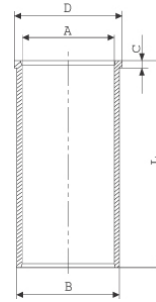
87-114400-22  
87-70233-STD  
87-114405-22  
87-70233-025  
87-114407-22  
87-70233-050

**Segman Seti**  
(Ring Set)

06-114400-00-STD  
06-114405-00 0,25 mm  
06-114407-00 0,50 mm  
3.000 CKP KVI  
2.000 P STD  
3.000 CRP STD

**Silindir Gömleği**  
(Liner)

14-021780-00 D  
B : 87.000  
L : 149.000  
D : 88.500  
C : 6.000



**Silindir Kit**  
(Assembly Set)

**Piston - Blok Montaj**  
**Yüksekliği**  
(Piston - Block  
Assembly Height)

1,45 mm Conta ile  
(With Notch) 0,72 / 0,83

1,50 mm Conta ile  
(With Notch) 0,84 / 0,93

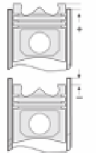
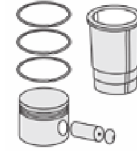
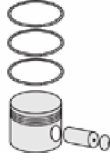
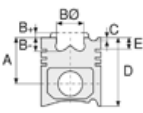
1,60 mm Conta ile  
(With Notch) 0,94/1,05





BMW- Ø 84

87-70246-STD



**Motor Özellikleri**  
(Engine Specifications)

İmalatçı (Manufacturer):  
BMW  
Çap (Diameter): 84  
FM Grup No: 1447

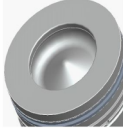
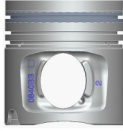
**N47D EURO 4**

4 Sil. Dizel 1995cc  
85-130 KW (115-177 HP)  
16:1  
116d, 118d, 120d, 318d,  
320d, 520d, X3 2,0d  
2004 - 2011

**Piston Ölçüleri**  
(Piston Dimensions)

A : 47.000  
B- : 15.250  
BØ : 47.500  
D : 73.000  
E : 9.120

Pim: 32 x 64



**Piston Özellikleri**  
(Piston Features)

Segman Taşıyıcı  
(Ring Carrier)  
Soğutma Kanallı  
(Coolin Gallery)  
Yağ Püskürtme Oyuğu  
(Oil Jet Cut-out)  
Gözarası Konik  
(Conical Eye Gap)

**Piston Parça No**  
(Piston Part No)

87-816307-03  
87-70246-0501  
0,20 mm kısa (short)

87-816300-02  
87-70246-STD

87-816307-02  
87-70246 0,50

87-816300-03  
87-70246-STD1  
0,20 mm kısa (short)

**Segman Seti**  
(Ring Set)

06-815700-00-STD  
06-815707-00 0,50

1.750 GDC KV1  
1.750 F14  
2.000 CR GOE

Goetze® LKZ-Ring® / Yağ  
segmanı matkap delikli  
(Oil Ring Drill Perforated)

**Silindir Gömleği**  
(Liner)

**Silindir Kit**  
(Assembly Set)

**Piston - Blok Montaj**  
Yüksekliği  
(Piston - Block  
Assembly Height)

1 Kertik (1.46 ) conta  
ile (With Notch)  
0.80/0.92 mm

2 Kertik ( 1.55 ) conta  
ile (With Notch)  
0.93/1.03 mm

3 Kertik ( 1.66 ) conta  
ile (With Notch)  
1.04/1.20 mm





BMW- Ø 84

87-70257-STD

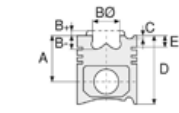


**Motor Özellikleri**  
(Engine Specifications)

İmalatçı (Manufacturer):  
BMW  
Çap (Diameter): 84  
FM Grup No: 1448

**N 47TU**

4 Sil. Dizel 1995cc  
135 Kw-181HP 16,5:1  
318d, 320d, 520d, 525d  
2013...



**Piston Ölçüleri**  
(Piston Dimensions)

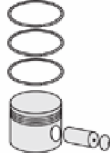
A : 47.000  
B- : 14.500  
BØ : 47.500  
D : 73.000  
E : 9.120

Pim: 32 x 64



**Piston Özellikleri**  
(Piston Features)

Segman Taşıyıcı  
(Ring Carrier)  
Soğutma Kanallı  
(Coolin Gallery)  
Yağ Püskürtme Oyuğu  
(Oil Jet Cut-out)  
Gözarası Konik  
(Conical Eye Gap)



**Piston Parça No**  
(Piston Part No)

87-817407-03  
87-70257-0501  
0,20 mm kısa

87-817400-02  
87-70257-STD

87-817407-02  
87-70257 0,50

87-817400-03  
87-70257-STD1  
0,20 mm kısa



**Segman Seti**  
(Ring Set)

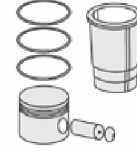
06-817400-00-STD  
06-817407-00 0,50 mm

1.750 CK KV1  
1.750 P F14  
2.000 CR GOE

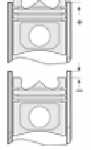
Yağ segmanı matkap delik  
(Oil Ring Drill Perforated)



**Silindir Gömleği**  
(Liner)



**Silindir Kit**  
(Assembly Set)



**Piston - Blok Montaj**  
**Yüksekliği**  
(Piston - Block  
Assembly Height)

1 çentik conta ile  
(With Notch) 0,72 / 0,83

2 çentik conta ile  
(With Notch) 0,84 / 0,93

3 çentik contaile  
(With Notch) 0,94 / 1,05







BMW- Ø 84

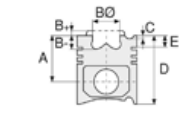
87-70267-STD



**Motor Özellikleri**  
(Engine Specifications)

İmalatçı (Manufacturer):  
BMW  
Çap (Diameter): 84  
FM Grup No: 1455

**B37A-B / B47B**  
3 Sil. Dizel 1496cc  
(70–85 KW)95–116  
PS 16.5:1  
114d, 214d, MINI One  
2012...



**Piston Ölçüleri**  
(Piston Dimensions)

A : 42.500  
B - : 14.150  
BØ : 47.500  
D : 65.500  
E : 10.500

Pim: 28 x 60



**Piston Özellikleri**  
(Piston Features)

Segman Taşıyıcı  
(Ring Carrier)  
Soğutma Kanallı  
(Coolin Gallery)  
Yağ Püskürtme Oyuğu  
(Oil Jet Cut-out)  
Gözarası Konik  
(Conical Eye Gap)






**Piston Parça No**  
(Piston Part No)

87-816800-02  
87-70267-STD  
87-816807-02  
87-70267 0,50 mm

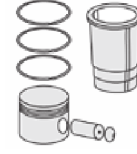


**Segman Seti**  
(Ring Set)

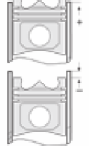
06-816800-00-STD  
06-816807-00 0,50 mm  
1.500  GDC ST  
1.500  P F14  
2.000  CR GOE



**Silindir Gömleği**  
(Liner)



**Silindir Kit**  
(Assembly Set)



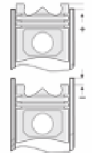
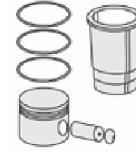
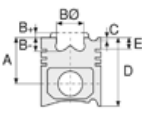
**Piston - Blok Montaj**  
**Yüksekliği**  
(Piston - Block  
Assembly Height)





BMW- Ø 84

87-70268-STD



**Motor Özellikleri**  
(Engine Specifications)

**Piston Ölçüleri**  
(Piston Dimensions)

**Piston Parça No**  
(Piston Part No)

**Segman Seti**  
(Ring Set)

**Silindir Gömleği**  
(Liner)




**Silindir Kit**  
(Assembly Set)

**Piston - Blok Montaj**  
**Yüksekliği**  
(Piston - Block  
Assembly Height)

İmalatçı (Manufacturer):  
BMW  
Çap (Diameter): 84  
FM Grup No: 1456

A : 47.000  
B - : 14.150  
BØ : 47.500  
D : 73.000  
E : 9.120

87-816800-22  
87-70268-STD  
  
87-816807-22  
87-70268 0,50

06-816800-00-STD  
06-816807-00 0,50 mm  
  
1.500  GDC ST  
1.500  P F14  
2.000  CR GOE

**B47D**

4 Sil. Dizel 1995cc  
85-170 Kw (116-231 PS)  
16.5:1  
118d, 218d, 316d, X1-X2-X3  
2014



**Piston Özellikleri**  
(Piston Features)

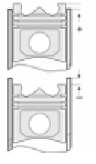
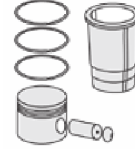
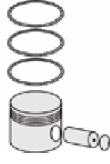
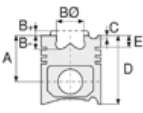
Segman Taşıyıcı  
(Ring Carrier)  
Soğutma Kanallı  
(Coolin Gallery)  
Yağ Püskürtme Oyuğu  
(Oil Jet Cut-out)  
Burçlu Piston  
(Bushing Piston)  
Gözarası Konik  
(Conical Eye Gap)





BMW- Ø 84

87-70269-STD



**Motor Özellikleri**  
(Engine Specifications)

İmalatçı (Manufacturer):  
BMW  
Çap (Diameter): 84  
FM Grup No: 1457

**B37 D15 A**  
3 Sil. Dizel 1496cc  
85 KW-116 PS 16,5  
114 d, 116 d  
2015...

**Piston Ölçüleri**  
(Piston Dimensions)

A : 42.000  
B- : 14.500  
BØ : 47.500  
D : 65.000  
E : 10.000

Pim: 28 x 60






**Piston Özellikleri**  
(Piston Features)

Segman Taşıyıcı  
(Ring Carrier)  
Soğutma Kanallı  
(Coolin Gallery)  
Yağ Püskürtme Oyuğu  
(Oil Jet Cut-out)  
Gözarası Konik  
(Conical Eye Gap)

**Piston Parça No**  
(Piston Part No)

87-816700-02  
87-70269-STD  
87-816707-02  
87-70269 0,50

**Segman Seti**  
(Ring Set)

06-816700-00-STD  
06-816707-00 0,50  
1.500  GDC KV4  
1.500  P F14  
2.000  CR GOE

**Silindir Gömleği**  
(Liner)

**Silindir Kit**  
(Assembly Set)

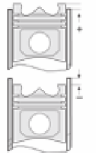
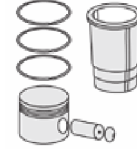
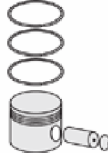
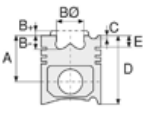
**Piston - Blok Montaj**  
**Yüksekliği**  
(Piston - Block  
Assembly Height)





BMW- Ø 85

87-70222-STD



**Motor Özellikleri**  
(Engine Specifications)

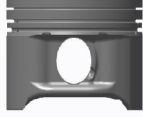
İmalatçı (Manufacturer):  
BMW  
Çap (Diameter): 85  
FM Grup No: 1422

**M43B 19-E 46**  
4 Sil. Benzinli 1895cc  
87Kw (118PS) 9,7:1  
Enjektörlü, katalizörlü  
(With Injector, With  
Catalyst)  
318i., Z3.  
1998

**Piston Ölçüleri**  
(Piston Dimensions)

A : 30.400  
B- : 4.000  
BØ : 70.000  
BX : 3.800  
BY : 4.000  
D : 53.900  
E : 9.000

Pim: 22 x 53,8






**Piston Özellikleri**  
(Piston Features)

Sert Anotlama  
(Hard Anodizing)  
Gözarası Düz  
(Flat Eye Gap)

**Piston Parça No**  
(Piston Part No)

87-137200-02  
87-70222-STD  
87-137207-02  
87-70222-050

**Segman Seti**  
(Ring Set)

06-137200-50-STD  
06-137207-50 0,50  
1.200  NT ST  
1.500  P GOE  
2.000  CR ST

**Silindir Gömleği**  
(Liner)

**Silindir Kit**  
(Assembly Set)

**Piston - Blok Montaj**  
**Yüksekliği**  
(Piston - Block  
Assembly Height)





BMW - Ø 86

06-129500-00-STD



**Motor Özellikleri**  
(Engine Specifications)

İmalatçı (Manufacturer):  
BMW  
Çap (Diameter): Ø 86  
FM Grup No: 1417

**M30B 25L**  
6 Sil. Benzinli 2494cc  
Enjektörlü (With Injector)  
525i, 728i  
1981 - 1987

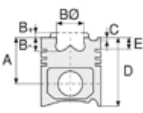
**M30B 25V**  
6 Sil. Benzinli 2494cc  
106Kw (145PS)  
2.5CS, 2500, 525  
1976 - 1981

**M30B 25**  
6 Sil. Benzinli 2494cc  
9,1:1 2.5CS, 2500, 525  
1977....

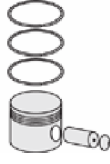
**M30B 28**  
6 Sil. Benzinli 2788cc  
121,5Kw (165PS) 9:1  
Karbüratörlü (With  
Carburetor)  
2800,2800CS, 528  
E12 Serisi  
1974 - 1979

**M30B 28E3**  
6 Sil. Benzinli 2788cc  
121/125Kw (165/170PS) 9:1  
Enjektörlü (With Injector)  
2800i E23 Serisi, 525i  
E12 Serisi, 528i E28 Serisi,  
728i E23 Serisi  
1977....

**M30B 28L**  
6 Sil. Benzinli 2788cc  
135Kw (184PS) 9,3:1  
Enjektörlü (With Injector)  
2500,2800, 525, 525i,  
528i, 628i, 728i, 530,  
628 Csi  
1977 - 1987



**Piston Ölçüleri**  
(Piston Dimensions)



**Piston Parça No**  
(Piston Part No)



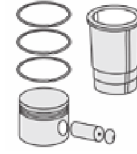
**Segman Seti**  
(Ring Set)

06-129500-00-STD  
06-129507-00 0,50 mm

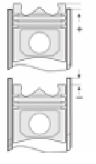
1.750 CRP KV1  
2.000 P STD  
4.000 CRP STD



**Silindir Gömleği**  
(Liner)



**Silindir Kit**  
(Assembly Set)

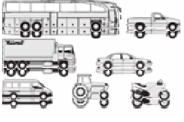


**Piston - Blok Montaj**  
Yüksekliği  
(Piston - Block  
Assembly Height)



BMW - Ø 89

06-700200-20-STD

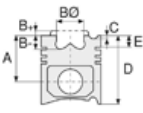


**Motor Özellikleri**  
(Engine Specifications)

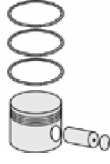
İmalatçı (Manufacturer):  
BMW  
Çap (Diameter): Ø 89  
FM Grup No : 1419

**M30B 30ME**

6 Sil. Benzinli (Benzinli)  
2985cc 145Kw (197PS)  
9,2:1  
Enjektörlü (With Injector)  
530i, 730i, 745i  
1987 - 1990



**Piston Ölçüleri**  
(Piston Dimensions)



**Piston Parça No**  
(Piston Part No)



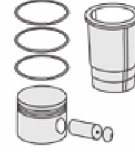
**Segman Seti**  
(Ring Set)

06-700200-20-STD

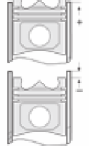
1.500  CRP KV1  
2.000  P STD  
3.500  CRP STD



**Silindir Gömleği**  
(Liner)



**Silindir Kit**  
(Assembly Set)



**Piston - Blok Montaj**  
Yüksekliği  
(Piston - Block  
Assembly Height)





BMW - Ø 92

06-133900-00-STD



**Motor Özellikleri**  
(Engine Specifications)

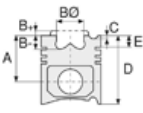
İmalatçı (Manufacturer):  
BMW  
Çap (Diameter): Ø 92  
FM Grup No: 1420

**M30B 35ME7**

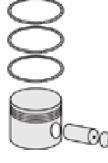
6 Sil. Benzinli (Gasoline)  
3430cc  
155Kw (211PS) 9:1  
Enjektörlü (With Injector),  
katalizörlü (With Catalyst)  
535i, M535i  
1985....

**M30B 35ME7**

6 Sil. Benzinli (Gasoline)  
3430cc 155/162Kw  
(211/220PS) 9:1  
Enjektörlü (With Injector)  
535i, 635 Csi, 735i, İl,  
M535i  
1988 - 1992



**Piston Ölçüleri**  
(Piston Dimensions)



**Piston Parça No**  
(Piston Part No)



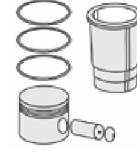
**Segman Seti**  
(Ring Set)

06-133900-00-STD

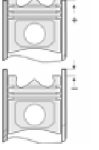
1.500 CRP KV1  
2.000 STD  
3.500 CR STD



**Silindir Gömleği**  
(Liner)



**Silindir Kit**  
(Assembly Set)



**Piston - Blok Montaj**  
Yüksekliği  
(Piston - Block  
Assembly Height)





BMW - Ø 92

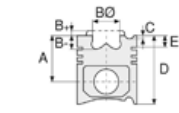
87-70206-STD



**Motor Özellikleri**  
(Engine Specifications)

İmalatçı (Manufacturer):  
BMW  
Çap (Diameter): Ø 92  
FM Grup No : 1449

**M 62 B44LEV**  
8 Sil. Benzinli (Gasoline)  
4395cc 210KW/286 PS  
540i, 740i, 840i, X5  
1996 ....



**Piston Ölçüleri**  
(Piston Dimensions)

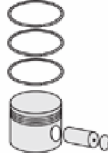
A : 31.300  
C1 : 2.950  
D : 53.300  
E : 7.300

Pim: 22 x 60



**Piston Özellikleri**  
(Piston Features)

Sert Anotlama  
(Hard Anodizing)  
Gözarası düz  
(Flat Eye Gap)



**Piston Parça No**  
(Piston Part No)




87-816200-02  
87-70206-STD

87-816207-02  
87-70206 0,50



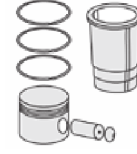
**Segman Seti**  
(Ring Set)

06-816200-50-STD  
06-816207-50 0,50

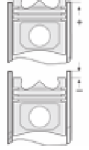
1.500  NT ST  
1.500  P F14  
2.000  CR ST



**Silindir Gömleği**  
(Liner)



**Silindir Kit**  
(Assembly Set)



**Piston - Blok Montaj**  
Yüksekliği  
(Piston - Block  
Assembly Height)

