



CASE - Ø 95

87-73517-STD A



Motor Özellikleri
(Engine Specifications)

Piston Ölçüleri
(Piston Dimensions)

Piston Parça No
(Piston Part No)

Segman Seti
(Ring Set)

Silindir Gömleği
(Liner)

Silindir Kit
(Assembly Set)

Piston - Blok Montaj
Yüksekliği
(Piston - Block
Assembly Height)

İmalatçı (Manufacturer):
CASE
Çap (Diameter): Ø 95
FM Grup No: 1606

A : 62.100
B- : 21.000
BØ : 50.000
BX : 4.500
BY : 0.500
D : 99.750
E : 12.700

87-881000-12
87-73517-STD A

06-881000-90-STD

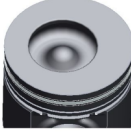
14-010380-00-D

+0,23 / +0,35

903.27 EURO 1

Dizel
Turbo / Perkins ile
ortak motor (Common
Engine With Turbo /
Perkins)
3X20 RTK, CE81176 TRK,
KEPÇE(CR50624,
CR50626)

Pim: 31,75 x 75



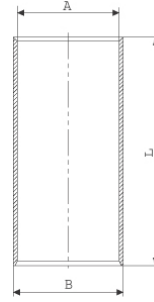
Piston Özellikleri
(Piston Features)

Segman Taşıyıcı
(Ring Carrier)
Gözarası Düz
(Flat Eye Gap)

3.000 CKP KV1
2.000 P F14
4.000 CRP GOE

Goetze® LKZ-Ring®

B : 97.100
L : 216.000





CASE - Ø 100

87-73514-STD A



Motor Özellikleri
(Engine Specifications)

İmalatçı (Manufacturer):
CASE
Çap (Diameter): Ø 100
FM Grup No: 1607

Dizel

Yeşil 1 Gold Perkins ile
Ortak Motor (Common
Engine With Perkins)
AT50765 TRK, İş Mak.
(Working Machine)

Piston Ölçüleri
(Piston Dimensions)

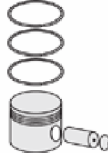
A : 70.266
B- : 21.750
BØ : 52.800
BX : 3.200
BY : 2.500
D : 108.230
E : 10.400

Pim: 39,7 x 78



Piston Özellikleri
(Piston Features)

Segman Taşıyıcı
(Ring Carrier)
Gözarası Konik
(Conical Eye Gap)



Piston Parça No
(Piston Part No)

87-883700-12
87-73514-STD A



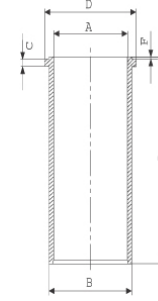
Segman Seti
(Ring Set)

06-883700-90-STD
3.500 CKP KV1
2.500 P F14
3.500 CRP STD



Silindir Gömleği
(Liner)

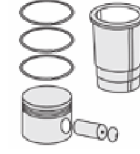
14-049300-00-D
B : 104.280
L : 227.560
D : 107.442
C : 3.860
F : 0.940



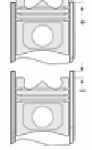
14-049301-10-D

B : 104.780
L : 227.560
D : 108.000
C : 4.250
F : 0.940

Dış Çap 0,50mm Farklı
(Outer Diameter
0,50 mm Different)



Silindir Kit
(Assembly Set)



Piston - Blok Montaj
Yüksekliği
(Piston - Block
Assembly Height)





CASE - Ø 101,6

14-480540-00-WH

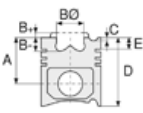


Motor Özellikleri
(Engine Specifications)

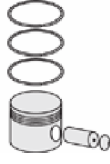
İmalatçı (Manufacturer):
CASE
Çap (Diameter): Ø 101,6
FM Grup No : 1612

G-207D N.A

4 Sil. Dizel
60 hp 44 kw
580 D Backhoe Loader



Piston Ölçüleri
(Piston Dimensions)



Piston Parça No
(Piston Part No)

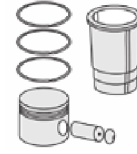
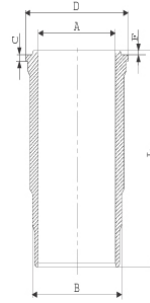


Segman Seti
(Ring Set)

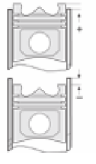


Silindir Gömleği
(Liner)

14-480540-00-WH
B : 108.547
L : 187.198
D : 115.316
C : 6.273
F : 1.016



Silindir Kit
(Assembly Set)



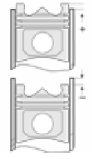
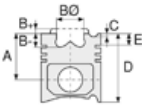
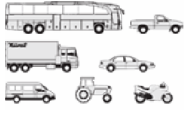
Piston - Blok Montaj
Yüksekliği
(Piston - Block
Assembly Height)





CASE - Ø 103

87-73515-STD A



Motor Özellikleri
(Engine Specifications)

İmalatçı (Manufacturer):
CASE
Çap (Diameter): Ø 103
FM Grup No: 1608

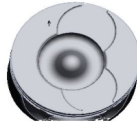
1004.42 EURO1

Dizel
Perkins İle Ortak Motor
(Common Engine With
Perkins)
AR81273 TRK
2001....

Piston Ölçüleri
(Piston Dimensions)

A : 70.300
B- : 22.000
BØ : 52.350
BX : 3.300
BY : 2.600
C1 : 1.100
C2 : 1.500
D : 108.230
E : 9.950

Pim: 39,7 x 74



Piston Özellikleri
(Piston Features)

Gözarası Konik
(Conical Eye Gap)

Piston Parça No
(Piston Part No)

87-893707-13
87-73515-0501A
0,20 mm Kısa (Short)

87-893700-13
87-73515-STD1A
0,20 mm Kısa (Short)

87-893700-12
87-73515-STD A

87-893707-12
87-73515 0,50

Segman Seti
(Ring Set)

06-893700-90-STD
06-893707-90 0,50 mm

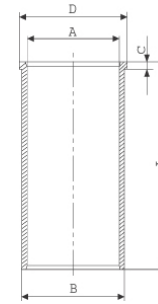
2.500 CKP KV1
2.500 P F14
3.500 CRP GOE

Goetze® LKZ-Ring®

Silindir Gömleği
(Liner)

14-020590-00-D

B : 107.050
L : 228.000
D : 110.050
C : 4.000



Silindir Kit
(Assembly Set)

Piston - Blok Montaj
Yüksekliği
(Piston - Block
Assembly Height)

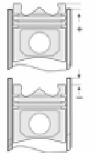
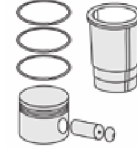
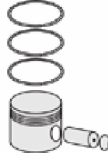
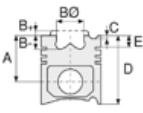
1,70 mm Conta İle
(With Gasket)
+0,35/+0,55





CASE - Ø 110,05

86-70316-STD



Motor Özellikleri
(Engine Specifications)

Piston Ölçüleri
(Piston Dimensions)

Piston Parça No
(Piston Part No)

Segman Seti
(Ring Set)

Silindir Gömleği
(Liner)

Silindir Kit
(Assembly Set)

Piston - Blok Montaj
Yüksekliği
(Piston - Block
Assembly Height)

İmalatçı (Manufacturer):
CASE
Çap (Diameter): Ø 110,05
FM Grup No: 1601

A : 60.320
B- : 19.350
BØ : 58.700
BX : 8.740
C1 : 5.510
D : 105.560
E : 15.870

86-70316-STD
86-70316-STD

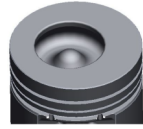
2.380
2.380
2.380
4.760

AD3/55
3 Sil. Dizel 2695cc 17:1
Direkt Püskürtme
(Direct Spray)

Pim: 31,75 x 87,3



DAWID BROWN 1190,
DAWID BROWN 1194,
DAWID BROWN 780,
DAWID BROWN 880,
DAWID BROWN 885



AD4/55
4 Sil. Dizel 3594cc 17:1
Direkt Püskürtme /
Perkins ile ortak motor
(Direct Spray / Common
Engine With Perkins)

Piston Özellikleri
(Piston Features)

Gözarası Düz
(Flat Eye Gap)

DAWID BROWN 1200,
DAWID BROWN 1210,
DAWID BROWN 1212,
DAWID BROWN 1290,
DAWID BROWN 1294,
DAWID BROWN 1390,
DAWID BROWN 995,
DAWID BROWN 996





CASE - Ø 111

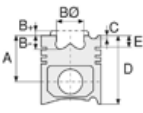
06-823900-00-STD



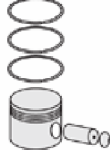
Motor Özellikleri
(Engine Specifications)

İmalatçı (Manufacturer):
CASE
Çap (Diameter): Ø 111
FM Grup No : 1609

A451BD
6 Sil. Dizel
1070 Traktör
1978....



Piston Ölçüleri
(Piston Dimensions)



Piston Parça No
(Piston Part No)



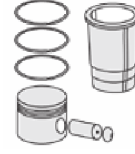
Segman Seti
(Ring Set)

06-823900-00-STD

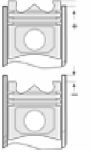
2.370  CRP KV1
2.385  P GOE
6.335  CRP GOE



Silindir Gömleği
(Liner)



Silindir Kit
(Assembly Set)



Piston - Blok Montaj
Yüksekliği
(Piston - Block
Assembly Height)





CASE - Ø 117

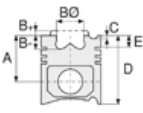
14-480680-00-WH



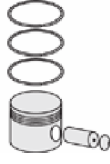
Motor Özellikleri
(Engine Specifications)

İmalatçı (Manufacturer):
CASE
Çap (Diameter): Ø 117
FM Grup No: 1611

336504



Piston Ölçüleri
(Piston Dimensions)



Piston Parça No
(Piston Part No)

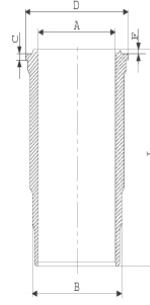


Segman Seti
(Ring Set)

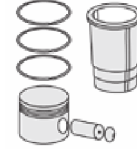


Silindir Gömleği
(Liner)

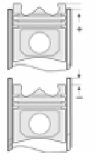
14-480680-00-WH
B: 128.854
L: 260.299
D: 137.591
C: 6.426
F: 0.965



İndüksiyonlu
(Induction)



Silindir Kit
(Assembly Set)



Piston - Blok Montaj
Yüksekliği
(Piston - Block
Assembly Height)

