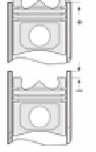
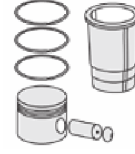
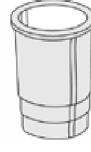
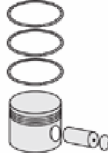
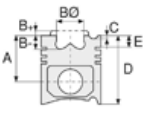




CHEVROLET - Ø 79

87-73476-STD



Motor Özellikleri
(Engine Specifications)

İmalatçı (Manufacturer):
CHEVROLET
Çap (Diameter): Ø 79
FM Grup No: 6690

F16D3-F16D4 EURO 5
4 Sil. Benzinli 1598cc
74 kW / 101 PS
Cruze J300 sedan
2009...

Piston Ölçüleri
(Piston Dimensions)

A : 27.000
C1 : 2.620
C2 : 2.700
D : 44.600
E : 4.750

Pim: 19 x 49,8



Piston Özellikleri
(Piston Features)

Sert Anotlama
(Hard Anodizing)
Gözarası Konik
(Conical Eye Gap)

Piston Parça No
(Piston Part No)

87-880300-02
87-73476-STD
87-880307-02
87-73476 0,50

Segman Seti
(Ring Set)

06-880300-50 STD
06-880307-50 0,50

1.200 NT ST
1.200 P GOE
2.000 CR GOE

Silindir Gömleği
(Liner)

Silindir Kit
(Assembly Set)

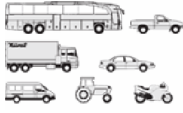
Piston - Blok Montaj
Yüksekliği
(Piston - Block
Assembly Height)





CHEVROLET - Ø 83

87-70340-STD



Motor Özellikleri
(Engine Specifications)

İmalatçı (Manufacturer):
CHEVROLET
Çap (Diameter): Ø 83
FM Grup No: 2120

Z 20S

4 Sil. Dizel 1991cc
110 Kw(150 BG)
OPEL ile Ortak Motor
(Common Engine With
Opel)
CAPTIVA 2.0 16V D
2006...

Piston Ölçüleri
(Piston Dimensions)

A : 46.350
B- : 13.950
B : 46.700
D : 72.350
E : 9.400

Pim: 28 x 66,8



Piston Özellikleri
(Piston Features)

Segman Taşıyıcı
(Ring Carrier)
Soğutma Kanallı
(Coolin Gallery)
Yağ Püskürtme Oyuğu
(Oil Jet Cut-out)
Gözarası Konik
(Conical Eye Gap)



Piston Parça No
(Piston Part No)

87-879200-02
87-70340-STD
87-879207-02
87-70340 050

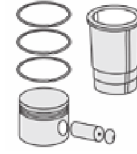


Segman Seti
(Ring Set)

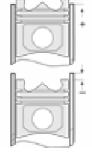
06-879200-00-STD
06-879207-00 0.50 mm
2.000 CKS KV1
2.000 P F14
3.000 NT ST



Silindir Gömleği
(Liner)



Silindir Kit
(Assembly Set)



Piston - Blok Montaj
Yüksekliği
(Piston - Block
Assembly Height)

1 Kertik (Notch)
0.11 / 0.23
2 Kertik (Notch)
0.24 / 0.33
3 Kertik (Notch)
0.34 / 0.42

