



CONTINENTAL - Ø 50,8

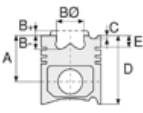
06-821700-00-STD



Motor Özellikleri
(Engine Specifications)

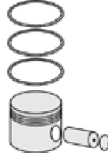
İmalatçı (Manufacturer):
CONTINENTAL
Çap (Diameter): Ø 50,8
FM Grup No: 2001

M62
2 Sil. Dizel
Hava Kompresörü
(Air Compressor)



Piston Ölçüleri
(Piston Dimensions)

Piston Özellikleri
(Piston Features)



Piston Parça No
(Piston Part No)



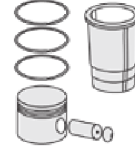
Segman Seti
(Ring Set)

06-821700-00-STD

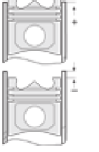
2.385  P STD
2.385  P STD
4.747  P STD



Silindir Gömleği
(Liner)



Silindir Kit
(Assembly Set)



Piston - Blok Montaj
Yüksekliği
(Piston - Block
Assembly Height)





CONTINENTAL - Ø 115,89

06-820000-10-STD

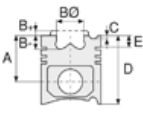


Motor Özellikleri
(Engine Specifications)

İmalatçı (Manufacturer):
CONTINENTAL

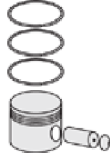
Çap (Diameter): Ø 115,89
FM Grup No: 2003

6 Sil. Dizel
M 543 A2



Piston Ölçüleri
(Piston Dimensions)

Piston Özellikleri
(Piston Features)



Piston Parça No
(Piston Part No)



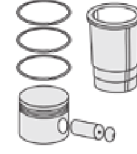
Segman Seti
(Ring Set)

06-820000-10-STD

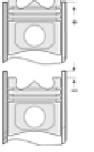
3.160		CRP	KVI
3.160		CRP	KVI
2.385		CRP	STD
4.747		CRP	STD



Silindir Gömleği
(Liner)



Silindir Kit
(Assembly Set)



Piston - Blok Montaj
Yüksekliği
(Piston - Block
Assembly Height)





CONTINENTAL - Ø 123,82

87-70403-STD



Motor Özellikleri
(Engine Specifications)

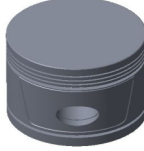
İmalatçı (Manufacturer):
CONTINENTAL
Çap (Diameter): Ø 123,82
FM Grup No: 2004

6 Sil. Dizel
M 62

Piston Ölçüleri
(Piston Dimensions)

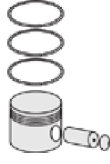
A : 92.100
D : 150.800
E : 13.600

Pim: 38,1 x 101,2



Piston Özellikleri
(Piston Features)

Gözarası Düz
(Flat Eye Gap)



Piston Parça No
(Piston Part No)

87-820700-02
87-70403-STD

87-820707-02
87-70403 0,020"

87-820711-02
87-70403 0,040"

87-820714-02
87-70403 0,060"



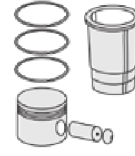
Segman Seti
(Ring Set)

06-820700-10-STD
06-820707-10 0,020"
06-820711-10 0,040"
06-820714-10 0,060"

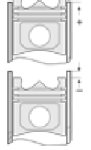
2.385 CRP STD
2.385 P STD
2.385 P STD
6.335 P STD
4.747 P STD



Silindir Gömleği
(Liner)



Silindir Kit
(Assembly Set)



Piston - Blok Montaj
Yüksekliği
(Piston - Block
Assembly Height)





CONTINENTAL - Ø 145,9

87-70405-STD

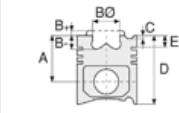


Motor Özellikleri
(Engine Specifications)

İmalatçı (Manufacturer):
CONTINENTAL
Çap (Diameter): Ø 145,9
FM Grup No: 2006

AV 1790/5B

12 Sil. Benzinli
G244, G256, G259,
G262, M48



Piston Ölçüleri
(Piston Dimensions)

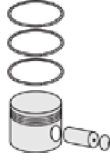
A : 82.950
C1 : 4.000
D : 124.200
E : 15.000

Pim: 34,93 x 114,4



Piston Özellikleri
(Piston Features)

Gözarası Düz
(Flat Eye Gap)



Piston Parça No
(Piston Part No)

87-823100-22
87-70405-STD

87-823105-22
87-70405 0,010"

87-823107-22
87-70405 0,020"

87-823109-22
87-70405 0,030"



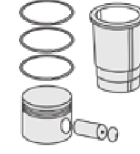
Segman Seti
(Ring Set)

06-823100-10-STD
06-823105-10 0,010"
06-823107-10 0,020"
06-823109-10 0,030"

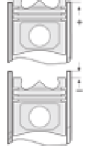
2.385 CRP IKA
2.385 CRP IKA
4.747 CRP STD
4.747 CRP STD



Silindir Gömleği
(Liner)



Silindir Kit
(Assembly Set)



Piston - Blok Montaj
Yüksekliği
(Piston - Block
Assembly Height)





CONTINENTAL - Ø 146,075

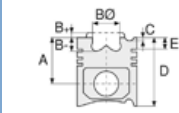
87-70409-STD



Motor Özellikleri
(Engine Specifications)

İmalatçı (Manufacturer):
CONTINENTAL
Çap (Diameter): Ø 146,075
FM Grup No: 2007

AVDS 1790
12 Sil. Dizel
M48 A5



Piston Ölçüleri
(Piston Dimensions)

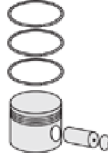
A : 98.900
B- : 25.390
B : 17.290
BØ : 92.400
C1 : 9.290
C2 : 10.140
D : 170.040

Pim: 54 x 122,55



Piston Özellikleri
(Piston Features)

Segman Taşıyıcı
(Ring Carrier)
Gözarası Konik
(Conical Eye Gap)



Piston Parça No
(Piston Part No)

87-823400-02
87-70409-STD

85-70409 0,10
Segmansız
(Without Segment)

85-70409 0,20
Segmansız
(Without Segment)

85-70409 0,30
Segmansız
(Without Segment)

85-70409 0,40
Segmansız
(Without Segment)

87-823405-02
87-70409 0,010"

87-823407-02
87-70409 0,020"


87-823409-02
87-70409 0,030"

87-823411-02
87-70409 0,040"



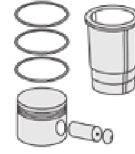
Segman Seti
(Ring Set)

06-823400-80-STD
06-823405-80 0,010"
06-823407-80 0,020"
06-823409-80 0,030"
06-823411-80 0,040"

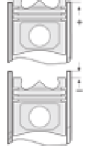
3.226  CK KV1
2.385  CK KV1
2.385  CK KV1
4.747  CRP STD



Silindir Gömleği
(Liner)



Silindir Kit
(Assembly Set)



Piston - Blok Montaj
Yüksekliği
(Piston - Block
Assembly Height)

