



CUMMINS - Ø 80

87-70410-STD

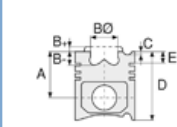


Motor Özellikleri
(Engine Specifications)

İmalatçı (Manufacturer):
CUMMINS
Çap (Diameter): Ø 80
FM Grup No: 2101

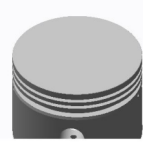
Hava Kompresörü
(Air Compressor)

1 Sil. Dizel
145-22, 162-25, 200-26
Fatih Kamyon



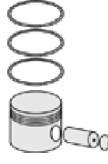
Piston Ölçüleri
(Piston Dimensions)

A : 33.500
D : 55.000
E : 4.000
Pim: 16 x 69,7



Piston Özellikleri
(Piston Features)

Gözarası Düz
(Flat Eye Gap)






Piston Parça No
(Piston Part No)

87-819500-02
87-70410-STD
87-819507-02
87-70410 050

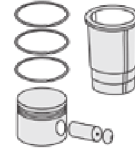


Segman Seti
(Ring Set)

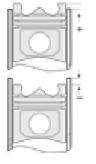
06-819500-00-STD
06-819507-00 0,50 mm
2.000  P STD
2.000  P STD
4.000  P STD



Silindir Gömleği
(Liner)



Silindir Kit
(Assembly Set)



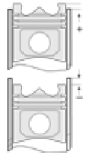
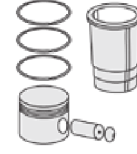
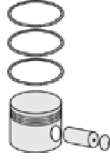
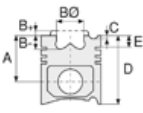
Piston - Blok Montaj
Yüksekliği
(Piston - Block
Assembly Height)





CUMMINS - Ø 80

87-73369-STD



Motor Özellikleri
(Engine Specifications)

Piston Ölçüleri
(Piston Dimensions)

Piston Parça No
(Piston Part No)

Segman Seti
(Ring Set)

Silindir Gömleği
(Liner)

Silindir Kit
(Assembly Set)

Piston - Blok Montaj
Yüksekliği
(Piston - Block
Assembly Height)

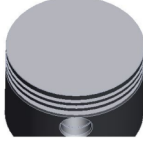
İmalatçı (Manufacturer):
CUMMINS
Çap (Diameter): Ø 80
FM Grup No: 2117

A : 31.080
D : 64.000
E : 4.500
Pim: 18 x 63

87-897900-02
87-73369 STD
87-897907-02
87-73369 0,50

06-897900-00-STD
06-897900-00 0,50 mm
2.500 P STD
2.500 P STD
4.000 P STD

B215/235.20 EURO2
KOMPRESÖR
(COMPRESSOR)
1 Sil.
BELDE 215 CB,
BELDE 850 RE,
PRO 522, PRO 624,
KOMPRESÖRPROBUS
850 TB/X



Piston Özellikleri
(Piston Features)

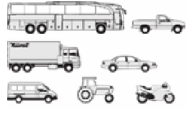
Gözarası Düz
(Flat Eye Gap)





CUMMINS - Ø 102

87-70413-STD



Motor Özellikleri
(Engine Specifications)

İmalatçı (Manufacturer):
CUMMINS
Çap (Diameter): Ø 102
FM Grup No: 2103

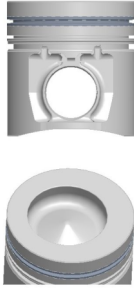
6BTAA 5,9

6 Sil. Dizel 5880cc
144Kw (193PS) 16,5:1
200-26 Fatih Kamyon
1991....

Piston Ölçüleri
(Piston Dimensions)

A : 71.535
B : 18.000
BØ : 63.560
BX : 2.620
D : 105.360
E : 14.360

Pim: 40 x 75,8



Piston Özellikleri
(Piston Features)

Segman Taşıyıcı
(Ring Carrier)
Göz Arası Konik
(Conical Between Eyes)



Piston Parça No
(Piston Part No)

87-155207-03
87-70413-0501
0,20 mm Kısa (Short)

87-155200-02
87-70413-STD

87-155207-02
87-70413 050

87-155200-03
87-70413-STD1
0,20mm Kısa (Short)



Segman Seti
(Ring Set)

06-155200-10-STD
06-155205-10 0,25 mm
06-155207-10 0,50 mm

3.000 CRP KV1
2.350 P F14
4.000 CRP STD

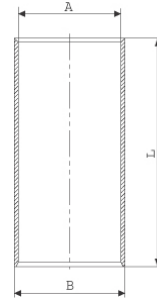
Goetze® LKZ-Ring®



Silindir Gömleği
(Liner)

14-014530-00-D

B : 104.565
L : 200.000



14-014531-00-D

B : 105.065
L : 200.000

Dış Çap 0,50mm Farklı
(Outer Diameter
0,50 mm Different)

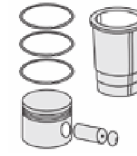
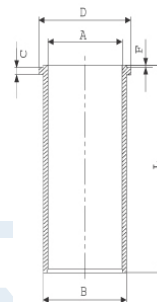
14-014532-00-D

B : 105.565
L : 200.000

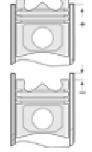
Dış Çap 1,00mm Farklı
(Outer Diameter
1,00 mm Different)

14-047310-00-D

B : 106.070
L : 204.800
D : 109.000
C : 4.050
F : 0.800



Silindir Kit
(Assembly Set)



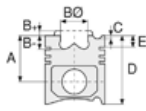
Piston - Blok Montaj
Yüksekliği
(Piston - Block
Assembly Height)

+ 0,33 / + 0,66

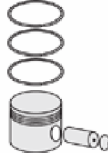




Motor Özellikleri
(Engine Specifications)



Piston Ölçüleri
(Piston Dimensions)



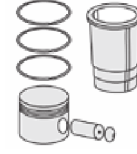
Piston Parça No
(Piston Part No)



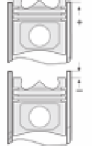
Segman Seti
(Ring Set)



Silindir Gömleği
(Liner)



Silindir Kit
(Assembly Set)



Piston - Blok Montaj
Yüksekliği
(Piston - Block
Assembly Height)

14-047311-00-D

B : 106.570
L : 204.800
D : 109.500
C : 5.050
F : 0.800

Dış Çap 0,50mm Farklı
(Outer Diameter
0,50 mm Different)

14-047312-00-D

B : 107.070
L : 204.800
D : 110.000
C : 5.050
F : 0.800

Dış Çap 1,00mm Farklı
(Outer Diameter
1,00 mm Different)

14-047313-00-D

B : 107.570
L : 204.800
D : 110.500
C : 5.500
F : 0.800

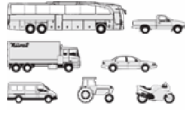
Dış Çap 1,50mm Farklı
(Outer Diameter
1,50 mm Different)





CUMMINS - Ø 102

87-70415-STD



Motor Özellikleri
(Engine Specifications)

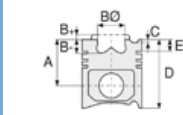
İmalatçı (Manufacturer):
CUMMINS
Çap (Diameter): Ø 102
FM Grup No: 2105

4BTA 3,9 Euro 2

4 Sil. Dizel 3920cc
78 Kw (105PS)
110-08 KAMYON,
29+1 BELDE MIDIBUS
1991....

6BT 5,9 Euro 2

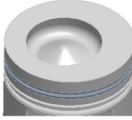
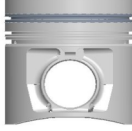
6 Sil. Dizel 5880cc
121 Kw (145/162PS)
170-25 KAMYON
1991....



Piston Ölçüleri
(Piston Dimensions)

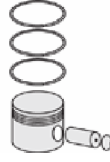
A : 71.560
B- : 17.700
BØ : 59.120
BX : 5.500
D : 105.360
E : 14.360

Pim: 40 x 75,8



Piston Özellikleri
(Piston Features)

Segman Taşıyıcı
(Ring Carrier)
Göz Arası Konik
(Conical Between Eyes)



Piston Parça No
(Piston Part No)

87-155207-23
87-70415-0501
0,20 mm Kısa (Short)

87-155200-22
87-70415-STD

87-155207-22
87-70415 050

87-155200-23
87-70415-STD1
0,20mm Kısa (Short)



Segman Seti
(Ring Set)

06-155200-10-STD
06-155205-10 0,25 mm
06-155207-10 0,50 mm

3.000 CRP KV1
2.350 P F14
4.000 CRP STD

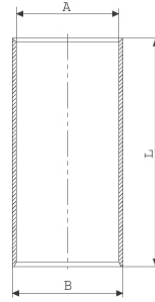
Goetze® LKZ-Ring®



Silindir Gömleği
(Liner)

14-014530-00-D

B : 104.565
L : 200.000



14-014531-00-D

B : 105.065
L : 200.000

Dış Çap 0,50mm Farklı
(Outer Diameter
0,50 mm Different)

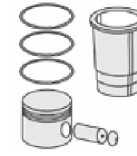
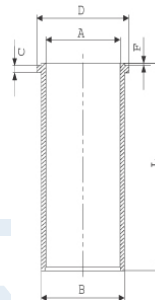
14-014532-00-D

B : 105.565
L : 200.000

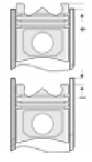
Dış Çap 1,00mm Farklı
(Outer Diameter
1,00 mm Different)

14-047310-00-D

B : 106.070
L : 204.800
D : 109.000
C : 4.050
F : 0.800



Silindir Kit
(Assembly Set)



Piston - Blok Montaj
Yüksekliği
(Piston - Block
Assembly Height)

+ 0,33 / + 0,66



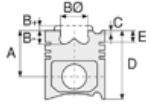


CUMMINS - Ø 102

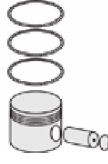
87-70415-STD



Motor Özellikleri
(Engine Specifications)



Piston Ölçüleri
(Piston Dimensions)



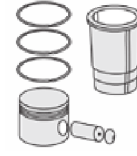
Piston Parça No
(Piston Part No)



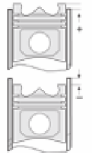
Segman Seti
(Ring Set)



Silindir Gömleği
(Liner)



Silindir Kit
(Assembly Set)



Piston - Blok Montaj
Yüksekliği
(Piston - Block
Assembly Height)

14-047311-00-D

B : 106.570
L : 204.800
D : 109.500
C : 5.050
F : 0.800

Dış Çap 0,50mm Farklı
(Outer Diameter
0,50 mm Different)

14-047312-00-D

B : 107.070
L : 204.800
D : 110.000
C : 5.050
F : 0.800

Dış Çap 1,00mm Farklı
(Outer Diameter
1,00 mm Different)

14-047313-00-D

B : 107.570
L : 204.800
D : 110.500
C : 5.500
F : 0.800

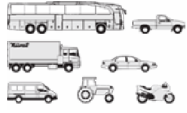
Dış Çap 1,50mm Farklı
(Outer Diameter
1,50 mm Different)





CUMMINS - Ø 102

87-73367-STD



Motor Özellikleri
(Engine Specifications)

İmalatçı (Manufacturer):
Cummins
Çap (Diameter): 102
FM Grup No: 2113

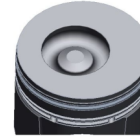
B215/235.20 EURO2

6 Sil. Dizel 5880cc
215/235 PS
BELDE 215 CB,
BELDE 850 RE, PRO 522,
PRO 624, PROBUS 850
TB/X
2003...

Piston Ölçüleri
(Piston Dimensions)

A : 71.785
B- : 22.100
BØ : 51.300
BX : 6.000
BY : 0.500
D : 105.610

Pim: 40 x 83



Piston Özellikleri
(Piston Features)

Segman Taşıyıcı
(Ring Carrier)
Gözarası Konik
(Conical Eye Gap)



Piston Parça No
(Piston Part No)

87-155205-42
87-73367-025

87-155200-42
87-73367-STD

87-155207-42
87-73367 050

87-155200-43
87-73367-STD1
0,20mm Kısa (Short)

87-155200-44
87-73367-STD2
0,40 mm Kısa (Short)



Segman Seti
(Ring Set)

06-155200-10-STD
06-155205-10 0,25 mm
06-155207-10 0,50 mm

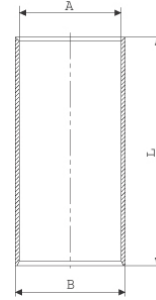
3.000 CRP KV1
2.350 P F14
4.000 CRP STD

Goetze® LKZ-Ring®



Silindir Gömleği
(Liner)

14-014530-00-D
B : 104.565
L : 200.000

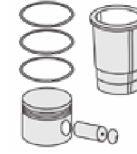


14-014531-00-D
B : 105.065
L : 200.000

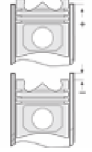
Dış Çap 0,50mm Farklı
(Outer Diameter
0,50mm Different)

14-014532-00-D
B : 105.565
L : 200.000

Dış Çap 1,00mm Farklı
(Outer Diameter
1,00mm Different)



Silindir Kit
(Assembly Set)



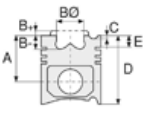
Piston - Blok Montaj
Yüksekliği
(Piston - Block
Assembly Height)

+0,33 / +0,66

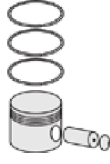




Motor Özellikleri
(Engine Specifications)



Piston Ölçüleri
(Piston Dimensions)



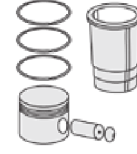
Piston Parça No
(Piston Part No)



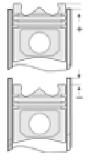
Segman Seti
(Ring Set)



Silindir Gömleği
(Liner)

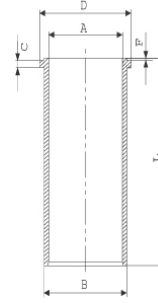


Silindir Kit
(Assembly Set)



Piston - Blok Montaj
Yüksekliği
(Piston - Block
Assembly Height)

14-047310-00-D
B : 106.070
L : 204.800
D : 109.000
C : 4.050
F : 0.800



14-047311-00-D
B : 106.570
L : 204.800
D : 109.500
C : 5.050
F : 0.800

Dış Çap 0,50mm Farklı
(Outer Diameter
0,50mm Different)

14-047312-00-D
B : 107.070
L : 204.800
D : 110.000
C : 5.050
F : 0.800

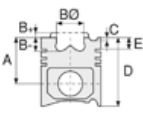
Dış Çap 1,00mm Farklı
(Outer Diameter
1,00mm Different)

14-047313-00-D
B : 107.570
L : 204.800
D : 110.500
C : 5.500
F : 0.800

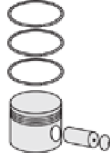




Motor Özellikleri
(Engine Specifications)



Piston Ölçüleri
(Piston Dimensions)



Piston Parça No
(Piston Part No)

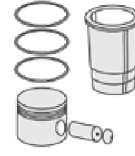


Segman Seti
(Ring Set)

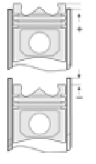


Silindir Gömleği
(Liner)

Dış Çap 1,50mm Farklı
(Outer Diameter
1,50mm Different)



Silindir Kit
(Assembly Set)



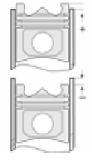
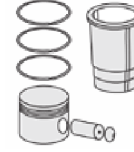
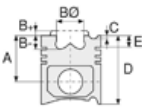
Piston - Blok Montaj
Yüksekliği
(Piston - Block
Assembly Height)





CUMMINS - Ø 102

87-73368-STD



Motor Özellikleri
(Engine Specifications)

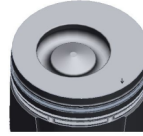
İmalatçı (Manufacturer):
Cummins
Çap (Diameter): 102
FM Grup No: 2116

B.160.10 EURO1
6 Sil. Dizel 5880cc
215/235 PS
Turbocharged
FATİH 180, PRO 518,
PRO 617
2002....

Piston Ölçüleri
(Piston Dimensions)

A : 71.620
B- : 20.700
BØ : 54.000
BX : 5.000
BY : 1.000
D : 105.400
E : 14.600

Pim: 40 x 83



Piston Özellikleri
(Piston Features)

Segman Taşıyıcı
(Ring Carrier)
Gözarası Konik
(Conical Eye Gap)

Piston Parça No
(Piston Part No)

87-155200-62
87-73368-STD
87-155207-62
87-73368-050

Segman Seti
(Ring Set)

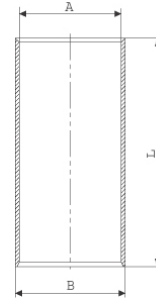
06-155200-10-STD
06-155205-10 0,25 mm
06-155207-10 0,50 mm

3.000 CRP KV1
2.350 P F14
4.000 CRP STD

Goetze® LKZ-Ring®

Silindir Gömleği
(Liner)

14-014530-00-D
B : 104.565
L : 200.000



14-014531-00-D
B : 105.065
L : 200.000

Dış Çap 0,50mm Farklı
(Outer Diameter
0,50mm Different)

14-014532-00-D
B : 105.565
L : 200.000

Dış Çap 1,00mm Farklı
(Outer Diameter
1,00mm Different)

14-047310-00-D
B : 106.070
L : 204.800
D : 109.000
C : 4.050
F : 0.800

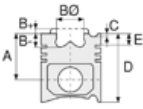
Silindir Kit
(Assembly Set)

Piston - Blok Montaj
Yüksekliği
(Piston - Block
Assembly Height)

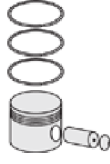




Motor Özellikleri
(Engine Specifications)



Piston Ölçüleri
(Piston Dimensions)



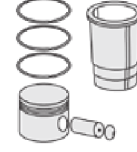
Piston Parça No
(Piston Part No)



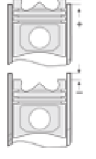
Segman Seti
(Ring Set)



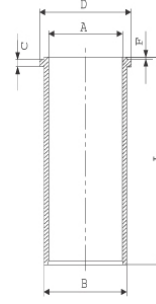
Silindir Gömleği
(Liner)



Silindir Kit
(Assembly Set)



Piston - Blok Montaj
Yüksekliği
(Piston - Block
Assembly Height)



14-047311-00-D
B : 106.570
L : 204.800
D : 109.500
C : 5.050
F : 0.800

Dış Çap 0,50mm Farklı
(Outer Diameter
0,50mm Different)

14-047312-00-D
B : 107.070
L : 204.800
D : 110.000
C : 5.050
F : 0.800

Dış Çap 1,00mm Farklı
(Outer Diameter
1,00mm Different)

14-047313-00-D
B : 107.570
L : 204.800
D : 110.500
C : 5.500
F : 0.800

Dış Çap 1,50mm Farklı
(Outer Diameter
1,50mm Different)





CUMMINS - Ø 102

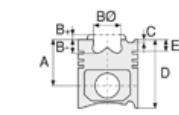
87-73373-STD



Motor Özellikleri
(Engine Specifications)

İmalatçı (Manufacturer):
Cummins
Çap (Diameter): 102
FM Grup No: 2126

ISF 3.8
4 Sil. Dizel 3759cc
123 KW-167 PS
Endüstriyel, İŞ MAKİNASI
(Industrial, Heavy
Machinery)



Piston Ölçüleri
(Piston Dimensions)

A : 73.900
B- : 18.000
BØ : 54.800
D : 108.900
E : 8.200

Pim: 40 x 82,7



Piston Özellikleri
(Piston Features)

Segman Taşıyıcı
(Ring Carrier)
Soğutma Kanallı
(Coolin Gallery)
Yağ Püskürtme Oyuğu
(Oil Jet Cut-out)
Gözarası Konik
(Conical Eye Gap)



Piston Parça No
(Piston Part No)

87-135200-42
87-73373-STD



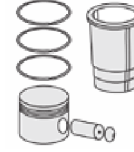
Segman Seti
(Ring Set)

06-135200-00-STD
06-135207-00 0,50 mm

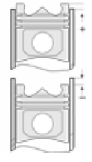
3.000  CKP KV1
2.350  P GOE
4.000  CR GOE



Silindir Gömleği
(Liner)



Silindir Kit
(Assembly Set)



Piston - Blok Montaj
Yüksekliği
(Piston - Block
Assembly Height)





CUMMINS - Ø 107

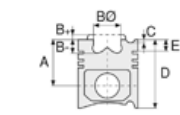
87-73375-STD



Motor Özellikleri
(Engine Specifications)

İmalatçı (Manufacturer):
Cummins
Çap (Diameter): 107
FM Grup No: 2122

QSB 6,7 - QSM 6,7
6 Sil. Dizel 6750cc
97-205Kw/132-279 Ps
İŞ MAKİNASI (Heavy
Machinery)
2007...



Piston Ölçüleri
(Piston Dimensions)

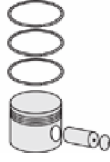
A : 69.400
B - : 12.800
BØ : 82.400
D : 103.300
E : 8.500

Pim: 40 x 90



Piston Özellikleri
(Piston Features)

Segman Taşıyıcı
(Ring Carrier)
Soğutma Kanallı
(Coolin Gallery)
Yağ Püskürtme Oyuğu
(Oil Jet Cut-out)
Gözarası Konik
(Conical Eye Gap)



Piston Parça No
(Piston Part No)

87-821000-22
87-73375-STD
87-821007-22
87-73375 0,50



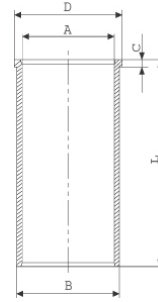
Segman Seti
(Ring Set)

06-821000-00-STD
06-821007-00 0,50 mm
3.000 CR KVI
2.500 CR KVI
3.500 CR GOE



Silindir Gömleği
(Liner)

14-022100-00-D
B : 110.000
L : 202.000
D : 111.500
C : 5.000

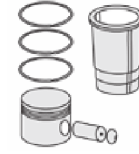


14-022101-00-D
B : 110.500
L : 202.000
D : 112.000
C : 5.500

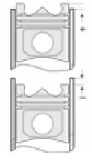
Dış Çap 0,50 mm Farklı
(Outer Diameter
0,50 mm Different)

14-022102-00-D
B : 111.000
L : 202.000
D : 112.500
C : 6.000

Dış Çap 1,00 mm Farklı
(Outer Diameter
1.00 mm Different)



Silindir Kit
(Assembly Set)



Piston - Blok Montaj
Yüksekliği
(Piston - Block
Assembly Height)

+0,28

+0,52





CUMMINS - Ø 107

87-73376-STD



Motor Özellikleri
(Engine Specifications)

İmalatçı (Manufacturer):
Cummins
Çap (Diameter): 107
FM Grup No: 2121

ISB EURO 4
6 Sil. Dizel 258-284
Kw/345-380 Hp
PRO 522, PRO 628,
PRO 827
2007...

Piston Ölçüleri
(Piston Dimensions)

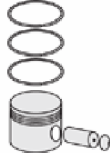
A : 69.400
B : 19.400
BØ : 59.000
D : 103.300
E : 8.200

Pim: 40 x 90



Piston Özellikleri
(Piston Features)

Segman Taşıyıcı
(Ring Carrier)
Soğutma Kanallı
(Coolin Gallery)
Yağ Püskürtme Oyuğu
(Oil Jet Cut-out)
Gözarası Konik
(Conical Eye Gap)



Piston Parça No
(Piston Part No)

87-821000-02
87-73376-STD
87-821007-00
87-73376 0,50



Segman Seti
(Ring Set)

06-821000-00-STD
06-821007-00 0,50 mm
3.000 CR KV1
2.500 CR KV1
3.500 CR GOE



Silindir Gömleği
(Liner)

14-022100-00-D
B : 110.000
L : 202.000
D : 111.500
C : 5.000

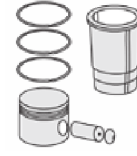


14-022101-00-D
B : 110.500
L : 202.000
D : 112.000
C : 5.500

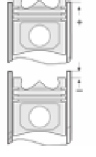
Dış Çap 0,50 mm Farklı
(Outer Diameter
0,50 mm Different)

14-022102-00-D
B : 111.000
L : 202.000
D : 112.500
C : 6.000

Dış Çap 1,00 mm Farklı
(Outer Diameter
1.00 mm Different)



Silindir Kit
(Assembly Set)



Piston - Blok Montaj
Yüksekliği
(Piston - Block
Assembly Height)

+0,28

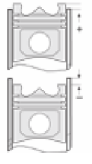
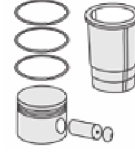
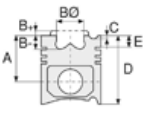
+0,52





CUMMINS - Ø 114

86-75012-STD



Motor Özellikleri
(Engine Specifications)

Piston Ölçüleri
(Piston Dimensions)

Piston Parça No
(Piston Part No)

Segman Seti
(Ring Set)

Silindir Gömleği
(Liner)

Silindir Kit
(Assembly Set)

Piston - Blok Montaj
Yüksekliği
(Piston - Block
Assembly Height)

İmalatçı (Manufacturer):
Cummins
Çap (Diameter): 114
FM Grup No: 2127

A : 74.250
B- : 14.750
BØ : 83.000
C1 : 1.050
D : 104.350
E : 8.430

86-75012-STD
86-75012-STD

3.500
3.000
4.050

ISL 8.3L
6 Sil. Dizel 380 HP

Pim: 45 x 91



Piston Özellikleri
(Piston Features)

Yağ Püskürtme Oyuğu
(Oil Jet Cut-out)
Gözarası Konik
(Conical Eye Gap)





CUMMINS - Ø 114

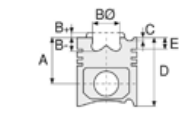
87-70416-STD



Motor Özellikleri
(Engine Specifications)

İmalatçı (Manufacturer):
Cummins
Çap (Diameter): 114
FM Grup No: 2106

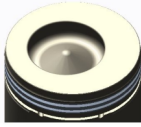
6CT 8,3
6 Sil. Dizel 8267cc
160 Kw (214PS) 17:1
214-17 BELDE OTOBUS
(Town Bus),
220-26 FATİH KAMYON
(Fatih Truck)



Piston Ölçüleri
(Piston Dimensions)

A : 78.820
B- : 21.800
BØ : 63.000
BX : 5.500
D : 120.320
E : 14.320

Pim: 45 x 91



Piston Özellikleri
(Piston Features)

Çift Segman Taşıyıcı
Gözarası Konik
(Double Ring Carrier
Conical Eye Gap)



Piston Parça No
(Piston Part No)

87-155600-02
87-70416-STD



Segman Seti
(Ring Set)

06-155600-10-STD

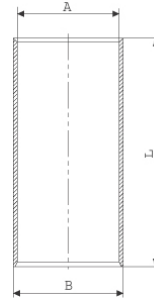
3.500 CRP KV1
3.000 P F14
4.000 CR STD

Goetze® LKZ-Ring®



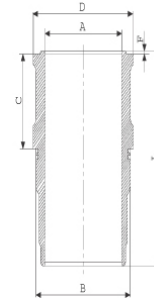
Silindir Gömleği
(Liner)

14-740010-00-WH
B : 125.685
L : 238.370
D : 130.948
C : 123.060
F : 1.250

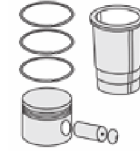


O-RİNG BİLGİ
(O-Ring Information)
50-350476-00/O
1x 120*124*4 FPM

14-746260-10-WH
B : 125.685
L : 238.370
D : 130.948
C : 123.060
F : 1.250

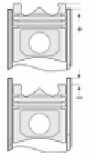


O-RİNG BİLGİ
(O-Ring Information)
50-350476-00/O
1x 120*124*4 FPM



Silindir Kit
(Assembly Set)

89-155600-32-STD
89-70416-STDC



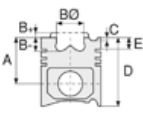
Piston - Blok Montaj
Yüksekliği
(Piston - Block
Assembly Height)

+0,33 / +0,66

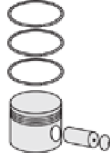




Motor Özellikleri
(Engine Specifications)



Piston Ölçüleri
(Piston Dimensions)



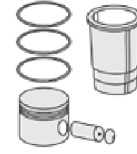
Piston Parça No
(Piston Part No)



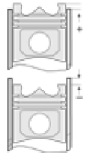
Segman Seti
(Ring Set)



Silindir Gömleği
(Liner)



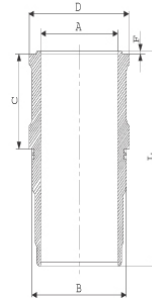
Silindir Kit
(Assembly Set)



Piston - Blok Montaj
Yüksekliği
(Piston - Block
Assembly Height)

14-745340-00-WH
B : 125.685
L : 238.350
D : 133.000
C : 123.050
F : 1.250

89-155600-02-STD
89-70416-STD



O-RİNG BİLGİ
(O-Ring Information)
50-350476-00/O
1x 120*124*4 FPM

14-740010-00-WH
O-RİNG BİLGİ
(O-Ring Information)
50-350476-00/O
1x 120*124*4 FPM

14-740030-00-WH
B : 125.685
L : 238.370
D : 131.200
C : 124.250
F : 1.250

C:1,20mm uzun
(1,20mm Long)

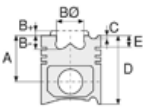
14-740050-00-WH
B : 125.685
L : 235.370
D : 131.200
C : 124.550
F : 1.250

C:1,50 mm uzun
(1,50mm Long)

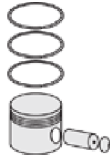




Motor Özellikleri
(Engine Specifications)



Piston Ölçüleri
(Piston Dimensions)



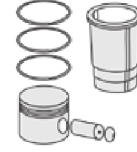
Piston Parça No
(Piston Part No)



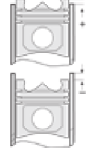
Segman Seti
(Ring Set)



Silindir Gömleği
(Liner)



Silindir Kit
(Assembly Set)

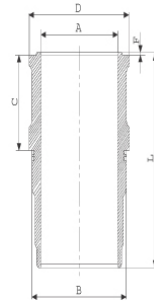


Piston - Blok Montaj
Yüksekliği
(Piston - Block
Assembly Height)

14-745340-00-WH
O-RİNG BİLGİ
(O-Ring Information)
50-350476-00/O
1x 120*124*4 FPM

14-746260-10-WH
O-RİNG BİLGİ
(O-Ring Information)
50-350476-00/O
1x 120*124*4 FPM

14-749630-00-WH
B : 125.685
L : 235.370
D : 130.948
C : 123.039
F : 1.250



O-RİNG BİLGİ
(O-Ring Information)
50-35047-60/O
1x 120*124*4 FPM

14-749632-00-WH
B : 125.685
L : 235.370
D : 130.948
C : 124.550
F : 1.250

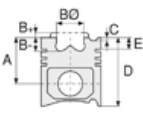
C : 1,50 mm uzun
(1,50mm Long)

14-749633-00-WH
B : 125.685
L : 235.370
D : 130.948
C : 126.050
F : 1.250

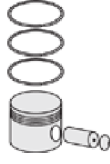




Motor Özellikleri
(Engine Specifications)



Piston Ölçüleri
(Piston Dimensions)



Piston Parça No
(Piston Part No)



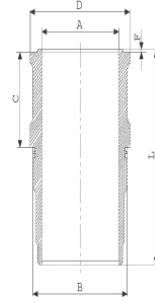
Segman Seti
(Ring Set)



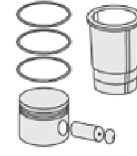
Silindir Gömleği
(Liner)

C: 3,00 mm uzun
(3,00mm Long)

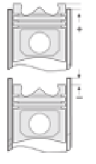
14-749640-00-WH
B: 125.685
L: 235.370
D: 131.200
C: 124.250
F: 1.250



C:1,20 mm uzun
(1,20mm Long)

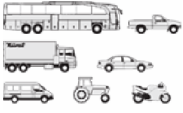


Silindir Kit
(Assembly Set)



Piston - Blok Montaj
Yüksekliği
(Piston - Block
Assembly Height)

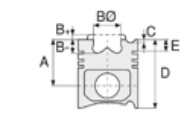




Motor Özellikleri
(Engine Specifications)

İmalatçı (Manufacturer):
Cummins
Çap (Diameter): 114
FM Grup No: 2107

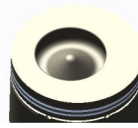
6CTAA 8,3
6 Sil. Dizel 8267cc
194 Kw (263PS) 16:1
2626 FORD CARGO
KAMYON (Ford Cargo
Truck), 270-26
FATİH KAMYON
(Fatih Truck)



Piston Ölçüleri
(Piston Dimensions)

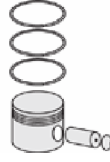
A : 78.820
B- : 25.430
BØ : 60.000
BX : 5.500
D : 120.320
E : 14.320

Pim: 45 x 91,1



Piston Özellikleri
(Piston Features)

Çift Segman Taşıyıcı
Gözarası Konik
(Double Ring Carrier
Conical Eye Gap)



Piston Parça No
(Piston Part No)

87-155600-22
87-70419-STD



Segman Seti
(Ring Set)

06-155600-10-STD

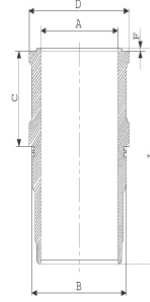
3.500 CRP KV1
3.000 P F14
4.000 CR STD

Goetze® LKZ-Ring®

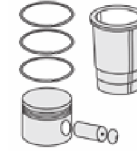


Silindir Gömleği
(Liner)

14-746260-10-WH
B : 125.685
L : 238.370
D : 130.948
C : 123.060
F : 1.250

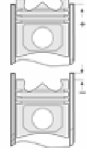


O-RİNG BİLGİ
50-350476-00/0
1x 120*124*4 FPM



Silindir Kit
(Assembly Set)

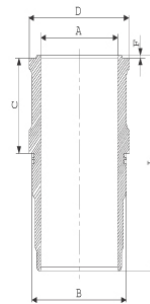
89-155600-82-STD
89-70419-STD



Piston - Blok Montaj
Yüksekliği
(Piston - Block
Assembly Height)

+0,20 / +0,50

14-745340-00-WH
B : 125.685
L : 238.350
D : 133.000
C : 123.050
F : 1.250



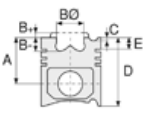
O-RİNG BİLGİ
50-350476-00/0
1x 120*124*4 FPM

89-155600-62-STD
89-70419-STD

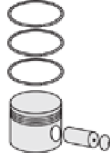




Motor Özellikleri
(Engine Specifications)



Piston Ölçüleri
(Piston Dimensions)



Piston Parça No
(Piston Part No)

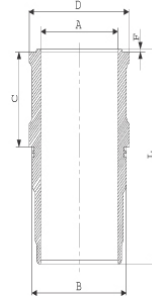


Segman Seti
(Ring Set)



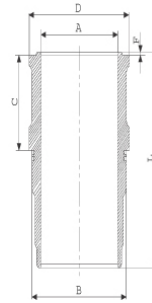
Silindir Gömleği
(Liner)

14-740010-00-WH
B: 125.685
L: 238.370
D: 130.948
C: 123.060
F: 1.250

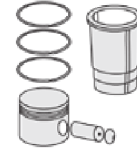


O-RİNG BİLGİ
50-350476-00/0
1x 120*124*4 FPM

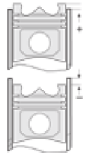
14-740020-00-WH
B: 125.685
L: 235.370
D: 130.948
C: 123.039
F: 1.250



3,00mm Kısa (3,00mm
Short)



Silindir Kit
(Assembly Set)

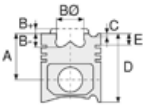


Piston - Blok Montaj
Yüksekliği
(Piston - Block
Assembly Height)





Motor Özellikleri
(Engine Specifications)



Piston Ölçüleri
(Piston Dimensions)



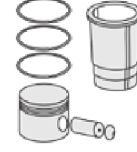
Piston Parça No
(Piston Part No)



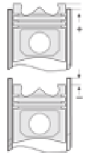
Segman Seti
(Ring Set)



Silindir Gömleği
(Liner)



Silindir Kit
(Assembly Set)

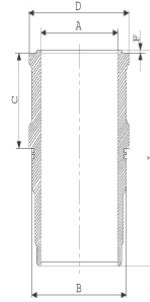


Piston - Blok Montaj
Yüksekliği
(Piston - Block
Assembly Height)

14-740030-00-WH
B : 125.685
L : 238.370
D : 131.200
C : 124.250
F : 1.250

C:1,20mm Uzun
(1,20mm Long)

14-740040-00-WH
B : 125.685
L : 235.370
D : 131.200
C : 124.250
F : 1.250



C:1,20mm Uzun
(1,20mm Long)

14-740050-00-WH
B : 125.685
L : 235.370
D : 131.200
C : 124.550
F : 1.250

C:1,50 mm uzun
(1,50mm Long)



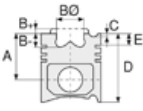


CUMMINS - Ø 114

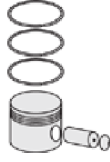
87-70419-STD



Motor Özellikleri
(Engine Specifications)



Piston Ölçüleri
(Piston Dimensions)



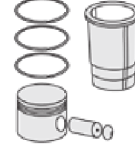
Piston Parça No
(Piston Part No)



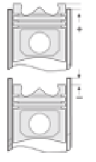
Segman Seti
(Ring Set)



Silindir Gömleği
(Liner)



Silindir Kit
(Assembly Set)

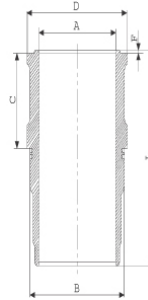


Piston - Blok Montaj
Yüksekliği
(Piston - Block
Assembly Height)

114-740080-00-WH
B : 125.685
L : 235.370
D : 131.200
C : 124.550
F : 1.250

C:1,50 mm uzun

14-749630-00-WH
B : 125.685
L : 235.370
D : 130.948
C : 123.039
F : 1.250



O-RING Bilgi
50-35047-60/O
1x 120*124*4 FPM

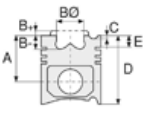
14-749632-00-WH
B : 125.685
L : 235.370
D : 130.948
C : 124.550
F : 1.250

C: 1,50 mm uzun
(1,50mm Long)

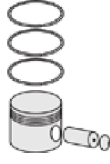




Motor Özellikleri
(Engine Specifications)



Piston Ölçüleri
(Piston Dimensions)



Piston Parça No
(Piston Part No)



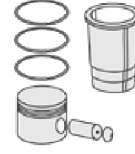
Segman Seti
(Ring Set)



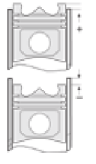
Silindir Gömleği
(Liner)

14-749633-00-WH
B : 125.685
L : 235.370
D : 130.948
C : 126.050
F : 1.250

C : 3,00 mm uzun
(1,20mm Long)



Silindir Kit
(Assembly Set)



Piston - Blok Montaj
Yüksekliği
(Piston - Block
Assembly Height)

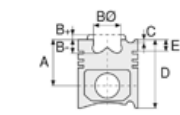




Motor Özellikleri
(Engine Specifications)

İmalatçı (Manufacturer):
Cummins
Çap (Diameter): 114
FM Grup No: 2108

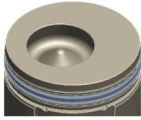
6CTAA EURO1
6 Sil. Dizel 8298cc
160 Kw (214PS) 18:1
PRO 822



Piston Ölçüleri
(Piston Dimensions)

A : 79.020
B- : 25.000
BØ : 55.950
BX : 10.500
BY : 2.500
D : 120.520
E : 14.520

Pim: 45 x 91,1



Piston Özellikleri
(Piston Features)

Sert Anotlama
(Hard Anodizing)
Çift Segman Taşıyıcı
Gözarası Konik
(Double Ring Carrier
Conical Eye Gap)



Piston Parça No
(Piston Part No)

87-155600-42
87-70427-STD

87-155600-43
87-70427-STD1
0,20mm Kısa (Short)

87-155600-44
87-70427-STD2
0,40mm Kısa (Short)



Segman Seti
(Ring Set)

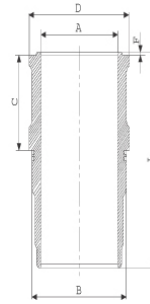
06-155600-10-STD

3.500 CRP KV1
3.000 P F14
4.000 CR STD
Goetze® LKZ-Ring®



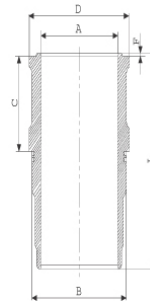
Silindir Gömleği
(Liner)

14-749630-00-WH
B : 125.685
L : 235.370
D : 130.948
C : 123.039
F : 1.250

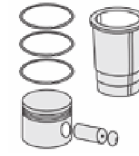


O-RING BİLGİ
(O-Ring Information)
50-35047-60/O
1x 120*124*4 FPM

14-740020-00-WH
B : 125.685
L : 235.370
D : 130.948
C : 123.039
F : 1.250

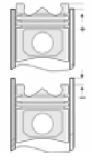


3,00mm Kısa (Short)



Silindir Kit
(Assembly Set)

89-155600-32-STD
89-70416-STD



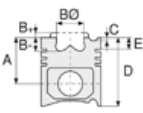
Piston - Blok Montaj
Yüksekliği
(Piston - Block
Assembly Height)

+0,33 / +0,66

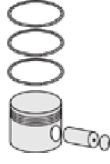




Motor Özellikleri
(Engine Specifications)



Piston Ölçüleri
(Piston Dimensions)



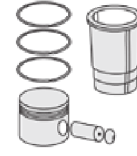
Piston Parça No
(Piston Part No)



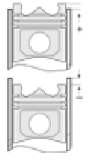
Segman Seti
(Ring Set)



Silindir Gömleği
(Liner)

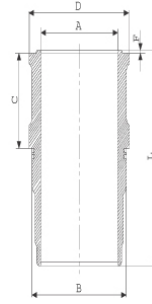


Silindir Kit
(Assembly Set)



Piston - Blok Montaj
Yüksekliği
(Piston - Block
Assembly Height)

14-740040-00-WH
B : 125.685
L : 235.370
D : 131.200
C : 124.250
F : 1.250



C:1,20mm Uzun (Long)

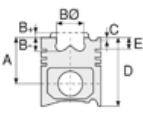
14-740080-00-WH
B : 125.685
L : 235.370
D : 131.200
C : 124.550
F : 1.250

C:1,50 mm Uzun (Long)

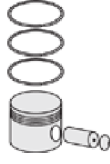




Motor Özellikleri
(Engine Specifications)



Piston Ölçüleri
(Piston Dimensions)



Piston Parça No
(Piston Part No)

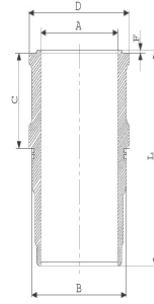


Segman Seti
(Ring Set)

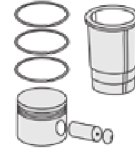


Silindir Gömleği
(Liner)

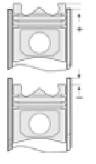
14-749640-00-WH
B : 125.685
L : 235.370
D : 131.200
C : 124.250
F : 1.250



C:1,20 mm Uzun (Long)



Silindir Kit
(Assembly Set)



Piston - Blok Montaj
Yüksekliği
(Piston - Block
Assembly Height)

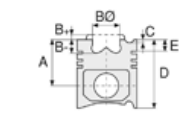


Motor Özellikleri
(Engine Specifications)

İmalatçı (Manufacturer):
Cummins - Ford
Çap (Diameter): 114
FM Grup No: 2109

6CTAA EURO1
6 Sil. Dizel 8298cc
160 Kw (214PS) 17,3:1
PRO 827

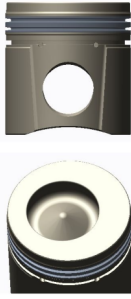
Cummins ile Ford ortak
motor
(Common and Ford
Engine With
Cummins)
32X26 Cargo



Piston Ölçüleri
(Piston Dimensions)

A : 79.020
B- : 21.000
BØ : 65.310
BX : 5.500
D : 120.520
E : 14.520

Pim: 45 x 91,1



Piston Özellikleri
(Piston Features)

Çift Segman Taşıyıcı
Gözarası Konik
(Double Ring Carrier
Conical Eye Gap)



Piston Parça No
(Piston Part No)

87-155600-62
87-70428-STD
87-155600-63
87-70428-STD1
0,20mm Kısa (Short)
87-155600-64
87-70428-STD2
0,40 mm Kısa (Short)



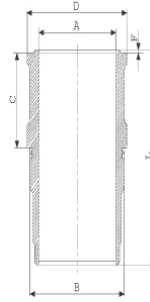
Segman Seti
(Ring Set)

06-155600-10-STD
3.500 CRP KV1
3.000 P F14
4.000 CR STD
Goetze® LKZ-Ring®



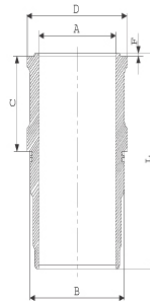
Silindir Gömleği
(Liner)

14-749630-00-WH
B : 125.685
L : 235.370
D : 130.948
C : 123.039
F : 1.250

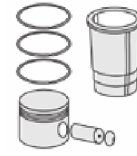


O-RING BİLGİ
(O-Ring Information)
50-35047-60/O
1x 120*124*4 FP

14-740020-00-WH
B : 125.685
L : 235.370
D : 130.948
C : 123.039
F : 1.250

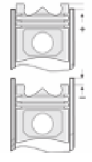


3,00mm Kısa (Short)



Silindir Kit
(Assembly Set)

89-155600-72-STD
89-70428-STD



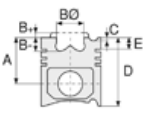
Piston - Blok Montaj
Yüksekliği
(Piston - Block
Assembly Height)

+0,20 / +0,50

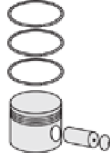




Motor Özellikleri
(Engine Specifications)



Piston Ölçüleri
(Piston Dimensions)



Piston Parça No
(Piston Part No)

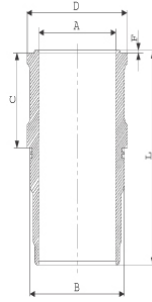


Segman Seti
(Ring Set)

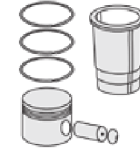


Silindir Gömleği
(Liner)

14-740040-00-WH
B : 125.685
L : 235.370
D : 131.200
C : 124.250
F : 1.250

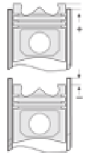


C:1,20mm Uzun (Long)



Silindir Kit
(Assembly Set)

89-155600-04-STD
89-70428-STD B



Piston - Blok Montaj
Yüksekliği
(Piston - Block
Assembly Height)

14-740020-00-WH
3,00mm Kısa (Short)

14-740040-00-WH
C:1,20mm Uzun (Long)

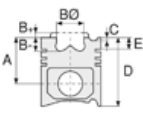
14-740080-00-WH
B : 125.685
L : 235.370
D : 131.200
C : 124.550
F : 1.250

C:1,50 mm Uzun (Long)

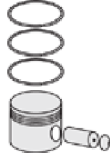




Motor Özellikleri
(Engine Specifications)



Piston Ölçüleri
(Piston Dimensions)



Piston Parça No
(Piston Part No)

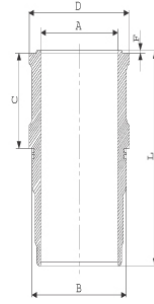


Segman Seti
(Ring Set)

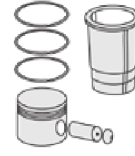


Silindir Gömleği
(Liner)

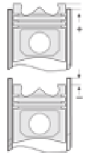
14-749640-00-WH
B: 125.685
L: 235.370
D: 131.200
C: 124.250
F: 1.250



C:1,20mm Uzun (Long)

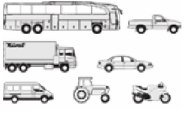


Silindir Kit
(Assembly Set)



Piston - Blok Montaj
Yüksekliği
(Piston - Block
Assembly Height)





Motor Özellikleri
(Engine Specifications)

İmalatçı (Manufacturer):
Cummins
Çap (Diameter): 114
FM Grup No: 2115

C.260.21 EURO2
6 Sil. Dizel 8268cc
260 SERİSİ OTOBÜSLER
- 2002

Piston Ölçüleri
(Piston Dimensions)

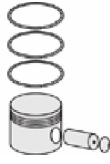
A : 74.300
B - : 22.000
BØ : 80.300
C1 : 1.000
D : 110.400
E : 10.800

Pim: 45 x 91



Piston Özellikleri
(Piston Features)

Segman Taşıyıcı
(Ring Carrier)
Soğutma Kanallı
(Coolin Gallery)
Yağ Püskürtme Oyuğu
(Oil Jet Cut-out)
Gözarası Konik
(Conical Eye Gap)



Piston Parça No
(Piston Part No)

87-820800-02
87-73380-STD



Segman Seti
(Ring Set)

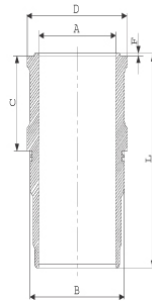
06-820800-20-STD
3.500 CR KV1
3.000 P F14
4.000 CR GOE

Goetze® LKZ-Ring®



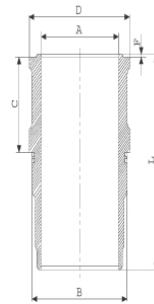
Silindir Gömleği
(Liner)

14-749630-00 WH
B : 125.685
L : 235.370
D : 130.948
C : 123.039
F : 1.250

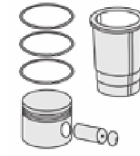


O-RING BİLGİ(O-Ring
Information)
50-35047-60/0
1x 120*124*4 FPM

14-749640-00 WH
B : 125.685
L : 235.370
D : 131.200
C : 124.250
F : 1.250

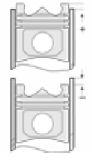


C:1,20 mm Uzun
(C:1,20 mm Long)



Silindir Kit
(Assembly Set)

89-820800-02-STD
89-73380-STD



Piston - Blok Montaj
Yüksekliği
(Piston - Block
Assembly Height)

1,70 mm conta
(Notch) +0,15 / +0,48





CUMMINS - Ø 114

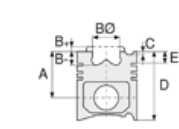
87-73383-STD



Motor Özellikleri
(Engine Specifications)

İmalatçı (Manufacturer):
Cummins
Çap (Diameter): 114
FM Grup No: 2128

QSC 8.3
6 Sil. Dizel
365-447 KW-490-600
HP
320LC-7, CLG 862 III,
CLG 936LC, İŞ MAKİNASI
(Heavy Machinery),
R320LC-9, WA430-6



Piston Ölçüleri
(Piston Dimensions)

A : 79.000
B- : 14.500
BØ : 80.700
D : 115.700
E : 11.200

Pim: 45 x 91



Piston Özellikleri
(Piston Features)

Çift Segman Taşıyıcı
Gözarası Konik
(Double Ring Carrier
Conical Eye Gap)



Piston Parça No
(Piston Part No)

87-819600-22
87-73383-STD



Segman Seti
(Ring Set)

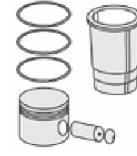
06-819600-00-STD

3.500 CRP KV1
3.000 P F14
4.000 CRP STD

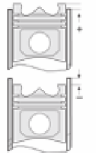
Goetze® LKZ-Ring®



Silindir Gömleği
(Liner)



Silindir Kit
(Assembly Set)



Piston - Blok Montaj
Yüksekliği
(Piston - Block
Assembly Height)

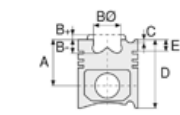




Motor Özellikleri
(Engine Specifications)

İmalatçı (Manufacturer):
Cummins
Çap (Diameter): 114
FM Grup No: 2118

ISLe375 20 Euro2
6 Sil. Dizel 8900cc
276 Kw (375 Ps) 16,6:1
Dongfeng 375, PRO 935



Piston Ölçüleri
(Piston Dimensions)

A : 74.300
B- : 22.300
BØ : 67.700
C1 : 1.000
D : 105.400
E : 8.500

Pim: 45 x 91



Piston Özellikleri
(Piston Features)

Yağ Püskürtme Oyuğu
(Oil Jet Cut-out)
Gözarası Konik
(Conical Eye Gap)



Piston Parça No
(Piston Part No)

87-819600-02
87-75006-STD



Segman Seti
(Ring Set)

06-819600-00-STD

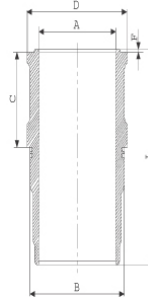
3.500 CRP KV1
3.000 P F14
4.000 CRP STD

Goetze® LKZ-Ring®



Silindir Gömleği
(Liner)

14-022100-00-D
B : 110.000
L : 202.000
D : 111.500
C : 5.000



O-RING BİLGİ
(O-Ring Information)
50-35047-60/O
1x 120*124*4 FPM

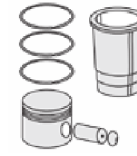
14-749630-00-WH
O-RING BİLGİ
(O-Ring Information)
50-35047-60/O
1x 120*124*4 FPM

14-749632-00-WH
B : 125.685
L : 235.370
D : 130.948
C : 124.550
F : 1.250

C: 1,50 mm Uzun (Long)

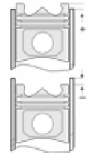
14-749633-00-WH
B : 125.685
L : 235.370
D : 130.948
C : 126.050
F : 1.250

C: 3,00 mm Uzun (Long)



Silindir Kit
(Assembly Set)

89-819600-02-STD
89-75006 STD



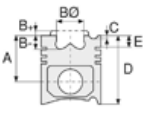
Piston - Blok Montaj
Yüksekliği
(Piston - Block
Assembly Height)

+0,15/+0,48

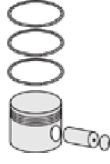




Motor Özellikleri
(Engine Specifications)



Piston Ölçüleri
(Piston Dimensions)



Piston Parça No
(Piston Part No)

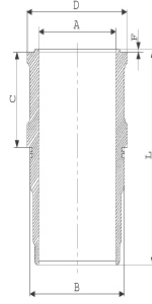


Segman Seti
(Ring Set)

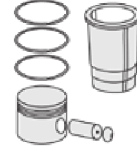


Silindir Gömleği
(Liner)

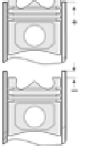
14-749640-00-WH
B : 125.685
L : 235.370
D : 131.200
C : 124.250
F : 1.250



C:1,20 mm Uzun (Long)



Silindir Kit
(Assembly Set)



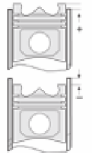
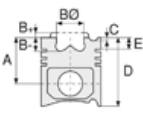
Piston - Blok Montaj
Yüksekliği
(Piston - Block
Assembly Height)





CUMMINS - Ø 114,02

86-75011-STD



Motor Özellikleri
(Engine Specifications)

İmalatçı (Manufacturer):
Cummins
Çap (Diameter): 114,02
FM Grup No: 2127

QSL 8.3L
6 Sil. Dizel

Piston Ölçüleri
(Piston Dimensions)

A : 74.250
B- : 22.250
BØ : 65.020
C1 : 1.050
D : 104.350
E : 8.430

Pim: 45 x 91



Piston Özellikleri
(Piston Features)

Yağ Püskürtme Oyuğu
(Oil Jet Cut-out)
Gözarası Konik
(Conical Eye Gap)

Piston Parça No
(Piston Part No)

86-75011-STD
86-75011-STD

Segman Seti
(Ring Set)

3.500
3.000
4.050

Silindir Gömleği
(Liner)

Silindir Kit
(Assembly Set)

Piston - Blok Montaj
Yüksekliği
(Piston - Block
Assembly Height)





CUMMINS - Ø 125

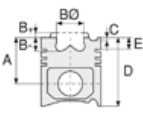
14-740120-00-WH



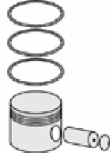
Motor Özellikleri
(Engine Specifications)

İmalatçı (Manufacturer):
Cummins
Çap (Diameter): 125
FM Grup No: 2131

L10
6 Sil. Dizel
224 KW-300 HP 16.0:1
Turbocharged
Samsung (Loder)



Piston Ölçüleri
(Piston Dimensions)



Piston Parça No
(Piston Part No)

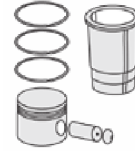
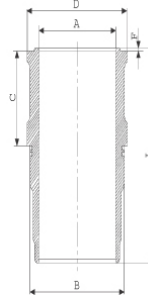


Segman Seti
(Ring Set)

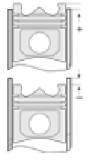


Silindir Gömleği
(Liner)

14-740120-00-WH
B : 137.750
L : 239.780
D : 145.970
C : 100.050
F : 1.290



Silindir Kit
(Assembly Set)



Piston - Blok Montaj
Yüksekliği
(Piston - Block
Assembly Height)



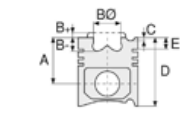


Motor Özellikleri
(Engine Specifications)

İmalatçı (Manufacturer):
Cummins
Çap (Diameter): 125
FM Grup No: 2119

ISM 410 E20 EURO 3
ISM-M11

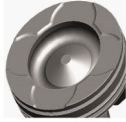
6 Sil. Dizel 10800cc
300 Kw-410 ps
ISM CM 876E,
ISM CM 875, ISM CM 876,
PRO 1142 EURO 3,
QSMII CM 876
2007...



Piston Ölçüleri
(Piston Dimensions)

A : 75.350
B - : 20.000
BØ : 78.300
C1 : 1.400
C2 : 1.400
D : 113.050
E : 6.000

Pim: 54 x 102



Piston Özellikleri
(Piston Features)

Gözarası Konik
(Conical Eye Gap)



Piston Parça No
(Piston Part No)

87-820900-02
87-75009-STD
Çift parçalı piston
(Articulated Piston)



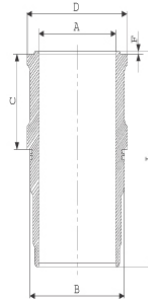
Segman Seti
(Ring Set)

06-820900-20-STD
3.150 CR KV1
3.150 CR KV1
4.000 NT ST

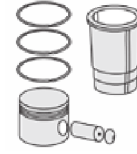


Silindir Gömleği
(Liner)

14-740090-00-WH
B : 137.750
L : 240.000
D : 145.957
C : 15.000
F : 1.250

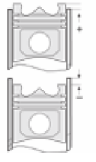


O-RING BİLGİ
(O-Ring Information)
50-35048-50/O
132,5*137*3,50 EPDM



Silindir Kit
(Assembly Set)

89-820900-02-STD
89-75009-STD



Piston - Blok Montaj
Yüksekliği
(Piston - Block
Assembly Height)

1.80 mm conta(Notch)
+0,05/+0,30
2,00 mm conta(Notch)
+0,15/+0,45

