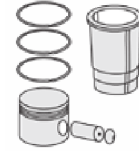




FORD LKW - Ø 80

87-72760-STD



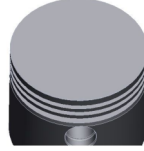
Motor Özellikleri
(Engine Specifications)

İmalatçı (Manufacturer):
FORD LKW
Çap (Diameter): Ø 94
FM Grup No: 3115

NHDD KOMPRESÖR
1 Sil. Dizel
2524 NHDD
KOMPRESÖR
(COMPRESSOR)

Piston Ölçüleri
(Piston Dimensions)

A : 31.080
D : 64.000
E : 4.500
Pim: 18 x 63



Piston Özellikleri
(Piston Features)

Gözarası Düz
(Flat Eye Gap)

Piston Parça No
(Piston Part No)

87-838000-02
87-72760-STD
87-838007-02
87-72760-050

Segman Seti
(Ring Set)

06-838000-00-STD
06-838007-00 0,50 mm
06-838009-00 0,75 mm
06-838011-00 1,00 mm

2.500  P F14
2.500  P F14
4.000  P STD

Silindir Gömleği
(Liner)

Silindir Kit
(Assembly Set)

Piston - Blok Montaj
Yüksekliği
(Piston - Block
Assembly Height)





FORD LKW - Ø 85,725

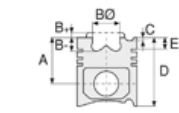
87-70832-STD



Motor Özellikleri
(Engine Specifications)

İmalatçı (Manufacturer):
FORD LKW
Çap (Diameter): Ø 85,725
FM Grup No: 3019

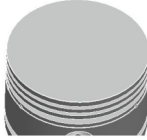
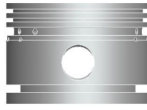
D1211 KOMP.
1 Sil. Dizel



Piston Ölçüleri
(Piston Dimensions)

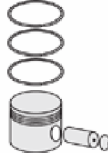
A : 36.500
D : 61.900
E : 4.000

Pim: 19,05 x 74,7



Piston Özellikleri
(Piston Features)

Gözarası Düz
(Flat Eye Gap)



Piston Parça No
(Piston Part No)

87-075760-02
87-70832-STD

87-075767-02
87-70832 0,50



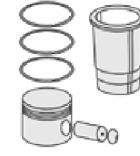
Segman Seti
(Ring Set)

06-075760-00-STD
06-075767-00 0,50 mm

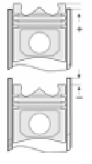
2.385 P STD
2.385 P STD
4.762 P STD
4.762 P STD



Silindir Gömleği
(Liner)



Silindir Kit
(Assembly Set)



Piston - Blok Montaj
Yüksekliği
(Piston - Block
Assembly Height)

87-075760-22
87-70832-STD A

87-075767-22
87-70832 0,50 A

06-075760-10-STD
06-075767-10 0,50 mm

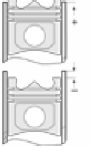
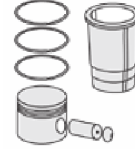
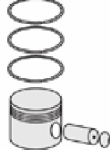
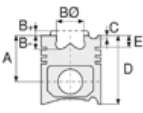
2.385 P STD
2.385 P STD
4.762 P STD
4.762 P STD





FORD LKW - Ø 92

87-72761-STD



Motor Özellikleri
(Engine Specifications)

İmalatçı (Manufacturer):
FORD LKW
Çap (Diameter): Ø 92
FM Grup No: 3114

NHDD

1 Sil. Dizel
Man ile ortak motor
3230 HAVA KOMP.
(Common Engine With
Man)

Piston Ölçüleri
(Piston Dimensions)

A : 31.060
D : 68.100
E : 4.000
Pim: 18 x 63



Piston Özellikleri
(Piston Features)

Gözarası Düz
(Flat Eye Gap)

Piston Parça No
(Piston Part No)

87-837300-02
87-72761-STD
87-837305-02
87-72761-0,25
87-837307-02
87-72761-050

Segman Seti
(Ring Set)

06-837300-00-STD
06-837305-00 0,25 mm
06-837307-00 0,50 mm
06-837309-00 0,75 mm
06-837311-00 1,00 mm

2.500 P F14
2.500 P F14
4.000 P STD

Silindir Gömleği
(Liner)

Silindir Kit
(Assembly Set)

Piston - Blok Montaj
Yüksekliği
(Piston - Block
Assembly Height)





FORD LKW - Ø 104,77

87-70839-STD A



Motor Özellikleri
(Engine Specifications)

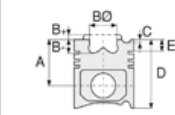
İmalatçı (Manufacturer):
FORD LKW
Çap (Diameter): Ø 104,77
FM Grup No: 3046

2701E, 2706E DORSET

4 Sil. Dizel 2400cc
61 Kw (83 PS)
2700-D, 2701 E-ET,
2704, 2706 E, 2709 E,
D 1210, D 300, D 750
1965 - 1969

2704E, 2709E DORSET

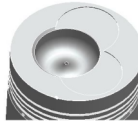
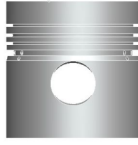
6 Sil. Dizel 3600cc
95,5 Kw (130 PS)
2700-D, 2701 E-ET,
2704, 2706 E, 2709 E,
D 1210, D 300, D 750
1965 - 1969



Piston Ölçüleri
(Piston Dimensions)

A : 71.000
B- : 25.800
BØ : 51.500
BX : 7.400
C1 : 1.800
D : 118.000
E : 20.000

Pim: 34,925 x 90



Piston Özellikleri
(Piston Features)

Gözarası Düz
(Flat Eye Gap)



Piston Parça No
(Piston Part No)

87-835500-02
87-70839-STD A
87-835506-02
87-70839 015A
87-835510-02
87-70839 035A

87-838100-02
87-70839-STD B

87-838106-02
87-70839 015B

87-838110-02
87-70839 035B



Segman Seti
(Ring Set)

06-835500-10-STD
06-835506-10 0,015"
06-835510-10 0,035"

2.385 CRP KV1
2.385 CR IKA
2.385 P STD
4.747 CRP STD

06-838100-10-STD
06-838106-10 0,015"
06-838110-10 0,035"

2.385 CRP KV1
2.385 CRP STD
2.385 P STD
4.747 CRP STD



Silindir Gömleği
(Liner)

14-025810-00-D
B : 108.950
L : 218.500
D : 110.000
C : 7.000

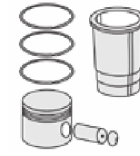


14-025811-00-D
B : 109.450
L : 218.500
D : 110.500
C : 7.000

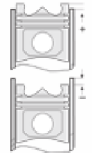
Dış Çap 0,50mm Farklı
(Outer Diameter
0,50 mm Different)

14-025812-00-D
B : 109.950
L : 218.500
D : 111.000
C : 7.000

Dış Çap 1,00mm Farklı
(Outer Diameter
1,00 mm Different)



Silindir Kit
(Assembly Set)



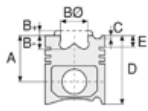
Piston - Blok Montaj
Yüksekliği
(Piston - Block
Assembly Height)

- 0,15 / + 0,40

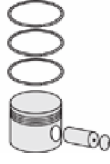




Motor Özellikleri
(Engine Specifications)



Piston Ölçüleri
(Piston Dimensions)



Piston Parça No
(Piston Part No)



Segman Seti
(Ring Set)



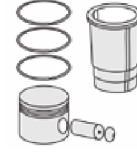
Silindir Gömleği
(Liner)

14-025813-00-D
B : 110.450
L : 218.500
D : 111.500
C : 7.000

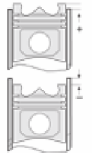
Dış Çap 1,50mm Farklı
(Outer Diameter
1,50 mm Different)

14-025814-00-D
B : 110.950
L : 218.500
D : 112.000
C : 7.000

Dış Çap 2,00mm Farklı
(Outer Diameter
2,00 mm Different)



Silindir Kit
(Assembly Set)



Piston - Blok Montaj
Yüksekliği
(Piston - Block
Assembly Height)

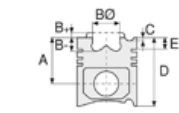




Motor Özellikleri
(Engine Specifications)

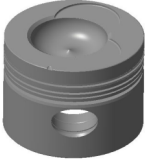
İmalatçı (Manufacturer):
FORD LKW
Çap (Diameter): Ø 104,77
FM Grup No: 3053

6D
6 Sil. Dizel 5945cc
81 Kw (110 PS) 16:1
D 1210 KAMYON



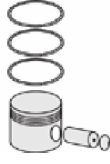
Piston Ölçüleri
(Piston Dimensions)

A : 71.250
B - : 23.000
BØ : 57.500
BX : 3.700
C1 : 2.600
D : 119.900
E : 20.000
Pim: 34,925 x 90



Piston Özellikleri
(Piston Features)

Segman Taşıyıcı
(Ring Carrier)
Çelik Plaka
(Steel Strut)
Gözarası Düz
(Flat Eye Gap)



Piston Parça No
(Piston Part No)

87-835500-22
87-70878-STD A
87-835506-22
87-70878 015A
87-835510-22
87-70878 035A

87-838100-22
87-70878-STD B
87-838106-22
87-70878 015B
87-838110-22
87-70878 035B



Segman Seti
(Ring Set)

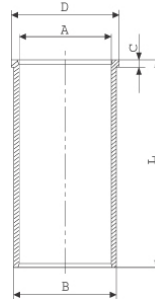
06-835500-10-STD
06-835506-10 0,015"
06-835510-10 0,035"
2.385 CRP KV1
2.385 CR STD
2.385 P STD
4.747 CRP STD

06-838100-10-STD
06-838106-10 0,015"
06-838110-10 0,035"
2.385 CRP KV1
2.385 CRP STD
2.385 P STD
4.747 CRP STD



Silindir Gömleği
(Liner)

14-025810-00-D
B : 108.950
L : 218.500
D : 110.000
C : 7.000

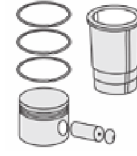


14-025811-00-D
B : 109.450
L : 218.500
D : 110.500
C : 7.000
Dış Çap 0,50mm Farklı
(Outside Diameter
0,50 mm Different)

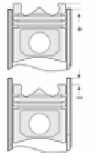
14-025812-00-D
B : 109.950
L : 218.500
D : 111.000
C : 7.000
Dış Çap 1,00mm Farklı
(Outside Diameter
0,50 mm Different)

14-025813-00-D
B : 110.450
L : 218.500
D : 111.500
C : 7.000
Dış Çap 1,50mm Farklı
(Outside Diameter
1,50 mm different)

14-025814-00-D
B : 110.950
L : 218.500
D : 112.000
C : 7.000
Dış Çap 2,00mm Farklı
(Outside Diameter
2,00 mm Different)



Silindir Kit
(Assembly Set)



Piston - Blok Montaj
Yüksekliği
(Piston - Block
Assembly Height)

- 0,150 / + 0,40





FORD LKW - Ø 104,77

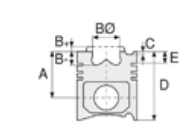
87-70880-STD A



Motor Özellikleri
(Engine Specifications)

İmalatçı (Manufacturer):
FORD LKW
Çap (Diameter): Ø 104,77
FM Grup No: 3048

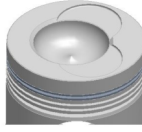
363 DOVER II
6 Sil. Dizel 5950cc
81 Kw (110 PS) 16:1
CARGO 0711,
CARGO 0811,
CARGO 0911,
OTOSAN İMALATI
D1211 KAMYONLAR
1981....



Piston Ölçüleri
(Piston Dimensions)

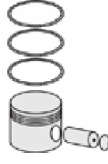
A : 71.250
B - : 23.000
BØ : 57.500
BX : 3.700
C1 : 2.300
D : 119.900
E : 20.000

Pim: 36,505 x 86,2



Piston Özellikleri
(Piston Features)

Segman Taşıyıcı
(Ring Carrier)
Çelik Plaka
(Steel Strut)
Gözarası Düz
(Flat Eye Gap)



Piston Parça No
(Piston Part No)

87-835500-42
87-70880-STD A

87-835506-42
87-70880 015A

87-835510-42
87-70880 035A

87-838100-42
87-70880-STD B

87-838106-42
87-70880 015B

87-838110-42
87-70880 035B



Segman Seti
(Ring Set)

06-835500-10-STD
06-835506-10 0,015"
06-835510-10 0,035"

2.385 CRP KV1
2.385 CR STD
2.385 P STD
4.747 CRP STD

06-838100-10-STD
06-838106-10 0,015"
06-838110-10 0,035"

2.385 CRP KV1
2.385 CRP STD
2.385 P STD
4.747 CRP STD



Silindir Gömleği
(Liner)

14-025810-00-D
B : 108.950
L : 218.500
D : 110.000
C : 7.000

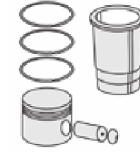


14-025811-00-D
B : 109.450
L : 218.500
D : 110.500
C : 7.000
Dış Çap 0,50mm Farklı
(Outside Diameter
0,50 mm Different)

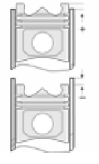
14-025812-00-D
B : 109.950
L : 218.500
D : 111.000
C : 7.000
Dış Çap 1,00mm Farklı
(Outside Diameter
0,50 mm Different)

14-025813-00-D
B : 110.450
L : 218.500
D : 111.500
C : 7.000
Dış Çap 1,50mm Farklı
(Outside Diameter
1,50 mm different)

14-025814-00-D
B : 110.950
L : 218.500
D : 112.000
C : 7.000
Dış Çap 2,00mm Farklı
(Outside Diameter
2,00 mm Different)



Silindir Kit
(Assembly Set)



Piston - Blok Montaj
Yüksekliği
(Piston - Block
Assembly Height)

+ 0,152 / + 0,380





FORD LKW - Ø 104,77

87-70888-STD

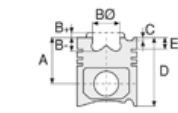


Motor Özellikleri
(Engine Specifications)

İmalatçı (Manufacturer):
FORD LKW
Çap (Diameter): Ø 104,77
FM Grup No: 3069

DOVER 6.0 TCI
EURO1

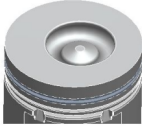
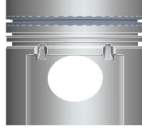
6 Sil. Dizel 5946cc
Turbo Intercooled
CARGO 2116,
CARGO 2520L
2002....



Piston Ölçüleri
(Piston Dimensions)

A : 71.230
B- : 20.800
BØ: 51.900
BX : 4.800
D : 112.880
E : 18.300

Pim: 41 x 87,12



Piston Özellikleri
(Piston Features)

Segman Taşıyıcı
(Ring Carrier)
Gözarası Konik
(Conical Eye Gap)



Piston Parça No
(Piston Part No)

87-843400-22
87-70888-STD



Segman Seti
(Ring Set)

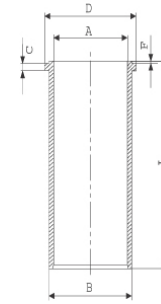
06-843400-00-STD

3.000 PSP KVI
2.500 P STD
4.000 NT ST



Silindir Gömleği
(Liner)

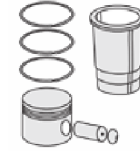
14-040060-00-D
B : 109.075
L : 218.510
D : 113.000
C : 5.000



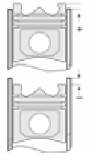
14-040060-00-DH

14-040061-00 D
B : 109.575
L : 218.510
D : 113.000
C : 5.000
F : 0.700

Dış Çap 0,50mm Farklı
(Outside Diameter
0,50 mm Different)



Silindir Kit
(Assembly Set)



Piston - Blok Montaj
Yüksekliği
(Piston - Block
Assembly Height)

+0,25/+0,40





FORD LKW - Ø 104,77

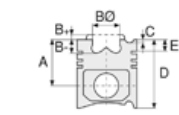
87-70907-STD



Motor Özellikleri
(Engine Specifications)

İmalatçı (Manufacturer):
FORD LKW
Çap (Diameter): Ø 104,77
FM Grup No: 3054

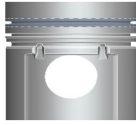
DOVER 6.0 TCI
6 Sil. Dizel 5946cc
Turbo Intercooled
CARGO 2621 500K
1981 - 1996



Piston Ölçüleri
(Piston Dimensions)

A : 71.230
B- : 20.300
BØ : 55.900
BX : 4.800
D : 112.880
E : 18.300

Pim: 41 x 87,12



Piston Özellikleri
(Piston Features)

Segman Taşıyıcı
(Ring Carrier)
Gözarası Konik
(Conical Eye Gap)



Piston Parça No
(Piston Part No)

87-843400-42
87-70907-STD

87-843400-43
87-70907-STD1
0,20 mm Kısa
(Short)



Segman Seti
(Ring Set)

06-843400-00-STD

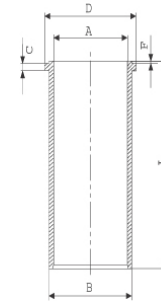
3.000 PSP KVI
2.500 P STD
4.000 NT ST



Silindir Gömleği
(Liner)

14-040060-00-D

B : 109.075
L : 218.510
D : 113.000
C : 5.000

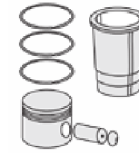


14-040060-00-DH

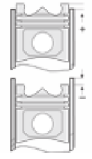
14-040061-00-D

B : 109.575
L : 218.510
D : 113.000
C : 5.000
F : 0.700

Dış Çap 0,50mm Farklı
(Outside Diameter
0,50 mm Different)



Silindir Kit
(Assembly Set)



Piston - Blok Montaj
Yüksekliği
(Piston - Block
Assembly Height)

+0,25/+0,40





FORD LKW - Ø 104,77

87-70909-STDC



Motor Özellikleri
(Engine Specifications)

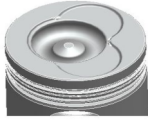
İmalatçı (Manufacturer):
FORD LKW
Çap (Diameter): Ø 104,77
FM Grup No: 3050

DOVER 6.0 TCI
6 Sil. Dizel 5946cc
185 PS
Turbo Intercooled
CARGO 2520
1992....

Piston Ölçüleri
(Piston Dimensions)

A : 71.250
B - : 21.500
BØ : 55.000
BX : 5.000
C1 : 2.300
D : 119.900
E : 18.300

Pim: 41 x 87,12



Piston Özellikleri
(Piston Features)

Segman Taşıyıcı
(Ring Carrier)
Sert Anotlama
(Hard Anodizing)
Gözarası Konik
(Conical Eye Gap)

Piston Parça No
(Piston Part No)

87-843000-23
7-70909-STD1C
0,20 mm Kısa
(Short)
87-843000-24
87-70909-STD2C
0,40 mm Kısa
(Short)
87-843000-22
87-70909-STDC

87-835800-33
87-70909-STD1F
0,20 mm kısa
(short)

87-835800-34
87-70909-STD2F
0,40 mm Kısa
(Short)

87-835800-32
87-70909-STDF

Segman Seti
(Ring Set)

06-843000-00-STD
3.000 PSP KV1
2.500 P STD
4.000 P IKA
Goetze® LKZ-Ring®

06-835800-80-STD

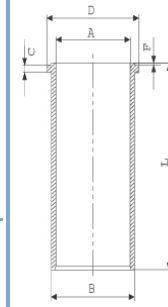
3.000 CK KV1
2.500 STD
4.000 CR STD

İçi Krom Kaplı Gömlekte
Kullanılmaz / (Inside
Chrome Plated Not Used
on Shirts)

Goetze® LKZ-Ring®

Silindir Gömleği
(Liner)

14-040301-00-DH
B : 108.975
L : 218.507
D : 112.586
C : 4.737
F : 0.700



İçi Krom Kaplı No 1
(Inside Chrome Plated
No 1)

14-040302-00-DH
B : 108.988
L : 218.507
D : 112.586
C : 4.737
F : 0.700

İçi Krom Kaplı No 2
(Inside Chrome Plated
No 2)

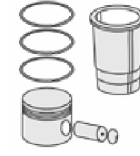
14-040303-00-DH
B : 109.001
L : 218.507
D : 112.586
C : 4.737
F : 0.700

İçi Krom Kaplı No 3
(Inside Chrome Plated
No 3)

14-040304-00-DH
B : 109.014
L : 218.507
D : 112.586
C : 4.737
F : 0.700

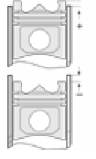
İçi Krom Kaplı No 4
(Inside Chrome Plated
No 4)

Silindir Kit
(Assembly Set)



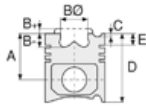
Piston - Blok Montaj
Yüksekliği
(Piston - Block
Assembly Height)

+0,30/+0,40





Motor Özellikleri
(Engine Specifications)



Piston Ölçüleri
(Piston Dimensions)



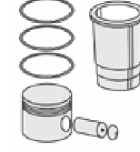
Piston Parça No
(Piston Part No)



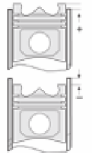
Segman Seti
(Ring Set)



Silindir Gömleği
(Liner)



Silindir Kit
(Assembly Set)



Piston - Blok Montaj
Yüksekliği
(Piston - Block
Assembly Height)

14-040305-00-DH
B : 109.177
L : 218.507
D : 112.586
C : 4.737
F : 0.700

İçi Krom Kaplı No 5
(Inside Chrome Plated
No 5)

14-040306-00-DH
B : 109.305
L : 218.507
D : 112.586
C : 4.737
F : 0.700

İçi Krom Kaplı No 6
(Inside Chrome Plated
No 6)

14-040307-00-DH
B : 109.433
L : 218.507
D : 112.586
C : 4.737
F : 0.700

İçi Krom Kaplı No 7
(Inside Chrome Plated
No 7)

14-040308-00-DH
B : 109.561
L : 218.507
D : 112.586
C : 4.737
F : 0.700

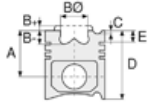
İçi Krom Kaplı No 8
(Inside Chrome Plated
No 8)

14-041950-00-D
B : 109.050
L : 218.510
D : 112.586
C : 4.737
F : 0.700

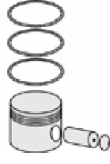




Motor Özellikleri
(Engine Specifications)



Piston Ölçüleri
(Piston Dimensions)



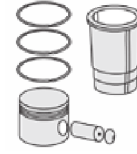
Piston Parça No
(Piston Part No)



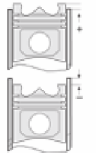
Segman Seti
(Ring Set)



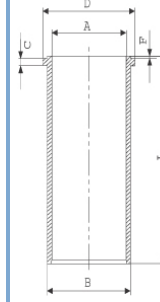
Silindir Gömleği
(Liner)



Silindir Kit
(Assembly Set)



Piston - Blok Montaj
Yüksekliği
(Piston - Block
Assembly Height)



14-041954-00-D
B : 109.300
L : 218.510
D : 112.586
C : 4.737
F : 0.700

Dış Çap 0,25mm Farklı
(Outside Diameter
0,25 mm Different)

14-041955-00-D
B : 109.550
L : 218.510
D : 112.586
C : 4.737
F : 0.700

Dış Çap 0,50mm Farklı
(Outside Diameter
0,50 mm Different)

14-041956-00-D
B : 110.050
L : 218.510
D : 113.000
C : 5.000
F : 0.700

Dış Çap 1,00mm Farklı
(Outside Diameter
1,00 mm Different)

14-041957-00-D
B : 109.100
L : 218.510
D : 112.586
C : 4.737
F : 0.700

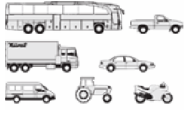
Dış Çap 0,05mm Farklı
(Outside Diameter
0,05 mm Different)





FORD LKW - Ø 107,21

87-70845-STD



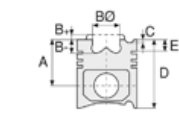
Motor Özellikleri
(Engine Specifications)

İmalatçı (Manufacturer):
FORD LKW
Çap (Diameter): Ø 107,21
FM Grup No: 3058

254 CID
4 Sil. Dizel 4160cc 66 Kw
(90 PS) 16:1

380 CID
6 Sil. Dizel 6221cc
89 Kw (121 PS) 16:1
D 0712, D 0812, D 0813,
D 0912, D 1013
1981....

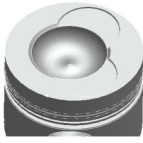
DOVER
6 Sil. Dizel 6224cc
96 Kw (128 PS) 16:1
DSMZ, KAMYON 2014,
KAMYON 2514,
OTOBUS 131.11.8



Piston Ölçüleri
(Piston Dimensions)

A : 71.250
B- : 23.300
BØ: 58.700
BX : 3.700
C1 : 2.300
D : 119.900
E : 25.000

Pim: 36,505 x 86,2



Piston Özellikleri
(Piston Features)

Segman Taşıyıcı
(Ring Carrier)
Çelik Plaka
(Steel Strut)
Gözarası Düz
(Flat Eye Gap)



Piston Parça No
(Piston Part No)

87-782900-02
87-70845-STD

87-782906-02
87-70845 015

87-782910-02
87-70845 035



Segman Seti
(Ring Set)

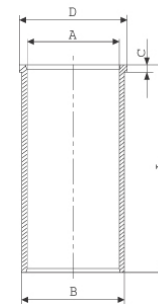
06-782900-10-STD
06-782906-10 0,015 "
06-782910-10 0,035 "

2.385 CR KV1
2.385 P STD
4.747 CR STD



Silindir Gömleği
(Liner)

14-025840-00-D
B : 112.000
L : 213.000
D : 113.000
C : 6.000

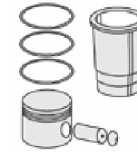


14-025841-00-D
B : 112.500
L : 213.000
D : 113.500
C : 6.000

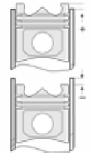
Dış Çap 0,50mm Farklı
(Outside Diameter
0,50 mm Different)

14-025842-00-D
B : 113.000
L : 213.000
D : 114.000
C : 6.000

Dış Çap 1,00mm Farklı
(Outside Diameter
1,00 mm Different)



Silindir Kit
(Assembly Set)



Piston - Blok Montaj
Yüksekliği
(Piston - Block
Assembly Height)

+ 0,152 / + 0,380



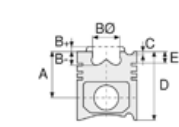


Motor Özellikleri
(Engine Specifications)

İmalatçı (Manufacturer):
FORD LKW
Çap (Diameter): Ø 107,21
FM Grup No: 3060

2712 E
4 Sil. Dizel 4161cc
55 Kw (75 PS) 16,5:1
1969 - 1981

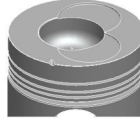
2715 E
6 Sil. Dizel 6224cc
84 Kw (114 PS) 16,5:1
6500, 7095, D 0610,
D 0911, D 1011, D 1111,
D 1211, D 300, D 400,
D 500, D 550, D 600,
D 607, D 700, D 707,
D 750, D 900, DT 800
YUKLEYICI
1969 - 1975



Piston Ölçüleri
(Piston Dimensions)

A : 71.200
B- : 27.770
BØ : 51.560
BX : 3.800
C1 : 1.700
D : 119.890
E : 20.070

Pim: 36,512 x 90



Piston Özellikleri
(Piston Features)

Gözarası Düz
(Flat Eye Gap)



Piston Parça No
(Piston Part No)

87-214800-22
87-70871-STD
87-214807-22
87-70871 020
87-214811-22
87-70871 040



Segman Seti
(Ring Set)

06-214800-10-STD
06-214807-10 0,020 "
06-214811-10 0,040 "

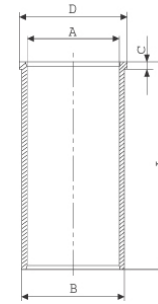
2.385 CRP KVI
2.385 P STD
2.385 P STD
4.747 CRP STD

Goetze® LKZ-Ring®



Silindir Gömleği
(Liner)

14-025840-00-D
B : 112.000
L : 213.000
D : 113.000
C : 6.000

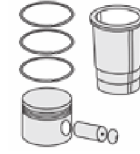


14-025841-00-D
B : 112.500
L : 213.000
D : 113.500
C : 6.000

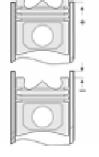
Dış Çap 0,50mm Farklı
(Outside Diameter
1,00 mm Different)

14-025842-00-D
B : 113.000
L : 213.000
D : 114.000
C : 6.000

Dış Çap 1,00mm Farklı
(Outside Diameter
1,00 mm Different)



Silindir Kit
(Assembly Set)



Piston - Blok Montaj
Yüksekliği
(Piston - Block
Assembly Height)

- 0,15 / + 0,40





FORD LKW - Ø 107,21

87-70879-STD



Motor Özellikleri
(Engine Specifications)

İmalatçı (Manufacturer):
FORD LKW
Çap (Diameter): Ø 107,21
FM Grup No: 3059

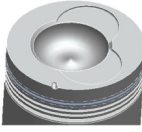
254 CID
4 Sil. Dizel 4160cc
66 Kw (90 PS) 16:1

380 CID
6 Sil. Dizel 6221cc
89 Kw (121 PS) 16:1
D 0712, D 0812, D 0813,
D 0912, D 1013
1981....

DOVER
6 Sil. Dizel 6224cc
96 Kw (128 PS) 16:1
DSMZ, KAMYON 2014,
KAMYON 2514,
OTOBUS 131.11.8

Piston Ölçüleri
(Piston Dimensions)

A : 71.250
B - : 23.300
BØ : 58.700
BX : 3.700
C1 : 2.300
D : 119.900
E : 19.700
Pim: 36,505 x 86,2



Piston Özellikleri
(Piston Features)

Segman Taşıyıcı
(Ring Carrier)
Çelik Plaka
(Steel Strut)
Gözarası Düz
(Flat Eye Gap)

Piston Parça No
(Piston Part No)

87-214800-02
87-70879-STD
87-214807-02
87-70879 0,20
87-214811-02
87-70879 0,40



Segman Seti
(Ring Set)

06-214800-10-STD
06-214807-10 0,020 "
06-214811-10 0,040 "

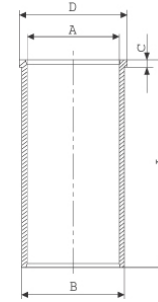
2.385 CRP KVI
2.385 P STD
2.385 P STD
4.747 CRP STD

Goetze® LKZ-Ring®



Silindir Gömleği
(Liner)

14-025840-00-D
B : 112.000
L : 213.000
D : 113.000
C : 6.000



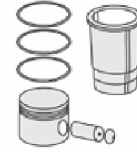
14-025841-00-D
B : 112.500
L : 213.000
D : 113.500
C : 6.000

Dış Çap 0,50mm Farklı
(Outside Diameter
1,00 mm different)

14-025842-00-D
B : 113.000
L : 213.000
D : 114.000
C : 6.000

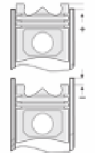
Dış Çap 1,00mm Farklı
(Outside Diameter
1,00 mm different)

Silindir Kit
(Assembly Set)



Piston - Blok Montaj
Yüksekliği
(Piston - Block
Assembly Height)

+ 0,152 / + 0,380





FORD LKW - Ø 108

87-71486-STD

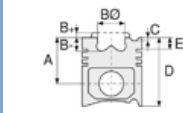


Motor Özellikleri
(Engine Specifications)

İmalatçı (Manufacturer):
FORD LKW
Çap (Diameter): Ø 108
FM Grup No: 3070

DEUTZ BF6M 1013
EURO2

6 Sil. Dizel 7146cc 195
Kw (265 PS) 17,6:1
Turbo Intercooled /
KHD ve Otokar ile
ortak motor
(Common Engine With
Turbo Intercooled /
KHD and Otokar)
1827, 2527, 3227
2001 - 2003



Piston Ölçüleri
(Piston Dimensions)

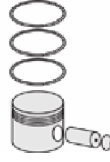
A : 71.150
B - : 19.850
BØ : 63.000
BX : 4.000
BY : 2.300
D : 108.000
E : 14.000

Pim: 42 x 86



Piston Özellikleri
(Piston Features)

Segman Taşıyıcı
(Ring Carrier)
Yağ Püskürtme Oyuğu
(Oil Jet Cut-out)
Gözarası Konik
(Conical Eye Gap)



Piston Parça No
(Piston Part No)

87-136900-02
87-71486-STD



Segman Seti
(Ring Set)

06-136900-00-STD

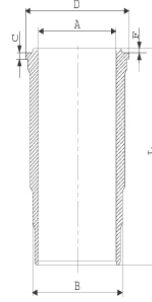
3.000 CK KV1
2.000 NTP KV1
3.500 CRP STD
Goetze® LKZ-Ring®



Silindir Gömleği
(Liner)

14-480040-00-WH

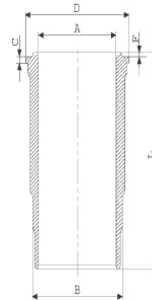
B : 118.000
L : 229.100
D : 128.500
C : 9.000
F : 1.100



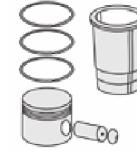
O-RİNG Bilgi
(O Ring Information)
24-35047-30/O
2 X (112*3) FKM
PEROXIDE

14-480720-00-WH

B : 120.000
L : 229.100
D : 128.500
C : 9.000
F : 1.100

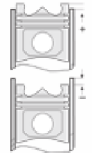


Dış Yüzeyi
Fosfat Kaplı
(Outer Surface
Phosphate Coated)



Silindir Kit
(Assembly Set)

88-136900-02-STD
88-71486-STD



Piston - Blok Montaj
Yüksekliği
(Piston - Block
Assembly Height)

+ 0,25 / + 0,54
+ 0,54 / + 0,64
+ 0,64 / + 0,74



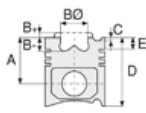


FORD LKW - Ø 108

87-71486-STD



Motor Özellikleri
(Engine Specifications)



Piston Ölçüleri
(Piston Dimensions)



Piston Parça No
(Piston Part No)

87-123800-22
87-71486-STD



Segman Seti
(Ring Set)

06-123800-20-STD

3.000  CR KV1
2.000  NTP KV1
3.500  CRP STD
Goetze® LKZ-Ring®



Silindir Gömleği
(Liner)

14-480720-00-WH

Dış Yüzeyi
Fosfat Kaplı
(Outer Surface
Phosphate Coated)

14-480040-00-WH

O-RİNG Bilgi
(O Ring Information)
24-35047-30/O
2 X (112*3) FKM
PEROXIDE

14-480041-00-WH

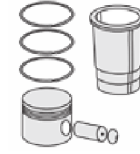
B : 118.000
L : 229.100
D : 128.500
C : 9.500
F : 1.100

Flanş Kalınlığı ve
Flanş Alt Boğaz Çapı
+0,50 mm Farklı
(Flange Thickness and
Flange Bottom Throat
Diameter +0.50mm
Different)

14-480042-00-WH

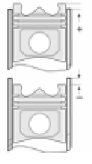
B : 118.000
L : 229.100
D : 128.500
C : 10.000
F : 1.100

Flanş Kalınlığı ve
Flanş Alt Boğaz Çapı
+1,00 Farklı Çalışması
(Flange Thickness and
Flange Bottom Throat
Diameter +1.00
Different Work)



Silindir Kit
(Assembly Set)

89-123800-42-STD
89-71486-STDC



Piston - Blok Montaj
Yüksekliği
(Piston - Block
Assembly Height)



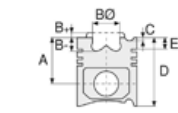


Motor Özellikleri
(Engine Specifications)

İmalatçı (Manufacturer):
KHD-FORD LKW
Çap (Diameter): Ø 108
FM Grup No: 3071

DEUTZ BF6M 1013
EURO2

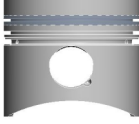
6 Sil. Dizel 7146cc 195
Kw (265 PS) 17, 6:1
Turbo Intercooled /
KHD ile Ortak Motor
(With KHD Common
Engine)
1827, 2527, 3227
1999 - 2003



Piston Ölçüleri
(Piston Dimensions)

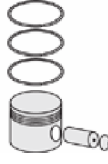
A : 71.150
B- : 18.800
BØ : 63.000
BX : 4.000
BY : 2.300
D : 108.000
E : 8.200

Pim : 42 x 86



Piston Özellikleri
(Piston Features)

Segman Taşıyıcı
(Ring Carrier)
Gözarası Konik
(Conical Eye Gap)



Piston Parça No
(Piston Part No)

87-136900-22
87-71487-STD



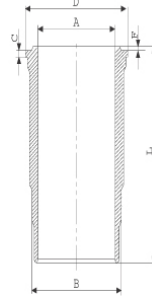
Segman Seti
(Ring Set)

06-136900-00-STD
3.000 CK KV1
2.000 NTP KV1
3.500 CRP STD
Goetze® LKZ-Ring®



Silindir Gömleği
(Liner)

14-480040-00-WH
B : 118.000
L : 229.100
D : 128.500
C : 9.000
F : 1.100



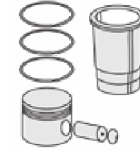
O RİNG BİLGİ
(O Ring Information)
24-35047-30/O
2 X (112*3)
FKM PEROXIDE

14-480041-00-WH
B : 118.000
L : 229.100
D : 128.500
C : 9.500
F : 1.100

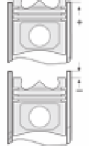
Flanş Kalınlığı Ve
Flanş Alt Boğaz Çapı
+0,50 mm Farklı
(Flange Thickness And
Flange Bottom
Throat Diameter
+0.50mm Different)

14-480042-00 WH
B : 118.000
L : 229.100
D : 128.500
C : 10.000
F : 1.100

Flanş Kalınlığı Ve Flanş
Alt Boğaz Çapı +1,00
Farklı Çalışması
(Flange Thickness And
Flange Lower Throat
Diameter +1.00
Different Operation)



Silindir Kit
(Assembly Set)



Piston - Blok Montaj
Yüksekliği
(Piston - Block
Assembly Height)

+ 0,25 / + 0,54
+ 0,54 / + 0,64
+ 0,64 / + 0,74





FORD LKW - Ø 112,01

87-70900-STD

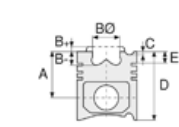


Motor Özellikleri
(Engine Specifications)

İmalatçı (Manufacturer):
FORD LKW
Çap (Diameter): Ø 112,01
FM Grup No: 3072

ECOTORQ NHDD

6 Sil. Dizel 7300cc
240 BG/300 BG
Mavi Blok Motorlar
(Blue Block Engines)
YENİ FORD KARGO 1824,
YENİ FORD KARGO 2524,
YENİ FORD KARGO 2530,
YENİ FORD KARGO 3230,
YENİ FORD KARGO 4030
2003....



Piston Ölçüleri
(Piston Dimensions)

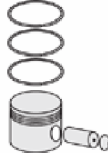
A : 79.350
B - : 18.760
BØ : 74.000
D : 120.350
E : 17.350

Pim: 46 x 92,3



Piston Özellikleri
(Piston Features)

Segman Taşıyıcı
(Ring Carrier)
Soğutma Kanallı
(Coolin Gallery)
Yağ Püskürtme Oyuğu
(Oil Jet Cut-out)
Gözarası Konik
(Conical Eye Gap)



Piston Parça No
(Piston Part No)

87-842900-02
87-70900-STD

87-842900-03
87-70900-STD1
0,20 mm Kısa
(Short)

87-842900-04
87-70900-STD2
0,40 mm kısa
(short)



Segman Seti
(Ring Set)

06-842900-00-STD

3.000 CKP KV4
2.500 P F14
3.000 CRP GOE

Goetze® LKZ-Ring®



Silindir Gömleği
(Liner)

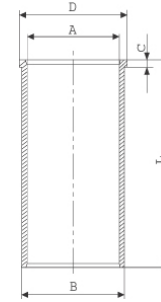
14-020970-00-DH

B : 115.035

L : 235.000

D : 125.800

C : 5.000



Grade 1-2-3
(Grup 1-2-3)

14-020971-00-DH

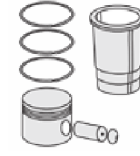
B : 115.285

L : 235.000

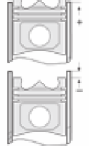
D : 125.050

C : 5.000

Grade 4-5 (Grup 4-5)



Silindir Kit
(Assembly Set)



Piston - Blok Montaj
Yüksekliği
(Piston - Block
Assembly Height)

+0,21 / +0,31





FORD - Ø 112,01

87-72743-STD

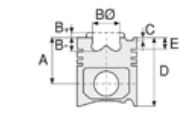


Motor Özellikleri
(Engine Specifications)

İmalatçı (Manufacturer):
FORD LKW
Çap (Diameter): Ø 112,01
FM Grup No: 3127

ECOTORQ NHDD

6 Sil. Dizel 7300cc
260 PS
SARI BLOK MOTORLAR
(Yellow Block Engines)
1826, 2526
2010....



Piston Ölçüleri
(Piston Dimensions)

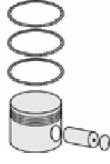
A : 79.350
B- : 16.000
BØ : 66.000
D : 120.350
E : 17.350

Pim: 46 x 92,3



Piston Özellikleri
(Piston Features)

Segman Taşıyıcı
(Ring Carrier)
Soğutma Kanallı
(Coolin Gallery)
Yağ Püskürtme Oyuğu
(Oil Jet Cut-out)
Gözarası Konik
(Conical Eye Gap)



Piston Parça No
(Piston Part No)

87-842900-22
87-72743-STD



Segman Seti
(Ring Set)

06-842900-00-STD

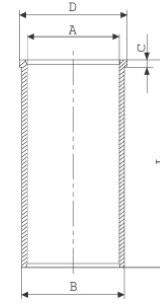
3.000 CKP KV4
2.500 P F14
3.000 CRP GOE

Goetze® LKZ-Ring®



Silindir Gömleği
(Liner)

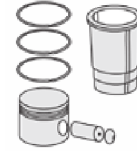
14-020970-00-DH
B : 115.035
L : 235.000
D : 125.800
C : 5.000



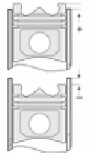
Grade 1-2-3
(Grup 1-2-3)

14-020971-00-DH
B : 115.285
L : 235.000
D : 125.050
C : 5.000

Grade 4-5 (Grup 4-5)

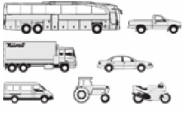


Silindir Kit
(Assembly Set)



Piston - Blok Montaj
Yüksekliği
(Piston - Block
Assembly Height)





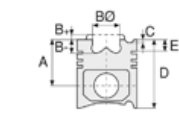
Motor Özellikleri
(Engine Specifications)

İmalatçı (Manufacturer):
Cummins - Ford
Çap (Diameter): 114
FM Grup No: 2109

6CTAA EURO1

6 Sil. Dizel 8298cc
160 Kw (214PS) 17,3:1
PRO 827

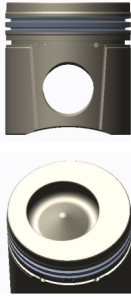
Cummins ile Ford ortak
motor
(Common and Ford
Engine With
Cummins)
32X26 Cargo



Piston Ölçüleri
(Piston Dimensions)

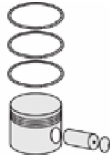
A : 79.020
B- : 21.000
BØ : 65.310
BX : 5.500
D : 120.520
E : 14.520

Pim: 45 x 91,1



Piston Özellikleri
(Piston Features)

Çift Segman Taşıyıcı
Gözarası Konik
(Double Ring Carrier
Conical Eye Gap)



Piston Parça No
(Piston Part No)

87-155600-62
87-70428-STD

87-155600-63
87-70428-STD1
0,20mm Kısa (Short)

87-155600-64
87-70428-STD2
0,40 mm Kısa (Short)



Segman Seti
(Ring Set)

06-155600-10-STD

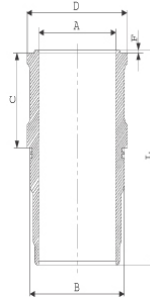
3.500 CRP KV1
3.000 P F14
4.000 CR STD

Goetze® LKZ-Ring®



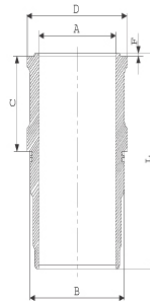
Silindir Gömleği
(Liner)

14-749630-00-WH
B : 125.685
L : 235.370
D : 130.948
C : 123.039
F : 1.250

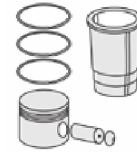


O-RING BİLGİ
(O-Ring Information)
50-35047-60/O
1x 120*124*4 FP

14-740020-00-WH
B : 125.685
L : 235.370
D : 130.948
C : 123.039
F : 1.250

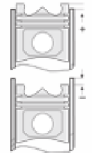


3,00mm Kısa (Short)



Silindir Kit
(Assembly Set)

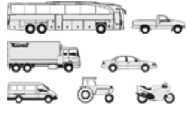
89-155600-72-STD
89-70428-STD



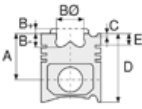
Piston - Blok Montaj
Yüksekliği
(Piston - Block
Assembly Height)

+0,20 / +0,50





Motor Özellikleri
(Engine Specifications)



Piston Ölçüleri
(Piston Dimensions)



Piston Parça No
(Piston Part No)

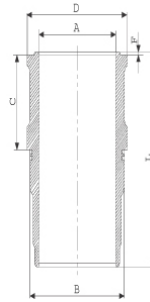


Segman Seti
(Ring Set)

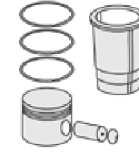


Silindir Gömleği
(Liner)

14-740040-00-WH
B : 125.685
L : 235.370
D : 131.200
C : 124.250
F : 1.250

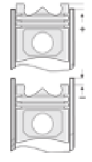


C:1,20mm Uzun (Long)



Silindir Kit
(Assembly Set)

89-155600-04-STD
89-70428-STD B



Piston - Blok Montaj
Yüksekliği
(Piston - Block
Assembly Height)

14-740020-00-WH
3,00mm Kısa (Short)

14-740040-00-WH
C:1,20mm Uzun (Long)

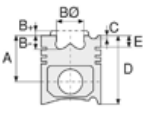
14-740080-00-WH
B : 125.685
L : 235.370
D : 131.200
C : 124.550
F : 1.250

C:1,50 mm Uzun (Long)

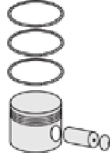




Motor Özellikleri
(Engine Specifications)



Piston Ölçüleri
(Piston Dimensions)



Piston Parça No
(Piston Part No)

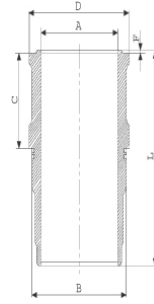


Segman Seti
(Ring Set)

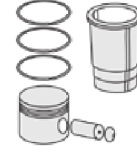


Silindir Gömleği
(Liner)

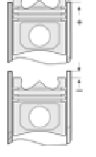
14-749640-00-WH
B: 125.685
L: 235.370
D: 131.200
C: 124.250
F: 1.250



C:1,20mm Uzun (Long)



Silindir Kit
(Assembly Set)



Piston - Blok Montaj
Yüksekliği
(Piston - Block
Assembly Height)





FORD LKW - Ø 115

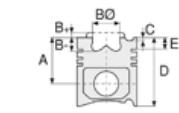
87-72741-STD



Motor Özellikleri
(Engine Specifications)

İmalatçı (Manufacturer):
FORD LKW
Çap (Diameter): Ø 115
FM Grup No: 3027

H 476 NHDD
ECOTORQ TCI
6 Sil. Dizel 8974cc 350 PS
C.RAIL
Sarı Blok Motorlar
(Yellow Block Engines)
1835 ÇEKİCİ,
2535 R CARGO,
3235 C CARGO,
3235 S CARGO



Piston Ölçüleri
(Piston Dimensions)

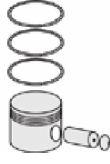
A : 71.000
B- : 18.900
BØ : 71.490
D : 116.500
E : 10.000

Pim: 48 x 91,5



Piston Özellikleri
(Piston Features)

Segman Taşıyıcı
(Ring Carrier)
Soğutma Kanallı
(Coolin Gallery)
Yağ Püskürtme Oyuğu
(Oil Jet Cut-out)
Gözarası Konik
(Conical Eye Gap)



Piston Parça No
(Piston Part No)

87-842807-03
87-72741-0501
0,20 mm Kısa (Short)

87-842811-02
87-72741-1001
0,20 mm Kısa (Short)

87-842800-02
87-72741-STD

87-842807-02
87-72741-050

87-842811-02
87-72741 1,00

87-842800-03
87-72741-STD1
0,20 mm Kısa (Short)



Segman Seti
(Ring Set)

06-842800-00-STD
06-842807-00 0,50 mm
06-842811-00 1,00 mm

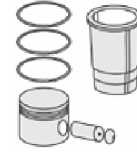
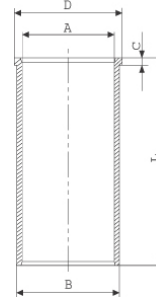
3.000 CKP KV4
2.500 P F14
3.000 CRP GOE13

Goetze® LKZ-Ring®

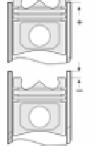


Silindir Gömleği
(Liner)

14-021820-00-D
B : 118.000
L : 245.000
D : 121.000
C : 5.000



Silindir Kit
(Assembly Set)



Piston - Blok Montaj
Yüksekliği
(Piston - Block
Assembly Height)

0,250 /0,450





FORD LKW - Ø 115

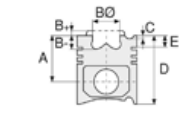
87-72800-STD



Motor Özellikleri
(Engine Specifications)

İmalatçı (Manufacturer):
FORD LKW
Çap (Diameter): Ø 115
FM Grup No: 3130

NHDD 9.0L Euro 6
6 Sil. Dizel 8974cc
330 PS (243 kW) 17,6 : 1
1833-2533-2633-3233
2015....



Piston Ölçüleri
(Piston Dimensions)

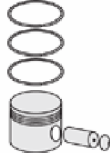
A : 71.000
B - : 18.700
BØ : 82.000
C1 : 1.800
D : 116.500
E : 10.000

Pim: 48 x 91,5



Piston Özellikleri
(Piston Features)

Segman Taşıyıcı
(Ring Carrier)
Soğutma Kanallı
(Coolin Gallery)
Yağ Püskürtme Oyuğu
(Oil Jet Cut-out)
Gözarası Konik
(Conical Eye Gap)



Piston Parça No
(Piston Part No)




87-842800-22
87-72800-STD

87-842807-22
87-72800 0,50



Segman Seti
(Ring Set)

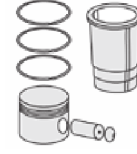
06-842800-00-STD
06-842807-00 0,50 mm
06-842811-00 1,00 mm

3.000  CKP KV4
2.500  P F14
3.000  CRP GOE13

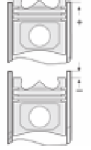
Goetze® LKZ-Ring®



Silindir Gömleği
(Liner)



Silindir Kit
(Assembly Set)



Piston - Blok Montaj
Yüksekliği
(Piston - Block
Assembly Height)





FORD LKW - Ø 115

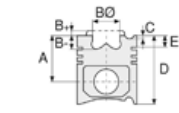
87-72801-STD



Motor Özellikleri
(Engine Specifications)

İmalatçı (Manufacturer):
FORD LKW
Çap (Diameter): Ø 115
FM Grup No: 3133

NHDD 9.0L Euro 6
6 Sil. Dizel 8974cc
243 kW
1833-2533-2633-3233
2015....



Piston Ölçüleri
(Piston Dimensions)

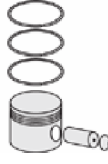
A : 71.000
B- : 18.700
BØ : 82.000
C1 : 1.800
D : 116.500
E : 10.220

Pim: 48 x 91,5



Piston Özellikleri
(Piston Features)

Segman Taşıyıcı
(Ring Carrier)
Soğutma Kanallı
(Coolin Gallery)
Yağ Püskürtme Oyuğu
(Oil Jet Cut-out)
Gözarası Konik
(Conical Eye Gap)



Piston Parça No
(Piston Part No)

87-800500-02
87-72801-STD



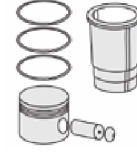
Segman Seti
(Ring Set)

06-800500-00-STD

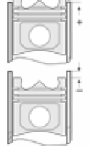
2.500 CKS KV4
2.000 P F14
3.000 CRP GOE



Silindir Gömleği
(Liner)



Silindir Kit
(Assembly Set)



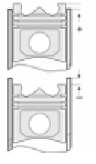
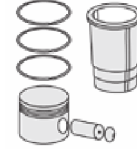
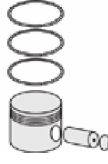
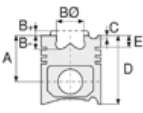
Piston - Blok Montaj
Yüksekliği
(Piston - Block
Assembly Height)





FORD LKW - Ø 130

87-75508-STD



Motor Özellikleri
(Engine Specifications)

İmalatçı (Manufacturer):
FORD LKW
Çap (Diameter): Ø 130
FM Grup No: 3126

Ecotorq 12.7L
6 Sil. Dizel
309 kw-420 PS
4142D EURO 6
2015....

Piston Ölçüleri
(Piston Dimensions)

A : 65.000
B- : 19.050
BØ : 77.540
C1 : 1.700
D : 102.000
E : 8.100

Pim: 58 x 80



Piston Özellikleri
(Piston Features)

Soğutma Kanallı
(Coolin Gallery)
Gözarası Konik
(Conical Eye Gap)

Piston Parça No
(Piston Part No)

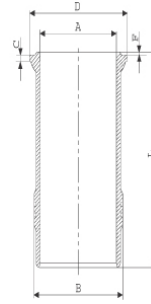
87-845100-02
87-75508-STD
Tek Parça
Çelik Piston
(Monosteel Piston)

Segman Seti
(Ring Set)

06-845100-20-STD
3.000 PVD ST
2.500 CR KV4
3.500 CK GOE

Silindir Gömleği
(Liner)

14-480910-00-WH
B : 146.500
L : 267.800
D : 160.100
C : 12.080



24-35054-20/0
2*137,50X3,40 CR
Neopren

Silindir Kit
(Assembly Set)

89-845100-02-STD
89-75508-STD

Piston - Blok Montaj
Yüksekliği
(Piston - Block
Assembly Height)

-0,150 /+0,130

