



FORD TRK - Ø 111,784

87-70850-STD

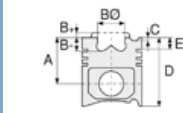


**Motor Özellikleri**  
(Engine Specifications)

İmalatçı (Manufacturer):  
FORD TRK  
Çap (Diameter): Ø 111,784  
FM Grup No: 3163

**BSD 333**  
3 Sil. Dizel 3294cc 16,3:1  
6610 S HEMA TRAKTOR  
1987 - 1991

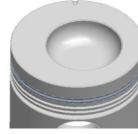
**BSD 444**  
4 Sil. Dizel 4392cc 16,3:1  
1987 - 1991



**Piston Ölçüleri**  
(Piston Dimensions)

A : 68.120  
B- : 19.260  
BØ : 61.850  
BX : 9.000  
BY : 2.900  
D : 127.000  
E : 17.830

Pim: 38,1 x 89,15



**Piston Özellikleri**  
(Piston Features)

Segman Taşıyıcı  
(Ring Carrier)  
Gözarası Düz  
(Flat Eye Gap)



**Piston Parça No**  
(Piston Part No)

87-202400-42  
87-70850-STD

87-202407-42  
87-70850 0,020

87-202409-42  
87-70850 0,030

87-202411-42  
87-70850 0,040



**Segman Seti**  
(Ring Set)

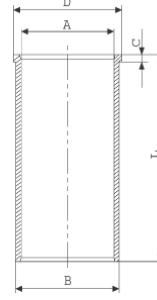
06-202400-20-STD  
06-202405-20 0,010 "  
06-202407-20 0,020 "  
06-202409-20 0,030 "  
06-202411-20 0,040 "

2.385 CR KV1  
2.385 CR STD  
2.385 STD  
4.740 CR STD



**Silindir Gömleği**  
(Liner)

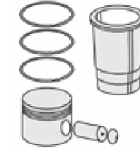
14-020740-00-D  
B : 114.360  
L : 208.500  
D : 120.530  
C : 2.600



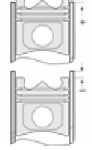
14-020741-00-D  
B : 115.960  
L : 208.500  
D : 120.530  
C : 2.600

Dış çap 1,55 mm farklı  
(Outside Diameter  
1,55 mm different)

14-025330-00 D  
B : 115.920  
L : 210.000  
D : 117.120  
C : 6.300



**Silindir Kit**  
(Assembly Set)



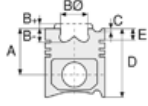
**Piston - Blok Montaj**  
Yüksekliği  
(Piston - Block  
Assembly Height)

+ 0,28 / + 0,58





**Motor Özellikleri**  
(Engine Specifications)



**Piston Ölçüleri**  
(Piston Dimensions)



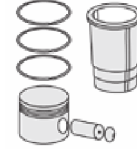
**Piston Parça No**  
(Piston Part No)



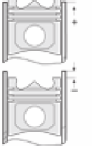
**Segman Seti**  
(Ring Set)



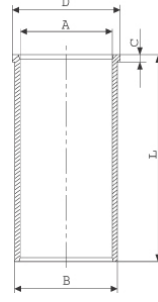
**Silindir Gömleği**  
(Liner)



**Silindir Kit**  
(Assembly Set)



**Piston - Blok Montaj**  
**Yüksekliği**  
(Piston - Block  
Assembly Height)



**Yüksek Flanşlı**  
(High Flange)

14-025331-00-D  
B : 116.920  
L : 210.000  
D : 118.120  
C : 6.300

Yüksek Flanşlı ve  
Dış Çap 1,00mm Farklı  
(High Flange and  
Outside Diameter  
1,00 mm Different)





FORD TRK - Ø 111,76

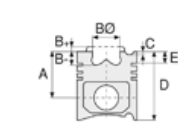
87-70902-STD



**Motor Özellikleri**  
(Engine Specifications)

İmalatçı (Manufacturer):  
FORD TRK  
Çap (Diameter): Ø 111,76  
FM Grup No: 3165

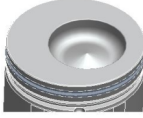
**4983 T**  
4 Sil Dizel 4983cc  
70 kw (95 Ps) 17,5:1  
7740 TRK  
1994....



**Piston Ölçüleri**  
(Piston Dimensions)

A : 72.900  
B- : 19.860  
BØ : 61.850  
BX : 9.000  
BY : 2.920  
D : 126.290  
E : 9.480

Pim: 41,275 x 94,5



**Piston Özellikleri**  
(Piston Features)

Segman Taşıyıcı  
(Ring Carrier)  
Gözarası Konik  
(Conical Eye Gap)



**Piston Parça No**  
(Piston Part No)

87-843500-02  
87-70902-STD

87-843507-02  
87-70902 0,020



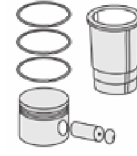
**Segman Seti**  
(Ring Set)

06-843500-00-STD  
06-843507-00 0,020

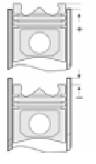
3.160 CRP KVI  
2.385 P STD  
4.747 CRP STD



**Silindir Gömleği**  
(Liner)



**Silindir Kit**  
(Assembly Set)



**Piston - Blok Montaj**  
Yüksekliği  
(Piston - Block  
Assembly Height)

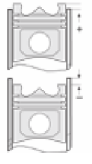
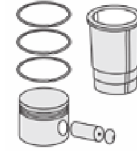
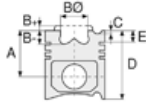
0,00/+0,50





FORD TRK - Ø 111,76

87-70873-STD



**Motor Özellikleri**  
(Engine Specifications)

İmalatçı (Manufacturer):  
FORD TRK  
Çap (Diameter): Ø 111,76  
FM Grup No: 3164

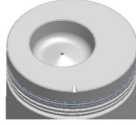
3 Sil. Dizel  
5000 SUPER TRK

4 Sil. Dizel

**Piston Ölçüleri**  
(Piston Dimensions)

A : 70.150  
B- : 22.860  
BØ : 56.130  
BX : 8.200  
BY : 2.700  
D : 129.000  
E : 19.880

Pim: 38,1 x 89,15



**Piston Özellikleri**  
(Piston Features)

Segman Taşıyıcı  
(Ring Carrier)  
Gözarası Düz  
(Flat Eye Gap)

**Piston Parça No**  
(Piston Part No)

87-202400-62  
87-70873-STD  
87-202407-62  
87-70873 0,020  
87-202409-62  
87-70873 0,030  
87-202411-62  
87-70873 0,040

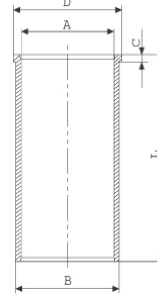
**Segman Seti**  
(Ring Set)

06-202400-20-STD  
06-202405-20 0,010 "  
06-202407-20 0,020 "  
06-202409-20 0,030 "  
06-202411-20 0,040 "

2.385 CR KV1  
2.385 CR STD  
2.385 STD  
4.740 CR STD

**Silindir Gömleği**  
(Liner)

14-020740-00-D  
B : 114.360  
L : 208.500  
D : 120.530  
C : 2.600



14-020741-00-D  
B : 115.960  
L : 208.500  
D : 120.530  
C : 2.600

Dış çap 1,55 mm farklı  
(Outside Diameter  
1,55 mm Different)

14-025330-00-D  
B : 115.920  
L : 210.000  
D : 117.120  
C : 6.300

**Silindir Kit**  
(Assembly Set)

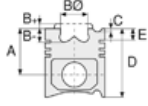
**Piston - Blok Montaj**  
Yüksekliği  
(Piston - Block  
Assembly Height)

+ 0,28 / + 0,58

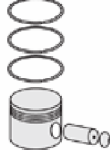




**Motor Özellikleri**  
(Engine Specifications)



**Piston Ölçüleri**  
(Piston Dimensions)



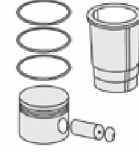
**Piston Parça No**  
(Piston Part No)



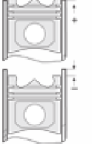
**Segman Seti**  
(Ring Set)



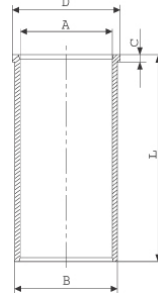
**Silindir Gömleği**  
(Liner)



**Silindir Kit**  
(Assembly Set)



**Piston - Blok Montaj**  
**Yüksekliği**  
(Piston - Block  
Assembly Height)



**Yüksek Flanşlı**  
(High Flange)

14-025331-00-D  
B : 116.920  
L : 210.000  
D : 118.120  
C : 6.300

Yüksek Flanşlı ve  
Dış Çap 1,00mm Farklı  
(High Flange and  
Outside Diameter  
1,00 mm Different)





FORD TRK - Ø 111,76

87-70849-STD

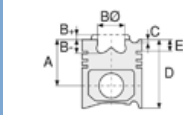


**Motor Özellikleri**  
(Engine Specifications)

İmalatçı (Manufacturer):  
FORD TRK  
Çap (Diameter): Ø 111,76  
FM Grup No: 3162

**BSD 333H, PD, 6Y, 7A**  
3 Sil. Dizel 3294cc  
38/44 Kw (52/60 PS)  
15,3/16,5:1  
4000, 4110, 4600,  
4610, 531, 532, 535,  
540, 545, 550, 555,  
TRAKTOR 515  
1968....

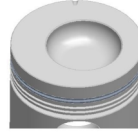
**BSD 444**  
4 Sil. Dizel 4392cc 16,3:1  
TRAKTOR 6610,  
TRAKTOR 6710  
1981 - 1987



**Piston Ölçüleri**  
(Piston Dimensions)

A : 68.070  
B- : 19.760  
BØ : 63.550  
BX : 5.800  
BY : 1.880  
D : 127.000  
E : 17.830

Pim: 38,1 x 89,15



**Piston Özellikleri**  
(Piston Features)

Segman Taşıyıcı  
(Ring Carrier)  
Gözarası Düz  
(Flat Eye Gap)



**Piston Parça No**  
(Piston Part No)

87-202400-22  
87-70849-STD  
87-202407-22  
87-70849 0,020  
87-202409-22  
87-70849 0,030  
87-202411-22  
87-70849 0,040



**Segman Seti**  
(Ring Set)

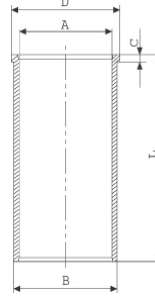
06-202400-20-STD  
06-202405-20 0,010 "  
06-202407-20 0,020 "  
06-202409-20 0,030 "  
06-202411-20 0,040 "

2.385 CR KV1  
2.385 CR STD  
2.385 CR STD  
4.740 CR STD



**Silindir Gömleği**  
(Liner)

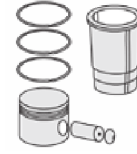
14-020740-00-D  
B : 114.360  
L : 208.500  
D : 120.530  
C : 2.600



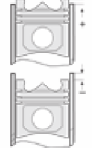
14-020741-00-D  
B : 115.960  
L : 208.500  
D : 120.530  
C : 2.600

Dış Çap 1,55 mm Farklı  
(Outside Diameter  
1,55 mm Different)

14-025330-00 D  
B : 115.920  
L : 210.000  
D : 117.120  
C : 6.300



**Silindir Kit**  
(Assembly Set)



**Piston - Blok Montaj**  
Yüksekliği  
(Piston - Block  
Assembly Height)

+ 0,28 / + 0,58



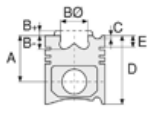


FORD TRK - Ø 111,76

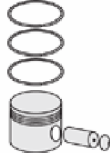
87-70849-STD



**Motor Özellikleri**  
(Engine Specifications)



**Piston Ölçüleri**  
(Piston Dimensions)



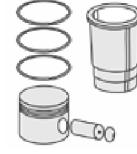
**Piston Parça No**  
(Piston Part No)



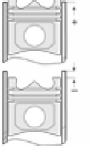
**Segman Seti**  
(Ring Set)



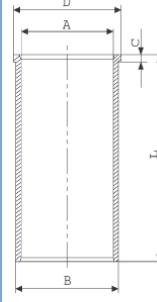
**Silindir Gömleği**  
(Liner)



**Silindir Kit**  
(Assembly Set)



**Piston - Blok Montaj**  
**Yüksekliği**  
(Piston - Block  
Assembly Height)



**Yüksek Flaşlı**  
(High Flange)

14-025331-00-D

B : 116.920

L : 210.000

D : 118.120

C : 6.300

Yüksek Flaşlı ve  
Dış Çap 1,00mm Farklı  
(High Flange and  
Outside Diameter  
1,00 mm Different)

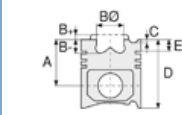




**Motor Özellikleri**  
(Engine Specifications)

İmalatçı (Manufacturer):  
FORD TRK  
Çap (Diameter): Ø 111,76  
FM Grup No: 3161

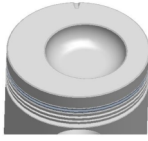
**6Y, 7A**  
4 Sil. Dizel 4195cc  
55/57/58 Kw  
(75/78/79 PS) 16,5:1  
3430, 3610, 3910,  
4100, 5000, 5500,  
5550, 5610, 6000,  
6500, 6600, 6700,  
CONBINE 620, CONBINE  
622, CONBINE 650,  
TRAKTOR 3230  
1975....



**Piston Ölçüleri**  
(Piston Dimensions)

A : 70.660  
B- : 18.620  
BØ : 63.500  
BX : 5.800  
BY : 1.880  
D : 129.500  
E : 20.380

Pim: 38,1 x 89,15



**Piston Özellikleri**  
(Piston Features)

Segman Taşıyıcı  
(Ring Carrier)  
Gözarası Düz  
(Flat Eye Gap)



**Piston Parça No**  
(Piston Part No)

87-202400-02  
87-70847-STD  
87-202407-02  
87-70847 0,020  
87-202409-02  
87-70847 0,030  
87-202411-02  
87-70847 0,040



**Segman Seti**  
(Ring Set)

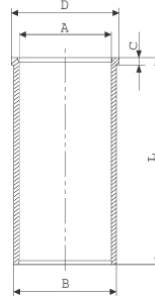
06-202400-20-STD  
06-202405-20 0,010 "  
06-202407-20 0,020 "  
06-202409-20 0,030 "  
06-202411-20 0,040 "

2.385 CR KV1  
2.385 CR STD  
2.385 STD  
4.740 CR STD



**Silindir Gömleği**  
(Liner)

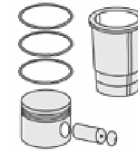
14-020740-00-D  
B : 114.360  
L : 208.500  
D : 120.530  
C : 2.600



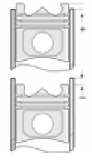
14-020741-00-D  
B : 115.960  
L : 208.500  
D : 120.530  
C : 2.600

Dış çap 1,55 mm farklı  
(Outside Diameter  
1,55 mm Different)

14-025330-00 D  
B : 115.920  
L : 210.000  
D : 117.120  
C : 6.300



**Silindir Kit**  
(Assembly Set)



**Piston - Blok Montaj**  
Yüksekliği  
(Piston - Block  
Assembly Height)

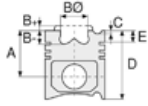
+ 0,18 / + 0,61



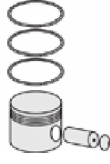




**Motor Özellikleri**  
(Engine Specifications)



**Piston Ölçüleri**  
(Piston Dimensions)



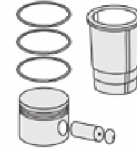
**Piston Parça No**  
(Piston Part No)



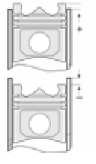
**Segman Seti**  
(Ring Set)



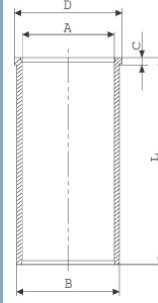
**Silindir Gömleği**  
(Liner)



**Silindir Kit**  
(Assembly Set)



**Piston - Blok Montaj**  
**Yüksekliği**  
(Piston - Block  
Assembly Height)



**Yüksek Flaşlı**  
(High Flange)

14-025331-00-D

B : 116.920

L : 210.000

D : 118.120

C : 6.300

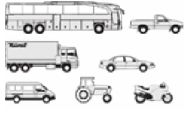
Yüksek Flaşlı ve  
Dış Çap 1,00mm Farklı  
(High Flange and  
Outside Diameter  
1,00 mm Different)





FORD TRK - Ø 106,68

87-70872-STD

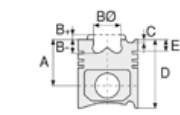


**Motor Özellikleri**  
(Engine Specifications)

İmalatçı (Manufacturer):  
FORD TRK  
Çap (Diameter): Ø 106,68  
FM Grup No: 3157

**3600**  
3 Sil. Dizel  
HEMA TRAKTOR

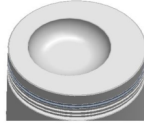
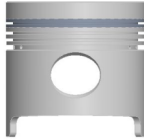
**3600**  
4 Sil. Dizel  
HEMA TRAKTOR



**Piston Ölçüleri**  
(Piston Dimensions)

A : 70.130  
B- : 17.120  
BØ : 63.550  
BX : 5.800  
BY : 1.900  
D : 129.010  
E : 19.400

Pim: 38,1 x 89,15



**Piston Özellikleri**  
(Piston Features)

Segman Taşıyıcı  
(Ring Carrier)  
Gözarası Düz  
(Flat Eye Gap)



**Piston Parça No**  
(Piston Part No)

87-208100-42  
87-70872-STD  
87-208107-42  
87-70872 0,020  
87-208109-42  
87-70872 0,030  
87-208111-42  
87-70872 0,040



**Segman Seti**  
(Ring Set)

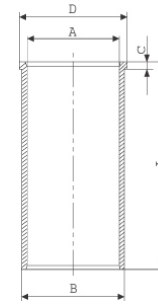
06-208100-20-STD  
06-208107-20 0,020 "  
06-208109-20 0,030 "  
06-208111-20 0,040 "

2.385 CR KVI  
2.385 CR STD  
2.385 STD  
4.747 CR STD



**Silindir Gömleği**  
(Liner)

14-020730-00-D  
B : 110.800  
L : 209.600  
D : 111.800  
C : 5.000

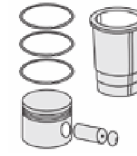


14-020731-10-D  
B : 111.300  
L : 209.600  
D : 112.300  
C : 5500.000

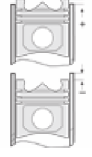
Dış çap 0,5 mm farklı  
(Outside Diameter  
0,50 mm Different)

14-020732-10-D  
B : 111.800  
L : 209.600  
D : 112.800  
C : 6.000

Dış çap 1,0 mm farklı  
(Outside Diameter  
1,00 mm Different)



**Silindir Kit**  
(Assembly Set)



**Piston - Blok Montaj**  
Yüksekliği  
(Piston - Block  
Assembly Height)

- 0,05 / - 0,15





**Motor Özellikleri**  
(Engine Specifications)

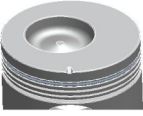
İmalatçı (Manufacturer):  
FORD TRK  
Çap (Diameter): Ø 106,68  
FM Grup No: 3156

**2502 E**  
3 Sil. Dizel 2589cc  
25/27/29,5 Kw  
(34/37/40 PS) 17:1  
TRAKTOR DEXTA  
2000, TRAKTOR  
DEXTA 2000A,  
TRAKTOR DEXTA  
2000DL, TRAKTOR  
DEXTA 2000S  
1965....

**Piston Ölçüleri**  
(Piston Dimensions)

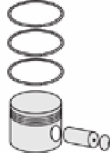
A : 75.230  
B- : 19.300  
BØ : 53.200  
BX : 8.200  
BY : 2.700  
D : 134.080  
E : 19.400

Pim: 38,1 x 89,15



**Piston Özellikleri**  
(Piston Features)

Segman Taşıyıcı  
(Ring Carrier)  
Gözarası Düz  
(Flat Eye Gap)



**Piston Parça No**  
(Piston Part No)

87-208100-22  
87-70870-STD  
  
87-208107-22  
87-70870 0,020  
  
87-208109-22  
87-70870 0,030  
  
87-208111-22  
87-70870 0,040



**Segman Seti**  
(Ring Set)

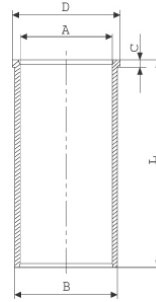
06-208100-20-STD  
06-208107-20 0,020 "  
06-208109-20 0,030 "  
06-208111-20 0,040 "

2.385 CR KV1  
2.385 CR STD  
2.385 STD  
4.747 CR STD



**Silindir Gömleği**  
(Liner)

14-020730-00-D  
B : 110.800  
L : 209.600  
D : 111.800  
C : 5.000

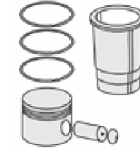


14-020731-10-D  
B : 111.300  
L : 209.600  
D : 112.300  
C : 5500.000

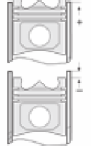
Dış çap 0,5 mm farklı  
(Outside Diameter  
0,50 mm Different)

14-020732-10-D  
B : 111.800  
L : 209.600  
D : 112.800  
C : 6.000

Dış çap 1,0 mm farklı  
(Outside Diameter  
1,00 mm Different)



**Silindir Kit**  
(Assembly Set)



**Piston - Blok Montaj**  
Yüksekliği  
(Piston - Block  
Assembly Height)

- 0,05 / - 0,15





**Motor Özellikleri**  
(Engine Specifications)

İmalatçı (Manufacturer):  
FORD TRK  
Çap (Diameter): Ø 106,68  
FM Grup No: 3155

**6Y, 7A, 2504E, 2508E**

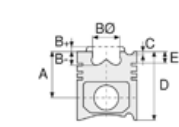
3 Sil. Dizel 2868cc  
32/34,5 Kw (44/47 PS)  
16,3:1/16,5:1

TRAKTÖR SUPER  
DEXTA 3000,  
TRAKTÖR SUPER  
DEXTA 333, TRAKTÖR  
SUPER DEXTA 353,  
TRAKTÖR SUPER  
DEXTA 3600  
1965....

**6Y, 7A**

4 Sil. Dizel 3818cc  
49,5/55 Kw (67/75 PS)  
16,3:1/16,5:1

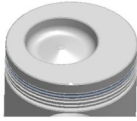
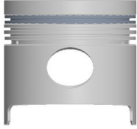
SÜPER MAJOR 5000,  
SÜPER MAJOR 5550,  
SÜPER MAJOR 5600  
1965....



**Piston Ölçüleri**  
(Piston Dimensions)

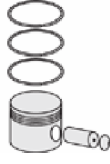
A : 70.150  
B- : 17.900  
BØ : 59.450  
BX : 8.200  
BY : 2.700  
D : 129.000  
E : 19.400

Pim: 38,1 x 89,15



**Piston Özellikleri**  
(Piston Features)

Segman Taşıyıcı  
(Ring Carrier)  
Gözarası Düz  
(Flat Eye Gap)



**Piston Parça No**  
(Piston Part No)

87-208100-02  
87-70869-STD

87-208107-02  
87-70869 0,020

87-208109-02  
87-70869 0,030

87-208111-02  
87-70869 0,040



**Segman Seti**  
(Ring Set)

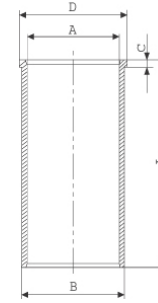
06-208100-20-STD  
06-208107-20 0,020 "  
06-208109-20 0,030 "  
06-208111-20 0,040 "

2.385 CR KVI  
2.385 CR STD  
2.385 STD  
4.747 CR STD



**Silindir Gömleği**  
(Liner)

14-020730-00-D  
B : 110.800  
L : 209.600  
D : 111.800  
C : 5.000

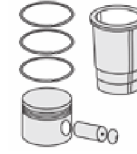


14-020731-10-D  
B : 111.300  
L : 209.600  
D : 112.300  
C : 5500.000

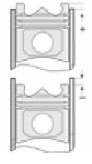
Dış Çap 0,5 mm Farklı  
(Outside Diameter  
0,50 mm different)

14-020732-10-D  
B : 111.800  
L : 209.600  
D : 112.800  
C : 6.000

Dış Çap 1,0 mm Farklı  
(Outside Diameter  
1,00 mm different)



**Silindir Kit**  
(Assembly Set)



**Piston - Blok Montaj**  
Yüksekliği  
(Piston - Block  
Assembly Height)

- 0,05 / - 0,15

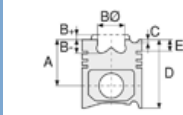




**Motor Özellikleri**  
(Engine Specifications)

İmalatçı (Manufacturer):  
FORD LKW  
Çap (Diameter): Ø 104,77  
FM Grup No: 3050

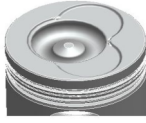
**DOVER 6.0 TCI**  
6 Sil. Dizel 5946cc  
185 PS  
Turbo Intercooled  
CARGO 2520  
1992....



**Piston Ölçüleri**  
(Piston Dimensions)

A : 71.250  
B - : 21.500  
BØ : 55.000  
BX : 5.000  
C1 : 2.300  
D : 119.900  
E : 18.300

Pim: 41 x 87,12



**Piston Özellikleri**  
(Piston Features)

Segman Taşıyıcı  
(Ring Carrier)  
Sert Anotlama  
(Hard Anodizing)  
Gözarası Konik  
(Conical Eye Gap)



**Piston Parça No**  
(Piston Part No)

87-843000-23  
7-70909-STD1C  
0,20 mm Kısa  
(Short)

87-843000-24  
87-70909-STD2C  
0,40 mm Kısa  
(Short)

87-843000-22  
87-70909-STD

87-835800-33  
87-70909-STD1F  
0,20 mm kısa  
(short)

87-835800-34  
87-70909-STD2F  
0,40 mm Kısa  
(Short)

87-835800-32  
87-70909-STD



**Segman Seti**  
(Ring Set)

06-843000-00-STD  
3.000 PSP KV1  
2.500 P STD  
4.000 P IKA

Goetze® LKZ-Ring®

06-835800-80-STD

3.000 CK KV1  
2.500 STD  
4.000 CR STD

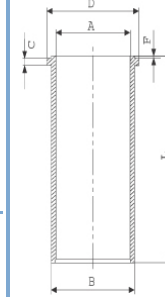
İçi Krom Kaplı Gömlekte  
Kullanılmaz / (Inside  
Chrome Plated Not Used  
on Shirts)

Goetze® LKZ-Ring®



**Silindir Gömleği**  
(Liner)

14-040301-00-DH  
B : 108.975  
L : 218.507  
D : 112.586  
C : 4.737  
F : 0.700



İçi Krom Kaplı No 1  
(Inside Chrome Plated  
No 1)

14-040302-00-DH  
B : 108.988  
L : 218.507  
D : 112.586  
C : 4.737  
F : 0.700

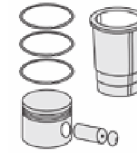
İçi Krom Kaplı No 2  
(Inside Chrome Plated  
No 2)

14-040303-00-DH  
B : 109.001  
L : 218.507  
D : 112.586  
C : 4.737  
F : 0.700

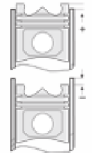
İçi Krom Kaplı No 3  
(Inside Chrome Plated  
No 3)

14-040304-00-DH  
B : 109.014  
L : 218.507  
D : 112.586  
C : 4.737  
F : 0.700

İçi Krom Kaplı No 4  
(Inside Chrome Plated  
No 4)



**Silindir Kit**  
(Assembly Set)



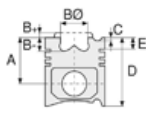
**Piston - Blok Montaj**  
Yüksekliği  
(Piston - Block  
Assembly Height)

+0,30/+0,40

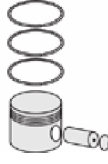




**Motor Özellikleri**  
(Engine Specifications)



**Piston Ölçüleri**  
(Piston Dimensions)



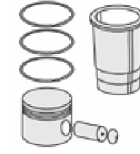
**Piston Parça No**  
(Piston Part No)



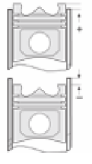
**Segman Seti**  
(Ring Set)



**Silindir Gömleği**  
(Liner)



**Silindir Kit**  
(Assembly Set)



**Piston - Blok Montaj**  
Yüksekliği  
(Piston - Block  
Assembly Height)

14-040305-00-DH  
B : 109.177  
L : 218.507  
D : 112.586  
C : 4.737  
F : 0.700

İçi Krom Kaplı No 5  
(Inside Chrome Plated  
No 5)

14-040306-00-DH  
B : 109.305  
L : 218.507  
D : 112.586  
C : 4.737  
F : 0.700

İçi Krom Kaplı No 6  
(Inside Chrome Plated  
No 6)

14-040307-00-DH  
B : 109.433  
L : 218.507  
D : 112.586  
C : 4.737  
F : 0.700

İçi Krom Kaplı No 7  
(Inside Chrome Plated  
No 7)

14-040308-00-DH  
B : 109.561  
L : 218.507  
D : 112.586  
C : 4.737  
F : 0.700

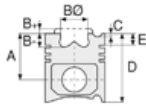
İçi Krom Kaplı No 8  
(Inside Chrome Plated  
No 8)

14-041950-00-D  
B : 109.050  
L : 218.510  
D : 112.586  
C : 4.737  
F : 0.700





**Motor Özellikleri**  
(Engine Specifications)



**Piston Ölçüleri**  
(Piston Dimensions)



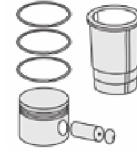
**Piston Parça No**  
(Piston Part No)



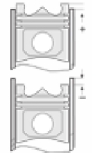
**Segman Seti**  
(Ring Set)



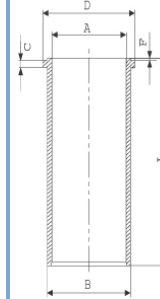
**Silindir Gömleği**  
(Liner)



**Silindir Kit**  
(Assembly Set)



**Piston - Blok Montaj**  
**Yüksekliği**  
(Piston - Block  
Assembly Height)



14-041954-00-D  
B : 109.300  
L : 218.510  
D : 112.586  
C : 4.737  
F : 0.700

Dış Çap 0,25mm Farklı  
(Outside Diameter  
0,25 mm Different)

14-041955-00-D  
B : 109.550  
L : 218.510  
D : 112.586  
C : 4.737  
F : 0.700

Dış Çap 0,50mm Farklı  
(Outside Diameter  
0,50 mm Different)

14-041956-00-D  
B : 110.050  
L : 218.510  
D : 113.000  
C : 5.000  
F : 0.700

Dış Çap 1,00mm Farklı  
(Outside Diameter  
1,00 mm Different)

14-041957-00-D  
B : 109.100  
L : 218.510  
D : 112.586  
C : 4.737  
F : 0.700

Dış Çap 0,05mm Farklı  
(Outside Diameter  
0,05 mm Different)

