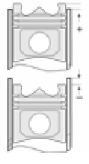




HATZ - Ø 80

87-71005-STDA



Motor Özellikleri
(Engine Specifications)

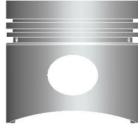
İmalatçı (Manufacturer):
HATZ
Çap (Diameter): Ø 80
FM Grup No: 3302

**E80, E80G, E80FG,
E80FC**
1 Sil. Dizel 500cc 4,4
Kw (6 PS)
1953...

Piston Ölçüleri
(Piston Dimensions)

A : 56.000
D : 92.000
E : 14.000

Pim : 30 x 66



Piston Özellikleri
(Piston Features)

Çelik Plaka
(Steel Strut)
Gözarası Düz
(Flat Eye Gap)

Piston Parça No
(Piston Part No)

87-228700-02
87-71005-STDA

87-228707-02
87-71005-050A

87-228711-02
87-71005-100A

87-076160-02
87-71005-STDB

87-076167-02
87-71005-050B

87-076171-02
87-71005-100B

Segman Seti
(Ring Set)

06-228700-00-STD
06-228707-00-0,50 mm
06-228711-00-1,00 mm

2.500 CRP STD
2.500 P STD
4.000 CRP STD

06-076160-00-STD
06-076167-00-0,50 mm
06-076171-00-1,00 mm

2.500 CRP STD
2.500 P STD
4.000 P STD

Silindir Gömleği
(Liner)

Silindir Kit
(Assembly Set)

Piston - Blok Montaj
Yüksekliği
(Piston - Block
Assembly Height)

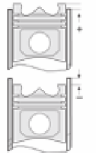
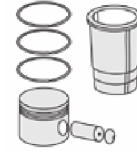
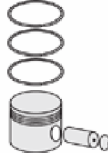
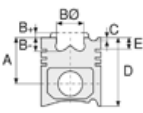
0,80 / 0,90





HATZ - Ø 90

87-71012-STDA



Motor Özellikleri
(Engine Specifications)

İmalatçı (Manufacturer):
HATZ
Çap (Diameter): Ø 90
FM Grup No: 3303

E 89/FG/FL/G

1 Sil. Dizel 668cc 7,3/8,8
Kw (10/12 PS)
H 113 TRK, TL11 / 13 TRK
1965...

Piston Ölçüleri
(Piston Dimensions)

A : 53.500
B - : 28.000
BX : 21.000
D : 103.500
E : 12.500

Pim : 30 x 78



Piston Özellikleri
(Piston Features)

Çelik Plaka
(Steel Strut)
Gözarası Düz
(Flat Eye Gap)

Piston Parça No
(Piston Part No)

87-228900-02
87-71012-STDA
87-228907-02
87-71012-050A
87-228911-02
87-71012-100A

87-076360-02
87-71012-STDB

87-076367-02
87-71012-050B

87-076371-02
87-71012-100B

87-076374-02
87-71012-150B

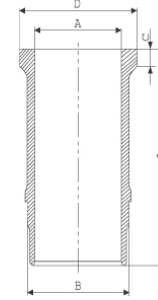
Segman Seti
(Ring Set)

06-228900-00-STD
06-228907-00 0,50 mm
06-228911-00 1,00 mm
3.000 CRP STD
3.000 P STD
5.000 CRP STD

06-076360-00-STD
06-076367-00-0,50 mm
06-076371-00-1,00 mm
06-076374-00-1,50 mm
3.000 CRP STD
3.000 P STD
5.000 P STD

Silindir Gömleği
(Liner)

14-633760-10-WH
B : 104.000
L : 197.000
D : 115.000
C : 165.000



Silindir Kit
(Assembly Set)

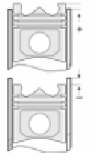
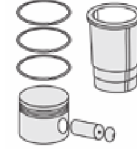
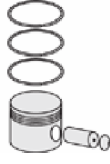
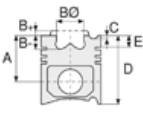
Piston - Blok Montaj
Yüksekliği
(Piston - Block
Assembly Height)





HATZ - Ø 90

87-71712-STDA



Motor Özellikleri
(Engine Specifications)

İmalatçı (Manufacturer):
HATZ
Çap (Diameter): Ø 90
FM Grup No: 6801

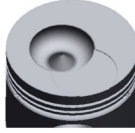
PANCAR MOTOR 5
(Beet Engine 5)

1 Sil. Dizel 15 PS
Hava Soğutmalı (Air Cooled)
Pancar Motor Su Pompası
(Beet Engine Water Pump),
SU MOTORU (Water Engine)

Piston Ölçüleri
(Piston Dimensions)

A : 53.500
B - : 20.800
B0 : 43.800
BX : 7.000
C1 : 0.850
D : 103.500
E : 12.500

Pim : 30 x 78



Piston Özellikleri
(Piston Features)

Çelik Plaka
(Steel Strut)
Gözarası Düz
(Flat Eye Gap)

Piston Parça No
(Piston Part No)

87-228900-2
87-71712-STDA

87-228907-22
87-71712-050A

87-228911-22
87-71712-100A

87-076360-22
87-71712-STDB

87-076367-22
87-71712-050B

87-076371-22
87-71712-100B

Segman Seti
(Ring Set)

06-228900-00-STD
06-228907-00-0,50 mm
06-228911-00-1,00 mm

3.000 CRP STD
3.000 P STD
5.000 CRP STD

06-076360-00-STD
06-076367-00-0,50 mm
06-076371-00-1,00 mm
06-076374-00-1,50 mm

3.000 CRP STD
3.000 P STD
5.000 P STD

Silindir Gömleği
(Liner)

Silindir Kit
(Assembly Set)

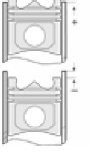
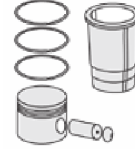
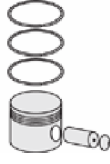
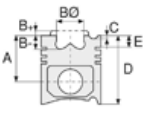
Piston - Blok Montaj
Yüksekliği
(Piston - Block
Assembly Height)





HATZ - Ø 102

87-71714-STDA



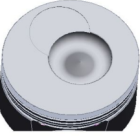
Motor Özellikleri
(Engine Specifications)

İmalatçı (Manufacturer):
HATZ
Çap (Diameter): Ø 102
FM Grup No: 3309

PM18M
1 Sil. Dizel 858cc 14,4
Kw (19,6 Ps) 18, 8:1

Piston Ölçüleri
(Piston Dimensions)

A : 58.500
B- : 20.000
BØ : 46.750
BX : 7.000
C1 : 0.850
D : 108.500
E : 12.500
Pim : 30 x 85



Piston Özellikleri
(Piston Features)

Çelik Plaka
(Steel Strut)
Gözarası Düz
(Flat Eye Gap)

Piston Parça No
(Piston Part No)

87-174600-22
87-71714-STDA
87-174607-22
87-71714-050A
87-174611-22
87-71714-100A

Segman Seti
(Ring Set)

06-174600-80-STD
06-174607-80-0,50 mm
06-174611-80-1,00 mm
3.000 CK KV1
2.500 STD
2.500 STD
5.000 CR STD
Goetze® LKZ-Ring®

Silindir Gömleği
(Liner)

Silindir Kit
(Assembly Set)

Piston - Blok Montaj
Yüksekliği
(Piston - Block
Assembly Height)





HATZ - Ø 108

87-71016-STD



Motor Özellikleri
(Engine Specifications)

İmalatçı (Manufacturer):
HATZ
Çap (Diameter): Ø 108
FM Grup No: 3305

E108

1 Sil. Dizel 1010cc 13/14,5
Kw (18/20 PS) 17, 5:1
Pancar Motor Su Pompası
(Beet Engine Water Pump)
1970...

Z108

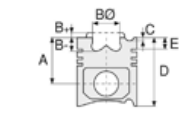
2 Sil. Dizel 2010cc 26,5/29,5
Kw (36/40 PS) 17, 5:1
1970...

D108

3 Sil. Dizel 3020cc 34,5/44
Kw (54/60 PS) 17, 5:1
1970...

V108

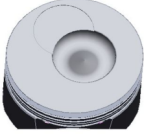
4 Sil. Dizel 4030cc 53/59
Kw (72/80 PS) 17, 5:1
1970...



Piston Ölçüleri
(Piston Dimensions)

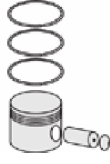
A : 71.000
B - : 20.000
BØ : 60.000
BX : 6.000
BY : 3.000
C1 : 0.900
D : 109.000
E : 16.000

Pim : 35 x 85



Piston Özellikleri
(Piston Features)

Çelik Plaka
(Steel Strut)
Gözarası Düz
(Flat Eye Gap)



Piston Parça No
(Piston Part No)

87-076460-02
87-71016-STD

87-076407-02
87-71016-050

87-076411-02
87-71016-100

87-804000-02
87-71016-STD B

87-804007-02
87-71716-050 B

87-804011-02
87-71716-100 B



Segman Seti
(Ring Set)

06-076460-00-STD

3.000 CRP STD
3.000 P STD
3.000 P STD
5.000 CRP STD

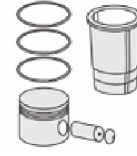
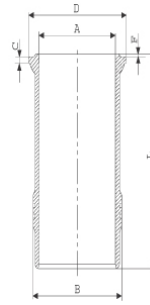
06-804000-00-STD
06-804007-00-0,50 mm
06-804011-00-1,00 mm

3.000 CRP STD
3.000 P STD
3.000 P STD
5.000 CRP STD

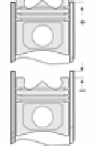


Silindir Gömleği
(Liner)

14-265190-01-WH
B : 121.000
L : 207.400
D : 127.700
C : 7.100
F : 1.400



Silindir Kit
(Assembly Set)



Piston - Blok Montaj
Yüksekliği
(Piston - Block
Assembly Height)

+1,10 / +1,30

