



HINO - Ø 80

87-71080-STD

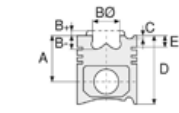


**Motor Özellikleri**  
(Engine Specifications)

İmalatçı (Manufacturer):  
HINO  
Çap (Diameter): Ø 80  
FM Grup No: 3507

**KOMPRESOR**

2 Sil. JO8 Kompresör  
(Compressor)



**Piston Ölçüleri**  
(Piston Dimensions)

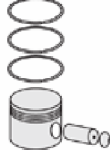
A : 29.500  
D : 60.500  
E : 4.000

Pim : 16 x 70,8



**Piston Özellikleri**  
(Piston Features)

Gözarası Düz  
(Flat Eye Gap)



**Piston Parça No**  
(Piston Part No)

87-846700-02  
87-71080-STD



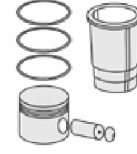
**Segman Seti**  
(Ring Set)

06-846700-00-STD

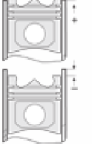
3.000 CRP GOE  
3.000 P STD  
3.000 P STD  
4.000 CRP STD



**Silindir Gömleği**  
(Liner)



**Silindir Kit**  
(Assembly Set)



**Piston - Blok Montaj**  
Yüksekliği  
(Piston - Block  
Assembly Height)





HINO - Ø 104

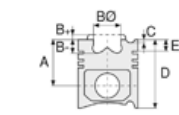
87-71083-STD



**Motor Özellikleri**  
(Engine Specifications)

İmalatçı (Manufacturer):  
HINO  
Çap (Diameter): Ø 104  
FM Grup No: 3501

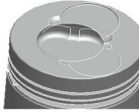
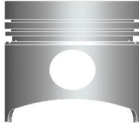
**W 04 D**  
4 Sil. Dizel 4009cc 81,6  
Kw (111 PS) 17, 9:1  
FB 110, FB 112



**Piston Ölçüleri**  
(Piston Dimensions)

A : 60.250  
B- : 19.250  
BØ : 51.500  
BX : 5.200  
BY : 2.250  
C1 : 0.700  
C2 : 1.750  
D : 106.150  
E : 16.200

Pim : 35 x 85



**Piston Özellikleri**  
(Piston Features)

Gözarası Konik  
(Conical Eye Gap)



**Piston Parça No**  
(Piston Part No)

87-846900-02  
87-71083-STD



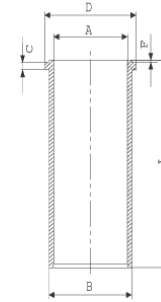
**Segman Seti**  
(Ring Set)

06-846900-10-STD  
2.500 CRP KV1  
2.000 P STD  
5.000 CRP STD

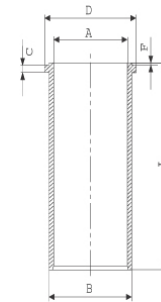


**Silindir Gömleği**  
(Liner)

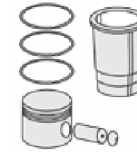
14-040020-00-D  
B : 107.075  
L : 201.000  
D : 112.300  
C : 8.200  
F : 0.700



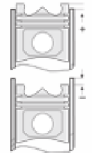
14-040070-00-DH  
B : 106.960  
L : 200.900  
D : 112.000  
C : 8.030  
F : 0.700



Dış Yüzeyi Fosfat Kaplı  
(Outer Surface  
Phosphate Coated)



**Silindir Kit**  
(Assembly Set)



**Piston - Blok Montaj**  
Yüksekliği  
(Piston - Block  
Assembly Height)

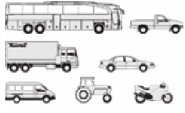
+0,30 / +0,50





HINO - Ø 114

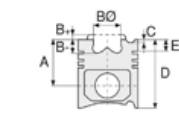
87-71090-STD



**Motor Özellikleri**  
(Engine Specifications)

İmalatçı (Manufacturer):  
HINO  
Çap (Diameter): Ø 114  
FM Grup No: 3504

Jo8  
6 Sil. Dizel 7961cc  
19.235, 19.260, 26.235,  
26.260, 32.235, 32.260  
1996...



**Piston Ölçüleri**  
(Piston Dimensions)

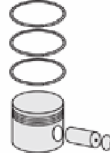
A : 57.000  
B- : 18.200  
BØ : 65.100  
D : 100.000  
E : 12.800

Pim : 37 x 85



**Piston Özellikleri**  
(Piston Features)

Segman Taşıyıcı  
(Ring Carrier)  
Soğutma Kanallı  
(Cooling Gallery)  
Yağ Püskürtme Oyuğu  
(Oil Jet Cut-Out)  
Burçlu Piston  
(Bushing Piston)  
Gözarası Konik  
(Conical Eye Gap)



**Piston Parça No**  
(Piston Part No)

87-847700-22  
87-71090-STD  
87-847700-23  
87-71090-STD1  
0,20 mm Kısa (Short)



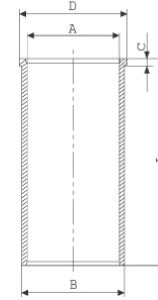
**Segman Seti**  
(Ring Set)

06-847700-10-STD  
2.500 NT ST  
2.000 NT ST  
4.000 NT ST



**Silindir Gömleği**  
(Liner)

14-020270-00-DH  
B : 117.000  
L : 203.000  
D : 122.000  
C : 8.050



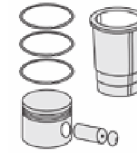
Dış çap gruplu, Dış çap fosfat kaplı  
(Outer diameter group, Outer diameter phosphate coated)

14-020271-00-DH  
B : 117.250  
L : 203.000  
D : 122.000  
C : 8.050

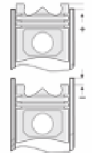
Dış Çap 0,25 mm Farklı  
(Outer Diameter 0,25 mm Different)

14-020272-00-DH  
B : 117.500  
L : 203.000  
D : 122.000  
C : 8.200

Dış Çap 0,50 mm. Farklı  
(Outer Diameter 0,50 mm. Different)



**Silindir Kit**  
(Assembly Set)



**Piston - Blok Montaj**  
Yüksekliği  
(Piston - Block Assembly Height)

+0,45 / +0,55



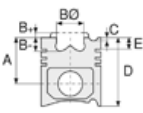


HINO - Ø 114

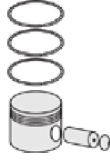
87-71090-STD



**Motor Özellikleri**  
(Engine Specifications)



**Piston Ölçüleri**  
(Piston Dimensions)



**Piston Parça No**  
(Piston Part No)

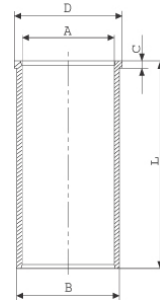


**Segman Seti**  
(Ring Set)



**Silindir Gömleği**  
(Liner)

14-022090-00-D  
B : 117.250  
L : 205.000  
D : 122.500  
C : 9.000



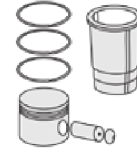
Semi Finish

14-022091-00-D  
B : 117.500  
L : 205.000  
D : 122.500  
C : 9.000

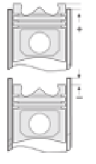
Dış Çap 0,25 mm Farklı  
(Outer Diameter  
0,25 mm Different)

14-022092-00-D  
B : 117.750  
L : 205.000  
D : 122.500  
C : 9.000

Dış Çap 0,50 mm Farklı  
(Outside Diameter  
0,50 mm Different)



**Silindir Kit**  
(Assembly Set)



**Piston - Blok Montaj**  
Yüksekliği  
(Piston - Block  
Assembly Height)





HINO - Ø 137

14-459950-00-WH

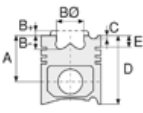


**Motor Özellikleri**  
(Engine Specifications)

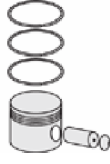
İmalatçı (Manufacturer):  
HINO  
Çap (Diameter): Ø 137  
FM Grup No: 3506

**EK 100**

6 Sil. Dizel 13267cc 17, 9:1  
FH 270, FN 274, FN 278,  
FN 288, FP 270, FP 274,  
FR 270, FR 274, FW 274,  
FY 271KA, FY 275KA  
1981 - 1990



**Piston Ölçüleri**  
(Piston Dimensions)



**Piston Parça No**  
(Piston Part No)

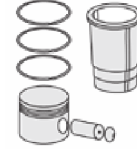
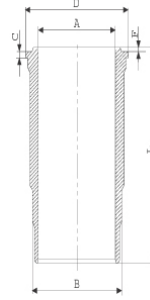


**Segman Seti**  
(Ring Set)

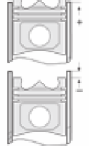


**Silindir Gömleği**  
(Liner)

14-459950-00-WH  
B: 152.975  
L: 268.000  
D: 163.925  
C: 12.075  
F: 1.050



**Silindir Kit**  
(Assembly Set)



**Piston - Blok Montaj**  
Yüksekliği  
(Piston - Block  
Assembly Height)

