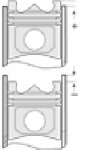
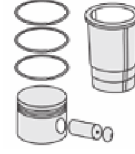




HONDA - Ø 75

87-71105-STD



Motor Özellikleri
(Engine Specifications)

İmalatçı (Manufacturer):
HONDA
Çap (Diameter): Ø 75
FM Grup No: 3620

D 16
4 Sil. Benzinli 1600cc
78-96Kw/106-131Hp
Civic 1.6
1996 - 2001

Piston Ölçüleri
(Piston Dimensions)

A : 30.000
B - : 3.470
BØ : 63.630
C1 : 2.000
C2 : 3.600
D : 50.000
E : 6.000

Pim : 19 x 56



Piston Özellikleri
(Piston Features)

Biyel Koluna Sıkı Geçme
(Close-Fit To Connecting Rod)
Gözarası Konik
(Conical Eye Gap)

Piston Parça No
(Piston Part No)

87-859400-02
87-71105-STD
87-859407-02
87-71105-0,50

Segman Seti
(Ring Set)

06-859400-50-STD
06-859407-50-0,50 mm
1.000 CR ST
1.200 P GOE
2.850 CR ST

Silindir Gömleği
(Liner)

Silindir Kit
(Assembly Set)

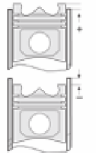
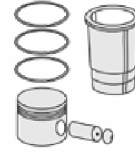
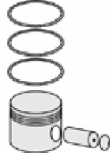
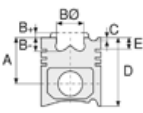
Piston - Blok Montaj
Yüksekliği
(Piston - Block
Assembly Height)





HONDA - Ø 75

87-71106-STD



Motor Özellikleri
(Engine Specifications)

İmalatçı (Manufacturer):
HONDA
Çap (Diameter): Ø 75
FM Grup No: 3621

D16 VTEC
4 Sil. Benzinli 1600cc
Civic 1.6
2001 - 2006

Piston Ölçüleri
(Piston Dimensions)

A : 29.200
B - : 0.830
C1 : 0.630
D : 48.900
E : 6.000

Pim : 19 x 56






Piston Özellikleri
(Piston Features)

Biyel Koluna Sıkı Geçme
(Close-Fit To Connecting Rod)

Piston Parça No
(Piston Part No)

87-859600-02
87-71106-STD
87-859607-02
87-71106-0,50

Segman Seti
(Ring Set)

06-859600-50-STD
06-859607-50-0,50 mm
1.000  P ST
1.200  P GOE
2.000  CR ST

Silindir Gömleği
(Liner)

Silindir Kit
(Assembly Set)

Piston - Blok Montaj
Yüksekliği
(Piston - Block
Assembly Height)

