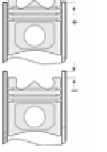
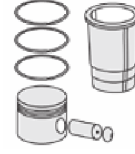
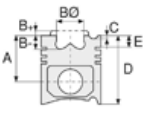




IFA - Ø 70

87-71140-STD



**Motor Özellikleri**  
(Engine Specifications)

İmalatçı (Manufacturer):  
IFA  
Çap (Diameter): Ø 70  
FM Grup No: 3701

**KOMPRESOR**  
1 Sil. Dizel KOMPRESOR

**Piston Ölçüleri**  
(Piston Dimensions)

A : 32.150  
D : 63.000  
E : 3.100  
Pim : 15 x 60



**Piston Özellikleri**  
(Piston Features)

Gözarası Düz  
(Flat Eye Gap)

**Piston Parça No**  
(Piston Part No)

87-248200-02  
87-71140-STD  
87-248207-02  
87-71140-050  
87-248211-02  
87-71140-100

**Segman Seti**  
(Ring Set)

06-248200-00-STD  
06-248207-00-0,50 mm  
06-248211-00-1,00 mm  
2.500 P STD  
2.500 P STD  
4.000 P STD  
4.000 P STD

**Silindir Gömleği**  
(Liner)

**Silindir Kit**  
(Assembly Set)

**Piston - Blok Montaj**  
Yüksekliği  
(Piston - Block  
Assembly Height)





IFA - Ø 120

06-810800-00-STD

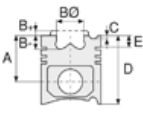


**Motor Özellikleri**  
(Engine Specifications)

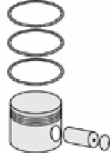
İmalatçı (Manufacturer):  
IFA

Çap (Diameter): Ø 120  
FM Grup No: 3704

4 VD 14.5  
4 Sil. Dizel 6600cc 92  
KW-125 PS 18:1  
E 512, E 514,  
W50 TRAKTÖR (TRACTOR)  
1976...



**Piston Ölçüleri**  
(Piston Dimensions)




**Piston Parça No**  
(Piston Part No)



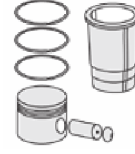
**Segman Seti**  
(Ring Set)

06-810800-00-STD

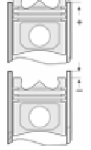
3.000  CRP STD  
3.000  P STD  
5.000  CRP STD  
5.000  CRP STD



**Silindir Gömleği**  
(Liner)



**Silindir Kit**  
(Assembly Set)



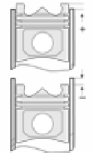
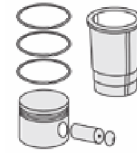
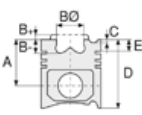
**Piston - Blok Montaj**  
Yüksekliği  
(Piston - Block  
Assembly Height)





IFA - Ø 120

87-71145-STD



**Motor Özellikleri**  
(Engine Specifications)

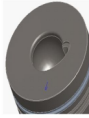
İmalatçı (Manufacturer):  
IFA  
Çap (Diameter): Ø 120  
FM Grup No: 3702

4 VD 14.5  
4 Sil. Dizel 6600cc  
W50 TRAKTÖR (TRACTOR)  
1962 - 1965

**Piston Ölçüleri**  
(Piston Dimensions)

A : 95.000  
B- : 45.500  
BØ : 45.650  
D : 138.000  
E : 20.200

Pim : 45 x 96



**Piston Özellikleri**  
(Piston Features)

Segman Taşıyıcı  
(Ring Carrier)  
Gözarası Düz  
(Flat Eye Gap)

**Piston Parça No**  
(Piston Part No)

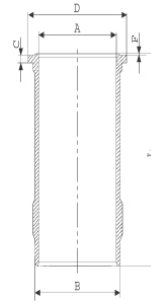
87-246900-02  
87-71145-STD  
87-246907-02  
87-71145-0,50

**Segman Seti**  
(Ring Set)

06-246900-00-STD  
06-246907-00-0,50 mm  
3.000 CRP STD  
3.000 P STD  
5.000 CRP STD

**Silindir Gömleği**  
(Liner)

14-378270-00  
B : 134.500  
L : 287.000  
D : 140.000  
C : 10.000  
F : 1.000



Dış Yüzeyi Fosfat Kaplı  
(Outer Surface  
Phosphate Coated)

**Silindir Kit**  
(Assembly Set)

88-246900-02-STD  
88-71145-STD

**Piston - Blok Montaj**  
Yüksekliği  
(Piston - Block  
Assembly Height)

