



IHC - Ø 52

06-246800-00-STD

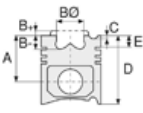


Motor Özellikleri
(Engine Specifications)

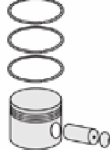
İmalatçı (Manufacturer):
IHC
Çap (Diameter): Ø 52
FM Grup No: 3801

KOMPRESOR

1 Sil. Dizel MIDLAND D358







Piston Ölçüleri
(Piston Dimensions)

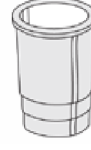


Piston Parça No
(Piston Part No)

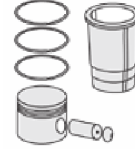


Segman Seti
(Ring Set)

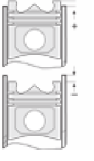
06-246800-00-STD
06-246807-00-0,50 mm
2.500  P STD
2.500  P STD
2.500  P STD
4.000  P STD



Silindir Gömleği
(Liner)



Silindir Kit
(Assembly Set)



Piston - Blok Montaj
Yüksekliği
(Piston - Block
Assembly Height)





IHC - Ø 88,9

87-71192-STD

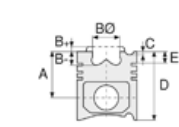


Motor Özellikleri
(Engine Specifications)

İmalatçı (Manufacturer):
IHC
Çap (Diameter): Ø 88,9
FM Grup No: 3802

BD 154

4 Sil. Dizel 2520cc 26,5
Kw (36 PS) TRAKTOR 238,
TRAKTÖR (TRACTOR) 2424,
TRAKTÖR (TRACTOR) 2444,
TRAKTÖR (TRACTOR) 364,
TRAKTÖR (TRACTOR) 414,
TRAKTÖR (TRACTOR) 434,
TRAKTÖR (TRACTOR) 444,
TRAKTÖR (TRACTOR) 7000
1963...



Piston Ölçüleri
(Piston Dimensions)

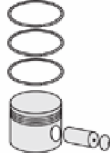
A : 50.900
D : 99.000
E : 11.500

Pim : 28 x 76,8



Piston Özellikleri
(Piston Features)

Gözarası Düz
(Flat Eye Gap)



Piston Parça No
(Piston Part No)

87-245900-02
87-71192-STD



Segman Seti
(Ring Set)

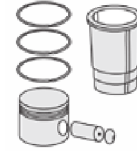
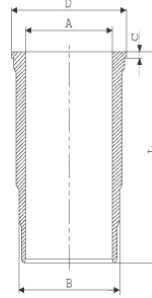
06-245900-10-STD

2.385 CRP STD
2.385 P STD
2.385 P STD
4.747 CRP STD
4.747 P STD



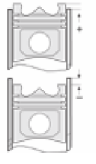
Silindir Gömleği
(Liner)

14-440260-00-WH
B : 93.690
L : 185.700
D : 101.500
C : 5.770



Silindir Kit
(Assembly Set)

88-245900-02-STD
88-71192-STD



Piston - Blok Montaj
Yüksekliği
(Piston - Block
Assembly Height)

- 0,08 / + 0,28

