



IVECO LKW - Ø 82

06-844000-20-STD



**Motor Özellikleri**  
(Engine Specifications)

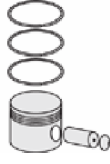
İmalatçı (Manufacturer):  
IVECO LKW  
Çap (Diameter): Ø 82  
FM Grup No: 4076

**KOMPRESOR**  
(COMPRESSOR)



**Piston Ölçüleri**  
(Piston Dimensions)

**Piston Özellikleri**  
(Piston Features)



**Piston Parça No**  
(Piston Part No)



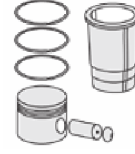
**Segman Seti**  
(Ring Set)

06-844000-20-STD  
06-844000-20 0,50 mm  
06-844007-20 0,75 mm

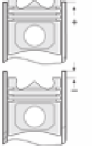
1.500  STD  
1.500  STD  
3.000  STD



**Silindir Gömleği**  
(Liner)



**Silindir Kit**  
(Assembly Set)



**Piston - Blok Montaj**  
Yüksekliği  
(Piston - Block  
Assembly Height)





IVECO LKW - Ø 82

06-844100-20-STD

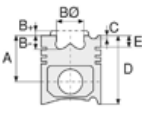


**Motor Özellikleri**  
(Engine Specifications)

İmalatçı (Manufacturer):  
IVECO LKW  
Çap (Diameter): Ø 82  
FM Grup No: 4075

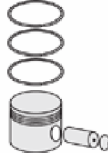
**KOMPRESOR**

2 Sil.  
EURO TRAKKER 370,  
EURO TRAKKER 420



**Piston Ölçüleri**  
(Piston Dimensions)

**Piston Özellikleri**  
(Piston Features)



**Piston Parça No**  
(Piston Part No)



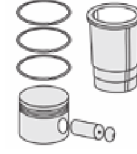
**Segman Seti**  
(Ring Set)

06-844100-20-STD  
06-844105-20 0,25 mm  
06-844107-20 0,50 mm  
06-844109-20 0,75 mm

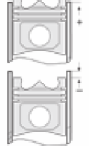
2.500  STD  
2.500  STD  
4.000  STD



**Silindir Gömleği**  
(Liner)



**Silindir Kit**  
(Assembly Set)



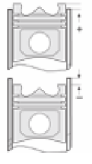
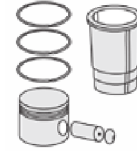
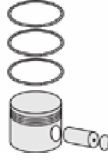
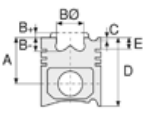
**Piston - Blok Montaj**  
Yüksekliği  
(Piston - Block  
Assembly Height)





IVECO LKW - Ø 82

87-72857-STD



**Motor Özellikleri**  
(Engine Specifications)

İmalatçı (Manufacturer):  
IVECO LKW  
Çap (Diameter): Ø 82  
FM Grup No: 4066

8210.42 Kompresör  
2 Sil.  
Eurostar, Eurotrakker

**Piston Ölçüleri**  
(Piston Dimensions)

A : 28.050  
D : 52.000  
E : 4.000  
Pim: 14 x 72






**Piston Özellikleri**  
(Piston Features)

Yağ Püskürtme Oyuğu  
(Oil Jet Cut-out)  
Gözarası Düz  
(Flat Eye Gap)

**Piston Parça No**  
(Piston Part No)

87-844100-22  
87-72857-STD  
87-844105-22  
87-72857 0,25  
87-844107-22  
87-72857 0,50

**Segman Seti**  
(Ring Set)

06-844100-20-STD  
06-844105-20 0,25 mm  
06-844107-20 0,50 mm  
06-844109-20 0,75 mm  
2.500  STD  
2.000  STD  
4.000  STD

**Silindir Gömleği**  
(Liner)

**Silindir Kit**  
(Assembly Set)

**Piston - Blok Montaj**  
Yüksekliği  
(Piston - Block  
Assembly Height)

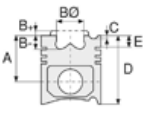




**Motor Özellikleri**  
(Engine Specifications)

İmalatçı (Manufacturer):  
MERCEDES BENZ LKW  
-IVECO LKW  
Çap (Diameter): Ø 86  
FM Grup No: 4074

**CURSOR 10-13**  
190 E39, 190 E43,  
260 E39, 260 E43,  
440 E39, EUROTRAKKER,  
KOMPRESÖR  
(Compressor)



**Piston Ölçüleri**  
(Piston Dimensions)

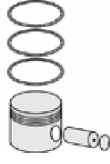
A : 26.500  
D : 57.000  
E : 3.000

Pim : 18 x 63



**Piston Özellikleri**  
(Piston Features)

Gözarası Düz  
(Flat Eye Gap)



**Piston Parça No**  
(Piston Part No)

87-894500-02  
87-72860-STD

87-894505-02  
87-72860-0,25

87-894507-02  
87-72860-0,50

87-894509-02  
87-72860-0,75

87-894511-02  
87-72860-1,00



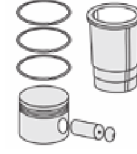
**Segman Seti**  
(Ring Set)

06-894500-00-STD  
06-894505-00-0,25  
06-894507-00-0,50 mm  
06-894509-00-0,75 mm  
06-894511-00-1,00 mm

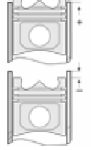
2.000 P GOE  
2.000 P GOE  
3.000 P GOE



**Silindir Gömleği**  
(Liner)



**Silindir Kit**  
(Assembly Set)



**Piston - Blok Montaj**  
Yüksekliği  
(Piston - Block  
Assembly Height)

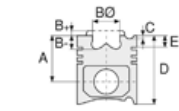




**Motor Özellikleri**  
(Engine Specifications)

İmalatçı (Manufacturer):  
KARSAN-IVECO LKW  
Çap (Diameter): Ø 88  
FM Grup No: 4087

**F1A Euro 5**  
4 Sil. Dizel 2300cc  
107 KW-146 PS  
Daily  
2014...



**Piston Ölçüleri**  
(Piston Dimensions)

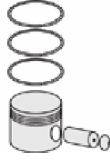
A : 57.000  
B - : 14.300  
BØ : 49.100  
D : 84.000  
E : 8.300

Pim : 31 x 67



**Piston Özellikleri**  
(Piston Features)

Segman Taşıyıcı  
(Ring Carrier)  
Soğutma Kanallı  
(Cooling Gallery)  
Yağ Püskürtme Oyuğu  
(Oil Jet Cut-Out)  
Gözarası Konik  
(Conical Eye Gap)



**Piston Parça No**  
(Piston Part No)

87-845000-02  
87-70678-STD  
87-845006-02  
87-70678-0,40



**Segman Seti**  
(Ring Set)

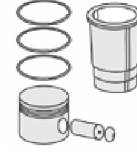
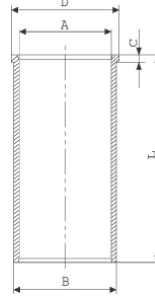
06-845000-00-STD  
06-845006-00-0,40 mm  
1.750 CK KV1  
1.500 F14  
2.000 CR STD

Yağ Segmanı Matkap Delik  
(Oil Ring Drill Hole)

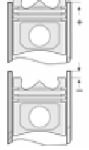


**Silindir Gömleği**  
(Liner)

14-022370-00-D  
B : 91.000  
L : 158.000  
D : 92.500  
C : 5.000



**Silindir Kit**  
(Assembly Set)



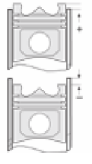
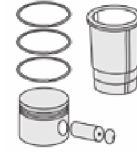
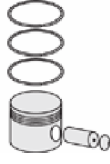
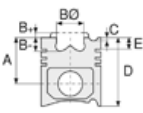
**Piston - Blok Montaj**  
Yüksekliği  
(Piston - Block  
Assembly Height)





IVECO LKW- Ø 88

87-70679-STD



**Motor Özellikleri**  
(Engine Specifications)

İmalatçı (Manufacturer):  
IVECO LKW  
Çap (Diameter): Ø 88  
FM Grup No: 4083

**C 13 - F1A Euro5**  
4 Sil. Dizel 2300cc  
96 KW-129 PS  
Daily  
2012....

**Piston Ölçüleri**  
(Piston Dimensions)

A : 57.000  
B- : 14.300  
BØ : 49.000  
D : 84.000  
E : 8.000

Pim: 31 x 67



**Piston Özellikleri**  
(Piston Features)

Segman Taşıyıcı  
(Ring Carrier)  
Soğutma Kanallı  
(Coolin Gallery)  
Yağ Püskürtme Oyuğu  
(Oil Jet Cut-out)  
Gözarası Konik  
(Conical Eye Gap)

**Piston Parça No**  
(Piston Part No)

87-844900-02  
87-70679-STD  
87-844906-02  
87-70679 0,40

**Segman Seti**  
(Ring Set)

06-844900-00-STD  
06-844906-00 0,40 mm  
2.500 CKS KV4  
2.000 F14  
2.500 CKS GOE

Yağ Segmanı Matkap Delik  
(Oil Ring Drill Hole)

**Silindir Gömleği**  
(Liner)

**Silindir Kit**  
(Assembly Set)

**Piston - Blok Montaj**  
Yüksekliği  
(Piston - Block  
Assembly Height)





IVECO LKW - Ø 94,4

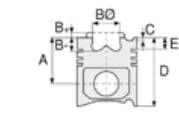
87-70713-STD



**Motor Özellikleri**  
(Engine Specifications)

İmalatçı (Manufacturer):  
IVECO LKW  
Çap (Diameter): Ø 94,4  
FM Grup No: 4001

8140.23.2585/  
8140.43.2585  
4 Sil. Dizel 2800cc  
76 Kw (103 PS) 18,5:1  
SOFIM Turbo  
Intercooled Motor  
No: --> 2572279  
35.10, 49.10,  
M14 MINIBUS,  
TURBO DAILY  
1996 - 1999



**Piston Ölçüleri**  
(Piston Dimensions)

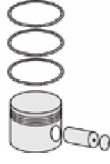
A : 58.750  
B - : 19.400  
BØ : 39.400  
BX : 3.700  
BY : 3.200  
D : 96.750  
E : 8.500

Pim: 32 x 78,1



**Piston Özellikleri**  
(Piston Features)

Segman Taşıyıcı  
(Ring Carrier)  
Soğutma Kanallı  
(Coolin Gallery)  
Yağ Püskürtme Oyuğu  
(Oil Jet Cut-out)  
Gözarası Düz  
(Flat Eye Gap)



**Piston Parça No**  
(Piston Part No)

87-854700-02  
87-70713-STD  
87-854708-02  
87-70713 0,60



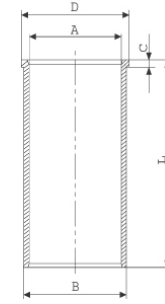
**Segman Seti**  
(Ring Set)

06-854700-00-STD  
06-854708-00 0,60 mm  
3.000 CRP KV1  
2.000 P F14  
3.000 CRP STD



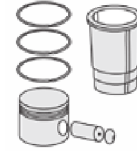
**Silindir Gömleği**  
(Liner)

14-020070-00-D  
B : 97.500  
L : 167.000  
D : 100.900  
C : 5.000

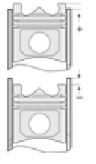


14-020071-00-D  
B : 98.000  
L : 167.000  
D : 101.400  
C : 5.000

Dış Çap 0,50mm Farklı  
(Outside Diameter  
0,50 mm Different)



**Silindir Kit**  
(Assembly Set)



**Piston - Blok Montaj**  
Yüksekliği  
(Piston - Block  
Assembly Height)

1,20 mm Conta ile  
(With Gasket)  
+0,40 / + 0,50  
1,30 mm Conta ile  
(With Gasket)  
+0,51 / +0,60  
1,40 mm Conta ile  
(With Gasket)  
+0,61 / +0,70  
1,50 mm Conta ile  
(With Gasket)  
+0,71 / +0,80





**Motor Özellikleri**  
(Engine Specifications)

İmalatçı (Manufacturer):  
Renault-Fiat-Opel-Iveco  
LKW-Peugeot-Citroen  
Çap (Diameter): 94,4  
FM Grup No: 1909

**S9W700-702**

4 Sil. Dizel 2800cc  
75 Kw (102 PS) 18,5:1  
SOFIM Turbo Intercooled  
/ Motor No: 2572280 -->  
MASTER 2.8 TDI  
2001 - 2003

**8140.23.2585/**

**8140.43.2585**

4 Sil. Dizel 2800cc  
85 Kw (115 PS) 18,5:1  
Sofim Turbo Intercooled  
Ducato 2.8 TD  
1996....

**SOFIM Turbo**

4 Sil. Dizel 2798cc  
76 Kw (103 PS) 18,5:1  
SOFIM Turbo Intercooled  
Euro 2  
Motor No: 2572280 -->  
MOVANO 2,8 TD  
1996....

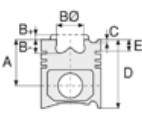
**8140.23.2585/8140.  
43.2585**

4 Sil. Dizel 2800cc  
85 Kw (115 PS) 18,5:1  
SOFIM Turbo Intercooled  
Motor No: 2572280 -->  
49.10, 49.12, M14  
MINIBUS,  
TURBO DAILY 35.12  
1999 - 2003

**8140.23.2585/**

**8140.43.2585**

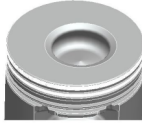
4 Sil. Dizel 2800cc  
75 KW (102 PS) 18,5:1  
Sofim, Turbo, Intercool  
Boxer 2.8 TD



**Piston Ölçüleri**  
(Piston Dimensions)

A : 58.750  
B - : 19.400  
BØ : 39.500  
BX : 3.600  
BY : 3.000  
D : 87.600  
E : 8.850

Pim: 32 x 72



**Piston Özellikleri**  
(Piston Features)

Segman Taşıyıcı  
(Ring Carrier)  
Soğutma Kanallı  
(Coolin Gallery)  
Yağ Püskürtme Oyuğu  
(Oil Jet Cut-out)  
Gözarası Konik  
(Conical Eye Gap)



**Piston Parça No**  
(Piston Part No)

87-854800-02  
87-70714-STD

87-854806-02  
87-70714-040

87-854808-02  
87-70714 0,60

87-854800-03  
87-70714-STD1  
0,20mm Kısa (Short)



**Segman Seti**  
(Ring Set)

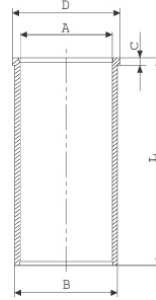
06-854800-00-STD  
06-854806-00 0,40 mm  
06-854808-00 0,60 mm

2.500 CKP KV1  
2.000 P F14  
2.500 CRP STD



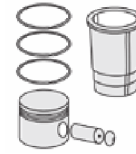
**Silindir Gömleği**  
(Liner)

14-020070-00-D  
B : 97.500  
L : 167.000  
D : 100.900  
C : 5.000

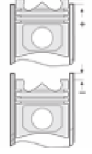


14-020071-00-D  
B : 98.000  
L : 167.000  
D : 101.400  
C : 5.000

Dış Çap 0,50mm Farklı  
(Outer Diameter  
0,50mm Different)



**Silindir Kit**  
(Assembly Set)



**Piston - Blok Montaj**  
**Yüksekliği**  
(Piston - Block  
Assembly Height)

1,20 mm conta ile  
(With Notch) +0,40/+0,50

1,30 mm conta ile  
(With Notch) +0,51/+0,60

1,40 mm conta ile  
(With Notch)+0,61 / +0,70

1,50 mm conta ile  
(With Notch)+0,71 / +0,80







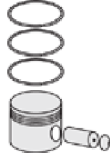
**Motor Özellikleri**  
(Engine Specifications)

8140.23.2585/3700  
4 Sil. Dizel 2800cc  
75 KW (102PS)  
JUMPER 2.8 TD

Renault, Fiat, Opel, Iveco  
LKW, Peugeot ve Citroen  
ile ortak motor (Common  
Engine With Renault, Fiat,  
Opel, Iveco LKW, Peugeot  
and Citroen)



**Piston Ölçüleri**  
(Piston Dimensions)



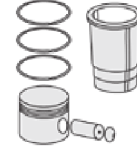
**Piston Parça No**  
(Piston Part No)



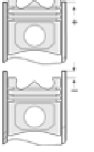
**Segman Seti**  
(Ring Set)



**Silindir Gömleği**  
(Liner)



**Silindir Kit**  
(Assembly Set)



**Piston - Blok Montaj**  
**Yüksekliği**  
(Piston - Block  
Assembly Height)





IVECO LKW - Ø 95

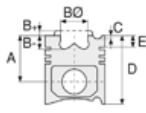
14-011300-00-D



**Motor Özellikleri**  
(Engine Specifications)

İmalatçı (Manufacturer):  
IVECO LKW  
Çap (Diameter): Ø 95  
FM Grup No: 4077

8035/803A/  
804A/806A



**Piston Ölçüleri**  
(Piston Dimensions)

**Piston Özellikleri**  
(Piston Features)



**Piston Parça No**  
(Piston Part No)

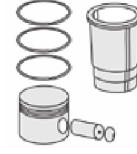
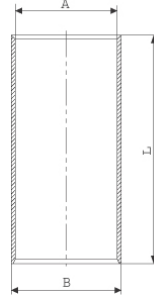


**Segman Seti**  
(Ring Set)

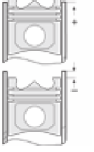


**Silindir Gömleği**  
(Liner)

14-011300-00-D  
B : 103.020  
L : 187.000



**Silindir Kit**  
(Assembly Set)



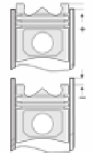
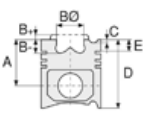
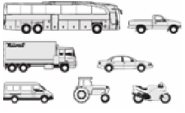
**Piston - Blok Montaj**  
Yüksekliği  
(Piston - Block  
Assembly Height)





IVECO LKW - Ø 95

87-70752-STD



**Motor Özellikleri**  
(Engine Specifications)

İmalatçı (Manufacturer):  
IVECO LKW  
Çap (Diameter): Ø 95  
FM Grup No: 4003

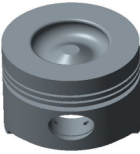
**213.000**

6 Sil. Dizel 4678cc  
67 Kw (90 PS) 16.9:1  
314 OTOBUS, 645 N,  
650 E, 662 N, C 40 N,  
C 50 N  
1958....

**Piston Ölçüleri**  
(Piston Dimensions)

A : 58.500  
B- : 18.000  
BØ : 53.000  
D : 100.500  
E : 18.250

Pim: 32 x 84



**Piston Özellikleri**  
(Piston Features)

Gözarası Düz  
(Flat Eye Gap)

**Piston Parça No**  
(Piston Part No)

87-207200-22  
87-70752-STD  
87-207206-22  
87-70752 040  
87-207208-22  
87-70752 060  
87-207211-22  
87-70752 100

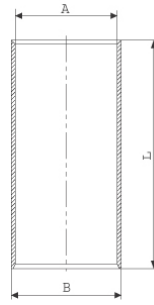
**Segman Seti**  
(Ring Set)

06-207200-10-STD  
06-207206-10 0,40 mm  
06-207208-10 0,60 mm  
06-207211-10 1,00 mm

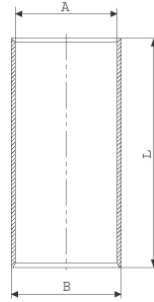
2.500 CRP KVI  
2.500 P IKA  
5.500 CRP STD

**Silindir Gömleği**  
(Liner)

14-010620-00-D  
B : 99.000  
L : 187.000



14-019870-00 D  
B : 103.000  
L : 187.000



**Silindir Kit**  
(Assembly Set)

**Piston - Blok Montaj**  
Yüksekliği  
(Piston - Block  
Assembly Height)

+0,312 / +0,617





IVECO LKW - Ø 102

87-72854-STD



**Motor Özellikleri**  
(Engine Specifications)

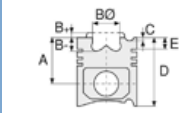
İmalatçı (Manufacturer):  
IVECO LKW  
Çap (Diameter): Ø 102  
FM Grup No: 4064

**F4AE 0681 EURO 3**  
**TECTOR C.RAİL**

6 Sil. Dizel 5880cc  
210/240 Ps  
100 E 18 Eurocargo,  
150 E 21 Eurocargo,  
160 E 24 Eurocargo,  
180 E 28 Eurocargo,  
220 E 21 Eurocargo,  
250 E 24 Eurocargo  
2005....

**F4AE 0481 EURO 3**  
**TECTOR C.RAİL**

4 Sil.mDizel 3920cc  
150/130 PS  
CUMMINS İLE ORTAK  
MOTOR  
(Common Engine With  
Cummins)  
130 E 15 Eurocargo,  
85 E 13 Eurocargo,  
Eurobus 31.17,  
Eurobus 35.17  
2005....



**Piston Ölçüleri**  
(Piston Dimensions)

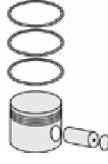
A : 71.400  
B - : 18.500  
BØ : 56.500  
D : 105.300  
E : 8.000

Pim: 40 x 82,7



**Piston Özellikleri**  
(Piston Features)

Segman Taşıyıcı  
(Ring Carrier)  
Soğutma Kanallı  
(Coolin Gallery)  
Yağ Püskürtme Oyuğu  
(Oil Jet Cut-out)  
Gözarası Konik  
(Conical Eye Gap)



**Piston Parça No**  
(Piston Part No)

87-135200-02  
87-72854-STD  
87-135207-02  
87-72854 0,50

87-135200-03  
87-72854-STD1  
0,20 mm Kısa (Short)



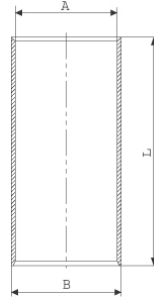
**Segman Seti**  
(Ring Set)

06-135200-00-STD  
06-135207-00 0,50 mm  
3.000 CKP KVI  
2.390 P GOE  
4.000 CR GOE



**Silindir Gömleği**  
(Liner)

14-014530-00-D  
B : 104.565  
L : 200.000

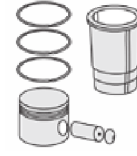


14-014531-00-D  
B : 105.065  
L : 200.000

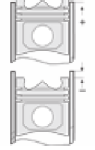
Dış Çap 0,50mm Farklı  
(Outside Diameter  
0,50 mm Different)

14-014532-00-D  
B : 105.565  
L : 200.000

Dış Çap 1,00mm Farklı  
(Outside Diameter  
1,00 mm Different)



**Silindir Kit**  
(Assembly Set)



**Piston - Blok Montaj**  
**Yüksekliği**  
(Piston - Block  
Assembly Height)

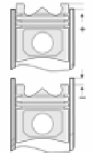
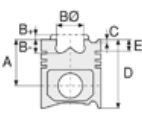
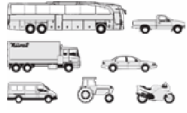
+0,28 /+0,52





IVECO LKW - Ø 102

87-72868-STD



**Motor Özellikleri**  
(Engine Specifications)

İmalatçı (Manufacturer):  
IVECO LKW  
Çap (Diameter): Ø 102  
FM Grup No: 4079

**F4AE3481B EURO 4 /**  
**F4AE3681D EURO 5**  
4 Sil. Dizel 3920cc  
130 kW(177 PS)  
100 E 18 EURO CARGO II  
2008...

**Piston Ölçüleri**  
(Piston Dimensions)

A : 71.400  
B - : 17.150  
BØ : 56.800  
D : 105.300  
E : 8.000

Pim: 40 x 83



**Piston Özellikleri**  
(Piston Features)

Segman Taşıyıcı  
(Ring Carrier)  
Soğutma Kanallı  
(Coolin Gallery)  
Yağ Püskürtme Oyuğu  
(Oil Jet Cut-out)  
Gözarası Konik  
(Conical Eye Gap)

**Piston Parça No**  
(Piston Part No)

87-135200-22  
87-72868-STD  
87-135207-22  
87-72868 0,50

**Segman Seti**  
(Ring Set)

06-135200-00-STD  
06-135207-00 0,50 mm  
3.000 CKP KVI  
2.390 P GOE  
4.000 CR GOE

**Silindir Gömleği**  
(Liner)

**Silindir Kit**  
(Assembly Set)

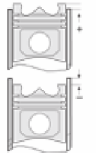
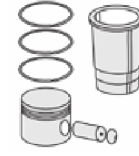
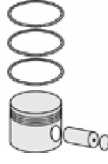
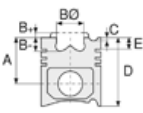
**Piston - Blok Montaj**  
Yüksekliği  
(Piston - Block  
Assembly Height)





IVECO LKW - Ø 104

87-70617-STD



**Motor Özellikleri**  
(Engine Specifications)

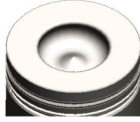
İmalatçı (Manufacturer):  
IVECO LKW  
Çap (Diameter): 104  
FM Grup No: 4080

8065.25.000  
6 Sil. Dizel 5863cc  
107 Kw-145 Ps 16,5:1  
90-100-140 Serisi  
1984....

**Piston Ölçüleri**  
(Piston Dimensions)

A : 65.150  
B- : 22.500  
BØ : 57.100  
D : 108.500  
E : 15.200

Pim: 38 x 89



**Piston Özellikleri**  
(Piston Features)

Segman Taşıyıcı  
(Ring Carrier)  
Yağ Püskürtme Oyuğu  
(Oil Jet Cut-out)  
Gözarası Düz  
(Flat Eye Gap)

**Piston Parça No**  
(Piston Part No)

87-244500-22  
87-70617-STD

**Segman Seti**  
(Ring Set)

06-244500-00-STD

3.000 CR KV1  
2.500 P IKA  
4.000 CR STD

**Silindir Gömleği**  
(Liner)

**Silindir Kit**  
(Assembly Set)

**Piston - Blok Montaj**  
**Yüksekliği**  
(Piston - Block  
Assembly Height)





IVECO LKW - Ø 104

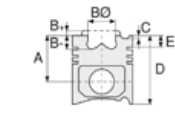
87-70618-STD



**Motor Özellikleri**  
(Engine Specifications)

İmalatçı (Manufacturer):  
IVECO LKW  
Çap (Diameter): Ø 104  
FM Grup No: 4088

**F4AFE411 A-B-C**  
4 Sil. Dizel 4485cc  
118 KW-160 PS  
Sabit Mot-Endüstriyel  
(Fixed Eng.-Industrial)



**Piston Ölçüleri**  
(Piston Dimensions)

A : 62.700  
B- : 20.000  
BØ : 76.700  
D : 96.400  
E : 13.100

Pim: 40 x 87,5



**Piston Özellikleri**  
(Piston Features)

Segman Taşıyıcı  
(Ring Carrier)  
Soğutma Kanallı  
(Coolin Gallery)  
Yağ Püskürtme Oyuğu  
(Oil Jet Cut-out)  
Gözarası Konik  
(Conical Eye Gap)



**Piston Parça No**  
(Piston Part No)

87-858200-02  
87-70618-STD  
87-858206-02  
87-70618 0,40



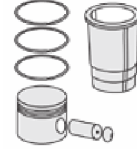
**Segman Seti**  
(Ring Set)

06-858200-00-STD  
06-858206-00 0,40

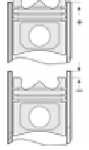
3.000  CKS KVI  
2.385  P GOE  
4.000  CR GOE



**Silindir Gömleği**  
(Liner)



**Silindir Kit**  
(Assembly Set)



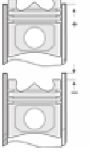
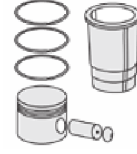
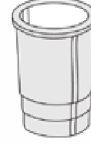
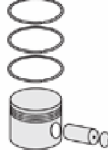
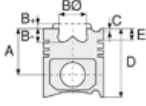
**Piston - Blok Montaj**  
Yüksekliği  
(Piston - Block  
Assembly Height)





IVECO LKW - Ø 104

87-70619-STD



**Motor Özellikleri**  
(Engine Specifications)

İmalatçı (Manufacturer):  
IVECO LKW  
Çap (Diameter): Ø 104  
FM Grup No: 4089

**F4AFE411 E**  
4 Sil. Dizel 4485cc  
118 KW-160 PS  
60E16-60E16P-  
75E19-75E19P

**Piston Ölçüleri**  
(Piston Dimensions)

A : 62.700  
B- : 17.700  
BØ : 75.200  
D : 96.400  
E : 13.100

Pim: 40 x 87,5



**Piston Özellikleri**  
(Piston Features)

Segman Taşıyıcı  
(Ring Carrier)  
Soğutma Kanallı  
(Coolin Gallery)  
Yağ Püskürtme Oyuğu  
(Oil Jet Cut-out)  
Gözarası Konik  
(Conical Eye Gap)

**Piston Parça No**  
(Piston Part No)

87-858200-22  
87-70619-STD  
87-858206-22  
87-70619 0,40

**Segman Seti**  
(Ring Set)

06-858200-00-STD  
06-858206-00 0,40  
3.000 CKS KV1  
2.385 P GOE  
4.000 CR GOE

**Silindir Gömleği**  
(Liner)

**Silindir Kit**  
(Assembly Set)

**Piston - Blok Montaj**  
Yüksekliği  
(Piston - Block  
Assembly Height)







KHD - IVECO LKW Ø 104

87-70776-STD



**Motor Özellikleri**  
(Engine Specifications)

İmalatçı (Manufacturer):  
KHD-IVECO LKW  
Çap (Diameter): Ø 104  
FM Grup No: 4010

**8040.05**

4 Sil. Dizel 3908cc 59  
Kw (80 PS) 17:1 35 NC,  
50 NC, M 23LS, M24  
1986 - 1992

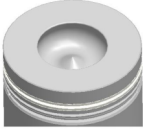
**8045.05.000**

4 Sil. Dizel 3908cc  
52/59 Kw (71/80 PS) 17:1  
Khd İle Ortak Motor  
(With Khd Common  
Engine)  
KAMYON (Truck) 35.9,  
KAMYON (Truck) 65.9  
1987...

**Piston Ölçüleri**  
(Piston Dimensions)

A : 65.150  
B- : 22.500  
BØ : 52.200  
D : 108.500  
E : 17.600

Pim : 38 x 85



**Piston Özellikleri**  
(Piston Features)

Segman Taşıyıcı  
(Ring Carrier)  
Gözarası Konik  
(Conical Eye Gap)



**Piston Parça No**  
(Piston Part No)

87-839700-22  
87-70776-STD



**Segman Seti**  
(Ring Set)

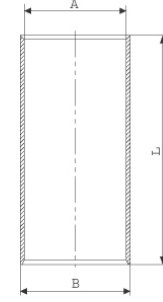
06-839700-10-STD  
2.500 CRP KV1  
2.500 P IKA  
4.000 CRP STD

Goetze® LKZ-Ring®



**Silindir Gömleği**  
(Liner)

14-010940-00-D  
B : 107.000  
L : 198.000

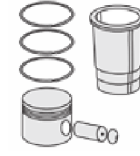


14-010942-00-D  
B : 107.500  
L : 198.000

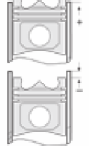
Dış Çap 0,50mm Farklı  
(Outside Diameter  
0.50mm Different)

14-010943-00-D  
B : 108.000  
L : 198.000

Dış Çap 1,00mm Farklı  
(Outside Diameter  
1.00mm Different)



**Silindir Kit**  
(Assembly Set)



**Piston - Blok Montaj**  
Yüksekliği  
(Piston - Block  
Assembly Height)

+ 0,460 / + 0,790

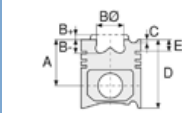




**Motor Özellikleri**  
(Engine Specifications)

İmalatçı (Manufacturer):  
IVECO LKW  
Çap (Diameter): Ø 104  
FM Grup No: 4012

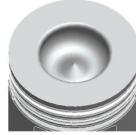
**8040.25**  
4 Sil. Dizel 3908cc  
86 Kw (115 PS) 17:1  
Turbocharge /  
Khd ile ortak motor  
(Common Engine With  
Turbocharge / Khd)  
23.12, 24.12, 85.12  
KAMYON, M29 MIDIBUS  
1987 - 1992



**Piston Ölçüleri**  
(Piston Dimensions)

A : 65.150  
B- : 22.500  
BØ : 54.450  
D : 104.150  
E : 21.550

Pim: 38 x 85



**Piston Özellikleri**  
(Piston Features)

Segman Taşıyıcı  
(Ring Carrier)  
Yağ Püskürtme Oyuğu  
(Oil Spray Groove)  
Gözarası Konik  
(Conical Eye Gap)



**Piston Parça No**  
(Piston Part No)

87-837600-13  
87-70777-STD1C  
- 0,20 mm Kısa (Short)  
87-837600-12  
87-70777-STD C  
87-837608-12  
87-70777-060C



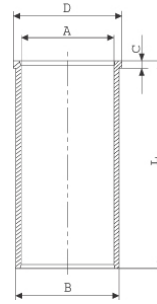
**Segman Seti**  
(Ring Set)

06-837600-90-STD  
3.000 CKP KV1  
3.000 P IKA  
4.000 CRP STD  
Goetze® LKZ-Ring®



**Silindir Gömleği**  
(Liner)

14-020440-00-D  
B : 107.000  
L : 198.000  
D : 110.500  
C : 6.500



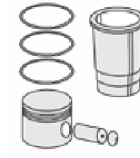
14-020441-00-D  
B : 107.200  
L : 198.000  
D : 110.500  
C : 6.500

Dış Çap 0,20 mm Farklı  
(Outside Diameter  
0,20 mm Different)

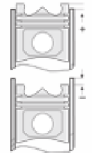
14-020442-00-D  
B : 107.500  
L : 198.000  
D : 111.000  
C : 6.500

Dış Çap 0,50 mm Farklı  
(Outside Diameter  
0,50 mm Different)

14-028640-00-D  
B : 106.970  
L : 198.000  
D : 109.900  
C : 5.000



**Silindir Kit**  
(Assembly Set)



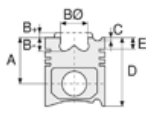
**Piston - Blok Montaj**  
Yüksekliği  
(Piston - Block  
Assembly Height)

+ 0,460 / + 0,790





**Motor Özellikleri**  
(Engine Specifications)



**Piston Ölçüleri**  
(Piston Dimensions)



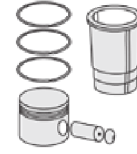
**Piston Parça No**  
(Piston Part No)



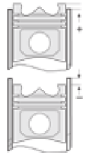
**Segman Seti**  
(Ring Set)



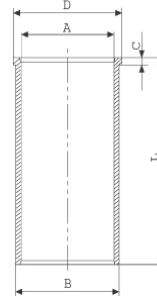
**Silindir Gömleği**  
(Liner)



**Silindir Kit**  
(Assembly Set)



**Piston - Blok Montaj**  
**Yüksekliği**  
(Piston - Block  
Assembly Height)



14-028641-00-D  
B : 107.170  
L : 198.000  
D : 109.900  
C : 5.000

Dış Çap 0,20mm Farklı,  
(Outside Diameter  
0,20 mm Different)

14-028642-00-D  
B : 107.470  
L : 198.000  
D : 109.900  
C : 5.000

Dış Çap 0,50mm Farklı  
(Outside Diameter  
0,50 mm Different)

14-028643-00-D  
B : 108.000  
L : 198.000  
D : 110.500  
C : 5.500

Dış Çap 1,00 mm farklı  
(Outside Diameter  
1,00 mm Different)

14-028644-00-D  
B : 108.500  
L : 198.000  
D : 111.000  
C : 6.000

Dış Çap 1,50 mm farklı  
(Outside Diameter  
1,50 mm Different)

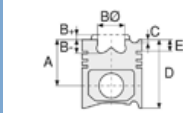




**Motor Özellikleri**  
(Engine Specifications)

İmalatçı (Manufacturer):  
IVECO LKW  
Çap (Diameter): Ø 104  
FM Grup No: 4013

**8040.45.400 Euro1**  
4 Sil.nDizel 3908cc 100  
Kw (136 PS) 17:1  
Turbo Intercooled  
120.14 KAMYON,  
85.14 KAMYON,  
E25.14 MIDIBUS,  
E29.14 MIDIBUS  
1996 - 2001



**Piston Ölçüleri**  
(Piston Dimensions)

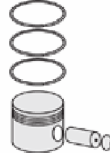
A : 65.330  
B- : 22.100  
BØ : 54.450  
BX : 3.500  
D : 104.330  
E : 21.730

Pim: 38 x 85



**Piston Özellikleri**  
(Piston Features)

Segman Taşıyıcı  
(Ring Carrier)  
Yağ Püskürtme Oyuğu  
(Oil Spray Groove)  
Gözarası Konik  
(Conical Eye Gap)



**Piston Parça No**  
(Piston Part No)

87-854400-13  
87-70778-STDA1  
- 0,20 mm Kısa (Short)  
87-854400-12  
87-70778-STDA



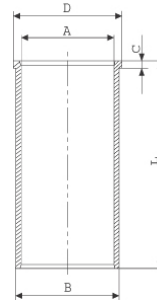
**Segman Seti**  
(Ring Set)

06-854400-90-STD  
3.000 CKP KV1  
2.500 P IKA  
4.000 CRP STD  
Goetze® LKZ-Ring®



**Silindir Gömleği**  
(Liner)

14-020440-00-D  
B : 107.000  
L : 198.000  
D : 110.500  
C : 6.500



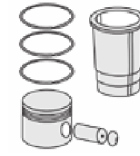
14-020441-00-D  
B : 107.200  
L : 198.000  
D : 110.500  
C : 6.500

Dış Çap 0,20 mm Farklı  
(Outside Diameter  
0,20 mm Different)

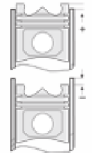
14-020442-00-D  
B : 107.500  
L : 198.000  
D : 111.000  
C : 6.500

Dış Çap 0,50 mm Farklı  
(Outside Diameter  
0,50 mm Different)

14-028640-00-D  
B : 106.970  
L : 198.000  
D : 109.900  
C : 5.000



**Silindir Kit**  
(Assembly Set)



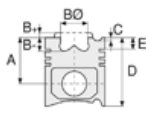
**Piston - Blok Montaj**  
Yüksekliği  
(Piston - Block  
Assembly Height)

+ 0,53 / + 0,72

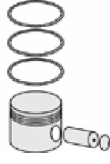




**Motor Özellikleri**  
(Engine Specifications)



**Piston Ölçüleri**  
(Piston Dimensions)



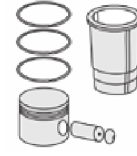
**Piston Parça No**  
(Piston Part No)



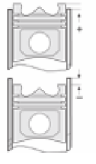
**Segman Seti**  
(Ring Set)



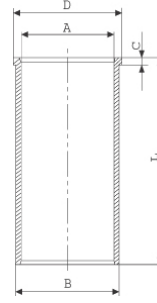
**Silindir Gömleği**  
(Liner)



**Silindir Kit**  
(Assembly Set)



**Piston - Blok Montaj**  
**Yüksekliği**  
(Piston - Block  
Assembly Height)



14-028641-00-D  
B : 107.170  
L : 198.000  
D : 109.900  
C : 5.000

Dış Çap 0,20mm Farklı,  
(Outside Diameter  
0,20 mm Different)

14-028642-00-D  
B : 107.470  
L : 198.000  
D : 109.900  
C : 5.000

Dış Çap 0,50mm Farklı  
(Outside Diameter  
0,50 mm Different)

14-028643-00-D  
B : 108.000  
L : 198.000  
D : 110.500  
C : 5.500

Dış Çap 1,00 mm Farklı  
(Outside Diameter  
1,00 mm Different)

14-028644-00-D  
B : 108.500  
L : 198.000  
D : 111.000  
C : 6.000

Dış Çap 1,50 mm Farklı  
(Outside Diameter  
1,50 mm Different)

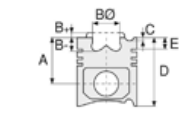




**Motor Özellikleri**  
(Engine Specifications)

İmalatçı (Manufacturer):  
IVECO LKW  
Çap (Diameter): Ø 104  
FM Grup No: 4008

**8040.25X.4984 Euro1**  
4 Sil. Dizel 3908cc  
86 Kw (115 PS) 17:1  
Turbocharge  
25.12, 80.12, 85.12,  
E 27.12, E 29.12,  
M 14.12, M 29.12, M 50  
2002....



**Piston Ölçüleri**  
(Piston Dimensions)

A : 65.330  
B- : 20.330  
BØ : 48.200  
BX : 3.500  
BY : 3.000  
D : 104.330  
E : 6.430

Pim: 38 x 85



**Piston Özellikleri**  
(Piston Features)

Segman Taşıyıcı  
(Ring Carrier)  
Sert Anotlama  
(Hard Anodizing)  
Yağ Püskürtme Oyuğu  
(Oil Jet Cut-out)  
Gözarası Konik  
(Conical Eye Gap)



**Piston Parça No**  
(Piston Part No)

87-855500-13  
87-70780-STD1A  
- 0,20 mm kısa (Short)  
87-855500-12  
87-70780-STD A



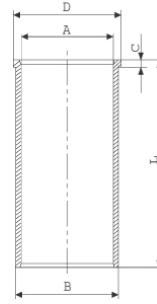
**Segman Seti**  
(Ring Set)

06-855500-00-STD  
3.500 CKP KV1  
2.500 P IKA  
4.000 CRP STD



**Silindir Gömleği**  
(Liner)

14-020440-00-D  
B : 107.000  
L : 198.000  
D : 110.500  
C : 6.500

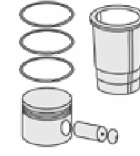


14-020441-00-D  
B : 107.200  
L : 198.000  
D : 110.500  
C : 6.500

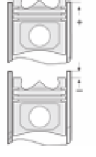
Dış çap 0,20 mm farklı  
(Outside Diameter  
0,20 mm Different)

14-020442-00-D  
B : 107.500  
L : 198.000  
D : 111.000  
C : 6.500

Dış çap 0,50 mm farklı  
(Outside Diameter  
0,50 mm Different)



**Silindir Kit**  
(Assembly Set)



**Piston - Blok Montaj**  
Yüksekliği  
(Piston - Block  
Assembly Height)

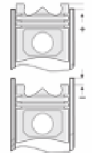
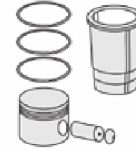
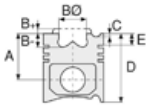
1,43 mm Conta ile  
(With Gasket)  
+0,32 / +0,72  
1,59 mm Conta ile  
(With Gasket)  
+0,73 / +0,93





IVECO LKW - Ø 104

87-72870-STD



**Motor Özellikleri**  
(Engine Specifications)

**Piston Ölçüleri**  
(Piston Dimensions)

**Piston Parça No**  
(Piston Part No)

**Segman Seti**  
(Ring Set)

**Silindir Gömleği**  
(Liner)

**Silindir Kit**  
(Assembly Set)

**Piston - Blok Montaj**  
**Yüksekliği**  
(Piston - Block  
Assembly Height)

İmalatçı (Manufacturer):  
IVECO LKW  
Çap (Diameter): Ø 104  
FM Grup No: 4046

A : 65.330  
B- : 21.400  
BØ : 48.200  
BX : 3.500  
BY : 3.000  
D : 104.330  
E : 6.680

87-854400-22  
87-72870-STD  
87-854400-23  
87-72870-STD1  
0,20 mm Kısa (Short)

06-854400-90-STD  
3.500 CKP KV1  
2.500 P IKA  
4.000 CRP STD  
Goetze® LKZ-Ring®

**8040.45 TCA EURO 2**  
4 Sil. Dizel 3907cc  
85-100 KW  
(115-136 PS) 17:1  
TURBO, LLK  
130 E23 EURO CARGO,  
65 E14  
1996....

Pim: 38 x 85



**8040.45 EURO 2**  
4 Sil. Dizel 3907cc  
100 KW (136 PS) 18:1  
25 E14 EURO CARGO,  
29 E14  
1996....

**Piston Özellikleri**  
(Piston Features)

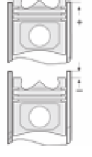
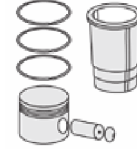
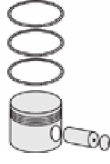
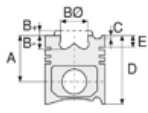
Segman Taşıyıcı  
(Ring Carrier)  
Yağ Püskürtme Oyuğu  
(Oil Jet Cut-out)  
Gözarası Konik  
(Conical Eye Gap)

**8040.45 5200 EURO 2**  
4 Sil. Dizel 3907cc  
100 KW (136 PS) 18:1  
67 E14,  
74 E14 EURO CARGO  
1994....

**8040.45 5201/5203/  
5280/5281 EURO 2**  
4 Sil. Dizel 3907cc  
100 KW (136 PS) 18:1  
67 E14, 74 E14 EURO CARGO  
1996....

**8040.45D 5100/5101/  
5103/5105 EURO 2**  
4 Sil. Dizel 3907cc  
85 KW (116 PS) 18:1  
67 E12 EURO CARGO, 75 E12  
1996....

**8060.45 TCA EURO 2**  
6 Sil. Dizel 5861cc  
130-152 KW  
(177-207 PS) 17:01  
TURBO, LLK  
130 E23 EURO CARGO,  
65 E14  
1996....



**Motor Özellikleri**  
(Engine Specifications)

**Piston Ölçüleri**  
(Piston Dimensions)

**Piston Parça No**  
(Piston Part No)

**Segman Seti**  
(Ring Set)

**Silindir Gömleği**  
(Liner)

**Silindir Kit**  
(Assembly Set)

**Piston - Blok Montaj**  
Yüksekliği  
(Piston - Block  
Assembly Height)

8060.45 5200/5201/  
5203/5205 EURO 2  
6 Sil. Dizel 5861cc  
151 KW (206 PS) 18:1  
100 E21, 180 E21,  
80 E21 EURO CARGO  
1996....

8060.45 5220/  
5221/5223  
6 Sil. Dizel 5861cc  
151 KW (206 PS) 18:1  
150 E21H EURO CARGO  
1995....

8060.45 5220/  
5221/5223  
6 Sil. Dizel 5861cc  
151 KW (206 PS) 18:1  
120 EL21 EURO CARGO  
1995....

8060.45 5250/  
5251/5255  
6 Sil. Dizel 5861cc  
151 KW (206 PS) 18:1  
95 E21 EURO CARGO  
1995....







IVECO LKW - Ø 110

87-71701-STDA

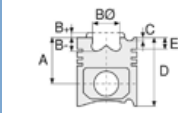


**Motor Özellikleri**  
(Engine Specifications)

İmalatçı (Manufacturer):  
IVECO LKW  
Çap (Diameter): Ø 110  
FM Grup No: 4062

**CP3**

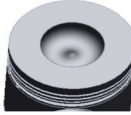
6 Sil. Dizel 7412cc 17,4:1  
CO3, C13, LEONCINO,  
SINBUS 150, C13,  
LEONCINO, SINBUS 150



**Piston Ölçüleri**  
(Piston Dimensions)

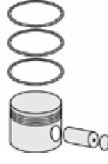
A : 70.250  
B- : 28.000  
BØ : 54.800  
D : 140.200  
E : 15.600

Pim: 40 x 93



**Piston Özellikleri**  
(Piston Features)

Gözarası Konik  
(Conical Eye Gap)



**Piston Parça No**  
(Piston Part No)

87-207500-32  
87-71701-STDA



**Segman Seti**  
(Ring Set)

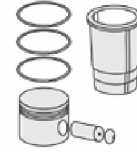
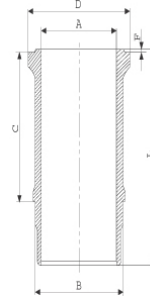
06-207500-20-STD

2.500 CRP STD  
2.500 STD  
2.500 STD  
5.000 CRP STD



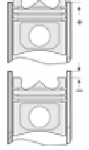
**Silindir Gömleği**  
(Liner)

14-611250-00-WH  
B : 118.000  
L : 237.000  
D : 129.500  
C : 170.000  
F : 1.000



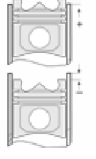
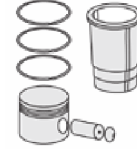
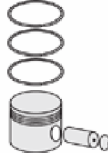
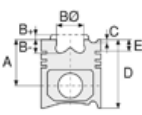
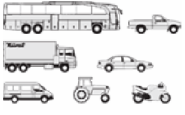
**Silindir Kit**  
(Assembly Set)

88-207500-32-STD  
88-71701-STDA



**Piston - Blok Montaj**  
Yüksekliği  
(Piston - Block  
Assembly Height)





**Motor Özellikleri**  
(Engine Specifications)

İmalatçı (Manufacturer):  
IVECO LKW  
Çap (Diameter): Ø 110  
FM Grup No: 4014

**CO3/20/21/41**

4 Sil. Dizel 4562cc 17:1  
130 NC, 329 A,  
50 A1, 65 NC, 70 NC,  
75 NC, 850, 850 C,  
850 S, CERBIATTO 20,  
DAINO 40, DAINO 45,  
LEONCINO 35,36  
1969 - 1978

**CO3/70/100**

4 Sil. Dizel 4941cc 17:1  
CERBIATTO,  
LEONCINO A 15,  
TIGROTTO 50,55,  
65,75,M5K  
1969 - 1978

**CP3**

6 Sil. Dizel 7412cc 17,4:1  
130 NC, 130 NR,  
130 NT, 673 N,  
673 NR, 673 T  
1969....

**Piston Ölçüleri**  
(Piston Dimensions)

A : 75.200  
B- : 27.600  
BØ : 51.000  
D : 150.200  
E : 15.500

Pim: 40 x 94



**Piston Özellikleri**  
(Piston Features)

Gözarası Konik  
(Conical Eye Gap)

**Piston Parça No**  
(Piston Part No)

87-207500-12  
87-71702-STD

**Segman Seti**  
(Ring Set)

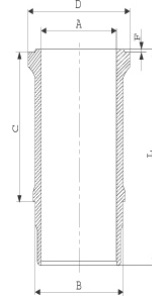
06-207500-20-STD

2.500 CRP STD  
2.500 STD  
2.500 STD  
5.000 CRP STD

**Silindir Gömleği**  
(Liner)

14-611250-00-WH

B : 118.000  
L : 237.000  
D : 129.500  
C : 170.000  
F : 1.000



**Silindir Kit**  
(Assembly Set)

88-207500-12-STD  
88-71702-STD

**Piston - Blok Montaj**  
Yüksekliği  
(Piston - Block  
Assembly Height)





IVECO LKW - Ø 115

14-684840-00-WH



**Motor Özellikleri**  
(Engine Specifications)

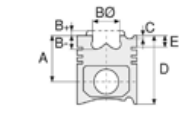
İmalatçı (Manufacturer):  
IVECO LKW  
Çap (Diameter): Ø 115  
FM Grup No: 4027

**8340.04/05**

4 Sil. Dizel  
50.10, 50.9, 55.10,  
55.9, 60.10, 65.10,  
70.10, 70.12, 75.10, 79.10  
1978....

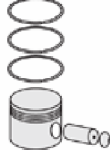
**8360.04/05**

6 Sil. Dizel  
120.14, 130.14, 140.14,  
150.14, 150.17, 159.17  
1978....



**Piston Ölçüleri**  
(Piston Dimensions)

**Piston Özellikleri**  
(Piston Features)



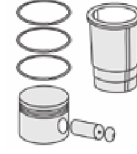
**Piston Parça No**  
(Piston Part No)



**Segman Seti**  
(Ring Set)

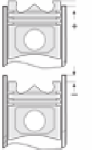
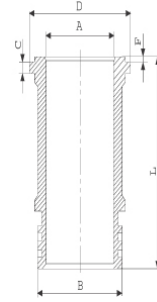


**Silindir Gömleği**  
(Liner)



**Silindir Kit**  
(Assembly Set)

14-684840-00-WH  
B : 122.000  
L : 235.000  
D : 129.700  
C : 167.000



**Piston - Blok Montaj**  
Yüksekliği  
(Piston - Block  
Assembly Height)





IVECO LKW - Ø 115

87-71704-STDA



**Motor Özellikleri**  
(Engine Specifications)

İmalatçı (Manufacturer):  
IVECO LKW  
Çap (Diameter): Ø 115  
FM Grup No: 4016

8365.25.500/532/533

6 Sil. Dizel 8102cc

120/132 Kw

(163/180 PS) 15,5:1

Turbocharge

Strok:130 mm

1580, 160.90,

180.90, 1880,

FA 150, FD 14,

FE 28, FG 85,

FG 95, FL 14,

FR 15, FR 158, FR 20

1980....

**Piston Ölçüleri**  
(Piston Dimensions)

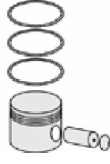
A : 76.500  
B- : 29.000  
BØ : 59.300  
D : 140.500  
E : 18.750

Pim: 42 x 97



**Piston Özellikleri**  
(Piston Features)

Segman Taşıyıcı  
(Ring Carrier)  
Gözarası Düz  
(Flat Eye Gap)



**Piston Parça No**  
(Piston Part No)

87-245500-12  
87-71704-STDA



**Segman Seti**  
(Ring Set)

06-245500-20-STD

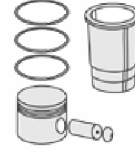
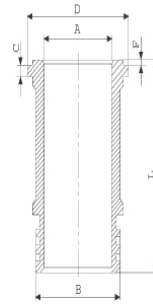
3.000 CR IKA  
2.500 STD  
4.000 CR STD



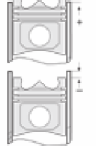
**Silindir Gömleği**  
(Liner)

14-684840-00-WH

B : 122.000  
L : 235.000  
D : 129.700  
C : 167.000



**Silindir Kit**  
(Assembly Set)



**Piston - Blok Montaj**  
Yüksekliği  
(Piston - Block  
Assembly Height)

- 0,298 / + 0,614





IVECO LKW - Ø 115

87-71705-STDA



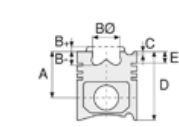
**Motor Özellikleri**  
(Engine Specifications)

İmalatçı (Manufacturer):  
IVECO LKW  
Çap (Diameter): Ø 115  
FM Grup No: 4017

5.4

4 Sil. Dizel 5401cc  
68 Kw (93 PS) 17:1  
FL 9, TRAKTOR C03-130  
1977....

8360.05.300/673  
6 Sil. Dizel 8100cc  
117/119 Kw (159/162 PS) 17:1  
Strok:130 mm  
140, 150 NC17, 159,  
TRAKTOR C03-130  
1979....



**Piston Ölçüleri**  
(Piston Dimensions)

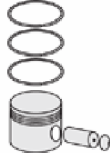
A : 76.500  
B- : 29.400  
BØ : 54.000  
D : 140.500  
E : 19.000

Pim: 42 x 97



**Piston Özellikleri**  
(Piston Features)

Segman Taşıyıcı  
(Ring Carrier)  
Gözarası Düz  
(Flat Eye Gap)



**Piston Parça No**  
(Piston Part No)

87-214900-12  
87-71705-STDA



**Segman Seti**  
(Ring Set)

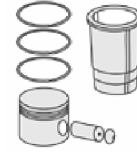
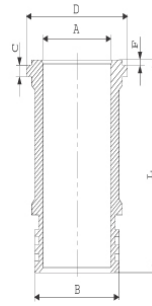
06-214900-20-STD

2.500 CR IKA  
2.500 P STD  
4.000 CR STD

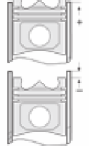


**Silindir Gömleği**  
(Liner)

14-684840-00-WH  
B : 122.000  
L : 235.000  
D : 129.700  
C : 167.000



**Silindir Kit**  
(Assembly Set)



**Piston - Blok Montaj**  
Yüksekliği  
(Piston - Block  
Assembly Height)

- 0,29 / + 0,1





IVECO LKW - Ø 115

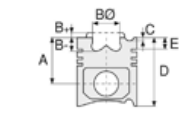
87-72880-STD



**Motor Özellikleri**  
(Engine Specifications)

İmalatçı (Manufacturer):  
IVECO LKW  
Çap (Diameter): Ø 115  
FM Grup No: 4061

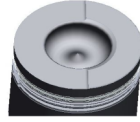
8365.25.500,  
8365.25.532,  
8365.25.533  
6 Sil. Dizel 8102cc  
120-132 kW  
(163 - 180 PS) 15,5:1  
TURBO  
1580, 1880, FD 14, FL 14  
1980....



**Piston Ölçüleri**  
(Piston Dimensions)

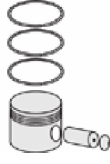
A : 76.500  
B - : 27.700  
BØ : 59.000  
D : 126.500  
E : 18.650

Pim: 42 x 97



**Piston Özellikleri**  
(Piston Features)

Segman Taşıyıcı  
(Ring Carrier)  
Gözarası Düz  
(Flat Eye Gap)



**Piston Parça No**  
(Piston Part No)

87-245500-32  
87-72880-STD



**Segman Seti**  
(Ring Set)

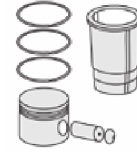
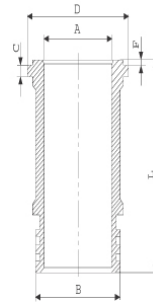
06-245500-20-STD

3.000 CR IKA  
2.500 P STD  
4.000 CR STD

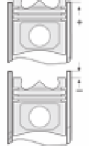


**Silindir Gömleği**  
(Liner)

14-684840-00-WH  
B : 122.000  
L : 235.000  
D : 129.700  
C : 167.000



**Silindir Kit**  
(Assembly Set)



**Piston - Blok Montaj**  
Yüksekliği  
(Piston - Block  
Assembly Height)

+0,20 / +0,45





IVECO LKW - Ø 120

06-785300-20-STD

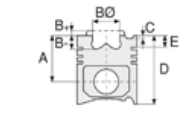


**Motor Özellikleri**  
(Engine Specifications)

İmalatçı (Manufacturer):  
IVECO LKW  
Çap (Diameter): Ø 120  
FM Grup No: 4026

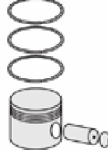
8460.21.002.042.  
102.106.708.710 ,  
8465.21.002  
6 Sil. Dizel 9500cc  
Turbo  
175.24 RSU, 190.24 TRU,  
190.26 TRU, 260.26 TRU,  
480.580, 510.24  
1986....

8460.41  
6 Sil. Dizel 9500cc 17:01  
Turbo intercool  
190.32 GV, 190.32 TRU,  
220.32 TRU, 240.32 GV,  
260.32 TRU  
1987....



**Piston Ölçüleri**  
(Piston Dimensions)

**Piston Özellikleri**  
(Piston Features)



**Piston Parça No**  
(Piston Part No)



**Segman Seti**  
(Ring Set)

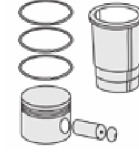
06-785300-20-STD

3.500  CR KV1  
3.000  CR STD  
5.000  CR STD

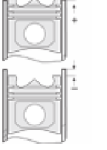
Goetze® LKZ-Ring®



**Silindir Gömleği**  
(Liner)



**Silindir Kit**  
(Assembly Set)



**Piston - Blok Montaj**  
Yüksekliği  
(Piston - Block  
Assembly Height)





IVECO LKW - Ø 120

87-70757-STD A



**Motor Özellikleri**  
(Engine Specifications)

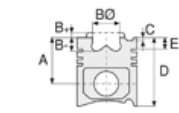
İmalatçı (Manufacturer):  
IVECO LKW  
Çap (Diameter): Ø 120  
FM Grup No: 4060

**8460.41.320.406**  
C/K/L/R

6 Sil. Dizel 9500cc  
276 Kw(375 PS) 17:1  
Turbo intercool  
EUROTECH-180 E 30R,  
180 E 3R, 190 E 30,  
190 E 38, 240 E 38,  
440 E 38P, 440 E 38T,  
EUROTRAKKER 380  
E 34H, MT 180 E 34,  
MT 400 E 34  
1991....

**8460.21B.613/615**

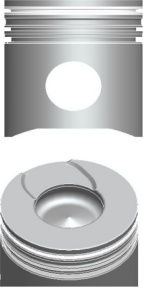
6 Sil. Dizel 9500cc  
180 E30, 180 E34,  
190 E30, 240 E 38,  
380 E34, 400 E34,  
400 E38, 440 E38,  
480 TURBOCITY,  
490, 5522, 580  
TURBOCITY, 590 E22  
1988....



**Piston Ölçüleri**  
(Piston Dimensions)

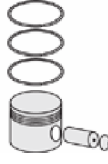
A : 84.700  
B- : 27.000  
BØ : 60.000  
C1 : 3.180  
D : 134.700  
E : 9.500

Pim: 48 x 108



**Piston Özellikleri**  
(Piston Features)

Segman Taşıyıcı  
(Ring Carrier)  
Soğutma Kanallı  
(Coolin Gallery)  
Yağ Püskürtme Oyuğu  
(Oil Jet Cut-out)  
Gözarası Konik  
(Conical Eye Gap)



**Piston Parça No**  
(Piston Part No)

87-854900-12  
87-70757-STD A

87-785300-02  
87-70757-STD B



**Segman Seti**  
(Ring Set)

06-854900-20-STD

3.500 CR KV1  
3.000 CR IKA  
5.000 CR STD

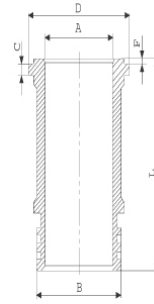
06-785300-20-STD

3.500 CR KV1  
3.000 CR STD  
5.000 CR STD



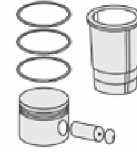
**Silindir Gömleği**  
(Liner)

14-450020-00-WH  
B : 134.000  
L : 249.250  
D : 144.800  
C : 10.100  
F : 1.000



Dış Yüzeyi Fosfat Kaplı  
(Outer Surface  
Phosphate Coated)

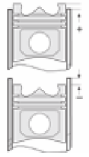
14-450020-00-WH  
Dış Yüzeyi Fosfat Kaplı  
(Outer Surface  
Phosphate Coated)



**Silindir Kit**  
(Assembly Set)

88-854900-12-STD  
88-70757-STD A

88-785300-02-STD  
88-70757-STD B



**Piston - Blok Montaj**  
Yüksekliği  
(Piston - Block  
Assembly Height)

+0,36 / +0,84







IVECO LKW - Ø 120

87-70758-STDA



**Motor Özellikleri**  
(Engine Specifications)

İmalatçı (Manufacturer):  
IVECO LKW  
Çap (Diameter): Ø 120  
FM Grup No: 4063

**8460.41E EURO2**  
6 Sil. Dizel 9498cc  
276 Kw ( 375 PS)  
Ap160, AP160.26,  
AP160/12.26,  
AP160.26, AP160/12.26

**Piston Ölçüleri**  
(Piston Dimensions)

A : 84.700  
B - : 27.400  
BØ : 60.000  
C1 : 3.180  
C2 : 3.180  
D : 134.700  
E : 9.500

Pim: 48 x 96



**Piston Özellikleri**  
(Piston Features)

Segman Taşıyıcı  
(Ring Carrier)  
Soğutma Kanallı  
(Coolin Gallery)  
Yağ Püskürtme Oyuğu  
(Oil Jet Cut-out)  
Burçlu Piston  
(Bushing Piston)  
Gözarası Konik  
(Conical Eye Gap)



**Piston Parça No**  
(Piston Part No)

87-854900-32  
87-70758-STDA



**Segman Seti**  
(Ring Set)

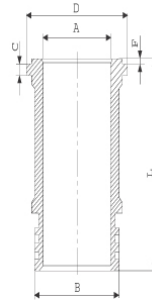
06-854900-20-STD

3.500 CR KV1  
3.000 CR IKA  
5.000 CR STD

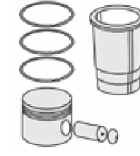


**Silindir Gömleği**  
(Liner)

14-450020-00-WH  
B : 134.000  
L : 249.250  
D : 144.800  
C : 10.100  
F : 1.000

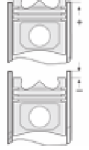


Dış Yüzeyi Fosfat Kaplı  
(Outer Surface  
Phosphate Coated)



**Silindir Kit**  
(Assembly Set)

88-854900-32-STD  
88-70758-STDA



**Piston - Blok Montaj**  
Yüksekliği  
(Piston - Block  
Assembly Height)

+0,36 / +0,84





IVECO TRK - Ø 125

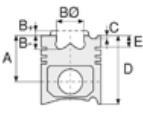
06-836000-20-STD



**Motor Özellikleri**  
(Engine Specifications)

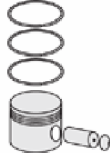
İmalatçı (Manufacturer):  
IVECO LKW  
Çap (Diameter): Ø 125  
FM Grup No: 4125

8200.03/13  
6 Sil. Dizel 10300cc 16,7:1  
1974....



**Piston Ölçüleri**  
(Piston Dimensions)

**Piston Özellikleri**  
(Piston Features)



**Piston Parça No**  
(Piston Part No)



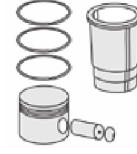
**Segman Seti**  
(Ring Set)



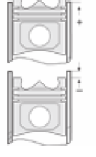
**Silindir Gömleği**  
(Liner)

06-836000-20-STD

3.500 CRP IKA  
3.000 STD  
3.000 STD  
5.500 CRP STD



**Silindir Kit**  
(Assembly Set)



**Piston - Blok Montaj**  
Yüksekliği  
(Piston - Block  
Assembly Height)





IVECO LKW - Ø 125

87-72859-STD

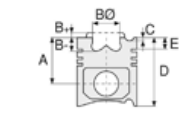


**Motor Özellikleri**  
(Engine Specifications)

İmalatçı (Manufacturer):  
IVECO LKW  
Çap (Diameter): Ø 125  
FM Grup No: 4073

**CURSOR 10 EURO 5**

6 Sil. Dizel 10308cc  
316 KW-450 HP  
F3 AE 3681 A EURO5 /  
F3 AE 3681 B EURO5 /  
F3 AE 3681 D EURO5  
EUROTRAKKER  
2009....



**Piston Ölçüleri**  
(Piston Dimensions)

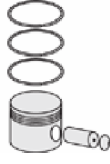
A : 85.500  
B - : 21.200  
BØ : 88.000  
D : 133.500  
E : 7.500

Pim: 50 x 101



**Piston Özellikleri**  
(Piston Features)

Segman Taşıyıcı  
(Ring Carrier)  
Soğutma Kanallı  
(Coolin Gallery)  
Yağ Püskürtme Oyuğu  
(Oil Jet Cut-out)  
Burçlu Piston  
(Bushing Piston)  
Gözarası Konik  
(Conical Eye Gap)



**Piston Parça No**  
(Piston Part No)

87-829000-02  
87-72859-STD



**Segman Seti**  
(Ring Set)

06-829000-20-STD

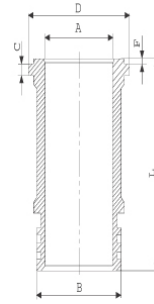
2.500 CK KV4  
3.000 P F14  
4.000 CR GOE13

Goetze® LKZ-Ring®



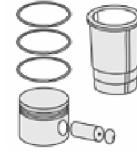
**Silindir Gömleği**  
(Liner)

14-260040-00-WH  
B : 140.000  
L : 240.200  
D : 150.600  
C : 9.960  
F : 1.200



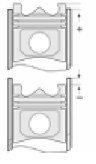
O-RING Bilgi /  
Dış Yüzeyi Fosfat  
Kaplı (O RING  
Information / Outer  
Surface Phosphate  
Coated)

24-35047-40/O  
1x 132,94\*3,53 FPM  
2x 132,94\*3,53 FPM  
Şim: 1x144\*151\*0,15



**Silindir Kit**  
(Assembly Set)

89-829000-02-STD  
89-72859-STD



**Piston - Blok Montaj**  
Yüksekliği  
(Piston - Block  
Assembly Height)

+0,28 / +0,52





IVECO LKW - Ø 125

87-72879-STD



**Motor Özellikleri**  
(Engine Specifications)

İmalatçı (Manufacturer):  
IVECO LKW  
Çap (Diameter): Ø 125  
FM Grup No: 4029

**F3A CURSOR 10**  
**TCA EURO 3**

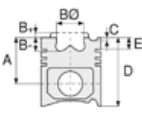
6 Sil. Dizel 10303cc  
287-316 KW  
(390-430 PS) 17:1  
190 E43, 260 E39,  
260 E43, 440 E39,  
440 E43, EUROTRAKER  
190 E39  
2000....

**F3AE 0681 DA**  
**CURSOR 10 EURO 3**

6 Sil. Dizel 10303cc  
287-316 KW  
(390-430 PS) 17:01  
190 E43, 260 E39,  
260 E43, 440 E39,  
440 E43, EUROTRAKER  
190 E39  
2000....

**F3AE 0681 EA**  
**CURSOR 10 EURO 3**

6 Sil. Dizel 10303cc  
287-316 Kw  
(390-430 PS) 17:1  
190 E43, 260 E39,  
260 E43, 440 E39,  
440 E43,  
EUROTRAKER 190 E39  
2000....



**Piston Ölçüleri**  
(Piston Dimensions)

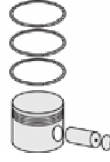
A : 85.500  
B - : 21.200  
BØ : 88.000  
D : 133.500  
E : 9.250

Pim: 50 x 101



**Piston Özellikleri**  
(Piston Features)

Segman Taşıyıcı  
(Ring Carrier)  
Soğutma Kanallı  
(Coolin Gallery)  
Yağ Püskürtme Oyuğu  
(Oil Jet Cut-out)  
Gözarası Konik  
(Conical Eye Gap)



**Piston Parça No**  
(Piston Part No)

87-121900-22  
87-72879-STD

87-121900-02  
87-72879 STD



**Segman Seti**  
(Ring Set)

06-121900-40-STD

3.500  CK KV1  
3.000  NT F14  
4.000  CR GOE

Goetze® LKZ-Ring®

06-121900-40-STD

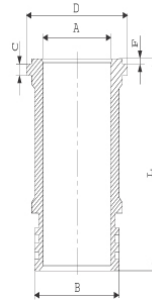
3.500  CK KV1  
3.000  NT F14  
4.000  CR GOE

Goetze® LKZ-Ring®

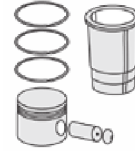


**Silindir Gömleği**  
(Liner)

14-260040-00-WH  
B : 140.000  
L : 240.200  
D : 150.600  
C : 9.960  
F : 1.200

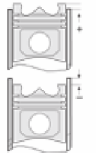


O-RING Bilgi /  
Dış Yüzeyi Fosfat  
Kaplı  
(O-RING Information /  
Outer Surface  
Phosphate Coated)  
24-35047-40/O  
1x 132,94\*3,53 FPM  
2x 132,94\*3,53 FPM  
Şim: 1x144\*151\*0,15



**Silindir Kit**  
(Assembly Set)

88-121900-02-STD  
88-72879-STD



**Piston - Blok Montaj**  
**Yüksekliği**  
(Piston - Block  
Assembly Height)

+0,28/ +0,52





IVECO LKW - Ø 130

14-018002-00-D



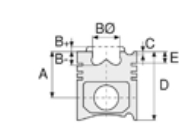
**Motor Özellikleri**  
(Engine Specifications)

İmalatçı (Manufacturer):  
IVECO LKW  
Çap (Diameter): Ø 130  
FM Grup No: 4069

**203 A/61**  
6 Sil. Dizel 11548cc  
130 kW(177 PS) 16:1

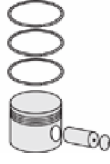
**203 H 61**  
6 Sil. Dizel 11548cc  
132 kW(180 PS) 16:1

**310 H/61**  
6 Sil. Dizel 11548cc 16:1  
410, 410 A



**Piston Ölçüleri**  
(Piston Dimensions)

**Piston Özellikleri**  
(Piston Features)



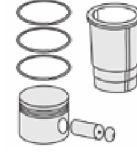
**Piston Parça No**  
(Piston Part No)



**Segman Seti**  
(Ring Set)

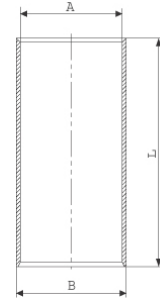


**Silindir Gömleği**  
(Liner)

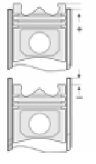


**Silindir Kit**  
(Assembly Set)

14-018002-00-D  
B : 136.100  
L : 282.000



Diştan 0,08 mm Farklı  
(Outer 0.08 mm  
Different)



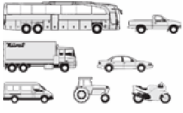
**Piston - Blok Montaj**  
Yüksekliği  
(Piston - Block  
Assembly Height)





IVECO LKW - Ø 135

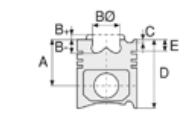
87-71700-STD



**Motor Özellikleri**  
(Engine Specifications)

İmalatçı (Manufacturer):  
IVECO LKW  
Çap (Diameter): Ø 135  
FM Grup No: 4081

**F3B3681A EURO 4/5**  
6 Sil. Dizel 12880cc  
301-412 KW-410-510 PS  
CURSOR 13 E56



**Piston Ölçüleri**  
(Piston Dimensions)

A : 90.400  
B- : 23.100  
BØ : 94.000  
D : 142.400  
E : 7.500

Pim: 54 x 107



**Piston Özellikleri**  
(Piston Features)

Segman Taşıyıcı  
(Ring Carrier)  
Soğutma Kanallı  
(Coolin Gallery)  
Yağ Püskürtme Oyuğu  
(Oil Jet Cut-out)  
Burçlu Piston  
(Bushing Piston)  
Gözarası Konik  
(Conical Eye Gap)



**Piston Parça No**  
(Piston Part No)

87-428000-02  
87-71700-STD



**Segman Seti**  
(Ring Set)

06-428000-20-STD

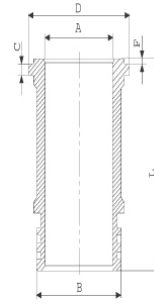
3.000 CKS KV1  
3.000 CR F14  
5.000 CR GOE

Goetze® LKZ-Ring®

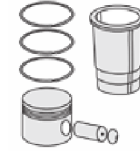


**Silindir Gömleği**  
(Liner)

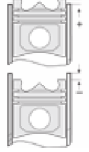
14-260050-00-WH  
B : 151.000  
L : 254.000  
D : 161.600  
C : 9.960  
F : 1.200



Dış Yüzeyi Fosfat  
Kaplı / O-RING Bilgi  
(Outer Surface  
Phosphate Coated /  
O-RING Information)  
24-35043-80/O  
3x 145,60\*3,53 FPM



**Silindir Kit**  
(Assembly Set)



**Piston - Blok Montaj**  
Yüksekliği  
(Piston - Block  
Assembly Height)





IVECO LKW - Ø 135

87-72883-STD



**Motor Özellikleri**  
(Engine Specifications)

İmalatçı (Manufacturer):  
IVECO LKW  
Çap (Diameter): Ø 135  
FM Grup No: 4067

**F3B0681 Cb401/  
402/411 Cursor13**  
Euro3

6 Sil. Dizel 12882cc  
279/324/338/353/397  
Kw(380/440/460/  
480/540)

Turbo, Intercooler

Eurotrakker MP 260E38H,  
Eurotrakker MP 260E38W,  
Eurotrakker MP 340E38H,  
Eurotrakker MP 340E38HB,  
Eurotrakker MP 380E38H,  
Eurotrakker MP 380E38W,  
Eurotrakker MP 410E38H,  
Eurotrakker MP190,  
Eurotrakker MP190E38W,  
Eurotrakker MPU 410E38H,  
Trakker AD 190T38,  
Trakker AD 190T38W,  
Trakker AD 260T38,  
Trakker AT 190T38,  
Trakker AT 190T38W,  
Trakker AT 260T38  
2000....

**Piston Ölçüleri**  
(Piston Dimensions)

A : 90.400  
B- : 23.100  
BØ : 94.000  
D : 142.400  
E : 8.900

Pim: 54 x 107,5

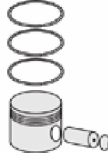


**Piston Özellikleri**  
(Piston Features)

Segman Taşıyıcı  
(Ring Carrier)  
Soğutma Kanallı  
(Coolin Gallery)  
Yağ Püskürtme Oyuğu  
(Oil Jet Cut-out)  
Gözarası Konik  
(Conical Eye Gap)

**Piston Parça No**  
(Piston Part No)

87-122000-02  
87-72883-STD



**Segman Seti**  
(Ring Set)

06-122000-20-STD

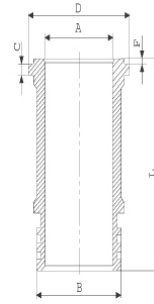
4.000 CK KV1  
3.000 CR F14  
5.000 CR GOE

Goetze® LKZ-Ring®



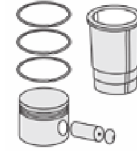
**Silindir Gömleği**  
(Liner)

14-260050-00-WH  
B : 151.000  
L : 254.000  
D : 161.600  
C : 9.960  
F : 1.200



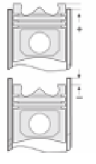
Dış Yüzeyi Fosfat  
Kaplı / O-RING Bilgi  
(Outer Surface  
Phosphate Coated /  
O RING Information)  
24-35043-80/O  
3x 145,60\*3,53 FPM

**Silindir Kit**  
(Assembly Set)



**Piston - Blok Montaj**  
Yüksekliği  
(Piston - Block  
Assembly Height)

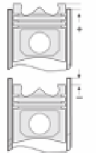
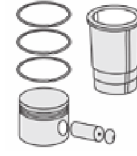
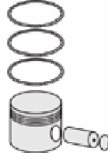
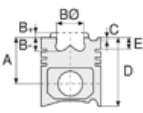
000/0,50





IVECO LKW - Ø 137

06-207800-20-STD



**Motor Özellikleri**  
(Engine Specifications)

**Piston Ölçüleri**  
(Piston Dimensions)

**Piston Parça No**  
(Piston Part No)

**Segman Seti**  
(Ring Set)

**Silindir Gömleği**  
(Liner)

**Silindir Kit**  
(Assembly Set)

**Piston - Blok Montaj**  
**Yüksekliği**  
(Piston - Block  
Assembly Height)

İmalatçı (Manufacturer):  
IVECO LKW  
Çap (Diameter): 137  
FM Grup No: 4032


**8215.02**  
6 Sil. Dizel 13798cc 16:01  
180C, 200C, AD18, AD20,  
BD18, BD20, BM21, FD20,  
FE40, PC, PL, PL60  
1971...

**8215.22.520**  
6 Sil. Dizel 13798cc 16:01  
Turbo  
FD20, FL20, PL60  
1984 - 1991

**8210.22**  
6 Sil. Dizel 13798cc 16:01  
Turbo  
MX300  
1980 - 1991

6 Sil. Dizel 191-233 Kw  
(260-304 PS) 16:01  
Turbo  
160.26, 170 NC 26, 170.26,  
180 N, 180 NC, 180 NT,  
180.26, 190 NC 26, 190  
PAC26, 190 PAT 26,  
190.26 H

06-207800-20-STD

4.000  CR KV1  
3.000  STD  
3.000  STD  
5.500  CR STD







IVECO LKW - Ø 137

87-70763-STDB



**Motor Özellikleri**  
(Engine Specifications)

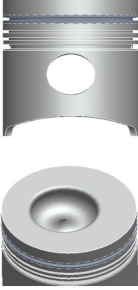
İmalatçı (Manufacturer):  
IVECO LKW  
Çap (Diameter): Ø 137  
FM Grup No: 4022

8210.02.00/221A,  
8210.12.0, 8215.02  
6 Sil. Dizel 13800cc  
162/191 Kw  
(220/260 PS) 16:1  
Direkt Püskürtme  
(Direct Spray)  
Motor no:003891-->  
170, 180, 190, 260,  
300, 370, 421, 619/697  
1972 - 1981

**Piston Ölçüleri**  
(Piston Dimensions)

A : 92.000  
B- : 32.400  
BØ : 67.000  
BX : 5.000  
D : 167.000  
E : 23.000

Pim: 48 x 117,5



**Piston Özellikleri**  
(Piston Features)

Segman Taşıyıcı  
(Ring Carrier)  
Gözarası Düz  
(Flat Eye Gap)



**Piston Parça No**  
(Piston Part No)

87-781300-12  
87-70763-STDB



**Segman Seti**  
(Ring Set)

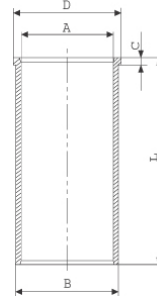
06-781300-20-STD  
4.000 CR KV1  
3.000 P STD  
3.000 P STD  
5.500 CRP STD

Goetze® LKZ-Ring®



**Silindir Gömleği**  
(Liner)

14-021560-10-DH  
B : 143.000  
L : 282.000  
D : 147.000  
C : 6.000



14-021561-10-DH  
B : 143.050  
L : 282.000  
D : 147.000  
C : 6.000

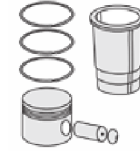
Dış Çap 0,05 MM  
Farklı (Outside  
Diameter  
0,05 mm Different)

14-021562-10-DH  
B : 143.250  
L : 282.000  
D : 147.000  
C : 6.000

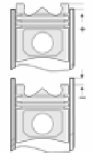
Dış Çap 0,25 MM  
Farklı (Outside  
Diameter  
0,25 mm Different)

14-021563-10-DH  
B : 143.500  
L : 282.000  
D : 147.000  
C : 6.000

Dış Çap 0,50 MM  
Farklı (Outside  
Diameter  
0,50 mm Different)



**Silindir Kit**  
(Assembly Set)



**Piston - Blok Montaj**  
Yüksekliği  
(Piston - Block  
Assembly Height)

-0,270 / +0,220





IVECO LKW - Ø 137

87-70785-STDB



**Motor Özellikleri**  
(Engine Specifications)

İmalatçı (Manufacturer):  
IVECO LKW  
Çap (Diameter): Ø 137  
FM Grup No: 4023

**8210.22S**

6 Sil. Dizel 13798cc  
243 Kw (330 PS) 15:1  
Turbo Intercooled  
190, 190  
1984....

**8210.22.000**

6 Sil. Dizel 13798cc  
223,5 Kw (304 PS) 15:1  
Turbocharge  
170, 190, 240, 260, 370  
1980....

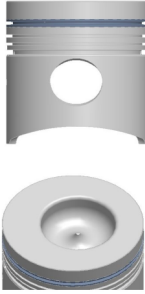
**8215.22**

6 Sil. Dizel 13798cc  
173 Kw (235 PS) 15:1  
Turbocharge  
RAUPE FL20,  
RAUPE FR20  
1987 - 1991

**Piston Ölçüleri**  
(Piston Dimensions)

A : 92.000  
B - : 33.000  
BØ : 72.000  
BX : 5.000  
D : 162.000  
E : 23.000

Pim: 50 x 117



**Piston Özellikleri**  
(Piston Features)

Segman Taşıyıcı  
(Ring Carrier)  
Sert Anotlama  
(Hard Anodizing)  
Soğutma Kanallı  
(Coolin Gallery)  
Gözarası Konik  
(Conical Eye Gap)

**Piston Parça No**  
(Piston Part No)

87-030460-02  
87-70785-STDB

87-207800-02  
87-70785-STDD

**Segman Seti**  
(Ring Set)

06-030460-20-STD

4.000 CRP KV1  
3.000 CRP IKA  
3.000 P STD  
5.500 CRP STD

Goetze® LKZ-Ring®

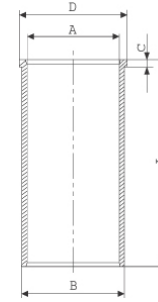
06-030460-20-STD

4.000 CR KV1  
3.000 STD  
3.000 STD  
5.500 CR STD

**Silindir Gömleği**  
(Liner)

14-021560-10-DH

B : 143.000  
L : 282.000  
D : 147.000  
C : 6.000



14-021561-10-DH

B : 143.050  
L : 282.000  
D : 147.000  
C : 6.000

Dış Çap 0,05 MM  
Farklı (Outside  
Diameter  
0,05 mm Different)

14-021562-10-DH

B : 143.250  
L : 282.000  
D : 147.000  
C : 6.000

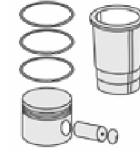
Dış Çap 0,25 MM  
Farklı (Outside  
Diameter  
0,25 mm Different)

14-021563-10-DH

B : 143.500  
L : 282.000  
D : 147.000  
C : 6.000

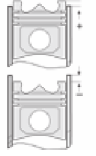
Dış Çap 0,50 MM  
Farklı (Outside  
Diameter  
0,50 mm Different)

**Silindir Kit**  
(Assembly Set)



**Piston - Blok Montaj**  
Yüksekliği  
(Piston - Block  
Assembly Height)

- 0,275 / + 0,225





IVECO LKW - Ø 137

87-70786-STD A



**Motor Özellikleri**  
(Engine Specifications)

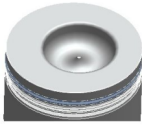
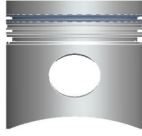
İmalatçı (Manufacturer):  
IVECO LKW  
Çap (Diameter): Ø 137  
FM Grup No: 4024

**8210.42.000**  
6 Sil. Dizel 13798cc  
265 Kw (195PS) 15:1  
Turbo Intercooled  
190.36, 240.36,  
330.36, 340.36  
TURBO STAR  
1988....

**Piston Ölçüleri**  
(Piston Dimensions)

A : 92.000  
B- : 33.000  
BØ : 72.000  
BX : 5.000  
D : 157.000  
E : 20.000

Pim: 50 x 117



**Piston Özellikleri**  
(Piston Features)

Segman Taşıyıcı  
(Ring Carrier)  
Soğutma Kanallı  
(Coolin Gallery)  
Yağ Püskürtme Oyuğu  
(Oil Jet Cut-out)  
Gözarası Konik  
(Conical Eye Gap)



**Piston Parça No**  
(Piston Part No)

87-783000-12  
87-70786-STD A

87-836500-42  
87-70786-STDB

87-783000-82  
87-70786-STD C



**Segman Seti**  
(Ring Set)

06-783000-20-STD

4.000 CR KV1  
3.000 CR IKA  
5.500 CR STD

Goetze® LKZ-Ring®

06-836500-20-STD

4.000 CR KV1  
3.000 CR IKA  
5.500 CR STD

Goetze® LKZ-Ring®

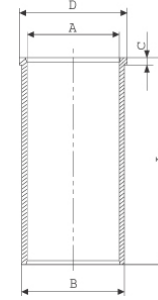
06-783000-40-STD

4.000 CR KV1  
3.000 F14  
5.500 CR GOE



**Silindir Gömleği**  
(Liner)

14-021560-10-DH  
B : 143.000  
L : 282.000  
D : 147.000  
C : 6.000



14-021561-10-DH  
B : 143.050  
L : 282.000  
D : 147.000  
C : 6.000

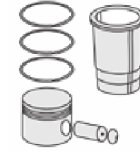
Dış Çap 0,05 MM  
Farklı (Outside  
Diameter 0,05 mm  
Different)

14-021562-10-DH  
B : 143.250  
L : 282.000  
D : 147.000  
C : 6.000

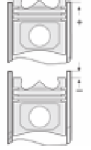
Dış Çap 0,25 MM  
Farklı (Outside  
Diameter 0,25 mm  
Different)

14-021563-10-DH  
B : 143.500  
L : 282.000  
D : 147.000  
C : 6.000

Dış Çap 0,50 MM  
Farklı (Outside  
Diameter 0,50 mm  
Different)



**Silindir Kit**  
(Assembly Set)



**Piston - Blok Montaj**  
Yüksekliği  
(Piston - Block  
Assembly Height)

- 0,27 / + 0,20





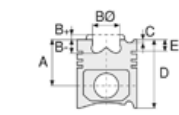
**Motor Özellikleri**  
(Engine Specifications)

İmalatçı (Manufacturer):  
IVECO LKW  
Çap (Diameter): Ø 137  
FM Grup No: 4025

**8210.42.K / TRM 40 / TRM 45**

6 Sil. Dizel 13798cc  
272 Kw (370 PS) 16,5:1  
Turbocharge

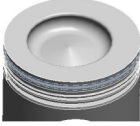
Motor no: --> 294803  
190 E 37 EUROTRAKKER,  
190 E37 EUROTRAKKER,  
260 E37 EUROTRAKKER,  
330 E37 EUROTRAKKER,  
380 E37 EUROTRAKKER,  
400 E37 EUROTRAKKER,  
440 E37 EUROTRAKKER,  
720 E37 EUROTRAKKER  
1990....



**Piston Ölçüleri**  
(Piston Dimensions)

A : 92.000  
B - : 21.000  
BØ : 83.800  
BX : 3.000  
D : 157.000  
E : 8.000

Pim: 50 x 115



**Piston Özellikleri**  
(Piston Features)

Segman Taşıyıcı  
(Ring Carrier)  
Sert Anotlama  
(Hard Anodizing)  
Soğutma Kanallı  
(Coolin Gallery)  
Yağ Püskürtme Oyuğu  
(Oil Jet Cut-out)  
Gözarası Konik  
(Conical Eye Gap)



**Piston Parça No**  
(Piston Part No)

87-783000-33  
87-70787-STD1A  
- 0,20 mm kısa  
87-783000-32  
87-70787-STD A

87-836500-22  
87-70787-STD B

87-783000-14  
87-70787-STD D

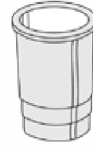


**Segman Seti**  
(Ring Set)

06-783000-20-STD  
4.000 CR KV1  
3.000 CR IKA  
5.500 CR STD  
Goetze® LKZ-Ring®

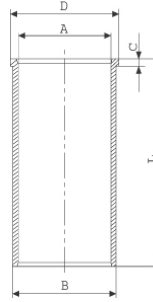
06-836500-20-STD  
4.000 CR KV1  
3.000 CR IKA  
5.500 CR STD  
Goetze® LKZ-Ring®

06-783000-40-STD  
4.000 CR KV1  
3.000 F14  
5.500 CR GOE



**Silindir Gömleği**  
(Liner)

14-020230-10-DH  
B : 143.000  
L : 282.000  
D : 149.000  
C : 6.000



Dış Yüzeyi Fosfat  
Kaplı (Outer Surface  
Phosphated Covered)

14-020231-10-DH  
B : 143.050  
L : 282.000  
D : 149.000  
C : 6.000

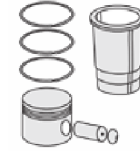
Dış Çap 0,05 mm  
Farklı (Outer Diameter  
0,05 mm Different)

14-020232-10-DH  
B : 143.250  
L : 282.000  
D : 149.000  
C : 6.000

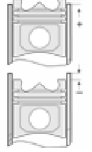
Dış Çap 0,25 mm  
Farklı (Outer Diameter  
0,25 mm Different)

14-020233-10-DH  
B : 143.500  
L : 282.000  
D : 149.000  
C : 6.000

Dış Çap 0,50 mm  
Farklı - Fosfat Kaplı  
(Outer Diameter 0,50  
mm Different -  
Phosphated Coated)



**Silindir Kit**  
(Assembly Set)



**Piston - Blok Montaj**  
Yüksekliği  
(Piston - Block  
Assembly Height)

- 0,27 / + 0,22





IVECO LKW - Ø 137

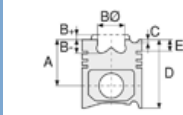
87-72886-STD



**Motor Özellikleri**  
(Engine Specifications)

İmalatçı (Manufacturer):  
IVECO LKW  
Çap (Diameter): Ø 137  
FM Grup No: 4056

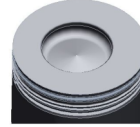
8210.42  
6 Sil. Dizel  
190 E 37 EUROTRAKKER



**Piston Ölçüleri**  
(Piston Dimensions)

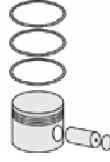
A : 92.000  
B - : 25.400  
BØ : 72.000  
BX : 3.000  
D : 157.000  
E : 8.000

Pim: 50 x 115



**Piston Özellikleri**  
(Piston Features)

Segman Taşıyıcı  
(Ring Carrier)  
Soğutma Kanallı  
(With Cooling Channel)  
Yağ Püskürtme Oyuğu  
(Oil Spray Groove)  
Gözarası Konik  
(Conical Eye Gap)



**Piston Parça No**  
(Piston Part No)

87-836500-02  
87-72886-STD

87-783000-72  
87-72886-STDF



**Segman Seti**  
(Ring Set)

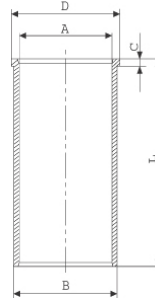
06-836500-20-STD  
4.000 CR KV1  
3.000 CR IKA  
5.500 CR STD  
Goetze® LKZ-Ring®

06-783000-40-STD  
4.000 CR KV1  
3.000 CR F14  
5.500 CR GOE



**Silindir Gömleği**  
(Liner)

14-020230-10-DH  
B : 143.000  
L : 282.000  
D : 149.000  
C : 6.000



Dış Yüzeyi Fosfat  
Kaplı (Outer Surface  
Phosphated Covered)

14-020231-10-DH  
B : 143.050  
L : 282.000  
D : 149.000  
C : 6.000

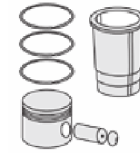
Dış Çap 0,05 mm  
Farklı (Outer Diameter  
0,05 mm Different)

14-020232-10-DH  
B : 143.250  
L : 282.000  
D : 149.000  
C : 6.000

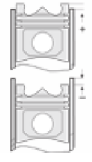
Dış Çap 0,25 mm  
Farklı (Outer Diameter  
0,25 mm Different)

14-020233-10-DH  
B : 143.500  
L : 282.000  
D : 149.000  
C : 6.000

Dış Çap 0,50 mm  
Farklı - Fosfat Kaplı  
(Outer Diameter 0,50  
mm Different -  
Phosphated Coated)

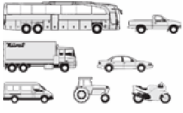


**Silindir Kit**  
(Assembly Set)

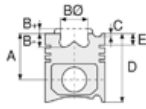


**Piston - Blok Montaj**  
Yüksekliği  
(Piston - Block  
Assembly Height)





**Motor Özellikleri**  
(Engine Specifications)



**Piston Ölçüleri**  
(Piston Dimensions)



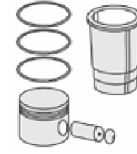
**Piston Parça No**  
(Piston Part No)



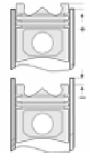
**Segman Seti**  
(Ring Set)



**Silindir Gömleği**  
(Liner)



**Silindir Kit**  
(Assembly Set)



**Piston - Blok Montaj**  
Yüksekliği  
(Piston - Block  
Assembly Height)

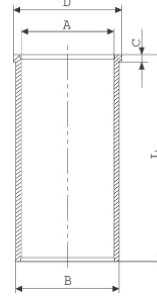
14-021560-10-DH

B : 143.000

L : 282.000

D : 147.000

C : 6.000



14-021561-10-DH

B : 143.050

L : 282.000

D : 147.000

C : 6.000

Dış Çap 0,05 mm  
Farklı (Outer Diameter  
0,05 mm Different)

14-021562-10-DH

B : 143.250

L : 282.000

D : 147.000

C : 6.000

Dış Çap 0,25 mm  
Farklı (Outer Diameter  
0,25 mm Different)

14-021563-10-DH

B : 143.500

L : 282.000

D : 147.000

C : 6.000

Dış Çap 0,50 mm  
Farklı (Outer Diameter  
0,50 mm Different)





IVECO LKW - Ø 137

87-72888-STD A

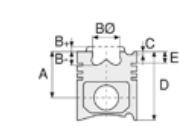


**Motor Özellikleri**  
(Engine Specifications)

İmalatçı (Manufacturer):  
IVECO LKW  
Çap (Diameter): 137  
FM Grup No: 4208

**8210.42.K**  
6 Sil. Dizel 13798cc  
272 Kw (370 PS) 16:1  
Turbocharge  
190 E37 EUROTRAKKER,  
260 E37 EUROTRAKKER,  
340 E37 EUROTRAKKER,  
380 E37 EUROTRAKKER,  
400 E37 EUROTRAKKER,  
410 E37 EUROTRAKKER,  
440 E37 EUROTRAKKER,  
720 E37 EUROTRAKKER  
1996....

**8210.42.K EURO2**  
6 Sil. Dizel 13798cc  
309 Kw (420 PS) 16:1  
Turbo Intercooled  
180 E42 EUROTCH,  
190 E42 EUROTCH,  
190 E42 EUROTCH,  
190 E42 EUROTRAKKER,  
240 E42 EUROTCH,  
260 E42 EUROTCH,  
260 E42 EUROTRAKKER,  
380 E42 EUROTRAKKER,  
400 E42 EUROTCH,  
400 E42 EUROTCH,  
440 E42 EUROTCH,  
440 E42 EUROTCH,  
440 E42 EUROTRAKKER  
1996....



**Piston Ölçüleri**  
(Piston Dimensions)

A : 92.000  
B- : 25.450  
BØ : 71.900  
BX : 3.000  
D : 157.000  
E : 8.000

Pim: 50 x 115



**Piston Özellikleri**  
(Piston Features)

Segman Taşıyıcı  
(Ring Carrier)  
Soğutma Kanallı  
(Coolin Gallery)  
Yağ Püskürtme Oyuğu  
(Oil Jet Cut-out)  
Burçlu Piston  
(Bushing Piston)  
Gözarası Konik  
(Conical Eye Gap)



**Piston Parça No**  
(Piston Part No)

87-783000-53  
87-72888-STD1A  
0,20 mm Kısa (Short)  
  
87-783000-52  
87-72888-STD A



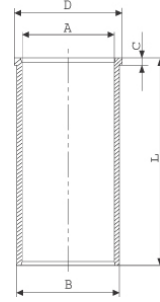
**Segman Seti**  
(Ring Set)

06-783000-20 STD  
  
4.000 CR KV1  
3.000 CR IKA  
5.500 CR STD  
  
Goetze® LKZ-Ring®



**Silindir Gömleği**  
(Liner)

14-020230-10-DH  
B : 143.000  
L : 282.000  
D : 149.000  
C : 6.000



DIŞ YÜZEYİ FOSFAT  
KAPLI (Outer Surface  
Phosphate Coated)

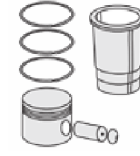
14-020231-10-DH  
B : 143.050  
L : 282.000  
D : 149.000  
C : 6.000

DIŞ ÇAP 0,05 MM  
FARKLI (Outer  
Diameter 00,5mm  
Different)

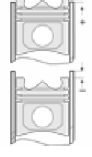
14-020232-10-DH  
B : 143.250  
L : 282.000  
D : 149.000  
C : 6.000

DIŞ ÇAP 0,25 MM  
FARKLI -(Outer  
Diameter 0,25mm  
Different)

14-020233-10-DH  
B : 143.500  
L : 282.000  
D : 149.000  
C : 6.000



**Silindir Kit**  
(Assembly Set)



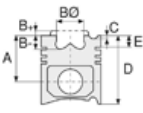
**Piston - Blok Montaj**  
**Yüksekliği**  
(Piston - Block  
Assembly Height)

0,00 / 0,20

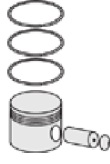




**Motor Özellikleri**  
(Engine Specifications)



**Piston Ölçüleri**  
(Piston Dimensions)



**Piston Parça No**  
(Piston Part No)

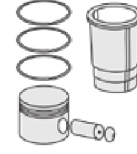


**Segman Seti**  
(Ring Set)

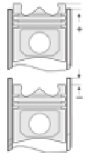


**Silindir Gömleği**  
(Liner)

DIŞ ÇAP 0,50 MM  
FARKLI (Outer Diameter  
0,50mm Different) -  
FOSFAT KAPLI  
(Phosphate Coated)

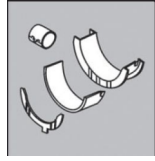


**Silindir Kit**  
(Assembly Set)



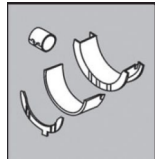
**Piston - Blok Montaj**  
**Yüksekliği**  
(Piston - Block  
Assembly Height)

**ANA YATAK**  
(MAIN BEARING)



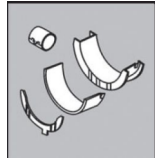
H-1047/7-STD

**EKSANTRİK YATAK**  
(ECCENTRIC BEARING)



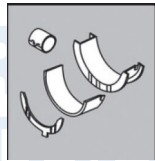
N174/4-STD

**KOL BURCU**  
(SMALL END BUSH)



55-4107 SEMİ

**KOL YATAK**  
(CONNECTING ROD BEARING)



71-4383/6-STD







IVECO LKW - Ø 145

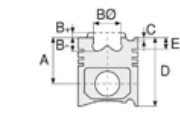
87-72895-STD



**Motor Özellikleri**  
(Engine Specifications)

İmalatçı (Manufacturer):  
IVECO LKW  
Çap (Diameter): 145  
FM Grup No: 4072

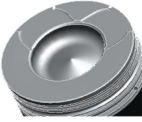
8280.42.350  
8 Sil. Dizel 17174cc 375  
KW (510 PS)  
190, 240, 260, 400, 440  
1989....



**Piston Ölçüleri**  
(Piston Dimensions)

A : 95.300  
B- : 23.800  
BØ : 80.000  
C1 : 0.800  
D : 157.300  
E : 9.200

Pim: 55 x 122



**Piston Özellikleri**  
(Piston Features)

Segman Taşıyıcı  
(Ring Carrier)  
Soğutma Kanallı  
(Coolin Gallery)  
Yağ Püskürtme Oyuğu  
(Oil Jet Cut-out)  
Gözarası Düz  
(Flat Eye Gap)



**Piston Parça No**  
(Piston Part No)

87-782100-02  
87-72895-STD



**Segman Seti**  
(Ring Set)

06-782100-20-STD

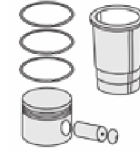
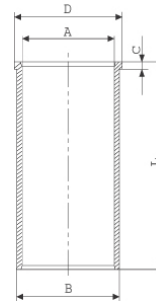
4.000 CR KV1  
3.000 CR IKA  
6.000 CR STD

Goetze® LKZ-Ring®



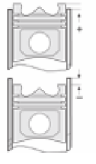
**Silindir Gömleği**  
(Liner)

14-481110-00-WH  
B : 158.500  
L : 262.000  
D : 174.000  
C : 10.900  
F : 0.850



**Silindir Kit**  
(Assembly Set)

88-782100-02-STD  
88-72895-STD



**Piston - Blok Montaj**  
**Yüksekliği**  
(Piston - Block  
Assembly Height)





IVECO LKW - Ø 145

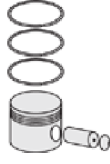
87-72895-STD



**Motor Özellikleri**  
(Engine Specifications)



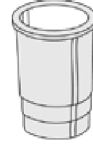
**Piston Ölçüleri**  
(Piston Dimensions)



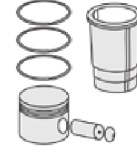
**Piston Parça No**  
(Piston Part No)



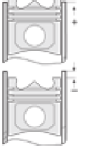
**Segman Seti**  
(Ring Set)



**Silindir Gömleği**  
(Liner)

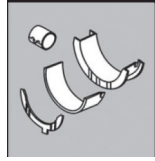


**Silindir Kit**  
(Assembly Set)



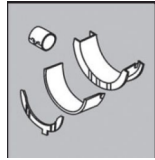
**Piston - Blok Montaj**  
**Yüksekliği**  
(Piston - Block  
Assembly Height)

**ANA YATAK**  
(MAIN BEARING)



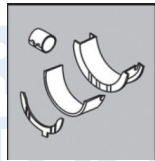
72-4548-STD

**KOL BURCU**  
(SMALL END BUSH)



55-4507 SEMI

**KOL YATAK**  
(CONNECTING ROD BEARING)



71-4108-STD



**FEDERAL-MOGUL**  
**POWERTRAIN**  
TÜRKİYE