

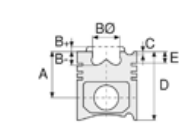


Motor Özellikleri
(Engine Specifications)

İmalatçı (Manufacturer):
IVECO TRK
Çap (Diameter): 85
FM Grup No: 4128

614.000
2 Sil. Dizel 1135cc 13
Kw(18 PS) 21.5:1
Angledozer 18, La Piccola
18

615.000
4 Sil. Dizel 2270cc
29.5 Kw(40 PS) 21.5:1
441R, 451 C, JC412R, R411,
R411J
1965 - 1968



Piston Ölçüleri
(Piston Dimensions)

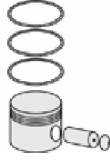
A : 50.300
B- : 4.500
D : 90.000
E : 7.500

Pim: 28 x 69



Piston Özellikleri
(Piston Features)

Gözarası Düz
(Flat Eye Gap)



Piston Parça No
(Piston Part No)

87-200000-02
87-70749-STD

87-200006-02
87-70749 040

87-200008-02
87-70749 060



Segman Seti
(Ring Set)

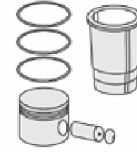
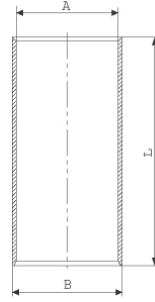
06-200000-10-STD
06-200006-10 0,40 mm
06-200008-10 0,60 mm

3.000 CRP IKA
3.000 P STD
3.000 P STD
5.500 CRP STD

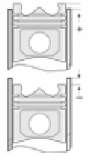


Silindir Gömleği
(Liner)

14-011240-00-D
B : 90.000
L : 178.000

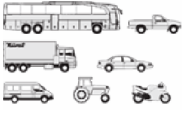


Silindir Kit
(Assembly Set)



Piston - Blok Montaj
Yüksekliği
(Piston - Block
Assembly Height)





Motor Özellikleri
(Engine Specifications)

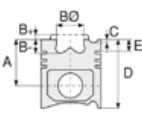
İmalatçı (Manufacturer):
IVECO TRK - TOYOTA
Çap (Diameter): Ø 95
FM Grup No: 4104

802.000
2 Sil. Dizel 1560cc
18,5 Kw (25 PS)

803.000 (8030.01)
3 Sil. Dizel 2339cc
28/33/37 Kw
(38/45/51 PS) 17:1
570 TURBO, 612 NE,
616 N2
1966 - 1971

804.000 (8040.01)
4 Sil. Dizel 3119cc
40/51,5 Kw (54/70 PS) 17:1
616 N2, 616 N4, 625 N1,
625 N2, ORSETTO
15L, 15N
1968 - 1971

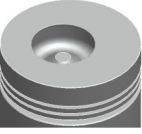
806.000
(**8060.01/11**)
6 Sil. Dizel 4678cc 81
Kw (110 PS) 17:1
UTB İle Ortak Motor
(Common Engine With
UTB)
416 A TRAKTOR, 645 N1,
645 N2, 650 N1, 650 N2,
655 N, 662 N1, 662 N2,
672 N2
1960 - 1971



Piston Ölçüleri
(Piston Dimensions)

A : 59.650
B- : 23.500
BØ : 42.500
BX : 5.000
D : 101.150
E : 19.600

Pim: 32 x 84



Piston Özellikleri
(Piston Features)

Gözarası Düz
(Flat Eye Gap)



Piston Parça No
(Piston Part No)

87-207200-02
87-70754-STD

87-207206-02
87-70754 040

87-207208-02
87-70754 060

87-207211-02
87-70754 100



Segman Seti
(Ring Set)

06-207200-10-STD
06-207206-10 0,40 mm
06-207208-10 0,60 mm
06-207211-10 1,00 mm

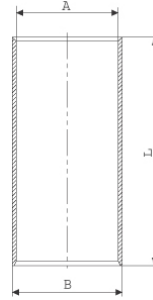
2.500 CRP KV1
2.500 P IKA
5.500 CRP STD



Silindir Gömleği
(Liner)

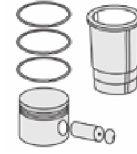
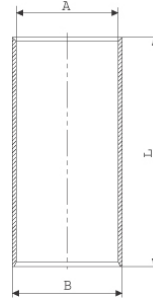
14-010620-00-D

B : 99.000
L : 187.000

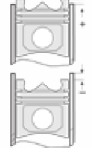


14-019870-00-D

B : 103.000
L : 187.000



Silindir Kit
(Assembly Set)



Piston - Blok Montaj
Yüksekliği
(Piston - Block
Assembly Height)

+ 0,46 / + 0,79





IVECO TRK - Ø 100

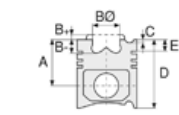
87-70620-STD



Motor Özellikleri
(Engine Specifications)

İmalatçı (Manufacturer):
IVECO TRK
Çap (Diameter): Ø100
FM Grup No: 4137

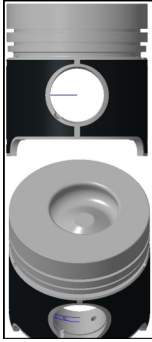
8035.06.200
3 Sil. Dizel 2708cc
33-41kw/45-56PS 17.0
TRAKTOR 54 C,
Traktör 55, Traktör 56
1985...



Piston Ölçüleri
(Piston Dimensions)

A : 65.300
B- : 19.850
B : 48.200
BX : 3.500
BY : 3.000
D : 108.750
E : 17.800

Pim: 38 x 85



Piston Özellikleri
(Piston Features)

Soğutma Kanallı
(Coolin Gallery)
Yağ Püskürtme Oyuğu
(Oil Jet Cut-out)
Gözarası düz
(Flat Eye Gap)



Piston Parça No
(Piston Part No)

87-836300-42
87-70620-STD

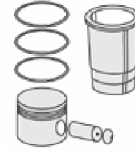


Segman Seti
(Ring Set)

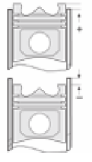
06-836300-30 STD
06-836306-30 0,40 mm
06-836308-30 0,60 mm
2.500 CRP KV1
2.500 P IKA
4.000 CRP STD



Silindir Gömleği
(Liner)

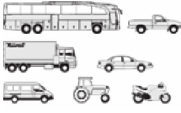


Silindir Kit
(Assembly Set)



Piston - Blok Montaj
Yüksekliği
(Piston - Block
Assembly Height)





Motor Özellikleri
(Engine Specifications)

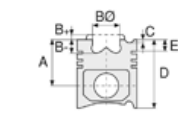
İmalatçı (Manufacturer):
IVECO TRK
Çap (Diameter): 100
FM Grup No: 4105

8025.02
2 Sil. Dizel 1728cc 24 Kw
(32 PS) 17:1
TRAKTOR 300, TRAKTOR
350, TRAKTOR 355
1973....

8030.02, 8035.02
3 Sil. Dizel 2592cc 37/45
Kw (50/62 PS) 17:1
616 N3, TRAKTOR 500,
TRAKTOR 540
1973....

8040.02, 8045.02
4 Sil. Dizel 3456cc
44/47/56 Kw (60/64/76
PS) 17:1
40 NC, 50 NC, 50 NCS,
55 NC 329, 55 NL 329,
600, 616 N3, 616 N4, 640,
C 8070
1973....

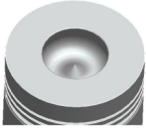
8060.02, 8065.02
6 Sil. Dizel 5187cc 74/88
Kw (100/120 PS) 17:1
110 NC, 110 NR, 80 NC,
80 NR, 80 NT, 90 NC,
90 P, 90 PC, TRAKTOR
1000
1973....



Piston Ölçüleri
(Piston Dimensions)

A : 59.650
B- : 23.700
BØ : 47.100
D : 101.150
E : 19.600

Pim: 32 x 84



Piston Özellikleri
(Piston Features)

Gözarası Düz
(Flat Eye Gap)



Piston Parça No
(Piston Part No)

87-206800-32
87-70768-STDC

87-206806-32
87-70768 040 C

87-206808-32
87-70768 060



Segman Seti
(Ring Set)

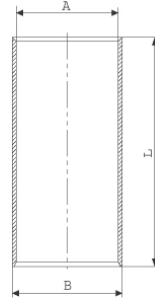
06-206800-40-STD
06-206806-40 0,40 mm
06-206808-40 0,60 mm

2.500 CR KV1
2.500 STD
5.500 CR GOE



Silindir Gömleği
(Liner)

14-010170-00-D
B : 103.000
L : 187.000



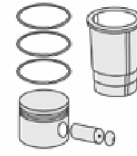
14-010171-00-D
B : 103.500
L : 187.000

Dış çap 0,5 mm farklı
(Outer Diameter 0,5mm
Different)

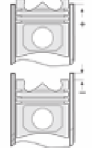
14-010172-00-D
B : 104.000
L : 187.000

Dış çap 1,0 mm farklı
(Outer Diameter 1,0mm
Different)

14-021540-00-D
B : 103.000
L : 187.000
D : 104.000
C : 5.000



Silindir Kit
(Assembly Set)



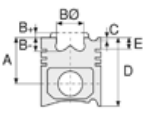
Piston - Blok Montaj
Yüksekliği
(Piston - Block
Assembly Height)

+ 0,46 / + 0,79





Motor Özellikleri
(Engine Specifications)



Piston Ölçüleri
(Piston Dimensions)



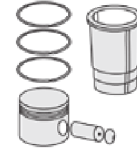
Piston Parça No
(Piston Part No)



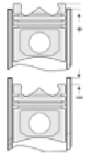
Segman Seti
(Ring Set)



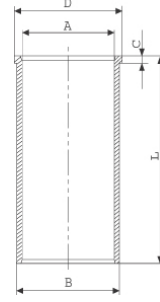
Silindir Gömleği
(Liner)



Silindir Kit
(Assembly Set)



Piston - Blok Montaj
Yüksekliği
(Piston - Block
Assembly Height)



14-021541-00-D

B : 103.500

L : 187.000

D : 104.500

C : 5.000

Dış çap 0,5 mm farklı
(Outer Diameter 0,5mm
Different)

14-021542-00-D

B : 104.000

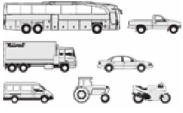
L : 187.000

D : 105.000

C : 5.000

Dış çap 1,0 mm farklı
(Outer Diameter 1,0mm
Different)





Motor Özellikleri
(Engine Specifications)

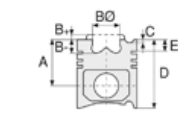
İmalatçı (Manufacturer):
IVECO TRK
Çap (Diameter): 100
FM Grup No: 4106

8025.02
2 Sil. Dizel 1728cc 24 Kw
(32 PS) 17:1
1973....

8030.02, 8035.02
3 Sil. Dizel 2592cc 37/45
Kw (50/62 PS) 17:1
1973....

8040.02, 8045.02
4 Sil. Dizel 3456cc 44/47/
56 Kw (60/64/76 PS) 17:1
1973....

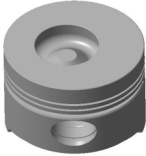
8060.02, 8065.02
6 Sil. Dizel 5187cc 74/88
Kw (100/120 PS) 17:1
616 N 3/4, 625 N 35, 650
N3, 662 N3, AD4 FL4C,
TERRA:4, TRAKTOR 150,
TRAKTOR 350, TRAKTOR
355, TRAKTOR 480,
TRAKTOR 680
1973....



Piston Ölçüleri
(Piston Dimensions)

A : 59.650
B- : 23.500
BØ : 45.400
BX : 5.000
D : 101.150
E : 19.600

Pim: 32 x 84



Piston Özellikleri
(Piston Features)

Gözarası Düz
(Flat Eye Gap)



Piston Parça No
(Piston Part No)

87-206800-22
87-70769-STD

87-206806-22
87-70769 0,40

87-206808-22
87-70769 060



Segman Seti
(Ring Set)

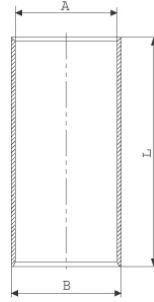
06-206800-40-STD
06-206806-40 0,40 mm
06-206808-40 0,60 mm

2.500 CR KV1
2.500 STD
5.500 CR GOE



Silindir Gömleği
(Liner)

14-010170-00-D
B : 103.000
L : 187.000



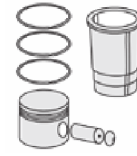
14-010171-00-D
B : 103.500
L : 187.000

Dış çap 0,5 mm farklı
(Outer Diameter 0,5mm
Different)

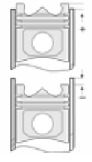
14-010172-00-D
B : 104.000
L : 187.000

Dış çap 1,0 mm farklı
(Outer Diameter 1,0mm
Different)

14-021540-00-D
B : 103.000
L : 187.000
D : 104.000
C : 5.000



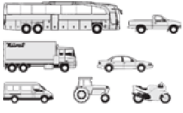
Silindir Kit
(Assembly Set)



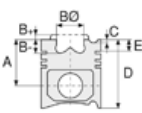
Piston - Blok Montaj
Yüksekliği
(Piston - Block
Assembly Height)

+ 0,46 / + 0,79





Motor Özellikleri
(Engine Specifications)



Piston Ölçüleri
(Piston Dimensions)



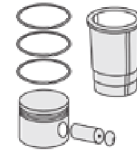
Piston Parça No
(Piston Part No)



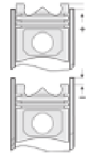
Segman Seti
(Ring Set)



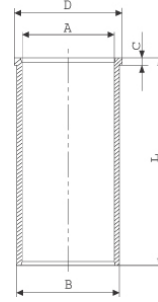
Silindir Gömleği
(Liner)



Silindir Kit
(Assembly Set)



Piston - Blok Montaj
Yüksekliği
(Piston - Block
Assembly Height)



14-021541-00-D

B : 103.500

L : 187.000

D : 104.500

C : 5.000

Dış çap 0,5 mm farklı
(Outer Diameter 0,5mm
Different)

14-021542-00-D

B : 104.000

L : 187.000

D : 105.000

C : 5.000

Dış çap 1,0 mm farklı
(Outer Diameter 1,0mm
Different)

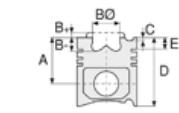




Motor Özellikleri
(Engine Specifications)

İmalatçı (Manufacturer):
IVECO TRK
Çap (Diameter): 100
FM Grup No: 4107

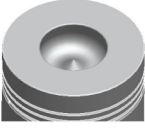
8040.02.000
008201/477 5035
4 Sil. Dizel 3456cc 17:1
OTOYOL KAMYON 50
NC, TUMOSAN-TÜRK
TRAKTOR
1973....



Piston Ölçüleri
(Piston Dimensions)

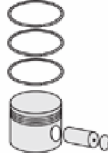
A : 59.650
B- : 23.700
BØ : 47.100
D : 101.150
E : 19.600

Pim: 34 x 84



Piston Özellikleri
(Piston Features)

Gözarası Düz
(Flat Eye Gap)



Piston Parça No
(Piston Part No)

87-836300-12
87-70770-STDC

87-836306-12
87-70770 040C

87-836308-12
87-70770 060C



Segman Seti
(Ring Set)

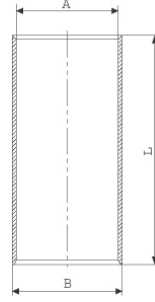
06-836300-30-STD
06-836306-30 0,40 mm
06-836308-30 0,60 mm

2.500 CRP KV1
2.500 P IKA
4.000 CR GOE



Silindir Gömleği
(Liner)

14-010780-00-D
B : 103.000
L : 196.000

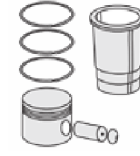


14-020090-00-D
B : 103.000
L : 196.000
D : 104.000
C : 5.000

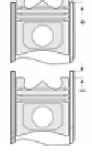


14-020091-00-D
B : 103.500
L : 196.000
D : 104.500
C : 5.500

Dış çap 0,50 mm farklı
(Outer Diameter
0,50mm Different)



Silindir Kit
(Assembly Set)



Piston - Blok Montaj
Yüksekliği
(Piston - Block
Assembly Height)

+ 0,365 / + 0,761





Motor Özellikleri
(Engine Specifications)

Piston Ölçüleri
(Piston Dimensions)

Piston Parça No
(Piston Part No)

Segman Seti
(Ring Set)

Silindir Gömleği
(Liner)

Silindir Kit
(Assembly Set)

Piston - Blok Montaj
Yüksekliği
(Piston - Block
Assembly Height)

İmalatçı (Manufacturer):
IVECO TRK
Çap (Diameter): 100
FM Grup No: 4108

A : 65.100
B- : 22.700
BØ : 49.100
D : 108.500
E : 17.600

87-836300-32
87-70771-STDC

87-836306-32
87-70771 040C

06-836300-30-STD
06-836306-30 0,40 mm
06-836308-30 0,60 mm

14-010780-00-D
B : 103.000
L : 196.000

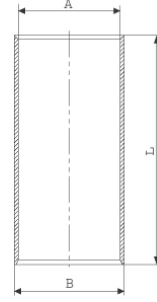
+ 0,365 / + 0,761

8035.06
3 Sil. Dizel 2710cc 41 Kw
(56 PS)
TRAKTOR 54 C,
TRAKTOR 55-56
1985 - 1988

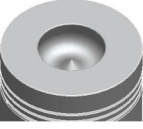
Pim: 38 x 85

87-836308-32
87-70771 060C

2.500 CRP KV1
2.500 P IKA
4.000 CRP STD



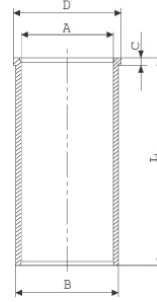
8040.02, 8045.06
4 Sil. Dizel 3613cc 52 Kw
(70PS)
TRAKTOR 70-56,
TRAKTOR 70-56 DT,
TRAKTOR 70-66
1985....



Piston Özellikleri
(Piston Features)

Gözarası Düz
(Flat Eye Gap)

14-020090-00-D
B : 103.000
L : 196.000
D : 104.000
C : 5.000



14-020091-00-D
B : 103.500
L : 196.000
D : 104.500
C : 5.500

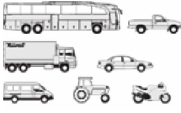
Dış çap 0,50 mm farklı
(Outer Diameter
0,50mm Different)





IVECO TRK - Ø 103

87-70773-STD



Motor Özellikleri
(Engine Specifications)

İmalatçı (Manufacturer):
IVECO TRK
Çap (Diameter): 103
FM Grup No: 4109

8035.04
3 Sil. Dizel 2748cc 40/43
Kw (55/58 PS) 17:1
505 CS, 565 C, 566 DT,
570 V/F/DTF/DT, 580 DT,
588 R 8056, C 8066
1980 - 1983

8031.06
3 Sil. Dizel 2749cc 37/38
Kw (50/52 PS) 17:1
RADIADER BENTRA 215,
RAUPE FL4L

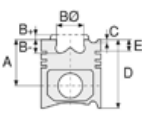
8040.04.200
4 Sil. Dizel 3666cc 63 Kw
(85 PS) 17:1
TRAKTOR 50-55
1978 - 1986

**8041.04 ,8045.04.
300**
4 Sil. Dizel 3666cc 63 Kw
(85 PS) 17:1
765 C, 766 DT, 780 DT,
788 R 8076 FL5, 855 C
1975 - 1984

8055.04.200
5 Sil. Dizel 5380cc 63/66
Kw (86/90 PS) 17:1
880-5 DT/S, 955 C Fr7
1980 - 1984

8065.04.200
6 Sil. Dizel 5496cc 60/85
Kw (82/115 PS) 17:1
1000 S/DT, 1180 DT, Fl7
1976 - 1979

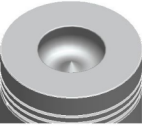
8060.04.060
6 Sil. Dizel 5499cc 96/
123,5 Kw (130/168 PS) 17:1



Piston Ölçüleri
(Piston Dimensions)

A : 59.650
B- : 22.700
BØ : 50.000
D : 101.150
E : 19.600

Pim: 34 x 89,8



Piston Özellikleri
(Piston Features)

Gözarası Düz
(Flat Eye Gap)



Piston Parça No
(Piston Part No)

87-034160-02
87-70773-STD
87-034108-02
87-70773 060



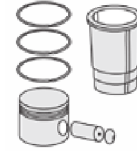
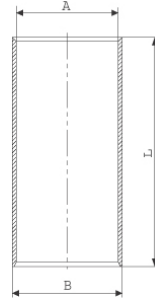
Segman Seti
(Ring Set)

06-034160-10-STD
06-034168-10 0,60 mm
2.500 CRP KV1
2.500 P IKA
4.000 CRP STD

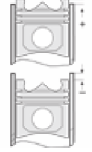


Silindir Gömleği
(Liner)

14-010180-00-D
B : 107.000
L : 187.000



Silindir Kit
(Assembly Set)



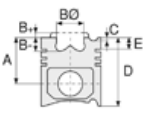
Piston - Blok Montaj
Yüksekliği
(Piston - Block
Assembly Height)

+ 0,465 / + 0,785

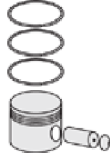


Motor Özellikleri
(Engine Specifications)

100, 110, 315, 65, 79, 80,
90, 95, IVECO 115, IVECO
135
1978 - 1986



Piston Ölçüleri
(Piston Dimensions)



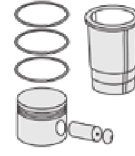
Piston Parça No
(Piston Part No)



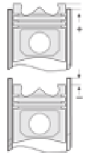
Segman Seti
(Ring Set)



Silindir Gömleği
(Liner)



Silindir Kit
(Assembly Set)



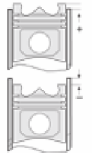
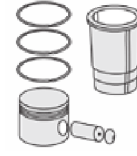
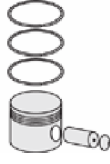
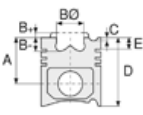
Piston - Blok Montaj
Yüksekliği
(Piston - Block
Assembly Height)





IVECO TRK - Ø 104

87-70615-STD



Motor Özellikleri
(Engine Specifications)

İmalatçı (Manufacturer):
IVECO TRK
Çap (Diameter): 104
FM Grup No: 4057

TIER1

3 Sil. Dizel 2900cc 60 PS
YEŞİL MOTOR (Green
Engine),
TURBOSUZ (Without
Turbo)
TT60 TRK

TIER1

4 Sil. Dizel 3900cc 75 Ps
YEŞİL MOTOR (Green
Engine),
TURBOSUZ (Without
Turbo)
TD75 TRK

TIER1

4 Sil. Dizel 3900cc 85 PS
YEŞİL MOTOR (Green
Engine),
TURBOSUZ (Without
Turbo)
TD85 TRK

Piston Ölçüleri
(Piston Dimensions)

A : 65.330
B- : 21.400
BØ : 49.000
BX : 3.500
BY : 3.000
D : 104.330
E : 14.830

Pim: 38 x 85



Piston Özellikleri
(Piston Features)

Gözarası Konik
(Conical Eye Gap)

Piston Parça No
(Piston Part No)

87-836400-02
87-70615-STD

Segman Seti
(Ring Set)

06-836400-00-STD

2.500 CRP KV1
2.500 P F14
4.000 CRP STD

Silindir Gömleği
(Liner)

Silindir Kit
(Assembly Set)

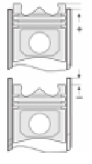
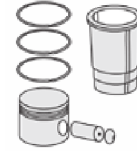
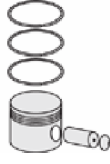
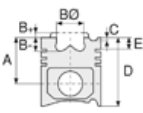
Piston - Blok Montaj
Yüksekliği
(Piston - Block
Assembly Height)





IVECO TRK - Ø 104

87-70616-STD



Motor Özellikleri
(Engine Specifications)

İmalatçı (Manufacturer):
IVECO TRK
Çap (Diameter): 104
FM Grup No: 4132

8045.05B.241
4 Sil. Dizel 52KW-(71PS)
ARAZÖR (Spacer), BİCER
(Combine Harvester)

Piston Ölçüleri
(Piston Dimensions)

A : 65.330
B- : 21.400
BØ : 49.000
BX : 3.500
BY : 3.000
D : 104.330
E : 14.830

Pim: 38 x 85



Piston Özellikleri
(Piston Features)

Gözarası Konik
(Conical Eye Gap)

Piston Parça No
(Piston Part No)

87-107700-02
87-70616-STD

Segman Seti
(Ring Set)

06-107700-00-STD

2.500 CRP KV1
2.500 P IKA
4.000 CR STD

Silindir Gömleği
(Liner)

Silindir Kit
(Assembly Set)

Piston - Blok Montaj
Yüksekliği
(Piston - Block
Assembly Height)





IVECO TRK - Ø 104

87-70791-STD

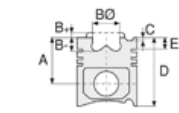


Motor Özellikleri
(Engine Specifications)

İmalatçı (Manufacturer):
IVECO TRK
Çap (Diameter): Ø 104
FM Grup No: 4130

8035.05
3 Sil. Dizel 2900cc
37-48 Kw(50-65 Bg) 18:1
TN55, TN65, TN70,
TN75, TN80, TN90,
TN95, TT50, TT55,
TT65, TT75
2004...

8045.05/25
4 Sil. Dizel 3900cc
66-74 Kw(90-100 Ps)
TD95, TL100,
TL70, TL80, TL90
2004...



Piston Ölçüleri
(Piston Dimensions)

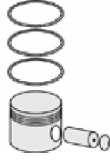
A : 65.330
B- : 21.400
BØ : 48.200
BX : 3.500
BY : 3.000
D : 104.330
E : 6.680

Pim: 38 x 85



Piston Özellikleri
(Piston Features)

Segman Taşıyıcı
(Ring Carrier)
Yağ Püskürtme Oyuğu
(Oil Jet Cut-out)
Gözarası Konik
(Conical Eye Gap)



Piston Parça No
(Piston Part No)

87-837600-22
87-70791-STD



Segman Seti
(Ring Set)

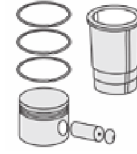
06-837600-90-STD

3.000  CKP KV1
2.500  P IKA
4.000  CRP STD

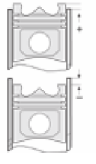
Goetze® LKZ-Ring®



Silindir Gömleği
(Liner)



Silindir Kit
(Assembly Set)



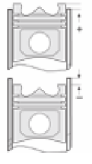
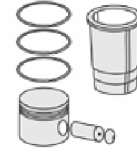
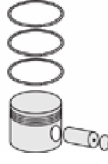
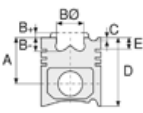
Piston - Blok Montaj
Yüksekliği
(Piston - Block
Assembly Height)





IVECO TRK - Ø 104

87-72095-STD



Motor Özellikleri
(Engine Specifications)

İmalatçı (Manufacturer):
IVECO TRK
Çap (Diameter): 104
FM Grup No: 4135

Stage IIIA (Tier 3)
4 Sil. Dizel 75-85-95 HP
TÜMOSAN (8085),
TÜMOSAN (8095),
TÜMOSAN (8075)
2013 - 2016

Piston Ölçüleri
(Piston Dimensions)

A : 65.400
B- : 23.250
BØ : 45.500
BX : 6.000
BY : 3.000
D : 104.400
E : 6.700

Pim: 38 x 85



Piston Özellikleri
(Piston Features)

Segman Taşıyıcı
(Ring Carrier)
Yağ Püskürtme Oyuğu
(Oil Jet Cut-out)
Gözarası Konik
(Conical Eye Gap)

Piston Parça No
(Piston Part No)

87-837600-62
87-72095-STD

Segman Seti
(Ring Set)

06-837600-90-STD

3.000 CKP KV1
2.500 P IKA
4.000 CRP STD

Goetze® LKZ-Ring®

Silindir Gömleği
(Liner)

Silindir Kit
(Assembly Set)

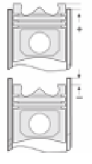
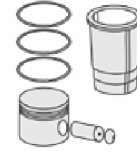
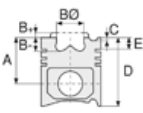
Piston - Blok Montaj
Yüksekliği
(Piston - Block
Assembly Height)





IVECO TRK - Ø 104

87-72856-STD



Motor Özellikleri
(Engine Specifications)

İmalatçı (Manufacturer):
IVECO TRK
Çap (Diameter): 104
FM Grup No: 4134

8045.25D.313T
4 Sil. Dizel 3908cc
76KW-110 HP
TD5.110

Piston Ölçüleri
(Piston Dimensions)

A : 65.330
B- : 18.200
BØ : 58.000
BX : 2.500
BY : 3.000
C1 : 1.500
D : 104.330
E : 6.680

Pim: 38 x 85



Piston Özellikleri
(Piston Features)

Segman Taşıyıcı
(Ring Carrier)
Yağ Püskürtme Oyuğu
(Oil Jet Cut-out)
Gözarası Konik
(Conical Eye Gap)

Piston Parça No
(Piston Part No)

87-837600-42
87-72856-STD

Segman Seti
(Ring Set)

06-837600-90-STD

3.000 CKP KV1
2.500 P IKA
4.000 CRP STD

Goetze® LKZ-Ring®

Silindir Gömleği
(Liner)

Silindir Kit
(Assembly Set)

Piston - Blok Montaj
Yüksekliği
(Piston - Block
Assembly Height)

+0,20 / +0,30

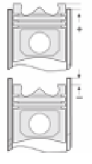
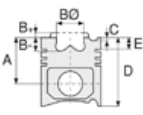
+0,30 / +0,45





IVECO TRK - Ø 104

87-72871-STD



Motor Özellikleri
(Engine Specifications)

İmalatçı (Manufacturer):
IVECO TRK
Çap (Diameter): 104
FM Grup No: 4133

F4HE9684JX100
EURO 3

6 Sil. Dizel 136kw-184PS
TC 56 SERISI

Piston Ölçüleri
(Piston Dimensions)

A : 62.500
B- : 20.900
BØ : 59.600
D : 96.500
E : 10.100

Pim: 38 x 82



Piston Özellikleri
(Piston Features)

Segman Taşıyıcı
(Ring Carrier)
Soğutma Kanallı
(Coolin Gallery)
Yağ Püskürtme Oyuğu
(Oil Jet Cut-out)
Gözarası Konik
(Conical Eye Gap)

Piston Parça No
(Piston Part No)

87-844700-02
87-72871-STD

Segman Seti
(Ring Set)

06-844700-00-STD

3.000 CKS KV1
2.385 P GOE
4.000 CKS GOE

Silindir Gömleği
(Liner)

Silindir Kit
(Assembly Set)

Piston - Blok Montaj
Yüksekliği
(Piston - Block
Assembly Height)





IVECO TRK - Ø 104

87-72872-STD

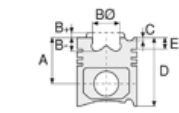


Motor Özellikleri
(Engine Specifications)

İmalatçı (Manufacturer):
IVECO TRK
Çap (Diameter): 104
FM Grup No: 4082

**F4GEO484C -
F4GEO454A**

4 Sil. Dizel 4485cc 74-94
KW / 101-128 PS
BICER DOVER (Combine
Reaper), IS
MAKINASI (Heavy
Machinery),
TRAKTOR (Tractor)
2006...



Piston Ölçüleri
(Piston Dimensions)

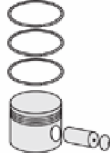
A : 62.400
B- : 24.100
BØ : 52.300
BX : 6.000
D : 95.900
E : 7.000

Pim: 38 x 81,9



Piston Özellikleri
(Piston Features)

Segman Taşıyıcı
(Ring Carrier)
Yağ Püskürtme Oyuğu
(Oil Jet Cut-out)
Gözarası Konik
(Conical Eye Gap)



Piston Parça No
(Piston Part No)

87-844700-22
87-72872-STD



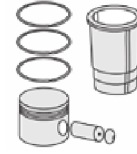
Segman Seti
(Ring Set)

06-844700-00-STD

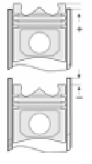
3.000  CKS KV1
2.385  P GOE
4.000  CKS GOE



Silindir Gömleği
(Liner)



Silindir Kit
(Assembly Set)



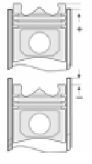
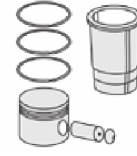
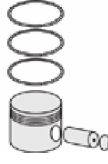
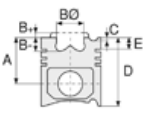
Piston - Blok Montaj
Yüksekliği
(Piston - Block
Assembly Height)





IVECO TRK - Ø 106,5

87-72090-STD



Motor Özellikleri
(Engine Specifications)

İmalatçı (Manufacturer):
IVECO TRK
Çap (Diameter): 106,5
FM Grup No: 4136

Stage IIIA (Tier 3)
4 Sil. Dizel 105 BG-115 BG
TÜMOSAN (9115),
TÜMOSAN (8105)

Piston Ölçüleri
(Piston Dimensions)

A : 65.400
B- : 23.200
BØ : 45.500
BX : 6.000
BY : 3.000
D : 104.400
E : 14.400

Pim: 38 x 85



Piston Özellikleri
(Piston Features)

Segman Taşıyıcı
(Ring Carrier)
Yağ Püskürtme Oyuğu
(Oil Jet Cut-out)
Gözarası Konik
(Conical Eye Gap)

Piston Parça No
(Piston Part No)

87-894600-02
87-72090-STD

Segman Seti
(Ring Set)

06-894600-00-STD

3.100  CR KV1
2.385  P STD
3.500  CR STD

Silindir Gömleği
(Liner)

Silindir Kit
(Assembly Set)

Piston - Blok Montaj
Yüksekliği
(Piston - Block
Assembly Height)

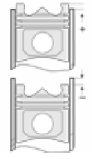
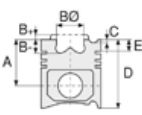
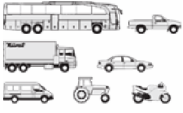
+0,75+0,85





IVECO TRK - Ø 111,76

87-70612-STD



Motor Özellikleri
(Engine Specifications)

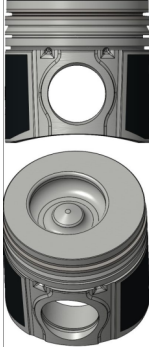
İmalatçı (Manufacturer):
IVECO TRK
Çap (Diameter): Ø 111,76
FM Grup No: 4138

675 TA/AA-AB-AG-
AH-AJ-CA-CB-CC-CF
4 Sil. Dizel
152 KW-207 HP
TC 56 Bicerdöver,
CX740/CX840/CS540/
CS640/TC56

Piston Ölçüleri
(Piston Dimensions)

A : 73.000
B - : 21.000
B : 58.900
BX : 5.050
BY : 1.700
D : 111.000
E : 9.600

Pim: 44,5 x 91,75



Piston Özellikleri
(Piston Features)

Segman Taşıyıcı
(Ring Carrier)
Soğutma Kanallı
(Coolin Gallery)
Yağ Püskürtme Oyuğu
(Oil Jet Cut-out)
Gözarası Konik
(Conical Eye Gap)

Piston Parça No
(Piston Part No)

87-882700-02
87-70612-STD

Segman Seti
(Ring Set)

06-882700-00 STD
3.160 CR KV1
2.390 P KV1
3.000 CR ST

Silindir Gömleği
(Liner)

Silindir Kit
(Assembly Set)

Piston - Blok Montaj
Yüksekliği
(Piston - Block
Assembly Height)

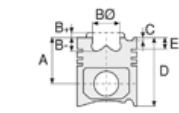




Motor Özellikleri
(Engine Specifications)

İmalatçı (Manufacturer):
IVECO TRK
Çap (Diameter): 115
FM Grup No: 4118

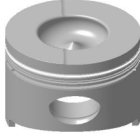
8365.25
6 Sil. Dizel 8100cc
FIAT ALLIS, FL 14E
1980...



Piston Ölçüleri
(Piston Dimensions)

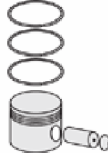
A : 76.500
B- : 27.900
BØ : 58.500
D : 140.500
E : 18.650

Pim: 42 x 97



Piston Özellikleri
(Piston Features)

Segman Taşıyıcı
(Ring Carrier)
Gözarası Düz
(Flat Eye Gap)



Piston Parça No
(Piston Part No)

87-245500-22
87-71706-STD



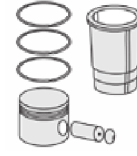
Segman Seti
(Ring Set)

06-245500-00-STD

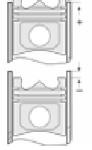
3.000 CRP IKA
2.500 P STD
4.000 CRP STD



Silindir Gömleği
(Liner)



Silindir Kit
(Assembly Set)



Piston - Blok Montaj
Yüksekliği
(Piston - Block
Assembly Height)

- 0,298 / + 0,614

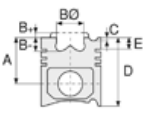




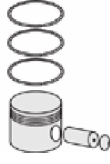
Motor Özellikleri
(Engine Specifications)

İmalatçı (Manufacturer):
IVECO TRK
Çap (Diameter): 120
FM Grup No: 4119

6 Sil. Dizel
643 N, 643 N1, 643 T



Piston Ölçüleri
(Piston Dimensions)



Piston Parça No
(Piston Part No)



Segman Seti
(Ring Set)

06-835200-20-STD

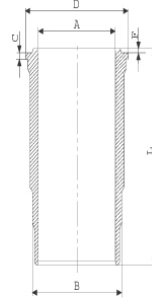
3.500 CR IKA
3.000 P STD
3.000 P STD
5.500 CRP STD



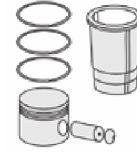
Silindir Gömleği
(Liner)

14-450020-00-WH

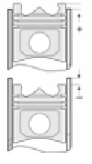
B : 134.000
L : 249.250
D : 144.800
C : 10.100
F : 1.000



Dış Yüzeyi Fosfat Kaplı
(Outer Surface
Phosphate Coated)



Silindir Kit
(Assembly Set)



Piston - Blok Montaj
Yüksekliği
(Piston - Block
Assembly Height)

