

Motor Özellikleri
(Engine Specifications)

İmalatçı (Manufacturer):
Jaguar-Peugeot-
Land Rover
Çap (Diameter): 81
FM Grup No: 4909

2.7 Lion TVM

Dizel 2720cc 150 KW
(204 PS)
S Type 2.7D Twin Turbo

2.7 Lion TVM

Dizel 2720cc 150 Kw
(204 PS)
607 HDI
2008....

2.7 Lion TVM

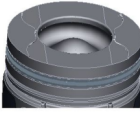
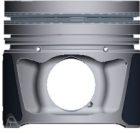
Dizel 2720cc 150 Kw
(204 PS)
DISCOVERY 2.7 TDI,
RANGE ROVER 2.7 TDV6
2008....

Jaguar, Peugeot ve
Land Rover ile ortak motor
(Common Engine With
Jaguar, Peugeot And
Land Rover)

Piston Ölçüleri
(Piston Dimensions)

A : 47.000
B- : 14.050
BØ : 44.000
C1 : 0.500
D : 71.000
E : 9.000

Pim: 29 x 62



Piston Özellikleri
(Piston Features)

Segman Taşıyıcı
(Ring Carrier)
Soğutma Kanallı
(Coolin Gallery)
Yağ Püskürtme Oyuğu
(Oil Jet Cut-out)
Gözarası Konik
(Conical Eye Gap)

Piston Parça No
(Piston Part No)

87-839100-02
87-72700-STD

87-839107-02
87-72700 0,50

Segman Seti
(Ring Set)

06-839100-00-STD
06-839107-00 0,50 mm

2.000 CK KV1
2.000 P GOE
2.000 P F14

Yağ Segmanı Matkap Delik
(Oil Ring Drill Perforated)

Silindir Gömleği
(Liner)

Silindir Kit
(Assembly Set)

Piston - Blok Montaj
Yüksekliği
(Piston - Block
Assembly Height)

1,12 mm conta ile (With
Notch) 0,54 /0,55

1,17 mm conta ile (With
Notch) 0,55/0,60

1,22 mm conta ile (With
Notch) 0,60/ 0,65

1,27 mm conta ile (With
Notch) 0,65/0,70

1,32 mm conta ile (With
Notch) 0,70/0,75





JAGUAR - FORD PKW - Ø 86,01

87-72709-STD



Motor Özellikleri
(Engine Specifications)

İmalatçı (Manufacturer):
Jaguar-Ford PKW
Çap (Diameter): 86,01
FM Grup No: 3038

FMBA

4 Sil. Dizel 1998cc 96 KW-
131 PS 18,2:1
X-Type 2.0d 16V
2003....

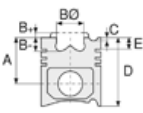
V185 DURATORQ
TDCI

4 Sil. Dizel 1998cc 125 Ps
Turbo, Intercooler,
Common Rail
TRANSİT 2.0 TDCI
2000....

CD132 DURATORQ
TDCI

4 Sil. Dizel 1998cc 115/130
Ps
Turbo, Intercooler,
Common Rail
MONDEO 2.0 TDCI
2001....

Jaguar ve Ford PKW ile
ortak motor (Common
Engine With Jaguar And
Ford PKW)



Piston Ölçüleri
(Piston Dimensions)

A : 47.700
B- : 15.200
B0 : 43.300
D : 74.100
E : 8.620

Pim: 30 x 66,85



Piston Özellikleri
(Piston Features)

Segman Taşıyıcı
(Ring Carrier)
Soğutma Kanallı
(Coolin Gallery)
Gözarası Konik
(Conical Eye Gap)



Piston Parça No
(Piston Part No)

87-839500-92
87-72709-STD
87-839505-92
87-72709 0,25

87-839507-92
87-72709 0,50



Segman Seti
(Ring Set)

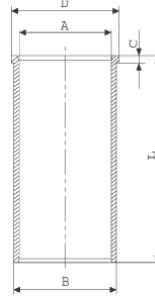
06-839500-00-STD
06-839505-00 0,25 mm
06-839507-00 0,50 mm
06-839511-00 1,00 mm

2.000 CKP KVI
2.000 P GOE
2.000 NT ST



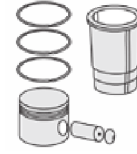
Silindir Gömleği
(Liner)

14-020930-00-D
B : 89.000
L : 167.000
D : 90.500
C : 5.000

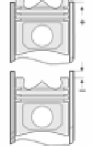


14-020931-00-D
B : 89.500
L : 167.000
D : 91.000
C : 5.500

Dış çap 0,50 mm farklı
(Outer Diameter
0,50mm Different)



Silindir Kit
(Assembly Set)



Piston - Blok Montaj
Yüksekliği
(Piston - Block
Assembly Height)

1,10 mm conta ile (With
Notch) +0,43 /+0,52

1,15 mm conta ile (With
Notch) +0,52/+0,57

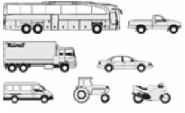
1,20 mm conta ile (With
Notch) +0,57/+0,62





JAGUAR - FORD PKW - Ø 86,01

87-72705-STD



Motor Özellikleri
(Engine Specifications)

İmalatçı (Manufacturer):
Jaguar-Ford PKW
Çap (Diameter): 86,01
FM Grup No: 2969

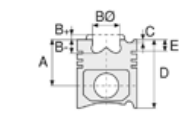
LJ46D-QJBA

4 Sil. Dizel 2198cc 146 KW
-155 PS
X-Type 2.2d
2005 - 2009

**Cd132 DURATORQ
TDCI**

4 Sil. Dizel 2200cc 150 PS
MONDEO 2.2 TDCI,
TRANSIT 2.2 TDCI

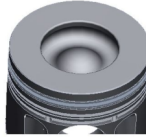
C.Rail/Jaguar ve Ford
PKW ile ortak motor
(Common Engine With
C.Rail/Jaguar And Ford
PKW)



Piston Ölçüleri
(Piston Dimensions)

A : 43.420
B- : 15.850
B0 : 46.900
D : 69.820
E : 8.610

Pim: 30 x 66,85



Piston Özellikleri
(Piston Features)

Segman Taşıyıcı
(Ring Carrier)
Soğutma Kanallı
(Coolin Gallery)
Gözarası Konik
(Conical Eye Gap)



Piston Parça No
(Piston Part No)

87-839500-62
87-72705-STD
87-839505-62
87-72705 0,25

87-839507-62
87-72705 050



Segman Seti
(Ring Set)

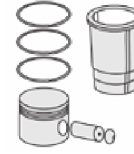
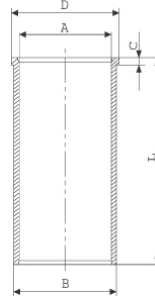
06-839500-00-STD
06-839505-00 0,25 mm
06-839507-00 0,50 mm
06-839511-00 1,00 mm

2.000 CKP KV1
2.000 P GOE
2.000 NT ST

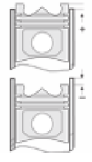


Silindir Gömleği
(Liner)

14-021120-00-D
B : 89.000
L : 156.000
D : 90.500
C : 5.000



Silindir Kit
(Assembly Set)



**Piston - Blok Montaj
Yüksekliği**
(Piston - Block
Assembly Height)

1,10 mm conta ile (With
Notch) +0,43 /+0,52

1,15 mm conta ile (With
Notch) +0,52/+0,57

1,20 mm conta ile (With
Notch) +0,57/+0,62

