



JENBACHER - Ø 135

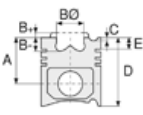
06-851600-00-STD



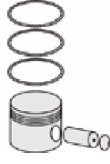
Motor Özellikleri
(Engine Specifications)

İmalatçı (Manufacturer):
Jenbacher
Çap (Diameter): 135
FM Grup No: 9804

TYPE 3 ENGINE
20 Sil. CNG 1067 KWE
J320 GS



Piston Ölçüleri
(Piston Dimensions)



Piston Parça No
(Piston Part No)



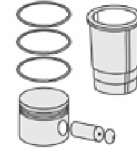
Segman Seti
(Ring Set)

06-851600-00-STD

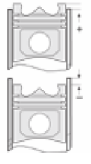
4.000  CKS KV4
3.000  CKS GOE
5.000  CR GOE



Silindir Gömleği
(Liner)



Silindir Kit
(Assembly Set)



Piston - Blok Montaj
Yüksekliği
(Piston - Block
Assembly Height)





JENBACHER - Ø 145

87-71270-STD

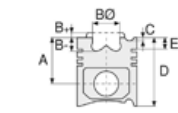


Motor Özellikleri
(Engine Specifications)

İmalatçı (Manufacturer):
Jenbacher
Çap (Diameter): 145
FM Grup No: 9803

TYPE 4 ENGINE

20 Sil. CNG 844 - 1.487
KW
J420 GS



Piston Ölçüleri
(Piston Dimensions)

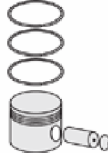
A : 109.500
B- : 47.700
D : 161.500
E : 16.000

Pim: 60 x 116



Piston Özellikleri
(Piston Features)

Segman Taşıyıcı
(Ring Carrier)
Soğutma Kanallı
(Coolin Gallery)
Gözarası Konik
(Conical Eye Gap)



Piston Parça No
(Piston Part No)

87-846200-02
87-71270-STD



Segman Seti
(Ring Set)

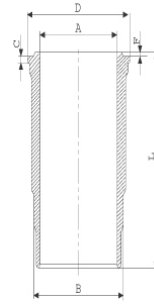
06-846200-20-STD

4.000 CKS KV4
3.000 CR GOE
5.000 CR GOE

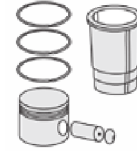


Silindir Gömleği
(Liner)

14-480890-00-WH
B : 164.000
L : 328.000
D : 186.000
C : 14.760
R : 13.600

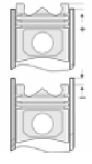


Euro 6 Malzemeli (With
Euro 6 Material)/
Kurum Giderme Ringli
(With Scraper Rings)
24-35054-10/0
3 X(152,00 x3,50) FKM
80



Silindir Kit
(Assembly Set)

89-846200-02-STD
89-71270-STD



Piston - Blok Montaj
Yüksekliği
(Piston - Block
Assembly Height)

