



JOHN DEERE - Ø 86

87-73155-STD



Motor Özellikleri
(Engine Specifications)

İmalatçı (Manufacturer):
John Deere
Çap (Diameter): 86
FM Grup No: 4245

5030T 3,0L
5 Sil. Dizel 75-99 HP
JENERATOR
2010....



Piston Ölçüleri
(Piston Dimensions)

A : 53.500
B- : 18.500
BØ : 46.750
BX : 2.000
BY : 3.300
D : 81.000
E : 6.400

Pim: 30 x 68



Piston Özellikleri
(Piston Features)

Segman Taşıyıcı
(Ring Carrier)
Gözarası Konik
(Conical Eye Gap)



Piston Parça No
(Piston Part No)

87-857300-22
87-73155-STD



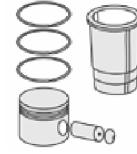
Segman Seti
(Ring Set)

06-857300-00-STD

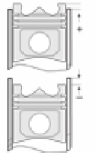
2.000 CKS ST
2.500 P GOE
3.000 NT ST



Silindir Gömleği
(Liner)



Silindir Kit
(Assembly Set)



Piston - Blok Montaj
Yüksekliği
(Piston - Block
Assembly Height)

+0,40





JOHN DEERE - Ø 86

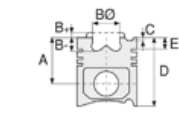
87-73156-STD



Motor Özellikleri
(Engine Specifications)

İmalatçı (Manufacturer):
John Deere
Çap (Diameter): 86
FM Grup No: 4246

4024 T (2.4L)
4 Sil. Dizel 44-66 HP
JENERATOR
2010....



Piston Ölçüleri
(Piston Dimensions)

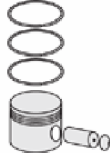
A : 53.500
B- : 18.500
BØ : 46.750
BX : 0.900
BY : 1.000
D : 81.000
E : 6.200

Pim: 30 x 68



Piston Özellikleri
(Piston Features)

Segman Taşıyıcı
(Ring Carrier)
Gözarası Konik
(Conical Eye Gap)



Piston Parça No
(Piston Part No)

87-857300-02
87-73156-STD



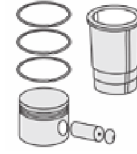
Segman Seti
(Ring Set)

06-857300-00-STD

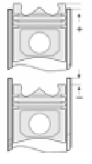
2.000  CKS ST
2.500  P GOE
3.000  NT ST



Silindir Gömleği
(Liner)



Silindir Kit
(Assembly Set)



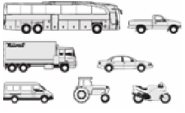
Piston - Blok Montaj
Yüksekliği
(Piston - Block
Assembly Height)





JOHN DEERE - Ø 98

87-73180-STD



Motor Özellikleri
(Engine Specifications)

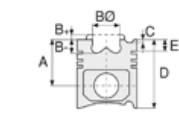
İmalatçı (Manufacturer):
John Deere
Çap (Diameter): 98
FM Grup No: 4236

3152, 3152D

3 Sil. Dizel
1020 TRK, 1030 TRK,
2020, 2510, 300, 300A,
350A, 350B, 380, 820
TRK
1972 - 1975

4202

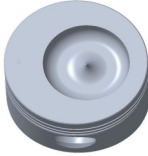
4 Sil. Dizel
400



Piston Ölçüleri
(Piston Dimensions)

A : 57.500
B- : 16.500
BØ : 59.000
BX : 7.000
D : 99.300
E : 14.650

Pim: 30,162 x 81,4



Piston Özellikleri
(Piston Features)

Gözarası Düz
(Flat Eye Gap)



Piston Parça No
(Piston Part No)

87-856300-02
87-73180-STD



Segman Seti
(Ring Set)

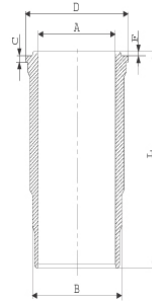
06-856300-90-STD

2.350 CKP GOE
2.380 P GOE
5.000 CRP STD

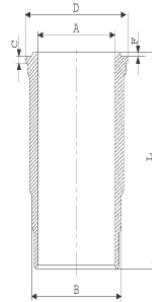


Silindir Gömleği
(Liner)

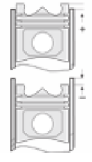
14-451150-00-WH
B : 107.600
L : 196.000
D : 123.000
C : 6.050
F : 0.750



14-480600-00-WH
B : 107.600
L : 196.750
D : 123.000
C : 6.050
F : 0.750

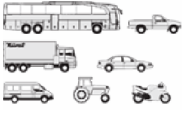


Silindir Kit
(Assembly Set)



Piston - Blok Montaj
Yüksekliği
(Piston - Block
Assembly Height)





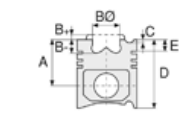
Motor Özellikleri
(Engine Specifications)

İmalatçı (Manufacturer):
John Deere
Çap (Diameter): 102
FM Grup No: 4201

3164 DL O1
3 Sil. Dizel 2690cc 42 Kw
(57 PS)
1520 TRAKTOR
1967....

4219 DL O1
4 Sil. Dizel 3588cc 54 Kw
(72 PS)
2120 TRAKTOR
1968 - 1973

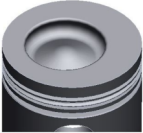
6329 DL O1
6 Sil. Dizel 5395cc 67 Kw
(90 PS)
3120 TRAKTOR (Tractor),
630 BICERDOVER
(Combine Harvester)
1968 - 1973



Piston Ölçüleri
(Piston Dimensions)

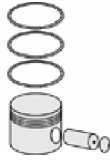
A : 57.300
B- : 16.500
BØ : 58.500
BX : 5.000
D : 103.100
E : 12.000

Pim: 30,162 x 84,8



Piston Özellikleri
(Piston Features)

Gözarası Düz
(Flat Eye Gap)



Piston Parça No
(Piston Part No)

87-181800-12
87-71422-STDB



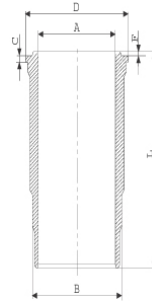
Segman Seti
(Ring Set)

06-181800-90-STD
3.170 CKP KV1
2.385 P STD
5.000 CRP STD

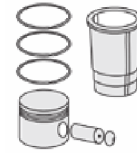
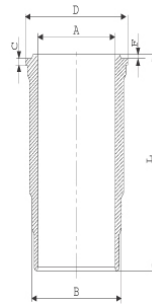


Silindir Gömleği
(Liner)

14-452740-00-WH
B : 111.000
L : 197.000
D : 125.000
C : 6.045
F : 0.815

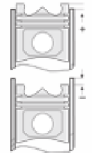


14-480480-00-WH
B : 111.000
L : 196.000
D : 125.000
C : 6.050
F : 0.750



Silindir Kit
(Assembly Set)

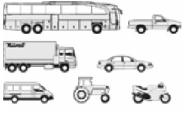
88-181800-12-STD
88-71422-STDB



Piston - Blok Montaj
Yüksekliği
(Piston - Block
Assembly Height)

- 0,07 / 0



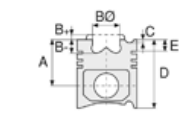


Motor Özellikleri
(Engine Specifications)

İmalatçı (Manufacturer):
John Deere
Çap (Diameter): 102
FM Grup No: 4202

3164 DL O3

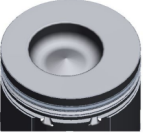
3 Sil. Dizel 2696cc 26/37
Kw (35/51 PS)
1020, 1030, 1035, 1120,
1130, 1530, 2020, 2040,
830, 890 BICERDOVER
(Combine Harvester),
925, 930
1967....



Piston Ölçüleri
(Piston Dimensions)

A : 66.300
B- : 21.200
BØ : 53.900
BX : 3.500
D : 110.800
E : 13.100

Pim: 34,938 x 84



Piston Özellikleri
(Piston Features)

Segman Taşıyıcı
(Ring Carrier)
Gözarası Düz
(Flat Eye Gap)



Piston Parça No
(Piston Part No)

87-181800-32
87-71423-STDA



Segman Seti
(Ring Set)

06-181800-90-STD

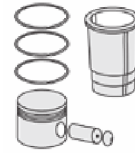
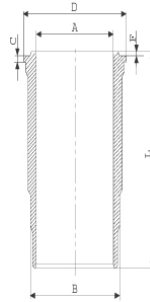
3.170  CKP KV1
2.385  P STD
5.000  CRP STD



Silindir Gömleği
(Liner)

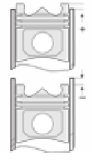
14-452740-00-WH

B : 111.000
L : 197.000
D : 125.000
C : 6.045
F : 0.815



Silindir Kit
(Assembly Set)

88-181800-32-STD
88-71423-STDA



Piston - Blok Montaj
Yüksekliği
(Piston - Block
Assembly Height)

- 0,07 / 0





JOHN DEERE - Ø 106,5

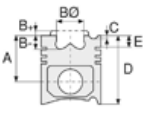
14-451410-00-WH



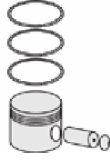
Motor Özellikleri
(Engine Specifications)

İmalatçı (Manufacturer):
John Deere
Çap (Diameter): 106,5
FM Grup No: 4247

4276D
4 Sil. Dizel 53 KW-71 HP



Piston Ölçüleri
(Piston Dimensions)



Piston Parça No
(Piston Part No)

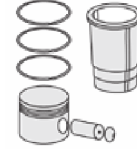
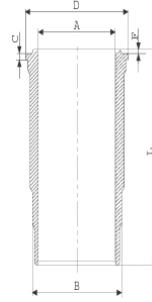


Segman Seti
(Ring Set)

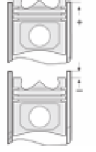


Silindir Gömleği
(Liner)

14-451410-00-WH
B : 115.740
L : 218.820
D : 126.000
C : 6.070
F : 0.889



Silindir Kit
(Assembly Set)



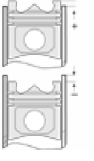
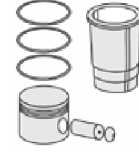
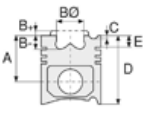
Piston - Blok Montaj
Yüksekliği
(Piston - Block
Assembly Height)





JOHN DEERE - Ø 106,5

86-73157-STD



Motor Özellikleri
(Engine Specifications)

Piston Ölçüleri
(Piston Dimensions)

Piston Parça No
(Piston Part No)

Segman Seti
(Ring Set)

Silindir Gömleği
(Liner)

Silindir Kit
(Assembly Set)

Piston - Blok Montaj
Yüksekliği
(Piston - Block
Assembly Height)

İmalatçı (Manufacturer):
John Deere
Çap (Diameter): 106,5
FM Grup No: 4240

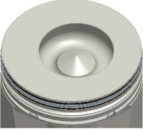
A : 66.300
B- : 20.050
BØ : 55.600
BX : 3.500
D : 95.300
E : 4.500

86-73157-STD
86-73157-STD

2.500
2.420
3.520

3029D (2,9L)
3 Sil. Dizel 60-65-75 HP
5060E, 5065E, 5075E

Pim: 32 x 80



Piston Özellikleri
(Piston Features)

Segman Taşıyıcı
(Ring Carrier)
Gözarası Konik
(Conical Eye Gap)

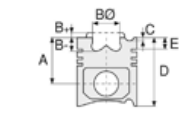




Motor Özellikleri
(Engine Specifications)

İmalatçı (Manufacturer):
John Deere
Çap (Diameter): 106,5
FM Grup No: 4224

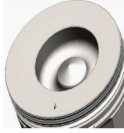
4045 D/T
4 Sil. Dizel
4 VE 6 SİLİNDİR (Cylinder)
5410 , 5510, 5615, 5715,
6700
2001....



Piston Ölçüleri
(Piston Dimensions)

A : 71.720
B- : 23.800
BØ : 57.500
BX : 3.500
D : 100.500
E : 4.100

Pim: 34,925 x 71,7



Piston Özellikleri
(Piston Features)

Segman Taşıyıcı
(Ring Carrier)
Gözarası Konik
(Conical Eye Gap)



Piston Parça No
(Piston Part No)

87-856900-22
87-71425-STDA



Segman Seti
(Ring Set)

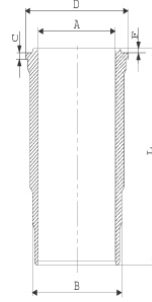
06-856900-90-STD

2.420 CK KV4
2.390 P STD
3.465 CRP STD



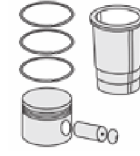
Silindir Gömleği
(Liner)

14-450660-00-WH
B : 120.000
L : 219.000
D : 125.900
C : 6.050
F : 0.800



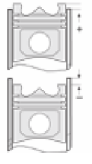
O-RING BİLGİ (O-Ring Information)

24-35027-90/O
1x 117*3,50 FPM
1x 117,07*3,53 MVQ
1x 99*2,3*3,8 NBR



Silindir Kit
(Assembly Set)

89-856900-22-STD
89-71425-STDA



Piston - Blok Montaj
Yüksekliği
(Piston - Block
Assembly Height)

0/0,15

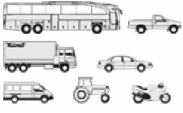
0,40/0,60





JOHN DEERE - Ø 106,5

87-71427-STDB



Motor Özellikleri
(Engine Specifications)

İmalatçı (Manufacturer):
John Deere
Çap (Diameter): 106,5
FM Grup No: 4203

4219 DL O3/O9

4 Sil. Dizel 3588cc 50/53
Kw (68/72 PS)
2030, 2035, 2440, 3030,
3130, 935 BICERDOVER
(Combine Harvester),
WHEEL LOADER JD 410
1968....

3239 DL O1

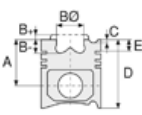
3 Sil. Dizel 2938cc 41 Kw
(56 PS) 16,2:1
3030, 3040, 3050, 3130,
3140, 3350, 3640
1973....

4239 DL O1

4 Sil. Dizel 3918cc 55 Kw
(75 PS) 16,2:1
1040, 1140, 1350, 1447,
1550, 1630, 1640, 1745,
1750, 1840, 1845, 1850
1972....

6359 DL O1

6 Sil. Dizel 5876cc 82,5
Kw (112 PS) 16,2:1
1040, 1140, 1640, 1840,
2030, 2040, 2130, 3040,
3140
1973....



Piston Ölçüleri
(Piston Dimensions)

A : 66.600
B- : 18.700
BØ : 58.400
BX : 3.500
D : 112.000
E : 12.900

Pim: 34,938 x 84



Piston Özellikleri
(Piston Features)

Segman Taşıyıcı
(Ring Carrier)
Gözarası Düz
(Flat Eye Gap)



Piston Parça No
(Piston Part No)

87-181100-12
87-71427-STDB



Segman Seti
(Ring Set)

O6-181100-90-STD

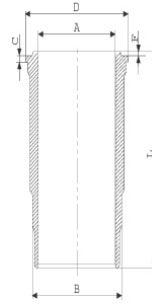
3.150 CKP KV1
2.385 P STD
3.465 CRP STD



Silindir Gömleği
(Liner)

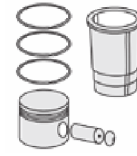
14-450710-00-WH

B : 115.697
L : 196.815
D : 126.000
C : 6.045
F : 0.815



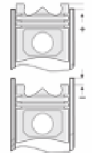
O-RING BİLGİ (O-Ring Information)

24-35027-90/O
1x 117*3,50 FPM
1x 117,07*3,53 MVQ
1x 99*2,3*3,8 NBR



Silindir Kit
(Assembly Set)

89-181100-12-STD
8971427-STDB



Piston - Blok Montaj
Yüksekliği
(Piston - Block
Assembly Height)

+ 0,10 / + 0,30





JOHN DEERE - Ø 106,5

87-71430-STDB



Motor Özellikleri
(Engine Specifications)

İmalatçı (Manufacturer):
John Deere
Çap (Diameter): 106,5
FM Grup No: 4205

3179 T
3 Sil. Dizel 2940cc 59 Kw
(80 PS) 16,8:1
ENDUSTRIYEL (Industrial)

4039 T
4 Sil. Dizel 3920cc 82 Kw
(110 PS) 17,8:1
ENDUSTRIYEL (Industrial)

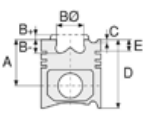
4239 A
4 Sil. Dizel 3918cc 87 Kw
(117 PS) 17,8:1
Turbo Intercooled
ENDUSTRIYEL (Industrial)
1987 - 1993

4045 T
4 Sil. Dizel 4524cc 89 Kw
(120 PS) 16,3:1
Turbocharge
6400
1998....

6359 A
6 Sil. Dizel 5876cc 130 Kw
(176 PS) 16,8:1
ENDUSTRIYEL (Industrial)
1987 - 1993

6059 T
6 Sil. Dizel 5878cc 123 Kw
(165 PS) 17,8:1
Turbocharge
ENDUSTRIYEL (Industrial)

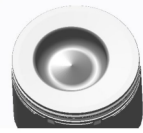
300T,6068T
6 Sil. Dizel 6786cc 130 Kw
(176 PS) 16,3:1
Turbocharge
6506, 6800, 6900, 7400,
7600
1997....



Piston Ölçüleri
(Piston Dimensions)

A : 66.300
B- : 18.800
BØ : 58.500
BX : 3.500
D : 112.000
E : 4.000

Pim: 41,275 x 84



Piston Özellikleri
(Piston Features)

Segman Taşıyıcı
(Ring Carrier)
Gözarası Düz
(Flat Eye Gap)



Piston Parça No
(Piston Part No)

87-181100-32
87-71430-STDB



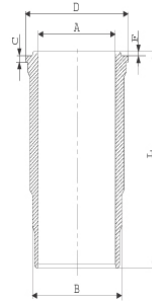
Segman Seti
(Ring Set)

06-181100-90-STD
3.150 CKP KV1
2.385 P STD
3.465 CRP STD



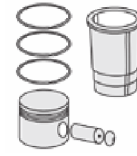
Silindir Gömleği
(Liner)

14-450710-00-WH
B : 115.697
L : 196.815
D : 126.000
C : 6.045
F : 0.815



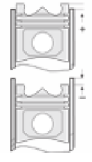
O-RING BİLGİ (O-Ring Information)

24-35027-90/0
1x 117*3,50 FPM
1x 117,07*3,53 MVQ
1x 99*2,3*3,8 NBR



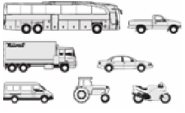
Silindir Kit
(Assembly Set)

89-181100-32-STD
89-71430-STDB



Piston - Blok Montaj
Yüksekliği
(Piston - Block
Assembly Height)

+ 0,14 / + 0,20



Motor Özellikleri
(Engine Specifications)

İmalatçı (Manufacturer):
John Deere
Çap (Diameter): 106,5
FM Grup No: 4206

3239 DL O1

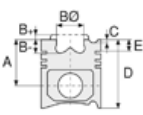
3 Sil. Dizel 2938cc 41 Kw
(56 PS) 16,2:1
3030, 3040, 3050, 3140,
3350, 3640

4239 DL O1

4 Sil. Dizel 3918cc 55 Kw
(75 PS) 16,2:1
1040, 1140, 1350, 1447,
1550, 1630, 1640, 1750,
1754, 1840, 1845, 1850,
1950, 2040, 2130, 2140,
2250, 2450, 2650, 2850,
4050, 840, 940

6359 DLO 1 / DL / O1 / O2

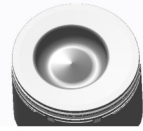
6 Sil. Dizel 5876cc 82,5
Kw (112 PS) 16,2:1
1040, 1140, 1350, 1447,
1550, 1630, 1640, 1750,
1754, 1840, 1845, 1850,
1950, 2030, 2040, 2130,
2140, 2250, 2450, 2650,
2850, 3040, 3140
1973....



Piston Ölçüleri
(Piston Dimensions)

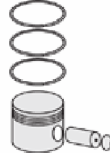
A : 66.300
B- : 18.750
BØ : 58.400
BX : 3.500
D : 112.000
E : 4.000

Pim: 34,938 x 84



Piston Özellikleri
(Piston Features)

Segman Taşıyıcı
(Ring Carrier)
Gözarası Düz
(Flat Eye Gap)



Piston Parça No
(Piston Part No)

87-181100-92
87-71431-STD A

87-857200-82
87-71431-STD B



Segman Seti
(Ring Set)

06-181100-90-STD

3.150 CKP KV1
2.385 P STD
3.465 CRP STD

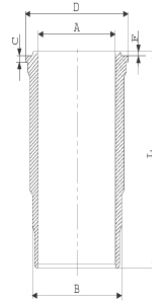
06-857200-00-STD

3.150 CKS KV4
2.385 P IKA
3.465 CR GOE

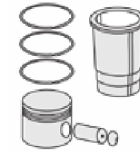


Silindir Gömleği
(Liner)

14-450710-00-WH
B : 115.697
L : 196.815
D : 126.000
C : 6.045
F : 0.815

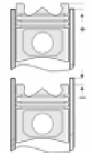


O-RING BİLGİ (O-Ring
Information)
24-35027-90/O
1x 117*3,50 FPM
1x 117,07*3,53 MVQ
1x 99*2,3*3,8 NBR



Silindir Kit
(Assembly Set)

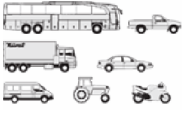
89-181100-92-STD
89-71431-STD A



Piston - Blok Montaj
Yüksekliği
(Piston - Block
Assembly Height)

+ 0,10 / + 0,30



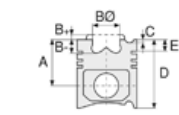


Motor Özellikleri
(Engine Specifications)

İmalatçı (Manufacturer):
John Deere
Çap (Diameter): 106,5
FM Grup No: 4225

4045 T, 5276T

4 Sil. Dizel
4 VE 6 SİLİNDİR (Cylinder)
340D, 344D, 448D, 6100,
6200, 6300, 6500, 6510,
6800, 6900, SE6400
1998....



Piston Ölçüleri
(Piston Dimensions)

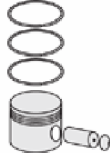
A : 71.620
B- : 22.000
BØ : 60.200
BX : 3.500
D : 120.000
E : 4.000

Pim: 41,275 x 84,3



Piston Özellikleri
(Piston Features)

Segman Taşıyıcı
(Ring Carrier)
Gözarası Düz
(Flat Eye Gap)



Piston Parça No
(Piston Part No)

87-181100-62
87-71432-STD

87-857200-42
87-71432-STD A



Segman Seti
(Ring Set)

06-181100-90-STD

3.150 CKP KV1
2.385 P STD
3.465 CRP STD

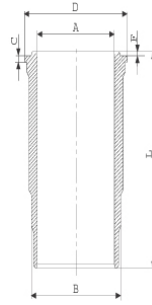
06-857200-00-STD

3.150 CKS KV4
2.385 P IKA
3.465 CR GOE



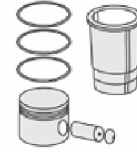
Silindir Gömleği
(Liner)

14-450660-00-WH
B : 120.000
L : 219.000
D : 125.900
C : 6.050
F : 0.800



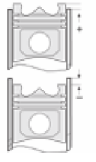
O-RING BİLGİ (O-Ring Information)

24-35027-90/0
1x 117*3,50 FPM
1x 117,07*3,53 MVQ
1x 99*2,3*3,8 NBR



Silindir Kit
(Assembly Set)

89-181100-62-STD
89-71432-STD



Piston - Blok Montaj
Yüksekliği
(Piston - Block
Assembly Height)

+0,07 /+0,25





JOHN DEERE - Ø 106,5

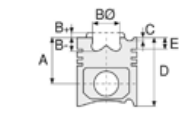
87-71433-STD



Motor Özellikleri
(Engine Specifications)

İmalatçı (Manufacturer):
John Deere
Çap (Diameter): 106,5
FM Grup No: 4226

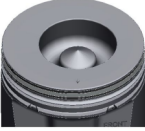
4045 D/T
4 Sil. Dizel
4 VE 6 SİLİNDİR (Cylinder)
6515, 5210, 5310, 5715,
6510
1998....



Piston Ölçüleri
(Piston Dimensions)

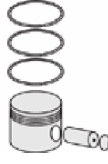
A : 71.720
B- : 25.500
BØ: 57.000
BX : 3.500
D : 100.650
E : 4.000

Pim: 34,925 x 71,7



Piston Özellikleri
(Piston Features)

Segman Taşıyıcı
(Ring Carrier)
Gözarası Konik
(Conical Eye Gap)



Piston Parça No
(Piston Part No)

87-181100-72
87-71433-STD



Segman Seti
(Ring Set)

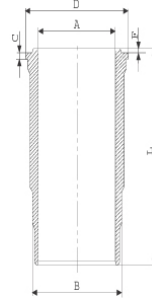
06-181100-90-STD

3.150 CKP KV1
2.385 P STD
3.465 CRP STD



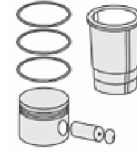
Silindir Gömleği
(Liner)

14-450660-00-WH
B : 120.000
L : 219.000
D : 125.900
C : 6.050
F : 0.800



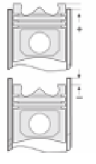
O-RING BİLGİ (O-Ring Information)

24-35027-90/O
1x 117*3,50 FPM
1x 117,07*3,53 MVQ
1x 99*2,3*3,8 NBR



Silindir Kit
(Assembly Set)

89-181100-72-STD
89-71433-STD



Piston - Blok Montaj
Yüksekliği
(Piston - Block
Assembly Height)

+0,07 /+0,25

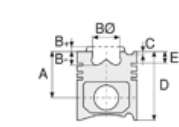




Motor Özellikleri
(Engine Specifications)

İmalatçı (Manufacturer):
John Deere
Çap (Diameter): 106,5
FM Grup No: 4227

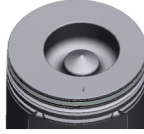
6068 D/T
4 Sil. Dizel
4 VE 6 SİLİNDİR (Cylinder)
6205, 6610, 6110, 6210,
6405
1999....



Piston Ölçüleri
(Piston Dimensions)

A : 71.500
B- : 25.800
BØ : 56.800
BX : 3.500
D : 104.800
E : 4.000

Pim: 41,275 x 71,6



Piston Özellikleri
(Piston Features)

Segman Taşıyıcı
(Ring Carrier)
Gözarası Konik
(Conical Eye Gap)



Piston Parça No
(Piston Part No)

87-181100-82
87-71434-STD



Segman Seti
(Ring Set)

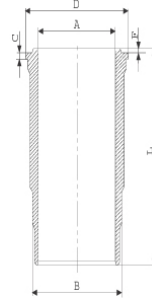
06-181100-90-STD

3.150 CKP KV1
2.385 P STD
3.465 CRP STD



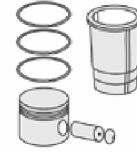
Silindir Gömleği
(Liner)

14-450660-00-WH
B : 120.000
L : 219.000
D : 125.900
C : 6.050
F : 0.800



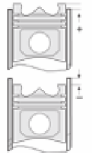
O-RING BİLGİ (O-Ring Information)

24-35027-90/O
1x 117*3,50 FPM
1x 117,07*3,53 MVQ
1x 99*2,3*3,8 NBR



Silindir Kit
(Assembly Set)

89-181100-82-STD
89-71434-STD



Piston - Blok Montaj
Yüksekliği
(Piston - Block
Assembly Height)

+0,07 /+0,25





JOHN DEERE - Ø 106,5

87-73153-STD

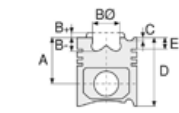


Motor Özellikleri
(Engine Specifications)

İmalatçı (Manufacturer):
John Deere
Çap (Diameter): 106,5
FM Grup No: 4243

6.8 L POWERTECH
TIER 3

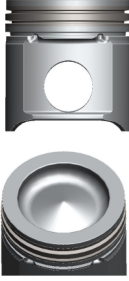
6 Sil. Dizel 6800cc 139-
225 HP
7630, 7730, 7830, 7930
2011....



Piston Ölçüleri
(Piston Dimensions)

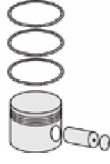
A : 71.600
B- : 14.500
BØ : 78.000
D : 108.600
E : 8.400

Pim: 41,275 x 77



Piston Özellikleri
(Piston Features)

Segman Taşıyıcı
(Ring Carrier)
Gözarası Konik
(Conical Eye Gap)



Piston Parça No
(Piston Part No)

87-857400-02
87-73153-STD



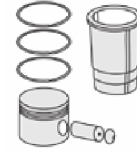
Segman Seti
(Ring Set)

06-857400-00-STD

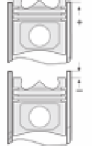
3.150 CKS KV4
2.385 P KV4
3.465 CR GOE



Silindir Gömleği
(Liner)



Silindir Kit
(Assembly Set)



Piston - Blok Montaj
Yüksekliği
(Piston - Block
Assembly Height)

+0,07 /+0,25





JOHN DEERE - Ø 106,5

87-73154-STD

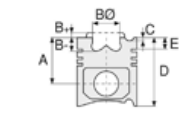


Motor Özellikleri
(Engine Specifications)

İmalatçı (Manufacturer):
John Deere
Çap (Diameter): 106,5
FM Grup No: 4242

4.5L POWERTECH
TIER 3

4 Sil. Dizel 4500cc
48-54 hp
6000 Serisi, 7000 Serisi
2011....



Piston Ölçüleri
(Piston Dimensions)

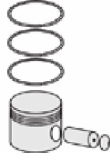
A : 71.600
B- : 13.600
B : 75.650
BX : 2.800
D : 108.600
E : 4.000

Pim: 41,275 x 77



Piston Özellikleri
(Piston Features)

Segman Taşıyıcı
(Ring Carrier)
Gözarası Konik
(Conical Eye Gap)



Piston Parça No
(Piston Part No)

87-857200-02
87-73154-STD



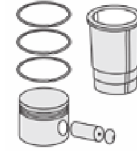
Segman Seti
(Ring Set)

06-857200-00-STD

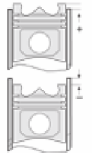
3.150 CKS KV4
2.385 P IKA
3.465 CR GOE



Silindir Gömleği
(Liner)



Silindir Kit
(Assembly Set)



Piston - Blok Montaj
Yüksekliği
(Piston - Block
Assembly Height)



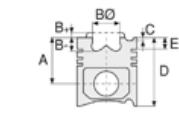


Motor Özellikleri
(Engine Specifications)

İmalatçı (Manufacturer):
John Deere
Çap (Diameter): 106,5
FM Grup No: 4241

3029T (2,9L)

3 Sil. Dizel 64-71 HP
5045D, 5055E, 5065E,
5075E, 5303, 5403, 5503
2010....



Piston Ölçüleri
(Piston Dimensions)

A : 66.300
B- : 21.750
BØ : 55.200
BX : 3.500
D : 95.300
E : 4.350

Pim: 32 x 80



Piston Özellikleri
(Piston Features)

Segman Taşıyıcı
(Ring Carrier)
Gözarası Konik
(Conical Eye Gap)



Piston Parça No
(Piston Part No)

87-856900-42
87-73158-STD



Segman Seti
(Ring Set)

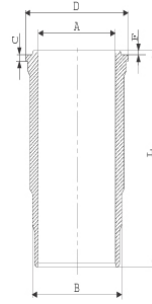
06-856900-90-STD

2.420  CK KV4
2.390  P STD
3.465  CRP STD

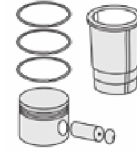


Silindir Gömleği
(Liner)

14-450710-00-WH
B : 115.697
L : 196.815
D : 126.000
C : 6.045
F : 0.815

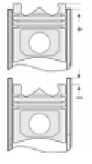


O-RING BİLGİ(O-Ring
Information)
24-35027-90/0
1x 117*3,50 FPM
1x 117,07*3,53 MVQ
1x 99*2,3*3,8 NBR



Silindir Kit
(Assembly Set)

88-856900-42-STD
88-73158-STD



Piston - Blok Montaj
Yüksekliği
(Piston - Block
Assembly Height)

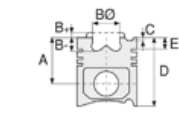




Motor Özellikleri
(Engine Specifications)

İmalatçı (Manufacturer):
John Deere
Çap (Diameter): 106,5
FM Grup No: 4238

3029T
Dizel 2900cc
5303, 5403



Piston Ölçüleri
(Piston Dimensions)

A : 66.300
B- : 18.800
BØ : 58.300
BX : 3.500
D : 95.300
E : 4.200

Pim: 32 x 80



Piston Özellikleri
(Piston Features)

Segman Taşıyıcı
(Ring Carrier)
Gözarası Konik
(Conical Eye Gap)



Piston Parça No
(Piston Part No)

87-856900-02
87-73160-STDA



Segman Seti
(Ring Set)

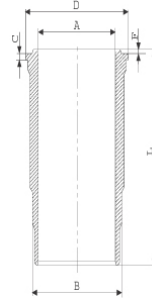
06-856900-90-STD

2.420 CK KV4
2.390 P STD
3.465 CRP STD



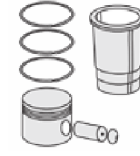
Silindir Gömleği
(Liner)

14-450710-00-WH
B : 115.697
L : 196.815
D : 126.000
C : 6.045
F : 0.815



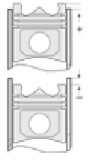
O-RING BİLGİ (O-Ring Information)

24-35027-90/0
1x 117*3,50 FPM
1x 117,07*3,53 MVQ
1x 99*2,3*3,8 NBR



Silindir Kit
(Assembly Set)

89-856900-02-STD
89-73160-STDA



Piston - Blok Montaj
Yüksekliği
(Piston - Block
Assembly Height)



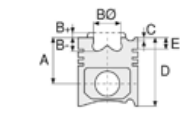


Motor Özellikleri
(Engine Specifications)

İmalatçı (Manufacturer):
John Deere
Çap (Diameter): 106,5
FM Grup No: 4244

6068H TIER 3

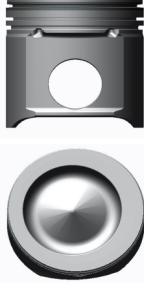
6 Sil. Dizel 180-275HP
540H, 548H, 624J, 640G,
648H LOADER,
GENERATOR (Generator)
2011....



Piston Ölçüleri
(Piston Dimensions)

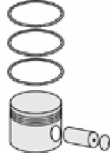
A : 71.700
B- : 14.550
BØ : 78.000
D : 108.500
E : 4.200

Pim: 41,275 x 77



Piston Özellikleri
(Piston Features)

Segman Taşıyıcı
(Ring Carrier)
Yağ Püskürtme Oyuğu
(Oil Jet Cut-out)
Gözarası Konik
(Conical Eye Gap)



Piston Parça No
(Piston Part No)

87-857200-22
87-73161-STD



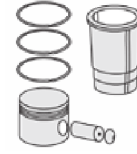
Segman Seti
(Ring Set)

06-857200-00-STD

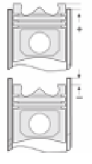
3.150  CKS KV4
2.385  P IKA
3.465  CR GOE



Silindir Gömleği
(Liner)



Silindir Kit
(Assembly Set)



Piston - Blok Montaj
Yüksekliği
(Piston - Block
Assembly Height)

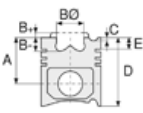




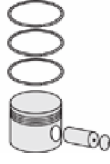
Motor Özellikleri
(Engine Specifications)

İmalatçı (Manufacturer):
John Deere
Çap (Diameter): 108
FM Grup No: 4239

6404T
6 Sil. Dizel 72-112 KW /
97-150 PS
4000 SERISI
1970....



Piston Ölçüleri
(Piston Dimensions)



Piston Parça No
(Piston Part No)



Segman Seti
(Ring Set)

06-857000-90-STD

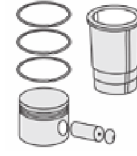
3.960  CKS KV1
3.960  CKS KV1
4.747  CR STD



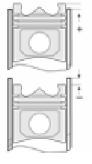
Silindir Gömleği
(Liner)

14-450760-00-WH

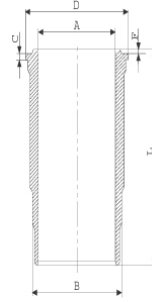
B : 117.520
L : 232.500
D : 131.520
C : 6.440
F : 0.610



Silindir Kit
(Assembly Set)



Piston - Blok Montaj
Yüksekliği
(Piston - Block
Assembly Height)



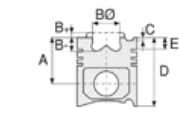


Motor Özellikleri
(Engine Specifications)

İmalatçı (Manufacturer):
John Deere
Çap (Diameter): 108
FM Grup No: 4233

4270 D
4 Sil. Dizel
3010 TRK, 3020 TRK,
500, 500A, 500B

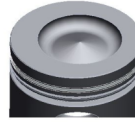
6404 D
6 Sil. Dizel
4010 TRK, 4020 TRK,
600



Piston Ölçüleri
(Piston Dimensions)

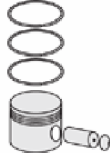
A : 70.100
B- : 14.800
BØ : 69.200
BX : 3.100
D : 124.600
E : 16.900

Pim: 38,1 x 85,1



Piston Özellikleri
(Piston Features)

Segman Taşıyıcı
(Ring Carrier)
Gözarası Düz
(Flat Eye Gap)



Piston Parça No
(Piston Part No)

87-856400-22
87-73150-STD



Segman Seti
(Ring Set)

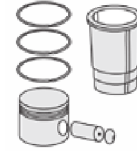
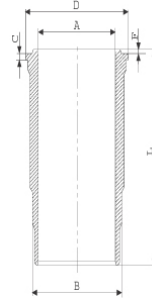
06-856400-90-STD

3.170 CKP KV1
2.385 CKP STD
6.335 CRP STD



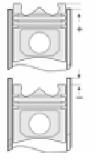
Silindir Gömleği
(Liner)

14-450740-00-WH
B : 117.550
L : 233.000
D : 130.250
C : 6.425
F : 1.000



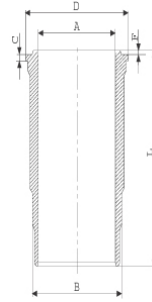
Silindir Kit
(Assembly Set)

88-856400-22-STD
88-73150-STD



Piston - Blok Montaj
Yüksekliği
(Piston - Block
Assembly Height)

14-450740-00-WH
B : 117.550
L : 233.000
D : 130.250
C : 6.425
F : 1.000



88-856400-32-STD
88-73150-STD

87-856600-02
87-73150-STD

06-856600-00-STD

3.170 PS KV1
2.385 PS STD
6.335 CRP STD

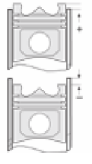
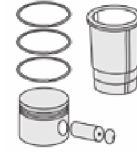
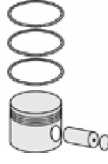
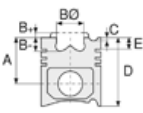
14-450740-00-WH

88-856600-02-STD
88-73150-STD

14-450760-00-WH

88-856600-22-STD
88-73150-STD





Motor Özellikleri
(Engine Specifications)

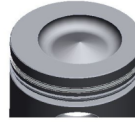
İmalatçı (Manufacturer):
John Deere
Çap (Diameter): 108
FM Grup No: 4230

4270 D
4 Sil. Dizel 4400cc
3000 SERISI, 4000
SERISI

Piston Ölçüleri
(Piston Dimensions)

A : 69.950
B- : 18.100
B : 63.400
BX : 2.250
D : 124.300
E : 16.500

Pim: 38,1 x 85,1



Piston Özellikleri
(Piston Features)

Segman Taşıyıcı
(Ring Carrier)
Gözarası Düz
(Flat Eye Gap)

Piston Parça No
(Piston Part No)

87-856400-02
87-73151-STD

Segman Seti
(Ring Set)

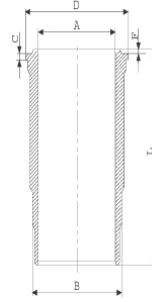
06-856400-90-STD

3.170 CKP KV1
2.385 CKP STD
6.335 CRP STD

Silindir Gömleği
(Liner)

14-450760-00-WH

B : 117.520
L : 232.500
D : 131.520
C : 6.440
F : 0.610

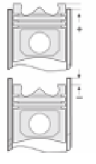
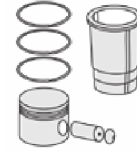
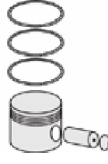
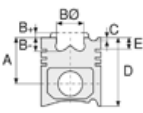


Silindir Kit
(Assembly Set)

88-856400-02-STD
88-73151-STD

Piston - Blok Montaj
Yüksekliği
(Piston - Block
Assembly Height)





Motor Özellikleri
(Engine Specifications)

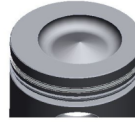
İmalatçı (Manufacturer):
John Deere
Çap (Diameter): 108
FM Grup No: 4232

6404D
6 Sil. Dizel 6600cc
4000 Serisi

Piston Ölçüleri
(Piston Dimensions)

A : 70.100
B- : 18.750
BØ : 63.400
BX : 2.250
D : 124.700
E : 10.000

Pim: 38,1 x 85,1



Piston Özellikleri
(Piston Features)

Segman Taşıyıcı
(Ring Carrier)
Gözarası Konik
(Conical Eye Gap)

Piston Parça No
(Piston Part No)

87-856800-02
87-73152-STD

Segman Seti
(Ring Set)

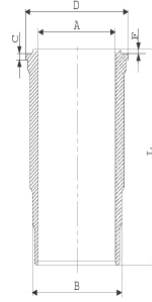
06-856800-90-STD

3.170 CKP KV1
2.385 CKP GOE
4.747 CRP STD

Silindir Gömleği
(Liner)

14-450760-00-WH

B : 117.520
L : 232.500
D : 131.520
C : 6.440
F : 0.610



Silindir Kit
(Assembly Set)

88-856800-02-STD
88-73152-STD

Piston - Blok Montaj
Yüksekliği
(Piston - Block
Assembly Height)



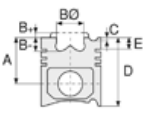


Motor Özellikleri
(Engine Specifications)

İmalatçı (Manufacturer):
John Deere
Çap (Diameter): 115,9
FM Grup No: 4229

6466T / 6076A

6 Sil. Dizel
9600, 4255, 4455, 4760,
644E, 9500



Piston Ölçüleri
(Piston Dimensions)

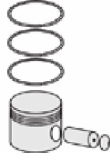
A : 70.400
B- : 14.500
BØ : 76.000
BX : 6.500
D : 125.000
E : 6.500

Pim: 47,61 x 91,45



Piston Özellikleri
(Piston Features)

Çift Segman Taşıyıcılı
Gözarası Konik
(Double Ring Carrier
Conical Eye Gap)



Piston Parça No
(Piston Part No)

87-856100-02
87-71416-STD



Segman Seti
(Ring Set)

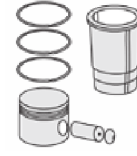
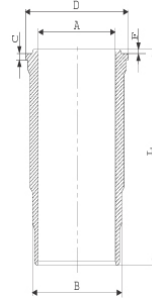
06-856100-00-STD

3.960 CRP KV1
3.960 CRP KV1
3.980 CRP KV1



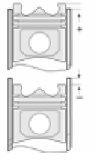
Silindir Gömleği
(Liner)

14-450650-00-WH
B : 125.080
L : 232.700
D : 135.200
C : 8.200
F : 1.200



Silindir Kit
(Assembly Set)

88-856100-02-STD
88-71416-STD



Piston - Blok Montaj
Yüksekliği
(Piston - Block
Assembly Height)





Motor Özellikleri
(Engine Specifications)

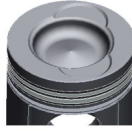
İmalatçı (Manufacturer):
John Deere
Çap (Diameter): 115,9
FM Grup No: 4228

6466D
6 Sil. Dizel
4250 , 4440, 5720, 7720,
9940

Piston Ölçüleri
(Piston Dimensions)

A : 70.300
B- : 19.600
BØ : 68.600
C1 : 2.200
C2 : 2.200
D : 124.900
E : 16.500

Pim: 47,61 x 91,45



Piston Özellikleri
(Piston Features)

Çift Segman Taşıyıcı
Gözarası Konik
(Double Ring Carrier
Conical Eye Gap)

Piston Parça No
(Piston Part No)

87-856200-02
87-71417-STD

Segman Seti
(Ring Set)

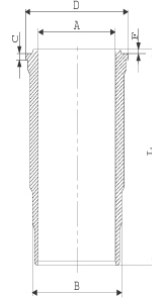
06-856200-00-STD

3.960 CRP KV1
3.960 CRP KV1
4.474 CRP KV1

Silindir Gömleği
(Liner)

14-450650-00-WH

B : 125.080
L : 232.700
D : 135.200
C : 8.200
F : 1.200



Silindir Kit
(Assembly Set)

88-856200-02-STD
88-71417-STD

Piston - Blok Montaj
Yüksekliği
(Piston - Block
Assembly Height)

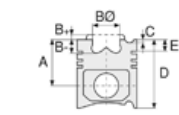




Motor Özellikleri
(Engine Specifications)

İmalatçı (Manufacturer):
John Deere
Çap (Diameter): 115,9
FM Grup No: 4235

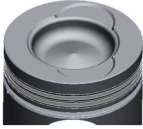
6466A, 6466T
6 Sil. Dizel 7600cc
4440 TRK, 4640 TRK,
4840 TRK, 5720, 644D,
6620, 6622, 740A, 762A,
7720, 8430 TRK, 8440
TRK, 8450 TRK, 8820,
9940



Piston Ölçüleri
(Piston Dimensions)

A : 70.350
B- : 20.500
BØ : 68.600
C1 : 2.000
C2 : 2.000
D : 124.900
E : 16.500

Pim: 47,61 x 91,45



Piston Özellikleri
(Piston Features)

Çift Segman Taşıyıcı
Gözarası Konik
(Double Ring Carrier
Conical Eye Gap)



Piston Parça No
(Piston Part No)

87-856200-22
87-71418-STD A



Segman Seti
(Ring Set)

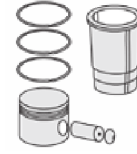
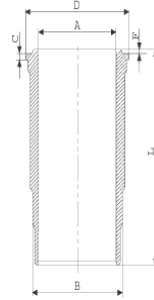
06-856200-00-STD

3.960 CRP KV1
3.960 CRP KV1
4.474 CRP KV1



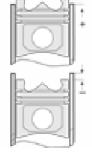
Silindir Gömleği
(Liner)

14-450650-00-WH
B : 125.080
L : 232.700
D : 135.200
C : 8.200
F : 1.200



Silindir Kit
(Assembly Set)

88-856200-22-STD
88-71418-STD A



Piston - Blok Montaj
Yüksekliği
(Piston - Block
Assembly Height)

87-856500-02
87-71418-STD

06-856500-90-STD

3.960 CKP KV1
3.960 CKP KV1
4.474 CRP STD

14-450650-00-WH

88-856500-02-STD
88-71418-STD

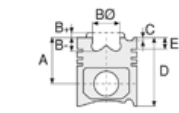




Motor Özellikleri
(Engine Specifications)

İmalatçı (Manufacturer):
John Deere
Çap (Diameter): 115,9
FM Grup No: 4231

6081 D
6 Sil. Dizel 8100cc
7000 Serisi, 8000 Serisi



Piston Ölçüleri
(Piston Dimensions)

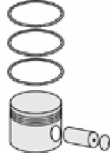
A : 66.550
B- : 15.300
BØ : 73.000
BX : 6.150
D : 111.300
E : 6.500

Pim: 47,61 x 91,45



Piston Özellikleri
(Piston Features)

Çift Segman Taşıyıcı
Gözarası Konik
(Double Ring Carrier
Conical Eye Gap)



Piston Parça No
(Piston Part No)

87-856700-02
87-71419-STD



Segman Seti
(Ring Set)

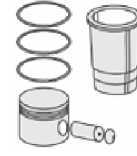
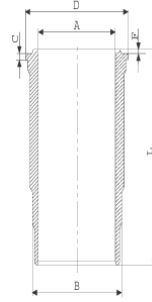
06-856700-90-STD

3.960  CKP KV1
3.250  P KV1
4.000  ST



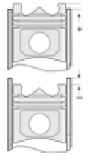
Silindir Gömleği
(Liner)

14-450750-00-WH
B : 125.055
L : 228.000
D : 135.200
C : 12.000
F : 1.200



Silindir Kit
(Assembly Set)

88-856700-02-STD
88-71419-STD



Piston - Blok Montaj
Yüksekliği
(Piston - Block
Assembly Height)

+0,30/+0,50

