



K.BREMSE - Ø 80

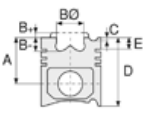
06-897900-00-STD



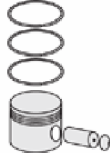
Motor Özellikleri
(Engine Specifications)

İmalatçı (Manufacturer):
K.Bremse
Çap (Diameter): 80
FM Grup No: 4304

KOMPRESÖR
(Compressor)



Piston Ölçüleri
(Piston Dimensions)



Piston Parça No
(Piston Part No)



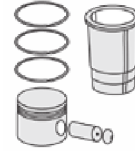
Segman Seti
(Ring Set)

06-897900-00-STD
06-897900-00 0,50 mm

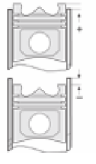
2.500  P STD
2.500  P STD
4.000  P STD



Silindir Gömleği
(Liner)



Silindir Kit
(Assembly Set)



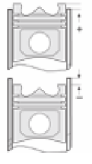
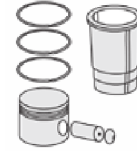
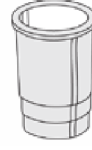
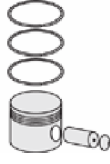
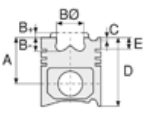
Piston - Blok Montaj
Yüksekliği
(Piston - Block
Assembly Height)





K.BREMSE - Ø 88

06-251000-20-STD



Motor Özellikleri
(Engine Specifications)

Piston Ölçüleri
(Piston Dimensions)

Piston Parça No
(Piston Part No)

Segman Seti
(Ring Set)

Silindir Gömleği
(Liner)

Silindir Kit
(Assembly Set)

Piston - Blok Montaj
Yüksekliği
(Piston - Block
Assembly Height)

İmalatçı (Manufacturer):
K.Bremse
Çap (Diameter): 88
FM Grup No: 4301

OM 355 M.BENZ
1 Sil. Dizel
HAVA KOMPRESORU
(Air Compressor)

OM 360A M.BENZ
1 Sil. Dizel
HAVA KOMPRESORU
(Air Compressor)

D 21 MAN
1 Sil. Dizel
HAVA KOMPRESORU
(Air Compressor)

06-251000-20-STD
06-251007-20 0,50 mm
06-251011-20 1,00 mm

2.000  STD
2.000  STD
2.500  STD
5.000  STD

