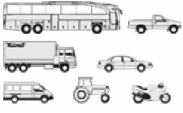




KARSAN-FIAT - Ø 88

87-79954-STD

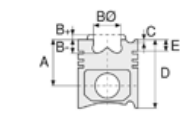


Motor Özellikleri
(Engine Specifications)

İmalatçı (Manufacturer):
KARSAN-FIAT
Çap (Diameter): Ø 88
FM Grup No: 4405

C 13 - FIA Euro5

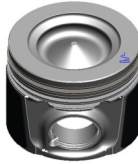
4 Sil. Dizel 2300cc
96 KW-129 PS
Karsan İle Ortak Motor
(With Karsan
Common Engine)
Jest
2015...



Piston Ölçüleri
(Piston Dimensions)

A : 57.000
B- : 14.300
BØ : 49.000
D : 84.000
E : 8.000

Pim : 31 x 67



Piston Özellikleri
(Piston Features)

Segman Taşıyıcı
(Ring Carrier)
Soğutma Kanallı
(Cooling Gallery)
Yağ Püskürtme Oyuğu
(Oil Jet Cut-Out)
Göz Arası Konik
(Conical Eye Gap)






Piston Parça No
(Piston Part No)

87-844900-32
87-79954-STD
87-844906-32
87-79954-0,40



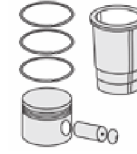
Segman Seti
(Ring Set)

06-844900-00-STD
06-844906-00-0,40 mm
2.500  CKS KV4
2.000  F14
2.500  CKS GOE

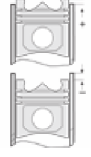
Yağ Segmanı Matkap Delik
(Oil Ring Drill Hole)



Silindir Gömleği
(Liner)



Silindir Kit
(Assembly Set)



Piston - Blok Montaj
Yüksekliği
(Piston - Block
Assembly Height)

1.10 mm Conta ile
(With Gasket) 0,30/0,40

1.20 mm Conta ile
(With Gasket) 0,40/0,50

1.30 mm Conta ile
(With Gasket) 0,50/0,60

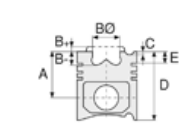




Motor Özellikleri
(Engine Specifications)

İmalatçı (Manufacturer):
KARSAN-IVECO LKW
Çap (Diameter): Ø 88
FM Grup No: 4087

F1A Euro 5
4 Sil. Dizel 2300cc
107 KW-146 PS
Daily
2014...



Piston Ölçüleri
(Piston Dimensions)

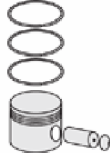
A : 57.000
B - : 14.300
BØ : 49.100
D : 84.000
E : 8.300

Pim : 31 x 67



Piston Özellikleri
(Piston Features)

Segman Taşıyıcı
(Ring Carrier)
Soğutma Kanallı
(Cooling Gallery)
Yağ Püskürtme Oyuğu
(Oil Jet Cut-Out)
Gözarası Konik
(Conical Eye Gap)



Piston Parça No
(Piston Part No)

87-845000-02
87-70678-STD
87-845006-02
87-70678-0,40



Segman Seti
(Ring Set)

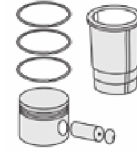
06-845000-00-STD
06-845006-00-0,40 mm
1.750 CK KV1
1.500 F14
2.000 CR STD

Yağ Segmanı Matkap Delik
(Oil Ring Drill Hole)

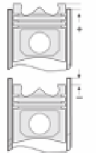


Silindir Gömleği
(Liner)

14-022370-00-D
B : 91.000
L : 158.000
D : 92.500
C : 5.000



Silindir Kit
(Assembly Set)



Piston - Blok Montaj
Yüksekliği
(Piston - Block
Assembly Height)

