



KHD - Ø 50

06-743300-20-STD



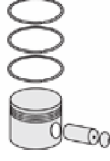
Motor Özellikleri
(Engine Specifications)

İmalatçı (Manufacturer):
KHD
Çap (Diameter): Ø 50
FM Grup No: 4501

1 Sil. Dizel MİNİBÜS
HAVA KOMPRESÖRÜ
(Minibus Air Compressor)



Piston Ölçüleri
(Piston Dimensions)



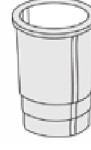
Piston Parça No
(Piston Part No)



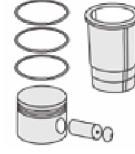
Segman Seti
(Ring Set)

06-743300-20-STD

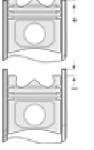
2.500  STD
2.500  STD
2.500  STD
4.000  STD



Silindir Gömleği
(Liner)



Silindir Kit
(Assembly Set)



Piston - Blok Montaj
Yüksekliği
(Piston - Block
Assembly Height)





KHD - Ø 91

87-71308-STD A



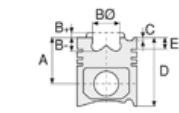
Motor Özellikleri
(Engine Specifications)

İmalatçı (Manufacturer):
KHD
Çap (Diameter): Ø 91
FM Grup No: 4589

F2M 1011 F
2 Sil. Dizel 1366cc
29 - 31 Hp
1997...

F3M 1011 F
3 Sil. Dizel 2185cc
44 - 49 Hp
1994...

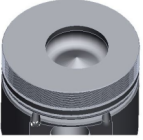
F4M 1011 F Euro 1
4 Sil. Dizel 2914cc
60 - 65 Hp
1994...



Piston Ölçüleri
(Piston Dimensions)

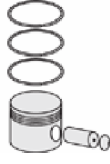
A : 51.700
B- : 19.200
BØ : 42.000
BX : 4.000
BY : 1.500
D : 81.700
E : 16.100

Pim : 26 x 65



Piston Özellikleri
(Piston Features)

Gözarası Düz
(Flat Eye Gap)



Piston Parça No
(Piston Part No)

87-862800-12
87-71308-STD A



Segman Seti
(Ring Set)

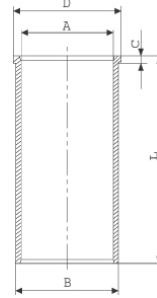
06-862800-20-STD
06-862807-20-0,50 mm

2.000 CR KV1
2.000 GOE
3.000 GOE



Silindir Gömleği
(Liner)

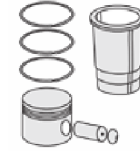
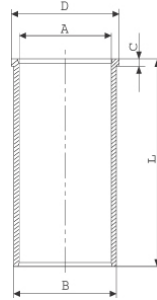
14-021040-00-D
B : 94.100
L : 175.500
D : 99.000
C : 5.000



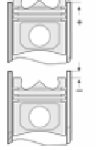
14-021041-00-D
B : 94.600
L : 175.500
D : 99.500
C : 5.500

Dış Çap 0,50mm Farklı
(Outside Diameter
0.50mm Different)

14-029750-00-DH
B : 94.010
L : 175.500
D : 98.900
C : 4.550



Silindir Kit
(Assembly Set)



Piston - Blok Montaj
Yüksekliği
(Piston - Block
Assembly Height)





KHD - Ø 91

87-71309-STD A



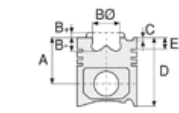
Motor Özellikleri
(Engine Specifications)

İmalatçı (Manufacturer):
KHD
Çap (Diameter): Ø 91
FM Grup No: 4502

F2 L 1011 F
2 Sil. Dizel 1366cc 21
Kw (29 PS)

F3 L 1011 F
3 Sil. Dizel 2049cc 31
Kw (42 PS)
1988 - 1990

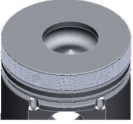
F4 L 1011 F
4 Sil. Dizel 2732cc 42
Kw (57 PS)
1988 - 1990



Piston Ölçüleri
(Piston Dimensions)

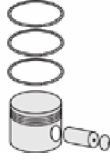
A : 55.370
B - : 19.800
BØ : 40.000
BX : 3.000
BY : 1.500
D : 86.370
E : 16.100

Pim : 26 x 65



Piston Özellikleri
(Piston Features)

Gözarası Konik
(Conical Eye Gap)



Piston Parça No
(Piston Part No)

87-252500-14
87-71309-STD2
- 0,20 mm Kısa (Short)

87-252500-12
87-71309-STD A

87-252507-12
87-71309-050A

87-252511-12
87-71309-100A

87-862800-22
87-71309-STD B

87-862807-22
87-71309-050B



Segman Seti
(Ring Set)

06-252500-20-STD
06-252507-20-0,50 mm
06-252511-20-1,00 mm

2.000 CR KV1
2.000 STD
3.000 STD

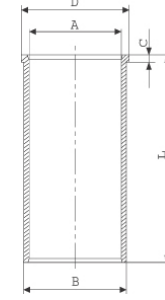
06-862800-20-STD
06-862807-20-0,50 mm

2.000 CR KV1
2.000 GOE
3.000 GOE



Silindir Gömleği
(Liner)

14-021040-00-D
B : 94.100
L : 175.500
D : 99.000
C : 5.000



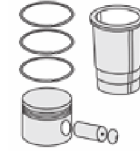
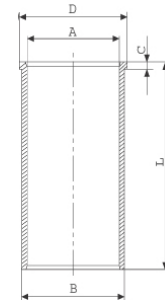
14-021040-00-D

14-021041-00-D
B : 94.600
L : 175.500
D : 99.500
C : 5.500

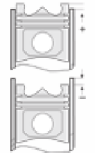
Dış Çap 0,50mm Farklı
(Outside Diameter
0,50mm Different)

14-021041-00 D
Dış Çap 0,50mm Farklı
(Outside Diameter
0,50mm Different)

14-029750-00-DH
B : 94.010
L : 175.500
D : 98.900



Silindir Kit
(Assembly Set)



Piston - Blok Montaj
Yüksekliği
(Piston - Block
Assembly Height)

1 Kertik (Notch) 0,59 / 0,69

2 Kertik (Notch) 0,69 / 0,76

3 Kertik (Notch) 0,76 / 0,83





KHD - Ø 91

87-71310-STDB



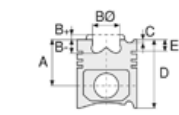
Motor Özellikleri
(Engine Specifications)

İmalatçı (Manufacturer):
KHD
Çap (Diameter): Ø 91
FM Grup No: 4503

F2 L 1011
2 Sil. Dizel 1366cc 21
Kw (29 PS)
1989...

F3 L 1011
3 Sil. Dizel 2049cc 31
Kw (42 PS)
1989...

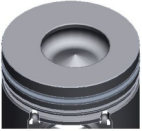
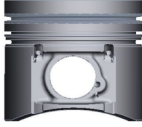
F4 L 1011
4 Sil. Dizel 2732cc 42
Kw (57 PS)
1988...



Piston Ölçüleri
(Piston Dimensions)

A : 55.200
B- : 18.000
BØ : 45.000
BX : 3.000
BY : 1.500
D : 86.150
E : 12.100

Pim : 30 x 68



Piston Özellikleri
(Piston Features)

Segman Taşıyıcı
(Ring Carrier)
Gözarası Düz
(Flat Eye Gap)



Piston Parça No
(Piston Part No)

87-862100-22
87-71310-STDB
87-862107-02
87-71310-050B
87-862111-22
87-71310-100B



Segman Seti
(Ring Set)

06-862100-80-STD
06-862107-80-0,50 mm
3.000 CK KV1
2.000 STD
3.000 CR STD



Silindir Gömleği
(Liner)

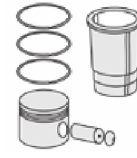
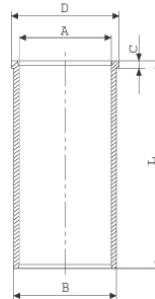
14-021040-00-D
B : 94.100
L : 175.500
D : 99.000
C : 5.000



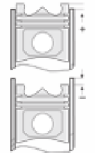
14-021041-00-D
B : 94.600
L : 175.500
D : 99.500
C : 5.500

Dış Çap 0,50mm Farklı
(Outside Diameter
0.50mm Different)

14-029750-00-DH
B : 94.010
L : 175.500
D : 98.900
C : 4.550



Silindir Kit
(Assembly Set)



Piston - Blok Montaj
Yüksekliği
(Piston - Block
Assembly Height)

+ 0,59 / +0,69
+0,69 / +0,76
+0,76 / +0,83





KHD - Ø 92

06-862400-00-STD

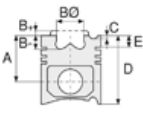


Motor Özellikleri
(Engine Specifications)

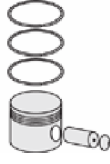
İmalatçı (Manufacturer):
KHD
Çap (Diameter): Ø 92
FM Grup No: 4504

F1 L 411
1 Sil. Dizel

F2 L 411
2 Sil. Dizel



Piston Ölçüleri
(Piston Dimensions)



Piston Parça No
(Piston Part No)



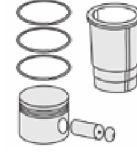
Segman Seti
(Ring Set)

06-862400-00-STD

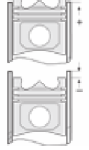
2.500  CR KV1
2.500  STD
2.500  STD
5.000  CR STD



Silindir Gömleği
(Liner)



Silindir Kit
(Assembly Set)



Piston - Blok Montaj
Yüksekliği
(Piston - Block
Assembly Height)





KHD - Ø 94

06-252800-20-STD

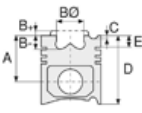


Motor Özellikleri
(Engine Specifications)

İmalatçı (Manufacturer):
KHD
Çap (Diameter): Ø 94
FM Grup No: 4505

BF4 M 1012
4 Sil. Dizel 3192cc 45/84
Kw (61/114 PS) Turbo
1993...

BF6 M 1012
6 Sil. Dizel 4786cc 93/125
Kw (133/170 PS) Turbo
1993...



Piston Ölçüleri
(Piston Dimensions)



Piston Parça No
(Piston Part No)

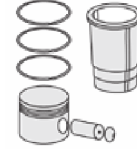


Segman Seti
(Ring Set)

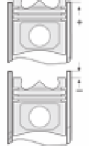
06-252800-20-STD
3.000  CR KV1
2.000  STD
3.000  CR STD
Goetze® LKZ-Ring®



Silindir Gömleği
(Liner)



Silindir Kit
(Assembly Set)



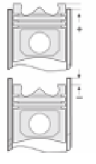
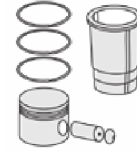
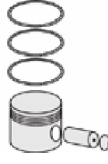
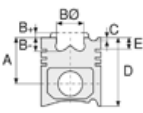
Piston - Blok Montaj
Yüksekliği
(Piston - Block
Assembly Height)





KHD - Ø 94

87-71315-STDB



Motor Özellikleri
(Engine Specifications)

İmalatçı (Manufacturer):
KHD
Çap (Diameter): Ø 94
FM Grup No: 4528

BF4 M 1012
4 Sil. Dizel 3192cc 45/84
Kw (61/114 PS) Turbo
ASKAM AS250 DW,
OTOKAR SULTAN 115
MIDIBUS, SULTAN 115
2000...

Piston Ölçüleri
(Piston Dimensions)

A : 61.200
B- : 18.360
BØ : 49.650
BX : 3.200
BY : 1.900
D : 98.000
E : 9.600

Pim : 34 x 78



Piston Özellikleri
(Piston Features)

Segman Taşıyıcı
(Ring Carrier)
Gözarası Konik
(Conical Eye Gap)

Piston Parça No
(Piston Part No)

87-870600-12
87-71315-STDB
87-870607-12
87-71315-050B

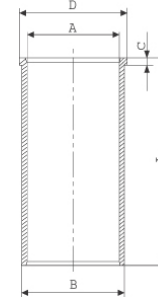
Segman Seti
(Ring Set)

06-870600-20-STD
06-870607-20-0,50 mm
3.000 CK KV1
2.000 F14
3.000 CR STD

Goetze® LKZ-Ring®
Yağ Segmanı Matkap Delik
(Oil Ring Drill Hole)

Silindir Gömleği
(Liner)

14-020490-00-DH
B : 98.500
L : 196.000
D : 102.600
C : 5.000



14-021870-00-D
B : 98.600
L : 196.000
D : 102.600
C : 5.100

Silindir Kit
(Assembly Set)

Piston - Blok Montaj
Yüksekliği
(Piston - Block
Assembly Height)

+ 0,43 / + 0,64
+ 0,64 / + 0,74
+ 0,74 / + 0,84





KHD - Ø 94

87-71316-STD A



Motor Özellikleri
(Engine Specifications)

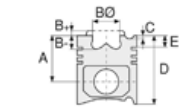
İmalatçı (Manufacturer):
KHD
Çap (Diameter): Ø 94
FM Grup No: 450107

BF 3 M 2011 Euro2
3 Sil. Dizel 2330cc 48,5
Kw(66 Ps) 17,5:1 Turbo
ENDÜSTRİYEL (Industrial)
2004...

BF 4 M 2011 Euro2
4 Sil. Dizel 3110cc 65
Kw(88 Ps) 17,5:1 Turbo
ENDÜSTRİYEL (Industrial)
2004...

BF 3 L 2011 Euro2
3 Sil. Dizel 2330cc 45
Kw(61 Ps) 17,5:1 Turbo
ENDÜSTRİYEL (Industrial)
2004...

BF 4 L 2011 Euro2
4 Sil. Dizel 3110cc 58
Kw(79 Ps) 17,5:1 Turbo
ENDÜSTRİYEL (Industrial)
2004...



Piston Ölçüleri
(Piston Dimensions)

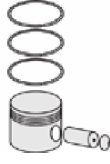
A : 51.700
B - : 17.600
BØ : 52.000
BX : 1.000
BY : 1.000
D : 81.650
E : 9.100

Pim : 30 x 68



Piston Özellikleri
(Piston Features)

Segman Taşıyıcı
(Ring Carrier)
Soğutma Kanallı
(Cooling Gallery)
Gözarası Düz
(Flat Eye Gap)



Piston Parça No
(Piston Part No)

87-870600-32
87-71316-STD A
87-870607-32
87-71316-050A



Segman Seti
(Ring Set)

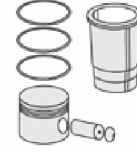
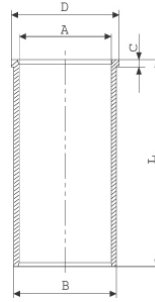
06-870600-20-STD
06-870607-20-0,50 mm
3.000 CK KV1
2.000 F14
3.000 CR STD

Goetze® LKZ-Ring®
Yağ Segmanı Matkap Delik
(Oil Ring Drill Hole)

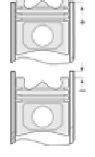


Silindir Gömleği
(Liner)

14-021750-00-D
B : 97.000
L : 175.000
D : 98.500
C : 5.000



Silindir Kit
(Assembly Set)



Piston - Blok Montaj
Yüksekliği
(Piston - Block
Assembly Height)

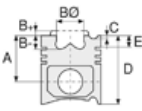
1 Kertik Conta İle
(With Notch Gasket)
0,51/0,69
2 Kertik Conta İle
(With Notch Gasket)
0,70 /0,76
3 Kertil Conta İle
(With Notch Gasket)
0,77/083





KHD - Ø 94

87-71317-STD A



Motor Özellikleri
(Engine Specifications)

Piston Ölçüleri
(Piston Dimensions)

Piston Parça No
(Piston Part No)

Segman Seti
(Ring Set)

Silindir Gömleği
(Liner)

Silindir Kit
(Assembly Set)

Piston - Blok Montaj
Yüksekliği
(Piston - Block
Assembly Height)

İmalatçı (Manufacturer):
KHD
Çap (Diameter): Ø 94
FM Grup No: 450101

A : 51.700
B - : 19.000
BØ : 46.000
BX : 2.000
BY : 0.800
D : 81.650
E : 16.000

87-146500-12
87-71317-STD A
87-146507-12
87-71317-050A

06-146500-20-STD
06-146507-20-0,50 mm
2.000 CR KV1
2.000 F14
3.000 F14
Goetze® LKZ-Ring®

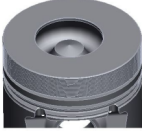
14-021750-00-D
B : 97.000
L : 175.000
D : 98.500
C : 5.000

F 2 M 2011 Euro2
2 Sil. Dizel 1550cc 24
Kw(33 Hp) 19:1
ENDÜSTRİYEL (Industrial)
2004...

Pim : 26 x 65



F 3 M 2011 Euro2
3 Sil. Dizel 2330cc 36,5
Kw(50 Ps) 19:1
ENDÜSTRİYEL (Industrial)
2004...



F 4 M 2011 Euro2
4 Sil. Dizel 3110cc 48,5
Kw(66 Ps) 19:1
ENDÜSTRİYEL (Industrial)
2004...

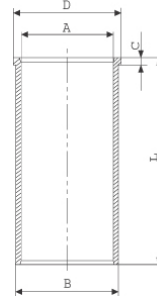
Piston Özellikleri
(Piston Features)

Gözarası Düz
(Flat Eye Gap)

F 2 L 2011 Euro2
2 Sil. Dizel 1550cc 23
Kw(32 Ps) 19:1
ENDÜSTRİYEL (Industrial)
2004...

F 3 L 2011 Euro2
3 Sil. Dizel 2330cc 36
Kw(49 Ps) 19:1
ENDÜSTRİYEL (Industrial)
2004....

F 4 L 2011 Euro2
4 Sil. Dizel 3110cc 48
Kw(65 Ps) 19:1
ENDÜSTRİYEL (Industrial)
2004...





KHD - Ø 95

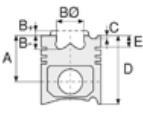
06-741000-20-STD



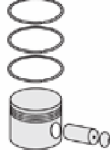
Motor Özellikleri
(Engine Specifications)

İmalatçı (Manufacturer):
KHD
Çap (Diameter): Ø 95
FM Grup No: 4506

F1 L 210
1 Sil. Dizel



Piston Ölçüleri
(Piston Dimensions)



Piston Parça No
(Piston Part No)



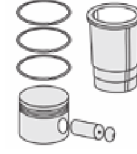
Segman Seti
(Ring Set)

06-741000-20-STD

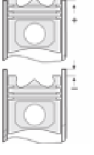
2.500 CR STD
2.550 STD
5.000 STD



Silindir Gömleği
(Liner)



Silindir Kit
(Assembly Set)



Piston - Blok Montaj
Yüksekliği
(Piston - Block
Assembly Height)





KHD - Ø 96

87-71313-STD



Motor Özellikleri
(Engine Specifications)

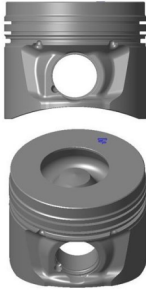
İmalatçı (Manufacturer):
KHD
Çap (Diameter): Ø 96
FM Grup No: 45993

TCD 2011
6 Sil. Dizel ENDÜSTRİYEL
(Industrial),
İŞ MAKİNASI
(Working Machine)

Piston Ölçüleri
(Piston Dimensions)

A : 51.700
B- : 20.600
BØ : 48.000
D : 81.700
E : 13.600

Pim : 30 x 68



Piston Özellikleri
(Piston Features)



Piston Parça No
(Piston Part No)

87-870900-02
87-71313-STD
87-870907-02
87-71313-0,50



Segman Seti
(Ring Set)

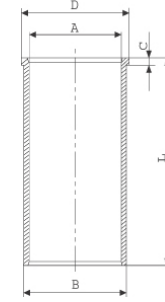
06-870900-00-STD
06-870907-00-0,50

2.000 CKS KV1
2.000 P F14
3.000 CR GOE



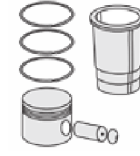
Silindir Gömleği
(Liner)

14-022450-00-D
B : 99.000
L : 177.000
D : 101.000
C : 5.000

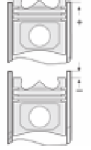


14-022451-00-D
B : 99.500
L : 177.000
D : 101.500
C : 5.500

Dış Çap 0,50mm Farklı
(Outside Diameter
0.50mm Different)



Silindir Kit
(Assembly Set)



Piston - Blok Montaj
Yüksekliği
(Piston - Block
Assembly Height)





KHD - Ø 96

87-71314-STD



Motor Özellikleri
(Engine Specifications)

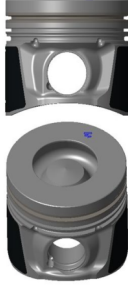
İmalatçı (Manufacturer):
KHD
Çap (Diameter): Ø 96
FM Grup No: 45992

TCD 2011
4 Sil. Dizel 23-74
KW-31-100 HP
ENDÜSTRİYEL (Industrial),
İŞ MAKİNASI
(Working Machine)

Piston Ölçüleri
(Piston Dimensions)

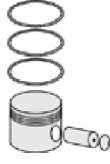
A : 51.700
B- : 19.400
BØ : 52.000
D : 81.600
E : 11.100

Pim : 30 x 68



Piston Özellikleri
(Piston Features)

Segman Taşıyıcı
(Ring Carrier)



Piston Parça No
(Piston Part No)

87-863100-02
87-71314-STD
87-863107-02
87-71314-0,50



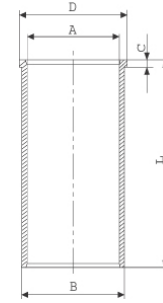
Segman Seti
(Ring Set)

06-863100-00-STD
06-863107-00-0,50
3.000 CKS KV1
2.000 P F14
3.000 CR GOE



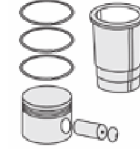
Silindir Gömleği
(Liner)

14-022450-00-D
B : 99.000
L : 177.000
D : 101.000
C : 5.000

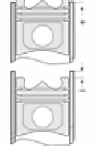


14-022451-00-D
B : 99.500
L : 177.000
D : 101.500
C : 5.500

Dış Çap 0,50mm Farklı
(Outside Diameter
0.50mm Different)



Silindir Kit
(Assembly Set)



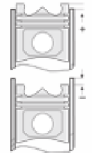
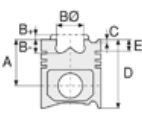
Piston - Blok Montaj
Yüksekliği
(Piston - Block
Assembly Height)





KHD - Ø 98

87-73119-STD



Motor Özellikleri
(Engine Specifications)

İmalatçı (Manufacturer):
KHD
Çap (Diameter): Ø 98
FM Grup No: 450126

TCD 3.6
4 Sil. Dizel 3621cc
100 KW-136 PS 18,0;1

ENDUSTRIYEL,
İŞ MAKİNASI, Tractor

Piston Ölçüleri
(Piston Dimensions)

A : 57.900
B- : 17.250
BØ : 61.450
BX : 3.000
BY : 2.100
C1 : 1.200
C2 : 1.100
D : 88.000
E : 15.100

Pim : 34 x 79



Piston Özellikleri
(Piston Features)

Segman Taşıyıcı
(Ring Carrier)
Gözarası Konik
(Conical Eye Gap)

Piston Parça No
(Piston Part No)

87-127800-42
87-71319-STD

Segman Seti
(Ring Set)

06-127800-20 STD
3.000 CKS KV1
2.030 F14
3.000 CR GOE

Silindir Gömleği
(Liner)

Silindir Kit
(Assembly Set)

Piston - Blok Montaj
Yüksekliği
(Piston - Block
Assembly Height)





KHD-VOLVO - Ø 98

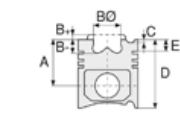
87-73647-STD



Motor Özellikleri
(Engine Specifications)

İmalatçı (Manufacturer):
KHD-VOLVO
Çap (Diameter): Ø 98
FM Grup No: 880166

D6EBE3
6 Sil. Dizel 97,7 KW-131 HP
EKSKAVATÖR (Excavator)



Piston Ölçüleri
(Piston Dimensions)

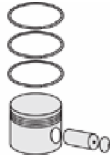
A : 55.100
B- : 17.250
BØ : 61.450
BX : 3.000
BY : 2.000
D : 90.600
E : 13.100

Pim : 40 x 80



Piston Özellikleri
(Piston Features)

Segman Taşıyıcı
(Ring Carrier)
Yağ Püskürtme Oyuğu
(Oil Jet Cut-Out)
Gözarası Konik
(Conical Eye Gap)



Piston Parça No
(Piston Part No)

87-127800-02
87-73647-STD



Segman Seti
(Ring Set)

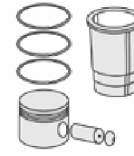
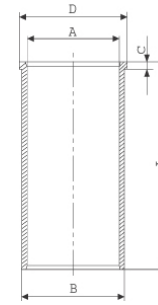
06-127800-20-STD

3.000 CKS KV1
2.030 F14
3.000 CR GOE



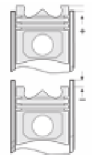
Silindir Gömleği
(Liner)

14-022160-00-DH
B : 101.000
L : 188.000
D : 105.000
C : 4.500



Silindir Kit
(Assembly Set)

88-127800-02-STD
88-73647-STD



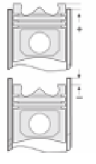
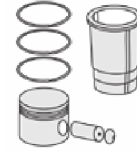
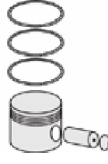
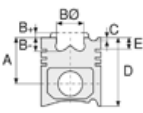
Piston - Blok Montaj
Yüksekliği
(Piston - Block
Assembly Height)





KHD - Ø 100

87-71325-STDA



Motor Özellikleri
(Engine Specifications)

İmalatçı (Manufacturer):
KHD
Çap (Diameter): Ø 100
FM Grup No: 4509

F1 L 511 D
1 Sil. Dizel 825cc 13
Kw (17,5 PS) 1978 - 1992

F2 L 511 D
2 Sil. Dizel 1560cc 26
Kw (35 PS)
1978 - 1992

Piston Ölçüleri
(Piston Dimensions)

A : 56.750
B- : 15.740
B : 5.700
BØ : 50.000
BX : 7.000
C1 : 2.350
D : 90.250
E : 14.600

Pim : 35 x 75



Piston Özellikleri
(Piston Features)

Çelik Plaka
(Steel Strut)
Gözarası Düz
(Flat Eye Gap)

Piston Parça No
(Piston Part No)

87-741800-12
87-71325-STDA
87-741807-12
87-71325-050A
87-741811-12
87-71325-100A

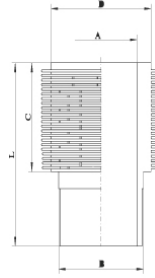
Segman Seti
(Ring Set)

06-741800-20-STD
06-741807-20-0,50 mm
06-741811-20-1,00 mm

2.940 CR IKA
2.550 STD
5.000 CR STD

Silindir Gömleği
(Liner)

14-900040-00-WH
B : 109.400
L : 185.700
D : 119.800
C : 118.900



Silindir Kit
(Assembly Set)

88-741800-12-STD
88-71325-STDA

Piston - Blok Montaj
Yüksekliği
(Piston - Block
Assembly Height)

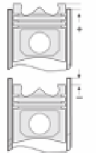
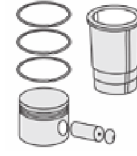
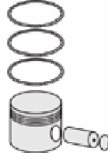
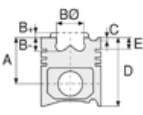
+1,02 / +1,20





KHD - Ø 100

87-71333-STD



Motor Özellikleri
(Engine Specifications)

Piston Ölçüleri
(Piston Dimensions)

Piston Parça No
(Piston Part No)

Segman Seti
(Ring Set)

Silindir Gömleği
(Liner)

Silindir Kit
(Assembly Set)

Piston - Blok Montaj
Yüksekliği
(Piston - Block
Assembly Height)

İmalatçı (Manufacturer):
KHD
Çap (Diameter): Ø 100
FM Grup No: 4510

A : 71.900
B - : 21.400
B : 5.700
BØ : 55.000
BX : 5.000
C1 : 1.100
D : 123.600
E : 18.000

87-744600-02
87-71333-STD
87-744607-02
87-71333-050
87-744611-02
87-71333-100

06-744600-20-STD
06-744607-20-0,50 mm
06-744611-20-1,00 mm

2.940 CR KV1
2.000 STD
3.500 CR STD

Goetze® LKZ-Ring®

+1,00 / +1,20

F2 L 912 D
2 Sil. Dizel 1884cc 26,5/28
Kw (36/38 PS) 17:1
TRACTOR D2506,
TRACTOR D2807,
TRACTOR D3006,
TRACTOR D3607,
TRACTOR Dx36
1967 - 1972

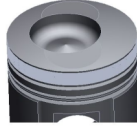
Pim : 35 x 80



F3 L 912 D
3 Sil. Dizel 2826cc 26/43
Kw (35/58,5 PS) 17:1
TRACTOR D4006,
TRACTOR D4007,
TRACTOR D4505,
TRACTOR D4506,
TRACTOR D4507,
TRACTOR D4807,
TRACTOR D5006,
TRACTOR D5206,
TRACTOR D5207,
TRACTOR DX3.10,
TRACTOR DX3.20,
TRACTOR DX3.30,
TRACTOR DX50,
TRACTOR Dx55
1967 - 1972

Piston Özellikleri
(Piston Features)

Yağ Püskürtme Oyuğu
(Oil Jet Cut-Out)
Gözarası Düz
(Flat Eye Gap)



F4 L 912 D
4 Sil. Dizel 3768cc 43/59
Kw (58,5/80 PS) 17:1
TRACTOR D4006,
TRACTOR D5006,
TRACTOR D5506,
TRACTOR D6006,
TRACTOR D6206,
TRACTOR D6207,
TRACTOR D6507,
TRACTOR D6806,





KHD - Ø 100

87-71333-STD



Motor Özellikleri
(Engine Specifications)

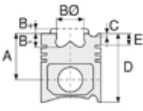
TRACTOR D6807,
TRACTOR D7006,
TRACTOR D7007,
TRACTOR D7206,
TRACTOR D7207,
TRACTOR DX3.70,
TRACTOR DX4.10
1967 - 1972

F5 L 912 D

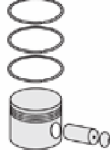
5 Sil. Dizel 4712cc 63/74
Kw (85/100 PS) 17:1
TRACTOR DX85,
TRACTOR Dx90
1967 - 1972

F6 L 912 D

6 Sil. Dizel 5652cc 59/82
Kw (80/112 PS) 17:1
D10006, D7506, D8006,
D9006, D9009, DX110,
DX6.10, TRACTOR 120D
1967 - 1972



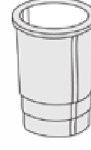
Piston Ölçüleri
(Piston Dimensions)



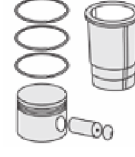
Piston Parça No
(Piston Part No)



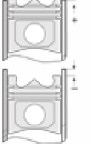
Segman Seti
(Ring Set)



Silindir Gömleği
(Liner)



Silindir Kit
(Assembly Set)



Piston - Blok Montaj
Yüksekliği
(Piston - Block
Assembly Height)





KHD - Ø 101

87-71305-STD



Motor Özellikleri
(Engine Specifications)

İmalatçı (Manufacturer):
KHD

Çap (Diameter): Ø 101
FM Grup No: 450115

2012TCD L4L6 2V
EURO 3

4 Sil. Dizel 4038cc 83
KW-113 PS 18:1
AR95, Aw1110, Aw1120PD,
Aw1130PP, Aw1140
2004...

Piston Ölçüleri
(Piston Dimensions)

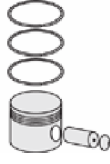
A : 55.150
B- : 18.120
BØ : 62.000
BX : 3.100
BY : 2.000
D : 90.650
E : 13.300

Pim : 40 x 80



Piston Özellikleri
(Piston Features)

Segman Taşıyıcı
(Ring Carrier)
Soğutma Kanallı
(Cooling Gallery)
Yağ Püskürtme Oyuğu
(Oil Jet Cut-Out)
Burçlu Piston
(Bushing Piston)
Gözarası Konik
(Conical Eye Gap)



Piston Parça No
(Piston Part No)

87-127900-22
87-71305-STD

87-127907-22
87-71305-0,50



Segman Seti
(Ring Set)

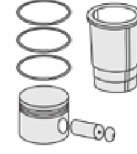
06-127900-20-STD
06-127907-20-0,50 mm

2.500 CK KV1
2.000 F14
3.000 CR GOE

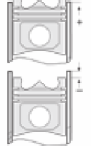
Goetze® LKZ-Ring®



Silindir Gömleği
(Liner)



Silindir Kit
(Assembly Set)



Piston - Blok Montaj
Yüksekliği
(Piston - Block
Assembly Height)

1 Kertik Conta İle
(With Notch Gasket)
0,33 / 0,55

2 Kertik Conta İle
(With Notch Gasket)
0,56 / 0,65

3 Kertik Conta İle
(With Notch Gasket)
0,66 / 0,76





KHD - Ø 101

87-71326-STD A



Motor Özellikleri
(Engine Specifications)

İmalatçı (Manufacturer):
KHD
Çap (Diameter): Ø 101
FM Grup No: 4596

BF4M2012 Euro 2
4 Sil. Dizel 4038cc 74,9
Kw 19:1 MF 3075 - MF 3085
ENDÜSTRİYEL (Industrial)
2001...

BF6M2012C Euro 2
6 Sil. Dizel 6057cc 133-155
Kw 19:1 OTOKAR SULTAN
ENDÜSTRİYEL (Industrial)
2000...

BF4M2012C Euro 2
4 Sil. Dizel 4038cc 80
Kw (109 PS) 19:1
Perkins ve Otokar İle Ortak
Motor (With Perkins And
Otokar Common Engine)
ENDÜSTRİYEL (Industrial)
2000...

Piston Ölçüleri
(Piston Dimensions)

A : 50.650
B- : 18.000
BØ : 61.030
BX : 3.000
BY : 2.000
D : 86.150
E : 11.550

Pim : 38 x 76



Piston Özellikleri
(Piston Features)

Segman Taşıyıcı
(Ring Carrier)
Yağ Püskürtme Oyuğu
(Oil Jet Cut-Out)
Gözarası Konik
(Conical Eye Gap)

Piston Parça No
(Piston Part No)

87-127900-12
87-71326-STD A
87-127907-12
87-71326-0,50



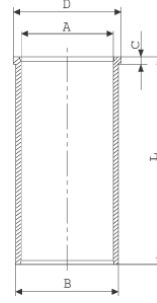
Segman Seti
(Ring Set)

06-127900-20-STD
06-127907-20-0,50 mm
2.500 CK KV1
2.000 F14
3.000 CR GOE
Goetze® LKZ-Ring®



Silindir Gömleği
(Liner)

14-021990-00-D
B : 104.000
L : 188.000
D : 106.000
C : 5.000



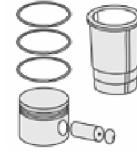
14-021991-00-D
B : 104.500
L : 188.000
D : 106.500
C : 5.500

Dış Çap 0,50mm Farklı
(Outside Diameter
0,50mm Different)

14-021992-00-D
B : 108.000
L : 188.000
D : 107.000
C : 6.000

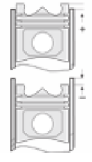
Dış Çap 1,00mm Farklı
(Outside Diameter
1,00mm Different)

Silindir Kit
(Assembly Set)



Piston - Blok Montaj
Yüksekliği
(Piston - Block
Assembly Height)

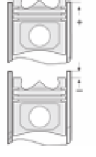
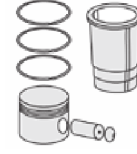
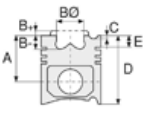
+0,33 / +0,55
+0,56 / +0,65
+0,66 / +0,75





KHD - Ø 102

87-71311-STD



Motor Özellikleri
(Engine Specifications)

Piston Ölçüleri
(Piston Dimensions)

Piston Parça No
(Piston Part No)

Segman Seti
(Ring Set)

Silindir Gömleği
(Liner)

Silindir Kit
(Assembly Set)

Piston - Blok Montaj
Yüksekliği
(Piston - Block
Assembly Height)




İmalatçı (Manufacturer):
KHD
Çap (Diameter): Ø 102
FM Grup No: 450120

A : 65.600
B - : 10.900
B : 6.000
BØ : 70.100
BX : 5.000
C1 : 1.510
D : 117.100
E : 15.350

87-870800-22
87-71311-STD

87-870807-22
87-71311-0,50

06-870800-80-STD
06-870807-80-0,50 mm

2.940  CK KV1
3.000  CR KV1
3.000  CR GOE

Pim : 35 x 80



BF 3L914
3 Sil. Dizel
44-110KW-59-150PS
Sabit Motor (Fixed Engine)
2002...

BF 4L 914
4 Sil. Dizel
44-110KW-59-150PS
Sabit Motor (Fixed Engine)
2002...

BF 6L 914
6 Sil. Dizel
44-110KW-59-150PS
Sabit Motor (Fixed Engine)
2002...

Piston Özellikleri
(Piston Features)

Segman Taşıyıcı
(Ring Carrier)
Soğutma Kanallı
(Cooling Gallery)
Yağ Püskürtme Oyuğu
(Oil Jet Cut-Out)
Gözarası Düz
(Flat Eye Gap)





KHD - Ø 102

06-252600-80-STD



Motor Özellikleri
(Engine Specifications)

İmalatçı (Manufacturer):
KHD

Çap (Diameter): Ø 102
FM Grup No: 4581

BF4L913 / BFL913C

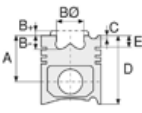
4 Sil. Dizel 4086cc
47-81 Kw (64-110 PS)
Turbo
1973...

BF6L913

6 Sil. Dizel 6182cc 51-147
Kw(69-200 PS) Turbo
1973...

BF6L913C

6 Sil. Dizel 6128cc 131
Kw (178 PS) 15.5:1
Turbo intercool
ENDÜSTRİYEL (Industrial)
1980...



Piston Ölçüleri
(Piston Dimensions)






Piston Parça No
(Piston Part No)



Segman Seti
(Ring Set)

06-252600-80-STD
06-252607-80-0,50 mm

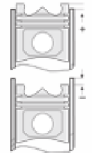
2.940  CK KV1
3.000  IKA
3.500  CR STD



Silindir Gömleği
(Liner)



Silindir Kit
(Assembly Set)



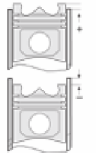
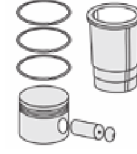
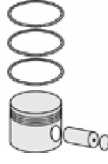
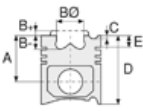
Piston - Blok Montaj
Yüksekliği
(Piston - Block
Assembly Height)





KHD - Ø 102

87-71306-STD



Motor Özellikleri
(Engine Specifications)

Piston Ölçüleri
(Piston Dimensions)

Piston Parça No
(Piston Part No)

Segman Seti
(Ring Set)

Silindir Gömleği
(Liner)

Silindir Kit
(Assembly Set)

Piston - Blok Montaj
Yüksekliği
(Piston - Block
Assembly Height)

İmalatçı (Manufacturer):
KHD
Çap (Diameter): Ø 102
FM Grup No: 450116

A : 65.600
B - : 13.450
B : 3.350
BØ : 56.500
BX : 6.000
C1 : 1.510
D : 114.450
E : 15.350

87-135000-02
87-71306-STD

87-135007-02
87-71306-0,50

06-135000-80-STD
06-135007-80-0,50 mm

2.940 CK KV1
2.000 F14
3.000 CR GOE

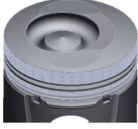
F 3L 914
3 Sil. Dizel 41-89
KW-56-121PS Agropplus
1997...

Pim : 35 x 80

F 4L 914
4 Sil. Dizel 41-89
KW-56-121PS
Sabit Motor (Fixed Engine)
1997...



F 5L 914
5 Sil. Dizel 41-89
KW-56-121PS
Sabit Motor (Fixed Engine)
1997...



Piston Özellikleri
(Piston Features)

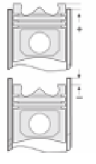
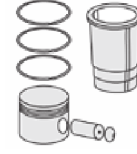
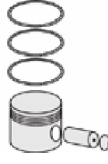
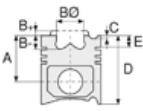
Soğutma Kanallı
(Cooling Gallery)
Yağ Püskürtme Oyuğu
(Oil Jet Cut-Out)
Gözarası Düz
(Flat Eye Gap)





KHD - Ø 102

87-71307-STD



Motor Özellikleri
(Engine Specifications)

Piston Ölçüleri
(Piston Dimensions)

Piston Parça No
(Piston Part No)

Segman Seti
(Ring Set)

Silindir Gömleği
(Liner)

Silindir Kit
(Assembly Set)

Piston - Blok Montaj
Yüksekliği
(Piston - Block
Assembly Height)




İmalatçı (Manufacturer):
KHD
Çap (Diameter): Ø 102
FM Grup No: 450119

A : 65.600
B - : 11.000
B : 6.000
BØ : 65.150
BX : 6.600
C1 : 1.510
D : 117.100
E : 15.350
Pim : 40 x 80

87-870800-02
87-71307-STD

87-870807-02
87-71307-0,50

06-870800-80-STD
06-870807-80-0,50 mm

2.940  CK KV1
3.000  CR KV1
3.000  CR GOE

BF 6L 914C
6 Sil. Dizel 141KW-192PS
Sabit Motor (Fixed Engine)
2003...



Piston Özellikleri
(Piston Features)

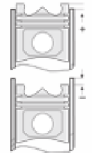
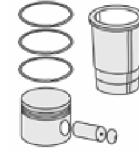
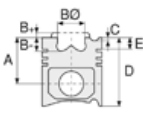
Segman Taşıyıcı
(Ring Carrier)
Soğutma Kanallı
(Cooling Gallery)
Yağ Püskürtme Oyuğu
(Oil Jet Cut-Out)
Gözarası Düz
(Flat Eye Gap)





KHD - Ø 102

87-71327-STD A



Motor Özellikleri
(Engine Specifications)

Piston Ölçüleri
(Piston Dimensions)

Piston Parça No
(Piston Part No)

Segman Seti
(Ring Set)

Silindir Gömleği
(Liner)

Silindir Kit
(Assembly Set)

Piston - Blok Montaj
Yüksekliği
(Piston - Block
Assembly Height)

İmalatçı (Manufacturer):
KHD
Çap (Diameter): Ø 102
FM Grup No: 4515




A : 69.100
B - : 16.600
B : 6.000
BØ : 58.000
BX : 2.000
D : 123.600
E : 15.600

87-252600-12
87-71327-STD A

87-252607-12
87-71327-050 A

87-252300-32
87-71327-STD B

06-252600-80-STD
06-252607-80-0,50 mm

2.940  CK KV1
3.000  IKA
3.500  CR STD

14-900060-00-WH
B : 109.800
L : 220.400
D : 124.500
C : 135.400

88-252600-12-STD
88-71327-STD A

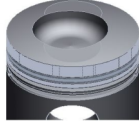
+1,00 / +1,20

BF6 L 913, BF6 L 913 C
6 Sil. Dizel 6129cc 107/117,5
Kw (146/160 PS) 15, 5:1
Turbo
1982...

Pim : 40 x 80

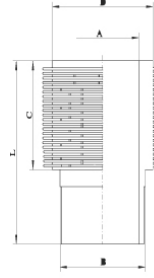


BF6 L 913, BF6 L 913 C
6 Sil. Dizel 6129cc 131
Kw (178 PS) 15, 5:1
Turbo Intercooled
13006 A, M 160 L 81,
M 160 M 13 FL,
M 168 M 8 FLL,
M 30 M 8 FL
1982...

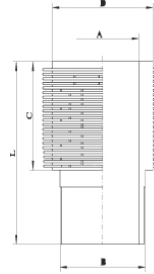


Piston Özellikleri
(Piston Features)

Segman Taşıyıcı
(Ring Carrier)
Soğutma Kanallı
(Cooling Gallery)
Gözarası Düz
(Flat Eye Gap)



14-900100-00-WH
B : 109.500
L : 222.300
D : 120.000
C : 137.300



88-252300-32-STD
88-71327-STD B

87-861800-32
87-71332-STD B

06-861800-80-STD
06-861807-80-0,50 mm
06-861811-80-1,00 mm

14-900060-00 WH

88-861800-32-STD
88-71332-STD B

87-861807-32
87-71332-050 B

3.000  CK KV1
3.000  CR IKA
5.000  CR STD

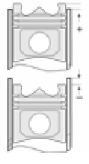
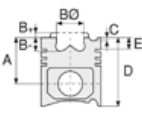
87-861811-32
87-71332-100 B





KHD - Ø 102

87-71329-STD A



Motor Özellikleri
(Engine Specifications)

İmalatçı (Manufacturer):
KHD
Çap (Diameter): Ø 102
FM Grup No: 4532

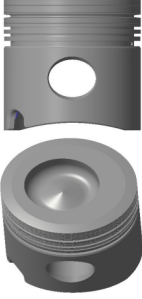
BF4 L 913T
4 Sil. Dizel 4086cc 64
Kw (87 PS) 15:1 Turbo
1979 - 1996

BF6 L 913T
4 Sil. Dizel 6128cc 95,5
Kw (130 PS) 15, 5:1 Turbo
1979 - 1996

Piston Ölçüleri
(Piston Dimensions)

A : 69.100
B- : 19.500
BØ : 56.000
BX : 5.000
D : 123.600
E : 15.600

Pim : 35 x 80



Piston Özellikleri
(Piston Features)

Segman Taşıyıcı
(Ring Carrier)
Soğutma Kanallı
(Cooling Gallery)
Yağ Püskürtme Oyuğu
(Oil Jet Cut-Out)
Gözarası Düz
(Flat Eye Gap)

Piston Parça No
(Piston Part No)

87-174600-42
87-71329-STD A
87-174607-42
87-71329-050A
87-174611-42
87-71329-100A

Segman Seti
(Ring Set)

06-174600-80-STD
06-174607-80-0,50 mm
06-174611-80-1,00 mm
3.000 CK KV1
2.500 STD
2.500 STD
5.000 CR STD
Goetze® LKZ-Ring®

Silindir Gömleği
(Liner)

Silindir Kit
(Assembly Set)

Piston - Blok Montaj
Yüksekliği
(Piston - Block
Assembly Height)





KHD - Ø 102

87-71330-STDB



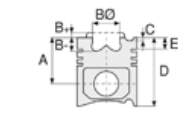
Motor Özellikleri
(Engine Specifications)

İmalatçı (Manufacturer):
KHD
Çap (Diameter): Ø 102
FM Grup No: 4513

BF4 L 913
4 Sil. Dizel 4086cc 64
Kw (87 PS) 18:1
1974...

BF6 L 913
6 Sil. Dizel 6128cc 145/160
PS 15, 5:1 Turbocharge
1974...

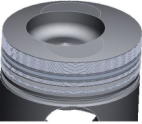
BF6 L 913
6 Sil. Dizel 6128cc 133
Kw (178 PS) 15, 5:1
Turbo Intercooled
160 M 13 FL, 168 M 8 FLL,
M 160 L 81, M 30, M 8 FL,
TRACTOR 13006 A
1973...



Piston Ölçüleri
(Piston Dimensions)

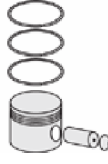
A : 69.100
B - : 16.600
B : 6.000
BØ : 58.000
BX : 5.000
D : 123.600
E : 15.600

Pim : 30 x 68



Piston Özellikleri
(Piston Features)

Segman Taşıyıcı
(Ring Carrier)
Soğutma Kanallı
(Cooling Gallery)
Yağ Püskürtme Oyuğu
(Oil Jet Cut-Out)
Gözarası Düz
(Flat Eye Gap)



Piston Parça No
(Piston Part No)

87-178400-32
87-71330-STDB
87-178407-32
87-71330-050B



Segman Seti
(Ring Set)

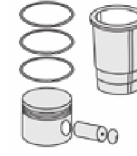
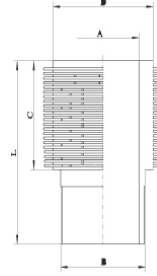
06-178400-80-STD
06-178407-80-0,50 mm
06-178411-80-1,00 mm

3.000 CK KV1
3.000 CR IKA
2.500 STD
5.000 CR STD



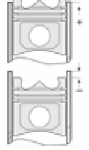
Silindir Gömleği
(Liner)

14-900100-00-WH
B : 109.500
L : 222.300
D : 120.000
C : 137.300



Silindir Kit
(Assembly Set)

88-178400-32-STD
88-71330-STDB



Piston - Blok Montaj
Yüksekliği
(Piston - Block
Assembly Height)

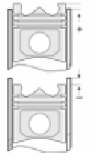
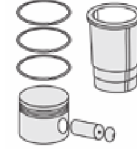
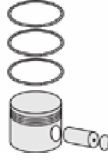
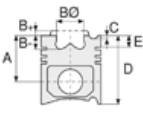
+1,00 / +1,20





KHD - Ø 102

87-71331-STDC



Motor Özellikleri
(Engine Specifications)

İmalatçı (Manufacturer):
KHD
Çap (Diameter): Ø 102
FM Grup No: 4514

F6 L 913 D
6 Sil. Dizel 6128cc 81/96
Kw (110/132 PS) 17:1
D 7807, DX 120, DX 3.50,
DX 3.90, DX 6.30
1981...

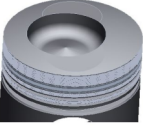
F4 L 913 D
4 Sil. Dizel 4086cc 55
Kw (75 Ps) 1987...

F3 L 913 D
3 Sil. Dizel 3060cc 42-45
KW (57-61 Ps)
1976...

Piston Ölçüleri
(Piston Dimensions)

A : 69.100
B- : 16.600
B : 6.000
BØ : 58.000
BX : 5.000
D : 123.600
E : 15.600

Pim : 35 x 80



Piston Özellikleri
(Piston Features)

Segman Taşıyıcı
(Ring Carrier)
Soğutma Kanallı
(Cooling Gallery)
Yağ Püskürtme Oyuğu
(Oil Jet Cut-Out)
Gözarası Düz
(Flat Eye Gap)

Piston Parça No
(Piston Part No)

87-174600-62
87-71331-STDC
87-174607-62
87-71331-050C
87-174611-62
87-71331-100C

Segman Seti
(Ring Set)

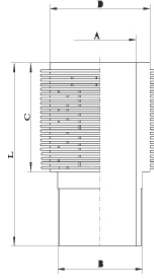
06-174600-80-STD
06-174607-80-0,50 mm
06-174611-80-1,00 mm

3.000 CK KV1
2.500 STD
2.500 STD
5.000 CR STD

Goetze® LKZ-Ring®

Silindir Gömleği
(Liner)

14-900100-00-WH
B : 109.500
L : 222.300
D : 120.000
C : 137.300



Silindir Kit
(Assembly Set)

88-174600-62-STD
88-71331-STDC

Piston - Blok Montaj
Yüksekliği
(Piston - Block
Assembly Height)

+1,00 / +1,20





KHD - IVECO LKW Ø 104

87-70776-STD



Motor Özellikleri
(Engine Specifications)

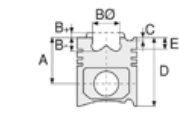
İmalatçı (Manufacturer):
KHD-IVECO LKW
Çap (Diameter): Ø 104
FM Grup No: 4010

8040.05

4 Sil. Dizel 3908cc 59
Kw (80 PS) 17:1 35 NC,
50 NC, M 23LS, M24
1986 - 1992

8045.05.000

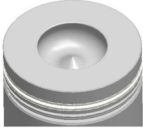
4 Sil. Dizel 3908cc
52/59 Kw (71/80 PS) 17:1
Khd İle Ortak Motor
(With Khd Common
Engine)
KAMYON (Truck) 35.9,
KAMYON (Truck) 65.9
1987...



Piston Ölçüleri
(Piston Dimensions)

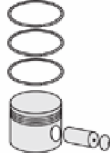
A : 65.150
B- : 22.500
BØ : 52.200
D : 108.500
E : 17.600

Pim : 38 x 85



Piston Özellikleri
(Piston Features)

Segman Taşıyıcı
(Ring Carrier)
Gözarası Konik
(Conical Eye Gap)



Piston Parça No
(Piston Part No)

87-839700-22
87-70776-STD



Segman Seti
(Ring Set)

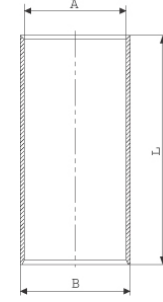
06-839700-10-STD
2.500 CRP KV1
2.500 P IKA
4.000 CRP STD

Goetze® LKZ-Ring®



Silindir Gömleği
(Liner)

14-010940-00-D
B : 107.000
L : 198.000

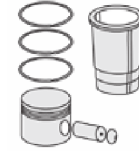


14-010942-00-D
B : 107.500
L : 198.000

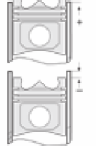
Dış Çap 0,50mm Farklı
(Outside Diameter
0.50mm Different)

14-010943-00-D
B : 108.000
L : 198.000

Dış Çap 1,00mm Farklı
(Outside Diameter
1,00mm Different)



Silindir Kit
(Assembly Set)



Piston - Blok Montaj
Yüksekliği
(Piston - Block
Assembly Height)

+ 0,460 / + 0,790





KHD - Ø 108

87-71485-STD



Motor Özellikleri
(Engine Specifications)

İmalatçı (Manufacturer):
KHD
Çap (Diameter): Ø 108
FM Grup No: 4580

BF6 M 1013 EURO2
6 Sil. Dizel 7146cc 19:1
Turbointercooled
İŞ MAKİNASI
(Working Machine)
1993...

Piston Ölçüleri
(Piston Dimensions)

A : 71.150
B- : 16.600
BØ : 71.000
D : 108.000
E : 8.200

Pim : 42 x 86



Piston Özellikleri
(Piston Features)

Segman Taşıyıcı
(Ring Carrier)
Gözarası Konik
(Conical Eye Gap)



Piston Parça No
(Piston Part No)

87-136900-42
87-71485-STD



Segman Seti
(Ring Set)

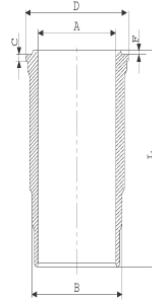
06-136900-00-STD
3.000 CK KV1
2.000 NTP KV1
3.500 CRP STD

Goetze® LKZ-Ring®



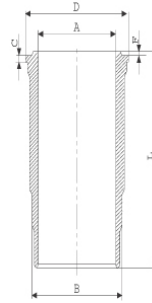
Silindir Gömleği
(Liner)

14-480040-00-WH
B : 118.000
L : 229.100
D : 128.500
C : 9.000
F : 1100



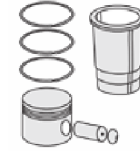
O RİNG BİLGİ
(O Ring Information)
24-35047-30/O
2 X (112*3)
FKM PEROXIDE

14-480720-00-WH
B : 120.000
L : 229.100
D : 128.500
C : 9.000
F : 1100



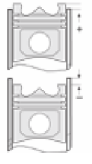
Dış Yüzeyi Fosfat Kaplı
(Outer Surface
Phosphate Coated)

14-480720-00-WH
Dış Yüzeyi Fosfat Kaplı
(Outer Surface
Phosphate Coated)



Silindir Kit
(Assembly Set)

88-136900-42-STD
88-71485-STD



Piston - Blok Montaj
Yüksekliği
(Piston - Block
Assembly Height)

- 1.Çentik Conta İle
(With Notch Gasket)
+0,28 / +0,53
- 2.Çentik Conta İle
(With Notch Gasket)
+0,54 / +0,63
- 3.Çentik Conta İle
(With Notch Gasket)
+0,64 / +0,75



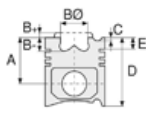


KHD - Ø 108

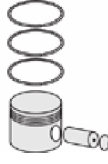
87-71485-STD



Motor Özellikleri
(Engine Specifications)



Piston Ölçüleri
(Piston Dimensions)



Piston Parça No
(Piston Part No)

87-123800-02
87-71485-STD



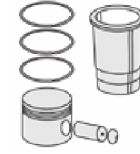
Segman Seti
(Ring Set)

06-123800-20-STD
3.000 CR KV1
2.000 NTP KV1
3.500 CRP STD
Goetze® LKZ-Ring®



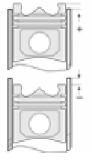
Silindir Gömleği
(Liner)

14-480040-00-WH
O RİNG BİLGİ
(O Ring Information)
24-35047-30/O
2 X (112*3)
FKM PEROXIDE



Silindir Kit
(Assembly Set)

89-123800-02-STD
89-71485-STD



Piston - Blok Montaj
Yüksekliği
(Piston - Block
Assembly Height)

14-480720-00-WH
Dış Yüzeyi Fosfat Kaplı
(Outer Surface
Phosphate Coated)

89-136900-52-STD
89-71485-STD

14-480720-00-WH
Dış Yüzeyi Fosfat Kaplı
(Outer Surface
Phosphate Coated)

89-123800-32-STD
89-71485-STD



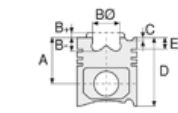


Motor Özellikleri
(Engine Specifications)

İmalatçı (Manufacturer):
KHD-FORD LKW
Çap (Diameter): Ø 108
FM Grup No: 3071

DEUTZ BF6M 1013
EURO2

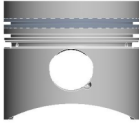
6 Sil. Dizel 7146cc 195
Kw (265 PS) 17, 6:1
Turbo Intercooled /
KHD ile Ortak Motor
(With KHD Common
Engine)
1827, 2527, 3227
1999 - 2003



Piston Ölçüleri
(Piston Dimensions)

A : 71.150
B- : 18.800
BØ : 63.000
BX : 4.000
BY : 2.300
D : 108.000
E : 8.200

Pim : 42 x 86



Piston Özellikleri
(Piston Features)

Segman Taşıyıcı
(Ring Carrier)
Gözarası Konik
(Conical Eye Gap)



Piston Parça No
(Piston Part No)

87-136900-22
87-71487-STD



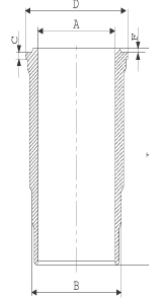
Segman Seti
(Ring Set)

06-136900-00-STD
3.000 CK KV1
2.000 NTP KV1
3.500 CRP STD
Goetze® LKZ-Ring®



Silindir Gömleği
(Liner)

14-480040-00-WH
B : 118.000
L : 229.100
D : 128.500
C : 9.000
F : 1.100



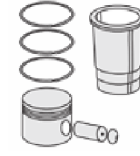
O RİNG BİLGİ
(O Ring Information)
24-35047-30/O
2 X (112*3)
FKM PEROXIDE

14-480041-00-WH
B : 118.000
L : 229.100
D : 128.500
C : 9.500
F : 1.100

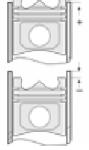
Flanş Kalınlığı Ve
Flanş Alt Boğaz Çapı
+0,50 mm Farklı
(Flange Thickness And
Flange Bottom
Throat Diameter
+0.50mm Different)

14-480042-00 WH
B : 118.000
L : 229.100
D : 128.500
C : 10.000
F : 1.100

Flanş Kalınlığı Ve Flanş
Alt Boğaz Çapı +1,00
Farklı Çalışması
(Flange Thickness And
Flange Lower Throat
Diameter +1.00
Different Operation)



Silindir Kit
(Assembly Set)



Piston - Blok Montaj
Yüksekliği
(Piston - Block
Assembly Height)

+ 0,25 / + 0,54
+ 0,54 / + 0,64
+ 0,64 / + 0,74





Motor Özellikleri
(Engine Specifications)

İmalatçı (Manufacturer):
VOLVO-KHD
Çap (Diameter): Ø 108
FM Grup No: 450111

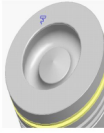
TCD 2013 Euro3
LO62V
6 Sil. Dizel 7146cc 184
kW (250 HP) C. Rail R7

TCD 2013 Euro3
LO42V
4 Sil. Dizel 4764cc
120-129 kw /163-175
PS 18, 1:1

Piston Ölçüleri
(Piston Dimensions)

A : 71.150
B : 19.600
BØ : 64.000
BX : 4.000
BY : 2.000
D : 108.000
E : 14.040

Pim : 42 x 86



Piston Özellikleri
(Piston Features)

Segman Taşıyıcı
(Ring Carrier)
Yağ Püskürtme Oyuğu
(Oil Jet Cut-Out)
Gözarası Konik
(Conical Eye Gap)



Piston Parça No
(Piston Part No)

87-136900-62
87-71494-STD



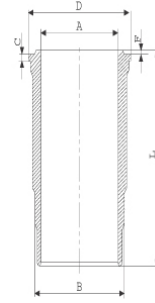
Segman Seti
(Ring Set)

06-136900-00-STD
3.000 CK KV1
2.000 NTP KV1
3.500 CRP STD
Goetze® LKZ-Ring®

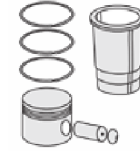


Silindir Gömleği
(Liner)

14-480040-00-WH
B : 118.000
L : 229.100
D : 128.500
C : 9.000
F : 1.100

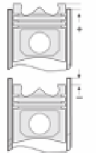


O RİNG BİLGİ
(O Ring Information)
24-35047-30/O
2 X (112*3) FKM
PEROXIDE



Silindir Kit
(Assembly Set)

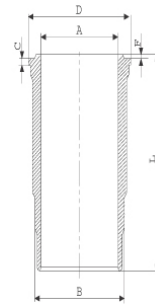
89-136900-62-STD
89-71494-STD



Piston - Blok Montaj
Yüksekliği
(Piston - Block
Assembly Height)

1,15 mm Conta ile
(With Gasket)
0,31/0,40
1,25 mm Conta ile
(With Gasket)
0,41 / 0,50

14-480720-00-WH
B : 120.000
L : 229.100
D : 128.500
C : 9.000
F : 1.100



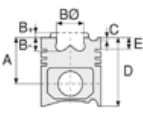
DIŞ YÜZEYİ FOSFAT
KAPLI
(Outer Surface
Phosphate Coated)

89-136900-72-STD
89-71494-STD

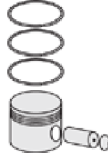




Motor Özellikleri
(Engine Specifications)



Piston Ölçüleri
(Piston Dimensions)



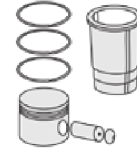
Piston Parça No
(Piston Part No)



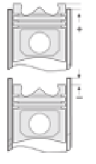
Segman Seti
(Ring Set)



Silindir Gömleği
(Liner)



Silindir Kit
(Assembly Set)



Piston - Blok Montaj
Yüksekliği
(Piston - Block
Assembly Height)

14-480040-00-WH
O RİNG BİLGİ
(O Ring Information)
24-35047-30/O
2 X (112*3) FKM
PEROXIDE

14-480041-00-WH
B : 118.000
L : 229.100
D : 128.500
C : 9.500
F : 1.100

Flanş Kalınlığı ve
Flanş alt boğaz çapı
+0,50 mm farklı
(Flange Thickness and
Flange lower throat
diameter+0.50mm
different)

14-480042-00-WH
B : 118.000
L : 229.100
D : 128.500
C : 10.000
F : 1.100

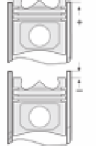
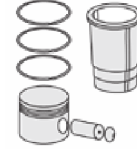
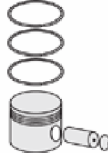
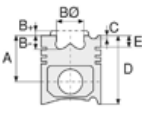
Flanş Kalınlığı ve
Flanş alt boğaz çapı
+1,00 farklı çalışması
(Flange Thickness and
Flange lower throat
diameter+1.00mm
different)





KHD - Ø 108

87-71495-STD



Motor Özellikleri
(Engine Specifications)

İmalatçı (Manufacturer):
KHD
Çap (Diameter): Ø 108
FM Grup No: 450114

2013 Euro 3

6 Sil. Dizel 4761cc 118
Kw (160 Ps)
Volvo İle Ortak Motor
(With Volvo Common
Engine)
Agrotron 710
2009...

Piston Ölçüleri
(Piston Dimensions)

A : 70.900
B- : 19.600
BØ : 64.600
D : 107.800
E : 14.100

Pim : 45 x 86






Piston Özellikleri
(Piston Features)

Segman Taşıyıcı
(Ring Carrier)
Soğutma Kanallı
(Cooling Gallery)
Yağ Püskürtme Oyuğu
(Oil Jet Cut-Out)
Gözarası Konik
(Conical Eye Gap)

Piston Parça No
(Piston Part No)

87-863000-02
87-71495-STD

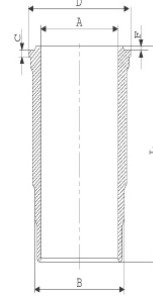
Segman Seti
(Ring Set)

06-863000-20-STD
3.000  CKS KV1
2.000  P IKA
3.500  STD

Goetze® LKZ-Ring®

Silindir Gömleği
(Liner)

14-480450-00-WH
B : 118.000
L : 227.800
D : 131.700
C : 8.050



O-RING BİLGİ
(O Ring Information)
24-35047-30/O
2x 112,00*3,00 FPM

Silindir Kit
(Assembly Set)

89-863000-02-STD
89-71495-STD

Piston - Blok Montaj
Yüksekliği
(Piston - Block
Assembly Height)

1,15 mm Conta İle
(With Gasket)
0,31 / 0,40

1,25 mm Conta İle
(With Gasket)
0,41 / 0,50





VOLVO-KHD - Ø 108

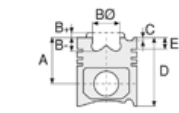
87-73665-STD



Motor Özellikleri
(Engine Specifications)

İmalatçı (Manufacturer):
VOLVO
Çap (Diameter): Ø 120,01
FM Grup No: 8878

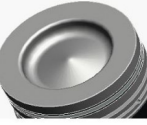
D9A Euro 3
6 Sil. Dizel 9664cc
134-283 KW (264-385 PS)
18:1 Fm9 2001...



Piston Ölçüleri
(Piston Dimensions)

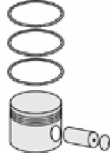
A : 85.450
B : 14.570
BØ : 77.000
D : 129.950
E : 13.900

Pim : 54 x 96



Piston Özellikleri
(Piston Features)

Segman Taşıyıcı
(Ring Carrier)
Soğutma Kanallı
(Cooling Gallery)
Yağ Püskürtme Oyuğu
(Oil Jet Cut-Out)
Gözarası Konik
(Conical Eye Gap)



Piston Parça No
(Piston Part No)

87-832800-02
87-73665-STD



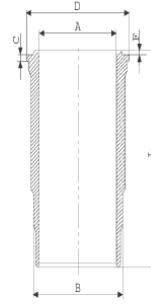
Segman Seti
(Ring Set)

06-832800-80-STD
4.000 CK KVI
3.000 IKA
3.000 NT ST

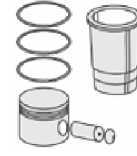


Silindir Gömleği
(Liner)

14-480230-00-WH
B : 139.000
L : 250.050
D : 149.000
C : 11.200
F : 0.850

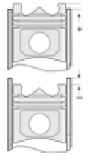


O-RING BİLGİ
(O Ring Information)
24-35044-30/O
1x 128*137*5 EPDM
1x 128*137*5 FPM
1x 132,50*2,40 FPM



Silindir Kit
(Assembly Set)

89-832800-02-STD
89-73665-STD



Piston - Blok Montaj
Yüksekliği
(Piston - Block
Assembly Height)



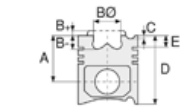


Motor Özellikleri
(Engine Specifications)

İmalatçı (Manufacturer):
VOLVO
Çap (Diameter): Ø 120,01
FM Grup No: 880159

D9B EURO 5

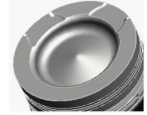
6 Sil. Dizel 9400cc 191
kW(260 hp) B9 OTOBUS
(Truck)
2009...



Piston Ölçüleri
(Piston Dimensions)

A : 85.450
B- : 14.850
BØ : 79.000
C1 : 1.000
C2 : 1.000
D : 129.950
E : 14.100

Pim : 54 x 96



Piston Özellikleri
(Piston Features)

Segman Taşıyıcı
(Ring Carrier)
Soğutma Kanallı
(Cooling Gallery)
Yağ Püskürtme Oyuğu
(Oil Jet Cut-Out)
Gözarası Konik
(Conical Eye Gap)



Piston Parça No
(Piston Part No)

87-833600-02
87-73666-STD



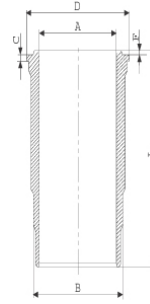
Segman Seti
(Ring Set)

06-833600-20-STD
3.500 PVD ST
2.500 NT ST
3.000 NT ST



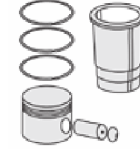
Silindir Gömleği
(Liner)

14-480460-00-WH
B : 139.000
L : 250.050
D : 149.000
C : 11.200
F : 1.020



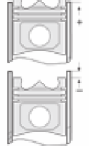
O-RING BİLGİ
(O Ring Information)
24-35044-30/O
1x 128*137*5 EPDM
1x 128*137*5 FPM
1x 132,50*2,40 FPM

14-480460-00-WH
O-RING BİLGİ
(O Ring Information)
24-35044-30/O
1x 128*137*5 EPDM
1x 128*137*5 FPM
1x 132,50*2,40 FPM



Silindir Kit
(Assembly Set)

89-833600-02-STD
89-73666-STD

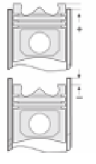
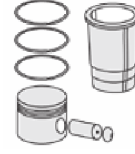
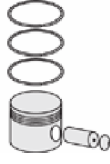
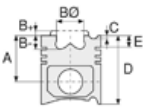


Piston - Blok Montaj
Yüksekliği
(Piston - Block
Assembly Height)



KHD - Ø 110

87-71492-STD



Motor Özellikleri
(Engine Specifications)

Piston Ölçüleri
(Piston Dimensions)

Piston Parça No
(Piston Part No)

Segman Seti
(Ring Set)

Silindir Gömleği
(Liner)

Silindir Kit
(Assembly Set)

Piston - Blok Montaj
Yüksekliği
(Piston - Block
Assembly Height)

İmalatçı (Manufacturer):
KHD
Çap (Diameter): Ø 110
FM Grup No: 450125

A : 87.000
BX : 12.000
D : 154.000
E : 18.000

87-160800-02
87-71492-STD

06-160800-30-STD
06-160807-30-0,50 mm
06-160811-30-1,00 mm
06-160814-30-1,50 mm

3.000 CR STD
3.000 STD
3.000 STD
6.000 STD
6.000 STD

F4AL514 / F4L514
4 Sil. Dizel 5320cc
37-48 Kw-50-65 PS
Sabit Motor (Fixed Engine),
Tractor

Pim : 40 x 93



Piston Özellikleri
(Piston Features)

Gözarası Düz
(Flat Eye Gap)





KHD - Ø 110

87-71493-STD

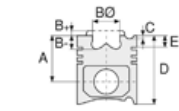


Motor Özellikleri
(Engine Specifications)

İmalatçı (Manufacturer):
KHD
Çap (Diameter): Ø 110
FM Grup No: 450127

TCD 7.8
6 Sil. Dizel 7750cc
250 KW-340 PS 18,0;1

ENDUSTRIYEL,
İŞ MAKİNASI,
JENERATÖR, MARİNE
(Industrial,
Working Machine,
Generator, Marine)



Piston Ölçüleri
(Piston Dimensions)

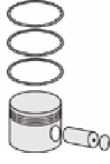
A : 70.950
B - : 20.000
D : 106.950
E : 12.150

Pim: 46 x 88



Piston Özellikleri
(Piston Features)

Segman Taşıyıcı
(Ring Carrier)
Soğutma Kanallı
(Coolin Gallery)
Yağ Püskürtme Oyuğu
(Oil Jet Cut-out)
Gözarası Konik
(Conical Eye Gap)



Piston Parça No
(Piston Part No)

87-863300-02
87-71493-STD



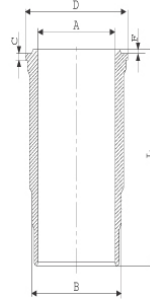
Segman Seti
(Ring Set)

06-863300-00 STD
3.000 CKS KV1
2.000 F14
3.500 CKS GOE

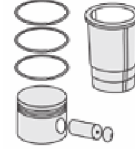


Silindir Gömleği
(Liner)

14-481090-00-WH
B : 118.000
L : 226.000
D : 131.700
C : 8.060

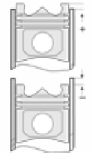


24-35047-30/0
2x 112,00*3,00 FPM



Silindir Kit
(Assembly Set)

89-863300-02-STD
89-71493-STD



Piston - Blok Montaj
Yüksekliği
(Piston - Block
Assembly Height)





KHD - Ø 120

06-172900-80-STD



Motor Özellikleri
(Engine Specifications)

İmalatçı (Manufacturer):
KHD
Çap (Diameter): Ø 120
FM Grup No: 4521

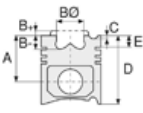
F5 L 413
5 Sil. Dizel 7070cc
ENDÜSTRİYEL (Industrial)
1967...

F6 L 413/L
6 Sil. Dizel 8480cc 137
Kw (183 PS) 18, 5:1
ENDÜSTRİYEL (Industrial)
1980...

F8 L 413L
8 Sil. Dizel 11310cc 179
Kw (244 PS) 18, 5:1
ENDÜSTRİYEL (Industrial)
1980...

F10 L 413L
10 Sil. Dizel 14140cc
ENDÜSTRİYEL (Industrial)
1967...

F12 L 413
12 Sil. Dizel
ENDÜSTRİYEL (Industrial)
1967...



Piston Ölçüleri
(Piston Dimensions)



Piston Parça No
(Piston Part No)



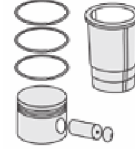
Segman Seti
(Ring Set)

06-172900-80-STD
06-172907-80-0,50 mm

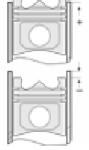
3.500  CK KV1
3.000  STD
3.000  STD
6.000  CRP STD



Silindir Gömleği
(Liner)



Silindir Kit
(Assembly Set)



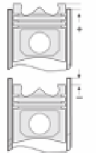
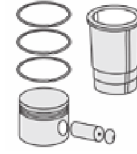
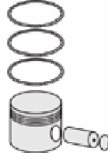
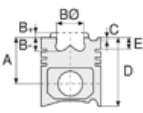
Piston - Blok Montaj
Yüksekliği
(Piston - Block
Assembly Height)





KHD - Ø 120

87-71508-STD A



Motor Özellikleri
(Engine Specifications)

İmalatçı (Manufacturer):
KHD
Çap (Diameter): Ø 120
FM Grup No: 4524

A 6 L 413, F 6 L 413
6 Sil. Dizel 8480cc 125/130
Kw (170/176 PS) 18:1
120, 170
1968 - 1986

F 8 L 413
8 Sil. Dizel 11310cc
132,5/171 Kw (180/232 PS)
18:1 200, 210, 230, 232
1968 - 1980

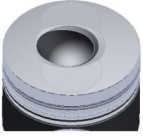
F 10 L 413
10 Sil. Dizel 14140cc
213,5/224,5 Kw
(290/305 PS) 18:1
290, 310

F 12 L 413
12 Sil. Dizel 16960cc
240/250 Kw (326/340 PS)
18:1 120, 170, 200, 210,
230, 232, 290, 310, 340
1968 - 1981

Piston Ölçüleri
(Piston Dimensions)

A : 90.160
B - : 45.550
B : 5.090
B0 : 46.000
C1 : 1.020
D : 145.250
E : 24.400

Pim : 45 x 96



Piston Özellikleri
(Piston Features)

Segman Taşıyıcı
(Ring Carrier)
Yağ Püskürtme Oyuğu
(Oil Jet Cut-Out)
Gözarası Düz
(Flat Eye Gap)

Piston Parça No
(Piston Part No)

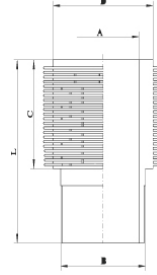
87-167600-12
87-71508-STD A
87-167607-12
87-71508-050A
87-167611-12
87-71508-100A
87-167614-12
87-71508-150A

Segman Seti
(Ring Set)

06-167600-30-STD
06-167607-30-0,50 mm
06-167611-30-1,00 mm
06-167614-30-1,50 mm
3.000 CR IKA
3.000 STD
3.000 STD
6.000 CR STD

Silindir Gömleği
(Liner)

14-900070-00-WH
B : 132.000
L : 255.100
D : 145.000
C : 169.900



Silindir Kit
(Assembly Set)

88-167600-12-STD
88-71508-STD A

Piston - Blok Montaj
Yüksekliği
(Piston - Block
Assembly Height)

+1,10 / +1,30





KHD - Ø 125

87-71511-STD



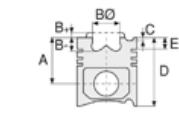
Motor Özellikleri
(Engine Specifications)

İmalatçı (Manufacturer):
KHD
Çap (Diameter): Ø 125
FM Grup No: 4586

BF10 L 413 F, BF10 L 513 C
10 Sil. Dizel 15945cc
265-294 KW (360-400 PS)
16.5:1 190, 320, 360
1975 - 1983

BF12 L 413 F, BF12 L 513 C
12 Sil. Dizel 19140cc
335-353 KW (456-480 PS)
16.5:1 3000, 3500, 360 D
34 AS, FKL, FKM, MFS 42,
N 4520, N 4530, N 4540,
N 4550, N 4620
1985...

BF8 L 413 F, BF8 L 513 C
8 Sil. Dizel 12763cc
212-235 KW (288-320 PS)
16.5:1 190, 2000, 250,
260, 290, 320, 360,
4520, 4530, 4550, 4620,
8000
1975...



Piston Ölçüleri
(Piston Dimensions)

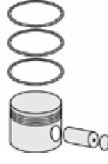
A : 87.400
B - : 22.400
B : 5.250
BØ : 66.000
BX : 4.000
BY : 2.000
D : 138.650
E : 23.000

Pim : 45 x 107



Piston Özellikleri
(Piston Features)

Segman Taşıyıcı
(Ring Carrier)
Sert Anotlama
(Hard Anodizing)
Soğutma Kanallı
(Cooling Gallery)
Yağ Püskürtme Oyuğu
(Oil Jet Cut-Out)
Gözarası Konik
(Conical Eye Gap)



Piston Parça No
(Piston Part No)

87-740300-72
87-71511-STD

87-740307-72
87-71511-0,50

87-740311-72
87-71511-1,00



Segman Seti
(Ring Set)

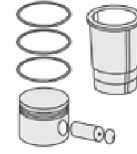
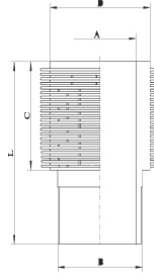
06-740300-80-STD
06-740307-80-0,50 mm
06-740311-80-1,00 mm

3.000 CK KV1
2.500 STD
4.000 CR STD
Goetze® LKZ-Ring®



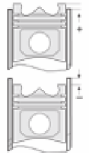
Silindir Gömleği
(Liner)

14-900030-00-WH
B : 139.000
L : 250.800
D : 154.000
C : 169.500



Silindir Kit
(Assembly Set)

88-740300-72-STD
88-71511-STD



Piston - Blok Montaj
Yüksekliği
(Piston - Block
Assembly Height)

+1,15 / + 1,30





KHD - Ø 125

87-71512-STDD



Motor Özellikleri
(Engine Specifications)

İmalatçı (Manufacturer):
KHD
Çap (Diameter): Ø 125
FM Grup No: 4525

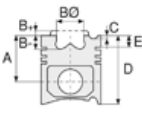
F5 L 413 F / FR
5 Sil. Dizel 7976cc 109
Kw (148 PS) 18:1 1975...

F6 L 413 F / FR
6 Sil. Dizel 9572cc 141
Kw (192 PS) 18:1
1975...

F8 L 413 F
8 Sil. Dizel 12763cc 188
Kw (256 PS) 18:1
1975...

F10 L 413 F
10 Sil. Dizel 15945cc 235
Kw (320 PS) 18:1
1975....

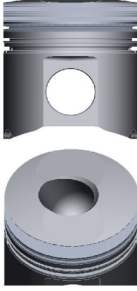
F12 L 413 F
12 Sil. Dizel 19140cc 282
Kw (383PS) 18:1 192 M 14 FL,
256 D 16 AK, 256 D 16 FL,
256 D 26 AK/U, 256 M 19 FL,
256 M 22 FLL, 260 L 117, 260
T 117, 320 D 16 FS, 320 D 19
AK, 320 M 16 FSL
1975...



Piston Ölçüleri
(Piston Dimensions)

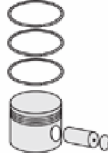
A : 87.400
B - : 47.650
B : 5.250
BØ : 48.000
C1 : 1.000
C2 : 1.200
D : 138.650
E : 23.000

Pim : 45 x 102



Piston Özellikleri
(Piston Features)

Segman Taşıyıcı
(Ring Carrier)
Sert Anotlama
(Hard Anodizing)
Yağ Püskürtme Oyuğu
(Oil Jet Cut-Out)
Gözarası Düz
(Flat Eye Gap)



Piston Parça No
(Piston Part No)

87-740300-52
87-71512-STDD

87-740307-52
87-71512-050D

87-740311-52
87-71512-100D



Segman Seti
(Ring Set)

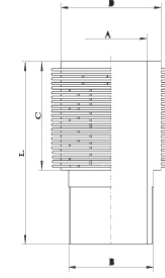
06-740300-80-STD
06-740307-80-0,50 mm
06-740311-80-1,00 mm

3.000 CK KV1
2.500 STD
4.000 CR STD
Goetze® LKZ-Ring®

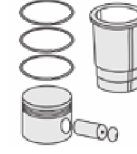
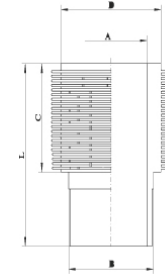


Silindir Gömleği
(Liner)

14-900050-00-WH
B : 139.000
L : 250.800
D : 150.000
C : 169.500

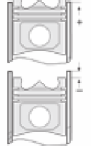


14-900030-00-WH
B : 139.000
L : 250.800
D : 154.000
C : 169.500



Silindir Kit
(Assembly Set)

88-740300-52-STD
88-71512-STDD



Piston - Blok Montaj
Yüksekliği
(Piston - Block
Assembly Height)

+1,15 / + 1,30





KHD - Ø 125

87-71513-STDC



Motor Özellikleri
(Engine Specifications)

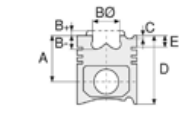
İmalatçı (Manufacturer):
KHD
Çap (Diameter): Ø 125
FM Grup No: 4526

BF6 L 413 F, BF6 L 513 C
6 Sil. Dizel 9572cc 122/177
Kw (152/241 PS) 16, 5:1
Turbo Intercooled
DX 2304, DX8.30
1984...

BF8 L 413 F, BF8 L 513C
8 Sil. Dizel 212/235
Kw (288/320 PS) 16, 5:1
Turbo Intercooled 190,
2000, 250, 260, 290, 320,
360, 4520, 4530, 4550,
4620, 8000
1984...

BF10 L 413 F, BF10 L 513 C
10 Sil. Dizel 15945cc
265/294 Kw (360/400 PS)
16, 5:1 Turbo Intercooled
190, 320, 360
1984...

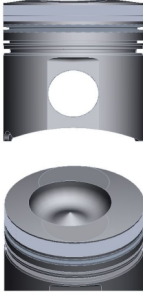
BF12 L 413 F, BF12 L 513 C
12 Sil. Dizel 19140cc 335/353
Kw (456/480 PS) 16, 5:1
Turbo Intercooled
Motor No (Engine NO):
07159125
3000, 3500, 360 D 34 AS,
FKL, FKM, MFS 42, N 4520,
N 4530, N 4540, N 4550,
N 4620
1984...



Piston Ölçüleri
(Piston Dimensions)

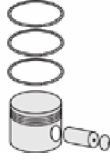
A : 87.400
B - : 22.100
B : 5.250
BØ : 74.000
BX : 4.000
BY : 2.000
C1 : 1.000
C2 : 1.200
D : 138.650
E : 23.000

Pim : 45 x 107



Piston Özellikleri
(Piston Features)

Segman Taşıyıcı
(Ring Carrier)
Sert Anotlama
(Hard Anodizing)
Soğutma Kanallı
(Cooling Gallery)
Yağ Püskürtme Oyuğu
(Oil Jet Cut-Out)
Gözarası Konik
(Conical Eye Gap)



Piston Parça No
(Piston Part No)

87-740300-82
87-71513-STDC
87-740307-82
87-71513-050C
87-740311-82
87-71513-100C



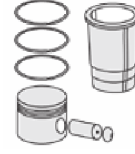
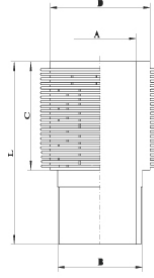
Segman Seti
(Ring Set)

06-740300-80-STD
06-740307-80-0,50 mm
06-740311-80-1,00 mm
3.000 CK KV1
2.500 STD
4.000 CR STD
Goetze® LKZ-Ring®



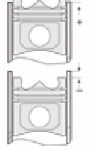
Silindir Gömleği
(Liner)

14-900030-00-WH
B : 139.000
L : 250.800
D : 154.000
C : 169.500



Silindir Kit
(Assembly Set)

88-740300-82-STD
88-71513-STDC



Piston - Blok Montaj
Yüksekliği
(Piston - Block
Assembly Height)

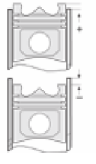
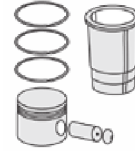
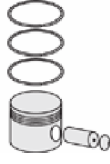
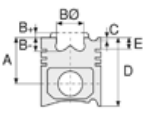
+1,15 / + 1,30





KHD - Ø 128

87-71514-STDC



Motor Özellikleri
(Engine Specifications)

İmalatçı (Manufacturer):
KHD
Çap (Diameter): Ø 128
FM Grup No: 4527

F6 L 513 F
6 Sil. Dizel 10038cc 141
Kw (192 PS) 17:1
1966...

F8 L 513 F
8 Sil. Dizel 13384cc 188
Kw (256 PS) 17:1
1966...

F10 L 513 F
10 Sil. Dizel 16730cc 235
Kw (320 PS) 17:1
1966...

F12 L 513 F
12 Sil. Dizel 20076cc
282 Kw (383PS) 17:1
1966...

Piston Ölçüleri
(Piston Dimensions)

A : 87.150
B - : 30.000
B : 5.500
BØ : 55.000
BX : 3.000
BY : 2.500
C1 : 1.000
C2 : 1.200
D : 138.650
E : 8.200

Pim : 46 x 102



Piston Özellikleri
(Piston Features)

Segman Taşıyıcı
(Ring Carrier)
Sert Anotlama
(Hard Anodizing)
Soğutma Kanallı
(Cooling Gallery)
Yağ Püskürtme Oyuğu
(Oil Jet Cut-Out)
Gözarası Konik
(Conical Eye Gap)

Piston Parça No
(Piston Part No)

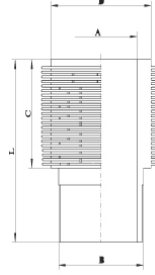
87-740400-22
87-71514-STDC
87-740407-22
87-71514-050C
87-740411-22
87-71514-100C

Segman Seti
(Ring Set)

06-740400-80-STD
06-740407-80-0,50 mm
06-740411-80-1,00 mm
3.500 CK KV1
3.000 STD
4.000 CR STD
Goetze® LKZ-Ring®

Silindir Gömleği
(Liner)

14-000370-00-WH
B : 137.000
L : 250.800
D : 154.000
C : 169.500



Silindir Kit
(Assembly Set)

88-740400-22-STD
88-71514-STDC

Piston - Blok Montaj
Yüksekliği
(Piston - Block
Assembly Height)

+1,10 / + 1,20





KHD - Ø 132

87-71520-STD



Motor Özellikleri
(Engine Specifications)

İmalatçı (Manufacturer):
KHD
Çap (Diameter): Ø 132
FM Grup No: 4599

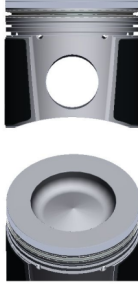
BF 6 M 1015C Euro2
6 Sil. Dizel 11910cc 228-341
Kw(310-464 Ps) 17:1
Intercooler Gigant 400,
İş Makinası (Working Machine),
Sabit Motor (Fixed Engine),
Topliner 8 XL
1993...

BF 8 M 1015C Euro2
8 Sil. Dizel 15870cc 304-454
Kw(414-617 Ps) 17:1 Intercooler
İş Makinası (Working Machine),
Sabit Motor (Fixed Engine)
1990...

Piston Ölçüleri
(Piston Dimensions)

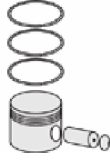
A : 86.800
B- : 18.800
BØ : 84.000
D : 133.800
E : 15.200

Pim : 52 x 110



Piston Özellikleri
(Piston Features)

Segman Taşıyıcı
(Ring Carrier)
Yağ Püskürtme Oyuğu
(Oil Jet Cut-Out)
Gözarası Konik
(Conical Eye Gap)



Piston Parça No
(Piston Part No)

87-862900-02
87-71520-STD



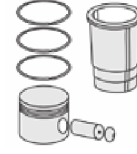
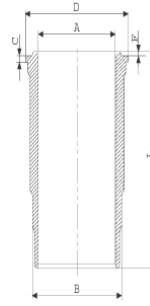
Segman Seti
(Ring Set)

06-862900-20-STD
3.500 CK KV1
2.450 CR F14
4.000 CR STD
Goetze® LKZ-Ring®



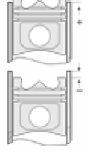
Silindir Gömleği
(Liner)

14-450960-00-WH
B : 147.000
L : 268.500
D : 158.000
C : 9.200
F : 1.250



Silindir Kit
(Assembly Set)

88-862900-02 -STD
88-71520-STD



Piston - Blok Montaj
Yüksekliği
(Piston - Block
Assembly Height)

1 Kertik Conta İle
(With Notch Gasket)
-0,05 / +0,10
2 Kertik Conta İle
(With Notch Gasket)
+0,11 / +0,30
3 Kertik Conta İle
(With Notch Gasket)
+0,31 / +0,50

