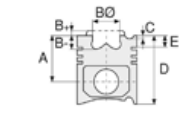




Motor Özellikleri
(Engine Specifications)

İmalatçı (Manufacturer):
KIA-HYUNDAI
Çap (Diameter): Ø 75
FM Grup No: 3616

D4FA C.Rail
4 Sil. Dizel 1493cc 81KW
(110 Ps) 17.8:1
ACCENT ERA 16V
2005...



Piston Ölçüleri
(Piston Dimensions)

A : 41.950
B - : 12.200
BØ : 43.400
C1 : 0.500
D : 65.700
E : 9.200

Pim : 28 x 62



Piston Özellikleri
(Piston Features)

Segman Taşıyıcı
(Ring Carrier)
Soğutma Kanallı
(Cooling Gallery)
Yağ Püskürtme Oyuğu
(Oil Jet Cut-Out)
Gözarası Düz
(Flat Eye Gap)



Piston Parça No
(Piston Part No)

87-849000-02
87-71128-STD
87-849007-02
87-71128-050



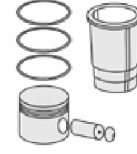
Segman Seti
(Ring Set)

06-849000-00-STD
06-849007-00-0,50 mm
1.750 CK ST
1.750 CRP KV1
3.000 NT ST

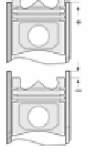


Silindir Gömleği
(Liner)

14-022020-00-D
B : 78.500
L : 143.000
D : 79.500
C : 5.000



Silindir Kit
(Assembly Set)



Piston - Blok Montaj
Yüksekliği
(Piston - Block
Assembly Height)

1-1,15 mm Conta İle
(With Gasket)
0,035 / 0,105
1,05-1,20 mm Conta İle
(With Gasket)
0,105 / 0,175
1,10-1,25 mm Conta İle
(With Gasket)
0,175 / 0,245





KIA-HYUNDAI - Ø 77,2

87-71117-STD



Motor Özellikleri
(Engine Specifications)

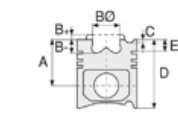
İmalatçı (Manufacturer):
KIA-HYUNDAI
Çap (Diameter): Ø 77,2
FM Grup No: 3618

D4FB

4 Sil. Dizel 1582cc
115 PS 17:3 CERATO, İ 30
2007...

D4FB

4 Sil. Dizel 1582cc
115 PS 17:3 CERATO, İ 30
2007...



Piston Ölçüleri
(Piston Dimensions)

A : 41.950
B - : 12.700
BØ : 44.000
C1 : 0.500
D : 65.700
E : 9.200

Pim : 28 x 62



Piston Özellikleri
(Piston Features)

Segman Taşıyıcı
(Ring Carrier)
Soğutma Kanallı
(Cooling Gallery)
Yağ Püskürtme Oyuğu
(Oil Jet Cut-Out)



Piston Parça No
(Piston Part No)

87-850500-02
87-71117-STD
87-850507-02
87-71117-0,50



Segman Seti
(Ring Set)

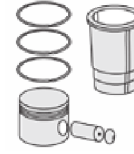
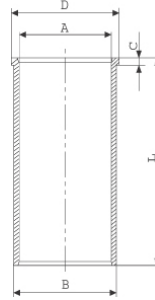
06-850500-00-STD
06-850507-00-0,50

1.750 PVD ST
1.750 CR KVI
3.000 NT ST

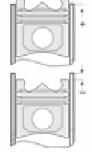


Silindir Gömleği
(Liner)

14-022250-00-D
B : 80.200
L : 140.000
D : 81.700
C : 5.000



Silindir Kit
(Assembly Set)



Piston - Blok Montaj
Yüksekliği
(Piston - Block
Assembly Height)

1 Çentik Conta İle
(With Notch Gasket)
0,04 / 0,10

2 Çentik Conta İle
(With Notch Gasket)
0,11 / 0,18

3 Çentik Conta İle
(With Notch Gasket)
0,19 / 0,25





KIA-HYUNDAI - Ø 83

87-71137-STD



Motor Özellikleri
(Engine Specifications)

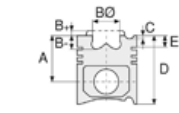
İmalatçı (Manufacturer):
KIA-HYUNDAI
Çap (Diameter): Ø 83
FM Grup No: 3611

D3EA

3 Sil. Dizel 1493cc 60
KW(82 PS) 17.7:1
Kia İle Ortak Motor
(With Kia Common
Engine)
ACCENT 1.5 CRDI,
GETZ 1.5 CRDI
2002...

D4EA

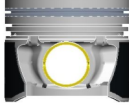
4 Sil. Dizel 1991cc 82
Kw (112 Ps) 17, 7:1
Kia İle Ortak Motor
(With Kia Common
Engine)
Santa Fe 2,0 CRDI,
Tucson 2,0 CRDI
2001 - 2008



Piston Ölçüleri
(Piston Dimensions)

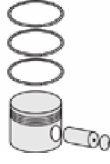
A : 46.300
B - : 13.900
BØ : 46.950
D : 71.300
E : 9.000

Pim : 28 x 65,5



Piston Özellikleri
(Piston Features)

Segman Taşıyıcı
(Ring Carrier)
Yağ Püskürtme Oyuğu
(Oil Jet Cut-Out)
Burçlu Piston
(Bushing Piston)
Gözarası Konik
(Conical Eye Gap)



Piston Parça No
(Piston Part No)

87-848207-03
87-71137-0501
0,20 mm Kısa (Short)

87-848200-02
87-71137-STD

87-848207-02
87-71137-050

87-848200-03
87-71137-STD1
0,20 mm Kısa (Short)



Segman Seti
(Ring Set)

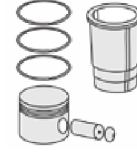
06-848200-00-STD
06-848207-00-0,50 mm

2.000 CKP ST
2.000 CRP GOE
3.000 NT ST

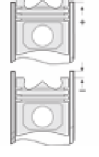


Silindir Gömleği
(Liner)

14-020580-00-D
B : 87.000
L : 155.000
D : 88.250
C : 5.000



Silindir Kit
(Assembly Set)



Piston - Blok Montaj
Yüksekliği
(Piston - Block
Assembly Height)

+0,30 / +0,39





KIA-HYUNDAI - Ø 84

87-71119-STD



Motor Özellikleri
(Engine Specifications)

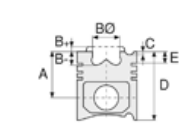
İmalatçı (Manufacturer):
KIA-HYUNDAI
Çap (Diameter): Ø 84
FM Grup No: 3631

D4HA

4 Sil. Dizel 1995cc 100
KW -136 PS 16,5
İX 35, SANTE FE 2.0 ,
SORENTO, SPORTAGE
2009...

D4HA

4 Sil. Dizel 1995cc 100
KW -136 PS 16,5
İX 35, SANTE FE 2.0 ,
SORENTO, SPORTAGE
2009...



Piston Ölçüleri
(Piston Dimensions)

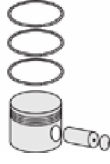
A : 48.900
B - : 15.700
BØ : 45.400
D : 75.900
E : 8.000

Pim : 34 x 66



Piston Özellikleri
(Piston Features)

Segman Taşıyıcı
(Ring Carrier)
Soğutma Kanallı
(Cooling Gallery)
Yağ Püskürtme Oyuğu
(Oil Jet Cut-Out)
Gözarası Konik
(Conical Eye Gap)



Piston Parça No
(Piston Part No)

87-849900-02
87-71119-STD
87-849907-00
87-71119-0,50

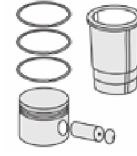


Segman Seti
(Ring Set)

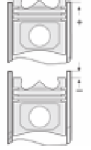
06-849900-00-STD
06-849907-00-0,50 mm
2.500 CKS ST
2.000 P F14
3.000 NT ST



Silindir Gömleği
(Liner)



Silindir Kit
(Assembly Set)



Piston - Blok Montaj
Yüksekliği
(Piston - Block
Assembly Height)





KIA - Ø 85,4

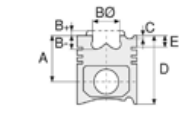
87-71172-STD



Motor Özellikleri
(Engine Specifications)

İmalatçı (Manufacturer):
KIA
Çap (Diameter): Ø 85,4
FM Grup No: 4612

D4HB
4 Sil. Dizel 2199cc 147
KW-200PS
SORENTO II-III
2009...



Piston Ölçüleri
(Piston Dimensions)

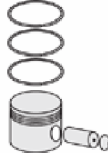
A : 49.900
B - : 16.100
BØ : 47.400
D : 76.900
E : 8.100

Pim : 34 x 66



Piston Özellikleri
(Piston Features)

Segman Taşıyıcı
(Ring Carrier)
Soğutma Kanallı
(Cooling Gallery)
Yağ Püskürtme Oyuğu
(Oil Jet Cut-Out)
Gözarası Konik
(Conical Eye Gap)



Piston Parça No
(Piston Part No)

87-851700-02
87-71172-STD
87-851707-02
87-71172-0,50



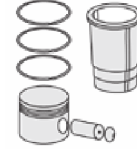
Segman Seti
(Ring Set)

06-851700-00-STD
06-851707-00-0,50

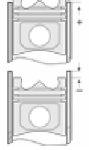
2.500  CK ST
2.000  P F14
3.000  NT ST



Silindir Gömleği
(Liner)



Silindir Kit
(Assembly Set)



Piston - Blok Montaj
Yüksekliği
(Piston - Block
Assembly Height)

1,2 mm Conta İle
(With Gasket)
0,460-0,531
1,3 mm Conta İle
(With Gasket)
0,531-0,602
1,4 mm Conta İle
(With Gasket)
0,602-0,672





MAZDA-KIA - Ø 86

87-71338-STD



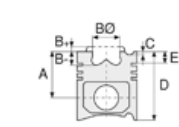
Motor Özellikleri
(Engine Specifications)

İmalatçı (Manufacturer):
MAZDA-KIA
Çap (Diameter): Ø 86
FM Grup No: 4601

R2

4 Sil. Dizel 2184cc 22, 9:1
Mazda İle Ortak Motor
(With Mazda Common
Engine)
BESTA YENİ TİP
(New type)
1993 - 1999

4 Sil. Dizel 2184cc 47 Kw
(64 Ps) 23:1
Kia ile ortak motor
(With Kia Common
Engine)
CREW CAP,
E 2200 VAN, PICK-UP
1983...



Piston Ölçüleri
(Piston Dimensions)

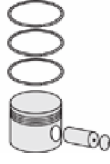
A : 47.350
B- : 1.600
D : 86.150
E : 13.750

Pim : 25 x 68



Piston Özellikleri
(Piston Features)

Segman Taşıyıcı
(Ring Carrier)
Çelik Plaka
(Steel Strut)
Soğutma Kanallı
(Cooling Gallery)
Gözarası Konik
(Conical Eye Gap)



Piston Parça No
(Piston Part No)

87-253300-02
87-71338-STD
87-253307-02
87-71338-050



Segman Seti
(Ring Set)

06-253300-00-STD
06-253307-00-0,50 mm
2.000 CRP KV1
2.000 P STD
3.000 CRP STD



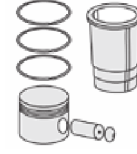
Silindir Gömleği
(Liner)

14-027100-00-D
B : 89.600
L : 165.000
D : 91.500
C : 5.000

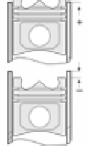


14-027101-00-D
B : 90.100
L : 165.000
D : 92.000
C : 5.000

Dış Çap 0,50mm Farklı
(Outside Diameter
0.50mm Different)



Silindir Kit
(Assembly Set)



Piston - Blok Montaj
Yüksekliği
(Piston - Block
Assembly Height)

Çelik Conta
(Steel Gasket)
+ 0,35 / + 0,55

Klingirit Conta
(Klingirite Gasket)
+ 0,35 / + 0,65





MAZDA-KIA - Ø 86

87-71340-STD



Motor Özellikleri
(Engine Specifications)

İmalatçı (Manufacturer):
MAZDA-KIA
Çap (Diameter): Ø 86
FM Grup No: 4602

4 Sil. Dizel 2184cc 22, 9:1
Mazda ile Ortak Motor
(With Mazda Common
Engine)
BESTA ESKİ TİP
(New Type)
1997...

Piston Ölçüleri
(Piston Dimensions)

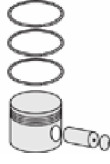
A : 47.350
B- : 1.600
D : 86.150
E : 13.750

Pim : 25 x 68



Piston Özellikleri
(Piston Features)

Segman Taşıyıcı
(Ring Carrier)
Çelik Plaka
(Steel Strut)
Gözarası Konik
(Conical Eye Gap)



Piston Parça No
(Piston Part No)

87-283600-02
87-71340-STD
87-283607-02
87-71340-050



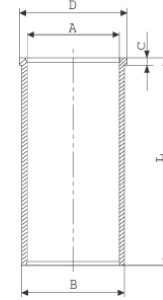
Segman Seti
(Ring Set)

06-283600-10-STD
06-283607-10-0,50 mm
2.000 CRP KV1
2.000 P STD
4.000 CRP STD



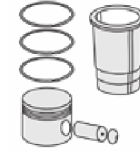
Silindir Gömleği
(Liner)

14-027100-00-D
B : 89.600
L : 165.000
D : 91.500
C : 5.000

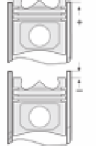


14-027101-00-D
B : 90.100
L : 165.000
D : 92.000
C : 5.000

Dış Çap 0,50mm Farklı
(Outside Diameter
0.50mm Different)



Silindir Kit
(Assembly Set)



Piston - Blok Montaj
Yüksekliği
(Piston - Block
Assembly Height)

Çelik Conta
(Steel Gasket)
+ 0,35 / + 0,55
Klingirit Conta
(Klingirite Gasket)
+ 0,35 / + 0,65





KIA - Ø 88,94

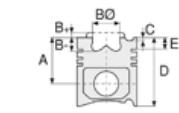
87-71341-STD



Motor Özellikleri
(Engine Specifications)

İmalatçı (Manufacturer):
KIA
Çap (Diameter): Ø 88,94
FM Grup No: 4603

S2
4 Sil. Dizel 2367cc 53
Kw (72 PS) CERES 2400



Piston Ölçüleri
(Piston Dimensions)

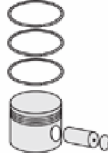
A : 50.750
B- : 1.700
D : 94.650
E : 14.800

Pim : 28 x 73



Piston Özellikleri
(Piston Features)

Segman Taşıyıcı
(Ring Carrier)
Çelik Plaka
(Steel Strut)
Gözarası Düz
(Flat Eye Gap)



Piston Parça No
(Piston Part No)

87-284100-02
87-71341-STD
87-284107-02
87-71341-050



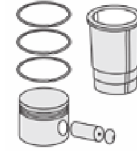
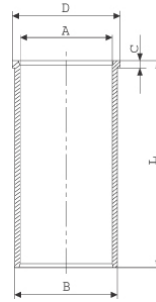
Segman Seti
(Ring Set)

06-284100-10-STD
06-284107-10-0,50 mm
2.385 CRP KV1
2.385 P STD
4.747 CRP STD

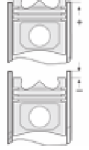


Silindir Gömleği
(Liner)

14-045670-00-D
B : 96.900
L : 167.500
D : 100.930
C : 3.810
F : 0.800



Silindir Kit
(Assembly Set)



Piston - Blok Montaj
Yüksekliği
(Piston - Block
Assembly Height)

+0,05 / +0,17





KIA-HYUNDAI - Ø 91

87-71120-STD



Motor Özellikleri
(Engine Specifications)

İmalatçı (Manufacturer):
KIA-HYUNDAI
Çap (Diameter): Ø 91
FM Grup No: 3622

D4BC
4 Sil. Dizel 2497cc
125 Kw-170 BG
STAREX 2,5 CRDI

Piston Ölçüleri
(Piston Dimensions)

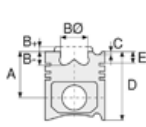
A : 54.250
B- : 15.000
BØ : 52.000
C1 : 0.340
D : 83.700
E : 9.200

Pim : 33 x 74



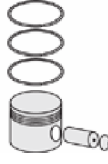
Piston Özellikleri
(Piston Features)

Segman Taşıyıcı
(Ring Carrier)
Soğutma Kanallı
(Cooling Gallery)
Yağ Püskürtme Oyuğu
(Oil Jet Cut-Out)
Burçlu Piston
(Bushing Piston)
Gözarası Konik
(Conical Eye Gap)



Piston Parça No
(Piston Part No)

87-848500-22
87-71120-STD
87-848507-22
87-71120-0,50



Segman Seti
(Ring Set)

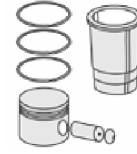
06-848500-00-STD
06-848507-00-0,50 mm
2.500 CKP KV4
2.000 CRP GOE
3.000 NT ST



Silindir Gömleği
(Liner)

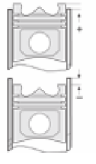


Silindir Kit
(Assembly Set)



Piston - Blok Montaj
Yüksekliği
(Piston - Block
Assembly Height)

0,92 / 0,98 mm Conta İle
(With Gasket)
+0,056 / +0,117
0,98 / 1,03 mm Conta İle
(With Gasket)
+0,117 / +0,178
1,03 / 1,08 mm Conta İle
(With Gasket)
+0,178 / +0,240



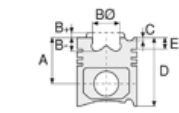


Motor Özellikleri
(Engine Specifications)

İmalatçı (Manufacturer):
HYUNDAI-KIA
Çap (Diameter): Ø 91
FM Grup No: 4610

2,5 CRDI

4 Sil. Dizel 2497cc 103
Kw(140 PS)
Hyundai İle Ortak Motor
(With Hyundai Common
Engine)
SORENTO
2002...



Piston Ölçüleri
(Piston Dimensions)

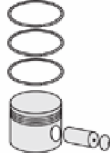
A : 54.250
B- : 15.000
BØ : 52.000
C1 : 0.300
D : 83.750
E : 9.000

Pim : 33 x 75



Piston Özellikleri
(Piston Features)

Segman Taşıyıcı
(Ring Carrier)
Soğutma Kanallı
(Cooling Gallery)
Yağ Püskürtme Oyuğu
(Oil Jet Cut-Out)
Gözarası Konik
(Conical Eye Gap)



Piston Parça No
(Piston Part No)

87-848507-03
87-73200-0501
0,20 mm Kısa (Short)

87-848500-02
87-73200-STD

87-848507-02
87-73200-050

87-848500-03
87-73200-STD1
0,20 mm Kısa (Short)



Segman Seti
(Ring Set)

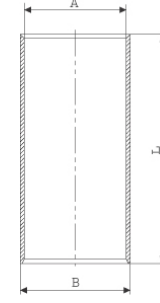
06-848500-00-STD
06-848507-00-0,50 mm

2.500 CKP KV4
2.000 CRP GOE
3.000 NT ST



Silindir Gömleği
(Liner)

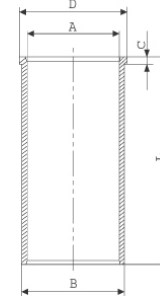
14-011150-00-D
B : 94.200
L : 170.000



14-011151-00-D
B : 94.700
L : 170.000

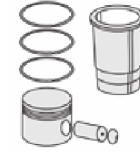
Dış Çap 0,50 mm Farklı
(Outside Diameter
0,50 mm Different)

14-022430-00-D
B : 94.200
L : 170.000
D : 95.500
C : 5.000

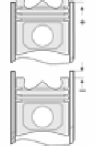


14-022431-00-D
B : 94.700
L : 170.000
D : 96.000
C : 5.500

Dış Çap 0,50 mm Farklı
(Outside Diameter
0,50 mm Different)



Silindir Kit
(Assembly Set)



Piston - Blok Montaj
Yüksekliği
(Piston - Block
Assembly Height)

+0,06 /+0,24





KIA - Ø 92,04

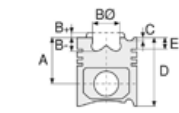
87-71343-STD



Motor Özellikleri
(Engine Specifications)

İmalatçı (Manufacturer):
KIA
Çap (Diameter): Ø 92,04
FM Grup No: 4604

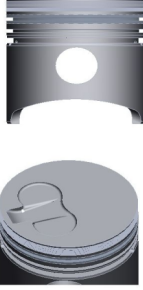
SF2400
4 Sil. Dizel 2367cc
53 Kw (72 PS) 21,7:1
CERES K2400



Piston Ölçüleri
(Piston Dimensions)

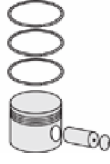
A : 50.600
B- : 1.950
BX : 5.000
D : 94.600
E : 14.200

Pim: 28 x 75



Piston Özellikleri
(Piston Features)

Segman Taşıyıcı
(Ring Carrier)
Çelik Plaka
(Steel Strut)
Gözarası Düz
(Flat Eye Gap)



Piston Parça No
(Piston Part No)

87-253600-02
87-71343-STD
87-253607-02
87-71343 050



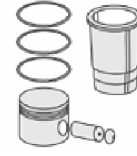
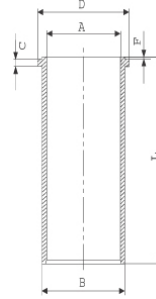
Segman Seti
(Ring Set)

06-253600-00-STD
06-253607-00 0,50 mm
2.385 CRP KV1
2.385 P STD
4.000 CRP STD

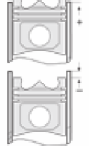


Silindir Gömleği
(Liner)

14-048570-00-D
B : 96.885
L : 167.000
D : 101.000
C : 3.700
F : 0.700



Silindir Kit
(Assembly Set)



Piston - Blok Montaj
Yüksekliği
(Piston - Block
Assembly Height)

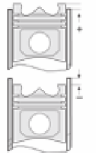
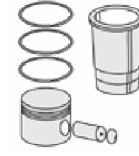
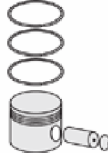
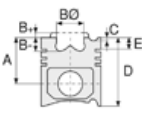
+ 0,20 / + 0,35





KIA - Ø 93

87-71335-STD



Motor Özellikleri
(Engine Specifications)

İmalatçı (Manufacturer):
KIA
Çap (Diameter): Ø 93
FM Grup No: 4605

NV
4 Sil.nDizel 2662cc 80 PS
HI-BESTA 2700
1997....

Piston Ölçüleri
(Piston Dimensions)

A : 48.250
B- : 1.700
D : 85.150
E : 13.600

Pim: 30 x 76



Piston Özellikleri
(Piston Features)

Segman Taşıyıcı
(Ring Carrier)
Çelik Plaka
(Steel Strut)
Soğutma Kanallı
(Coolin Gallery)
Yağ Püskürtme Oyuğu
(Oil Jet Cut-out)
Gözarası Düz
(Flat Eye Gap)

Piston Parça No
(Piston Part No)

87-849100-02
87-71335-STD

87-849107-02
87-71335-050

87-849100-03
87-71335-STD1
- 0,20 MM Kısa (Short)

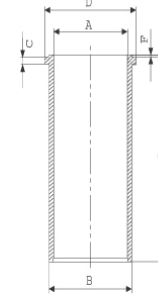
Segman Seti
(Ring Set)

06-849100-00-STD
06-849107-00 0,50 MM

2.000 NT ST
2.000 CR GOE
3.000 NT ST

Silindir Gömleği
(Liner)

14-049800-00-D
B : 96.800
L : 168.000
D : 102.550
C : 2.530
F : 0.600



Dış Yüzeyi
Fosfat Kaplı
(Outer Surface
Phosphate Coated)

Silindir Kit
(Assembly Set)

Piston - Blok Montaj
Yüksekliği
(Piston - Block
Assembly Height)

+ 0,20 / + 0,35





KIA - Ø 94,545

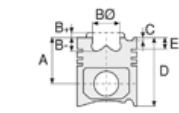
87-71344-STD



Motor Özellikleri
(Engine Specifications)

İmalatçı (Manufacturer):
KIA
Çap (Diameter): Ø 94,545
FM Grup No: 4606

J20 HC
4 Sil. Dizel 2665cc
BONGO 2.7, PREGIO
1997....



Piston Ölçüleri
(Piston Dimensions)

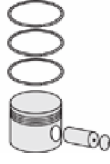
A : 50.000
B- : 2.000
D : 81.650
E : 12.800

Pim: 30 x 76



Piston Özellikleri
(Piston Features)

Segman Taşıyıcı
(Ring Carrier)
Çelik Plaka
(Steel Strut)
Yağ Püskürtme Oyuğu
(Oil Jet Cut-out)
Gözarası Konik
(Conical Eye Gap)



Piston Parça No
(Piston Part No)

87-861900-02
87-71344-STD

87-861907-02
87-71344-050

87-861900-03
87-71344-STD1
0,20 mm Kısa (Short)



Segman Seti
(Ring Set)

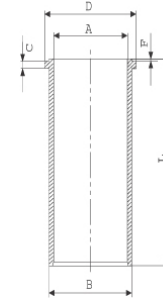
06-861900-00-STD
06-861907-00 0,50 mm

2.000 CRP KVI
2.000 CRP IKA
3.000 CRP STD



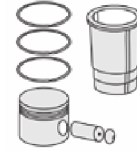
Silindir Gömleği
(Liner)

14-049480-00-D
B : 97.580
L : 167.600
D : 104.400
C : 3.800
F : 0.500

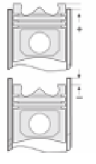


14-049481-00-D
B : 98.080
L : 167.600
D : 104.900
C : 4.300
F : 0.500

Dış Çap 0,50 mm Farklı
(Outer Diameter
0,50 mm Different)



Silindir Kit
(Assembly Set)



Piston - Blok Montaj
Yüksekliği
(Piston - Block
Assembly Height)

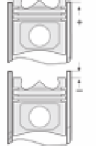
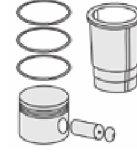
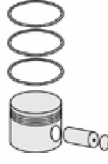
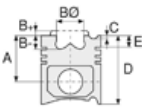
+ 0,30 / + 0,40





KIA - Ø 100

87-71342-STD



Motor Özellikleri
(Engine Specifications)

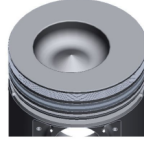
İmalatçı (Manufacturer):
KIA
Çap (Diameter): Ø 100
FM Grup No: 4607

4 Sil. Dizel
K 3500 KHVD 115 AO
KAMYON, KOBRA

Piston Ölçüleri
(Piston Dimensions)

A : 58.000
B- : 17.200
BØ : 55.000
BX : 4.500
BY : 1.550
D : 105.000
E : 16.000

Pim: 34 x 81,9



Piston Özellikleri
(Piston Features)

Segman Taşıyıcı
(Ring Carrier)
Çelik Plaka
(Steel Strut)
Gözarası Konik
(Conical Eye Gap)

Piston Parça No
(Piston Part No)

87-253500-02
87-71342-STD

Segman Seti
(Ring Set)

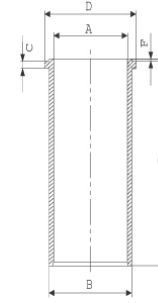
06-253500-00-STD

2.500 CRP KV1
2.000 CRP STD
4.500 CRP STD

Silindir Gömleği
(Liner)

14-048520-10-D

B : 103.600
L : 193.500
D : 108.050
C : 3.800
F : 1.000



Silindir Kit
(Assembly Set)

Piston - Blok Montaj
Yüksekliği
(Piston - Block
Assembly Height)

0 / + 0,12

