



KUBOTA - Ø 78

87-73123-STD



**Motor Özellikleri**  
(Engine Specifications)

İmalatçı (Manufacturer):  
KUBOTA  
Çap (Diameter): Ø 78  
FM Grup No: 88006

**D 1105-V1505**

3 Sil. Dizel 1123cc  
18.5 KW/25.2 PS  
CARRIER (Maxima 1300),  
CARRIER (Vektör 1550),  
ENDUSTRIYEL,  
İŞ MAKINASI, TRAKTÖR  
(Industrial,  
Construction Machine,  
Tractor)

**Piston Ölçüleri**  
(Piston Dimensions)

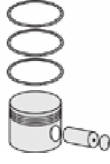
A : 36.400  
C1 : 0.850  
D : 69.600  
E : 9.300

Pim: 22 x 60



**Piston Özellikleri**  
(Piston Features)

Segman Taşıyıcı  
(Ring Carrier)  
Çelik Plaka  
(Steel Strut)  
Yağ Püskürtme Oyuğu  
(Oil Jet Cut-out)  
Gözarası Düz  
(Flat Eye Gap)



**Piston Parça No**  
(Piston Part No)

87-871900-02  
87-73123-STD  
  
87-871907-02  
87-73123 0,50



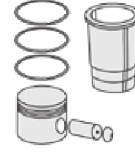
**Segman Seti**  
(Ring Set)

06-871900-00 STD  
06-871907-00 0,50

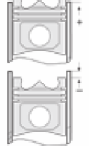
2.000 NT ST  
1.500 CR GOE  
4.000 NT ST



**Silindir Gömleği**  
(Liner)



**Silindir Kit**  
(Assembly Set)



**Piston - Blok Montaj**  
Yüksekliği  
(Piston - Block  
Assembly Height)





KUBOTA - Ø 87

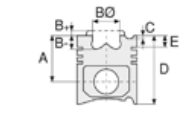
87-73130-STD



**Motor Özellikleri**  
(Engine Specifications)

İmalatçı (Manufacturer):  
KUBOTA  
Çap (Diameter): Ø 87  
FM Grup No: 88005

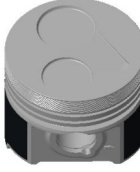
**V2203**  
4 Sil. Dizel 2197cc  
35,9 KW-48,8 PS  
Tier 4  
L4100DT TRK,  
03M SERİSİ,  
18D-7E (HYUNDAI),  
FORKLİFT, KX121-3S,  
S 450 LOADERS  
(BOBCAT)



**Piston Ölçüleri**  
(Piston Dimensions)

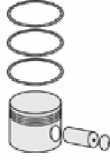
A : 43.500  
C1 : 1.190  
D : 80.000  
E : 12.800

Pim: 24 x 64



**Piston Özellikleri**  
(Piston Features)

Segman Taşıyıcı  
(Ring Carrier)  
Çelik Plaka  
(Steel Plate)  
Gözarası düz  
(Flat Eye Gap)






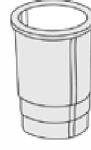
**Piston Parça No**  
(Piston Part No)

87-871500-02  
87-73130-STD

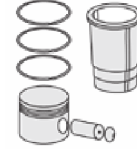


**Segman Seti**  
(Ring Set)

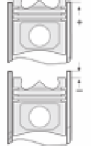
06-871500-00 STD  
2.050  NT ST  
1.970  P GOE  
5.000  CRP GOE



**Silindir Gömleği**  
(Liner)



**Silindir Kit**  
(Assembly Set)



**Piston - Blok Montaj**  
Yüksekliği  
(Piston - Block  
Assembly Height)

