



LOMBARDINI - Ø 65

06-803800-00-STD

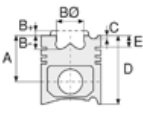


Motor Özellikleri
(Engine Specifications)

İmalatçı (Manufacturer):
LOMBARDINI
Çap (Diameter): Ø 65
FM Grup No: 5201

LAP 205

1 Sil. Benzinli
3/4,5/5 Kw (4,5/6/7 PS)
Gazlı-Benzinli
(Gas-Gasoline)
Su Motorları
(Water Engines)



Piston Ölçüleri
(Piston Dimensions)

Piston Özellikleri
(Piston Features)






Piston Parça No
(Piston Part No)



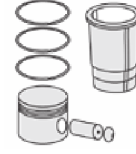
Segman Seti
(Ring Set)

06-803800-00-STD
06-803807-00 0,50 mm
06-803811-00 1,00 mm

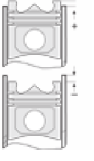
2.000  P STD
2.000  P STD
4.000  P STD



Silindir Gömleği
(Liner)



Silindir Kit
(Assembly Set)



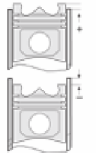
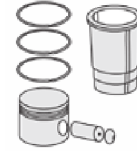
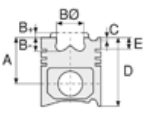
Piston - Blok Montaj
Yüksekliği
(Piston - Block
Assembly Height)





LOMBARDINI - Ø 85

87-71468-STD



Motor Özellikleri
(Engine Specifications)

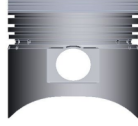
İmalatçı (Manufacturer):
LOMBARDINI
Çap (Diameter): Ø 85
FM Grup No: 5211

LD 510
1 Sil. Dizel 10 PS
Su Motorları
(Water Engines)
1975....

Piston Ölçüleri
(Piston Dimensions)

A : 47.000
B- : 16.500
BØ : 85.000
BX : 1.600
BY : 1.700
D : 84.900
E : 12.000

Pim: 23 x 64



Piston Özellikleri
(Piston Features)

Gözarası Düz
(Flat Eye Gap)

Piston Parça No
(Piston Part No)

87-267400-22
87-71468-STD
87-267407-22
87-71468 050
87-267411-22
87-71468 100

87-267400-32
87-71468-STD A
87-267407-32
87-71468 050 A
87-267411-32
87-71468 100 A

Segman Seti
(Ring Set)

06-267400-00-STD
06-267407-00 0,50 mm
06-267411-00 1,00 mm
2.000 CRP STD
2.000 P STD
2.000 P STD
4.000 P STD

06-267400-10-STD
06-267407-10 0,50 mm
06-267411-10 1,00 mm
2.000 CRP STD
2.000 P STD
2.000 P STD
4.000 CRP STD

Silindir Gömleği
(Liner)

Silindir Kit
(Assembly Set)

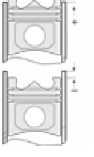
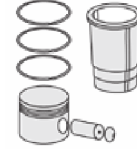
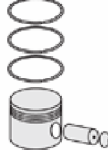
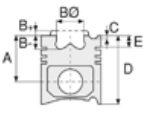
Piston - Blok Montaj
Yüksekliği
(Piston - Block
Assembly Height)





LOMBARDINI - Ø 85

87-71474-STD



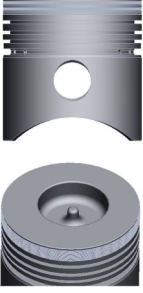
Motor Özellikleri
(Engine Specifications)

İmalatçı (Manufacturer):
LOMBARDINI
Çap (Diameter): Ø 85
FM Grup No: 5206

LDA 450, 455
1 Sil. Dizel 454cc
7,5 Kw (10 PS)
Su Motorları
(Water Engines)

Piston Ölçüleri
(Piston Dimensions)

A : 52.000
B- : 14.500
BØ : 43.000
BX : 1.500
BY : 2.000
D : 90.000
E : 14.000
Pim: 23 x 63,1



Piston Özellikleri
(Piston Features)

Gözarası Düz
(Flat Eye Gap)

Piston Parça No
(Piston Part No)

87-267400-02
87-71474-STD
87-267407-02
87-71474 050
87-267411-02
87-71474 100

Segman Seti
(Ring Set)

06-267400-00-STD
06-267407-00 0,50 mm
06-267411-00 1,00 mm
2.000 CRP STD
2.000 P STD
2.000 P STD
4.000 P STD

Silindir Gömleği
(Liner)

Silindir Kit
(Assembly Set)

Piston - Blok Montaj
Yüksekliği
(Piston - Block
Assembly Height)





LOMBARDINI - Ø 86

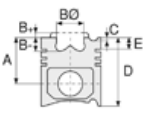
06-866700-00-STD



Motor Özellikleri
(Engine Specifications)

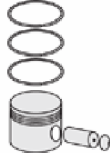
İmalatçı (Manufacturer):
LOMBARDINI
Çap (Diameter): Ø 86
FM Grup No: 5207

6 LD 400
1 Sil. Dizel 395cc
Su Motorları
(Water Engines)
1974....



Piston Ölçüleri
(Piston Dimensions)

Piston Özellikleri
(Piston Features)



Piston Parça No
(Piston Part No)



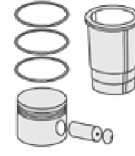
Segman Seti
(Ring Set)

06-866700-00-STD
06-866707-00 0,50 mm
06-866711-00 1,00 mm

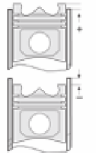
2.000  CRP IKA
2.000  P STD
4.000  P STD



Silindir Gömleği
(Liner)



Silindir Kit
(Assembly Set)



Piston - Blok Montaj
Yüksekliği
(Piston - Block
Assembly Height)





LOMBARDINI - Ø 95

06-865800-00-STD



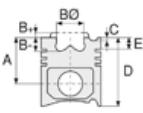
Motor Özellikleri
(Engine Specifications)

İmalatçı (Manufacturer):
LOMBARDINI
Çap (Diameter): Ø 95
FM Grup No: 5209

720
1 Sil. Dizel
Tarım Makinaları
(Agricultural Machinery)

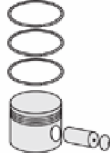
914
1 Sil. Dizel
Tarım Makinaları
(Agricultural Machinery)

L 20
1 Sil. Dizel
Tarım Makinaları
(Agricultural Machinery)



Piston Ölçüleri
(Piston Dimensions)

Piston Özellikleri
(Piston Features)



Piston Parça No
(Piston Part No)



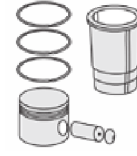
Segman Seti
(Ring Set)

06-865800-00-STD
06-865807-00 0,50 mm
06-865811-00 1,00 mm

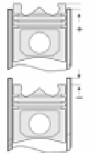
2.500 CRP IKA
2.500 P STD
2.500 P STD
5.000 P STD



Silindir Gömleği
(Liner)



Silindir Kit
(Assembly Set)



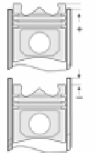
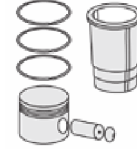
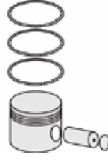
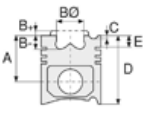
Piston - Blok Montaj
Yüksekliği
(Piston - Block
Assembly Height)





LOMBARDINI - Ø 95

87-71475-STD



Motor Özellikleri
(Engine Specifications)

İmalatçı (Manufacturer):
LOMBARDINI
Çap (Diameter): Ø 95
FM Grup No: 5208

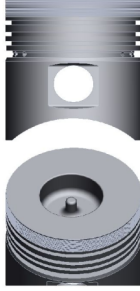
LDA 96/97
1 Sil. Dizel 638cc
7,5 Kw (10 PS)

Yağmurlama
Motopompu (Sprinkler
Motor Pump)

Piston Ölçüleri
(Piston Dimensions)

A : 65.000
B- : 20.000
BØ : 44.000
BX : 1.800
BY : 1.800
D : 108.000
E : 17.000

Pim: 28 x 78



Piston Özellikleri
(Piston Features)

Gözarası Düz
(Flat Eye Gap)

Piston Parça No
(Piston Part No)

87-267500-02
87-71475-STD
87-267507-02
87-71475 050
87-267511-02
87-71475 100

Segman Seti
(Ring Set)

06-267500-00-STD
06-267507-00 0,50 mm
06-267511-00 1,00 mm
3.000 CRP STD
3.000 P STD
3.000 P STD
5.000 P STD

Silindir Gömleği
(Liner)

Silindir Kit
(Assembly Set)

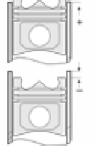
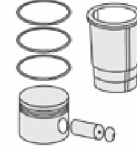
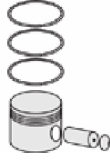
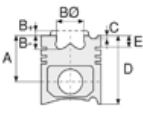
Piston - Blok Montaj
Yüksekliği
(Piston - Block
Assembly Height)





LOMBARDINI - Ø 102

87-71478-STD



Motor Özellikleri
(Engine Specifications)

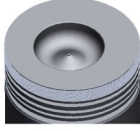
İmalatçı (Manufacturer):
LOMBARDINI
Çap (Diameter): Ø 102
FM Grup No: 5210

4 LD 820
1 Sil. Dizel 837cc
12 Kw (17 PS) 17:1
BAŞAK TRAKTÖR 17
1974....

Piston Ölçüleri
(Piston Dimensions)

A : 60.000
B- : 18.000
BØ : 53.000
BX : 2.500
BY : 2.500
D : 102.000
E : 17.000

Pim: 28 x 80



Piston Özellikleri
(Piston Features)

Gözarası Düz
(Flat Eye Gap)

Piston Parça No
(Piston Part No)

87-267700-02
87-71478-STD
87-267707-02
87-71478 050
87-267711-02
87-71478 100

Segman Seti
(Ring Set)

06-267700-00-STD
06-267707-00 0,50 mm
06-267711-00 1,00 mm
3.000 CRP STD
2.500 P STD
2.500 P STD
5.000 P STD

Silindir Gömleği
(Liner)

Silindir Kit
(Assembly Set)

Piston - Blok Montaj
Yüksekliği
(Piston - Block
Assembly Height)

