



Motor Özellikleri
(Engine Specifications)

İmalatçı (Manufacturer):
MASSEY FERGUSON
Çap (Diameter): Ø 91,48
FM Grup No: 5601

A 3.152

3 Sil. Dizel 2500cc
27/31 Kw (37/42 PS) 17,4:1
Etekte Segman Var
(There Is a Segment
In The Skirt)
1972 - 2000

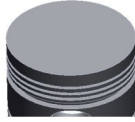
A 4.203

4 Sil. Dizel 3335cc
41 Kw (56 PS) 17,4:1
Etekte Segman Var
(There Is a Segment
In The Skirt)
TRAKTOR MF 35/65
1962 - 1988

Piston Ölçüleri
(Piston Dimensions)

A : 57.200
D : 107.900
E : 13.800

Pim: 31,75 x 75,3



Piston Özellikleri
(Piston Features)

Gözarası Düz
(Flat Eye Gap)

Piston Parça No
(Piston Part No)

87-314600-02
87-71729-STD A

87-314600-22
87-71729-STD B

Segman Seti
(Ring Set)

06-314600-20-STD

2.385 CRP KV1
2.385 P GOE
3.160 P GOE
6.350 CRP GOE
6.350 P GOE

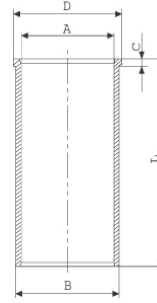
06-314600-50-STD

2.385 CRP IKA
2.385 P GOE
3.160 P GOE
6.350 ST
6.350 P STD

Silindir Gömleği
(Liner)

14-025830-00-D

B : 93.810
L : 216.000
D : 96.660
C : 5.000



14-025831-10-D

B : 94.310
L : 216.000
D : 96.660
C : 6.000

Dış Çap 0,50mm Farklı
(Outer Diameter
0,50 mm Different)

14-025832-10-D

B : 94.810
L : 216.000
D : 97.660
C : 6.000

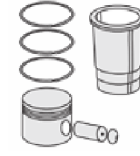
Dış Çap 1,00mm Farklı
(Outer Diameter
1,00 mm Different)

14-025833-10-D

B : 95.310
L : 216.000
D : 98.160
C : 6.250

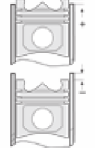
Dış Çap 1,50mm Farklı
(Outer Diameter
1,50 mm Different)

Silindir Kit
(Assembly Set)



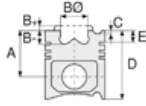
Piston - Blok Montaj
Yüksekliği
(Piston - Block
Assembly Height)

- 0,13 / 0





Motor Özellikleri
(Engine Specifications)



Piston Ölçüleri
(Piston Dimensions)



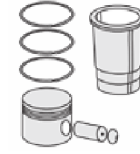
Piston Parça No
(Piston Part No)



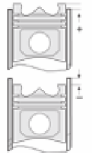
Segman Seti
(Ring Set)



Silindir Gömleği
(Liner)



Silindir Kit
(Assembly Set)

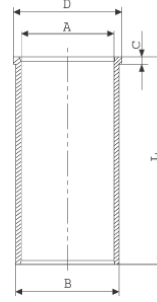


Piston - Blok Montaj
Yüksekliği
(Piston - Block
Assembly Height)

14-025834-10-D
B : 95.810
L : 216.000
D : 98.660
C : 6.500

Dış Çap 1,20mm Farklı
(Outer Diameter
1,20 mm Different)

14-026450-00-D
B : 93.820
L : 216.000
D : 96.950
C : 5.000



Geniş Flanşlı
(Wide Flange)

14-026451-10-D
B : 93.820
L : 216.000
D : 96.950
C : 5.500

Dış Çap 0,50mm Farklı
(Outer Diameter
0,50 mm Different)

14-026452-10-D
B : 94.820
L : 216.000
D : 97.950
C : 6.000

Dış Çap 1,00mm Farklı
(Outer Diameter
1,00 mm Different)

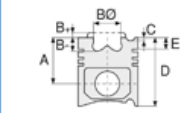




Motor Özellikleri
(Engine Specifications)

İmalatçı (Manufacturer):
MASSEY FERGUSON
Çap (Diameter): Ø 95
FM Grup No: 5615

SJ 327E
3 Sil. Dizel 50-58 HP
MF 240S, MF 2615,
MF 2620
2013....



Piston Ölçüleri
(Piston Dimensions)

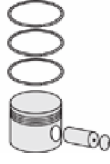
A : 61.750
B- : 22.500
BØ : 47.750
BX : 4.200
BY : 1.050
C1 : 1.600
D : 99.800
E : 9.500

Pim: 31,75 x 67,8



Piston Özellikleri
(Piston Features)

Segman Taşıyıcı
(Ring Carrier)
Gözarası Konik
(Conical Eye Gap)



Piston Parça No
(Piston Part No)

87-882000-02
87-73251-STD



Segman Seti
(Ring Set)

06-882000-00-STD

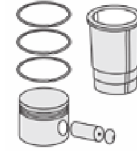
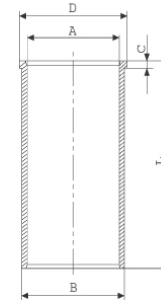
3.000 CR KV1
2.000 P F14
4.000 CR GOE



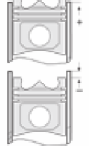
Silindir Gömleği
(Liner)

14-022380-00-D

B : 98.000
L : 216.000
D : 102.600
C : 4.000



Silindir Kit
(Assembly Set)



Piston - Blok Montaj
Yüksekliği
(Piston - Block
Assembly Height)

0,150 / 0,160

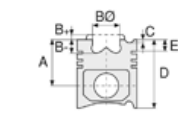




Motor Özellikleri
(Engine Specifications)

İmalatçı (Manufacturer):
VOLVO-MASSEY
FERGUSON
Çap (Diameter): Ø 98,48
FM Grup No: 5603

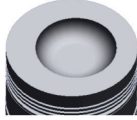
AD 4.236
4 Sil. Dizel 3846cc 43,5/59
Kw (59/80 PS) 16:1
SERIE MF 87/95/99/
175/177/187/
1965 - 1982



Piston Ölçüleri
(Piston Dimensions)

A : 70.680
B - : 20.710
BØ : 61.000
BX : 3.180
D : 121.480
E : 21.450

Pim : 34,925 x 84,1



Piston Özellikleri
(Piston Features)

Gözarası Düz
(Flat Eye Gap)



Piston Parça No
(Piston Part No)

87-315007-22
87-71736-050
87-315000-22
87-71736-STD
87-315000-23
87-71736-STD1
0,43 mm Kısa (Short)
87-315000-24
87-71736-STD2
0,20 mm Kısa (Short)



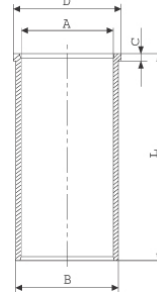
Segman Seti
(Ring Set)

06-315000-10-STD
06-315007-10-0,50 mm
2.385 CRP KV1
2.385 P STD
2.385 P STD
6.355 CRP STD
6.335 P STD



Silindir Gömleği
(Liner)

14-021980-00-D
B : 104.280
L : 226.440
D : 107.380
C : 3.800



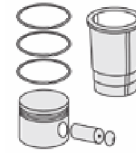
14-021981-00-D
B : 104.780
L : 226.440
D : 107.400
C : 4.000

Dış Çap 0,50 mm. farklı
(Outside Diameter
0.50mm Different)

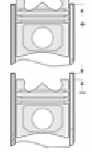
14-021982-00-D
B : 105.280
L : 226.440
D : 107.420
C : 4.250

Dış Çap 1,00 mm. farklı
(Outside Diameter
1.00mm Different)

14-045820-10-D
B : 103.330
L : 227.280
D : 106.420
C : 3.800
F : 0.900



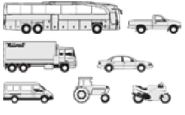
Silindir Kit
(Assembly Set)



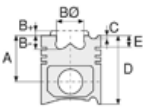
Piston - Blok Montaj
Yüksekliği
(Piston - Block
Assembly Height)

+0,38 / +0,53

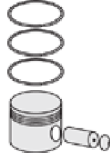




Motor Özellikleri
(Engine Specifications)



Piston Ölçüleri
(Piston Dimensions)



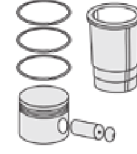
Piston Parça No
(Piston Part No)



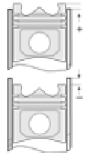
Segman Seti
(Ring Set)



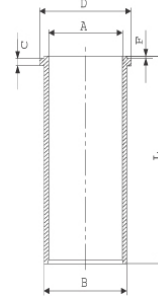
Silindir Gömleği
(Liner)



Silindir Kit
(Assembly Set)



Piston - Blok Montaj
Yüksekliği
(Piston - Block
Assembly Height)



14-045821-10-D
B : 103.830
L : 227.280
D : 106.920
C : 4.300
F : 0.900

Dış Çap 0,50 mm. farklı
(Outside Diameter
0.50mm Different)

14-045822-10-D
B : 104.330
L : 227.280
D : 107.420
C : 4.800
F : 0.900

Dış Çap 1,00 mm. farklı
(Outside Diameter
1.00mm Different)

14-045823-10-D
B : 104.830
L : 227.280
D : 107.920
C : 5.300
F : 0.900





MASSEY FERGUSON - Ø 98,48

87-71738-STD



Motor Özellikleri
(Engine Specifications)

İmalatçı (Manufacturer):
MASSEY FERGUSON
Çap (Diameter): Ø 98,48
FM Grup No: 5605

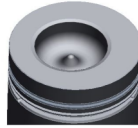
A 6.354.4

6 Sil. Dizel 5794cc
67-84 Kw (91-118 PS) 16:1
24.530, MF 24/33/82/
85/95, MF 2625/2640/
2645/2670/2675/30,
MF 399/520/530/542/
550, MF 90/95/1100/
1114/1200/2620
1971 - 1989

Piston Ölçüleri
(Piston Dimensions)

A : 70.500
B - : 26.050
BØ : 54.100
BX : 3.200
D : 121.300
E : 21.600

Pim: 34,925 x 84,1



Piston Özellikleri
(Piston Features)

Segman Taşıyıcı
(Ring Carrier)
Çelik Plaka
(Steel Strut)
Gözarası Düz
(Flat Eye Gap)

Piston Parça No
(Piston Part No)

87-318900-22
87-71738-STD
87-318900-23
87-71738-STD1
0,58 mm Kısa (Short)

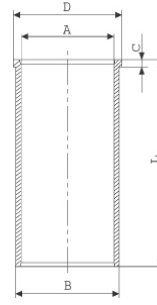
Segman Seti
(Ring Set)

06-318900-10-STD
2.385 CRP KVI
2.385 P STD
4.747 CRP STD



Silindir Gömleği
(Liner)

14-021980-00-D
B : 104.280
L : 226.440
D : 107.380
C : 3.800



14-021981-00-D
B : 104.780
L : 226.440
D : 107.400
C : 4.000

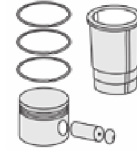
Dış Çap 0,50 mm Farklı
(Outer Diameter
0,50 mm Different)

14-021982-00-D
B : 105.280
L : 226.440
D : 107.420
C : 4.250

Dış Çap 1,00 mm Farklı
(Outer Diameter
1,00 mm Different)

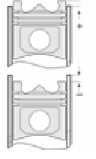
14-045820-10-D
B : 103.330
L : 227.280
D : 106.420
C : 3.800
F : 0.900

Silindir Kit
(Assembly Set)



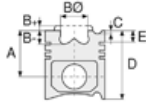
Piston - Blok Montaj
Yüksekliği
(Piston - Block
Assembly Height)

0 / + 0,18





Motor Özellikleri
(Engine Specifications)



Piston Ölçüleri
(Piston Dimensions)



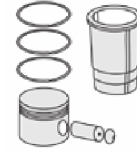
Piston Parça No
(Piston Part No)



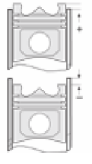
Segman Seti
(Ring Set)



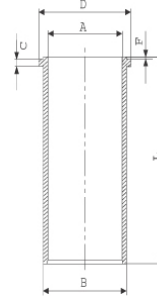
Silindir Gömleği
(Liner)



Silindir Kit
(Assembly Set)



Piston - Blok Montaj
Yüksekliği
(Piston - Block
Assembly Height)



14-045821-10-D
B : 103.830
L : 227.280
D : 106.920
C : 4.300
F : 0.900

Dış Çap 0,50mm Farklı
(Outer Diameter
0,50 mm Different)

14-045822-10-D
B : 104.330
L : 227.280
D : 107.420
C : 4.800
F : 0.900

Dış Çap 1,00mm Farklı
(Outer Diameter
1,00 mm Different)

14-045823-10-D
B : 104.830
L : 227.280
D : 107.920
C : 5.300
F : 0.900





MASSEY FERGUSON - Ø 98,48

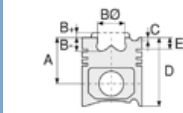
87-71739-STD



Motor Özellikleri
(Engine Specifications)

İmalatçı (Manufacturer):
MASSEY FERGUSON
Çap (Diameter): Ø 98,48
FM Grup No: 5604

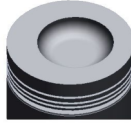
A 212
4 Sil. Dizel 3475cc
44/47 Kw (60/64 PS) 16:1
MF 50/5ORA/165/
186/R 7000
1969....



Piston Ölçüleri
(Piston Dimensions)

A : 76.500
B- : 19.200
BØ : 59.600
BX : 4.000
D : 127.300
E : 21.000

Pim: 34,925 x 84,1



Piston Özellikleri
(Piston Features)

Gözarası Düz
(Flat Eye Gap)



Piston Parça No
(Piston Part No)

87-883800-22
87-71739-STD



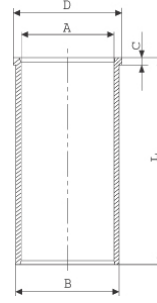
Segman Seti
(Ring Set)

06-883800-10-STD
2.385 CRP KVI
2.385 P STD
2.385 P STD
6.350 CRP STD



Silindir Gömleği
(Liner)

14-021980-00-D
B : 104.280
L : 226.440
D : 107.380
C : 3.800



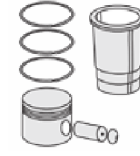
14-021981-00-D
B : 104.780
L : 226.440
D : 107.400
C : 4.000

Dış Çap 0,50 mm Farklı
(Outer Diameter
0,50 mm Different)

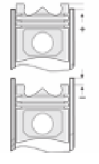
14-021982-00 D
B : 105.280
L : 226.440
D : 107.420
C : 4.250

Dış Çap 1,00 mm Farklı
(Outer Diameter
1,00 mm Different)

14-045820-10 D
B : 103.330
L : 227.280
D : 106.420
C : 3.800
F : 0.900



Silindir Kit
(Assembly Set)



Piston - Blok Montaj
Yüksekliği
(Piston - Block
Assembly Height)

+0,38/+0,53



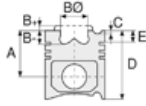


MASSEY FERGUSON - Ø 98,48

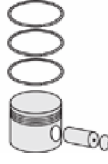
87-71739-STD



Motor Özellikleri
(Engine Specifications)



Piston Ölçüleri
(Piston Dimensions)



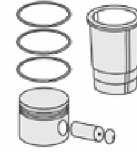
Piston Parça No
(Piston Part No)



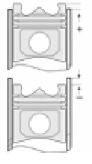
Segman Seti
(Ring Set)



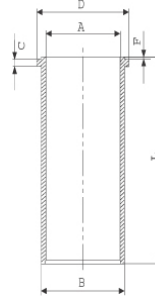
Silindir Gömleği
(Liner)



Silindir Kit
(Assembly Set)



Piston - Blok Montaj
Yüksekliği
(Piston - Block
Assembly Height)



14-045821-10 D
B: 103.830
L: 227.280
D: 106.920
C: 4.300
F: 0.900

Dış Çap 0,50mm Farklı
(Outer Diameter
0,50 mm Different)

14-045822-10 D
B: 104.330
L: 227.280
D: 107.420
C: 4.800
F: 0.900

Dış Çap 1,00mm Farklı

14-045823-10 D
B: 104.830
L: 227.280
D: 107.920
C: 5.300
F: 0.900





MASSEY FERGUSON - Ø 101,054

87-71753-STD



Motor Özellikleri
(Engine Specifications)

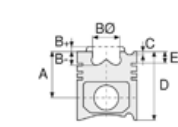
İmalatçı (Manufacturer):
MASSEY FERGUSON
Çap (Diameter): Ø 101,054
FM Grup No: 5606

4.248

4 Sil. Dizel 4064cc 61
Kw (83 PS) 16:1
PERKINS İLE
ORTAK MOTOR
(With Perkins Common
Engine)
DT 8000,
MAHDRESCHER 307,506,
MF 11/178/185/186/188,
MF 175/345/840/920,
MF 230 SS, MF 487,
MF 85/178/185/186/18,
R8000, RADLADER MF
11/33/300/350/188-
1969 - 1989

4.248.2

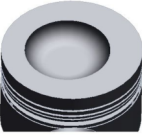
4 Sil. Dizel 4064cc
60 KW(82 PS)
PERKINS İLE
ORTAK MOTOR
(With Perkins Common
Engine)
MF 175/345/840/920
1969 - 1989



Piston Ölçüleri
(Piston Dimensions)

A : 70.200
B- : 21.000
BØ : 61.450
BX : 3.200
D : 121.000
E : 20.970

Pim : 34,925 x 84,1



Piston Özellikleri
(Piston Features)

Çelik Plaka
(Steel Strut)
Gözarası Düz
(Flat Eye Gap)



Piston Parça No
(Piston Part No)

87-318000-02
87-71753-STD

87-318000-03
87-71753-STD1
0.28 mm kısa



Segman Seti
(Ring Set)

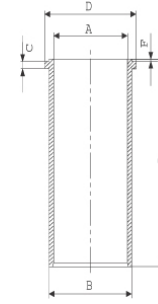
06-318000-10-STD

2.385 CRP İKA
2.385 P STD
2.385 P STD
6.335 CRP STD

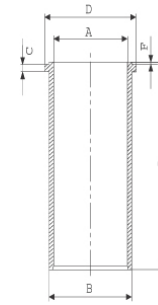


Silindir Gömleği
(Liner)

14-040280-00-DH
B : 104.230
L : 227.300
D : 107.400
C : 3.800
F : 0.850

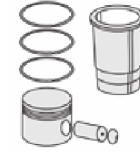


14-041140-00-D
B : 104.350
L : 227.280
D : 107.440
C : 3.800
F : 0.900

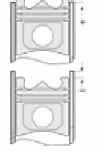


14-041141-10-D
B : 104.850
L : 227.280
D : 107.440
C : 3.800
F : 0.900

Dış Çap 0,50mm Farklı
(Outside Diameter
0.50mm Different)



Silindir Kit
(Assembly Set)



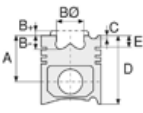
Piston - Blok Montaj
Yüksekliği
(Piston - Block
Assembly Height)

+ 0,08 / + 0,25

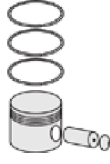




Motor Özellikleri
(Engine Specifications)



Piston Ölçüleri
(Piston Dimensions)



Piston Parça No
(Piston Part No)

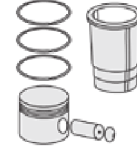
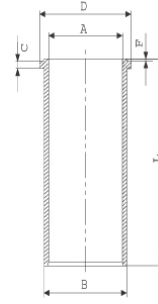


Segman Seti
(Ring Set)

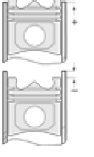


Silindir Gömleği
(Liner)

14-041610-00-D
B : 104.280
L : 227.280
D : 107.380
C : 3.800
F : 0.900

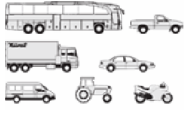


Silindir Kit
(Assembly Set)



Piston - Blok Montaj
Yüksekliği
(Piston - Block
Assembly Height)

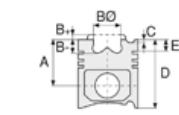




Motor Özellikleri
(Engine Specifications)

İmalatçı (Manufacturer):
MASSEY FERGUSON
Çap (Diameter): Ø 108
FM Grup No: 5618

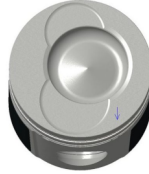
620 DWBAE Euro 3
6 Sil. Dizel 6600cc
140 KW-190 PS
8240
2002..



Piston Ölçüleri
(Piston Dimensions)

A : 70.650
B - : 17.900
BØ : 60.000
BX : 5.500
BY : 3.000
C1 : 0.800
D : 106.600
E : 13.300

Pim: 40 x 89



Piston Özellikleri
(Piston Features)

Segman Taşıyıcı
(Ring Carrier)
Gözarası Konik
(Conical Eye Gap)






Piston Parça No
(Piston Part No)

87-882500-02
87-72996-STD

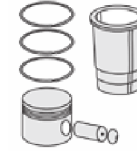


Segman Seti
(Ring Set)

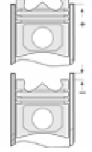
06-882500-00 STD
3.000  CK KV1
2.500  P F14
4.000  CR STD



Silindir Gömleği
(Liner)



Silindir Kit
(Assembly Set)



Piston - Blok Montaj
Yüksekliği
(Piston - Block
Assembly Height)





MASSEY FERGUSON - Ø 108

87-73250-STD



Motor Özellikleri
(Engine Specifications)

İmalatçı (Manufacturer):
MASSEY FERGUSON
Çap (Diameter): Ø 108
FM Grup No: 5616

620/634 DWBAE

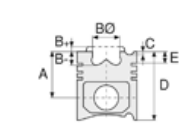
Euro 3

4 Sil. Dizel 6600cc
140 KW-190 PS
MF 8240, Valmet Tractors
2002...

620/634 DWBAE

Euro 3

4 Sil. Dizel 6600cc 140
KW-190 PS MF 8240,
Valmet Tractors
2002...



Piston Ölçüleri
(Piston Dimensions)

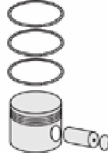
A : 70.650
B- : 19.000
BØ : 64.500
BX : 5.000
BY : 3.300
C1 : 0.800
D : 106.800
E : 13.300

Pim : 40 x 89



Piston Özellikleri
(Piston Features)

Segman Taşıyıcı
(Ring Carrier)
Gözarası Konik
(Conical Eye Gap)



Piston Parça No
(Piston Part No)

87-888300-02
87-73250-STD



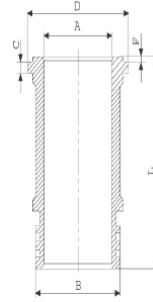
Segman Seti
(Ring Set)

06-888300-20-STD
3.000 CR KV1
2.500 P GOE
4.000 CR GOE

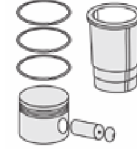


Silindir Gömleği
(Liner)

14-680130-00-WH
B : 117.000
L : 218.000
D : 131.750
C : 9.050
F : 0.900

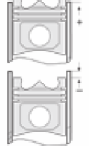


24-35051-90/0
1x116.00*3.50 FPM
2x116.00*3.50 EPDM



Silindir Kit
(Assembly Set)

89-888300-02-STD
89-73250-STD



Piston - Blok Montaj
Yüksekliği
(Piston - Block
Assembly Height)

