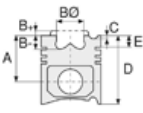




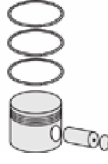
**Motor Özellikleri**  
(Engine Specifications)

İmalatçı (Manufacturer):  
MERCEDES BENZ LKW  
Çap (Diameter): Ø 75  
FM Grup No: 5903

**OM 366**  
1 Sil. Dizel  
HAVA KOMPRESORU  
(Air Compressor)



**Piston Ölçüleri**  
(Piston Dimensions)



**Piston Parça No**  
(Piston Part No)



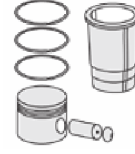
**Segman Seti**  
(Ring Set)

06-742500-00-STD

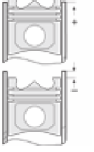
2.500 P STD  
2.500 P STD  
2.500 P STD  
4.000 P STD



**Silindir Gömleği**  
(Liner)



**Silindir Kit**  
(Assembly Set)



**Piston - Blok Montaj**  
Yüksekliği  
(Piston - Block  
Assembly Height)





MERCEDES BENZ LKW - Ø 77

06-165800-00-STD



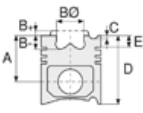
**Motor Özellikleri**  
(Engine Specifications)

İmalatçı (Manufacturer):  
MERCEDES BENZ LKW  
Çap (Diameter): Ø 77  
FM Grup No: 5904

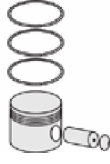
**OM 312**  
1 Sil. Dizel  
HAVA KOMPRESORU  
(Air Compressor)

**OM 321**  
1 Sil. Dizel  
HAVA KOMPRESORU  
(Air Compressor)

**OM 352**  
1 Sil. Dizel  
HAVA KOMPRESORU  
(Air Compressor)



**Piston Ölçüleri**  
(Piston Dimensions)







**Piston Parça No**  
(Piston Part No)



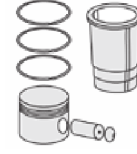
**Segman Seti**  
(Ring Set)

06-165800-00-STD  
06-165805-00-0,25 mm  
06-165807-00-0,50 mm

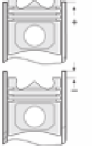
2.500  P STD  
2.500  P STD  
3.000  P STD  
4.000  P STD



**Silindir Gömleği**  
(Liner)



**Silindir Kit**  
(Assembly Set)



**Piston - Blok Montaj**  
Yüksekliği  
(Piston - Block  
Assembly Height)





MERCEDES BENZ LKW - Ø 80

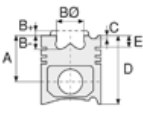
06-131900-00-STD



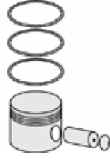
**Motor Özellikleri**  
(Engine Specifications)

İmalatçı (Manufacturer):  
MERCEDES BENZ LKW  
Çap (Diameter): Ø 80  
FM Grup No: 5905

**OM 355**  
1 Sil. Dizel  
HAVA KOMPRESORU  
(Air Compressor)



**Piston Ölçüleri**  
(Piston Dimensions)





**Piston Parça No**  
(Piston Part No)



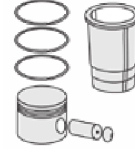
**Segman Seti**  
(Ring Set)

06-131900-00-STD

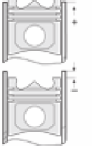
2.500  P STD  
2.500  P STD  
2.500  P STD  
4.000  P STD



**Silindir Gömleği**  
(Liner)



**Silindir Kit**  
(Assembly Set)



**Piston - Blok Montaj**  
Yüksekliği  
(Piston - Block  
Assembly Height)

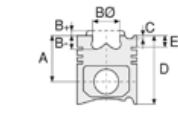




**Motor Özellikleri**  
(Engine Specifications)

İmalatçı (Manufacturer):  
MERCEDES BENZ LKW  
Çap (Diameter): Ø 85  
FM Grup No: 5998

**OM 457 LA EURO3**  
AXOR ÇEKİCİ (Axor Tractor)  
18.35 LS, AXOR ÇEKİCİ  
(Axor Tractor) 18.40 LS,  
HAVA KOMPRESÖRÜ  
(Air Compressor), O403



**Piston Ölçüleri**  
(Piston Dimensions)

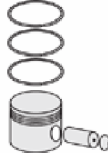
A : 33.300  
D : 59.150  
E : 3.400

Pim : 19,05 x 60



**Piston Özellikleri**  
(Piston Features)

Gözarası Düz  
(Flat Eye Gap)



**Piston Parça No**  
(Piston Part No)

87-877100-12  
87-72539-STDA

87-877105-12  
87-72539-025A

87-877107-12  
87-72539-050A

87-877109-12  
87-72539-0,75A

87-877111-12  
87-72539-100A

87-741200-02  
87-72539-STDB

87-741207-02  
87-72539-0,50B



**Segman Seti**  
(Ring Set)

06-877100-20-STD  
06-877105-20-0,25 mm  
06-877107-20-0,50 mm  
06-877109-20-0,75 mm  
06-877111-20-1,00 mm

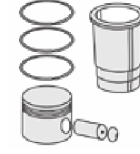
2.000 STD  
2.000 STD  
4.000 STD

06-741200-40-STD  
06-741207-40-0,50 mm

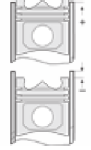
2.000 GOE  
2.000 GOE  
4.000 GOE



**Silindir Gömleği**  
(Liner)



**Silindir Kit**  
(Assembly Set)

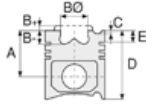


**Piston - Blok Montaj**  
Yüksekliği  
(Piston - Block  
Assembly Height)

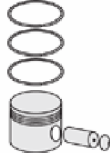




Motor Özellikleri  
(Engine Specifications)



Piston Ölçüleri  
(Piston Dimensions)



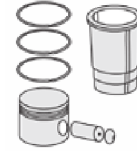
Piston Parça No  
(Piston Part No)



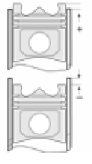
Segman Seti  
(Ring Set)



Silindir Gömleği  
(Liner)



Silindir Kit  
(Assembly Set)



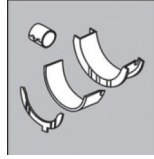
Piston - Blok Montaj  
Yüksekliği  
(Piston - Block  
Assembly Height)

**ALT TAKIM CONTA SETİ**  
(Undercarriage Gasket Set)



22-23336-10/0

**ANA YATAK**  
(MAIN BED)



H 075/7 STD

SPUTTER ALT PARÇA (Sputter Lower Part)

**EKSANTRİK YATAK**  
(ECCENTRIC BEARING)



N205/7

SEMI

**KOL YATAK**  
(ARM BED)



71-3893/6

STD, 0,25 MM

STUPPER ÜST PARÇA (Stupper Upper Part)

**SİL. KAPAK. CONTA**  
(CYLINDER HEAD GASKET)



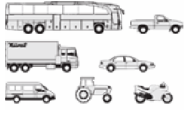
30-030171-00

**ÜST TAKIM CONTA SETİ**  
(Upper Set Gasket Set)



21-30171-00/0

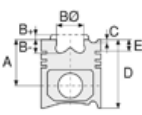




**Motor Özellikleri**  
(Engine Specifications)

İmalatçı (Manufacturer):  
MERCEDES BENZ LKW  
-IVECO LKW  
Çap (Diameter): Ø 86  
FM Grup No: 4074

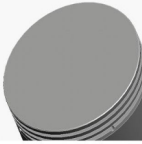
**CURSOR 10-13**  
190 E39, 190 E43,  
260 E39, 260 E43,  
440 E39, EUROTRAKKER,  
KOMPRESÖR  
(Compressor)



**Piston Ölçüleri**  
(Piston Dimensions)

A : 26.500  
D : 57.000  
E : 3.000

Pim : 18 x 63



**Piston Özellikleri**  
(Piston Features)

Gözarası Düz  
(Flat Eye Gap)



**Piston Parça No**  
(Piston Part No)

87-894500-02  
87-72860-STD

87-894505-02  
87-72860-0,25

87-894507-02  
87-72860-0,50

87-894509-02  
87-72860-0,75

87-894511-02  
87-72860-1,00



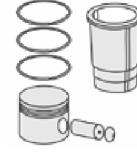
**Segman Seti**  
(Ring Set)

06-894500-00-STD  
06-894505-00-0,25  
06-894507-00-0,50 mm  
06-894509-00-0,75 mm  
06-894511-00-1,00 mm

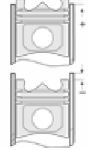
2.000 P GOE  
2.000 P GOE  
3.000 P GOE



**Silindir Gömleği**  
(Liner)



**Silindir Kit**  
(Assembly Set)



**Piston - Blok Montaj**  
Yüksekliği  
(Piston - Block  
Assembly Height)





**Motor Özellikleri**  
(Engine Specifications)

İmalatçı (Manufacturer):  
MERCEDES BENZ LKW  
Çap (Diameter): Ø 88  
FM Grup No: 5893

**OM 366 LA**  
HAVA KOMPRESÖRÜ  
(Air Compressor)

**Piston Ölçüleri**  
(Piston Dimensions)

A : 31.480  
D : 65.600  
E : 4.500  
Pim : 18 x 63



**Piston Özellikleri**  
(Piston Features)

Gözarası Düz  
(Flat Eye Gap)



**Piston Parça No**  
(Piston Part No)

87-742600-12  
87-72540-STDA  
87-742605-12  
87-72540-025A  
87-742607-12  
87-72540-050A



**Segman Seti**  
(Ring Set)

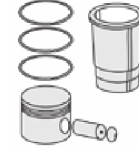
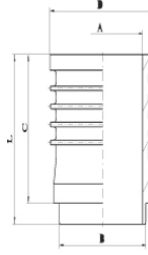
06-742600-30-STD  
06-742605-30-0,25 mm  
06-742607-30-0,50 mm

2.500 P GOE  
2.500 P GOE  
4.000 P GOE



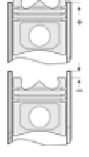
**Silindir Gömleği**  
(Liner)

14-000360-00  
B : 95.000  
L : 97.000  
D : 126.000  
C : 84.500



**Silindir Kit**  
(Assembly Set)

88-742600-12-STD  
88-72540-STDA



**Piston - Blok Montaj**  
Yüksekliği  
(Piston - Block  
Assembly Height)

87-742600-22  
87-72540-STDB  
87-742605-02  
87-72540-025  
87-742607-22  
87-72540-050B

06-742600-20-STD  
06-742605-20-0,25 mm  
06-742607-20-0,50 mm

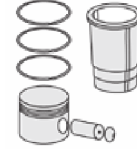
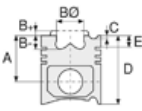
2.500 GOE  
2.500 GOE  
4.000 GOE

14-000360-00

88-742600-22-STD  
88-72540-STDB

14-000360-00





**Motor Özellikleri**  
(Engine Specifications)

İmalatçı (Manufacturer):  
MERCEDES BENZ LKW  
Çap (Diameter): Ø 90  
FM Grup No: 5934

OM 401/402/403/404/  
407/409

HAVA KOMP.  
(Air Compressor)

1 Sil. Dizel  
HAVA KOMPRESÖRÜ  
(Air Compressor)

**Piston Ölçüleri**  
(Piston Dimensions)

A : 35.000  
D : 57.500  
E : 4.000

Pim : 20 x 60



**Piston Özellikleri**  
(Piston Features)

Gözarası Düz  
(Flat Eye Gap)

**Piston Parça No**  
(Piston Part No)

87-404500-42  
87-70478-STDC

87-404507-42  
87-70478-050C

87-404511-42  
87-70478-100C

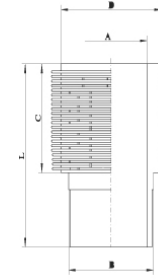
**Segman Seti**  
(Ring Set)

06-404500-20-STD  
06-404505-20-0,25 mm  
06-404507-20-0,50 mm  
06-404509-20-0,75 mm  
06-404511-20-1,00 mm

2.500 GOE  
2.500 GOE  
4.000 STD

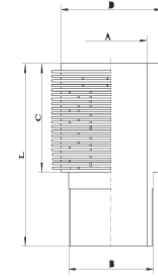
**Silindir Gömleği**  
(Liner)

14-000240-00-WH  
B : 95.000  
L : 104.000  
D : 140.000  
C : 94.000



Su Soğutmalı  
(Water Cooled)

14-000230-00-DH  
B : 95.000  
L : 104.000  
D : 127.000  
C : 94.000



Hava Soğutmalı  
(Air Cooled)

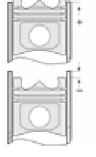
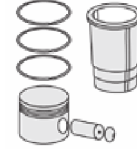
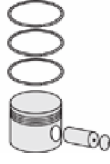
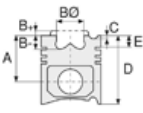
**Silindir Kit**  
(Assembly Set)

88-404500-52-STD  
88-70478-STDC

**Piston - Blok Montaj**  
Yüksekliği  
(Piston - Block  
Assembly Height)







**Motor Özellikleri**  
(Engine Specifications)

İmalatçı (Manufacturer):  
MERCEDES BENZ LKW  
Çap (Diameter): Ø 94  
FM Grup No: 5938

OM 314/352/352A/  
353.904/362/364/366

1 Sil. Dizel  
Motor No 470360-->  
Hava Kompresörü  
(Air Compressor)  
1966....

**Piston Ölçüleri**  
(Piston Dimensions)

A : 27.000  
D : 52.300  
E : 2.700  
Pim: 16 x 66



**Piston Özellikleri**  
(Piston Features)

Gözarası Düz  
(Flat Eye Gap)

**Piston Parça No**  
(Piston Part No)

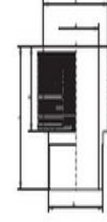
87-177400-02  
87-70484-STD  
87-177407-02  
87-70484 050

**Segman Seti**  
(Ring Set)

06-177400-20-STD  
06-177407-20 0,50 mm  
06-177411-20 1,00 mm  
2.500 STD  
2.500 STD  
2.500 STD

**Silindir Gömleği**  
(Liner)

14-000410-00-D  
B : 99.800  
L : 82.000  
D : 127.000  
C : 12.500



14-000410-00-D

**Silindir Kit**  
(Assembly Set)

88-177400-02-STD  
88-70484-STD

**Piston - Blok Montaj**  
Yüksekliği  
(Piston - Block  
Assembly Height)





MERCEDES BENZ LKW - Ø 97

06-166600-20-STD

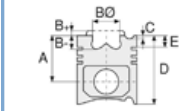


**Motor Özellikleri**  
(Engine Specifications)

İmalatçı (Manufacturer):  
MERCEDES BENZ LKW  
Çap (Diameter): Ø 97  
FM Grup No: 5944

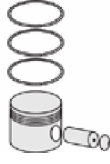
**OM 314**  
4 Sil. Dizel 3782cc  
53/63 Kw (72/85 PS) 17:1  
408, 508, 608,  
707, 709, 808,  
809, O 309  
1964 - 1981

**OM 352, OM 353**  
6 Sil. Dizel 5673cc  
69/96 Kw (94/131 PS) 17:1  
1013, 1113, 1213, 1313, 1317,  
1413, 1417, 1513, 1517, 1613,  
1617, 1713, 310, 323, 327,  
328, 329, 613,  
O 302, O 322  
1964....



**Piston Ölçüleri**  
(Piston Dimensions)

**Piston Özellikleri**  
(Piston Features)



**Piston Parça No**  
(Piston Part No)



**Segman Seti**  
(Ring Set)

06-166600-20-STD  
06-166607-20 0,50 mm  
06-166611-20 1,00 mm  
06-166614-20 1,50 mm

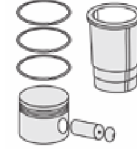
3.000 CR STD  
3.000 STD  
3.000 STD  
5.500 CR STD  
5.500 STD

06-140900-20-STD  
06-140907-20 0,50 mm  
06-140911-20 1,00 mm

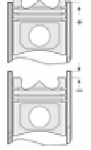
3.000 CR KV1  
3.000 GOE  
3.000 GOE  
5.500 CR GOE  
5.500 GOE



**Silindir Gömleği**  
(Liner)

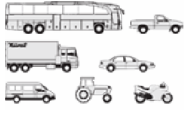


**Silindir Kit**  
(Assembly Set)



**Piston - Blok Montaj**  
Yüksekliği  
(Piston - Block  
Assembly Height)



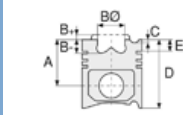


**Motor Özellikleri**  
(Engine Specifications)

İmalatçı (Manufacturer):  
MERCEDES BENZ LKW  
Çap (Diameter): Ø 97  
FM Grup No: 5942

**OM 352, OM 353.900/  
903/904/905/906/  
907/908/909/911**

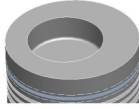
6 Sil. Dizel 5673cc  
51,5/99,5 Kw  
(70/130 PS) 17:1  
1013, 1113, 1213, 1313, 1317,  
1413, 1417, 1513, 1613, 1617,  
1713, 310, 323, 327, 328,  
329, 613, 710, 810, 811,  
813, 911, 913, HHF, O 302,  
O 305, O 309, O 311,  
O 312, O 321, O 322  
1974 - 1982



**Piston Ölçüleri**  
(Piston Dimensions)

A : 65.200  
B - : 20.000  
BØ : 55.000  
BX : 5.000  
D : 115.700  
E : 17.000

Pim: 36 x 82,5



**Piston Özellikleri**  
(Piston Features)

Segman Taşıyıcı  
(Ring Carrier)  
Gözarası Düz  
(Flat Eye Gap)



**Piston Parça No**  
(Piston Part No)

87-178800-13  
87-70490-STDC1C  
0,30 mm Kısa (Short)

87-178800-14  
87-70490-STDC2C  
0,60 mm Kısa (Short)

87-178800-12  
87-70490-STDC

87-178807-12  
87-70490 050C

87-178811-12  
87-70490 100C



**Segman Seti**  
(Ring Set)

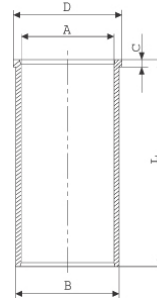
06-178800-20-STD  
06-178807-20 0,50 mm  
06-178811-20 1,00 mm

3.000 CR KV1  
3.000 STD  
3.000 STD  
5.500 CR STD



**Silindir Gömleği**  
(Liner)

14-021850-00-D  
B : 101.000  
L : 222.000  
D : 103.500  
C : 5.500



14-021851-00-D  
B : 102.000  
L : 222.000  
D : 104.500  
C : 5.500

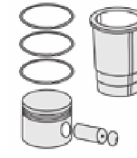
Dış Çap 1,0 mm Farklı  
(Outer Diameter  
1,00 mm Different)

14-021852-00 D  
B : 103.000  
L : 222.000  
D : 105.500  
C : 5.500

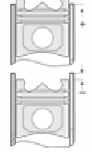
Dış Çap 2,0 mm Farklı  
(Outer Diameter  
0,20 mm Different)

14-021853-00 D  
B : 101.500  
L : 222.000  
D : 104.000  
C : 5.500

Dış Çap 0,50 mm Farklı  
(Outer Diameter  
0,50 mm Different)



**Silindir Kit**  
(Assembly Set)



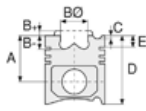
**Piston - Blok Montaj**  
Yüksekliği  
(Piston - Block  
Assembly Height)

- 0,08/ + 0,30





**Motor Özellikleri**  
(Engine Specifications)



**Piston Ölçüleri**  
(Piston Dimensions)



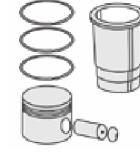
**Piston Parça No**  
(Piston Part No)



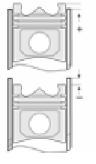
**Segman Seti**  
(Ring Set)



**Silindir Gömleği**  
(Liner)



**Silindir Kit**  
(Assembly Set)



**Piston - Blok Montaj**  
**Yüksekliği**  
(Piston - Block  
Assembly Height)

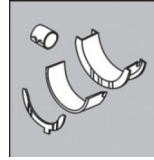
**ALT TAKIM CONTA SETİ**  
(UNDERSET GASKET SET)



22-24323-01/0

22-27197-00/0

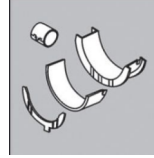
**ANA YATAK**  
(MAIN BED)



H712/5

STD, 0,25MM, 0,50MM  
OM314.963

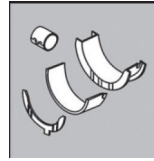
**EKSANTRİK YATAK**  
(ECCENTRIC BEARING)



N049/4  
STD SEMI

N049/4L STD SEMI

**KOL BURCU**  
(ARM BUSH)



55-2535  
SEMI

**KOL YATAK**  
(ARM BED)



71-3572/4

STD, 0,25MM, 0,50MM, 0,75MM, 1,00MM

**SİL. KAPAK. CONTASI**  
(CYLINDER HEAD GASKET)



30-026026-50

30-026026-60

**ÜST TAKIM CONTA SETİ**  
(UPPER INSERT GASKET SET)



21-26026-21/0



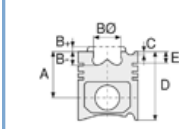


**Motor Özellikleri**  
(Engine Specifications)

İmalatçı (Manufacturer):  
MERCEDES BENZ LKW  
Çap (Diameter): Ø 97  
FM Grup No: 5943

**OM 352A, OM 353A**

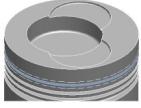
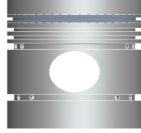
6 Sil. Dizel 5675cc  
125 Kw (170 PS) 17:1  
Turbo  
1013, 1017, 1113, 1213,  
1217, 1313, 1417, 1513,  
1613, 1617, 1813, 322,  
327, 911, 917, O 321  
1971....



**Piston Ölçüleri**  
(Piston Dimensions)

A : 65.200  
B- : 20.000  
BØ : 55.000  
BX : 5.000  
C1 : 2.400  
D : 115.700  
E : 17.000

Pim: 36 x 82,5



**Piston Özellikleri**  
(Piston Features)

Segman Taşıyıcı  
(Ring Carrier)  
Gözarası Düz  
(Flat Eye Gap)



**Piston Parça No**  
(Piston Part No)

87-174300-22  
87-70491-STD C  
87-174307-22  
87-70491 050C  
87-174311-22  
87-70491 100C  
87-174314-22  
87-70491 150C



**Segman Seti**  
(Ring Set)

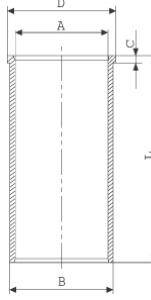
06-174300-70-STD  
06-174307-70 0,50 mm  
06-174311-70 1,00 mm

3.000 CR KVI  
3.000 GOE  
3.000 GOE  
5.500 CR GOE  
5.500 STD



**Silindir Gömleği**  
(Liner)

14-021850-00-D  
B : 101.000  
L : 222.000  
D : 103.500  
C : 5.500



14-021851-00-D  
B : 102.000  
L : 222.000  
D : 104.500  
C : 5.500

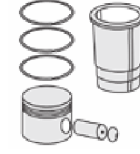
Dış Çap 1,0 mm Farklı  
(Outer Diameter  
1,0 mm Different)

14-021852-00 D  
B : 103.000  
L : 222.000  
D : 105.500  
C : 5.500

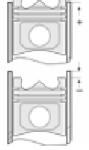
Dış Çap 2,0 mm Farklı  
(Outer Diameter  
2,0 mm Different)

14-021853-00 D  
B : 101.500  
L : 222.000  
D : 104.000  
C : 5.500

Dış Çap 0,50 mm Farklı  
(Outer Diameter  
0,50 mm Different)



**Silindir Kit**  
(Assembly Set)



**Piston - Blok Montaj**  
Yüksekliği  
(Piston - Block  
Assembly Height)

- 0,07 / + 0,30





**Motor Özellikleri**  
(Engine Specifications)

İmalatçı (Manufacturer):  
MERCEDES BENZ LKW  
Çap (Diameter): Ø 97  
FM Grup No: 5945

**OM 314.963**

4 Sil. Dizel 3782cc  
53/63 Kw (72/85 PS) 17:1  
408, 508, 608, 707,  
709, 808, 809, O 309  
1964 - 1981

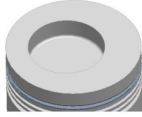
**OM 352.906 ,  
OM353.949**

6 Sil. Dizel 5673cc  
51,5/99,5 Kw  
(70/130 PS) 17:1  
1013, 1113, 1213, 1313,  
1413, 1513, 1613, 408,  
508, 608, 613, 709,  
710, 808, 809, 810,  
811, 813, 911, 913  
1964 - 1982

**Piston Ölçüleri**  
(Piston Dimensions)

A : 65.200  
B- : 20.000  
BØ : 55.000  
BX : 5.000  
D : 115.700  
E : 17.000

Pim: 36 x 82,5



**Piston Özellikleri**  
(Piston Features)

Segman Taşıyıcı  
(Ring Carrier)  
Gözarası Düz  
(Flat Eye Gap)

**Piston Parça No**  
(Piston Part No)

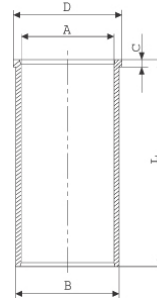
87-174300-72  
87-70492-STDC  
  
87-174307-72  
87-70492 050C  
  
87-174311-72  
87-70492 100C  
  
87-174314-72  
87-70492 150C

**Segman Seti**  
(Ring Set)

06-174300-70-STD  
06-174307-70 0,50 mm  
06-174311-70 1,00 mm  
  
3.000 CR KV1  
3.000 GOE  
3.000 GOE  
5.500 CR GOE  
5.500 STD

**Silindir Gömleği**  
(Liner)

14-021850-00-D  
B : 101.000  
L : 222.000  
D : 103.500  
C : 5.500



14-021851-00-D  
B : 102.000  
L : 222.000  
D : 104.500  
C : 5.500

Dış Çap 1,0 mm Farklı  
(Outer Diameter  
1,0 mm Different)

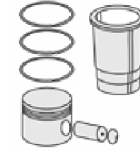
14-021852-00 D  
B : 103.000  
L : 222.000  
D : 105.500  
C : 5.500

Dış Çap 2,0 mm Farklı  
(Outer Diameter  
2,0 mm Different)

14-021853-00 D  
B : 101.500  
L : 222.000  
D : 104.000  
C : 5.500

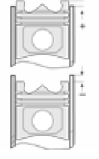
Dış Çap 0,50 mm farklı  
(Outer Diameter  
0,50 mm Different)

**Silindir Kit**  
(Assembly Set)



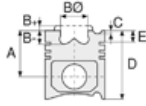
**Piston - Blok Montaj**  
Yüksekliği  
(Piston - Block  
Assembly Height)

- 0,07 / + 0,35

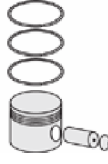




Motor Özellikleri  
(Engine Specifications)



Piston Ölçüleri  
(Piston Dimensions)



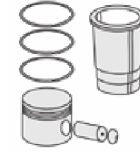
Piston Parça No  
(Piston Part No)



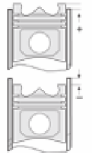
Segman Seti  
(Ring Set)



Silindir Gömleği  
(Liner)



Silindir Kit  
(Assembly Set)



Piston - Blok Montaj  
Yüksekliği  
(Piston - Block  
Assembly Height)

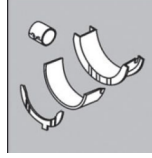
**ALT TAKIM CONTA SETİ**  
(UNDERSET GASKET SET)



22-24323-06/0

22-24323-07/0

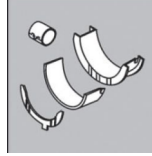
**ANA YATAK**  
(MAIN BED)



H712/5

STD, 0,25MM, 0,50MM  
OM314.963

**EKSANTRİK YATAK**  
(ECCENTRIC BEARING)



N122/3L

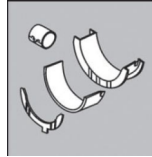
SEMI

**FULL TAKIM CONTA SETİ**  
(FULL TOOL GASKET SET)



20-25093-03/0

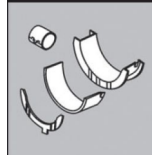
**KOL BURCU**  
(ARM BUSH)



55-2535

SEMI

**KOL YATAK**  
(ARM BED)



71-3572/4

STD, 0,25MM, 0,50MM, 0,75MM, 1,00MM

**SİL. KAPAK. CONTASI**  
(CYLINDER HEAD GASKET)



30-025093-10

30-025093-20

**ÜST TAKIM CONTA SETİ**  
(UPPER INSERT GASKET SET)



21-25093-23/0





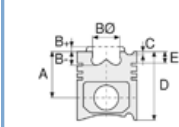
**Motor Özellikleri**  
(Engine Specifications)

İmalatçı (Manufacturer):  
MERCEDES BENZ LKW  
Çap (Diameter): Ø 97  
FM Grup No: 5946

**OM 352A.353.909-  
914/950-954/970-  
972/974**

6 Sil. Dizel 5675cc  
92/127 Kw (125/173 PS) 17:1  
Turbo

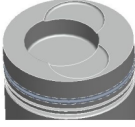
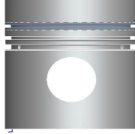
1013, 1017, 1100, 1213,  
1217, 1300, 1313, 1417,  
1500, 1513, 1613, 1617,  
1813, 300, 917, U1000,  
U1200, U1300, U150,  
U1500, U1700, U425  
1971 - 1982



**Piston Ölçüleri**  
(Piston Dimensions)

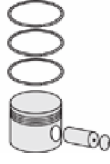
A : 65.200  
B - : 20.000  
BØ : 55.000  
BX : 5.000  
C1 : 2.200  
D : 105.200  
E : 21.000

Pim: 36 x 82,5



**Piston Özellikleri**  
(Piston Features)

Segman Taşıyıcı  
(Ring Carrier)  
Gözarası Düz  
(Flat Eye Gap)



**Piston Parça No**  
(Piston Part No)

87-178200-43  
87-70495-STDC1  
0,30 mm Kısa (Short)

87-178200-44  
87-70495-STDC2  
0,60 mm Kısa (Short)

87-178200-42  
87-70495-STDC

87-178207-42  
87-70495 050C

87-178211-42  
87-70495 100C



**Segman Seti**  
(Ring Set)

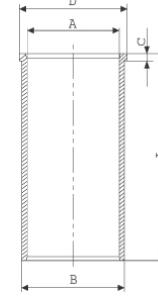
06-178200-80-STD  
06-178207-80 0,50 mm  
06-178211-80 1,00 mm

2.500 CK KVI  
2.500 CK STD  
4.000 CR STD



**Silindir Gömleği**  
(Liner)

14-021850-00-D  
B : 101.000  
L : 222.000  
D : 103.500  
C : 5.500



14-021851-00-D  
B : 102.000  
L : 222.000  
D : 104.500  
C : 5.500

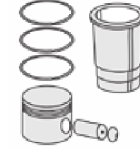
Dış Çap 1,0 mm Farklı  
(Outer Diameter  
1,0 mm Different)

14-021852-00 D  
B : 103.000  
L : 222.000  
D : 105.500  
C : 5.500

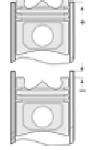
Dış Çap 2,0 mm Farklı  
(Outer Diameter  
2,0 mm Different)

14-021853-00 D  
B : 101.500  
L : 222.000  
D : 104.000  
C : 5.500

Dış Çap 0,50 mm farklı  
(Outer Diameter  
0,50 mm Different)



**Silindir Kit**  
(Assembly Set)

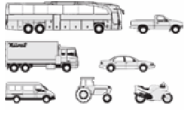


**Piston - Blok Montaj**  
Yüksekliği  
(Piston - Block  
Assembly Height)

- 0,07 / + 0,30







**Motor Özellikleri**  
(Engine Specifications)

İmalatçı (Manufacturer):  
MERCEDES BENZ LKW  
Çap (Diameter): Ø 97  
FM Grup No: 5947

**OM 314A**

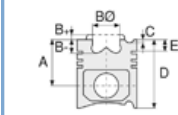
4 Sil. Dizel 3780cc  
63 Kw (85 PS) 16:1  
Turbo  
MB TRAC 900  
1982 - 1986

**OM 352A, OM 353A**

6 Sil. Dizel 5675cc 92/123  
Kw (125/168 PS) 17:1  
Turbo  
1017, 1217, 1300, 1417,  
1500, 1617, U 1000,  
U 1250, U 1300,  
U 1500, U 1700  
1982 - 1986

**OM 362LA.906/  
909/910**

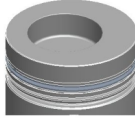
6 Sil. Dizel 5675cc 141  
Kw (192 PS) 17:1  
Turbo  
1419, 1420, 1619,  
1620, 2219, 2220  
1982 - 1986



**Piston Ölçüleri**  
(Piston Dimensions)

A : 65.200  
B - : 21.500  
BØ : 55.000  
BX : 5.000  
D : 105.200  
E : 21.000

Pim: 36 x 82,5



**Piston Özellikleri**  
(Piston Features)

Segman Taşıyıcı  
(Ring Carrier)  
Gözarası Düz  
(Flat Eye Gap)



**Piston Parça No**  
(Piston Part No)

87-178200-53  
87-70496-STD1B  
0,30 mm Kısa (Short)

87-178200-54  
87-70496-STD2B  
0,60 mm Kısa (Short)

87-178200-52  
87-70496-STDB

87-178207-52  
87-70496 050B

87-178211-52  
87-70496 100B



**Segman Seti**  
(Ring Set)

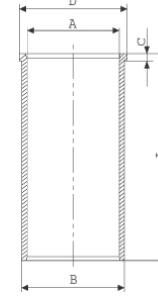
06-178200-80-STD  
06-178207-80 0,50 mm  
06-178211-80 1,00 mm

2.500 CK KVI  
2.500 CK STD  
4.000 CR STD



**Silindir Gömleği**  
(Liner)

14-021850-00-D  
B : 101.000  
L : 222.000  
D : 103.500  
C : 5.500



14-021851-00-D  
B : 102.000  
L : 222.000  
D : 104.500  
C : 5.500

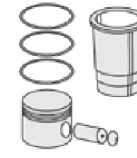
Dış Çap 1,0 mm Farklı  
(Outer Diameter  
1,0 mm Different)

14-021852-00 D  
B : 103.000  
L : 222.000  
D : 105.500  
C : 5.500

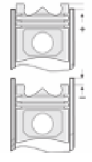
Dış Çap 2,0 mm Farklı  
(Outer Diameter  
2,0 mm Different)

14-021853-00 D  
B : 101.500  
L : 222.000  
D : 104.000  
C : 5.500

Dış Çap 0,50 mm farklı  
(Outer Diameter  
0,50 mm Different)



**Silindir Kit**  
(Assembly Set)



**Piston - Blok Montaj**  
Yüksekliği  
(Piston - Block  
Assembly Height)

- 0,07 / + 0,30





MERCEDES BENZ LKW - Ø 97,5

87-70500-STDC

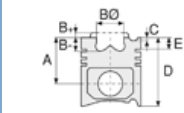


**Motor Özellikleri**  
(Engine Specifications)

İmalatçı (Manufacturer):  
MERCEDES BENZ LKW  
Çap (Diameter): Ø 97,5  
FM Grup No: 5949

**OM 364.906/907/912**  
4 Sil. Dizel 3972cc 66/85  
Kw (90/115 PS) 17:1  
İş Makinası (Working  
Machine)  
1966....

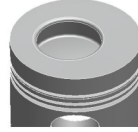
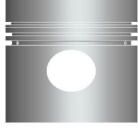
**OM 366.905/907/  
909/910/912/914/  
917/919/930**  
6 Sil. Dizel 5958cc  
100 Kw (136 PS) 17:1  
1114, 1314, 1414, 1614,  
709, 809, 811, 814,  
914, O 301, O 402  
1984....



**Piston Ölçüleri**  
(Piston Dimensions)

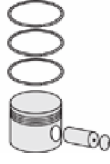
A : 62.800  
B- : 22.700  
BØ : 48.000  
BX : 5.000  
D : 107.800  
E : 20.600

Pim: 36 x 82,5



**Piston Özellikleri**  
(Piston Features)

Segman Taşıyıcı  
(Ring Carrier)  
Gözarası Düz  
(Flat Eye Gap)



**Piston Parça No**  
(Piston Part No)

87-740000-23  
87-70500-STD1B  
0,30 mm Kısa (Short)

87-740000-24  
87-70500-STD2B  
0,60 mm Kısa (Short)

87-740000-22  
87-70500-STD B

87-740007-22  
87-70500 050

87-740000-03  
87-70500-STD1C  
0,30 mm Kısa (Short)

87-740000-04  
87-70500-STD2C  
0,60 mm Kısa (Short)

87-740000-02  
87-70500-STDC

87-740007-02  
87-70500 050A



**Segman Seti**  
(Ring Set)

06-740000-30-STD  
06-740007-30 0.50 mm

2.500 PVD ST  
2.500 CR GOE  
4.000 CR STD

Goetze® LKZ-Ring®

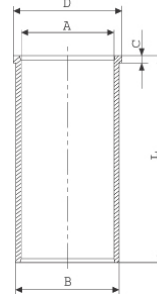
06-740000-80-STD  
06-740007-80 0,50 mm

2.500 CK KV1  
2.500 CR GOE  
4.000 CR STD



**Silindir Gömleği**  
(Liner)

14-025800-20-D  
B : 100.400  
L : 222.000  
D : 103.500  
C : 5.200



14-025801-20-D  
B : 101.000  
L : 222.000  
D : 104.000  
C : 5.500

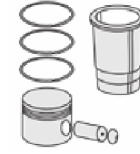
Dış Çap 0,60mm Farklı  
(Outer Diameter  
0,60 mm Different)

14-025802-20-D  
B : 102.000  
L : 222.000  
D : 105.000  
C : 6.000

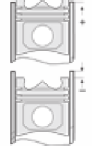
Dış Çap 1,60mm Farklı  
(Outer Diameter  
1,60 mm Different)

14-025806-20-D  
B : 101.400  
L : 222.000  
D : 104.500  
C : 6.000

Dış Çap 1,00mm Farklı  
(Outer Diameter  
1,00 mm Different)



**Silindir Kit**  
(Assembly Set)



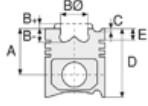
**Piston - Blok Montaj**  
Yüksekliği  
(Piston - Block  
Assembly Height)

- 0,07 / + 0,30

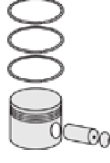




**Motor Özellikleri**  
(Engine Specifications)



**Piston Ölçüleri**  
(Piston Dimensions)



**Piston Parça No**  
(Piston Part No)



**Segman Seti**  
(Ring Set)



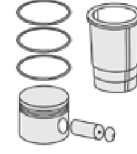
**Silindir Gömleği**  
(Liner)

14-025807-20-D  
B : 100.650  
L : 222.000  
D : 103.750  
C : 5.500

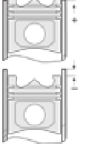
Dış Çap 0,25mm Farklı  
(Outer Diameter  
0,25 mm Different)

14-025808-20-D  
B : 100.500  
L : 222.000  
D : 103.500  
C : 5.200

Dış Çap 0,10 mm Farklı  
(Outer Diameter  
0,10 mm Different)



**Silindir Kit**  
(Assembly Set)



**Piston - Blok Montaj**  
**Yüksekliği**  
(Piston - Block  
Assembly Height)





**Motor Özellikleri**  
(Engine Specifications)

İmalatçı (Manufacturer):  
MERCEDES BENZ LKW  
Çap (Diameter): Ø 97,5  
FM Grup No: 5950

**OM 364A.952/953/954**

4 Sil. Dizel 3972cc  
85 Kw (115 PS) 16,3:1  
Turbo  
711, 811, O 611  
1984....

**OM 364LA**

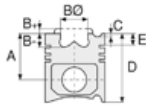
4 Sil. Dizel 3972cc  
100 Kw (136 PS) 16,3:1  
Turbocharged Intercool  
814, O 614  
1987....

**OM 366A.953/962**

6 Sil. Dizel 5958cc  
116/125 Kw  
(158/170 PS) 16,3:1  
Turbo  
1117, 1317, 1417, 1517, 1617,  
817, 917, O 301, O 402  
1984....

**OM 366LA.980/988**

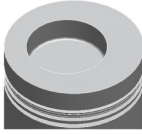
6 Sil. Dizel 5958cc  
148/155 Kw  
(201/211 PS) 16,3:1  
Turbocharged Intercool  
1017, 1120, 1320, 1419,  
1617, 1620, 2219, 2220,  
2222, 2517, 2521  
1984....



**Piston Ölçüleri**  
(Piston Dimensions)

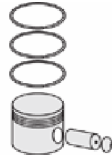
A : 62.800  
B - : 22.350  
BØ : 56.000  
BX : 5.000  
D : 107.800  
E : 20.600

Pim: 36 x 82,5



**Piston Özellikleri**  
(Piston Features)

Segman Taşıyıcı  
(Ring Carrier)  
Gözarası Düz  
(Flat Eye Gap)



**Piston Parça No**  
(Piston Part No)

87-740000-53  
87-70501-STD1B  
0,30 mm Kısa (Short)

87-740000-54  
87-70501-STD2B  
0,60 mm Kısa (Short)

87-740000-52  
87-70501-STD B

87-740007-52  
87-70501 050B

87-740011-52  
87-70501 1,00B

87-740000-63  
87-72561-STD1B  
0,20 mm Kısa (Short)

87-740000-62  
87-72561-STD B  
Sert Anotlu (Hard Anode)

87-740007-62  
87-72561 0,50B

87-740000-83  
87-70501-STD1C  
0,30 mm Kısa (Short)

87-740000-84  
87-70501-STD2C  
0,60 mm Kısa (Short)

87-740000-82  
87-70501-STDC

87-740007-82  
87-70501 050C



**Segman Seti**  
(Ring Set)

06-740000-30-STD  
06-740007-30 0.50 mm

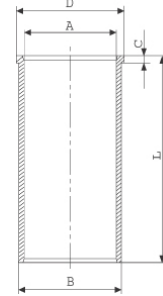
2.500 PVD ST  
2.500 CR GOE  
4.000 CR STD

Goetze® LKZ-Ring®



**Silindir Gömleği**  
(Liner)

14-025800-20-D  
B : 100.400  
L : 222.000  
D : 103.500  
C : 5.200



14-025801-20-D  
B : 101.000  
L : 222.000  
D : 104.000  
C : 5.500

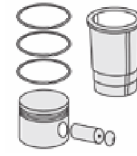
Dış Çap 0,60mm Farklı  
(Outer Diameter  
0,60 mm Different)

14-025802-20-D  
B : 102.000  
L : 222.000  
D : 105.000  
C : 6.000

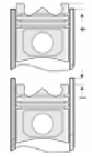
Dış Çap 1,60mm Farklı  
(Outer Diameter  
1,60 mm Different)

14-025806-20-D  
B : 101.400  
L : 222.000  
D : 104.500  
C : 6.000

Dış Çap 1,00mm Farklı  
(Outer Diameter  
1,00 mm Different)



**Silindir Kit**  
(Assembly Set)



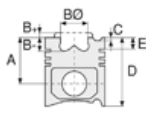
**Piston - Blok Montaj**  
Yüksekliği  
(Piston - Block  
Assembly Height)

- 0,07 / + 0,30

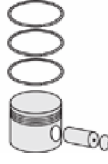




**Motor Özellikleri**  
(Engine Specifications)



**Piston Ölçüleri**  
(Piston Dimensions)



**Piston Parça No**  
(Piston Part No)



**Segman Seti**  
(Ring Set)



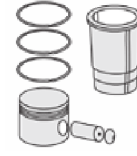
**Silindir Gömleği**  
(Liner)

14-025807-20-D  
B : 100.650  
L : 222.000  
D : 103.750  
C : 5.500

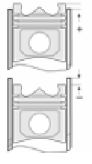
Dış Çap 0,25mm Farklı  
(Outer Diameter  
0,25 mm Different)

14-025808-20-D  
B : 100.500  
L : 222.000  
D : 103.500  
C : 5.200

Dış Çap 0,10 mm Farklı  
(Outer Diameter  
0,10 mm Different)

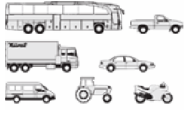


**Silindir Kit**  
(Assembly Set)



**Piston - Blok Montaj**  
**Yüksekliği**  
(Piston - Block  
Assembly Height)



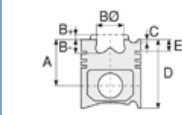


**Motor Özellikleri**  
(Engine Specifications)

İmalatçı (Manufacturer):  
MERCEDES BENZ LKW  
Çap (Diameter): Ø 97,5  
FM Grup No: 5951

**OM 364LA.901 EURO I**  
4 Sil. Dizel 3970cc  
102 Kw (139 PS) 17,25:1  
Turbocharged Intercool  
814  
1993....

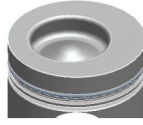
**OM 366LA.356/**  
**977-99 EURO I**  
6 Sil. Dizel 5958cc  
155/177 Kw  
(211/240 PS) 17,25:1  
Turbocharged Intercool  
1120, 1124, 1224, 1231,  
1317, 1320, 1424, 1426,  
1427, 1434, 1520, 1524,  
1720, 1724, 1820, 1824,  
1827, 1920, 2524  
1993....



**Piston Ölçüleri**  
(Piston Dimensions)

A : 62.800  
B- : 22.600  
BØ : 54.760  
BX : 5.000  
D : 107.800  
E : 20.600

Pim: 36 x 82,5



**Piston Özellikleri**  
(Piston Features)

Segman Taşıyıcı  
(Ring Carrier)  
Gözarası Konik  
(Conical Eye Gap)



**Piston Parça No**  
(Piston Part No)

87-740000-73  
87-70502-STD1A  
0,30 mm Kısa (Short)

87-740000-74  
87-70502-STD2A  
0,60 mm Kısa (Short)

87-740000-72  
87-70502-STD A

87-740007-72  
87-70502 050A

87-740000-93  
87-70502-STD C

87-740007-93  
87-70502 050C



**Segman Seti**  
(Ring Set)

06-740000-30-STD  
06-740007-30 0.50 mm

2.500 PVD ST  
2.500 CR GOE  
4.000 CR STD

Goetze® LKZ-Ring®

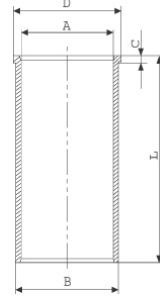
06-740000-80-STD  
06-740007-80 0,50 mm

2.500 CK KV1  
2.500 CR GOE  
4.000 CR STD



**Silindir Gömleği**  
(Liner)

14-025800-20-D  
B : 100.400  
L : 222.000  
D : 103.500  
C : 5.200



14-025801-20-D  
B : 101.000  
L : 222.000  
D : 104.000  
C : 5.500

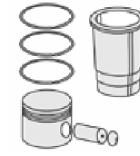
Dış Çap 0,60mm Farklı  
(Outer Diameter  
0,60 mm Different)

14-025802-20-D  
B : 102.000  
L : 222.000  
D : 105.000  
C : 6.000

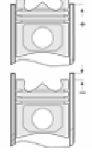
Dış Çap 1,60mm Farklı  
(Outer Diameter  
1,60 mm Different)

14-025806-20-D  
B : 101.400  
L : 222.000  
D : 104.500  
C : 6.000

Dış Çap 1,00mm Farklı  
(Outer Diameter  
1,00 mm Different)



**Silindir Kit**  
(Assembly Set)



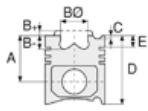
**Piston - Blok Montaj**  
**Yüksekliği**  
(Piston - Block  
Assembly Height)

- 0,07 / + 0,30

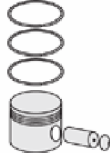




**Motor Özellikleri**  
(Engine Specifications)



**Piston Ölçüleri**  
(Piston Dimensions)



**Piston Parça No**  
(Piston Part No)



**Segman Seti**  
(Ring Set)



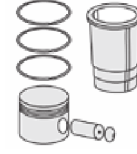
**Silindir Gömleği**  
(Liner)

14-025807-20-D  
B : 100.650  
L : 222.000  
D : 103.750  
C : 5.500

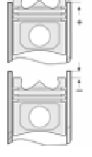
Dış Çap 0,25mm Farklı  
(Outer Diameter  
0,25 mm Different)

14-025808-20-D  
B : 100.500  
L : 222.000  
D : 103.500  
C : 5.200

Dış Çap 0,10 mm Farklı  
(Outer Diameter  
0,10 mm Different)



**Silindir Kit**  
(Assembly Set)



**Piston - Blok Montaj**  
Yüksekliği  
(Piston - Block  
Assembly Height)





MERCEDES BENZ LKW - Ø 97,5

87-72536-STD

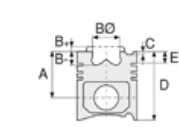


**Motor Özellikleri**  
(Engine Specifications)

İmalatçı (Manufacturer):  
MERCEDES BENZ LKW  
Çap (Diameter): Ø 97,5  
FM Grup No: 6027

**OM 364A**  
4 Sil. Dizel 3970cc  
77 KW ( 105 PS )  
1717, 711, 811  
1989....

**OM 366A EURO 1**  
6 Sil. Dizel 5958cc  
77 KW ( 105 PS )  
1717, 711, 811  
1989....



**Piston Ölçüleri**  
(Piston Dimensions)

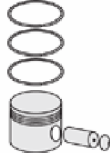
A : 62.800  
B- : 23.000  
BØ : 54.300  
BX : 5.000  
D : 107.800  
E : 20.700

Pim: 36 x 82,5



**Piston Özellikleri**  
(Piston Features)

Gözarası Düz  
(Flat Eye Gap)



**Piston Parça No**  
(Piston Part No)

87-740000-13  
87-72536-STD  
  
87-740007-13  
87-72536 0,50



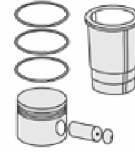
**Segman Seti**  
(Ring Set)

06-740000-30-STD  
06-740007-30 0.50 mm  
  
2.500 PVD ST  
2.500 CR GOE  
4.000 CR STD

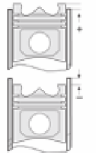
Goetze® LKZ-Ring®



**Silindir Gömleği**  
(Liner)



**Silindir Kit**  
(Assembly Set)



**Piston - Blok Montaj**  
Yüksekliği  
(Piston - Block  
Assembly Height)

-0,08/+0,44







**Motor Özellikleri**  
(Engine Specifications)

İmalatçı (Manufacturer):  
MERCEDES BENZ LKW  
Çap (Diameter): Ø 100  
FM Grup No: 5971

**OM 501 Hava Komp.**  
(Air Comp.)

1 Sil. Dizel  
ACTROS Hava Komp.  
(Air Comp.)  
1996....

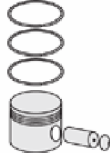
**Piston Ölçüleri**  
(Piston Dimensions)

A : 30.400  
D : 52.200  
E : 3.500  
Pim: 20 x 50



**Piston Özellikleri**  
(Piston Features)

Gözarası Düz  
(Flat Eye Gap)



**Piston Parça No**  
(Piston Part No)

87-825700-62  
87-72537-STDK



**Segman Seti**  
(Ring Set)

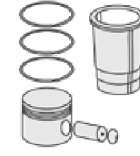
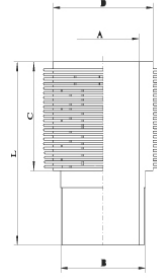
06-825700-30-STD

2.500 GOE  
2.500 GOE  
4.000 STD



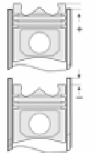
**Silindir Gömleği**  
(Liner)

14-000310-00-WH  
B : 115.000  
L : 102.000  
D : 130.000  
C : 53.000



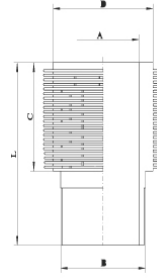
**Silindir Kit**  
(Assembly Set)

88-825700-62-STD  
88-72537-STDK



**Piston - Blok Montaj**  
Yüksekliği  
(Piston - Block  
Assembly Height)

14-000350-00-WH  
B : 106.000  
L : 101.000  
D : 130.000  
C : 88.900



88-825700-72-STD  
88-72537-STDL

87-825700-03  
87-72537STD1B  
0,30 mm Kısa (Short)

87-825500-02  
87-72537STDB

87-825707-02  
87-72537 050B

06-825500-20-STD

2.500 GOE  
2.500 GOE  
4.000 STD

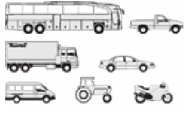
14-000310-00-WH

14-000350-00-WH

88-825700-02-STD  
88-72537-STDH

88-825500-12-STD  
88-72537-STDJ





**Motor Özellikleri**  
(Engine Specifications)

İmalatçı (Manufacturer):  
MERCEDES BENZ LKW  
Çap (Diameter): Ø 100  
FM Grup No: 59041

**Kompresör**  
(Compressor)  
1 Sil.

OM 501/502  
Kompresör (Compressor)

**Piston Ölçüleri**  
(Piston Dimensions)

A : 30.400  
D : 52.200  
E : 3.700

Pim: 20 x 50



**Piston Özellikleri**  
(Piston Features)

Gözarası Düz  
(Flat Eye Gap)



**Piston Parça No**  
(Piston Part No)

87-826050-02  
87-72538-STD A



**Segman Seti**  
(Ring Set)

06-826050-20-STD

2.500 CR KV1  
2.500 F14  
3.000 GOE

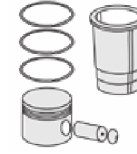
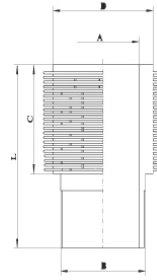
Yağ Segmanı Matkap  
Delik (Oil Ring Drill Hole)



**Silindir Gömleği**  
(Liner)

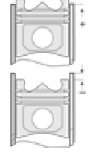
14-000350-00-WH

B : 106.000  
L : 101.000  
D : 130.000  
C : 88.900



**Silindir Kit**  
(Assembly Set)

88-826050-02-STD  
88-72538-STD A



**Piston - Blok Montaj**  
Yüksekliği  
(Piston - Block  
Assembly Height)

14-000430-00-WH

88-826050-12-STD  
88-72538-STDB



87-826050-22  
87-72538-STDC

06-826050-40-STD

2.500 KV1  
2.500 F14  
3.000 GOE

14-000350-00-WH

88-826050-22-STD  
88-72538-STDC

14-000430-00-WH

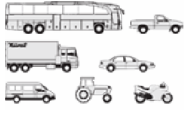
88-826050-32-STD  
88-72538-STDD





MERCEDES BENZ LKW - Ø 102

87-72534-STD



**Motor Özellikleri**  
(Engine Specifications)

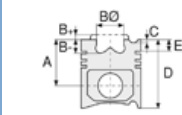
İmalatçı (Manufacturer):  
MERCEDES BENZ LKW  
Çap (Diameter): Ø 102  
FM Grup No: 590112

**OM 904 LA Euro4**

4 Sil. Dizel 4250cc  
115-130 KW  
(156-177 PS) 17,4:1  
Atego 1216, Atego 1518  
2008...

**OM 906 LA Euro4**

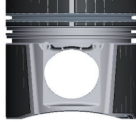
6 Sil. Dizel 6370cc  
175-210 KW  
(238-286 Ps) 17,4:1  
Atego 2124, Axor 1824K,  
Axor 2524CD, Axor 2529K,  
Axor 2529KL, Axor  
3029B, Axor 3029K,  
Axor 3229CD  
2008...



**Piston Ölçüleri**  
(Piston Dimensions)

A : 64.400  
B - : 13.900  
BØ : 73.230  
D : 102.400  
E : 14.800

Pim: 42 x 80



**Piston Özellikleri**  
(Piston Features)

Segman Taşıyıcı  
(Ring Carrier)  
Sert Anotlama  
(Hard Anodizing)  
Yağ Püskürtme Oyuğu  
(Oil Jet Cut-out)  
Gözarası Düz  
(Flat Eye Gap)



**Piston Parça No**  
(Piston Part No)

87-877807-43  
87-72534-0501A  
0,30 mm Kısa (Short)

87-877800-43  
87-72534-STD1A  
0,30 mm Kısa (Short)

87-877800-42  
87-72534-STD A

87-877807-42  
87-72534 0,50A



**Segman Seti**  
(Ring Set)

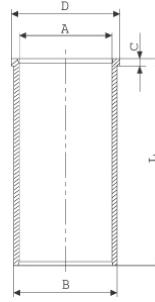
06-877800-30-STD  
06-877807-30 0,50

3.500 CK KV4  
2.500 F14  
4.000 CK GOE



**Silindir Gömleği**  
(Liner)

14-020320-10-D  
B : 106.020  
L : 220.000  
D : 109.500  
C : 6.000

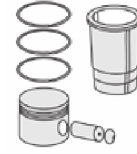


14-020321-10-D  
B : 106.500  
L : 220.000  
D : 110.000  
C : 6.500

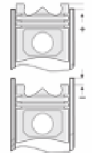
Dış Çap 0,50 mm Farklı  
(Outer Diameter  
0,50 mm Different)

14-020322-10-D  
B : 107.000  
L : 220.000  
D : 110.500  
C : 7.000

Dış Çap 1,00 mm Farklı  
(Outer Diameter  
1,00 mm Different)



**Silindir Kit**  
(Assembly Set)



**Piston - Blok Montaj**  
Yüksekliği  
(Piston - Block  
Assembly Height)

+0,28/+0,50



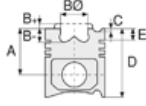


MERCEDES BENZ LKW - Ø 102

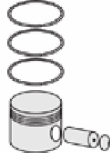
87-72534-STD



Motor Özellikleri  
(Engine Specifications)



Piston Ölçüleri  
(Piston Dimensions)



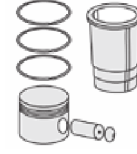
Piston Parça No  
(Piston Part No)



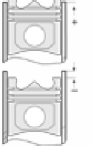
Segman Seti  
(Ring Set)



Silindir Gömleği  
(Liner)

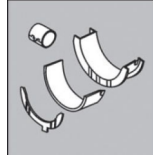


Silindir Kit  
(Assembly Set)



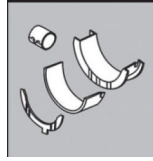
Piston - Blok Montaj  
Yüksekliği  
(Piston - Block  
Assembly Height)

ANA YATAK  
(MAIN BED)



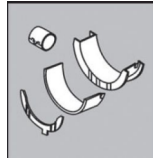
72-3851 STD

EKSANTRİK YATAK  
(ECCENTRIC BED)



N 146/5 STD

KOL YATAK  
(ARM BED)



71-3850 STD

SİL. KAPAK. CONTA  
(CYLINDER HEAD GASKET)



30-028733-20





**Motor Özellikleri**  
(Engine Specifications)

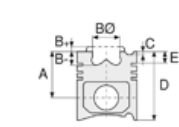
İmalatçı (Manufacturer):  
MERCEDES BENZ LKW  
Çap (Diameter): Ø 102  
FM Grup No: 5973

**OM 904LA EURO2**

4 Sil. Dizel 4250cc  
90/100/125  
Kw(122/136/170 PS) 17:1  
Turbocharged Intercool  
ATEGO 1215, ATEGO 1517  
2000....

**OM 906LA EURO2**

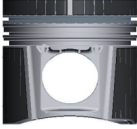
6 Sil. Dizel 6374cc  
170/205/228  
Kw(231/279/310 PS) 17:1  
Turbocharged Intercool  
AXOR 1823, AXOR 2523,  
AXOR 2528, AXOR 2628,  
AXOR 3028  
2000....



**Piston Ölçüleri**  
(Piston Dimensions)

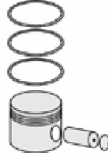
A : 64.400  
B- : 13.800  
BØ : 73.300  
D : 102.500  
E : 15.000

Pim: 42 x 80



**Piston Özellikleri**  
(Piston Features)

Segman Taşıyıcı  
(Ring Carrier)  
Gözarası Konik  
(Conical Eye Gap)



**Piston Parça No**  
(Piston Part No)

87-289357-23  
87-72535-0501B  
0,30 mm Kısa (Short)  
87-289357-24  
87-72535-0502B  
0,60 mm Kısa (Short)

87-289350-23  
87-72535-STD1B  
0,30 mm Kısa (Short)

87-289350-24  
87-72535-STD2B  
0,60 mm Kısa (Short)

87-289350-22  
87-72535-STDB

87-289357-22  
87-72535-050B



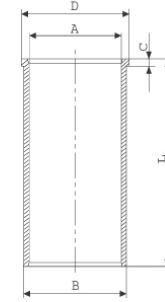
**Segman Seti**  
(Ring Set)

06-289350-30-STD  
06-289357-30 0,50  
3.000 CK KV4  
2.500 F14  
4.000 CR GOE



**Silindir Gömleği**  
(Liner)

14-020320-10-D  
B : 106.020  
L : 220.000  
D : 109.500  
C : 6.000

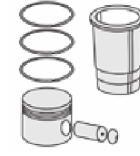


14-020321-10-D  
B : 106.500  
L : 220.000  
D : 110.000  
C : 6.500

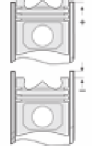
Dış Çap 0,50 mm Farklı  
(Outer Diameter  
0,50 mm Different)

14-020322-10-D  
B : 107.000  
L : 220.000  
D : 110.500  
C : 7.000

Dış Çap 1,00 mm Farklı  
(Outer Diameter  
1,00 mm Different)



**Silindir Kit**  
(Assembly Set)



**Piston - Blok Montaj**  
Yüksekliği  
(Piston - Block  
Assembly Height)

+0,28 / +0,50

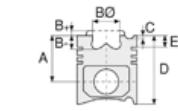




**Motor Özellikleri**  
(Engine Specifications)

İmalatçı (Manufacturer):  
MERCEDES BENZ LKW  
Çap (Diameter): Ø 102  
FM Grup No: 590129

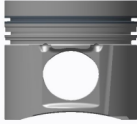
OM 906 LA EURO 5  
6 Sil. Dizel 6370cc  
210 kw-286 BG 17,4;1  
Axor 1829 K, Axor  
2529K, Axor 3029 K,  
Axor 3029B, Citaro  
2006...



**Piston Ölçüleri**  
(Piston Dimensions)

A : 64.400  
B- : 13.900  
BØ : 73.200  
D : 102.400  
E : 14.800

Pim: 42 x 80



**Piston Özellikleri**  
(Piston Features)

Segman Taşıyıcı  
(Ring Carrier)  
Sert Anotlama  
(Hard Anodizing)  
Soğutma Kanallı  
(Coolin Gallery)  
Yağ Püskürtme Oyuğu  
(Oil Jet Cut-out)  
Gözarası Konik  
(Conical Eye Gap)



**Piston Parça No**  
(Piston Part No)

87-877807-63  
87-72600-0501A  
0,30 mm Kısa (Short)

87-877800-63  
87-72600-STD1A  
0,30 mm Kısa (Short)

87-877800-62  
87-72600-STD A

87-877807-62  
87-72600 0,50A



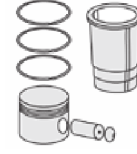
**Segman Seti**  
(Ring Set)

06-877800-30-STD  
06-877807-30 0,50

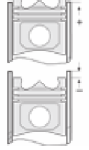
3.500 CK KV4  
2.500 F14  
4.000 CK GOE



**Silindir Gömleği**  
(Liner)



**Silindir Kit**  
(Assembly Set)



**Piston - Blok Montaj**  
Yüksekliği  
(Piston - Block  
Assembly Height)





MERCEDES BENZ LKW - Ø 106

87-72520-STD

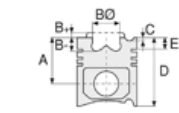


**Motor Özellikleri**  
(Engine Specifications)

İmalatçı (Manufacturer):  
MERCEDES BENZ LKW  
Çap (Diameter): Ø 106  
FM Grup No: 590136

**M 906 LAG EURO**  
**5 CNG ENGINE**

6 Sil. CNG 6884cc  
170-205KW/231-279PS  
10,5;1  
1828, 2628,  
BREDAMENARINIBUS  
VIVACITY VIVA  
2000....



**Piston Ölçüleri**  
(Piston Dimensions)

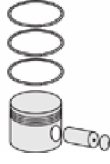
A : 66.400  
B- : 22.500  
BØ : 85.000  
D : 101.200  
E : 15.000

Pim: 42 x 80



**Piston Özellikleri**  
(Piston Features)

Segman Taşıyıcı  
(Ring Carrier)  
Yağ Püskürtme Oyuğu  
(Oil Jet Cut-out)  
Gözarası Konik  
(Conical Eye Gap)



**Piston Parça No**  
(Piston Part No)

87-878100-02  
87-72520-STD  
  
87-878107-02  
87-72520 0,50



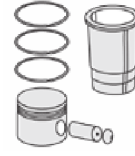
**Segman Seti**  
(Ring Set)

06-878100-20-STD  
06-878107-20 0,50

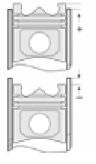
3.000 CKS KV4  
2.500 CR GOE  
4.000 CR GOE



**Silindir Gömleği**  
(Liner)



**Silindir Kit**  
(Assembly Set)



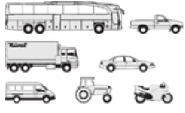
**Piston - Blok Montaj**  
Yüksekliği  
(Piston - Block  
Assembly Height)





MERCEDES BENZ LKW - Ø 110

87-72602-STD

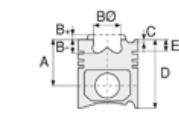


**Motor Özellikleri**  
(Engine Specifications)

İmalatçı (Manufacturer):  
MERCEDES BENZ LKW  
Çap (Diameter): Ø 110  
FM Grup No: 590133

**OM 936 EURO 6**

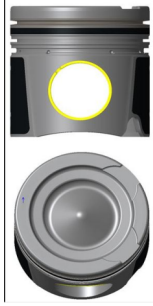
6 Sil. Dizel 7968cc  
200 KW-272 PS  
Actros, Akai Otobus,  
Arocs, ATEGO,  
Güleryüz Otobus,  
MTU Liman Kontenyer  
Taşıyıcı, Setra  
2011....



**Piston Ölçüleri**  
(Piston Dimensions)

A : 70.900  
B- : 17.550  
BØ : 84.700  
C1 : 2.300  
D : 110.000  
E : 12.000

Pim: 46 x 80



**Piston Özellikleri**  
(Piston Features)

Segman Taşıyıcı  
(Ring Carrier)  
Soğutma Kanallı  
(Coolin Gallery)  
Yağ Püskürtme Oyuğu  
(Oil Jet Cut-out)  
Burçlu Piston  
(Bushing Piston)  
Gözarası Konik  
(Conical Eye Gap)



**Piston Parça No**  
(Piston Part No)

87-865300-02  
87-72602-STD  
87-865307-02  
87-72602 0,50



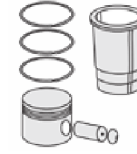
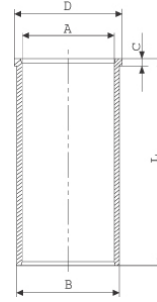
**Segman Seti**  
(Ring Set)

06-865300-20-STD  
06-865307-20 0,50  
3.500 GDC KV4  
2.500 PVD F14  
4.000 GDC GOE

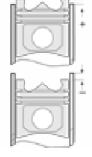


**Silindir Gömleği**  
(Liner)

14-022490-00-DH  
B : 114.000  
L : 227.000  
D : 116.000  
C : 6.000



**Silindir Kit**  
(Assembly Set)



**Piston - Blok Montaj**  
Yüksekliği  
(Piston - Block  
Assembly Height)

0,23/0,54





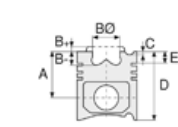


**Motor Özellikleri**  
(Engine Specifications)

İmalatçı (Manufacturer):  
MERCEDES BENZ LKW  
Çap (Diameter): Ø 115  
FM Grup No: 5953

**OM 360, OM 360H**  
6 Sil. Dizel 8720cc  
125/141 Kw (170/192 PS)  
16,8:1

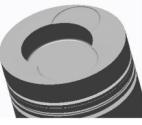
1113, 1216, 1313, 1317,  
1319, 1413, 1417, 1419,  
1519, 1617, 1619, 1817,  
1819, O 302, O 305  
1969 - 1977



**Piston Ölçüleri**  
(Piston Dimensions)

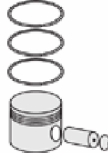
A : 85.300  
B - : 22.000  
BØ : 65.000  
BX : 5.000  
C1 : 0.700  
D : 133.300  
E : 24.000

Pim: 42 x 98



**Piston Özellikleri**  
(Piston Features)

Segman Taşıyıcı  
(Ring Carrier)  
Gözarası Düz  
(Flat Eye Gap)



**Piston Parça No**  
(Piston Part No)

87-176400-42  
87-70513-STDB  
  
87-176407-42  
87-70513 050B  
  
87-176411-42  
87-70513 100B  
  
87-176414-42  
87-70513 150B  
  
87-176416-42  
87-70513 200B



**Segman Seti**  
(Ring Set)

06-176400-30-STD  
06-176407-30 0,50 mm  
06-176411-30 1,00 mm  
06-176414-30 1,50 mm  
06-176416-30 2,0 mm

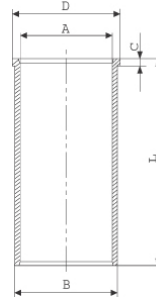
3.500 CR KV1  
3.000 F14  
5.500 CR STD

Goetze® LKZ-Ring®



**Silindir Gömleği**  
(Liner)

14-024240-00-D  
B : 120.000  
L : 253.500  
D : 125.000  
C : 5.500

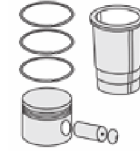


14-024241-00-D  
B : 121.000  
L : 253.500  
D : 126.000  
C : 6.000

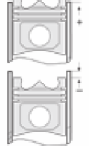
Dış Çap 1,0 mm Farklı  
(Outer Diameter  
1,0 mm Different)

14-024242-00-D  
B : 122.000  
L : 253.500  
D : 127.000  
C : 6.000

Dış Çap 2,0 mm Farklı  
(Outer Diameter  
2,0 mm Different)



**Silindir Kit**  
(Assembly Set)



**Piston - Blok Montaj**  
Yüksekliği  
(Piston - Block  
Assembly Height)

+ 0,08 / + 0,41





**Motor Özellikleri**  
(Engine Specifications)

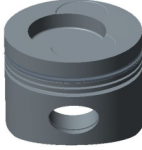
İmalatçı (Manufacturer):  
MERCEDES BENZ LKW  
Çap (Diameter): Ø 115  
FM Grup No: 5954

**OM 360A**  
6 Sil. Dizel 8725cc  
154 Kw (210 PS) 16,5:1  
Turbo Motor no:103.360-  
1978 - 1983

**Piston Ölçüleri**  
(Piston Dimensions)

A : 85.300  
B- : 22.000  
BØ : 65.000  
BX : 3.000  
BY : 1.500  
C1 : 0.700  
C2 : 2.200  
D : 133.300  
E : 24.000

Pim: 42 x 98



**Piston Özellikleri**  
(Piston Features)

Segman Taşıyıcı  
(Ring Carrier)  
Gözarası Düz  
(Flat Eye Gap)



**Piston Parça No**  
(Piston Part No)

87-176400-62  
87-70515-STDB  
87-176407-62  
87-70515 050B  
87-176411-62  
87-70515 100B  
87-176414-62  
87-70515 150B  
87-176416-62  
87-70515 200B



**Segman Seti**  
(Ring Set)

06-176400-30-STD  
06-176407-30 0,50 mm  
06-176411-30 1,00 mm  
06-176414-30 1,50 mm  
06-176416-30 2,0 mm

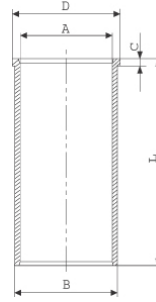
3.500 CR KV1  
3.000 F14  
5.500 CR STD

Goetze® LKZ-Ring®



**Silindir Gömleği**  
(Liner)

14-024240-00-D  
B : 120.000  
L : 253.500  
D : 125.000  
C : 5.500

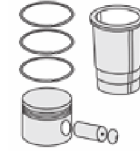


14-024241-00-D  
B : 121.000  
L : 253.500  
D : 126.000  
C : 6.000

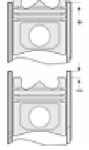
Dış Çap 1,0 mm Farklı  
(Outer Diameter  
1,0 mm Different)

14-024242-00-D  
B : 122.000  
L : 253.500  
D : 127.000  
C : 6.000

Dış Çap 2,0 mm Farklı  
(Outer Diameter  
2,0 mm Different)



**Silindir Kit**  
(Assembly Set)



**Piston - Blok Montaj**  
Yüksekliği  
(Piston - Block  
Assembly Height)

+ 0,30 / + 0,38





**Motor Özellikleri**  
(Engine Specifications)

İmalatçı (Manufacturer):  
MERCEDES BENZ LKW  
Çap (Diameter): Ø 125  
FM Grup No: 5955

**OM 401.900/**  
**905-909/912-916/**  
**918/919**

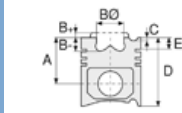
6 Sil. Dizel 9570cc  
136/142 Kw (185/192 PS)  
17,5:1  
1219, 1419, 1619, 1719, O 303  
1972....

**OM 402.900/**  
**905-907/910-914/916**

8 Sil. Dizel 12760cc  
177/188 Kw (240/256 PS)  
17,5:1  
1424, 1624, 1626, 1926,  
2026, 2224, 2226, 2620,  
2626, O 303  
1972 - 1982

**OM 403.910/**  
**001-007/915/919**

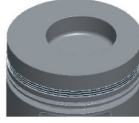
10 Sil. Dizel 15950cc  
184/236 Kw (250/320 PS)  
17,5:1  
1632, 1932, 2032,  
2232, O 303  
1972 - 1982



**Piston Ölçüleri**  
(Piston Dimensions)

A : 87.250  
B- : 23.500  
BØ : 65.000  
BX : 6.000  
BY : 2.000  
D : 137.250  
E : 23.940

Pim: 46 x 97



**Piston Özellikleri**  
(Piston Features)

Segman Taşıyıcı  
(Ring Carrier)  
Yağ Püskürtme Oyuğu  
(Oil Spray Groove)  
Göz Arası Düz  
(Flat Eye Gap)



**Piston Parça No**  
(Piston Part No)

87-176800-42  
87-70519-STDB



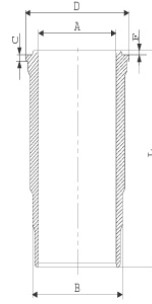
**Segman Seti**  
(Ring Set)

06-176800-80-STD  
3.000 CR KV1  
3.000 F14  
6.000 CR STD  
Goetze® LKZ-Ring®

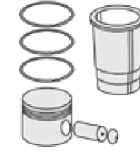


**Silindir Gömleği**  
(Liner)

14-457860-00-WH  
B : 140.000  
L : 253.000  
D : 152.000  
C : 10.070  
F : 1.000

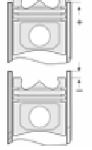


4 O-Ring Lastikli  
Dış Yüzeyi Fosfat Kaplı  
(With 4 O-Rings  
Outer Surface  
Phosphate Coated)



**Silindir Kit**  
(Assembly Set)

89-176800-22-STD  
89-70519-STDB

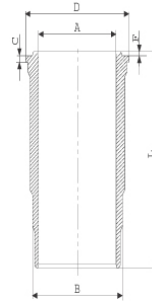


**Piston - Blok Montaj**  
**Yüksekliği**  
(Piston - Block  
Assembly Height)

+0,07/+0,43

14-451660-00-WH  
B : 140.000  
L : 253.500  
D : 152.000  
C : 10.070  
F : 1.000

89-176800-62-STD  
89-70519-STDJ

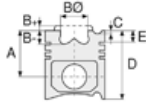


3 O-Ring Lastikli /  
O-RING Bilgi  
(3 O-Ring Elastic /  
O-RING Information)  
24-32419-80/O  
2x 138\*1,9 FPM  
1x 140\*3,8 FPM





**Motor Özellikleri**  
(Engine Specifications)



**Piston Ölçüleri**  
(Piston Dimensions)



**Piston Parça No**  
(Piston Part No)

87-176800-82  
87-70519-STDL



**Segman Seti**  
(Ring Set)

06-176800-70-STD

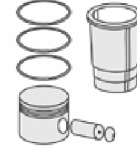
3.000  CK KV1  
3.000  CK IKA  
6.000  CR STD  
Goetze® LKZ-Ring®



**Silindir Gömleği**  
(Liner)

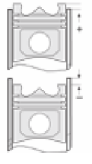
14-457860-00-WH

4 O-Ring Lastikli Dış  
Yüzeyi Fosfat Kaplı  
(4 O-Ring Elastic Outer  
Surface Phosphate  
Coated)



**Silindir Kit**  
(Assembly Set)

89-176800-82-STD  
89-70519-STDL



**Piston - Blok Montaj**  
**Yüksekliği**  
(Piston - Block  
Assembly Height)

14-451660-00-WH

3 O-Ring Lastikli /  
O-RING Bilgi  
(3 O-Ring Elastic /  
O-RING Information)  
24-32419-80/O  
2x 138\*1,9 FPM  
1x 140\*3,8 FPM

89-176800-83-STD  
89-70519-STDS

87-115400-02  
87-70519-STDV

06-115400-80-STD

3.000  CK KV1  
3.000  CR IKA  
6.000  CR GOE  
Goetze® LKZ-Ring®

87-100200-02  
87-70519-STDZ

06-100200-00-STD

3.000  CK KV1  
3.000  CK IKA  
6.000  CR GOE  
Goetze® LKZ-Ring®





**Motor Özellikleri**  
(Engine Specifications)

İmalatçı (Manufacturer):  
MERCEDES BENZ LKW  
Çap (Diameter): Ø 125  
FM Grup No: 5956

**OM 401LA EURO1**  
**901/970/972-975/  
977-981**

6 Sil. Dizel 9572cc  
200/230 Kw (272/313 PS)  
16,75:1  
Turbocharged Intercool  
1226, 1227, 1429, 1726,  
1727, 1827, 1831, 1838,  
2422, 2427, 2527, 2531,  
2635, 2638, 3031,  
Actros 1831,2531, O 404  
1992....

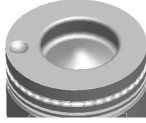
**OM 402LA EURO1**  
**901.970-973/  
976-978/982-990**

8 Sil. Dizel 12760cc 280  
Kw (381 PS) 16,75:1  
Turbocharged Intercool  
1226, 1227, 1429, 1726,  
1727, 1827, 1831, 1838,  
2422, 2427, 2527, 2531,  
2631, 2635, 2638,  
Actros 1831,2531,  
Actros 2635,  
O 404, O403-  
1992....

**Piston Ölçüleri**  
(Piston Dimensions)

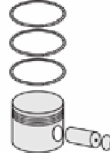
A : 87.350  
B - : 25.000  
BØ : 68.200  
BX : 3.000  
BY : 1.500  
D : 133.350  
E : 18.000

Pim: 46 x 102



**Piston Özellikleri**  
(Piston Features)

Segman Taşıyıcı  
(Ring Carrier)  
Sert Anotlama  
(Hard Anodizing)  
Gözarası Konik  
(Conical Eye Gap)



**Piston Parça No**  
(Piston Part No)

87-176000-43  
87-70520-STDIB  
0.30 mm Kısa (Short)  
87-176000-42  
87-70520-STDB

87-864600-02  
87-70520-STDC



**Segman Seti**  
(Ring Set)

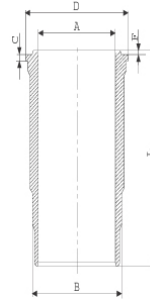
06-176000-30-STD  
3.000 PS ST  
3.000 CR IKA  
4.000 CR STD  
Goetze® LKZ-Ring®

06-864600-20-STD  
3.000 CKS KV4  
3.000 CR IKA  
4.000 CR STD  
Goetze® LKZ-Ring®

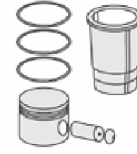


**Silindir Gömleği**  
(Liner)

14-458410-00-WH  
B : 144.500  
L : 253.000  
D : 153.800  
C : 9.920  
F : 1.000

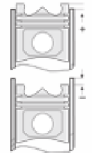


O-RING Bilgi  
(O-RING Information)  
24-35005-00/O  
2x 140\*1,9 FPM  
2x 144\*3,8 FPM



**Silindir Kit**  
(Assembly Set)

89-176000-42-STD  
89-70520-STDB



**Piston - Blok Montaj**  
**Yüksekliği**  
(Piston - Block  
Assembly Height)

+0,07 /+0,43





**Motor Özellikleri**  
(Engine Specifications)

İmalatçı (Manufacturer):  
MERCEDES BENZ LKW  
Çap (Diameter): Ø 125  
FM Grup No: 59046

**OM 401.901/924**  
6 Sil. Dizel 9570cc  
129-188 Kw (175-256 PS)  
1019, 1219, 1419, 1619, 1719  
1977 - 1982

**OM 402.901**  
8 Sil. Dizel 12756cc  
177-188 Kw (241-256 PS)  
17,5:1

**OM 403.911/933**  
10 Sil. Dizel 15950cc  
261 KW (355 PS) 17,5:1  
1632 K, 1932, 2032, 2632  
1972.....

**OM 404.901**  
12 Sil. Dizel 20910cc  
184-236 KW (250-321 PS)  
17,5:1  
1977-----1982  
1975 - 1982

**Piston Ölçüleri**  
(Piston Dimensions)

A : 81.300  
B - : 24.500  
BØ : 69.000  
BX : 6.000  
BY : 2.000  
D : 126.300  
E : 16.000

Pim: 46 x 97



**Piston Özellikleri**  
(Piston Features)

Segman Taşıyıcı  
(Ring Carrier)  
Yağ Püskürtme Oyuğu  
(Oil Jet Cut-out)  
Gözarası Düz  
(Flat Eye Gap)

**Piston Parça No**  
(Piston Part No)

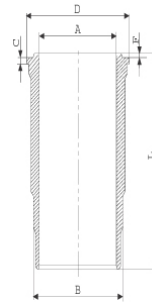
87-176800-94  
87-72590-STD

**Segman Seti**  
(Ring Set)

06-176800-80-STD  
3.000 CR KV1  
3.000 F14  
6.000 CR STD  
Goetze® LKZ-Ring®

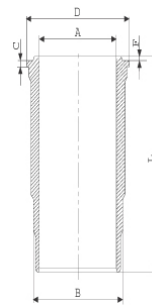
**Silindir Gömleği**  
(Liner)

14-451660-00-WH  
B : 140.000  
L : 253.500  
D : 152.000  
C : 10.070  
F : 1.000



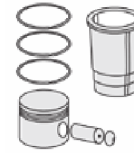
3 O-Ring Lastikli /  
O-RING Bilgi  
(3 O-Ring Elastic /  
O-RING Information)  
24-32419-80/O  
2x 138\*1,9 FPM  
1x 140\*3,8 FPM

14-457860-00-WH  
B : 140.000  
L : 253.000  
D : 152.000  
C : 10.070  
F : 1.000



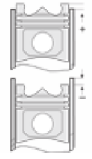
4 O-Ring Lastikli  
Dış Yüzeyi Fosfat Kaplı  
(4 O-Ring Elastic  
Outer Surface  
Phosphate Coated)

**Silindir Kit**  
(Assembly Set)



**Piston - Blok Montaj**  
Yüksekliği  
(Piston - Block  
Assembly Height)

+0,07 / +0,43

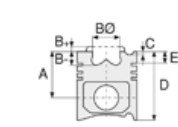




**Motor Özellikleri**  
(Engine Specifications)

İmalatçı (Manufacturer):  
MERCEDES BENZ LKW  
Çap (Diameter): Ø 125  
FM Grup No: 6033

**OM 470 Euro VI**  
6 Sil. Dizel 240  
KW/326 hp –  
335 kW/456 hp  
Actros, Antos,  
Arocs, Setra



**Piston Ölçüleri**  
(Piston Dimensions)

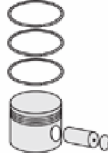
A : 68.000  
B- : 14.450  
BØ : 91.000  
C1 : 1.500  
D : 102.500  
E : 10.000

Pim: 55 x 81,5



**Piston Özellikleri**  
(Piston Features)

Soğutma Kanallı  
(Coolin Gallery)  
Gözarası Konik  
(Conical Eye Gap)



**Piston Parça No**  
(Piston Part No)

87-865100-02  
87-75507-STD  
Monosteel (Çelik Piston)



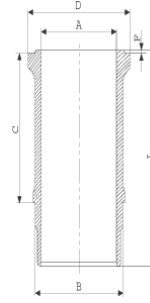
**Segman Seti**  
(Ring Set)

06-865100-00-STD  
3.500 GDC ST  
2.500 CR KV4  
3.500 CKS KV1  
Goetze® LKZ-Ring® /  
Yağ Segmanı Matkap  
Delik (Oil Ring Drill Hole)

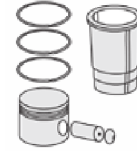


**Silindir Gömleği**  
(Liner)

15-610050-00-WH  
B : 135.000  
L : 236.500  
D : 150.000  
C : 7.000  
F : 0.500  
R : 8.900

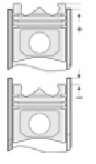


Kurum Giderme Ringli  
ve O-Ringli  
(With Scraper Rings  
and O-RING)  
24-35053-20/O  
2x 134\*141,1\*3,80 FKM



**Silindir Kit**  
(Assembly Set)

89-865100-02-STD  
89-75507-STD



**Piston - Blok Montaj**  
Yüksekliği  
(Piston - Block  
Assembly Height)

-0,19

+0,23





MERCEDES BENZ LKW - Ø 128

87-70130-STD

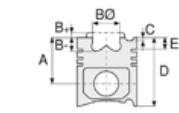


**Motor Özellikleri**  
(Engine Specifications)

İmalatçı (Manufacturer):  
MERCEDES BENZ LKW  
Çap (Diameter): Ø 128  
FM Grup No: 590123

**OM 457 CNG**

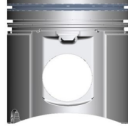
6 Sil. CNG 170  
Kw-231-354-456 Hp  
Turbo charged Inter  
Cooled 24V  
O 500, 1843, 1938,  
1944, 2638, Axor 1843,  
AXOR ÇEKİCİ 18.40 LS,  
O403, TOURISMO 15  
RHD, TOURISMO 17  
RHD, TRAVEGO 15 SHD  
2002....



**Piston Ölçüleri**  
(Piston Dimensions)

A : 86.500  
B - : 20.500  
BØ : 107.200  
D : 136.500  
E : 8.450

Pim: 52 x 103



**Piston Özellikleri**  
(Piston Features)

Segman Taşıyıcı  
(Ring Carrier)  
Soğutma Kanallı  
(Coolin Gallery)  
Yağ Püskürtme Oyuğu  
(Oil Jet Cut-out)  
Gözarası Konik  
(Conical Eye Gap)



**Piston Parça No**  
(Piston Part No)

87-876000-42  
87-70130-STD



**Segman Seti**  
(Ring Set)

06-876000-20-STD

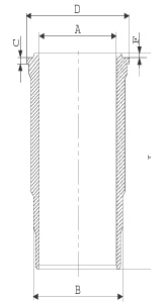
3.000 CK ST  
3.000 CR GOE  
4.000 CK KV1

Goetze® LKZ-Ring® /  
Yağ Segmanı Matkap  
Delikli (Oil Ring Drill  
Perforated)

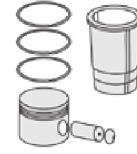


**Silindir Gömleği**  
(Liner)

14-450380-00-WH  
B : 144.500  
L : 266.300  
D : 155.480  
C : 10.120  
F : 1.100

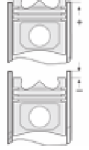


O-RİNG Bilgi  
(O-RING Information)  
24-35042-40/O  
2x 144\*154\*7 FPM  
1 ADET SHIM



**Silindir Kit**  
(Assembly Set)

89-876000-42-STD  
89-70130-STD



**Piston - Blok Montaj**  
Yüksekliği  
(Piston - Block  
Assembly Height)







**Motor Özellikleri**  
(Engine Specifications)

İmalatçı (Manufacturer):  
MERCEDES BENZ LKW  
Çap (Diameter): Ø 128  
FM Grup No: 5962

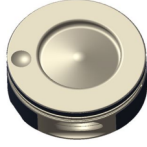
**OM 447HLA EURO2.**  
**904-907/970-979..**

6 Sil. Dizel 11967cc  
157-220 Kw (214-300 PS)  
18:1  
Turbocharged Intercool  
O 345, O 405,  
O 407, O 408  
1984....

**Piston Ölçüleri**  
(Piston Dimensions)

A : 89.930  
B- : 23.880  
BØ : 75.150  
BX : 3.000  
BY : 1.170  
D : 139.930  
E : 23.250

Pim: 46 x 105



**Piston Özellikleri**  
(Piston Features)

Segman Taşıyıcı  
(Ring Carrier)  
Sert Anotlama  
(Hard Anodizing)  
Yağ Püskürtme Oyuğu  
(Oil Jet Cut-out)  
Gözarası Konik  
(Conical Eye Gap)



**Piston Parça No**  
(Piston Part No)

87-179300-02  
87-70504-STD  
  
87-179300-03  
87-70504-STD1  
0,30 mm Kısa (Short)



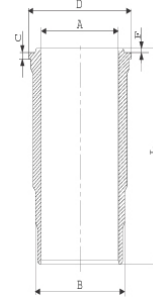
**Segman Seti**  
(Ring Set)

06-179300-20-STD  
  
3.000 PS ST  
3.000 CR IKA  
4.000 CK STD  
Goetze® LKZ-Ring®



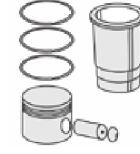
**Silindir Gömleği**  
(Liner)

14-456980-00-WH  
B : 144.500  
L : 270.000  
D : 153.800  
C : 9.920  
F : 1.000



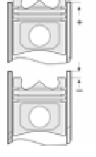
O-RİNG Bilgi  
(O-RING Information)  
24-26802-00/O  
1x 140\*1,9 FPM  
2x 144\*3,8 FPM  
1 ADET SHIM

14-456980-00-WH  
O-RİNG Bilgi  
(O-RING Information)  
24-26802-00/O  
1x 140\*1,9 FPM  
2x 144\*3,8 FPM  
1 ADET SHIM



**Silindir Kit**  
(Assembly Set)

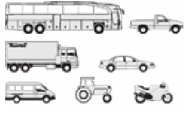
89-179300-02-STD  
89-70504-STD



**Piston - Blok Montaj**  
Yüksekliği  
(Piston - Block  
Assembly Height)

+ 0,07 / + 0,43





**Motor Özellikleri**  
(Engine Specifications)

İmalatçı (Manufacturer):  
MERCEDES BENZ LKW  
Çap (Diameter): Ø 128  
FM Grup No: 59033

**OM 421A.901/905/  
906/907/908/910**

6 Sil. Dizel 10965cc  
185-390 KW  
( 250 -530 PS ) 16.25:1  
V 6 TURBO  
1622, 1628, 2228,  
Endüstriyel (Industrial)  
1985....

**OM 421LA.901**

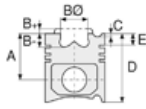
6 Sil. Dizel 10966cc 16.25:1  
V 6 TURBO  
INTERCOOLED  
Endüstriyel (Industrial)  
1979....

**OM 422A.901/951/  
952/954/956/957/  
958/963**

8 Sil. Dizel 14618cc  
184-390 ( 250-330 PS )  
16.25:1  
V 8 TURBO  
0303, 1633, 1933, 2033,  
2233, 2433, 2633, 2833,  
3033, 3333  
1979....

**OM 422LA.901/  
953/955/959**

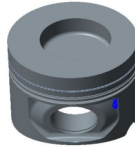
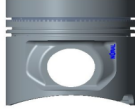
8 Sil. Dizel 14618cc  
184-390 ( 250-530 PS )  
16.25:1  
TURBO INTERCOOLER  
1638, 1938, 2238,  
2638, 3338  
1980....



**Piston Ölçüleri**  
(Piston Dimensions)

A : 81.300  
B- : 25.400  
BØ : 70.000  
BX : 3.000  
BY : 1.500  
D : 126.300  
E : 21.170

Pim: 46 x 99



**Piston Özellikleri**  
(Piston Features)

Segman Taşıyıcı  
(Ring Carrier)  
Yağ Püskürtme Oyuğu  
(Oil Jet Cut-out)  
Gözarası Düz  
(Flat Eye Gap)



**Piston Parça No**  
(Piston Part No)

87-70505-STD  
87-70505-STD



**Segman Seti**  
(Ring Set)

06-179300-20-STD

3.000 PS ST  
3.000 CR IKA  
4.000 CR STD

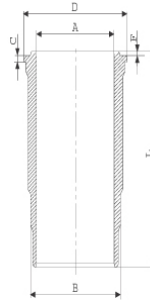
Goetze® LKZ-Ring®



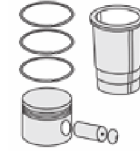
**Silindir Gömleği**  
(Liner)

14-452030-00-WH

B : 144.500  
L : 253.000  
D : 153.800  
C : 9.920  
F : 1.000

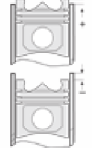


O-RİNG Bilgi  
(O-RING Information)  
24-26802-00/O  
2x 144\*3,8 FPM  
1x 140\*1,9 FPM  
1 ADET SHIM



**Silindir Kit**  
(Assembly Set)

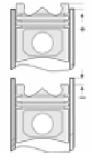
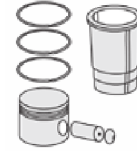
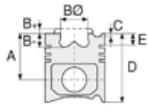
89-70505-STD-STD  
89-70505-STD



**Piston - Blok Montaj**  
Yüksekliği  
(Piston - Block  
Assembly Height)

+0,07 / +0,43





**Motor Özellikleri**  
(Engine Specifications)

**Piston Ölçüleri**  
(Piston Dimensions)

**Piston Parça No**  
(Piston Part No)

**Segman Seti**  
(Ring Set)

**Silindir Gömleği**  
(Liner)

**Silindir Kit**  
(Assembly Set)

**Piston - Blok Montaj**  
Yüksekliği  
(Piston - Block  
Assembly Height)

**OM 423A.901**  
10 Sil. Dizel 18273cc  
270-301Kw ( 367 PS )  
16.25:1  
V 10 TURBO  
Endüstriyel (Industrial)  
1966....

**OM 423LA**  
10 Sil. Dizel 18273cc  
368Kw ( 500 PS ) 16.25:1  
V 10 TURBO  
INTERCOOLER  
3250, 3850, 4050  
1979....

**OM 424A**  
12 Sil. Dizel 21927cc  
390-404 KW  
( 530-550 PS ) 16.25:1  
V 12 TURBO  
Endüstriyel (Industrial)  
1979....

**OM 424LA**  
12 Sil. Dizel 21927cc  
404-452Kw ( 549-614 PS )  
16.25:1  
V 12 TURBO  
INTERCOOLER  
Endüstriyel (Industrial)  
1979....





**Motor Özellikleri**  
(Engine Specifications)

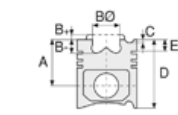
İmalatçı (Manufacturer):  
MERCEDES BENZ LKW  
Çap (Diameter): Ø 128  
FM Grup No: 59031

**OM422LA.901/  
953/955/959**

8 Sil. Dizel 14618cc  
184-390Kw(250-530 Ps)  
16,25:1  
TURBO INTERCOOLER  
1245, 1644, 1748, 1750,  
1850, 1944, 1948, 2244,  
2448, 2550, 2644, 2648,  
2650, 3050, 3248, 3250,  
3344, 3544, 3548, 3550,  
4044, 4844, 5248,  
Actros 2644  
1980....

**OM442LA**

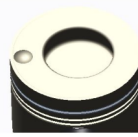
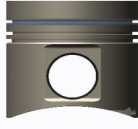
8 Sil. Dizel 14618cc  
320-368Kw(435-500Ps)  
16,25:1  
TURBO INTERCOOLER  
1245, 1644, 1748, 1750,  
1850, 1944, 1948, 2244,  
2448, 2550, 2644, 2648,  
2650, 3050, 3248, 3250,  
3344, 3544, 3548, 3550,  
4044, 4844, 5248  
1985 - 1990



**Piston Ölçüleri**  
(Piston Dimensions)

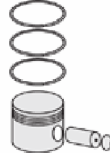
A : 81.350  
B - : 26.000  
BØ : 65.440  
BX : 3.000  
BY : 1.500  
D : 126.350  
E : 21.100

Pim: 46 x 105



**Piston Özellikleri**  
(Piston Features)

Segman Taşıyıcı  
(Ring Carrier)  
Sert Anotlama  
(Hard Anodizing)  
Yağ Püskürtme Oyuğu  
(Oil Jet Cut-out)  
Burçlu Piston  
(Bushing Piston)  
Gözarası Düz  
(Flat Eye Gap)



**Piston Parça No**  
(Piston Part No)

87-179300-52  
87-70509-STD A



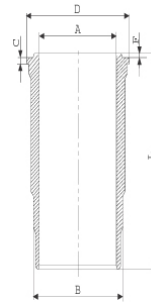
**Segman Seti**  
(Ring Set)

06-179300-20-STD  
3.000 PS ST  
3.000 CR IKA  
4.000 CR STD  
Goetze® LKZ-Ring®



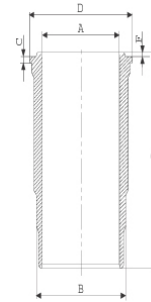
**Silindir Gömleği**  
(Liner)

14-452030-00-WH  
B : 144.500  
L : 253.000  
D : 153.800  
C : 9.920  
F : 1.000

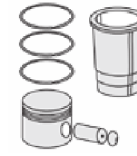


O-RİNG Bilgi  
(O-RING Information)  
24-26802-00/O  
2x 144\*3,8 FPM  
1x 140\*1,9 FPM  
1 ADET SHIM

14-451160-00-WH  
B : 144.500  
L : 253.000  
D : 153.800  
C : 10.070  
F : 1.000

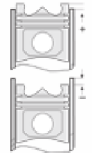


O-RİNG Bilgi  
(O-RING Information)  
24-35005-00/O  
2x 140\*1,9 FPM  
2x 144\*3,8 FPM



**Silindir Kit**  
(Assembly Set)

89-179300-52-STD  
89-70509-STD A



**Piston - Blok Montaj**  
Yüksekliği  
(Piston - Block  
Assembly Height)

+ 0,07 / + 0,43





MERCEDES BENZ LKW - Ø 128

87-70510-STDC

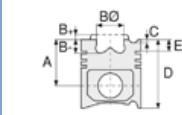


**Motor Özellikleri**  
(Engine Specifications)

İmalatçı (Manufacturer):  
MERCEDES BENZ LKW  
Çap (Diameter): Ø 128  
FM Grup No: 5992

**OM 457 LA EURO3**

6 Sil. Dizel 12000cc  
400 PS  
Turbo Charged  
InterCooled 24v  
O 500, 1843, 1938,  
1944, 2638, 2639,  
Axor 1843, AXOR ÇEKİCİ  
18.35 LS, AXOR ÇEKİCİ  
18.40 LS, O403,  
TOURISMO 15 RHD,  
TOURISMO 17 RHD  
2002....



**Piston Ölçüleri**  
(Piston Dimensions)

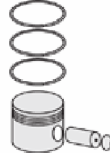
A : 90.050  
B- : 16.000  
BØ : 93.150  
D : 140.050  
E : 12.000

Pim: 52 x 103



**Piston Özellikleri**  
(Piston Features)

Segman Taşıyıcı  
(Ring Carrier)  
Soğutma Kanallı  
(Coolin Gallery)  
Yağ Püskürtme Oyuğu  
(Oil Jet Cut-out)  
Gözarası Konik  
(Conical Eye Gap)



**Piston Parça No**  
(Piston Part No)

87-876000-23  
87-70510-STD1C  
0,30 mm Kısa (Short)

87-876000-24  
87-70510-STD2C  
0,60 mm Kısa (Short)

87-876000-22  
87-70510-STDC

87-876000-22  
87-70510-STDF



**Segman Seti**  
(Ring Set)

06-876000-20-STD

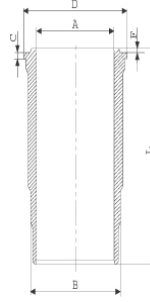
3.000 CK ST  
3.000 CR GOE  
4.000 KV KV1

Goetze® LKZ-Ring® /  
Yağ Segmanı Matkap  
Delikli (Oil Ring Drill  
Perforated)



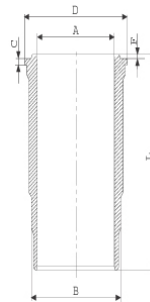
**Silindir Gömleği**  
(Liner)

14-450380-00-WH  
B : 144.500  
L : 266.300  
D : 155.480  
C : 10.120  
F : 1.100

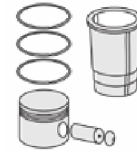


O-RİNG Bilgi  
(O-RING Information)  
24-35042-40/O  
2x 144\*154\*7 FPM  
1 ADET SHIM

14-450670-00-WH  
B : 144.500  
L : 266.300  
D : 155.450  
C : 10.120  
F : 1.100

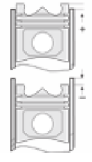


Flanş Çapı Küçük /  
O-RING Bilgi  
(Flange Diameter  
Small / O-RING  
Information)  
24-35042-40/O  
2x 144\*154\*7 FPM  
1 ADET SHIM



**Silindir Kit**  
(Assembly Set)

89-876000-22-STD  
89-70510-STDC



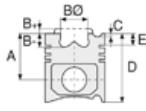
**Piston - Blok Montaj**  
Yüksekliği  
(Piston - Block  
Assembly Height)

+0,22 / +0,71





**Motor Özellikleri**  
(Engine Specifications)



**Piston Ölçüleri**  
(Piston Dimensions)



**Piston Parça No**  
(Piston Part No)

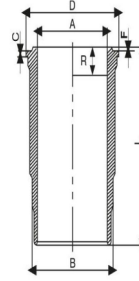


**Segman Seti**  
(Ring Set)

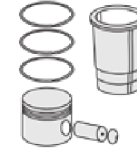


**Silindir Gömleği**  
(Liner)

15-451070-00-WH  
B : 144.500  
L : 266.300  
D : 155.600  
C : 10.120  
F : 1.100  
R : 6.500

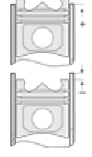


Kurum Giderme Ve  
O-RİNGLİ /  
O-RING Bilgi  
(Soot Removal And  
With O-RING /  
O-RING Information)  
24-35045-70/O  
2x 144\*154\*7 FPM  
1x 132,5\*137\*3,90 FPM  
1ADET SHIM



**Silindir Kit**  
(Assembly Set)

89-876000-52-STD  
89-70510-STD



**Piston - Blok Montaj**  
Yüksekliği  
(Piston - Block  
Assembly Height)

14-450380-00-WH  
O-RİNG Bilgi  
(O-RING Information)  
24-35042-40/O  
2x 144\*154\*7 FPM  
1 ADET SHIM

89-876000-23-STD  
89-70510-STDIC

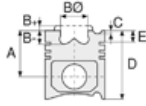
15-451070-00-WH  
Kurum Giderme Ve  
O-RİNGLİ /  
O-RING Bilgi  
(Soot Removal And  
With O-RING /  
O-RING Information)  
24-35045-70/O  
2x 144\*154\*7 FPM  
1x 132,5\*137\*3,90 FPM  
1ADET SHIM

89-876000-53-STD  
89-70510-STDIF





**Motor Özellikleri**  
(Engine Specifications)



**Piston Ölçüleri**  
(Piston Dimensions)



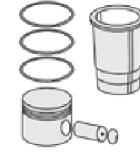
**Piston Parça No**  
(Piston Part No)



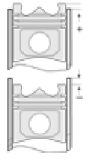
**Segman Seti**  
(Ring Set)



**Silindir Gömleği**  
(Liner)



**Silindir Kit**  
(Assembly Set)



**Piston - Blok Montaj**  
**Yüksekliği**  
(Piston - Block  
Assembly Height)

14-450380-00 WH  
O-RİNG Bilgi  
(O-RING Information)  
24-35042-40/O  
2x 144\*154\*7 FPM  
1 ADET SHIM

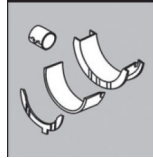
89-876000-24-STD  
89-70510-STD2C

14-451070-00-WH  
B : 144.500  
L : 266.300  
D : 155.600  
C : 10.120  
F : 1.100  
R : 6.500

89-876000-54-STD  
89-70510-STD2F

Kurum Giderme Ve  
O-RİNGLİ /  
O-RING Bilgi  
(Soot Removal And  
With O-RING /  
O-RING Information)  
24-35045-70/O  
2x 144\*154\*7 FPM  
1x 132,5\*137\*3,90 FPM  
1 ADET SHIM

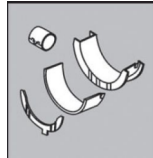
**ANA YATAK**  
(MAIN BED)



H 075/7 STD

Sputter Alt Parça (Sputter Lower Part)

**KOL YATAK**  
(ARM BED)



71-3893/6

STD, 0,25 MM  
Stupper Üst Parça (Stupper Upper Part)

**SİL. KAPAK. CONTA**  
(CYLINDER HEAD GASKET)



30-030171-00

Çelik (Steel)





**Motor Özellikleri**  
(Engine Specifications)

İmalatçı (Manufacturer):  
MERCEDES BENZ LKW  
Çap (Diameter): Ø 128  
FM Grup No: 5994

**OM441LA EURO2**

6 Sil. Dizel 10964cc  
180/250 KW  
(245/340 PS) 17,25:1  
Turbo , Intercool  
1234, 1424, 1427, 1733,  
1824, 1831, 1834, 2024,  
2031, 2524, 2527, 2531,  
2631, 3233, 3234,  
3534, O404  
1991....

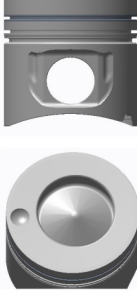
**OM442LA EURO2**

8 Sil. Dizel 14618cc  
320/390 KW  
(435/530 PS) 17,25:1  
Turbo , Intercool  
1835, 1838, 1844, 1850,  
1853, 2038, 2044, 2050,  
2535, 2538, 2544, 2550,  
2553, 2629, 2638, 2644,  
2650, 2653, 3238, 3244,  
3253, 3538, 3544, 3550,  
3553, 4838, 4844, 4853,  
Actros 1844, O 404  
1995....

**Piston Ölçüleri**  
(Piston Dimensions)

A : 81.350  
B- : 24.000  
BØ : 72.500  
BX : 3.000  
BY : 1.500  
D : 126.350  
E : 18.050

Pim: 46 x 105



**Piston Özellikleri**  
(Piston Features)

Segman Taşıyıcı  
(Ring Carrier)  
Soğutma Kanallı  
(Coolin Gallery)  
Yağ Püskürtme Oyuğu  
(Oil Jet Cut-out)  
Gözarası Konik  
(Conical Eye Gap)



**Piston Parça No**  
(Piston Part No)

87-179300-92  
87-70511-STD



**Segman Seti**  
(Ring Set)

06-179300-20-STD

3.000 PS ST  
3.000 CR IKA  
4.000 CK STD

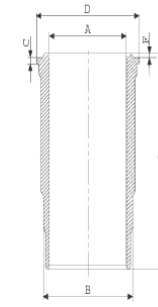
Goetze® LKZ-Ring®



**Silindir Gömleği**  
(Liner)

14-452030-00-WH

B : 144.500  
L : 253.000  
D : 153.800  
C : 9.920  
F : 1.000

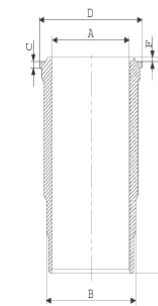


**O-RİNG Bilgi**  
(O-RING Information)

24-26802-00/O  
2x 144\*3,8 FPM  
1x 140\*1,9 FPM  
1 ADET SHIM

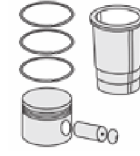
14-451160-00-WH

B : 144.500  
L : 253.000  
D : 153.800  
C : 10.070  
F : 1.000



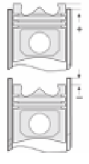
**O-RING Bilgi**  
(O-RING

Information)  
24-35005-00/O  
2x 140\*1,9 FPM  
2x 144\*3,8 FPM



**Silindir Kit**  
(Assembly Set)

89-179300-92-STD  
89-70511-STD

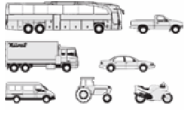


**Piston - Blok Montaj**  
Yüksekliği  
(Piston - Block  
Assembly Height)

-0,07 / +0,43







**Motor Özellikleri**  
(Engine Specifications)

İmalatçı (Manufacturer):  
MERCEDES BENZ LKW  
Çap (Diameter): Ø 128  
FM Grup No: 5996

**OM 441LA EURO1**  
**980/986/989/993**

6 Sil. Dizel 10960cc  
250 KW  
(340 PS) 16,75:1  
Turbo Intercool  
1234, 1733, 1834, 2433,  
2534, 3234, O404  
1991....

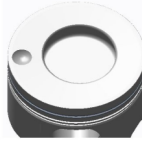
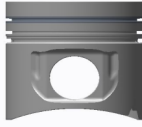
**OM442LA EURO1**

8 Sil. Dizel 14618cc 320  
KW (435 PS) 16,75:1  
Turbo Intercool  
1750, 1838, 1844, 1850,  
1948, 2044, 2050, 2448,  
2538, 2544, 2550, 2635,  
2638, 2644, 2648, 2650,  
3244, 3250, 3538, 3548,  
3550, 4850, Actros 1844,  
Actros 1853, O404  
1992....

**Piston Ölçüleri**  
(Piston Dimensions)

A : 81.350  
B- : 24.300  
BØ : 66.900  
BX : 3.000  
BY : 1.500  
D : 126.350  
E : 18.050

Pim: 46 x 105



**Piston Özellikleri**  
(Piston Features)

Segman Taşıyıcı  
(Ring Carrier)  
Soğutma Kanallı  
(Coolin Gallery)  
Yağ Püskürtme Oyuğu  
(Oil Jet Cut-out)  
Gözarası Konik  
(Conical Eye Gap)



**Piston Parça No**  
(Piston Part No)

87-179300-94  
87-70514-STD



**Segman Seti**  
(Ring Set)

06-179300-20-STD

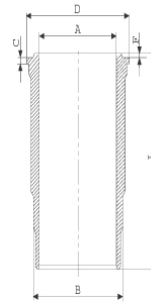
3.000 PS ST  
3.000 CR IKA  
4.000 CK STD

Goetze® LKZ-Ring®



**Silindir Gömleği**  
(Liner)

14-452030-00-WH  
B : 144.500  
L : 253.000  
D : 153.800  
C : 9.920  
F : 1.000

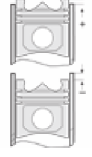


O-RİNG Bilgi  
(O-RING Information)  
24-26802-00/O  
2x 144\*3,8 FPM  
1x 140\*1,9 FPM  
1 ADET SHIM



**Silindir Kit**  
(Assembly Set)

89-179300-94-STD  
89-70514-STD



**Piston - Blok Montaj**  
Yüksekliği  
(Piston - Block  
Assembly Height)

+0,17 / +0,53





MERCEDES BENZ LKW - Ø 128

87-70516-STD



**Motor Özellikleri**  
(Engine Specifications)

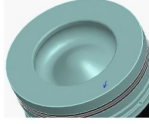
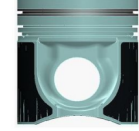
İmalatçı (Manufacturer):  
MERCEDES BENZ LKW  
Çap (Diameter): Ø 128  
FM Grup No: 6022

**OM 355**  
6 Sil. Dizel 11581cc  
169-207 KW  
(230-240 HP) 17,2:1  
1968 - 1984

**Piston Ölçüleri**  
(Piston Dimensions)

A : 90.560  
B- : 23.000  
BØ : 77.000  
D : 140.560

Pim: 48 x 103



**Piston Özellikleri**  
(Piston Features)

Segman Taşıyıcı  
(Ring Carrier)  
Gözarası Konik  
(Conical Eye Gap)



**Piston Parça No**  
(Piston Part No)

87-877607-03  
87-70516-050  
  
87-877611-03  
87-70516-100  
0,30 mm Kısa (Short)  
  
87-877600-03  
87-70516-STD  
  
87-877600-04  
87-70516-STD1  
0,60 mm Kısa (Short)

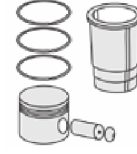


**Segman Seti**  
(Ring Set)

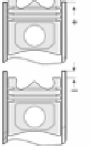
06-877600-00-STD  
06-877607-00 0,50 mm  
06-877611-00 1,00 mm  
  
3.000 CKS KV4  
2.500 CRP F14  
4.000 CRP GOE  
  
Goetze® LKZ-Ring®



**Silindir Gömleği**  
(Liner)



**Silindir Kit**  
(Assembly Set)



**Piston - Blok Montaj**  
Yüksekliği  
(Piston - Block  
Assembly Height)

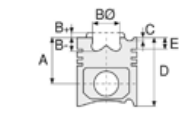




**Motor Özellikleri**  
(Engine Specifications)

İmalatçı (Manufacturer):  
MERCEDES BENZ LKW  
Çap (Diameter): Ø 128  
FM Grup No: 59040

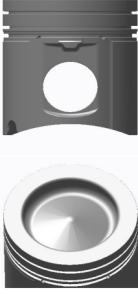
**OM 457 LA EURO 2**  
6 Sil. Dizel 11970cc  
185,220,260  
KW (252,299,354) 17.75:1  
Turbo,LLK  
CITARO, O 415,  
O 530, O 580  
1997....



**Piston Ölçüleri**  
(Piston Dimensions)

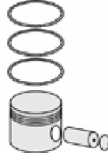
A : 90.050  
B - : 18.000  
BØ : 89.500  
D : 140.050  
E : 12.000

Pim: 52 x 103



**Piston Özellikleri**  
(Piston Features)

Segman Taşıyıcı  
(Ring Carrier)  
Soğutma Kanallı  
(Coolin Gallery)  
Yağ Püskürtme Oyuğu  
(Oil Jet Cut-out)  
Gözarası Konik  
(Conical Eye Gap)



**Piston Parça No**  
(Piston Part No)

87-179350-02  
87-70518-STD A



**Segman Seti**  
(Ring Set)

06-179350-20-STD

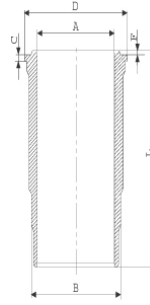
3.000 PS ST  
3.000 CR IKA  
4.000 CR STD

Goetze® LKZ-Ring® /  
Yağ Segmanı Matkap  
Delikli (Oil Ring Drill  
Perforated)

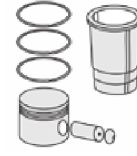


**Silindir Gömleği**  
(Liner)

14-450480-00-WH  
B : 144.500  
L : 266.300  
D : 155.600  
C : 10.120  
F : 1.100

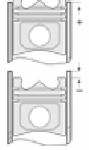


Dış Yüzeyi Krom Kaplı /  
O-RING Bilgi  
(Outer Surface  
Chrome Plated /  
O-RING Information)  
24-35042-40/O  
2x 144\*154\*7 FPM  
1 ADET SHIM



**Silindir Kit**  
(Assembly Set)

89-179350-02-STD  
89-70518-STD A



**Piston - Blok Montaj**  
Yüksekliği  
(Piston - Block  
Assembly Height)



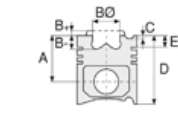


**Motor Özellikleri**  
(Engine Specifications)

İmalatçı (Manufacturer):  
MERCEDES BENZ LKW  
Çap (Diameter): Ø 128  
FM Grup No: 5957

**OM 355.910-918/  
960-967/972**

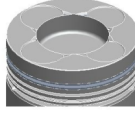
6 Sil. Dizel 11581cc  
136/176  
(185/240 PS) 17,2:1  
1424, 1621, 1623,  
1624, 1921, 1923,  
1924, 2224, 2623,  
2624, O 302, O 317  
1967 - 1978



**Piston Ölçüleri**  
(Piston Dimensions)

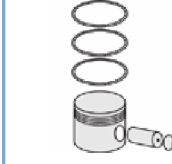
A : 90.260  
B - : 27.000  
BØ : 70.000  
C1 : 1.100  
D : 161.260  
E : 23.300

Pim: 48 x 108



**Piston Özellikleri**  
(Piston Features)

Segman Taşıyıcı  
(Ring Carrier)  
Gözarası Düz  
(Flat Eye Gap)



**Piston Parça No**  
(Piston Part No)

87-176900-53  
87-70521-STD1F  
0,20 mm Kısa (Short)

87-176900-54  
87-70521-STD2F  
0,40 mm Kısa (Short)

87-176900-52  
87-70521-STD F

87-176907-52  
87-70521-050F

87-176911-52  
87-70521-100F

87-176914-52  
87-70521-150F

87-176900-62  
87-70521-STDH

87-176907-62  
87-70521 050H

87-176911-62  
87-70521 100H



**Segman Seti**  
(Ring Set)

06-176900-80-STD  
06-176907-80 0,50 mm  
06-176911-80 1,00 mm  
06-176914-80 1,50 mm

3.500 CK KVI  
3.500 STD  
3.500 STD  
6.500 CR STD

Goetze® LKZ-Ring®

06-176900-40-STD  
06-176907-40 0,50 mm  
06-176911-40 1,00 mm

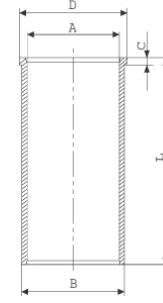
3.500 CK KVI  
3.500 GOE  
3.500 GOE  
6.500 CR GOE

Goetze® LKZ-Ring®



**Silindir Gömleği**  
(Liner)

14-025890-00-D  
B : 133.565  
L : 287.500  
D : 137.500  
C : 5.500



STD

14-025891-00-D  
B : 134.065  
L : 287.500  
D : 138.000  
C : 5.500

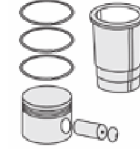
Dış Çap 0,50mm Farklı  
(Outer Diameter  
0,50 mm Different)

14-025892-00-D  
B : 134.565  
L : 287.500  
D : 138.500  
C : 5.500

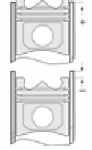
Dış Çap 1,00mm Farklı  
(Outer Diameter  
1,00 mm Different)

14-025893-00-D  
B : 135.065  
L : 287.500  
D : 139.000  
C : 5.500

Dış Çap 1,50 mm Farklı  
(Outer Diameter  
1,50 mm Different)



**Silindir Kit**  
(Assembly Set)



**Piston - Blok Montaj**  
Yüksekliği  
(Piston - Block  
Assembly Height)

- 0,09 / +0,30





**Motor Özellikleri**  
(Engine Specifications)

İmalatçı (Manufacturer):  
MERCEDES BENZ LKW  
Çap (Diameter): Ø 128  
FM Grup No: 5958

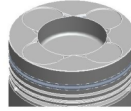
**OM 355A.968/  
969/978**

6 Sil. Dizel 11900cc  
206/210 KW  
(280/285 PS) 16,5:1  
Turbo  
1928, 2628, O 303  
1978....

**Piston Ölçüleri**  
(Piston Dimensions)

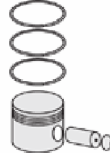
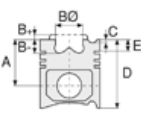
A : 90.260  
B- : 28.500  
BØ : 70.000  
C1 : 2.000  
C2 : 2.200  
D : 161.060  
E : 23.300

Pim: 48 x 108



**Piston Özellikleri**  
(Piston Features)

Segman Taşıyıcı  
(Ring Carrier)  
Gözarası Düz  
(Flat Eye Gap)



**Piston Parça No**  
(Piston Part No)

87-176900-32  
87-70522-STDB  
  
87-176907-32  
87-70522 050B  
  
87-176911-32  
87-70522 100B  
  
87-176914-32  
87-70522 150B

87-176900-82  
87-70522-STDC

87-176907-82  
87-70522 0,50C



**Segman Seti**  
(Ring Set)

06-176900-80-STD  
06-176907-80 0,50 mm  
06-176911-80 1,00 mm  
06-176914-80 1,50 mm

3.500 CK KV1  
3.500 STD  
3.500 STD  
6.500 CR STD

Goetze® LKZ-Ring®

06-176900-40-STD  
06-176907-40 0,50 mm  
06-176911-40 1,00 mm

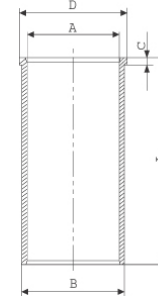
3.500 CK KV1  
3.500 GOE  
3.500 GOE  
6.500 CR GOE

Goetze® LKZ-Ring®



**Silindir Gömleği**  
(Liner)

14-025890-00-D  
B : 133.565  
L : 287.500  
D : 137.500  
C : 5.500



STD

14-025891-00-D  
B : 134.065  
L : 287.500  
D : 138.000  
C : 5.500

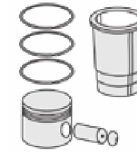
Dış Çap 0,50mm Farklı  
(Outer Diameter  
0,50 mm Different)

14-025892-00-D  
B : 134.565  
L : 287.500  
D : 138.500  
C : 5.500

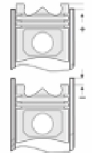
Dış Çap 1,00mm Farklı  
(Outer Diameter  
1,00 mm Different)

14-025893-00-D  
B : 135.065  
L : 287.500  
D : 139.000  
C : 5.500

Dış Çap 1,50 mm Farklı  
(Outer Diameter  
1,50 mm Different)



**Silindir Kit**  
(Assembly Set)



**Piston - Blok Montaj**  
Yüksekliği  
(Piston - Block  
Assembly Height)

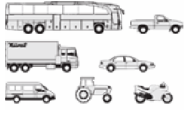
- 0,10 / + 0,22





MERCEDES BENZ LKW - Ø 128

87-70523-STD A



**Motor Özellikleri**  
(Engine Specifications)

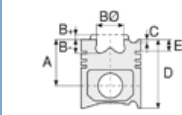
İmalatçı (Manufacturer):  
MERCEDES BENZ LKW  
Çap (Diameter): Ø 128  
FM Grup No: 5959

**OM 441A**  
6 Sil. Dizel 10960cc  
200 Kw (272 PS)  
16,25:1  
Turbo  
O 303  
1991 - 1996

**OM 441LA, OM 442LA**  
6 Sil. Dizel 10960cc  
243/249 KW  
(330/340 PS) 16,25:1  
Turbocharged  
Intercool  
1234, 1622, 1628,  
1733, 1834, 2433,  
2534, 3234  
1991 - 1996

**OM 442A.900/941/  
946/950/952/  
954/968**  
8 Sil. Dizel 14618cc  
269 KW  
(366 PS) 16,25:1  
Turbo  
1644, 1735, 1748,  
1844, 1944, 2044,  
2235, 2244, 2435,  
2448, 2535, 2544,  
2635, 2644, 3335,  
3548, O 303  
1991 - 1996

**OM 443A**  
10 Sil. Dizel 18627cc  
340 KW  
(462 PS) 16,25:1  
Turbo Motor  
no:622824-->  
Endüstriyel (Industrial)  
1991 - 1996



**Piston Ölçüleri**  
(Piston Dimensions)

A : 81.300  
B - : 27.500  
BØ : 66.600  
BX : 2.800  
BY : 1.500  
D : 126.350  
E : 17.900

Pim: 46 x 105



**Piston Özellikleri**  
(Piston Features)

Segman Taşıyıcı  
(Ring Carrier)  
Sert Anotlama  
(Hard Anodizing)  
Gözarası Konik  
(Conical Eye Gap)



**Piston Parça No**  
(Piston Part No)

87-179300-23  
87-70523-STD A



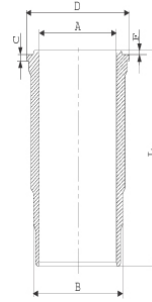
**Segman Seti**  
(Ring Set)

06-179300-20-STD  
3.000 PS ST  
3.000 CR IKA  
4.000 CR STD  
Goetze® LKZ-Ring®

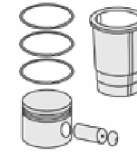


**Silindir Gömleği**  
(Liner)

14-452030-00-WH  
B : 144.500  
L : 253.000  
D : 153.800  
C : 9.920  
F : 1.000

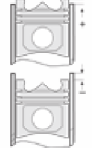


O-RING Bilgi  
(O-RING Information)  
24-26802-00/O  
2x 144\*3,8 FPM  
1x 140\*1,9 FPM  
1 ADET SHIM



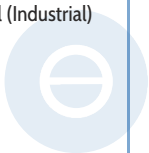
**Silindir Kit**  
(Assembly Set)

89-179300-23-STD  
89-70523-STD A



**Piston - Blok Montaj**  
Yüksekliği  
(Piston - Block  
Assembly Height)

+0,17 / +0,53



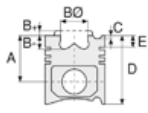


**Motor Özellikleri**  
(Engine Specifications)

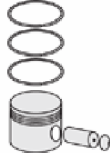
**OM 443LA**  
10 Sil. Dizel 18267cc  
412 KW  
(560 PS) 16,25:1  
Turbocharged  
Intercool Motor  
no:622824-->  
Endüstriyel (Industrial)  
1991 - 1996

**OM 444A**  
12 Sil. Dizel 21920cc  
16,25:1  
Turbo Motor  
no:012921-->  
Endüstriyel (Industrial)  
1991 - 1996

**OM 444LA**  
12 Sil. Dizel 21920cc  
498/621 KW  
(677/832 PS) 16,25:1  
Turbocharged  
Intercool Motor  
no:012921-->  
Endüstriyel (Industrial)  
1991 - 1996



**Piston Ölçüleri**  
(Piston Dimensions)



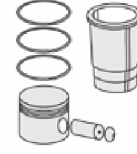
**Piston Parça No**  
(Piston Part No)



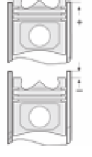
**Segman Seti**  
(Ring Set)



**Silindir Gömleği**  
(Liner)



**Silindir Kit**  
(Assembly Set)



**Piston - Blok Montaj**  
Yüksekliği  
(Piston - Block  
Assembly Height)





**Motor Özellikleri**  
(Engine Specifications)

İmalatçı (Manufacturer):  
MERCEDES BENZ LKW  
Çap (Diameter): Ø 128  
FM Grup No: 5960

**OM 421.900/901/  
906/908**

6 Sil. Dizel 10965cc  
159 KW (216 PS) 16,5:1  
1222, 1422, 1622,  
1922, 2222, O 303  
1979....

**OM 422.900/905-915**

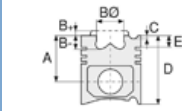
8 Sil. Dizel 14618cc  
184/206 KW  
(250/280 PS) 16,5:1  
1620, 1625, 1928,  
2028, 2228,  
2628, O 303  
1979....

**OM 423.900/905/909**

10 Sil. Dizel 18273cc  
261 KW (355 PS) 16,5:1  
1636, 1936, 2036,  
2235, 2236, 2536,  
2636, 3336, 3836  
1981....

**OM 424**

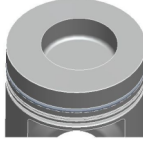
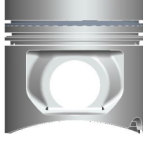
12 Sil. Dizel 21930cc  
309 KW (420 PS)  
16,5:1  
Endüstriyel (Industrial)  
1988....



**Piston Ölçüleri**  
(Piston Dimensions)

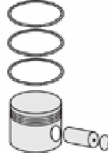
A : 81.350  
B - : 24.100  
BØ : 70.000  
BX : 3.000  
BY : 1.500  
D : 126.350  
E : 21.100

Pim: 46 x 99



**Piston Özellikleri**  
(Piston Features)

Segman Taşıyıcı  
(Ring Carrier)  
Yağ Püskürtme Oyuğu  
(Oil Jet Cut-out)  
Gözarası Düz  
(Flat Eye Gap)



**Piston Parça No**  
(Piston Part No)

87-179300-33  
87-70524-STDD  
0,20 mm Kısa (Short)  
  
87-179300-32  
87-70524-STDD



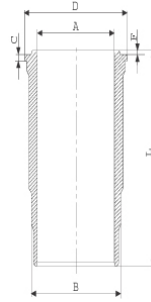
**Segman Seti**  
(Ring Set)

06-179300-20-STD  
  
3.000 PS ST  
3.000 CR IKA  
4.000 CR STD  
Goetze® LKZ-Ring®

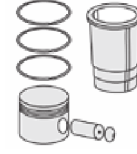


**Silindir Gömleği**  
(Liner)

14-457080-00-WH  
B : 144.500  
L : 253.000  
D : 153.800  
C : 10.070  
F : 1.000

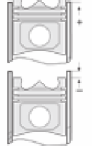


Dış Yüzeyi Krom Kaplı /  
O-RING Bilgi  
(Outer Surface  
Chrome Plated /  
O-RING Information)  
24-35005-00/O  
2x 140\*1,9 FPM  
2x 144\*3,8 FPM



**Silindir Kit**  
(Assembly Set)

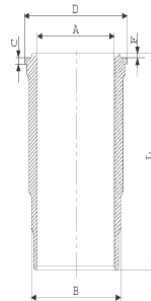
89-179300-33-STD  
89-70524-STDN



**Piston - Blok Montaj**  
Yüksekliği  
(Piston - Block  
Assembly Height)

- 0,07 / + 0,43

14-451160-00-WH  
B : 144.500  
L : 253.000  
D : 153.800  
C : 10.070  
F : 1.000



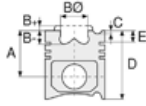
O-RING Bilgi  
(O-RING Information)  
24-35005-00/O  
2x 140\*1,9 FPM  
2x 144\*3,8 FPM



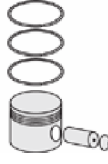




**Motor Özellikleri**  
(Engine Specifications)



**Piston Ölçüleri**  
(Piston Dimensions)



**Piston Parça No**  
(Piston Part No)

87-181700-93  
87-70524-STDT



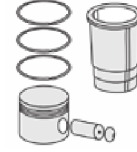
**Segman Seti**  
(Ring Set)

06-181700-80-STD  
3.000 CK KV1  
3.000 CK IKA  
4.000 CR STD  
Goetze® LKZ-Ring®



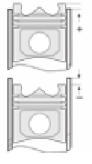
**Silindir Gömleği**  
(Liner)

14-451160-00-WH  
O-RING Bilgi  
(O-RING Information)  
24-35005-00/O  
2x 140\*1,9 FPM  
2x 144\*3,8 FPM



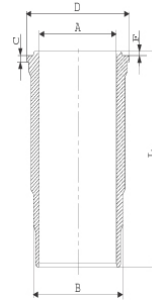
**Silindir Kit**  
(Assembly Set)

89-181700-94-STD  
89-70524-STDT



**Piston - Blok Montaj**  
Yüksekliği  
(Piston - Block  
Assembly Height)

14-452030-00-WH  
B : 144.500  
L : 253.000  
D : 153.800  
C : 9.920  
F : 1.000



O-RING Bilgi  
(O-RING Information)  
24-26802-00/O  
2x 144\*3,8 FPM  
1x 140\*1,9 FPM  
1 ADET SHIM

89-181700-93-STD  
89-70524-STDZ

87-178300-12  
87-70524-STDW

06-178300-80-STD  
3.000 PS ST  
3.000 CK IKA  
4.000 CR STD  
Goetze® LKZ-Ring®

14-451160-00-WH  
O-RING Bilgi  
(O-RING Information)  
24-35005-00/O  
2x 140\*1,9 FPM  
2x 144\*3,8 FPM

89-179300-12-STD  
89-70524-STDW

14-457080-00 WH  
Dış Yüzeyi Krom Kaplı /  
O-RING Bilgi  
(Outer Surface  
Chrome Plated /  
O-RING Information)  
24-35005-00/O  
2x 140\*1,9 FPM  
2x 144\*3,8 FPM

89-178300-32-STD  
89-70524-STDL





**Motor Özellikleri**  
(Engine Specifications)

İmalatçı (Manufacturer):  
MERCEDES BENZ LKW  
Çap (Diameter): Ø 128  
FM Grup No: 5961

**OM 421A.901-400/  
401,951**

6 Sil. Dizel 10965cc  
184 Kw (250 PS) 16,25:1  
Turbo  
O 303  
1985....

**OM 422A.901-400/  
410,952/954**

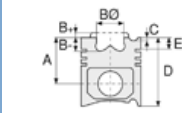
8 Sil. Dizel 14618cc  
243 Kw (330 PS) 16,25:1  
Turbo  
1633, 1635, 1933,  
2033, 2035, 2233,  
2235, 2533, 2633,  
2635, 3333, O 303  
1980....

**OM 422LA.901-500,  
953/955**

8 Sil. Dizel 14618cc  
320 Kw (435 PS) 16,25:1  
Turbocharged Intercool  
1638, 1644, 1938,  
2238, 2244,  
2638, 2644  
1980....

**OM 423A.901/  
901-400**

10 Sil. Dizel 18273cc  
301 Kw (409 PS) 16,25:1  
Turbo  
Endüstriyel (Industrial)



**Piston Ölçüleri**  
(Piston Dimensions)

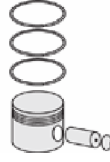
A : 81.350  
B- : 25.400  
BØ : 70.000  
BX : 3.000  
BY : 1.500  
D : 126.350  
E : 21.100

Pim: 46 x 105



**Piston Özellikleri**  
(Piston Features)

Segman Taşıyıcı  
(Ring Carrier)  
Yağ Püskürtme Oyuğu  
(Oil Jet Cut-out)  
Gözarası Konik  
(Conical Eye Gap)



**Piston Parça No**  
(Piston Part No)

87-179300-43  
87-70525-STDB



**Segman Seti**  
(Ring Set)

06-179300-20-STD

3.000 PS ST  
3.000 CR IKA  
4.000 CR STD

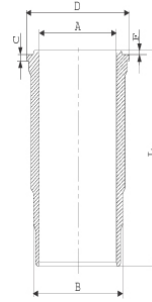
Goetze® LKZ-Ring®



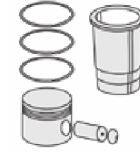
**Silindir Gömleği**  
(Liner)

14-457080-00-WH

B : 144.500  
L : 253.000  
D : 153.800  
C : 10.070  
F : 1.000

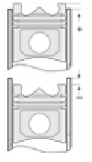


Dış Yüzeyi Krom Kaplı /  
O-RING Bilgi  
(Outer Surface  
Chrome Plated /  
O-RING Information)  
24-35005-00/O  
2x 140\*1,9 FPM  
2x 144\*3,8 FPM



**Silindir Kit**  
(Assembly Set)

89-179300-43-STD  
89-70525-STDB

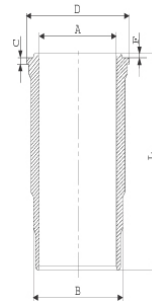


**Piston - Blok Montaj**  
Yüksekliği  
(Piston - Block  
Assembly Height)

- 0,07 / + 0,43

14-452030-00-WH

B : 144.500  
L : 253.000  
D : 153.800  
C : 9.920  
F : 1.000



O-RING Bilgi  
(O-RING Information)  
24-26802-00/O  
2x 144\*3,8 FPM  
1x 140\*1,9 FPM  
1 ADET SHIM

89-179300-14-STD  
89-70525-STDJ

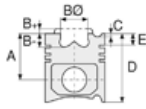




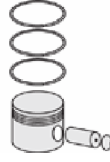
**Motor Özellikleri**  
(Engine Specifications)

**OM 424A**  
12 Sil. Dizel 21927cc  
257/441 Kw  
(350/600 PS) 16,25:1  
Turbo  
Endüstriyel (Industrial)  
1981....

**OM 424LA**  
12 Sil. Dizel 21927cc  
404/452 Kw  
(549/615 PS) 16,25:1  
Turbocharged Intercool  
1633, 1638, 1933, 1938,  
2633, 2638, 3333  
1981....



**Piston Ölçüleri**  
(Piston Dimensions)



**Piston Parça No**  
(Piston Part No)

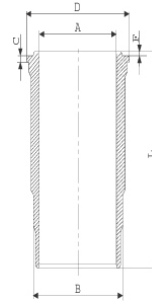


**Segman Seti**  
(Ring Set)

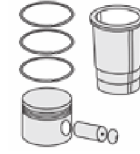


**Silindir Gömleği**  
(Liner)

14-451160-00-WH  
B : 144.500  
L : 253.000  
D : 153.800  
C : 10.070  
F : 1.000

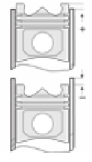


O-RING Bilgi  
(O-RING Information)  
24-35005-00/O  
2x 140\*1,9 FPM  
2x 144\*3,8 FPM



**Silindir Kit**  
(Assembly Set)

89-179300-44-STD  
89-70525-STDH



**Piston - Blok Montaj**  
Yüksekliği  
(Piston - Block  
Assembly Height)

87-181700-53  
87-70525-STDD

06-181700-80-STD  
3.000  CK KV1  
3.000  CK IKA  
4.000  CR STD  
Goetze® LKZ-Ring®

14-457080-00-WH  
Dış Yüzeyi Krom Kaplı /  
O-RING Bilgi  
(Outer Surface  
Chrome Plated /  
O-RING Information)  
24-35005-00/O  
2x 140\*1,9 FPM  
2x 144\*3,8 FPM

89-181700-53-STD  
89-70525-STDD





**Motor Özellikleri**  
(Engine Specifications)

İmalatçı (Manufacturer):  
MERCEDES BENZ LKW  
Çap (Diameter): Ø 128  
FM Grup No: 5963

**OM 441LA EURO1**  
**980/986/989/993**

6 Sil. Dizel 10960cc  
249 Kw (340 PS) 16,75:1  
Turbocharged Intercool  
1234, 1733, 1834, 1844,  
1915, 2433, 2534,  
3234, O304  
1991 - 1996

**OM 442A.900/941/**  
**946/950/952/**  
**954/968**

8 Sil. Dizel 14618cc  
269 Kw (366 PS) 16,75:1  
Turbocharged Intercool  
1735, 2435, 2535,  
2635, 3335, O 303  
1991....

**OM 443A.901**

10 Sil. Dizel 18270cc  
16,75:1  
Turbo  
Endüstriyel (Industrial)  
1991....

**Piston Ölçüleri**  
(Piston Dimensions)

A : 81.300  
B - : 24.350  
BØ : 66.600  
BX : 3.050  
BY : 1.300  
D : 126.350  
E : 17.900

Pim: 46 x 105



**Piston Özellikleri**  
(Piston Features)

Segman Taşıyıcı  
(Ring Carrier)  
Sert Anotlama  
(Hard Anodizing)  
Yağ Püskürtme Oyuğu  
(Oil Jet Cut-out)  
Gözarası Konik  
(Conical Eye Gap)



**Piston Parça No**  
(Piston Part No)

87-179300-54  
87-70526-STD1A  
0.30 mm Kısa (Short)  
  
87-179300-53  
87-70526-STD A



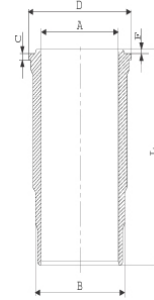
**Segman Seti**  
(Ring Set)

06-179300-20-STD  
  
3.000 PS ST  
3.000 CR IKA  
4.000 CR STD  
  
Goetze® LKZ-Ring®

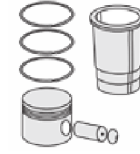


**Silindir Gömleği**  
(Liner)

14-457080-00-WH  
B : 144.500  
L : 253.000  
D : 153.800  
C : 10.070  
F : 1.000

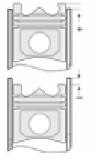


Dış Yüzeyi Krom Kaplı /  
O-RING Bilgi  
(Outer Surface  
Chrome Plated /  
O-RING Information)  
24-35005-00/O  
2x 140\*1,9 FPM  
2x 144\*3,8 FPM



**Silindir Kit**  
(Assembly Set)

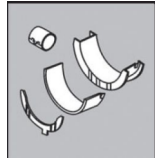
89-179300-53-STD  
89-70526-STD A



**Piston - Blok Montaj**  
**Yüksekliği**  
(Piston - Block  
Assembly Height)

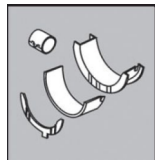
- 0,03 / + 0,33

**ANA YATAK**  
(MAIN BED)



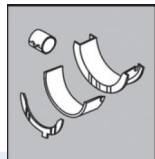
H 821/4 STD

**EKSANTRİK YATAK**  
(ECCENTRIC BED)



N 110/4 STD

**KOL BURCU**  
(CONNECTING ROD BEARING )



55-3997 STD

**SİL. KAPAK. CONTA**  
(CYLINDER HEAD GASKET)



30-026235-30





**Motor Özellikleri**  
(Engine Specifications)

İmalatçı (Manufacturer):  
MERCEDES BENZ LKW  
Çap (Diameter): Ø 128  
FM Grup No: 5964

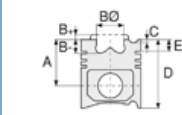
**OM 441A.950/953**  
6 Sil. Dizel 10960cc  
200 Kw (272 PS) 16,25:1  
Turbo  
Endüstriyel (Industrial)  
1991....

**OM 441LA.951/  
960-62/981-83/985**  
6 Sil. Dizel 10960cc  
249 Kw (340 PS)  
Turbocharged Intercool  
1622, 1628, 1733,  
2222, 2433  
1991....

**OM 442A.900/941/  
946/950/952/  
954/968**  
8 Sil. Dizel 14618cc  
269 Kw (366 PS)  
Turbo  
1635, 1735, 1935, 2035,  
2235, 2435, 2535, 2635,  
3235, 3335, 3535, O 303  
1991....

**OM 442LA.980/  
982/983**  
8 Sil. Dizel 14618cc  
320 Kw (435 PS)  
Turbocharged Intercool  
1644, 1748, 1844, 1944,  
2044, 2244, 2544, 2644  
1991....

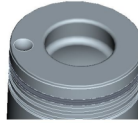
**OM 443A.901/940**  
10 Sil. Dizel 18267cc  
340 Kw (462 PS)  
Turbo Motor No 622824-->  
Endüstriyel (Industrial)  
1991....



**Piston Ölçüleri**  
(Piston Dimensions)

A : 81.450  
B- : 27.500  
BØ : 66.600  
BX : 3.000  
BY : 1.500  
D : 126.450  
E : 18.000

Pim: 46 x 105



**Piston Özellikleri**  
(Piston Features)

Segman Taşıyıcı  
(Ring Carrier)  
Sert Anotlama  
(Hard Anodizing)  
Soğutma Kanallı  
(Coolin Gallery)  
Yağ Püskürtme Oyuğu  
(Oil Jet Cut-out)  
Gözarası Konik  
(Conical Eye Gap)



**Piston Parça No**  
(Piston Part No)

87-179300-64  
87-70527-STD1A  
0,20 mm Kısa (Short)  
  
87-179300-63  
87-70527-STDA



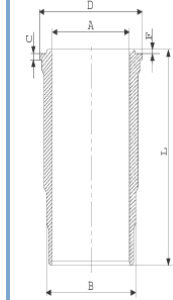
**Segman Seti**  
(Ring Set)

06-179300-20-STD  
  
3.000 PS ST  
3.000 CR IKA  
4.000 CR STD  
  
Goetze® LKZ-Ring®

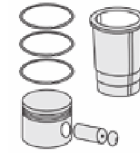


**Silindir Gömleği**  
(Liner)

14-457080-00-WH  
B : 144.500  
L : 253.000  
D : 153.800  
C : 10.070  
F : 1.000

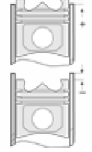


Dış Yüzeyi Krom Kaplı /  
O-RING Bilgi  
(Outer Surface  
Chrome Plated /  
O-RING Information)  
24-35005-00/O  
2x 140\*1,9 FPM  
2x 144\*3,8 FPM



**Silindir Kit**  
(Assembly Set)

89-179300-63-STD  
89-70527-STDA

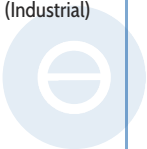


**Piston - Blok Montaj**  
Yüksekliği  
(Piston - Block  
Assembly Height)

+ 0,17 / + 0,53

14-457080-00-WH  
Dış Yüzeyi Krom Kaplı /  
O-RING Bilgi  
(Outer Surface  
Chrome Plated /  
O-RING Information)  
24-35005-00/O  
2x 140\*1,9 FPM  
2x 144\*3,8 FPM

89-179300-63-STD  
89-70527-STDA

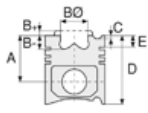




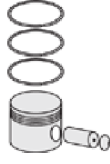
**Motor Özellikleri**  
(Engine Specifications)

**OM 443LA.901/980**  
10 Sil. Dizel 18267cc  
412 Kw (560 PS)  
Turbocharged Intercool  
Motor No 622824-->  
Endüstriyel (Industrial)  
1991....

**OM 444A**  
12 Sil. Dizel  
Endüstriyel (Industrial)



**Piston Ölçüleri**  
(Piston Dimensions)



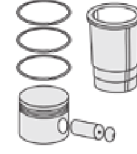
**Piston Parça No**  
(Piston Part No)



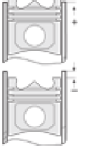
**Segman Seti**  
(Ring Set)



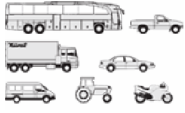
**Silindir Gömleği**  
(Liner)



**Silindir Kit**  
(Assembly Set)



**Piston - Blok Montaj**  
Yüksekliği  
(Piston - Block  
Assembly Height)



**Motor Özellikleri**  
(Engine Specifications)

İmalatçı (Manufacturer):  
MERCEDES BENZ LKW  
Çap (Diameter): Ø 128  
FM Grup No: 5965

**OM 441A.950/  
953/955**

6 Sil. Dizel 10960cc  
200 Kw (272 PS) 16,25:1  
Turbo  
O 303  
1989 - 1991

**OM 441 LA.951/  
960-962/980-983**

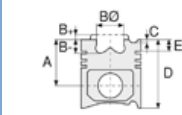
6 Sil. Dizel 10960cc  
243/249 Kw  
(330/340 PS) 16,25:1  
Turbocharged Intercool  
1234, 1622, 1628, 1733,  
1834, 2433, 2534  
1985 - 1991

**OM 442A.941-946/  
950/954-968**

8 Sil. Dizel 14618cc  
269 Kw (366 PS) 16,25:1  
Turbo  
1735, 2235, 2435, 2535,  
2635, 3335, O 303  
1985 - 1991

**OM 442 LA.951/  
953/980/982/  
983/985**

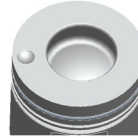
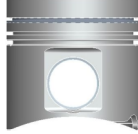
8 Sil. Dizel 14618cc  
320/362 Kw  
(435/492 PS) 16,25:1  
Turbocharged Intercool  
1644, 1748, 1844, 1944,  
2044, 2244, 2448, 2544,  
2644, 3548  
1985 - 1991



**Piston Ölçüleri**  
(Piston Dimensions)

A : 81.350  
B - : 27.500  
BØ : 66.600  
BX : 3.000  
BY : 1.500  
D : 126.350  
E : 17.900

Pim: 46 x 105



**Piston Özellikleri**  
(Piston Features)

Segman Taşıyıcı  
(Ring Carrier)  
Sert Anotlama  
(Hard Anodizing)  
Soğutma Kanallı  
(Coolin Gallery)  
Yağ Püskürtme Oyuğu  
(Oil Jet Cut-out)  
Burçlu Piston  
(Bushing Piston)  
Gözarası Düz  
(Flat Eye Gap)



**Piston Parça No**  
(Piston Part No)

87-179300-72  
87-70529-STD  
87-179300-73  
87-70529-STD1  
0,30 mm Kısa (Short)



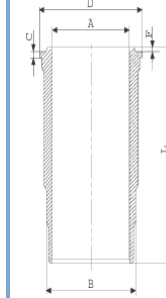
**Segman Seti**  
(Ring Set)

06-179300-20-STD  
3.000 PS ST  
3.000 CR IKA  
4.000 CR STD  
Goetze® LKZ-Ring®

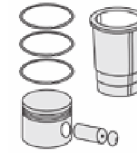


**Silindir Gömleği**  
(Liner)

14-452030-00-WH  
B : 144.500  
L : 253.000  
D : 153.800  
C : 9.920  
F : 1.000

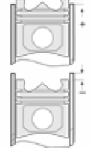


O-RING Bilgi  
(O-RING Information)  
24-26802-00/O  
2x 144\*3,8 FPM  
1x 140\*1,9 FPM  
1 ADET SHIM



**Silindir Kit**  
(Assembly Set)

89-179300-72-STD  
89-70529-STD



**Piston - Blok Montaj**  
Yüksekliği  
(Piston - Block  
Assembly Height)

- 0,10 / + 0,32





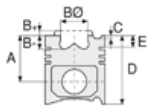
**Motor Özellikleri**  
(Engine Specifications)

**OM 443A.901/940**  
10 Sil. Dizel 18267cc  
340 Kw (462 PS) 16,25:1  
Turbo Motor No -->622823  
Endüstriyel (Industrial)  
1989 - 1991

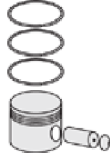
**OM 443LA.901/980**  
10 Sil. Dizel 18267cc  
412 Kw (560 PS) 16,25:1  
Turbocharged Intercool  
Motor No -->622823  
Endüstriyel (Industrial)  
1989 - 1991

**OM 444A.901**  
12 Sil. Dizel 21920cc  
16,25:1  
Turbo Motor No -->012920  
Endüstriyel (Industrial)  
1989 - 1991

**OM 444LA.901-  
500-502/508**  
12 Sil. Dizel 21920cc 16,25:1  
Turbocharged Intercool  
Motor No -->012920  
Endüstriyel (Industrial)  
1989 - 1991



**Piston Ölçüleri**  
(Piston Dimensions)



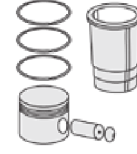
**Piston Parça No**  
(Piston Part No)



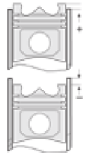
**Segman Seti**  
(Ring Set)



**Silindir Gömleği**  
(Liner)



**Silindir Kit**  
(Assembly Set)



**Piston - Blok Montaj**  
Yüksekliği  
(Piston - Block  
Assembly Height)







**Motor Özellikleri**  
(Engine Specifications)

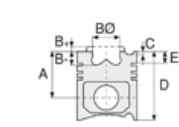
İmalatçı (Manufacturer):  
MERCEDES BENZ LKW  
Çap (Diameter): Ø 128  
FM Grup No: 5966

**OM 447HA/HLA**  
**EURO1**

6 Sil. Dizel 11970cc  
184/220 Kw  
(250/300 PS) 18:1  
Turbocharged Intercool  
O 405, O 407, O 408  
1993....

**OM 449LA EURO1**

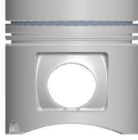
8 Sil. Dizel 9975cc  
184/220 Kw  
(250/300 PS) 18:1  
Turbocharged Intercool  
Endüstriyel (Industrial)  
1992....



**Piston Ölçüleri**  
(Piston Dimensions)

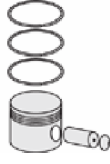
A : 90.000  
B- : 24.000  
BØ : 75.000  
BX : 2.800  
BY : 1.500  
D : 140.000  
E : 23.100

Pim: 46 x 105



**Piston Özellikleri**  
(Piston Features)

Segman Taşıyıcı  
(Ring Carrier)  
Sert Anotlama  
(Hard Anodizing)  
Yağ Püskürtme Oyuğu  
(Oil Jet Cut-out)  
Gözarası Konik  
(Conical Eye Gap)



**Piston Parça No**  
(Piston Part No)

87-179300-83  
87-70531-STD A



**Segman Seti**  
(Ring Set)

06-179300-20-STD

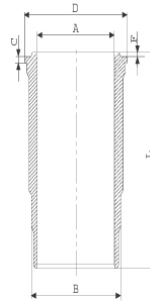
3.000 PS ST  
3.000 CR IKA  
4.000 CR STD

Goetze® LKZ-Ring®

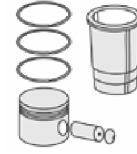


**Silindir Gömleği**  
(Liner)

14-459510-00-WH  
B : 144.500  
L : 270.000  
D : 153.800  
C : 9.920  
F : 1.000

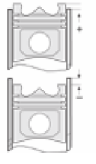


O-RING Bilgi  
(O-RING Information)  
24-26802-00/0  
1x 140\*1,9 FPM  
2x 144\*3,8 FPM  
1 ADET SHIM



**Silindir Kit**  
(Assembly Set)

89-179300-83-STD  
89-70531-STD A



**Piston - Blok Montaj**  
**Yüksekliği**  
(Piston - Block  
Assembly Height)

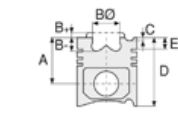




**Motor Özellikleri**  
(Engine Specifications)

İmalatçı (Manufacturer):  
MERCEDES BENZ LKW  
Çap (Diameter): Ø 128  
FM Grup No: 5999

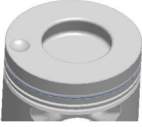
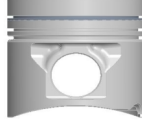
**OM442A EURO1**  
8 Sil. Dizel 14618cc  
250 KW(340 PS) 16,75:1  
Turbo  
1634, 1635, 1735, 1935,  
2235, 2435, 2535, 2635,  
3235, 3335, 3535, Actros  
2035, O 303  
1991....



**Piston Ölçüleri**  
(Piston Dimensions)

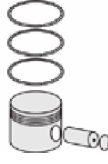
A : 81.290  
B- : 23.100  
BØ : 65.000  
BX : 3.000  
BY : 1.500  
D : 126.290  
E : 17.970

Pim: 46 x 105



**Piston Özellikleri**  
(Piston Features)

Segman Taşıyıcı  
(Ring Carrier)  
Sert Anotlama  
(Hard Anodizing)  
Yağ Püskürtme Oyuğu  
(Oil Jet Cut-out)  
Gözarası Konik  
(Conical Eye Gap)



**Piston Parça No**  
(Piston Part No)

87-179300-24  
87-70532-STD



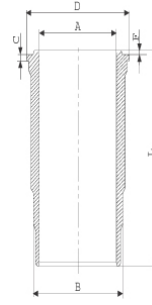
**Segman Seti**  
(Ring Set)

06-179300-20-STD  
3.000 PS ST  
3.000 CR IKA  
4.000 CR STD  
Goetze® LKZ-Ring®

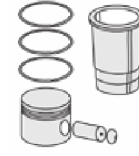


**Silindir Gömleği**  
(Liner)

14-452030-00-WH  
B : 144.500  
L : 253.000  
D : 153.800  
C : 9.920  
F : 1.000

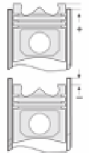


O-RING Bilgi  
(O-RING Information)  
24-26802-00/0  
2x 144\*3,8 FPM  
1x 140\*1,9 FPM  
1 ADET SHIM



**Silindir Kit**  
(Assembly Set)

89-179300-24-STD  
89-70532-STD



**Piston - Blok Montaj**  
Yüksekliği  
(Piston - Block  
Assembly Height)

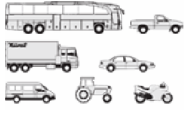
+0,17 /+0,53





MERCEDES BENZ LKW - Ø 128

87-72549-STD

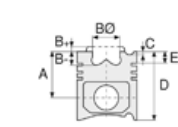


**Motor Özellikleri**  
(Engine Specifications)

İmalatçı (Manufacturer):  
MERCEDES BENZ LKW  
Çap (Diameter): Ø 128  
FM Grup No: 590122

**OM 457 EURO 4/5**

6 Sil. CNG 170 Kw  
(231-354-456hp)  
Axor 1836LS, Axor  
1840LS, Axor 2640CL,  
Axor 3240C, Axor 3340K,  
Axor 4140B, Capacity,  
Conecto, Turismo  
15RHD, Travego 15SHD  
2007....



**Piston Ölçüleri**  
(Piston Dimensions)

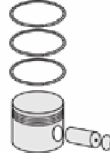
A : 79.500  
B- : 16.000  
BØ : 100.000  
D : 135.000  
E : 9.500

Pim: 52 x 103



**Piston Özellikleri**  
(Piston Features)

Segman Taşıyıcı  
(Ring Carrier)  
Sert Anotlama  
(Hard Anodizing)  
Yağ Püskürtme Oyuğu  
(Oil Jet Cut-out)  
Burçlu Piston  
(Bushing Piston)  
Gözarası Konik  
(Conical Eye Gap)



**Piston Parça No**  
(Piston Part No)

87-876000-72  
87-72549-STD



**Segman Seti**  
(Ring Set)

06-876000-20-STD

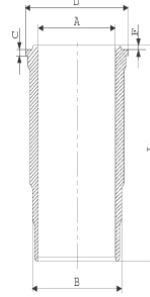
3.000 CK ST  
3.000 CR GOE  
4.000 CK KV1

Goetze® LKZ-Ring® /  
Yağ Segmanı Matkap  
Delikli (Oil Ring Drill  
Perforated)

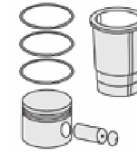


**Silindir Gömleği**  
(Liner)

14-451070-00-WH  
B : 144.500  
L : 266.300  
D : 155.600  
C : 10.120  
F : 1.100  
R : 6.500

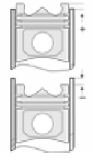


Kurum Giderme Ringli /  
O-RING Bilgi  
(With Soot Removal  
Ring / O-RING  
Information)  
24-35045-70/O  
2x 144\*154\*7 FPM  
1x 132,5\*137\*3,90 FPM  
1 ADET SHIM



**Silindir Kit**  
(Assembly Set)

89-876000-72-STD  
89-72549-STD



**Piston - Blok Montaj**  
Yüksekliği  
(Piston - Block  
Assembly Height)



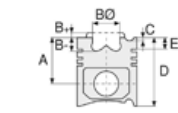


**Motor Özellikleri**  
(Engine Specifications)

İmalatçı (Manufacturer):  
MERCEDES BENZ LKW  
Çap (Diameter): Ø 128  
FM Grup No: 590101

**OM 460 Euro4-5 /**  
**OM 457 LA Euro 5**

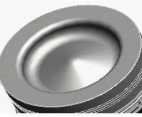
6 Sil. Dizel 11967cc  
260-265-295-315  
Kw(349-360-401-422 Ps)  
Axor 1836LS,  
Axor 1840LS, Axor  
2640CL, Axor 3240C,  
Axor 3340K, Axor  
4140B, Capacity,  
Conecto, Turismo  
15RHD, Travego 15SHD  
2007....



**Piston Ölçüleri**  
(Piston Dimensions)

A : 85.000  
B- : 17.700  
BØ : 87.000  
D : 135.000  
E : 15.000

Pim: 52 x 103



**Piston Özellikleri**  
(Piston Features)

Segman Taşıyıcı  
(Ring Carrier)  
Soğutma Kanallı  
(Coolin Gallery)  
Yağ Püskürtme Oyuğu  
(Oil Jet Cut-out)  
Burçlu Piston  
(Bushing Piston)  
Gözarası Konik  
(Conical Eye Gap)



**Piston Parça No**  
(Piston Part No)

87-876000-63  
87-72585-STD1A  
0,20 mm Kısa (Short)

87-876000-64  
87-72585-STD2A  
0,40 mm Kısa (Short)

87-876000-74  
87-72585-STD3A  
0,60 mm Kısa (Short)

87-876000-62  
87-72585-STD4



**Segman Seti**  
(Ring Set)

06-876000-20-STD

3.000 CK ST  
3.000 CR GOE  
4.000 KV1

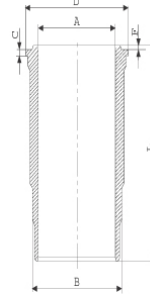
Goetze® LKZ-Ring® /  
Yağ Segmanı Matkap  
Delikli (Oil Ring Drill  
Perforated)



**Silindir Gömleği**  
(Liner)

14-451070-00-WH

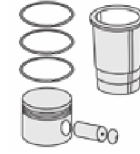
B : 144.500  
L : 266.300  
D : 155.600  
C : 10.120  
F : 1.100  
R : 6.500



**Kurum Giderme Ringli /**  
**O-RING Bilgi**

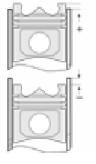
(With Soot Removal  
Ring / O-RING  
Information)

24-35045-70/O  
2x 144\*154\*7 FPM  
1x 132,5\*137\*3,90 FPM  
1 ADET SHIM



**Silindir Kit**  
(Assembly Set)

89-876000-62-STD  
89-72585-STD4



**Piston - Blok Montaj**  
**Yüksekliği**  
(Piston - Block  
Assembly Height)

+0,21/+0,71

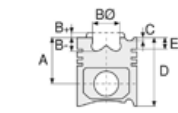




**Motor Özellikleri**  
(Engine Specifications)

İmalatçı (Manufacturer):  
MERCEDES BENZ LKW  
Çap (Diameter): Ø 128  
FM Grup No: 6023

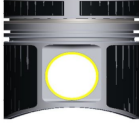
**OM 444LA**  
12 Sil. Dizel 21920cc  
735 KW ( 1000 PS )  
MARİN, SABİT MOTOR  
(Fixed Engine)  
1963...



**Piston Ölçüleri**  
(Piston Dimensions)

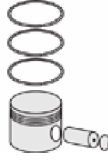
A : 81.350  
B- : 29.000  
BØ : 70.100  
BX : 3.000  
BY : 1.500  
D : 126.350  
E : 21.100

Pim : 46 x 105



**Piston Özellikleri**  
(Piston Features)

Segman Taşıyıcı  
(Ring Carrier)  
Sert Anotlama  
(Hard Anodizing)  
Yağ Püskürtme Oyuğu  
(Oil Jet Cut-Out)  
Burçlu Piston  
(Bushing Piston)  
Gözarası Düz  
(Flat Eye Gap)



**Piston Parça No**  
(Piston Part No)

87-179300-42  
87-72588-STD



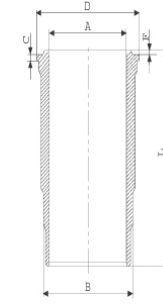
**Segman Seti**  
(Ring Set)

06-179300-20-STD  
3.000 PS ST  
3.000 CR IKA  
4.000 CR STD  
Goetze® LKZ-Ring®

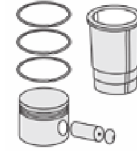


**Silindir Gömleği**  
(Liner)

14-457080-00-WH  
B : 144.500  
L : 253.000  
D : 153.800  
C : 10.070  
F : 1.000

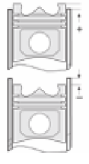


Dış Yüzeyi Krom Kaplı  
(Outer Surface  
Chrome Plated)  
/ O-RING BİLGİ  
(O-ring information)  
24-35005-00/0  
2x 140\*1,9 FPM  
2x 144\*3,8 FPM



**Silindir Kit**  
(Assembly Set)

89-179300-42-STD  
89-72588-STD



**Piston - Blok Montaj**  
Yüksekliği  
(Piston - Block  
Assembly Height)





MERCEDES BENZ LKW - Ø 128

87-72589-STD

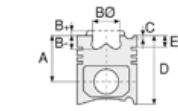


**Motor Özellikleri**  
(Engine Specifications)

İmalatçı (Manufacturer):  
MERCEDES BENZ LKW  
Çap (Diameter): Ø 128  
FM Grup No: 6024

**OM422LA**  
8 Sil. Dizel 14618cc 269  
KW (366 PS)  
SABİT MOTOR  
(Fixed Engine)  
1992...

**OM 444LA**  
12 Sil. Dizel 21930cc  
362 KW (492 PS)  
LOKOMOTİF (Locomotive)  
1992...



**Piston Ölçüleri**  
(Piston Dimensions)

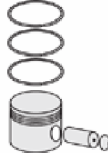
A : 81.310  
B- : 27.500  
BØ : 66.400  
BX : 3.000  
BY : 1.500  
D : 126.270  
E : 17.900

Pim : 46 x 105



**Piston Özellikleri**  
(Piston Features)

Segman Taşıyıcı  
(Ring Carrier)  
Sert Anotlama  
(Hard Anodizing)  
Yağ Püskürtme Oyuğu  
(Oil Jet Cut-Out)  
Burçlu Piston  
(Bushing Piston)  
Gözarası Düz  
(Flat Eye Gap)



**Piston Parça No**  
(Piston Part No)

87-179300-22  
87-72589-STD



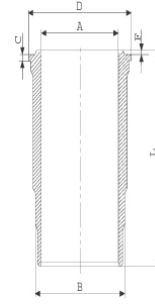
**Segman Seti**  
(Ring Set)

06-179300-20-STD  
3.000 PS ST  
3.000 CR IKA  
4.000 CR STD  
Goetze® LKZ-Ring®

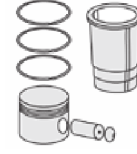


**Silindir Gömleği**  
(Liner)

14-458440-00-WH  
B : 144.500  
L : 253.000  
D : 153.800  
C : 10.200  
F : 1.100

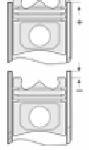


O-RING BİLGİ  
(O-ring information)  
24-26802-00/0  
1x 140\*1,9 FPM  
2x 144\*3,8 FPM  
1 Adet (Piece) SHIM



**Silindir Kit**  
(Assembly Set)

89-179300-22-STD  
89-72589-STD



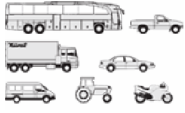
**Piston - Blok Montaj**  
Yüksekliği  
(Piston - Block  
Assembly Height)





MERCEDES BENZ LKW - Ø 130

06-742300-80-STD



**Motor Özellikleri**  
(Engine Specifications)

İmalatçı (Manufacturer):  
MERCEDES BENZ LKW  
Çap (Diameter): Ø 130  
FM Grup No: 5969

**OM 441.905-909/  
911-920**

6 Sil. Dizel 11309cc  
150/165 Kw (204/224 PS)  
16,9:1 Motor No: 512443  
1222, 1224, 1422, 1622,  
1722, 1733, 1824, 1922,  
2222, 2225, 2422,  
O 303, O 404  
1988...

**OM 442**

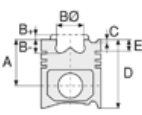
8 Sil. Dizel 15080cc  
218 Kw (296 PS) 16,9:1  
Motor No: 512443 1225,  
1226, 1227, 1228, 1426,  
1428, 1429, 1442, 1625,  
1628, 1629, 1726, 1728,  
1729, 1735, 1926, 1928,  
1929, 2225, 2228, 2229,  
2422, 2426, 2427, 2429,  
2527, 2529, 2629, 3229,  
3328, 3529, 3535,  
O 303, O 404  
1988...

**OM 443.905**

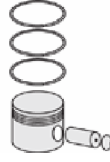
10 Sil. Dizel 18848cc  
265 Kw (360 PS) 16, 9:1  
Motor No: 512443  
ENDUSTRIYEL (Industrial)  
1988...

**OM 444**

12 Sil. Dizel 22618cc 16,9:1  
Motor No: 512443  
ENDUSTRIYEL (Industrial)  
1988...



**Piston Ölçüleri**  
(Piston Dimensions)



**Piston Parça No**  
(Piston Part No)



**Segman Seti**  
(Ring Set)

06-742300-80-STD

3.000  CK KV1  
3.000  CR IKA  
4.000  CR STD

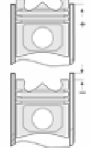
Goetze® LKZ-Ring®



**Silindir Gömleği**  
(Liner)



**Silindir Kit**  
(Assembly Set)



**Piston - Blok Montaj**  
Yüksekliği  
(Piston - Block  
Assembly Height)





MERCEDES BENZ LKW - Ø 130

14-456330-00-WH

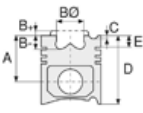


**Motor Özellikleri**  
(Engine Specifications)

İmalatçı (Manufacturer):  
MERCEDES BENZ LKW  
Çap (Diameter): Ø 130  
FM Grup No: 590114

**OM 440.907**  
**Euro1 (OM 442)**  
8 Sil. Dizel 15080cc  
195 KW (265 PS)  
1993...

**OM 442 Euro1**  
8 Sil. Dizel 15080cc  
195 KW (265 PS)  
ENDUSTRIYEL (Industrial)  
1993...



**Piston Ölçüleri**  
(Piston Dimensions)



**Piston Parça No**  
(Piston Part No)

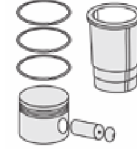
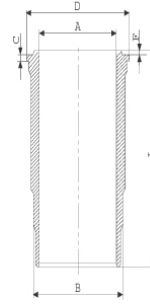


**Segman Seti**  
(Ring Set)

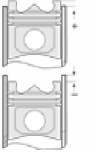


**Silindir Gömleği**  
(Liner)

14-456330-00-WH  
B : 144.500  
L : 253.000  
D : 153.800  
C : 9.920  
F : 1.000



**Silindir Kit**  
(Assembly Set)



**Piston - Blok Montaj**  
Yüksekliği  
(Piston - Block  
Assembly Height)







**Motor Özellikleri**  
(Engine Specifications)

İmalatçı (Manufacturer):  
MERCEDES BENZ LKW  
Çap (Diameter): Ø 130  
FM Grup No: 5967

**OM 501LA EURO2**

6 Sil. Dizel 11940cc  
230-315 Kw (313-428 PS)  
17, 25:1 Turbocharged  
Intercool 24v 1831, 1835,  
1839, 1840 ACTROS,  
1843, 2531, 2535 ACTROS,  
2539 ACTROS,  
2543 ACTROS  
1996...

**OM 541 LA 920-927**

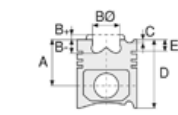
Euro2  
6 Sil. Dizel 11946cc 230,  
260,290,315 Kw (313,354,  
394,428 PS) 17, 25:1  
Turbo,Intercool, 24v  
1831 ACTROS,  
1835 ACTROS,  
1839 ACTROS,  
1840 ACTROS,  
1843 ACTROS,  
2531 ACTROS,  
2535 ACTROS,  
2539 ACTROS,  
2543 ACTROS  
1996...

**OM 502 LA Euro2**

8 Sil. Dizel 15920cc  
350-390 Kw (476-530 PS)  
17, 25:1 Turbo,Intercool 24v  
1848, 1853, 2548, 2553  
1996...

**OM 542 LA 920-922,  
925 Euro2**

8 Sil. Dizel 15928cc  
350-390-420 Kw  
(476-530-570 PS) 17, 25:1  
1848, 1853, 2548, 2553  
1996...



**Piston Ölçüleri**  
(Piston Dimensions)

A : 78.550  
B - : 18.200  
BØ : 88.500  
D : 119.550  
E : 12.000

Pim : 52 x 103



**Piston Özellikleri**  
(Piston Features)

Segman Taşıyıcı  
(Ring Carrier)  
Soğutma Kanallı  
(Cooling Gallery)  
Yağ Püskürtme Oyuğu  
(Oil Jet Cut-Out)  
Gözarası Konik  
(Conical Eye Gap)



**Piston Parça No**  
(Piston Part No)

87-136000-23  
87-70530-STD1A  
0,20 mm Kısa (Short)  
  
87-136000-22  
87-70530-STDA



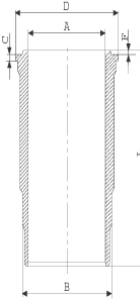
**Segman Seti**  
(Ring Set)

06-136000-20-STD  
3.000 CK ST  
3.000 CR GOE  
4.000 CK KV1  
Goetze® LKZ-Ring®  
Yağ Segmanı Matkap Delik  
(Oil Ring Drill Hole)

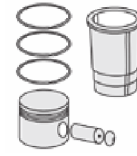


**Silindir Gömleği**  
(Liner)

14-458580-00-WH  
B : 150.000  
L : 258.000  
D : 164.100  
C : 10.120  
F : 1.100

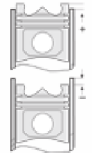


Flanş Altı Su Kanalı  
Dörtgen Kesit  
(Under Flange  
Water Channel  
Rectangular Section) /  
O-RING BİLGİ  
(O-ring Information)  
24-28574-00/O  
2x 149\*158,6\*7 FPM  
1 ADET (Piece) SHIM



**Silindir Kit**  
(Assembly Set)

89-136000-22-STD  
89-70530-STDA



**Piston - Blok Montaj**  
Yüksekliği  
(Piston - Block  
Assembly Height)

+ 0,27 / + 0,61

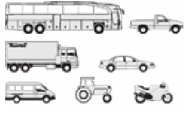
87-289600-22  
87-70530-STDD

06-289600-20-STD  
3.000 CR ST  
3.000 CR IKA  
4.000 CR STD  
Goetze® LKZ-Ring®

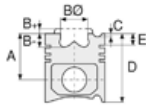
14-458580-00-WH  
Flanş Altı Su Kanalı  
Dörtgen Kesit  
(Under Flange  
Water Channel  
Rectangular Section) /  
O-RING BİLGİ  
(O-ring Information)  
24-28574-00/O  
2x 149\*158,6\*7 FPM  
1 ADET (Piece) SHIM

89-289600-02-STD  
89-70530-STDD





**Motor Özellikleri**  
(Engine Specifications)



**Piston Ölçüleri**  
(Piston Dimensions)



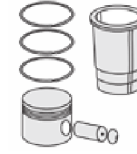
**Piston Parça No**  
(Piston Part No)



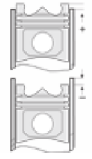
**Segman Seti**  
(Ring Set)



**Silindir Gömleği**  
(Liner)



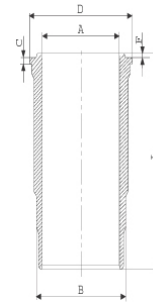
**Silindir Kit**  
(Assembly Set)



**Piston - Blok Montaj**  
**Yüksekliği**  
(Piston - Block  
Assembly Height)

14-450450-00-WH  
B : 150.000  
L : 258.000  
D : 164.100  
C : 10.120  
F : 1.100

89-289600-32-STD  
89-70530-STDC



Flanş Altı Su Kanalı  
Yuvarlak Kesit  
(Under Flange  
Water Channel  
Round Section)

87-864800-22  
87-70530-STDF

06-864800-20  
Goetze® LKZ-Ring®  
Yağ Segmanı Matkap Delik  
(Oil Ring Drill Hole)

14-458580-00-WH  
Flanş Altı Su Kanalı  
Dörtgen Kesit  
(Under Flange  
Water Channel  
Rectangular Section) /  
O-RING BİLGİ  
(O-ring Information)  
24-28574-00/O  
2x 149\*158,6\*7 FPM  
1 ADET (Piece) SHIM

88-864800-22-STD  
88-70530-STDF

14-451390-00-WH  
B : 150.000  
L : 258.000  
D : 164.100  
C : 10.120  
F : 1.100  
O-RİNG BİLGİ  
(O-ring Information) /  
Kurum Giderme Ringli  
(With Scraper Rings)  
24-28574-00/O  
2x 149\*158,6\*7 FPM  
1 ADET (Piece) SHIM



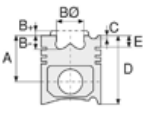


MERCEDES BENZ LKW - Ø 130

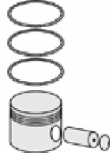
87-70530-STDD



Motor Özellikleri  
(Engine Specifications)



Piston Ölçüleri  
(Piston Dimensions)



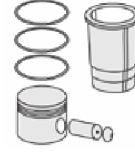
Piston Parça No  
(Piston Part No)



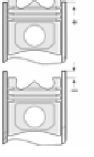
Segman Seti  
(Ring Set)



Silindir Gömleği  
(Liner)

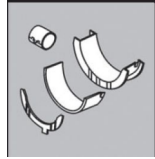


Silindir Kit  
(Assembly Set)



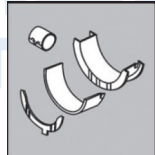
Piston - Blok Montaj  
Yüksekliği  
(Piston - Block  
Assembly Height)

ANA YATAK  
(MAIN BED)



H-063/4-STD

KOL YATAK  
(ARM BED)



71-3835-STD  
SPUTTER





**Motor Özellikleri**  
(Engine Specifications)

İmalatçı (Manufacturer):  
MERCEDES BENZ LKW  
Çap (Diameter): Ø 130  
FM Grup No: 5968

**OM 441.905-909/  
911-920**

6 Sil. Dizel 11309cc  
150/165 Kw  
(204/224 PS) 17, 2:1  
Motor No: 512444  
1622, 1722, 1922,  
2222, 2422, O 303  
1988...

**OM 442**

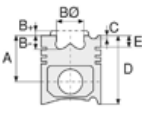
8 Sil. Dizel 15080cc  
218 Kw (296 PS) 16, 9:1  
Motor No 512444  
1225, 1226, 1628, 1726,  
1729, 1928, 2228, 2429,  
3239, O 303, O 4040  
1988...

**OM 443.905**

10 Sil. Dizel 18848cc  
265 Kw (360 PS)  
Motor No: 512444  
ENDUSTRIYEL (Industrial)  
1988...

**OM 444**

12 Sil. Dizel 22618cc  
Motor No: 512444  
ENDUSTRIYEL (Industrial)  
1988...



**Piston Ölçüleri**  
(Piston Dimensions)

A : 81.350  
B- : 27.200  
BØ : 60.700  
BX : 3.000  
BY : 1.500  
D : 126.350  
E : 21.200

Pim : 46 x 99



**Piston Özellikleri**  
(Piston Features)

Segman Taşıyıcı  
(Ring Carrier)  
Sert Anotlama  
(Hard Anodizing)  
Soğutma Kanallı  
(Cooling Gallery)  
Yağ Püskürtme Oyuğu  
(Oil Jet Cut-Out)  
Göz Arası Konik  
(Conical Eye Gap)



**Piston Parça No**  
(Piston Part No)

87-743200-32  
87-70533-STDB



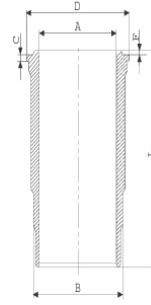
**Segman Seti**  
(Ring Set)

06-743200-80-STD  
3.000 CK KV1  
3.000 CR IKA  
4.000 CR STD  
Goetze® LKZ-Ring®

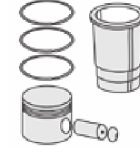


**Silindir Gömleği**  
(Liner)

14-459270-00-WH  
B : 144.500  
L : 253.000  
D : 153.800  
C : 9.920  
F : 1.000

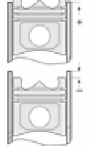


O-RING BİLGİ  
(O-ring Information)  
24-26802-00/O  
1x 140\*1,9 FPM  
2x 144\*3,8 FPM  
1 ADET (Piece) SHIM



**Silindir Kit**  
(Assembly Set)

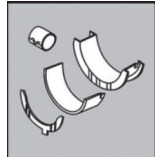
89-743200-32-STD  
89-70533-STDB



**Piston - Blok Montaj**  
Yüksekliği  
(Piston - Block  
Assembly Height)

+ 0,07 / + 0,43

**ANA YATAK**  
(MAIN BED)



H 821/5 STD

**SİL. KAPAK. CONTA**  
(CYLINDER HEAD GASKET)



30-026235-30  
ÇELİK (Steel)





**Motor Özellikleri**  
(Engine Specifications)

İmalatçı (Manufacturer):  
MERCEDES BENZ LKW  
Çap (Diameter): Ø 130  
FM Grup No: 59010

**OM 501 LA EURO3**

6 Sil. Dizel 11946cc  
230-335 Kw (320-456)  
17, 25:1 Turbo intercool  
ACTROS 1841,  
ACTROS 1843,  
ACTROS 1844,  
ACTROS 1846 LS  
2003...

**OM 502 LA EURO3**

8 Sil. Dizel 15928cc  
350-425 Kw (476-578 PS)  
17, 25:1 Turbo intercool  
ACTROS 1850 LS,  
ACTROS 1854 LS  
2003...

**OM 502 LA EURO3**

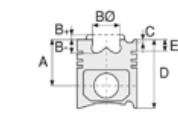
6 Sil. Dizel 15930cc  
350-425 Kw (476-578 PS)  
17, 25:1 Turbo, Intercool,  
TRAVEGO ( SETRA) V8  
TRAVEGO 17 SHD  
2006...

**OM 521 LA.940 Euro 2**

6 Sil. Dizel 11946cc 315  
Kw (428 PS) 17,25:1 4v  
Turbo, Intercooler  
Motor No: 218127 Actros  
1996 - 2000

**OM 521 LA.940 Euro 3**

6 Sil. Dizel 11946cc 315  
Kw (428 PS) 17,77:1 4v  
Turbo, Intercooler  
Motor No: 218127 Actros  
2000...



**Piston Ölçüleri**  
(Piston Dimensions)

A : 78.350  
B - : 16.250  
BØ : 92.800  
D : 119.350  
E : 12.000

Pim : 52 x 103



**Piston Özellikleri**  
(Piston Features)

Segman Taşıyıcı  
(Ring Carrier)  
Soğutma Kanallı  
(Cooling Gallery)  
Yağ Püskürtme Oyuğu  
(Oil Jet Cut-Out)  
Burçlu Piston  
(Bushing Piston)  
Gözarası Konik  
(Conical Eye Gap)



**Piston Parça No**  
(Piston Part No)

87-136000-12  
87-70534-STD A



**Segman Seti**  
(Ring Set)

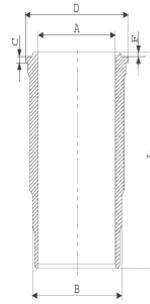
06-136000-20-STD  
3.000 CK ST  
3.000 CR GOE  
4.000 CK KV1

Goetze® LKZ-Ring® /  
Yağ Segmanı Matkap Delik  
(Oil Ring Drill Hole)

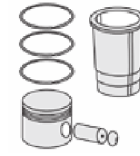


**Silindir Gömleği**  
(Liner)

14-458580-00-WH  
B : 150.000  
L : 258.000  
D : 164.100  
C : 10.120  
F : 1.100

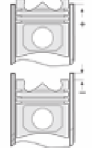


Flanş Altı Su Kanalı  
Dörtgen Kesit  
(Under Flange  
Water Channel  
Rectangular Section)/  
O-RING BİLGİ  
(O-ring Information)  
24-28574-00/O  
2x 149\*158,6\*7 FPM  
1 ADET (Piece) SHIM



**Silindir Kit**  
(Assembly Set)

89-136000-12-STD  
89-70534-STD A



**Piston - Blok Montaj**  
Yüksekliği  
(Piston - Block  
Assembly Height)

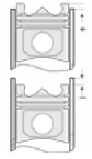
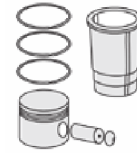
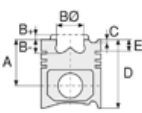
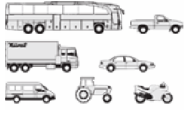
+0,27 / + 0,61

14-451390-00-WH  
B : 150.000  
L : 258.000  
D : 164.100  
C : 10.120  
F : 1.100

89-136000-42-STD  
89-70534-STD B

O-RİNG BİLGİ  
(O-ring Information) /  
Kurum Giderme Ringli  
(With Scraper Rings)  
24-28574-00/O  
2x 149\*158,6\*7 FPM  
1 ADET (Piece) SHIM





**Motor Özellikleri**  
(Engine Specifications)

**Piston Ölçüleri**  
(Piston Dimensions)

**Piston Parça No**  
(Piston Part No)

**Segman Seti**  
(Ring Set)

**Silindir Gömleği**  
(Liner)

**Silindir Kit**  
(Assembly Set)

**Piston - Blok Montaj**  
Yüksekliği  
(Piston - Block  
Assembly Height)

**OM 541 LA 920-927**

**Euro2**

6 Sil. Dizel 11946cc  
230 Kw (313 Ps ) 17, 25:1 4v  
Turbo, Intercooler  
Motor No: 000091058  
1832, 2031, 2032,  
2531 ACTROS, 2532, 2631,  
3231, 3331, Actros 1831  
1996...

**OM 541 LA.920/928/  
940/947 Euro 3**

6 Sil. Dizel 11946cc  
230-260-290-315  
Kw (313-354-394-428 Ps )  
17, 75:1 4v Turbo, Intercooler  
Motor No: 218127 1835,  
1839, 1843, 2031, 2032,  
2531, 2535, 2539, 2543,  
3331, Actros 1831  
2000...

**OM 542 LA 920-922,  
925 Euro2**

8 Sil. Dizel 15928cc  
350-390-420-448  
Kw (476-530-571-609 Ps )  
17,75:1 4v Turbo, Intercooler  
Motor No: 094641 1853,  
1857, 2548, 2553,  
Actros 1848  
2000...

**OM 541 LA.941/910/  
921/923/924 Euro 3**

6 Sil. Dizel 11946cc  
230-260 Kw (313-354 Ps)  
Turbo, Intercooler  
Motor No: 218127 Actros  
2000...

87-864800-02  
87-70534-STDC

06-864800-20  
Goetze® LKZ-Ring® /  
Yağ Segmanı Matkap Delik  
(Oil Ring Drill Hole)

14-458580-00-WH  
Flanş Altı Su Kanalı  
Dörtgen Kesit  
(Under Flange  
Water Channel  
Rectangular Section) /  
O-RING BİLGİ  
(O-ring Information)  
24-28574-00/O  
2x 149\*158,6\*7 FPM  
1 ADET (Piece) SHIM

89-864800-02-STD  
89-70534-STDC





MERCEDES BENZ LKW - Ø 130

87-72564-STD



**Motor Özellikleri**  
(Engine Specifications)

İmalatçı (Manufacturer):  
MERCEDES BENZ LKW  
Çap (Diameter): Ø 130  
FM Grup No: 6020

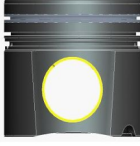
**OM 501/502 LA**  
**EURO 4-5**

6 Sil. Dizel 15928cc  
405 KW (551 PS) 17.75:1  
BlueTec - Turbo  
Intercooled 1836 AK,  
1841 LLS, 1844 LS,  
1848 LLS, 1850,L,LL,  
1851 LS, 1860 L,LL,  
2032 K, 2041 AS,  
2555 LS, 2654 K,LK,  
2655 K,LK, 3236 B,  
3336, 3336 AK, 3341 AK,  
3341 K, 3341 S, 3354, 3355,  
3355 AS, 3355 S, 4141 B,  
4151 K  
2007...

**Piston Ölçüleri**  
(Piston Dimensions)

A : 78.550  
B - : 17.600  
BØ : 87.000  
D : 119.550  
E : 15.000

Pim : 52 x 103



**Piston Özellikleri**  
(Piston Features)

Segman Taşıyıcı  
(Ring Carrier)  
Soğutma Kanallı  
(Cooling Gallery)  
Yağ Püskürtme Oyuğu  
(Oil Jet Cut-Out)  
Burçlu Piston  
(Bushing Piston)  
Göz Arası Konik  
(Conical Eye Gap)



**Piston Parça No**  
(Piston Part No)

87-420900-02  
87-72564-STD  
87-420900-03  
87-72564-STD1  
0,20 mm Kısa (Short)



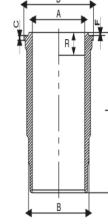
**Segman Seti**  
(Ring Set)

06-420900-20-STD  
3.000 GDC ST  
3.000 CR GOE  
4.000 GDC ST  
Yağ Segmanı Matkap Delik  
(Oil Ring Drill Hole)



**Silindir Gömleği**  
(Liner)

15-451220-00-WH  
B : 150.000  
L : 258.000  
D : 164.200  
C : 10.120  
F : 1.100  
R : 13.500

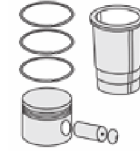


KURUM GİDERME  
VE O-RİNGLİ  
(With Scraper Rings  
And O-ring)  
24-35048-60/O  
2x 149x158,6x7 FPM  
1x 153\*163\*0,15 SHIM

14-451220-00-WH  
B : 150.000  
L : 258.000  
D : 164.200  
C : 10.120  
F : 1.100  
R : 13.500

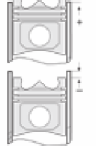
KURUM GİDERME  
RİNGLİ  
(With Scraper Rings)  
/ O-RING BİLGİ  
(O-ring Information)  
24-35048-60/O  
2x 149x158,6x7 FPM  
1x 153\*163\*0,15 SHIM

15-451220-00-WH  
KURUM GİDERME  
VE O-RİNGLİ  
(With Scraper Rings  
And O-ring)  
24-35048-60/O  
2x 149x158,6x7 FPM  
1x 153\*163\*0,15 SHIM



**Silindir Kit**  
(Assembly Set)

89-420900-02-STD  
89-72564-STD



**Piston - Blok Montaj**  
**Yüksekliği**  
(Piston - Block  
Assembly Height)

+0,27 / +0,61





MERCEDES BENZ LKW - Ø 132

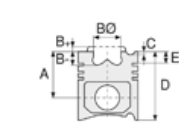
87-75546-STD



**Motor Özellikleri**  
(Engine Specifications)

İmalatçı (Manufacturer):  
MERCEDES BENZ LKW  
Çap (Diameter): Ø 132  
FM Grup No: 6032

**OM 471 LA EURO 6**  
6 Sil. Dizel 310-390  
KW / 422-539 PS Actros,  
Antos, Arocs,  
İŞ MAKINASI (Working  
Machine), Setra  
2011...



**Piston Ölçüleri**  
(Piston Dimensions)

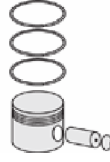
A : 75.000  
B- : 17.200  
BØ : 94.000  
C1 : 1.500  
D : 113.000  
E : 10.000

Pim : 58 x 88



**Piston Özellikleri**  
(Piston Features)

Soğutma Kanallı  
(Cooling Gallery)  
Gözarası Konik  
(Conical Eye Gap)



**Piston Parça No**  
(Piston Part No)

87-440600-02  
87-75546-STD  
Monosteel Çelik Piston  
(Steel Piston)



**Segman Seti**  
(Ring Set)

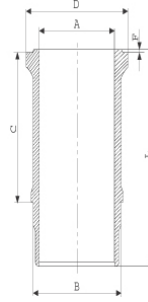
06-440600-20-STD  
3.500 GDC ST  
2.500 CKS KV4  
3.500 CKS KV1

Goetze® LKZ-Ring®  
Yağ Segmanı Matkap Delik  
(Oil Ring Drill Hole)

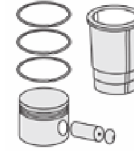


**Silindir Gömleği**  
(Liner)

15-610060-00-WH  
B : 141.970  
L : 256.000  
D : 159.000  
C : 7.000  
R : 8.900

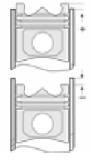


KURUM GİDERME  
RİNGLİ VE O-RİNGLİ  
(With Scraper Rings  
And O-ring)  
24-35053-00/0  
1x 130\*134\*4.6 FKM 75  
1x 146\*153\*3,9 FKM 75



**Silindir Kit**  
(Assembly Set)

89-440600-02-STD  
89-75546-STD



**Piston - Blok Montaj**  
Yüksekliği  
(Piston - Block  
Assembly Height)

-0,2090  
+0,2315







MERCEDES BENZ LKW - Ø 60

06-400600-00-STD

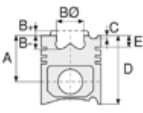


**Motor Özellikleri**  
(Engine Specifications)

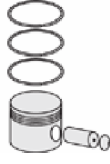
İmalatçı (Manufacturer):  
MERCEDES BENZ LKW  
Çap (Diameter): Ø 60  
FM Grup No: 5901

**OM 355**  
2 Sil. Dizel  
WESTINGHOUSE P4

**OM 360**  
2 Sil. Dizel  
WESTINGHOUSE P4



**Piston Ölçüleri**  
(Piston Dimensions)



**Piston Parça No**  
(Piston Part No)



**Segman Seti**  
(Ring Set)

06-400600-00-STD  
06-400607-00-0,50 mm  
06-400611-00-1,00 mm

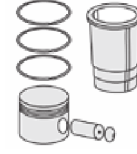
2.500 P STD  
2.500 P STD  
4.000 P STD

06-400600-30-STD

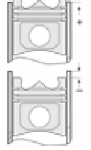
2.500 P STD  
2.500 P STD  
4.000 P STD



**Silindir Gömleği**  
(Liner)

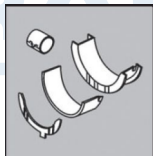


**Silindir Kit**  
(Assembly Set)



**Piston - Blok Montaj**  
Yüksekliği  
(Piston - Block  
Assembly Height)

**KOL YATAK**  
(ARM BED)



71-2549  
STD, 0,25MM, 0,50MM, 0,75MM, 1,00MM, 1,25MM, 1,50MM

