



**Motor Özellikleri**  
(Engine Specifications)

İmalatçı (Manufacturer):  
MERCEDES BENZ PKW -  
RENAULT  
Çap (Diameter): Ø 76  
FM Grup No: 7278

**K9K 837/846 EURO 5**

4 Sil. Dizel 1461cc 81-  
KW 110 HP 15. 5:1  
Mercedes ile Ortak Motor  
(With Mercedes Common  
Engine)  
Grand Secnic III 1.5 DCI  
16V, Megane Grandtour  
III 1.5 dCi, Megane III 1.5 dCi  
2010...

**OM 607 DE 15 LA**

4 Sil. Dizel 1461cc 81  
KW-110 HP 15,5:1  
A CLA 180 CDI, B CLA  
180 CDI, Citan  
2010...

**Piston Ölçüleri**  
(Piston Dimensions)

A : 41.667  
B - : 13.500  
BØ : 47.000  
BX : 0.930  
BY : 0.830  
C1 : 0.430  
C2 : 0.250  
D : 66.000  
E : 9.000

Pim : 26 x 60



**Piston Özellikleri**  
(Piston Features)

Segman Taşıyıcı  
(Ring Carrier)  
Soğutma Kanallı  
(Cooling Gallery)  
Yağ Püskürtme Oyuğu  
(Oil Jet Cut-Out)  
Gözarası Konik  
(Conical Eye Gap)

**Piston Parça No**  
(Piston Part No)

87-123407-83  
87-71951-0501  
0,20 mm Kısa (Short)

87-123411-83  
87-71951-1001  
0,20 mm Kısa (Short)

87-123400-82  
87-71951-STD

87-123407-82  
87-71951-0,50

87-123410-82  
87-71951-1,00

87-123400-83  
87-71951-STD1  
0,20 mm Kısa (Short)

**Segman Seti**  
(Ring Set)

06-123400-10-STD  
06-123407-10-0,50 mm  
06-123411-10-1,00 mm

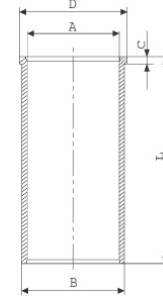
2.000 CKP KV1  
2.000 P GOE  
2.500 CRP GOE

Goetze® LKZ-Ring® /  
Yağ Segmanı Matkap Delik  
(Oil Ring Drill Hole)



**Silindir Gömleği**  
(Liner)

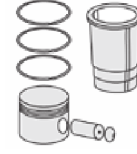
14-020650-00-D  
B : 79.100  
L : 142.000  
D : 81.000  
C : 5.000



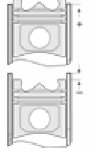
14-020651-00-D  
B : 79.600  
L : 142.000  
D : 81.500  
C : 5.500

Dıştan Çap  
0,50 mm Farklı  
(Outside Diameter  
0.50 mm Different)

**Silindir Kit**  
(Assembly Set)



**Piston - Blok Montaj**  
Yüksekliği  
(Piston - Block  
Assembly Height)





**Motor Özellikleri**  
(Engine Specifications)

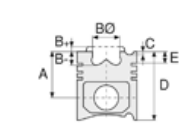
İmalatçı (Manufacturer):  
MERCEDES BENZ PKW-  
RENAULT  
Çap (Diameter): Ø 76  
FM Grup No: 2779

**K9K 837/846 EURO 5**

4 Sil. Dizel 1461cc  
65 KW-90HP  
Mercedes İle Ortak Motor  
(With Mercedes Common  
Engine)  
Grand Secnic III 1.5 DCI 16V,  
Megane Grandtour III  
1.5 dCi, Megane III 1.5 dCi  
2010...

**OM 607 DE 15 LA**

4 Sil. Dizel 1461cc 65  
KW-90 HP  
RENAULT İLE ORTAK  
MOTOR (With Renault  
Common Engine)  
A 160, B 160  
2010...



**Piston Ölçüleri**  
(Piston Dimensions)

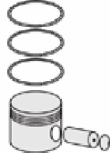
A : 41.667  
B- : 13.500  
BØ : 47.000  
BX : 0.930  
BY : 0.830  
C1 : 0.430  
C2 : 0.250  
D : 66.000  
E : 9.000

Pim : 26 x 60



**Piston Özellikleri**  
(Piston Features)

Segman Taşıyıcı  
(Ring Carrier)  
Yağ Püskürtme Oyuğu  
(Oil Jet Cut-Out)  
Gözarası Konik  
(Conical Eye Gap)



**Piston Parça No**  
(Piston Part No)

87-123407-93  
87-71952-0501  
0,20 mm Kısa (Short)

87-123411-92  
87-71952-100

87-123400-92  
87-71952-STD

87-123407-92  
87-71952-0,50

87-123400-93  
87-71952-STD1  
0,20 mm Kısa (Short)



**Segman Seti**  
(Ring Set)

06-123400-10-STD  
06-123407-10-0,50 mm  
06-123411-10-1,00 mm

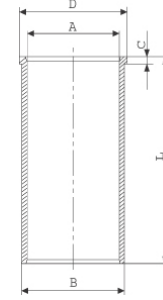
2.000 CKP KV1  
2.000 P GOE  
2.500 CRP GOE

Goetze® LKZ-Ring® /  
Yağ Segmanı Matkap Delik  
(Oil Ring Drill Hole)



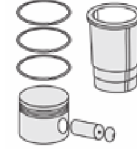
**Silindir Gömleği**  
(Liner)

14-020650-00-D  
B : 79.100  
L : 142.000  
D : 81.000  
C : 5.000

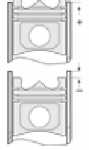


14-020651-00-D  
B : 79.600  
L : 142.000  
D : 81.500  
C : 5.500

Dıştan Çap  
0,50 mm Farklı  
(Outside Diameter  
0.50 mm Different)



**Silindir Kit**  
(Assembly Set)



**Piston - Blok Montaj**  
Yüksekliği  
(Piston - Block  
Assembly Height)





**Motor Özellikleri**  
(Engine Specifications)

İmalatçı (Manufacturer):  
MERCEDES BENZ PKW-  
RENAULT-NISSAN  
Çap (Diameter): Ø 80  
FM Grup No: 7281

**R9M 402**

4 Sil. Dizel 1598cc 96  
KW-130PS C Serisi  
(C Series), MEGANE,  
QASHQAI, SCENIC  
2015...

**Piston Ölçüleri**  
(Piston Dimensions)

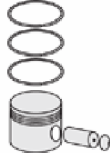
A : 46.000  
B- : 12.350  
BØ : 46.500  
C1 : 0.300  
D : 70.500  
E : 9.000

Pim : 30 x 60



**Piston Özellikleri**  
(Piston Features)

Segman Taşıyıcı  
(Ring Carrier)  
Soğutma Kanallı  
(Cooling Gallery)  
Yağ Püskürtme Oyuğu  
(Oil Jet Cut-Out)  
Gözarası Konik  
(Conical Eye Gap)



**Piston Parça No**  
(Piston Part No)

87-890000-02  
87-71974-STD  
87-890007-02  
87-71974-0,50

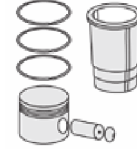


**Segman Seti**  
(Ring Set)

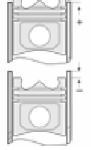
06-890000-00-STD  
06-890007-00-0,50 mm  
2.000 CKP KV1  
1.750 P F14  
2.000 CRP GOE



**Silindir Gömleği**  
(Liner)



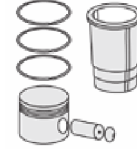
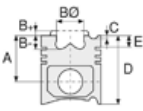
**Silindir Kit**  
(Assembly Set)



**Piston - Blok Montaj**  
Yüksekliği  
(Piston - Block  
Assembly Height)

1,116 mm / 1,184 mm  
Conta İle (With Gasket)  
0,387 / 0,551





**Motor Özellikleri**  
(Engine Specifications)

İmalatçı (Manufacturer):  
MERCEDES BENZ PKW  
Çap (Diameter): Ø 82  
FM Grup No: 580105

**M 271**  
4 Sil. Benzinli 1600cc  
180 BG C 180  
2007...

**Piston Ölçüleri**  
(Piston Dimensions)

A : 29.900  
B- : 1.000  
BØ : 70.000  
C1 : 4.000  
C2 : 1.000  
D : 50.900  
E : 5.750

Pim : 20 x 56



**Piston Özellikleri**  
(Piston Features)

Gözarası Düz  
(Flat Eye Gap)

**Piston Parça No**  
(Piston Part No)

87-826400-22  
87-70444-STD  
  
87-826407-22  
87-70444-050

**Segman Seti**  
(Ring Set)

06-826400-50-STD  
06-826407-50-0,50 mm  
  
1.200 NT ST  
1.500 P GOE  
2.500 NT ST

**Silindir Gömleği**  
(Liner)

**Silindir Kit**  
(Assembly Set)

**Piston - Blok Montaj**  
Yüksekliği  
(Piston - Block  
Assembly Height)





MERCEDES BENZ PKW - Ø 82

87-72527-STD



**Motor Özellikleri**  
(Engine Specifications)

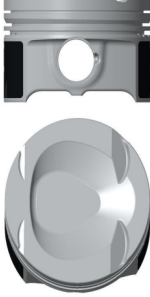
İmalatçı (Manufacturer):  
MERCEDES BENZ PKW  
Çap (Diameter): Ø 82  
FM Grup No: 590135

**M 271.860-M 271.820**  
4 Sil. Benzinli 1796cc  
150 kW / 204 PS  
C200 CGI- C204-  
C250-E200 CGI-E  
2011...

**Piston Ölçüleri**  
(Piston Dimensions)

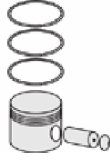
A : 30.000  
B- : 4.450  
C1 : 0.620  
C2 : 3.480  
D : 50.000  
E : 6.200

Pim : 20 x 56



**Piston Özellikleri**  
(Piston Features)

Gözarası Konik  
(Conical Eye Gap)



**Piston Parça No**  
(Piston Part No)

87-860100-02  
87-72527-STD  
  
87-860107-02  
87-72527-0,50

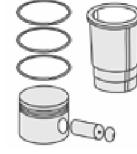


**Segman Seti**  
(Ring Set)

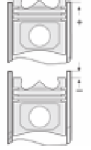
06-860100-50-STD  
06-860107-50-0,50 mm  
  
1.200 CK KV4  
1.500 P F14  
2.000 CR GOE



**Silindir Gömleği**  
(Liner)



**Silindir Kit**  
(Assembly Set)



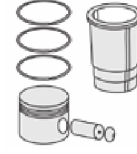
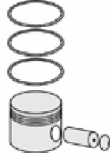
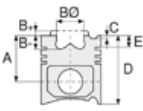
**Piston - Blok Montaj**  
Yüksekliği  
(Piston - Block  
Assembly Height)





MERCEDES BENZ PKW - Ø 82

87-72576-STD



**Motor Özellikleri**  
(Engine Specifications)

İmalatçı (Manufacturer):  
MERCEDES BENZ PKW  
Çap (Diameter): Ø 82  
FM Grup No: 5894

**M 271 E 18 948**  
4 Sil. Benzinli 1796cc  
141 Kw(192 Ps) C200, C230,  
CLK200, E200 KOMP.  
2001 - 2005

**Piston Ölçüleri**  
(Piston Dimensions)

A : 29.900  
B- : 4.610  
BØ : 71.200  
C1 : 1.000  
C2 : 4.000  
D : 50.900  
E : 5.600

Pim : 20 x 56



**Piston Özellikleri**  
(Piston Features)

Sert Anotlama  
(Hard Anodizing)  
Gözarası Düz  
(Flat Eye Gap)

**Piston Parça No**  
(Piston Part No)

87-826400-02  
87-72576-STD  
  
87-826407-02  
87-72576-050

**Segman Seti**  
(Ring Set)

06-826400-50-STD  
06-826407-50-0,50 mm  
  
1.200 NT ST  
1.500 P GOE  
2.500 NT ST

**Silindir Gömleği**  
(Liner)

**Silindir Kit**  
(Assembly Set)

**Piston - Blok Montaj**  
Yüksekliği  
(Piston - Block  
Assembly Height)





MERCEDES BENZ PKW - Ø 82

87-75610-STD

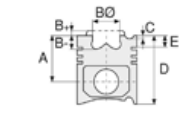


**Motor Özellikleri**  
(Engine Specifications)

İmalatçı (Manufacturer):  
MERCEDES BENZ PKW  
Çap (Diameter): Ø 82  
FM Grup No: 590137

**OM 654.920 /**  
**OM656.929**

4 Sil. Dizel 1950cc  
84-183 KW / 320-340 PS  
A 180 d, A 200 d,  
B 180 d, B 200 d,  
C / E / CLA / GLA,  
SPRINTER, Vito  
2018...



**Piston Ölçüleri**  
(Piston Dimensions)

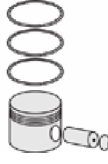
A : 35.150  
B- : 13.900  
BØ : 48.200  
C1 : 1.653  
C2 : 1.130  
D : 59.150  
E : 3.500

Pim: 30 x 50



**Piston Özellikleri**  
(Piston Features)

Gözarası Konik  
(Conical Eye Gap)



**Piston Parça No**  
(Piston Part No)

87-866100-02  
87-75610-STD  
Tek Parça Çelik  
Piston (MonoSteel)

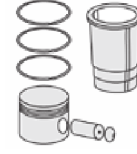


**Segman Seti**  
(Ring Set)

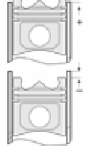
06-866100-00-STD  
2.000  CK KV1  
1.7500  CR KV1  
2.000  P GOE



**Silindir Gömleği**  
(Liner)



**Silindir Kit**  
(Assembly Set)



**Piston - Blok Montaj**  
Yüksekliği  
(Piston - Block  
Assembly Height)





MERCEDES BENZ PKW - Ø 83

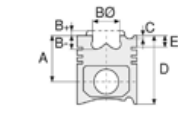
87-72526-STD



**Motor Özellikleri**  
(Engine Specifications)

İmalatçı (Manufacturer):  
MERCEDES BENZ PKW  
Çap (Diameter): Ø 83  
FM Grup No: 590130

**OM 651.911/912/913/916**  
4 Sil. Dizel 2143cc 125-150  
KW /170-204 PS C 180 CDI,  
C 200 CDI, C 220 CDI,  
C 250 CDI, CLS 250 CDI,  
E 200 CDI, E 220 CDI  
2007...



**Piston Ölçüleri**  
(Piston Dimensions)

A : 48.500  
B- : 13.250  
BØ : 49.400  
C1 : 1.500  
C2 : 0.930  
D : 75.500  
E : 10.100

Pim : 30 x 66



**Piston Özellikleri**  
(Piston Features)

Segman Taşıyıcı  
(Ring Carrier)  
Soğutma Kanallı  
(Cooling Gallery)  
Yağ Püskürtme Oyuğu  
(Oil Jet Cut-Out)  
Burçlu Piston  
(Bushing Piston)  
Gözarası Konik  
(Conical Eye Gap)



**Piston Parça No**  
(Piston Part No)

87-826707-23  
87-72526-0501  
0,20 mm Kısa (Short)

87-826700-22  
87-72526-STD

87-826707-22  
87-72526-0,50

87-826700-23  
87-72526-STD1  
0,20 mm Kısa (Short)



**Segman Seti**  
(Ring Set)

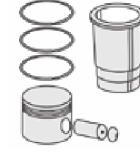
06-826700-00-STD  
06-826707-00-050

2.000 GDC KV4  
1.750 F14  
2.000 CR GOE

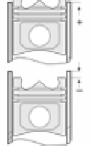
Yağ Segmanı Matkap Delik  
(Oil Ring Drill Hole)



**Silindir Gömleği**  
(Liner)



**Silindir Kit**  
(Assembly Set)



**Piston - Blok Montaj**  
Yüksekliği  
(Piston - Block  
Assembly Height)

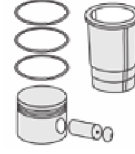
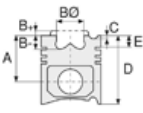






MERCEDES BENZ PKW - Ø 83

87-72528-STD



**Motor Özellikleri**  
(Engine Specifications)

İmalatçı (Manufacturer):  
MERCEDES BENZ PKW  
Çap (Diameter): Ø 83  
FM Grup No: 590134

**M 274 910**  
4 Sil. Benzinli 1595cc  
75-115 KW / 102-156 PS 10,3  
A 180, A 200, B 180, B 200,  
C 180, C 200, E 180, E 200  
2011...

**Piston Ölçüleri**  
(Piston Dimensions)

A : 30.900  
B- : 6.000  
BØ : 68.000  
C1 : 1.500  
C2 : 2.400  
D : 50.900  
E : 6.500

Pim : 20 x 51



**Piston Özellikleri**  
(Piston Features)

Gözarası Konik  
(Conical Eye Gap)

**Piston Parça No**  
(Piston Part No)

87-865500-02  
87-72528-STD  
  
87-865507-02  
87-72528-0,50

**Segman Seti**  
(Ring Set)

06-865500-50-STD  
06-865507-00-0,50 mm  
  
1.200 NT ST  
1.500 P GOE  
2.000 CR ST

**Silindir Gömleği**  
(Liner)

**Silindir Kit**  
(Assembly Set)

**Piston - Blok Montaj**  
Yüksekliği  
(Piston - Block  
Assembly Height)





MERCEDES BENZ PKW - Ø 83

87-72531-STD



**Motor Özellikleri**  
(Engine Specifications)

İmalatçı (Manufacturer):  
MERCEDES BENZ PKW  
Çap (Diameter): Ø 83  
FM Grup No: 5895

**OM 640.940**

4 Sil. Dizel 1991cc 80  
Kw(109 Ps) 18:1  
Turbo, Intercooler 16 v C.Rail  
A 180 CDI, B 180 CDI  
2004...

**OM 640.941**

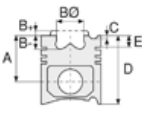
4 Sil. Dizel 1991cc 103  
Kw(140 Ps) 18:1  
Turbo, Intercooler 16 v C.Rail  
A 200 CDI, B 200 CDI  
2004...

**OM 640.942**

4 Sil. Dizel 1991cc 60  
Kw(82 Ps) 18:1  
Turbo, Intercooler 16 v C.Rail  
A 160 CDI  
2004...

**OM 639.939**

3 Sil. Dizel 1493cc 50-70  
Kw(68-95 Ps) 18:1  
Turbo, Intercooler 12 v C.Rail  
Forfour 1.5 CDI  
2004...



**Piston Ölçüleri**  
(Piston Dimensions)

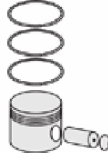
A : 45.650  
B- : 14.650  
BØ : 43.400  
C1 : 1.180  
C2 : 1.020  
D : 71.650  
E : 10.200

Pim : 30 x 66



**Piston Özellikleri**  
(Piston Features)

Segman Taşıyıcı  
(Ring Carrier)  
Soğutma Kanallı  
(Cooling Gallery)  
Yağ Püskürtme Oyuğu  
(Oil Jet Cut-Out)  
Gözarası Konik  
(Conical Eye Gap)






**Piston Parça No**  
(Piston Part No)

87-826300-02  
87-72531-STD

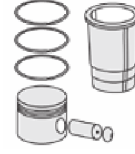


**Segman Seti**  
(Ring Set)

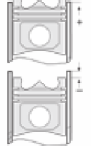
06-826300-00-STD  
2.000  CK KV4  
2.000  F14  
2.000  CR GOE  
Yağ Segmanı Matkap Delik  
(Oil Ring Drill Hole)



**Silindir Gömleği**  
(Liner)



**Silindir Kit**  
(Assembly Set)



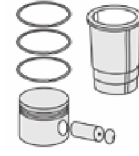
**Piston - Blok Montaj**  
Yüksekliği  
(Piston - Block  
Assembly Height)





MERCEDES BENZ PKW - Ø 83

87-72548-STD



**Motor Özellikleri**  
(Engine Specifications)

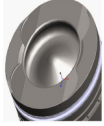
İmalatçı (Manufacturer):  
MERCEDES BENZ PKW  
Çap (Diameter): Ø 83  
FM Grup No: 590126

**OM 651.912**  
4 Sil. Dizel 2143cc 150  
KW-204 PS 16, 2:1 C 250,  
GLK 220 CDI BLUE  
EFFICIENC, GLK 250 CDI  
2007...

**Piston Ölçüleri**  
(Piston Dimensions)

A : 48.500  
B - : 13.250  
BØ : 49.400  
C1 : 1.500  
C2 : 0.970  
D : 75.500  
E : 10.100

Pim : 30 x 66



**Piston Özellikleri**  
(Piston Features)

Segman Taşıyıcı  
(Ring Carrier)  
Soğutma Kanallı  
(Cooling Gallery)  
Yağ Püskürtme Oyuğu  
(Oil Jet Cut-Out)  
Gözarası Konik  
(Conical Eye Gap)

**Piston Parça No**  
(Piston Part No)

87-826700-02  
87-72548-STD  
  
87-826707-02  
87-72548-0,50

**Segman Seti**  
(Ring Set)

06-826700-00-STD  
06-826707-00-050  
  
2.000 GDC KV4  
1.750 F14  
2.000 CR GOE  
  
Yağ Segmanı Matkap Delik  
(Oil Ring Drill Hole)

**Silindir Gömleği**  
(Liner)

**Silindir Kit**  
(Assembly Set)

**Piston - Blok Montaj**  
Yüksekliği  
(Piston - Block  
Assembly Height)

+0,50 / +0,75





MERCEDES BENZ PKW - Ø 83

87-72573-STD



**Motor Özellikleri**  
(Engine Specifications)

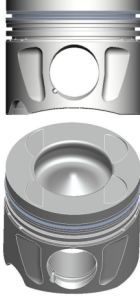
İmalatçı (Manufacturer):  
MERCEDES BENZ PKW  
Çap (Diameter): Ø 83  
FM Grup No: 590132

**OM 642.820 EURO 5**  
6 Sil. Dizel 2987cc  
155 kw-210 ps GL 320 CDI,  
GL 350 CDI, ML 300 CDI,  
ML 320 CDI, ML 350 CDI  
2010...

**Piston Ölçüleri**  
(Piston Dimensions)

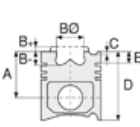
A : 45.650  
B- : 14.650  
BØ : 43.400  
C1 : 1.430  
C2 : 1.070  
D : 71.650  
E : 10.020

Pim : 30 x 66



**Piston Özellikleri**  
(Piston Features)

Segman Taşıyıcı  
(Ring Carrier)  
Soğutma Kanallı  
(Cooling Gallery)  
Yağ Püskürtme Oyuğu  
(Oil Jet Cut-Out)  
Gözarası Konik  
(Conical Eye Gap)



**Piston Parça No**  
(Piston Part No)

87-826600-22  
87-72573-STD  
1.2.3 Silindir İçin  
(For Cylinder)

87-826600-32  
87-72574-STD  
4.5.6 Silindir İçin  
(For Cylinder)



**Segman Seti**  
(Ring Set)

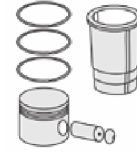
06-826600-00-STD  
06-826607-00-0,50  
2.000 CKS KV4  
2.000 P F14  
2.000 CR GOE



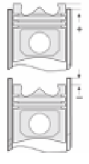
**Silindir Gömleği**  
(Liner)



**Silindir Kit**  
(Assembly Set)



**Piston - Blok Montaj**  
Yüksekliği  
(Piston - Block  
Assembly Height)



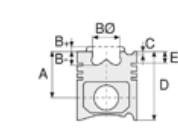


**Motor Özellikleri**  
(Engine Specifications)

İmalatçı (Manufacturer):  
MERCEDES BENZ PKW  
Çap (Diameter): Ø 83  
FM Grup No: 590124

**OM**

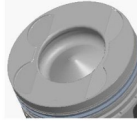
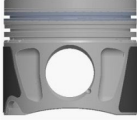
642.910/920/921/930/932/  
940/950/960/961/970  
6 Sil. Dizel 2987cc 211-224  
PS 17, 7:1 CLS 320 CDI,  
E 280 CDI, E 320  
BLUETEC, E 320 CDI  
2005 - 2009



**Piston Ölçüleri**  
(Piston Dimensions)

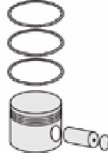
A : 45.650  
B - : 14.650  
BØ : 43.400  
C1 : 1.330  
C2 : 1.490  
D : 71.650  
E : 10.200

Pim : 30 x 66



**Piston Özellikleri**  
(Piston Features)

Segman Taşıyıcı  
(Ring Carrier)  
Soğutma Kanallı  
(Cooling Gallery)  
Yağ Püskürtme Oyuğu  
(Oil Jet Cut-Out)  
Gözarası Konik  
(Conical Eye Gap)



**Piston Parça No**  
(Piston Part No)

87-826600-02  
87-72579-STD  
Piston Sağ (Piston Right)

87-826607-02  
87-72579-0,50

87-826600-12  
87-72580-STD  
Piston Sol (Piston Left)

87-826607-12  
87-72580-0,50



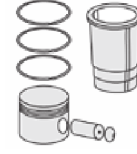
**Segman Seti**  
(Ring Set)

06-826600-00-STD  
06-826607-00-0,50

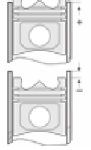
2.000 CKS KV4  
2.000 P F14  
2.000 CR GOE



**Silindir Gömleği**  
(Liner)



**Silindir Kit**  
(Assembly Set)



**Piston - Blok Montaj**  
Yüksekliği  
(Piston - Block  
Assembly Height)

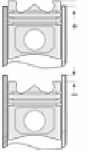
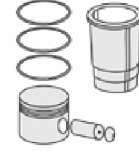
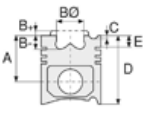
+0,53 / +0,77





MERCEDES BENZ PKW- Ø 83

87-72581-STD



**Motor Özellikleri**  
(Engine Specifications)

İmalatçı (Manufacturer):  
MERCEDES BENZ PKW  
Çap (Diameter): Ø 83  
FM Grup No: 590127

**OM642.830**  
6 Sil. Dizel 2987cc 170  
Kw-231 Ps 17, 7:1  
C 350 CDI (204)  
2009...

**Piston Ölçüleri**  
(Piston Dimensions)

A : 45.650  
B- : 15.510  
BØ : 47.100  
C1 : 1.430  
C2 : 1.070  
D : 71.650  
E : 10.200

Pim : 30 x 66



**Piston Özellikleri**  
(Piston Features)

Segman Taşıyıcı  
(Ring Carrier)  
Soğutma Kanallı  
(Cooling Gallery)  
Yağ Püskürtme Oyuğu  
(Oil Jet Cut-Out)  
Gözarası Konik  
(Conical Eye Gap)

**Piston Parça No**  
(Piston Part No)

87-826900-02  
87-72581-STD  
Piston Sağ (Piston Right)  
87-826900-12  
87-72582-STD  
Piston Sol (Piston Left)

**Segman Seti**  
(Ring Set)

06-826900-00-STD  
2.000 PVD GOE  
2.000 CR F14  
2.000 NT ST

**Silindir Gömleği**  
(Liner)

**Silindir Kit**  
(Assembly Set)

**Piston - Blok Montaj**  
Yüksekliği  
(Piston - Block  
Assembly Height)

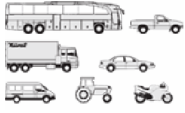
+0,53 / +0,77





MERCEDES BENZ PKW - Ø 83

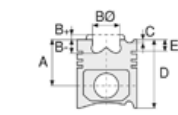
87-72607-STD



**Motor Özellikleri**  
(Engine Specifications)

İmalatçı (Manufacturer):  
MERCEDES BENZ PKW  
Çap (Diameter): Ø 83  
FM Grup No: 590134

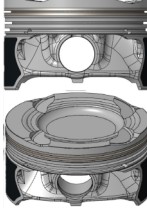
**M 274 910**  
4 Sil. Benzinli 1595cc  
75-115 KW / 102-156  
PS 10,3  
A 180, A 200, B 180,  
B 200, C 180, C 200,  
E 180, E 200  
2011...



**Piston Ölçüleri**  
(Piston Dimensions)

A : 30.900  
B - : 6.000  
BØ : 68.000  
C1 : 3.300  
C2 : 3.150  
D : 50.900  
E : 6.500

Pim: 20 x 51



**Piston Özellikleri**  
(Piston Features)

Segman Taşıyıcı  
(Ring Carrier)  
Gözarası Konik  
(Conical Eye Gap)



**Piston Parça No**  
(Piston Part No)

87-865507-23  
87-72607-0501  
0,20 mm Kısa (Short)  
  
87-865500-22  
87-72607-STD  
  
87-865507-22  
87-72607 0,50  
  
87-865500-23  
87-72607-STD1  
0,20 mm Kısa (Short)



**Segman Seti**  
(Ring Set)

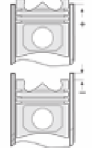
06-865500-50 STD  
06-865507-00 0,50 mm  
  
1.200 NT ST  
1.500 P GOE  
2.000 CR ST



**Silindir Gömleği**  
(Liner)



**Silindir Kit**  
(Assembly Set)



**Piston - Blok Montaj**  
Yüksekliği  
(Piston - Block  
Assembly Height)





**Motor Özellikleri**  
(Engine Specifications)

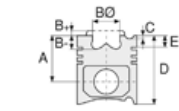
İmalatçı (Manufacturer):  
MERCEDES BENZ PKW-  
RENAULT  
Çap (Diameter): Ø 85,01  
FM Grup No: 7277

**M9T EURO 4/5**

4 Sil. Dizel 2298cc 74-107  
KW/101-146PS MASTER III  
2.3 DCI 100, MASTER III  
2.3 DCI 125  
2010...

**OM 699.300 /  
OM 699.301**

4 Sil. Dizel 2298cc 120-140  
KW/163-190PS  
X 220 d, X 250 d  
2017...



**Piston Ölçüleri**  
(Piston Dimensions)

A : 48.000  
B - : 16.200  
BØ : 50.000  
BY : 0.500  
C1 : 0.450  
D : 76.000  
E : 9.100

Pim : 32 x 65



**Piston Özellikleri**  
(Piston Features)

Segman Taşıyıcı  
(Ring Carrier)  
Soğutma Kanallı  
(Cooling Gallery)  
Yağ Püskürtme Oyuğu  
(Oil Jet Cut-Out)  
Gözarası Konik  
(Conical Eye Gap)



**Piston Parça No**  
(Piston Part No)

87-888207-03  
87-71959-0501  
0,20 mm Kısa (Short)

87-888200-02  
87-71959-STD

87-888205-02  
87-71959-0,25

87-888207-02  
87-71959-0,50

87-888200-03  
87-71959-STD1  
0,20 mm Kısa (Short)



**Segman Seti**  
(Ring Set)

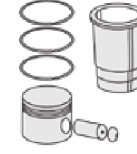
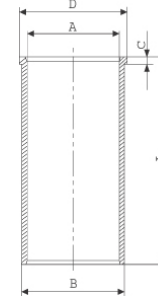
06-888200-90-STD  
06-888205-90-0,25  
06-888207-90-0,50 mm  
2.500 CKP KV1  
2.000 CKP GOE  
2.000 CRP GOE

Yağ Segmanı Matkap Delik  
(Oil Ring Drill Hole)

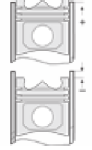


**Silindir Gömleği**  
(Liner)

14-022350-00-D  
B : 88.000  
L : 168.000  
D : 89.500  
C : 5.000



**Silindir Kit**  
(Assembly Set)



**Piston - Blok Montaj**  
Yüksekliği  
(Piston - Block  
Assembly Height)

+0,30 / +0,60





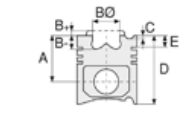


**Motor Özellikleri**  
(Engine Specifications)

İmalatçı (Manufacturer):  
MERCEDES BENZ PKW  
Çap (Diameter): Ø 86  
FM Grup No: 5808

**M 110.920-926/931-  
933/981-992**

6 Sil. Benzinli 2746cc 115  
Kw (156 PS) 8,7 / 9:1  
Karbüratörlü  
(With Carburetor) 280  
E Enjeksiyonlu (Injection),  
280 Karbüratörlü  
(With Carburetor),  
280 SE Enjeksiyonlu  
(Injection),  
280 SL Enjeksiyonlu  
(Injection)  
1972 - 1986



**Piston Ölçüleri**  
(Piston Dimensions)

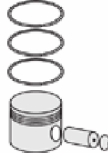
A : 42.650  
B : 14.600  
C1 : 3.800  
D : 89.200  
E : 8.100

Pim : 23 x 69



**Piston Özellikleri**  
(Piston Features)

Çelik Plaka  
(Steel Strut)  
Gözarası Düz  
(Flat Eye Gap)



**Piston Parça No**  
(Piston Part No)

87-176600-12  
87-70465-STDA  
87-176607-12  
87-70465-050A  
87-176611-12  
87-70465-100A



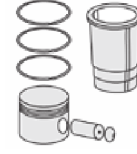
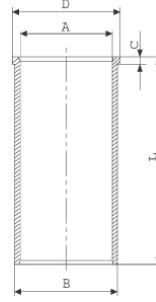
**Segman Seti**  
(Ring Set)

06-176600-90-STD  
06-176607-90-0,50 mm  
06-176611-90-1,00 mm  
1.750 CKP KV1  
2.500 CKP STD  
4.000 CRP STD

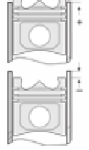


**Silindir Gömleği**  
(Liner)

14-028770-00-D  
B : 89.940  
L : 141.500  
D : 90.900  
C : 6.000



**Silindir Kit**  
(Assembly Set)



**Piston - Blok Montaj**  
Yüksekliği  
(Piston - Block  
Assembly Height)





MERCEDES BENZ PKW - Ø 87

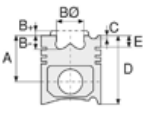
06-165100-00-STD



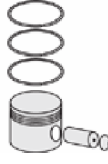
**Motor Özellikleri**  
(Engine Specifications)

İmalatçı (Manufacturer):  
MERCEDES BENZ PKW  
Çap (Diameter): Ø 87  
FM Grup No: 5810

OM 621.912-916/918  
/919/930/932  
4 Sil. Dizel 1988cc  
33/41 Kw (45/55 PS) 21:1  
180 D, 190 D, 406 D  
1961 - 1964



**Piston Ölçüleri**  
(Piston Dimensions)



**Piston Parça No**  
(Piston Part No)



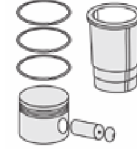
**Segman Seti**  
(Ring Set)

06-165100-00-STD  
06-165107-00-0,50 mm  
06-165111-00-1,00 mm

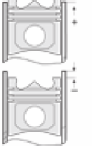
2.000 CRP IKA  
2.000 P STD  
2.000 P STD  
5.000 CRP STD



**Silindir Gömleği**  
(Liner)



**Silindir Kit**  
(Assembly Set)



**Piston - Blok Montaj**  
Yüksekliği  
(Piston - Block  
Assembly Height)





MERCEDES BENZ PKW - Ø 87

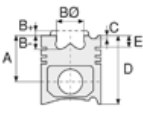
06-175500-90-STD



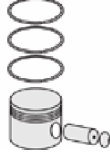
**Motor Özellikleri**  
(Engine Specifications)

İmalatçı (Manufacturer):  
MERCEDES BENZ PKW  
Çap (Diameter): Ø 87  
FM Grup No: 5811

**M115.923/926/938/939**  
4 Sil. Benzinli 1988cc 77  
Kw (105 PS) 9:1 200, 220  
1967 - 1980



**Piston Ölçüleri**  
(Piston Dimensions)



**Piston Parça No**  
(Piston Part No)



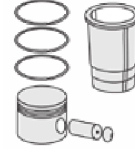
**Segman Seti**  
(Ring Set)

06-175500-90-STD  
06-175507-90-0,50 mm  
06-175511-90-1,00 mm

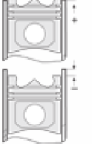
1.500 CKP KV1  
2.500 P STD  
4.000 CRP STD



**Silindir Gömleği**  
(Liner)



**Silindir Kit**  
(Assembly Set)



**Piston - Blok Montaj**  
Yüksekliği  
(Piston - Block  
Assembly Height)





MERCEDES BENZ PKW - Ø 87

06-183200-00-STD



**Motor Özellikleri**  
(Engine Specifications)

İmalatçı (Manufacturer):  
MERCEDES BENZ PKW  
Çap (Diameter): Ø 87  
FM Grup No: 5811

**OM 601.911/912**

4 Sil. Dizel 1977cc  
53 Kw (72 PS) 22:1  
190 D, 200 D  
1983 - 1984

**OM 601.913/921**

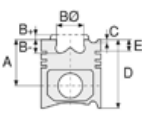
4 Sil. Dizel 1997cc  
55 Kw (75 PS) 22:1  
190 D, 200 D,  
C200 D, E200 D  
1993 - 1995

**OM 602.911**

5 Sil. Dizel 2497cc 69  
Kw (94 PS) 22:1  
190 D, 250 D, 250 GD  
1984 - 1993

**OM 603**

6 Sil. Dizel 2996cc  
80/83 Kw (109/113 PS) 22:1  
300 D, 300 GD  
1973 - 1985



**Piston Ölçüleri**  
(Piston Dimensions)



**Piston Parça No**  
(Piston Part No)



**Segman Seti**  
(Ring Set)

06-183200-00-STD  
06-183205-00-0,25 mm  
06-183207-00-0,50 mm

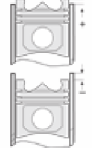
2.000 CRP KV1  
2.000 P F14  
3.000 CRP STD



**Silindir Gömleği**  
(Liner)



**Silindir Kit**  
(Assembly Set)



**Piston - Blok Montaj**  
Yüksekliği  
(Piston - Block  
Assembly Height)





MERCEDES BENZ PKW - Ø 87

06-743600-00-STD



**Motor Özellikleri**  
(Engine Specifications)

İmalatçı (Manufacturer):  
MERCEDES BENZ PKW  
Çap (Diameter): Ø 87  
FM Grup No: 5809

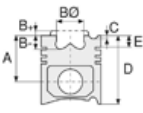
**OM 601**  
4 Sil. Dizel 190 D  
1979 - 1985

**OM 602**  
4 Sil. Dizel 190 D  
1979 - 1984

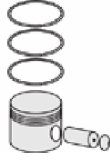
**OM 603**  
4 Sil. Dizel 190 D  
1984...

**OM 605**  
5 Sil. Dizel 250 D

**OM 606**  
6 Sil. Dizel 300 D  
1979 - 1985



**Piston Ölçüleri**  
(Piston Dimensions)



**Piston Parça No**  
(Piston Part No)



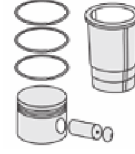
**Segman Seti**  
(Ring Set)

06-743600-00-STD  
06-743607-00-0,50 mm  
06-743611-00-1,00 mm

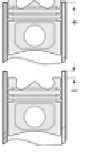
2.500 CRP KV1  
2.000 P F14  
3.000 CRP STD



**Silindir Gömleği**  
(Liner)



**Silindir Kit**  
(Assembly Set)



**Piston - Blok Montaj**  
Yüksekliği  
(Piston - Block  
Assembly Height)




**Motor Özellikleri**  
(Engine Specifications)

İmalatçı (Manufacturer):  
MERCEDES BENZ PKW  
Çap (Diameter): Ø 87  
FM Grup No: 5813

**OM 601**

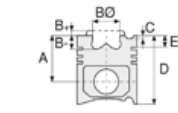
4 Sil. Dizel 1997cc 53  
Kw (72 PS) 22:1  
190 D, 200 D  
1984 - 1991

**OM 602**

5 Sil. Dizel 2497cc 66  
Kw (90 PS) 22:1  
190 D 2.5, 250 D  
1984 - 1991

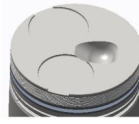
**OM 603**

6 Sil. Dizel 2996cc 80  
Kw (109 PS) 22:1 300 D  
1984 - 1994

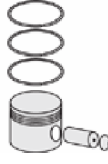

**Piston Ölçüleri**  
(Piston Dimensions)

A : 44.850  
B - : 9.050  
C1 : 1.050  
C2 : 1.250  
D : 74.850  
E : 12.800

Pim : 26 x 55


**Piston Özellikleri**  
(Piston Features)

Segman Taşıyıcı  
(Ring Carrier)  
Çelik Plaka  
(Steel Strut)  
Yağ Püskürtme Oyuğu  
(Oil Jet Cut-Out)  
Gözarası Düz  
(Flat Eye Gap)


**Piston Parça No**  
(Piston Part No)

87-743600-02  
87-70467-STD  
  
87-743607-02  
87-70467-050A  
  
87-743611-02  
87-70467-1,00A

87-183300-12  
87-70467-STD B

87-183307-12  
87-70467-050 B


**Segman Seti**  
(Ring Set)

06-743600-00-STD  
06-743607-00-0,50 mm  
06-743611-00-1,00 mm

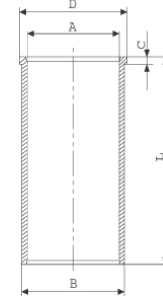
2.500  CRP KV1  
2.000  P F14  
3.000  CRP STD

06-183300-90-STD  
06-183307-90-0,50 mm

2.500  CKP KV1  
2.000  CKP KV1  
3.000  CRP STD

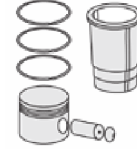
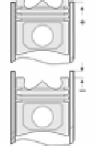

**Silindir Gömleği**  
(Liner)

14-022180-00-D  
B : 90.000  
L : 148.600  
D : 92.550  
C : 4.700



14-022181-00-D  
B : 90.500  
L : 148.600  
D : 93.050  
C : 5200.000

Dış Çap 0,50 mm Farklı  
(Outside Diameter  
0.50mm Different)


**Silindir Kit**  
(Assembly Set)

**Piston - Blok Montaj**  
Yüksekliği  
(Piston - Block  
Assembly Height)

+ 0,735 / + 0,965

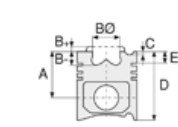




**Motor Özellikleri**  
(Engine Specifications)

İmalatçı (Manufacturer):  
MERCEDES BENZ PKW  
Çap (Diameter): Ø 87  
FM Grup No: 5815

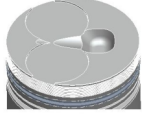
**OM 615.940,943,944**  
4 Sil. Dizel 1988cc 44  
Kw (60 PS) 21:1 200 D  
1979 - 1985



**Piston Ölçüleri**  
(Piston Dimensions)

A : 52.900  
B - : 9.000  
C1 : 1.200  
D : 91.400  
E : 16.600

Pim : 26 x 72



**Piston Özellikleri**  
(Piston Features)

Segman Taşıyıcı  
(Ring Carrier)  
Çelik Plaka  
(Steel Strut)  
Gözarası Düz  
(Flat Eye Gap)



**Piston Parça No**  
(Piston Part No)

87-170700-02  
87-70472-STD  
87-170707-02  
87-70472-050  
87-170711-02  
87-70472-100



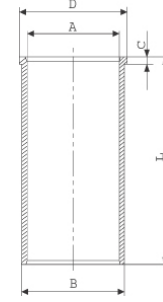
**Segman Seti**  
(Ring Set)

06-170700-00-STD  
06-170707-00-0,50 mm  
06-170711-00-1,00 mm  
2.000 CRP KV1  
2.000 P STD  
4.000 CRP STD



**Silindir Gömleği**  
(Liner)

14-022190-00-D  
B : 90.000  
L : 158.400  
D : 92.000  
C : 4.700

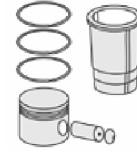


14-022191-00-D  
B : 90.500  
L : 158.400  
D : 92.500  
C : 4.700

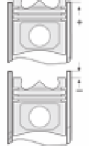
Dış Çap 0,50 mm Farklı  
(Outside Diameter  
0.50mm Different)

14-022192-00-D  
B : 91.000  
L : 158.400  
D : 93.000  
C : 4.700

Dış Çap 1,00 mm Farklı  
(Outside Diameter  
1.00mm Different)



**Silindir Kit**  
(Assembly Set)



**Piston - Blok Montaj**  
Yüksekliği  
(Piston - Block  
Assembly Height)

+ 0,65 / + 1,05

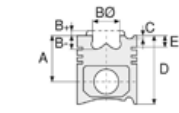




**Motor Özellikleri**  
(Engine Specifications)

İmalatçı (Manufacturer):  
MERCEDES BENZ PKW  
Çap (Diameter): Ø 87  
FM Grup No: 5817

**M115.923/926/938/939**  
4 Sil. Benzinli 1988cc 62-70  
Kw (85-95PS) 9:1 200, 220  
1968 - 1980



**Piston Ölçüleri**  
(Piston Dimensions)

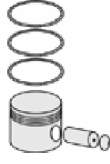
A : 52.400  
D : 84.400  
E : 14.200

Pim : 26 x 72



**Piston Özellikleri**  
(Piston Features)

Çelik Plaka  
(Steel Strut)  
Gözarası Düz  
(Flat Eye Gap)



**Piston Parça No**  
(Piston Part No)

87-181600-12  
87-70474-STDA

87-181607-12  
87-70474-050A

87-181611-12  
87-70474-100A



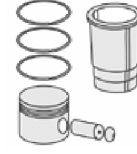
**Segman Seti**  
(Ring Set)

06-181600-90-STD  
06-181607-90-0,50 mm  
06-181611-90-1,00 mm

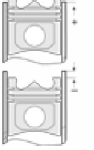
1.750 CKP KV1  
2.500 P F14  
4.000 CRP STD



**Silindir Gömleği**  
(Liner)



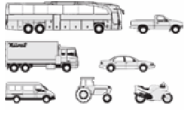
**Silindir Kit**  
(Assembly Set)



**Piston - Blok Montaj**  
Yüksekliği  
(Piston - Block  
Assembly Height)







**Motor Özellikleri**  
(Engine Specifications)

İmalatçı (Manufacturer):  
MERCEDES BENZ PKW  
Çap (Diameter): Ø 87  
FM Grup No: 5819

**OM 615.910-912,914,  
916,917**

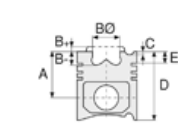
4 Sil. Dizel 2197cc 44-49  
Kw (60-67PS) 21:1 206 D,  
220 D, 306, 406, 408, 409,  
O 309, U 45, U 52  
1968 - 1978

**OM 615.941**

4 Sil. Dizel 2197cc 44  
Kw (60 PS) 21:1 206 D,  
220 D, 306, 406, 408,  
409, O 309, U 45, U 52  
1972 - 1978

**OM 615.918,919,930,  
936-939**

4 Sil. Dizel 2197cc 37Kw  
(50 PS) 21:1 206 D, 220 D,  
306, 406, 408, 409,  
O 309, U 45, U 52  
1968 - 1972



**Piston Ölçüleri**  
(Piston Dimensions)

A : 48.250  
B - : 6.350  
BØ : 57.000  
BX : 5.000  
C1 : 1.100  
D : 89.650  
E : 15.250

Pim : 26 x 72



**Piston Özellikleri**  
(Piston Features)

Segman Taşıyıcı  
(Ring Carrier)  
Çelik Plaka  
(Steel Strut)  
Gözarası Düz  
(Flat Eye Gap)



**Piston Parça No**  
(Piston Part No)

87-170600-12  
87-70477-STD A  
87-170607-12  
87-70477-050A  
87-170611-12  
87-70477-100A



**Segman Seti**  
(Ring Set)

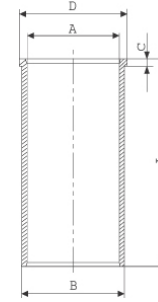
06-170600-90-STD  
06-170607-90-0,50 mm  
06-170611-90-1,00 mm

1.600 CKP KV1  
1.500 P STD  
2.500 CR ST



**Silindir Gömleği**  
(Liner)

14-022190-00-D  
B : 90.000  
L : 158.400  
D : 92.000  
C : 4.700

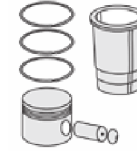


14-022191-00-D  
B : 90.500  
L : 158.400  
D : 92.500  
C : 4.700

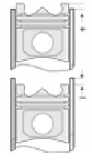
Dış Çap 0,50mm Farklı  
(Outside Diameter  
0.50mm Different)

14-022192-00-D  
B : 91.000  
L : 158.400  
D : 93.000  
C : 4.700

Dış Çap 1,00mm Farklı  
(Outside Diameter  
1.00mm Different)



**Silindir Kit**  
(Assembly Set)



**Piston - Blok Montaj**  
Yüksekliği  
(Piston - Block  
Assembly Height)

+ 0,40 / + 0,70





MERCEDES BENZ PKW - Ø 87

87-72596-STD



**Motor Özellikleri**  
(Engine Specifications)

İmalatçı (Manufacturer):  
MERCEDES BENZ PKW  
Çap (Diameter): Ø 87  
FM Grup No: 587001

**OM605 910/911/912/917**  
5 Sil. Dizel 2497cc 83  
KW (113 PS) 22:1 C 250 D,  
E 250 D, E 250 TD  
1993 - 1996

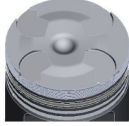
**OM606 910/912**  
6 Sil. Dizel 2996cc 100  
KW (136 PS) 22:1 E 300 D  
1993 - 1996

**OM604 915/917**  
4 Sil. Dizel 1997cc 83  
KW (113 PS) 22:1 C 200 D  
1996 - 1999

**Piston Ölçüleri**  
(Piston Dimensions)

A : 44.900  
B- : 5.920  
BØ : 1.320  
C1 : 2.410  
C2 : 2.260  
D : 76.220  
E : 12.880

Pim : 26 x 55

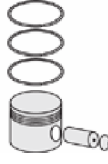


**Piston Özellikleri**  
(Piston Features)

Segman Taşıyıcı  
(Ring Carrier)  
Gözarası Düz  
(Flat Eye Gap)

**Piston Parça No**  
(Piston Part No)

87-743600-22  
87-72596-STD  
  
87-743607-22  
87-72596-050



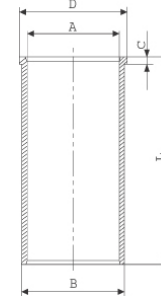
**Segman Seti**  
(Ring Set)

06-743600-00-STD  
06-743607-00-0,50 mm  
06-743611-00-1,00 mm  
  
2.500 CRP KV1  
2.000 P F14  
3.000 CRP STD



**Silindir Gömleği**  
(Liner)

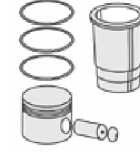
14-022180-00-D  
B : 90.000  
L : 148.600  
D : 92.550  
C : 4.700



14-022181-00-D  
B : 90.500  
L : 148.600  
D : 93.050  
C : 5200.000

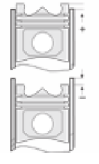
Dış Çap 0,50mm Farklı  
(Outside Diameter  
0.50mm Different)

**Silindir Kit**  
(Assembly Set)



**Piston - Blok Montaj**  
Yüksekliği  
(Piston - Block  
Assembly Height)

+0,74 / +0,97





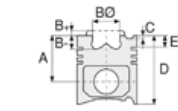
**Motor Özellikleri**  
(Engine Specifications)

İmalatçı (Manufacturer):  
MERCEDES BENZ PKW  
Çap (Diameter): Ø 87  
FM Grup No: 5872

**OM 602A 911,961,  
962,993**

5 Sil. Dizel 2496cc 90-93  
KW (122-126 PS) 22:1 190 D  
2,5, 250 D Turbo, E 250 TD  
1988 - 1995

**OM 603A 960,961,963**  
6 Sil. Dizel 2996cc 105-108  
KW (143-147 PS) 22:1 300 D,  
300 SD, 300 TD, 300 TD  
Turbo, E 300 TD  
1985 - 1996



**Piston Ölçüleri**  
(Piston Dimensions)

A : 44.850  
B - : 9.100  
C1 : 1.050  
C2 : 1.250  
D : 74.850  
E : 13.000

Pim : 28 x 70



**Piston Özellikleri**  
(Piston Features)

Segman Taşıyıcı  
(Ring Carrier)  
Sert Anotlama  
(Hard Anodizing)  
Soğutma Kanallı  
(Cooling Gallery)  
Yağ Püskürtme Oyuğu  
(Oil Jet Cut-Out)  
Gözarası Düz  
(Flat Eye Gap)



**Piston Parça No**  
(Piston Part No)

87-183300-32  
87-72597-STD A

87-183307-32  
87-72597-050A



**Segman Seti**  
(Ring Set)

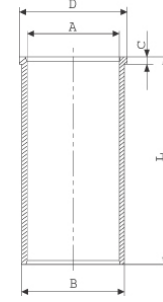
06-183300-90-STD  
06-183307-90-0,50 mm

2.500 CKP Kv1  
2.000 CKP KV1  
3.000 CRP STD



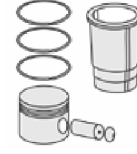
**Silindir Gömleği**  
(Liner)

14-022180-00-D  
B : 90.000  
L : 148.600  
D : 92.550  
C : 4.700

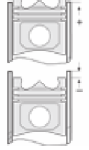


14-022181-00 D  
B : 90.500  
L : 148.600  
D : 93.050  
C : 5200.000

Dış Çap 0,50mm Farklı  
(Outside Diameter  
0.50mm Different)



**Silindir Kit**  
(Assembly Set)



**Piston - Blok Montaj**  
Yüksekliği  
(Piston - Block  
Assembly Height)

+0,73 / +0,96





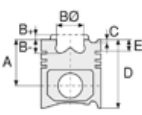
**Motor Özellikleri**  
(Engine Specifications)

İmalatçı (Manufacturer):  
MERCEDES BENZ PKW  
Çap (Diameter): Ø 88  
FM Grup No: 5870

**OM 611 DE 22LA**  
4 Sil. Dizel 2151cc 85/115  
Kw (116/156 PS) 18:1  
Common Rail Turbo  
C200/220 CDI, E200/  
220 CDI, SPRINTER CDI,  
V200/220 CDI, VITO CDI  
1998 - 2003

**OM 612.963/981 Euro 3**  
5 Sil. Dizel 2688cc 125  
Kw (170 PS) 18:1  
Common Rail Turbo  
C270 CDI, E270 CDI,  
ML270 CDI 4X4  
1999 - 2005

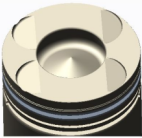
**OM 613.960/961**  
6 Sil. Dizel 3226cc  
145 Kw (197 PS) 18:1  
Common Rail Turbo  
E 320 CDI, S 320  
1999 - 2003



**Piston Ölçüleri**  
(Piston Dimensions)

A : 42.300  
B - : 13.800  
BØ : 43.500  
C1 : 1.900  
C2 : 2.400  
D : 72.300  
E : 10.200

Pim : 30 x 70



**Piston Özellikleri**  
(Piston Features)

Segman Taşıyıcı  
(Ring Carrier)  
Soğutma Kanallı  
(Cooling Gallery)  
Gözarası Düz  
(Flat Eye Gap)



**Piston Parça No**  
(Piston Part No)

87-117900-02  
87-70499-STD

87-117907-02  
87-70499-050

87-117911-02  
87-70499-100

87-117900-03  
87-70499-STD1  
0,20 mm Kısa (Short)

87-117907-03  
87-70499-501  
0,20 mm Kısa (Short)



**Segman Seti**  
(Ring Set)

06-117900-00-STD  
06-117907-00-0,50 mm  
06-117911-00-1,00 mm

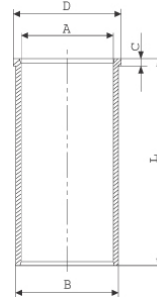
2.500 CKP KV4  
2.000 P IKA  
3.000 CRP STD

Goetze® LKZ-Ring®



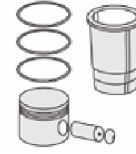
**Silindir Gömleği**  
(Liner)

14-020300-00-D  
B : 91.000  
L : 147.000  
D : 93.000  
C : 5.000

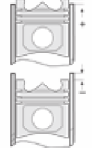


14-020301-00-D  
B : 91.500  
L : 147.000  
D : 93.500  
C : 5.500

Dış Çap 0,50mm Farklı  
(Outside Diameter  
0.50mm Different)



**Silindir Kit**  
(Assembly Set)



**Piston - Blok Montaj**  
Yüksekliği  
(Piston - Block  
Assembly Height)

+0,38 / +0,62





MERCEDES BENZ PKW - Ø 88

87-72532-STD



**Motor Özellikleri**  
(Engine Specifications)

İmalatçı (Manufacturer):  
MERCEDES BENZ PKW  
Çap (Diameter): Ø 88  
FM Grup No: 5866

**OM646.961/951/962**  
**/963/966**

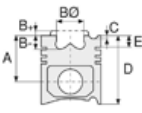
4 Sil. Dizel 2148cc 110  
Kw(150 PS) 18:1  
Turbo ,Intercool,  
Common Rail  
SPRINTER 213CDI,  
SPRINTER 313CDI,  
SPRINTER 413CDI,  
VITO- VIANO CDI,  
VITO C220 CDI W203,  
VITO E220 CDI W211  
2002 - 2006

**OM647.961/981**

5 Sil. Dizel 2685cc 130  
Kw(177 PS) 18:1  
Turbo ,Intercool,  
Common Rail E270CDI  
2002 - 2005

**OM648.960/961**

6 Sil. Dizel 3222cc 150  
Kw(204 PS) 18:1  
Turbo ,Intercool,  
Common Rail  
E320 CDI, S320 CDI  
2002 - 2005



**Piston Ölçüleri**  
(Piston Dimensions)

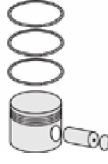
A : 42.300  
B- : 14.100  
BØ : 46.000  
C1 : 1.780  
C2 : 2.030  
D : 72.300  
E : 10.200

Pim : 30 x 70



**Piston Özellikleri**  
(Piston Features)

Segman Taşıyıcı  
(Ring Carrier)  
Soğutma Kanallı  
(Cooling Gallery)  
Gözarası Konik  
(Conical Eye Gap)



**Piston Parça No**  
(Piston Part No)

87-877507-03  
87-72532-0501  
0,20 mm Kısa (Short)

87-877511-02  
87-72532-100

87-877500-02  
87-72532-STD

87-877507-02  
87-72532-050

87-877500-03  
87-72532-STD1  
0,20 mm Kısa (Short)



**Segman Seti**  
(Ring Set)

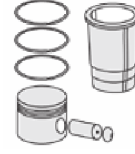
06-877500-00-STD  
06-877507-00-0,50 mm  
06-877511-00-1,00 mm

2.500  CKP KV4  
2.000  CRP KV4  
3.000  CRP GOE

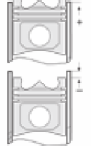
Goetze® LKZ-Ring®



**Silindir Gömleği**  
(Liner)



**Silindir Kit**  
(Assembly Set)



**Piston - Blok Montaj**  
Yüksekliği  
(Piston - Block  
Assembly Height)

+0,38 / +0,62



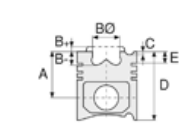


**Motor Özellikleri**  
(Engine Specifications)

İmalatçı (Manufacturer):  
MERCEDES BENZ PKW  
Çap (Diameter): Ø 88  
FM Grup No: 5877

**OM 646 986 C.Rail**  
**Euro 4**

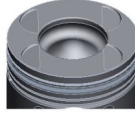
4 Sil. Dizel 2150cc 65/80/  
95/110 Kw(88/109/  
129/150 Ps) Sprinter  
209CDI, Sprinter  
211CDI, Sprinter  
213CDI, Sprinter  
215CDI, Sprinter  
309CDI, Sprinter  
311CDI, Sprinter  
313CDI, Sprinter  
315CDI, Sprinter  
411CDI, Sprinter  
415CDI, Sprinter  
509CDI, Sprinter  
511CDI, Sprinter  
515CDI  
2007...



**Piston Ölçüleri**  
(Piston Dimensions)

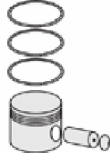
A : 42.400  
B- : 14.100  
BØ : 46.000  
C1 : 2.030  
C2 : 1.780  
D : 72.300  
E : 10.200

Pim : 30 x 70



**Piston Özellikleri**  
(Piston Features)

Segman Taşıyıcı  
(Ring Carrier)  
Soğutma Kanallı  
(Cooling Gallery)  
Yağ Püskürtme Oyuğu  
(Oil Jet Cut-Out)  
Burçlu Piston  
(Bushing Piston)  
Gözarası Konik  
(Conical Eye Gap)



**Piston Parça No**  
(Piston Part No)

87-826507-23  
87-72565-0501A  
0,30 mm Kısa (Short)  
  
87-826511-22  
87-72565-100A  
  
87-826500-23  
87-72565-STD1A  
0,30 mm Kısa (Short)  
  
87-826500-22  
87-72565-STDA  
  
87-826507-22  
87-72565-0,50A



**Segman Seti**  
(Ring Set)

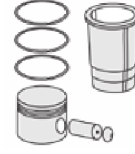
06-826500-90-STD  
06-826507-90-0,50 mm  
06-826511-90-1,00 mm

2.500 CK KV4  
2.000 CR KV1  
2.000 CR KV1

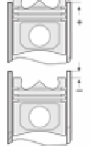
Goetze® LKZ-Ring®  
Yağ Segmanı Matkap Delik  
(Oil Ring Drill Hole)



**Silindir Gömleği**  
(Liner)



**Silindir Kit**  
(Assembly Set)



**Piston - Blok Montaj**  
**Yüksekliği**  
(Piston - Block  
Assembly Height)

+0,38 / +0,62





MERCEDES BENZ PKW - Ø 88

87-72591-STD

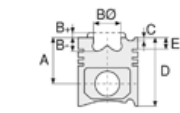


**Motor Özellikleri**  
(Engine Specifications)

İmalatçı (Manufacturer):  
MERCEDES BENZ PKW  
Çap (Diameter): Ø 88  
FM Grup No: 590128

**OM 646.966**

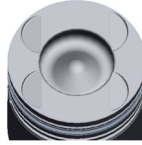
4 Sil. Dizel 110KW-150PS  
C 200 CDI, C 220 CDI,  
E 200 CDI, E 220 CDI  
2007...



**Piston Ölçüleri**  
(Piston Dimensions)

A : 44.300  
B - : 13.800  
B0 : 47.000  
C1 : 2.307  
C2 : 2.290  
D : 74.300  
E : 10.200

Pim : 30 x 70



**Piston Özellikleri**  
(Piston Features)

Segman Taşıyıcı  
(Ring Carrier)  
Soğutma Kanallı  
(Cooling Gallery)  
Yağ Püskürtme Oyuğu  
(Oil Jet Cut-Out)  
Gözarası Konik  
(Conical Eye Gap)



**Piston Parça No**  
(Piston Part No)

87-877500-22  
87-72591-STD  
  
87-877507-22  
87-72591-0,50



**Segman Seti**  
(Ring Set)

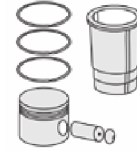
06-877500-00-STD  
06-877507-00-0,50 mm  
06-877511-00-1,00 mm

2.500 CKP KV4  
2.000 CRP KV4  
3.000 CRP GOE

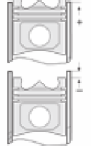
Goetze® LKZ-Ring®



**Silindir Gömleği**  
(Liner)



**Silindir Kit**  
(Assembly Set)



**Piston - Blok Montaj**  
Yüksekliği  
(Piston - Block  
Assembly Height)

+0,38 / +0,62





**Motor Özellikleri**  
(Engine Specifications)

İmalatçı (Manufacturer):  
MERCEDES BENZ PKW  
Çap (Diameter): Ø 88  
FM Grup No: 5874

**OM611 DE22 LA Euro 3**

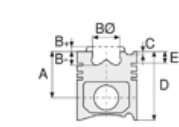
4 Sil. Dizel 2151cc  
85-115 KW (143PS) 19:1  
Turbo ,Intercool,  
Common Rail C200 CDI,  
C220 CDI, E200 CDI,  
E220 CDI, SPRINTER 213,  
SPRINTER 313, SPRINTER  
413 CDI, V200 CDI,  
V220CDI, VITO CDI  
1998 - 2003

**OM 612 DE27LA Euro 3**

5 Sil. Dizel 2688cc  
125 KW (170 PS) 18:1  
Turbo ,Intercool,  
Common Rail C270 CDI,  
E270 CDI, ML270 CDI 4x4  
1999 - 2006

**OM 613 Euro 3**

6 Sil. Dizel 3226cc  
145 KW (197 PS) 18:1  
Turbo ,Intercool,  
Common Rail E320 CDI,  
S320  
1999 - 2005



**Piston Ölçüleri**  
(Piston Dimensions)

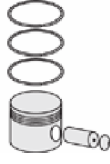
A : 42.300  
B - : 13.800  
BØ : 43.500  
C1 : 1.900  
C2 : 2.200  
D : 72.300  
E : 10.200

Pim : 30 x 70



**Piston Özellikleri**  
(Piston Features)

Segman Taşıyıcı  
(Ring Carrier)  
Soğutma Kanallı  
(Cooling Gallery)  
Gözarası Konik  
(Conical Eye Gap)



**Piston Parça No**  
(Piston Part No)

87-117907-43  
87-72598-0501  
0,20 mm Kısa (Short)

87-117900-42  
87-72598-STD

87-117907-42  
87-72598-050

87-117900-43  
87-72598-STD1  
0,20 mm Kısa (Short)

87-117911-42  
87-72598 1,00



**Segman Seti**  
(Ring Set)

06-117900-00-STD  
06-117907-00-0,50 mm  
06-117911-00-1,00 mm

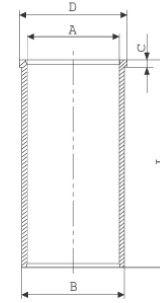
2.500 CKP KV4  
2.000 P IKA  
3.000 CRP STD

Goetze® LKZ-Ring®



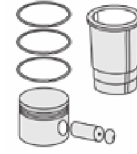
**Silindir Gömleği**  
(Liner)

14-020300-00-D  
B : 91.000  
L : 147.000  
D : 93.000  
C : 5.000

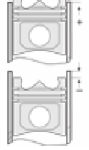


14-020301-00-D  
B : 91.500  
L : 147.000  
D : 93.500  
C : 5.500

Dış Çap 0,50mm Farklı  
(Outside Diameter  
0.50mm Different)



**Silindir Kit**  
(Assembly Set)



**Piston - Blok Montaj**  
Yüksekliği  
(Piston - Block  
Assembly Height)

+0,38 / +0,62







MERCEDES BENZ PKW - Ø 88

87-72599-STD



**Motor Özellikleri**  
(Engine Specifications)

İmalatçı (Manufacturer):  
MERCEDES BENZ PKW  
Çap (Diameter): Ø 88  
FM Grup No: 5869

**OM 611 DE 22LA**

4 Sil. Dizel 2151cc 85-115  
Kw(116/156 PS) 18:1  
Turbo ,Intercool,  
Common Rail C200 CDI,  
C220 CDI, E200 CDI,  
E220 CDI , SPRINTER CDI,  
V200 CDI, V220CDI,  
VITO CDI  
1996 - 2000

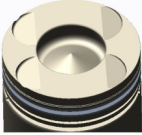
**OM 611.980 Euro 3**

4 Sil. Dizel 2151cc 60-90  
Kw(82-122 Ps) 18:1  
Turbo,Intercooler,  
Common Rail Vito  
108/110/112 CDI  
1993 - 2003

**Piston Ölçüleri**  
(Piston Dimensions)

A : 42.300  
B- : 13.300  
BØ : 43.100  
C1 : 1.910  
C2 : 2.420  
D : 72.300  
E : 10.200

Pim : 28 x 70

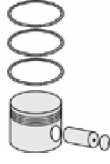


**Piston Özellikleri**  
(Piston Features)

Segman Taşıyıcı  
(Ring Carrier)  
Soğutma Kanallı  
(Cooling Gallery)  
Gözarası Konik  
(Conical Eye Gap)

**Piston Parça No**  
(Piston Part No)

87-117900-22  
87-72599-STD  
87-117907-22  
87-72599-050  
87-117911-22  
87-72599-1,00



**Segman Seti**  
(Ring Set)

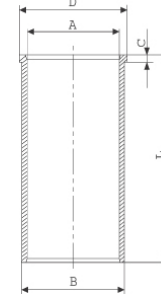
06-117900-00-STD  
06-117907-00-0,50 mm  
06-117911-00-1,00 mm

2.500 CKP KV4  
2.000 P IKA  
3.000 CRP STD  
Goetze® LKZ-Ring®



**Silindir Gömleği**  
(Liner)

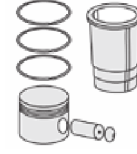
14-020300-00-D  
B : 91.000  
L : 147.000  
D : 93.000  
C : 5.000



14-020301-00-D  
B : 91.500  
L : 147.000  
D : 93.500  
C : 5.500

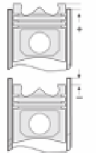
Dış Çap 0,50mm Farklı  
(Outside Diameter  
0.50mm Different)

**Silindir Kit**  
(Assembly Set)



**Piston - Blok Montaj**  
Yüksekliği  
(Piston - Block  
Assembly Height)

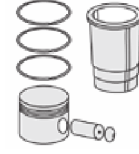
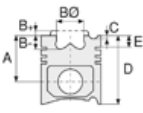
+0,38 / +0,62





MERCEDES BENZ PKW - Ø 88,5

87-70462-STD



**Motor Özellikleri**  
(Engine Specifications)

**Piston Ölçüleri**  
(Piston Dimensions)

**Piston Parça No**  
(Piston Part No)

**Segman Seti**  
(Ring Set)

**Silindir Gömleği**  
(Liner)

**Silindir Kit**  
(Assembly Set)

**Piston - Blok Montaj**  
Yüksekliği  
(Piston - Block  
Assembly Height)

İmalatçı (Manufacturer):  
MERCEDES BENZ PKW  
Çap (Diameter): Ø 88,5  
FM Grup No: 5823

A : 33.000  
B- : 2.700  
BX : 4.200  
BY : 9.500  
C1 : 0.820  
C2 : 2.020  
D : 63.000  
E : 6.350

87-183000-02  
87-70462-STD  
87-183007-02  
87-70462-050  
87-183011-02  
87-70462-100

06-183000-00-STD  
06-183007-00-0,50 mm  
06-183011-00-1,00 mm

1.500 CRP KV1  
1.750 P F14  
3.000 CRP STD

**M103 E30.981/  
982/983/985**

6 Sil. Benzinli 2962cc  
132/130 Kw

(180/190 PS) 10:1

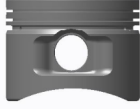
Enjektörlü (With Injector),  
Katalizörlü (With Catalyst)

300 E, 300 GE,

300 SE, 300 SL

1985 - 1992

Pim : 22 x 52



**Piston Özellikleri**  
(Piston Features)

Çelik Plaka  
(Steel Strut)  
Gözarası Düz  
(Flat Eye Gap)





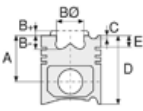
**Motor Özellikleri**  
(Engine Specifications)

İmalatçı (Manufacturer):  
MERCEDES BENZ PKW  
Çap (Diameter): Ø 89  
FM Grup No: 5824

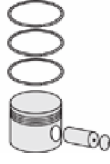
**M102 E18.910/918/919**  
4 Sil. Benzinli 1797cc 77/80  
Kw (105/109 PS) 9:1  
190E 1.8  
1990...

**M102 E20.919-922/924**  
**/938/939/942/943/**  
**945/961-965**  
4 Sil. Benzinli 1997cc 62/93  
Kw (84/126 PS) 9, 1:1  
Enjeksiyonlu (Injection)  
190E, 190E Catalizörlü  
(With Catalyst),  
200CE, 200E, 200E  
Catalizörlü (With Catalyst),  
200GE, 200GE W463,  
200TE  
1982...

**M102 V20**  
4 Sil. Benzinli 1997cc 66/77  
Kw (90/105 PS) 9:1190,  
200, 200 W123, 200T,  
200T T123  
1989...



**Piston Ölçüleri**  
(Piston Dimensions)



**Piston Parça No**  
(Piston Part No)



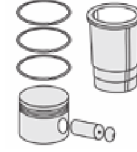
**Segman Seti**  
(Ring Set)

06-179500-00-STD  
06-179505-00-0,25 mm  
06-179507-00-0,50 mm  
06-179511-00-1,00 mm

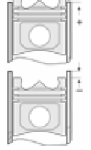
1.750 CRP KV1  
2.000 P STD  
3.500 CRP STD



**Silindir Gömleği**  
(Liner)



**Silindir Kit**  
(Assembly Set)



**Piston - Blok Montaj**  
**Yüksekliği**  
(Piston - Block  
Assembly Height)





**Motor Özellikleri**  
(Engine Specifications)

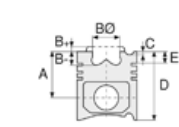
İmalatçı (Manufacturer):  
MERCEDES BENZ PKW  
Çap (Diameter): Ø 89  
FM Grup No: 5825

**OM 601.900/940-  
943/970**

4 Sil. Dizel 2299cc  
58/60 Kw (79/82 PS)  
22:1108D VITO,  
110D VITO, 207D,  
208D SPRINTER,  
307D, 308D  
SPRINTER, 407D,  
408D SPRINTER,  
507D, 508D  
1988...

**OM 602**

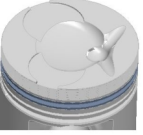
5 Sil. Dizel 2874cc 70  
Kw (95 PS) 22:1 210D,  
310D, 312D, 410D,  
412D, SPRINTER 212D  
1992...



**Piston Ölçüleri**  
(Piston Dimensions)

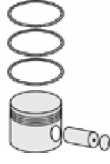
A : 44.650  
B - : 9.030  
C1 : 1.050  
C2 : 1.250  
D : 74.650  
E : 13.000

Pim : 26 x 62



**Piston Özellikleri**  
(Piston Features)

Segman Taşıyıcı  
(Ring Carrier)  
Çelik Plaka  
(Steel Strut)  
Yağ Püskürtme Oyuğu  
(Oil Jet Cut-Out)  
Gözarası Düz  
(Flat Eye Gap)



**Piston Parça No**  
(Piston Part No)

87-743100-02  
87-70456-STD

87-743107-02  
87-70456-050

87-743111-02  
87-70456-100



**Segman Seti**  
(Ring Set)

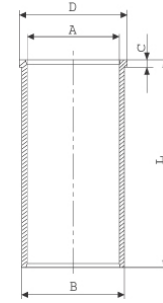
06-743100-00-STD  
06-743107-00-0,50 mm  
06-743111-00-1,00 mm

2.500 CRP KV1  
2.000 P STD  
3.000 CRP GOE



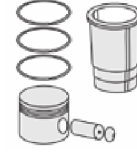
**Silindir Gömleği**  
(Liner)

14-027210-00-D  
B : 91.500  
L : 156.500  
D : 94.050  
C : 4.700

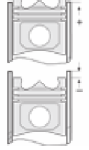


14-027211-00-D  
B : 92.000  
L : 156.500  
D : 94.050  
C : 4.700

Dış Çap 0,50mm Farklı  
(Outside Diameter  
0.50mm Different)



**Silindir Kit**  
(Assembly Set)



**Piston - Blok Montaj**  
Yüksekliği  
(Piston - Block  
Assembly Height)

1,80 mm Conta İle  
(With Gasket)  
+0,84 / +1,06

2,00 mm Conta İle  
(With Gasket)  
+0,60 / +1,06





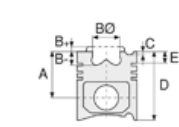
**Motor Özellikleri**  
(Engine Specifications)

İmalatçı (Manufacturer):  
MERCEDES BENZ PKW  
Çap (Diameter): Ø 89  
FM Grup No: 5830

**OM 601**  
D23.900/940/941/  
942/943

4 Sil. Dizel 2299cc  
58-60 Kw (79-82 PS) 21:1  
240D, 240GD 4X4,  
SPRINTER 308D/408 D  
/ 208 D, VİTO 180 D  
1995 - 2000

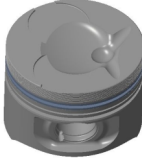
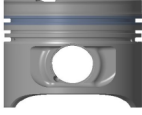
**OM 602**  
D29.949/941/942/  
946/947/991/994/995  
5 Sil. Dizel 2874cc 65-70  
KW(88-95 PS) 22:1  
290 D, 290 GD,  
300 D, 410 D  
1993 - 2000



**Piston Ölçüleri**  
(Piston Dimensions)

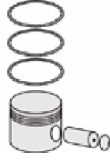
A : 44.630  
B - : 9.010  
C1 : 1.180  
C2 : 1.380  
D : 74.630  
E : 13.000

Pim : 26 x 62



**Piston Özellikleri**  
(Piston Features)

Segman Taşıyıcı  
(Ring Carrier)  
Çelik Plaka  
(Steel Strut)  
Yağ Püskürtme Oyuğu  
(Oil Jet Cut-Out)  
Gözarası Düz  
(Flat Eye Gap)



**Piston Parça No**  
(Piston Part No)

87-743100-82  
87-70457-STD

87-743107-82  
87-70457-050

87-743111-82  
87-70457-100



**Segman Seti**  
(Ring Set)

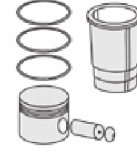
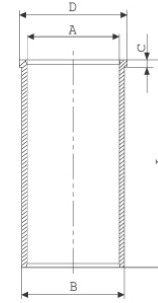
06-743100-00-STD  
06-743107-00-0,50 mm  
06-743111-00-1,00 mm

2.500 CRP KV1  
2.000 P STD  
3.000 CRP GOE

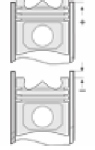


**Silindir Gömleği**  
(Liner)

14-026380-00-D  
B : 91.500  
L : 156.500  
D : 96.550  
C : 4.700



**Silindir Kit**  
(Assembly Set)



**Piston - Blok Montaj**  
Yüksekliği  
(Piston - Block  
Assembly Height)

1,80 mm Conta İle  
(With Gasket)  
+0,84 / +1,06

2,00 mm Conta İle  
(With Gasket)  
+1,03 / +1,26





**Motor Özellikleri**  
(Engine Specifications)

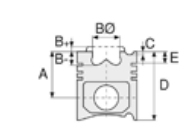
İmalatçı (Manufacturer):  
MERCEDES BENZ PKW  
Çap (Diameter): Ø 89  
FM Grup No: 5831

**OM 602DE**

29LA.980/982/  
983/984/985  
5 Sil. Dizel 2874cc 90/95  
Kw (122/129 PS) 19,5:1  
Turbo 290GD, E290TD,  
Korando 2.9TD,  
Musso 2.9TD,  
Rexton 2.9TD,  
SPRINTER 212D,  
SPRINTER 312D,  
SPRINTER 412D  
1994 - 2000

**OM 602DE**

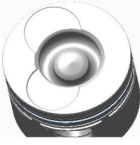
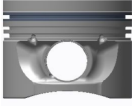
29LA.980/982/  
983/984/985  
5 Sil. Dizel 2874cc 90/95  
Kw (122/129 PS) 19,5:1  
Turbo 290GD, E290TD,  
Korando 2.9TD,  
Musso 2.9TD,  
Rexton 2.9TD,  
SPRINTER 212D,  
SPRINTER 312D,  
SPRINTER 412D  
1994 - 2000



**Piston Ölçüleri**  
(Piston Dimensions)

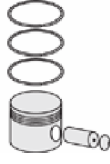
A : 44.750  
B - : 16.730  
BØ : 42.000  
BX : 2.000  
BY : 0.700  
C1 : 0.300  
C2 : 0.600  
D : 71.250  
E : 12.000

Pim : 28 x 70



**Piston Özellikleri**  
(Piston Features)

Segman Taşıyıcı  
(Ring Carrier)  
Soğutma Kanallı  
(Cooling Gallery)  
Yağ Püskürtme Oyuğu  
(Oil Jet Cut-Out)  
Gözarası Düz  
(Flat Eye Gap)



**Piston Parça No**  
(Piston Part No)

87-743100-22  
87-70458-STD  
87-743107-22  
87-70458-050  
87-743111-22  
87-70458-100  
87-743100-23  
87-70458-STD1  
0,20 mm Kısa (Short)



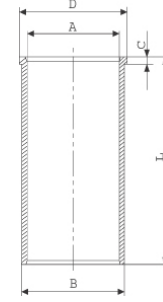
**Segman Seti**  
(Ring Set)

06-743100-00-STD  
06-743107-00-0,50 mm  
06-743111-00-1,00 mm  
2.500 CRP KV1  
2.000 P STD  
3.000 CRP GOE



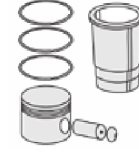
**Silindir Gömleği**  
(Liner)

14-027210-00-D  
B : 91.500  
L : 156.500  
D : 94.050  
C : 4.700

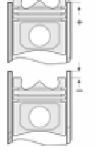


14-027211-00-D  
B : 92.000  
L : 156.500  
D : 94.050  
C : 4.700

Dış Çap 0,50mm Farklı  
(Outside Diameter  
0.50mm Different)



**Silindir Kit**  
(Assembly Set)



**Piston - Blok Montaj**  
Yüksekliği  
(Piston - Block  
Assembly Height)

+ 0,83 / + 1,06





**Motor Özellikleri**  
(Engine Specifications)

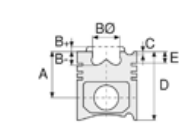
İmalatçı (Manufacturer):  
MERCEDES BENZ PKW  
Çap (Diameter): Ø 89  
FM Grup No: 5826

**M102 E20.962/963/965**

4 Sil. Benzinli 1997cc 80/  
87 Kw (108/118 PS) 9, 1:1  
Enjektörlü (With Injector),  
Katalizörlü (With Catalyst)  
190E, 200E, 200GE  
1984 - 1993

**M102 V20**

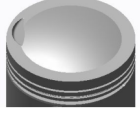
4 Sil. Benzinli 1997cc 77  
Kw (105 PS) 8, 1:1 190, 200  
1989 - 1990



**Piston Ölçüleri**  
(Piston Dimensions)

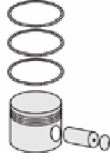
A : 42.380  
B : 3.850  
C1 : 2.530  
D : 74.700  
E : 9.150

Pim : 22 x 56



**Piston Özellikleri**  
(Piston Features)

Çelik Plaka  
(Steel Strut)  
Gözarası Düz  
(Flat Eye Gap)



**Piston Parça No**  
(Piston Part No)

87-179500-22  
87-70464-STD A  
87-179505-22  
87-70464-0,25A

87-179507-22  
87-70464-050A

87-179511-22  
87-70464-100A

87-181400-12  
87-70464-STD B

87-181407-12  
87-70464-050B

87-181411-12  
87-70464 100B



**Segman Seti**  
(Ring Set)

06-179500-00-STD  
06-179505-00-0,25 mm  
06-179507-00-0,50 mm  
06-179511-00-1,00 mm

1.750 CRP KV1  
2.000 P STD  
3.500 CRP STD

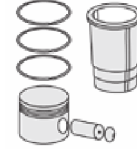
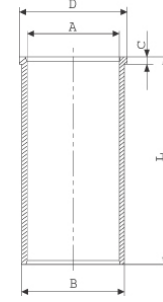
06-181400-90-STD  
06-181407-90-0,50 mm  
06-181411-90-1,00 mm

1.750 CKP KV1  
2.000 P STD  
3.500 CRP STD

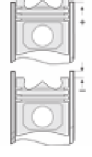


**Silindir Gömleği**  
(Liner)

14-025480-00-D  
B : 92.020  
L : 165.000  
D : 95.050  
C : 4.100

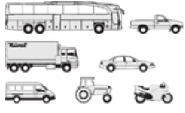


**Silindir Kit**  
(Assembly Set)



**Piston - Blok Montaj**  
Yüksekliği  
(Piston - Block  
Assembly Height)



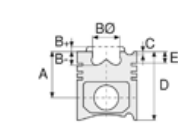


**Motor Özellikleri**  
(Engine Specifications)

İmalatçı (Manufacturer):  
MERCEDES BENZ PKW  
Çap (Diameter): Ø 89  
FM Grup No: 5827

**M102 V20.920/921/961**  
4 Sil. Benzinli 1997cc 66/80  
Kw (90-109 PS) 9:1  
190, 200  
1980 - 1985

**M102 E20.922**  
4 Sil. Benzinli 1997cc 80/90  
Kw (109/122 PS) 9, 1:1  
190E, 200  
1982 - 1983



**Piston Ölçüleri**  
(Piston Dimensions)

A : 43.200  
BØ : 51.000  
C1 : 1.000  
C2 : 2.300  
D : 83.200  
E : 9.400

Pim : 24 x 62



**Piston Özellikleri**  
(Piston Features)

Çelik Plaka  
(Steel Strut)  
Gözarası Düz  
(Flat Eye Gap)



**Piston Parça No**  
(Piston Part No)

87-179500-42  
87-70469-STDA  
87-179507-42  
87-70469-050A  
87-179511-42  
87-70469-100A



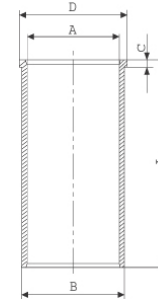
**Segman Seti**  
(Ring Set)

06-179500-00-STD  
06-179505-00-0,25 mm  
06-179507-00-0,50 mm  
06-179511-00-1,00 mm  
1.750 CRP KV1  
2.000 P STD  
3.500 CRP STD

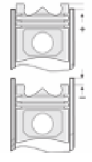


**Silindir Gömleği**  
(Liner)

14-025480-00-D  
B : 92.020  
L : 165.000  
D : 95.050  
C : 4.100



**Silindir Kit**  
(Assembly Set)



**Piston - Blok Montaj**  
Yüksekliği  
(Piston - Block  
Assembly Height)

87-181400-32  
87-70469-STDB  
87-181407-32  
87-70469-050B  
87-181411-32  
87-70469-100B

06-181400-90-STD  
06-181407-90-0,50 mm  
06-181411-90-1,00 mm  
1.750 CKP KV1  
2.000 P STD  
3.500 CRP STD







**Motor Özellikleri**  
(Engine Specifications)

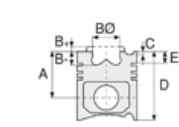
İmalatçı (Manufacturer):  
MERCEDES BENZ PKW  
Çap (Diameter): Ø 89  
FM Grup No: 5828

**M102 V20.920/921/  
924/964**

4 Sil. Benzinli 1997cc 66/80  
Kw (90-109 PS) 9:1  
190, 200  
1983 - 1985

**M102 E20.961/962/  
963/964**

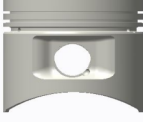
4 Sil. Benzinli 1997cc 80/90  
Kw (109/122 PS) 9, 1:1  
190E, 200E, 200GE  
1984 - 1993



**Piston Ölçüleri**  
(Piston Dimensions)

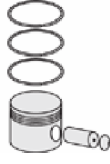
A : 43.200  
C1 : 2.240  
C2 : 1.720  
D : 79.700  
E : 9.400

Pim : 22 x 56



**Piston Özellikleri**  
(Piston Features)

Çelik Plaka  
(Steel Strut)  
Gözarası Düz  
(Flat Eye Gap)



**Piston Parça No**  
(Piston Part No)

87-179500-02  
87-70470-STDA  
87-179507-02  
87-70470-050A  
87-179511-02  
87-70470-100A

87-181400-52  
87-70470-STDB  
87-181407-52  
87-70470-050B  
87-181411-52  
87-70470-100B



**Segman Seti**  
(Ring Set)

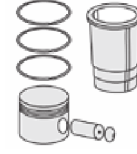
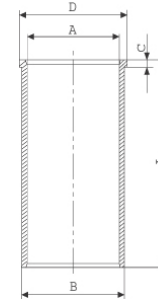
06-179500-00-STD  
06-179505-00-0,25 mm  
06-179507-00-0,50 mm  
06-179511-00-1,00 mm  
1.750 CRP KV1  
2.000 P STD  
3.500 CRP STD

06-181400-90-STD  
06-181407-90-0,50 mm  
06-181411-90-1,00 mm  
1.750 CKP KV1  
2.000 P STD  
3.500 CRP STD

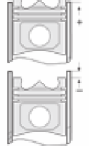


**Silindir Gömleği**  
(Liner)

14-025480-00-D  
B : 92.020  
L : 165.000  
D : 95.050  
C : 4.100

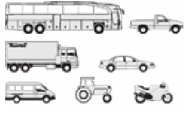


**Silindir Kit**  
(Assembly Set)



**Piston - Blok Montaj**  
Yüksekliği  
(Piston - Block  
Assembly Height)





**Motor Özellikleri**  
(Engine Specifications)

İmalatçı (Manufacturer):  
MERCEDES BENZ PKW  
Çap (Diameter): Ø 89  
FM Grup No: 5829

**OM 601D 23A.970**

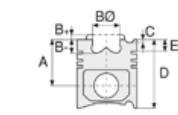
4 Sil. Dizel 2299cc 72  
Kw (98 PS) 22:1  
Turbo Istana 2.3D,  
Korando 2.3D, Musso 2.3D,  
VITO 108D, VITO 110D  
1996 - 1999

**OM 603D 35A.970-972**

6 Sil. Dizel 3449cc 100  
Kw (136 PS) 22:1 Turbo  
350GD, 350S  
1992 - 1997

**OM 601D 23A.970**

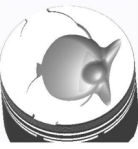
4 Sil. Dizel 2299cc 72  
Kw (98 PS) 22:1 Turbo  
Istana 2.3D, Korando 2.3D,  
Musso 2.3D, VITO 108D,  
VITO 110D  
1996 - 1999



**Piston Ölçüleri**  
(Piston Dimensions)

A : 44.650  
B - : 9.060  
C1 : 1.050  
C2 : 1.250  
D : 74.650  
E : 13.000

Pim : 28 x 70



**Piston Özellikleri**  
(Piston Features)

Segman Taşıyıcı  
(Ring Carrier)  
Sert Anotlama  
(Hard Anodizing)  
Soğutma Kanallı  
(Cooling Gallery)  
Gözarası Düz  
(Flat Eye Gap)



**Piston Parça No**  
(Piston Part No)

87-743100-42  
87-70488-STD

87-743107-42  
87-70488-050

87-743111-42  
87-70488-100

87-743100-43  
87-70488-STD1  
0,20 mm Kısa (Short)



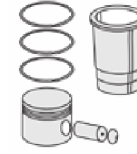
**Segman Seti**  
(Ring Set)

06-743100-00-STD  
06-743107-00-0,50 mm  
06-743111-00-1,00 mm

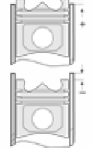
2.500 CRP KV1  
2.000 P STD  
3.000 CRP GOE



**Silindir Gömleği**  
(Liner)



**Silindir Kit**  
(Assembly Set)



**Piston - Blok Montaj**  
Yüksekliği  
(Piston - Block  
Assembly Height)

1,74 mm Conta İle  
(With Gasket)  
+0,83 / +1,06

1,97 mm Conta İle  
(With Gasket)  
+1,03 / +1,26



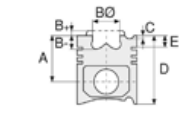


**Motor Özellikleri**  
(Engine Specifications)

İmalatçı (Manufacturer):  
MERCEDES BENZ PKW  
Çap (Diameter): Ø 89  
FM Grup No: 5871

**OM 604 D22 910/  
912/915/917**

4 Sil. Dizel 2155cc 70  
Kw (95 PS) 22.1  
C220 D, E220 D  
1993...



**Piston Ölçüleri**  
(Piston Dimensions)

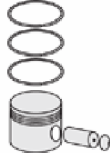
A : 43.550  
B- : 4.550  
BX : 2.500  
C1 : 2.350  
D : 73.550  
E : 11.700

Pim : 26 x 55



**Piston Özellikleri**  
(Piston Features)

Segman Taşıyıcı  
(Ring Carrier)  
Soğutma Kanallı  
(Cooling Gallery)  
Gözarası Düz  
(Flat Eye Gap)



**Piston Parça No**  
(Piston Part No)

87-743100-62  
87-70489-STD  
87-743107-62  
87-70489-050  
87-743111-62  
87-70489-100



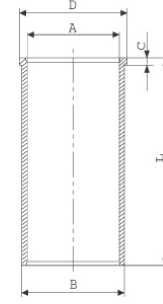
**Segman Seti**  
(Ring Set)

06-743100-00-STD  
06-743107-00-0,50 mm  
06-743111-00-1,00 mm  
2.500 CRP KV1  
2.000 P STD  
3.000 CRP GOE



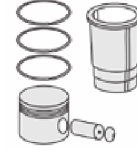
**Silindir Gömleği**  
(Liner)

14-027210-00-D  
B : 91.500  
L : 156.500  
D : 94.050  
C : 4.700

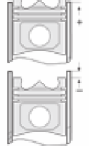


14-027211-00-D  
B : 92.000  
L : 156.500  
D : 94.050  
C : 4.700

Dış Çap 0,50mm Farklı  
(Outside Diameter  
0.50mm Different)



**Silindir Kit**  
(Assembly Set)



**Piston - Blok Montaj**  
Yüksekliği  
(Piston - Block  
Assembly Height)

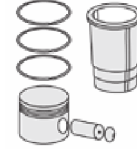
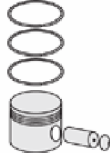
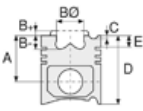
+0,73 / +0,97





MERCEDES BENZ PKW - Ø 89

87-72593-STD



**Motor Özellikleri**  
(Engine Specifications)

İmalatçı (Manufacturer):  
MERCEDES BENZ PKW  
Çap (Diameter): Ø 89  
FM Grup No: 5899

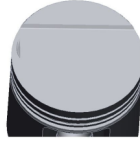
**M 102 V 20.938**  
4 Sil. Benzinli 1997cc  
63-74 Kw(86-100 Ps)  
190, 200  
1982 - 1984

**M 102 V 20.939**  
4 Sil. Benzinli 1997cc 63-74  
Kw(86-100 Ps) 190, 200  
1982 - 1984

**Piston Ölçüleri**  
(Piston Dimensions)

A : 43.200  
B- : 2.050  
C1 : 0.550  
C2 : 2.050  
D : 83.200  
E : 9.450

Pim : 24 x 62



**Piston Özellikleri**  
(Piston Features)

Çelik Plaka  
(Steel Strut)  
Gözarası Düz  
(Flat Eye Gap)

**Piston Parça No**  
(Piston Part No)

87-826200-02  
87-72593-STD  
  
87-826207-02  
87-72593-050  
  
87-826211-02  
87-72593-100

**Segman Seti**  
(Ring Set)

06-826200-00-STD  
06-826207-00-0,50 mm  
06-826211-00-1,00 mm  
  
1.750 CRP KV1  
2.000 P F14  
3.500 CRP STD

**Silindir Gömleği**  
(Liner)

**Silindir Kit**  
(Assembly Set)

**Piston - Blok Montaj**  
Yüksekliği  
(Piston - Block  
Assembly Height)





MERCEDES BENZ PKW - Ø 89

87-72594-STD



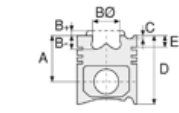
**Motor Özellikleri**  
(Engine Specifications)

İmalatçı (Manufacturer):  
MERCEDES BENZ PKW  
Çap (Diameter): Ø 89  
FM Grup No: 580101

**M 102 E 20.962**  
4 Sil. Benzinli 1997cc  
87 Kw(118 Ps) 190 E, 200 E  
1984...

**M 102 V 20.938**  
4 Sil. Benzinli 1997cc 63-72  
-74 Kw (86-98-100 Ps)  
190, 200  
1983...

**M 102 V 20.939**  
4 Sil. Benzinli 1997cc  
63-72-74 Kw  
(86-98-100 Ps) 190, 200  
1983...



**Piston Ölçüleri**  
(Piston Dimensions)

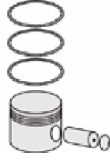
A : 43.200  
B - : 2.000  
D : 79.700  
E : 9.500

Pim : 22 x 56



**Piston Özellikleri**  
(Piston Features)

Çelik Plaka  
(Steel Strut)  
Gözarası Düz  
(Flat Eye Gap)



**Piston Parça No**  
(Piston Part No)

87-826200-22  
87-72594-STD  
87-826207-22  
87-72594-050  
87-826211-22  
87-72594-100

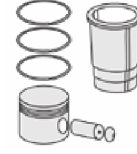


**Segman Seti**  
(Ring Set)

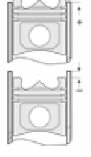
06-826200-00-STD  
06-826207-00-0,50 mm  
06-826211-00-1,00 mm  
1.750 CRP KV1  
2.000 P F14  
3.500 CRP STD



**Silindir Gömleği**  
(Liner)

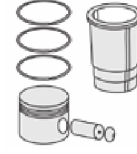
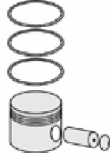
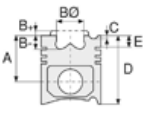


**Silindir Kit**  
(Assembly Set)



**Piston - Blok Montaj**  
Yüksekliği  
(Piston - Block  
Assembly Height)





**Motor Özellikleri**  
(Engine Specifications)

İmalatçı (Manufacturer):  
MERCEDES BENZ PKW  
Çap (Diameter): Ø 89,9  
FM Grup No: 590131

**M112.915/917/912/  
914/916/913**

6 Sil. Benzinli 2799cc  
150KW-240PS C 240,  
CLK240, E280  
1995...

**Piston Ölçüleri**  
(Piston Dimensions)

A : 33.700  
B- : 0.500  
B : 1.400  
C1 : 2.060  
D : 58.700  
E : 5.500

Pim : 22 x 52



**Piston Özellikleri**  
(Piston Features)

Sert Anotlama  
(Hard Anodizing)  
Gözarası Düz  
(Flat Eye Gap)

**Piston Parça No**  
(Piston Part No)

87-119000-02  
87-70443-STD  
  
87-119007-02  
87-70443-0,50

**Segman Seti**  
(Ring Set)

06-119000-50-STD  
06-119007-50-0,50 mm  
  
1.500 NT ST  
1.750 P GOE  
3.000 ST NT

**Silindir Gömleği**  
(Liner)

**Silindir Kit**  
(Assembly Set)

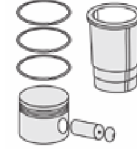
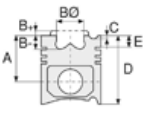
**Piston - Blok Montaj**  
Yüksekliği  
(Piston - Block  
Assembly Height)





MERCEDES BENZ PKW - Ø 89,9

87-70454-STD



**Motor Özellikleri**  
(Engine Specifications)

İmalatçı (Manufacturer):  
MERCEDES BENZ PKW  
Çap (Diameter): Ø 89,9  
FM Grup No: 5832

**M111 E20.940/941/942**

4 Sil. Benzinli 1996cc  
100 Kw (136 PS) 9, 6:1  
Enjektörlü (With Injector),  
Katalizörlü (With Catalyst)  
200CE, 200E, 200TE,  
C200, E200  
1993...

**Piston Ölçüleri**  
(Piston Dimensions)

A : 31.650  
C1 : 1.400  
C2 : 1.900  
D : 55.150  
E : 6.600

Pim : 22 x 56



**Piston Özellikleri**  
(Piston Features)

Gözarası Düz  
(Flat Eye Gap)

**Piston Parça No**  
(Piston Part No)

87-287500-02  
87-70454-STD  
87-287507-02  
87-70454-050  
87-287511-02  
87-70454-100

**Segman Seti**  
(Ring Set)

06-287500-00-STD  
06-287507-00-0,50 mm  
06-287511-00-1,00 mm  
1.500 NT ST  
1.750 P STD  
3.000 CRP STD

**Silindir Gömleği**  
(Liner)

**Silindir Kit**  
(Assembly Set)

**Piston - Blok Montaj**  
Yüksekliği  
(Piston - Block  
Assembly Height)





MERCEDES BENZ PKW - Ø 89,9

87-70455-STD

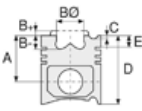


**Motor Özellikleri**  
(Engine Specifications)

İmalatçı (Manufacturer):  
MERCEDES BENZ PKW  
Çap (Diameter): Ø 89,9  
FM Grup No: 5833

**M104**

E32.980/981/990/991  
/992/994/995/996  
6 Sil. Benzinli 3199cc  
155-170 Kw (211-231 PS) 10:1  
Enjektörlü (With Injector),  
Katalizörlü (With Catalyst)  
300 SE, 320 SL,  
Actyon 3.2i 24V,  
Chairman 3.2i 24V,  
Korando 2.3D, Korando 3.2,  
Musso 3.2, Rodius 3.2i 24V,  
S320, Stavic 3.2i 24V  
1991 - 1998



**Piston Ölçüleri**  
(Piston Dimensions)

A : 31.120  
B - : 1.200  
BØ : 74.400  
D : 56.100  
E : 6.700

Pim : 22 x 56



**Piston Özellikleri**  
(Piston Features)

Gözarası Düz  
(Flat Eye Gap)



**Piston Parça No**  
(Piston Part No)

87-287500-22  
87-70455-STD  
87-287507-22  
87-70455-050  
87-287511-22  
87-70455-100

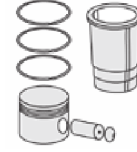


**Segman Seti**  
(Ring Set)

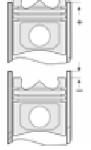
06-287500-00-STD  
06-287507-00-0,50 mm  
06-287511-00-1,00 mm  
1.500 NT ST  
1.750 P STD  
3.000 CRP STD



**Silindir Gömleği**  
(Liner)



**Silindir Kit**  
(Assembly Set)



**Piston - Blok Montaj**  
Yüksekliği  
(Piston - Block  
Assembly Height)







MERCEDES BENZ PKW - Ø 90,9

87-70479-STDB



**Motor Özellikleri**  
(Engine Specifications)

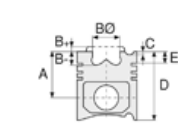
İmalatçı (Manufacturer):  
MERCEDES BENZ PKW  
Çap (Diameter): Ø 90,9  
FM Grup No: 5835

**OM 616.910/912/913/918**  
**/930/940/962/963**

4 Sil. Dizel 2399cc 38/48/53  
Kw (52/65/72 PS) 21:1  
100, 207, 240D, 307,  
407, 507, MB 100,  
O 309, U 600, U 6000  
1978...

**OM 617a.912/913/919/**  
**931/932**

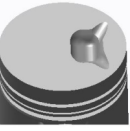
5 Sil. Dizel 2998cc 64,5/66  
Kw (88/90 PS) 21:1  
209, 300 D, 309, 409  
1978 - 1985



**Piston Ölçüleri**  
(Piston Dimensions)

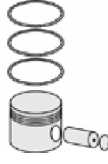
A : 48.350  
B- : 8.750  
C1 : 1.150  
D : 81.850  
E : 14.750

Pim : 26 x 74



**Piston Özellikleri**  
(Piston Features)

Segman Taşıyıcı  
(Ring Carrier)  
Çelik Plaka  
(Steel Strut)  
Gözarası Düz  
(Flat Eye Gap)



**Piston Parça No**  
(Piston Part No)

87-876200-02  
87-70479-STDB

87-876207-02  
87-70479-050B

87-876211-02  
87-70479-100B

87-176700-12  
87-70479-STDC

87-176707-12  
87-70479 050C

87-176711-12  
87-70479 100C



**Segman Seti**  
(Ring Set)

06-876200-00-STD  
06-876207-00-0,50 mm  
06-876211-00-1,00 mm

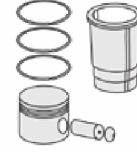
3.000  CRP KV1  
2.000  P STD  
4.000  CRP STD

06-176700-90-STD  
06-176707-90-0,50 mm  
06-176711-90-1,00 mm

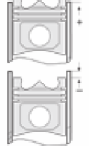
3.000  CKP KV1  
2.000  CKP IKA  
4.000  CRP STD



**Silindir Gömleği**  
(Liner)



**Silindir Kit**  
(Assembly Set)



**Piston - Blok Montaj**  
**Yüksekliği**  
(Piston - Block  
Assembly Height)

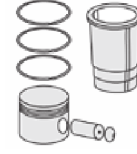
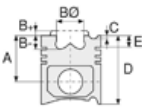
+0,50 / +0,90





MERCEDES BENZ PKW - Ø 90,9

87-72592-STD



**Motor Özellikleri**  
(Engine Specifications)

**Piston Ölçüleri**  
(Piston Dimensions)

**Piston Parça No**  
(Piston Part No)

**Segman Seti**  
(Ring Set)

**Silindir Gömleği**  
(Liner)

**Silindir Kit**  
(Assembly Set)

**Piston - Blok Montaj**  
Yüksekliği  
(Piston - Block  
Assembly Height)

İmalatçı (Manufacturer):  
MERCEDES BENZ PKW  
Çap (Diameter): Ø 90,9  
FM Grup No: 6026

A : 30.000  
B : 2.900  
BØ : 88.000  
C1 : 1.000  
D : 55.000  
E : 5.400

87-109100-02  
87-72592-STD  
  
87-109107-02  
87-72592-0,50

06-109100-00-STD  
06-109107-00-0.50 mm

1.500 NT ST  
1.750 P STD  
3.000 NT ST

**M111.970**  
4 Sil. Benzinli 2295cc  
110 KW ( 250 PS )  
Actyon 2.3i 16V, C230, E230,  
Korando 2.3, Kyron 2.3i 16V,  
ML230, Musso 2.3,  
Rexton 2.3i 16V  
1996...

Pim : 22 x 56



**Piston Özellikleri**  
(Piston Features)

Gözarası Düz  
(Flat Eye Gap)





**Motor Özellikleri**  
(Engine Specifications)

İmalatçı (Manufacturer):  
MERCEDES BENZ PKW  
Çap (Diameter): Ø 91  
FM Grup No: 5836

**OM 616.910/911/916/  
917/918/919**

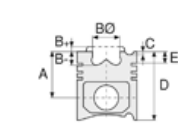
4 Sil. Dizel 2404cc 38/48  
Kw (52/65 PS) 21:1  
207, 307, 309, U 421  
1974 - 1978

**OM 616.912/916/918**

4 Sil. Dizel 2404cc 38/48  
Kw (52/65 PS) 21:1 240D  
1973...

**OM 617.910/912**

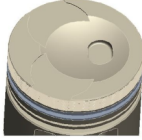
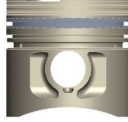
5 Sil. Dizel 3005cc 59  
Kw (80 PS) 21:1 240D 3.0,  
300D  
1974 - 1979



**Piston Ölçüleri**  
(Piston Dimensions)

A : 48.350  
B - : 4.200  
BØ : 60.200  
BX : 5.900  
C1 : 1.050  
D : 81.850  
E : 15.300

Pim : 26 x 74



**Piston Özellikleri**  
(Piston Features)

Segman Taşıyıcı  
(Ring Carrier)  
Çelik Plaka  
(Steel Strut)  
Gözarası Düz  
(Flat Eye Gap)



**Piston Parça No**  
(Piston Part No)

87-876300-02  
87-70480-STD  
  
87-876307-02  
87-70480-050A

87-173800-12  
87-70480-STDB

87-173807-12  
87-70480-050B

87-173811-12  
87-70480-100B



**Segman Seti**  
(Ring Set)

06-876300-00-STD  
06-876307-00-0,50 mm  
06-876311-00-1,00 mm  
  
3.000 CRP KV1  
2.000 P STD  
4.000 CRP STD

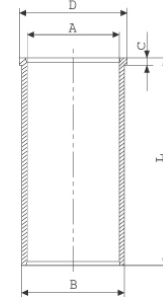
06-173800-90 STD  
06-173807-90 0,50 mm  
06-173811-90 1,00 mm

3.000 CK KV1  
2.000 CKP IKA  
4.000 CRP STD



**Silindir Gömleği**  
(Liner)

14-021350-00-D  
B : 94.000  
L : 158.400  
D : 96.000  
C : 4.700

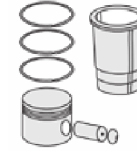


14-021351-00-D  
B : 94.500  
L : 158.400  
D : 96.500  
C : 4.700

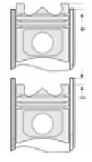
Dış Çap 0,50mm Farklı  
(Outside Diameter  
0.50mm Different)

14-021352-00-D  
B : 95.000  
L : 158.400  
D : 97.000  
C : 4.700

Dış Çap 1,00mm Farklı  
(Outside Diameter  
1.00mm Different)



**Silindir Kit**  
(Assembly Set)



**Piston - Blok Montaj**  
Yüksekliği  
(Piston - Block  
Assembly Height)

+0,50 / +0,90





MERCEDES BENZ PKW - Ø 93,75

87-70482-STDA



**Motor Özellikleri**  
(Engine Specifications)

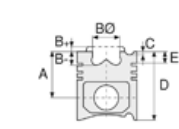
İmalatçı (Manufacturer):  
MERCEDES BENZ PKW  
Çap (Diameter): Ø 93,75  
FM Grup No: 5837

**M 115/970/971/972/973/  
974/952/955**

4 Sil. Benzinli 2307cc 66 Kw  
(90 PS) 9:1 O 309  
1973 - 1982

**M 115**

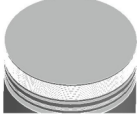
4 Sil. Benzinli 2307cc 78  
Kw (102PS) 9:1 230, 230G  
1973 - 1982



**Piston Ölçüleri**  
(Piston Dimensions)

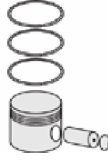
A : 51.800  
D : 82.000  
E : 17.000

Pim : 26 x 73



**Piston Özellikleri**  
(Piston Features)

Çelik Plaka  
(Steel Strut)  
Gözarası Düz  
(Flat Eye Gap)



**Piston Parça No**  
(Piston Part No)

87-178900-12  
87-70482-STDA

87-178906-12  
87-70482-040A

87-178910-12  
87-70482-080A



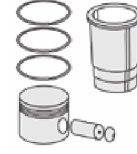
**Segman Seti**  
(Ring Set)

06-178900-90-STD  
06-178906-90-0,40 mm  
06-178910-90-0,80 mm

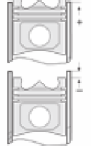
1.750 CKP KVI  
2.500 CKP IKA  
4.000 CRP STD



**Silindir Gömleği**  
(Liner)



**Silindir Kit**  
(Assembly Set)



**Piston - Blok Montaj**  
Yüksekliği  
(Piston - Block  
Assembly Height)





MERCEDES BENZ PKW - Ø 95,5

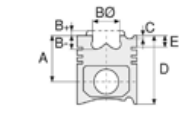
87-70486-STDA



**Motor Özellikleri**  
(Engine Specifications)

İmalatçı (Manufacturer):  
MERCEDES BENZ PKW  
Çap (Diameter): Ø 95,5  
FM Grup No: 5839

**M 102 E23.980/981**  
4 Sil. Benzinli 2299cc  
92 Kw (125 PS) 9:1  
Enjektörlü (With Injector)  
230E, 230GE  
1980 - 1983



**Piston Ölçüleri**  
(Piston Dimensions)

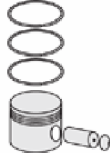
A : 43.200  
B- : 1.850  
BØ : 70.000  
BY : 7.500  
C1 : 1.500  
C2 : 2.300  
D : 83.200  
E : 9.600

Pim : 24 x 62



**Piston Özellikleri**  
(Piston Features)

Çelik Plaka  
(Steel Strut)  
Gözarası Düz  
(Flat Eye Gap)



**Piston Parça No**  
(Piston Part No)

87-179700-12  
87-70486-STDA  
87-179707-12  
87-70486-050A  
87-179711-12  
87-70486-100A



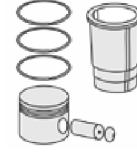
**Segman Seti**  
(Ring Set)

06-179700-90-STD  
06-179707-90-0,50 mm  
06-179711-90-1,00 mm

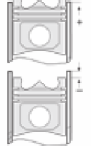
1.750 CKP KVI  
2.000 P F14  
3.500 CRP STD



**Silindir Gömleği**  
(Liner)



**Silindir Kit**  
(Assembly Set)



**Piston - Blok Montaj**  
Yüksekliği  
(Piston - Block  
Assembly Height)

+ 0,50 / + 0,90





MERCEDES BENZ PKW - Ø 95,5

87-70487-STDA



**Motor Özellikleri**  
(Engine Specifications)

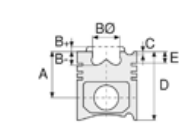
İmalatçı (Manufacturer):  
MERCEDES BENZ PKW  
Çap (Diameter): Ø 95,5  
FM Grup No: 5840

**M 102 E23.980/  
982/985**

4 Sil. Benzinli 2299cc  
97-100 Kw (132/136 PS) 9:1  
Enjektörlü (With Injector),  
Katalizörlü (With Catalyst)  
190 E 2.3, 190E 2.3Lt, 230E  
1982 - 1988

**M 102 E23.981**

4 Sil. Benzinli 2299cc 92  
Kw (125 PS) 9:1  
Enjektörlü (With Injector)  
230GE  
1986 - 1993



**Piston Ölçüleri**  
(Piston Dimensions)

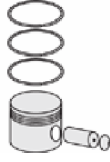
A : 43.200  
B - : 1.850  
BØ : 70.000  
BY : 7.750  
C1 : 3.460  
C2 : 1.750  
D : 78.700  
E : 9.600

Pim : 22 x 56



**Piston Özellikleri**  
(Piston Features)

Çelik Plaka  
(Steel Strut)  
Gözarası Düz  
(Flat Eye Gap)



**Piston Parça No**  
(Piston Part No)

87-179700-32  
87-70487-STDA  
87-179707-32  
87-70487-050A  
87-179711-22  
87-70487-100A



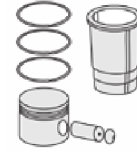
**Segman Seti**  
(Ring Set)

06-179700-90-STD  
06-179707-90-0,50 mm  
06-179711-90-1,00 mm

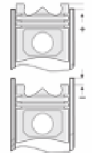
1.750 CKP KV1  
2.000 P F14  
3.500 CRP STD



**Silindir Gömleği**  
(Liner)



**Silindir Kit**  
(Assembly Set)



**Piston - Blok Montaj**  
Yüksekliği  
(Piston - Block  
Assembly Height)





MERCEDES BENZ PKW - Ø 96,5

06-182700-00-STD



**Motor Özellikleri**  
(Engine Specifications)

İmalatçı (Manufacturer):  
MERCEDES BENZ PKW  
Çap (Diameter): Ø 96,5  
FM Grup No: 5841

**M 117.960-965**

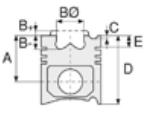
8 Sil. Benzinli 4973cc  
138/195 Kw (187 PS)  
450 SLC, 50 GE 4X4,  
500 SE,SL,SLC, 500 SEC,  
500 SEL  
1978 - 1981

**M 119.960/970/972/  
974/975/980/982/985**

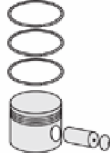
8 Sil. Benzinli 4973cc  
235/240 Kw (320 PS)  
500 E, 500 SE,SL,  
500 SEC, 500 SL, E500  
1991 - 1993

**M 117.967/968**

8 Sil. Benzinli 5544cc  
178/220 Kw (242 PS)  
560 SE,SEL, 560 SEC  
1985...



**Piston Ölçüleri**  
(Piston Dimensions)



**Piston Parça No**  
(Piston Part No)



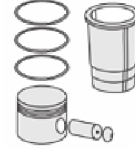
**Segman Seti**  
(Ring Set)

06-182700-00-STD  
06-182707-00-0,50 mm  
06-182711-00-1,00 mm

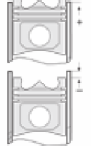
1.750 CRP KV1  
2.000 CRP KV1  
3.500 CRP STD



**Silindir Gömleği**  
(Liner)



**Silindir Kit**  
(Assembly Set)



**Piston - Blok Montaj**  
Yüksekliği  
(Piston - Block  
Assembly Height)

