



MWM - Ø 105

87-71635-STD



Motor Özellikleri
(Engine Specifications)

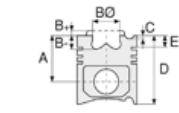
İmalatçı (Manufacturer):
MWM
Çap (Diameter): Ø 105
FM Grup No: 6405

D 226 Z
2 Sil. Dizel 2080cc
29,5 Kw (40 PS) 18:1
ENDUSTRIYEL
(Industrial)
1969 - 1977

D 226 D
3 Sil. Dizel 3120cc 44
Kw (60 PS) 18:1
ENDUSTRIYEL
(Industrial)
1969 - 1977

D 226 V
4 Sil. Dizel 4160cc 59
Kw (80 PS) 18:1
ENDUSTRIYEL
(Industrial)
1969 - 1977

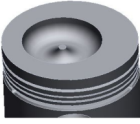
D 226 S
6 Sil. Dizel 6240cc 88,8
Kw (120 PS) 18:1
RVI Renault Truck
ile ortak motor
(With Renault Truck
Common Engine)
ENDUSTRIYEL
(Industrial)
1969 - 1977



Piston Ölçüleri
(Piston Dimensions)

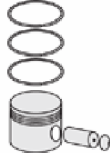
A : 59.800
B- : 19.500
BØ : 62.000
BX : 6.000
D : 112.800
E : 12.800

Pim : 32 x 82



Piston Özellikleri
(Piston Features)

Çelik Plaka
(Steel Strut)
Gözarası Düz
(Flat Eye Gap)



Piston Parça No
(Piston Part No)

87-279600-02
87-71635-STD



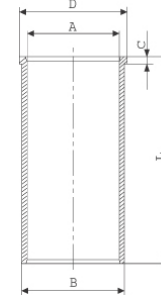
Segman Seti
(Ring Set)

06-279600-00-STD
3.000 CRP İKA
2.000 P STD
2.000 P STD
4.000 CRP STD

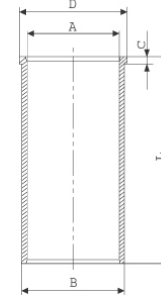


Silindir Gömleği
(Liner)

14-020170-01-DH
B : 108.000
L : 214.000
D : 111.800
C : 6.000

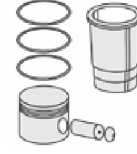


14-021630-00-D
B : 108.000
L : 214.000
D : 112.000
C : 6.000

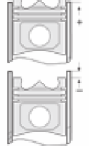


14-021632-00-D
B : 108.555
L : 214.000
D : 112.500
C : 6.000

Dış Çap 0,50mm Farklı
(Outside Diameter
0.50mm Different)



Silindir Kit
(Assembly Set)



Piston - Blok Montaj
Yüksekliği
(Piston - Block
Assembly Height)

- 0,28 / - 0,60





MWM - Ø 105

87-71636-STD



Motor Özellikleri
(Engine Specifications)

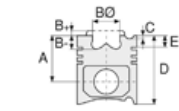
İmalatçı (Manufacturer):
MWM
Çap (Diameter): Ø 105
FM Grup No: 6406

D 226 Z
2 Sil. Dizel 2080cc
27/30 Kw (37/41 PS) 18:1
ENDUSTRIYEL
1978...

D 226 D
3 Sil. Dizel 3120cc
44/48 Kw (60/65 PS) 18:1
ENDUSTRIYEL
1978...

D 226 V
4 Sil. Dizel 4160cc
59/64 Kw (80/87 PS) 18:1
ENDUSTRIYEL
1978...

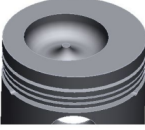
D 226 S
6 Sil. Dizel 6240cc 74/96
Kw (100/131 PS) 18:1
ENDUSTRIYEL
1978...



Piston Ölçüleri
(Piston Dimensions)

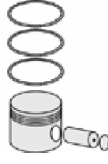
A : 60.400
B- : 20.000
BØ : 62.000
BX : 6.000
D : 113.400
E : 13.400

Pim : 35 x 82



Piston Özellikleri
(Piston Features)

Çelik Plaka
(Steel Strut)
Gözarası Düz
(Flat Eye Gap)



Piston Parça No
(Piston Part No)

87-279600-22
87-71636-STD



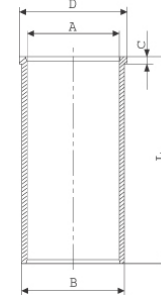
Segman Seti
(Ring Set)

06-279600-00 STD
3.000 CRP İKA
2.000 P STD
2.000 P STD
4.000 CRP STD

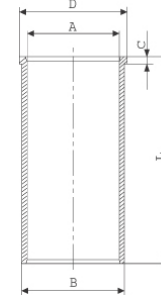


Silindir Gömleği
(Liner)

14-020170-01-DH
B : 108.000
L : 214.000
D : 111.800
C : 6.000

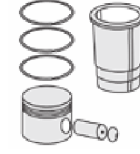


14-021630-00-D
B : 108.000
L : 214.000
D : 112.000
C : 6.000



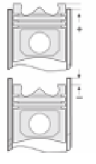
14-021632-00-D
B : 108.555
L : 214.000
D : 112.500
C : 6.000

Dış Çap 0,50mm Farklı
(Outside Diameter
0.50mm Different)



Silindir Kit
(Assembly Set)

88-279600-22-STD
88-71636-STD



Piston - Blok Montaj
Yüksekliği
(Piston - Block
Assembly Height)

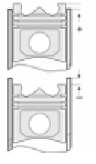
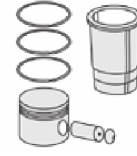
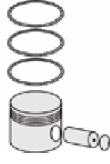
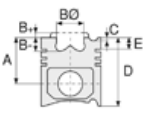
- 0,28 / - 0,60





MWM - Ø 95

87-71632-STD



Motor Özellikleri
(Engine Specifications)

Piston Ölçüleri
(Piston Dimensions)

Piston Parça No
(Piston Part No)

Segman Seti
(Ring Set)

Silindir Gömleği
(Liner)

Silindir Kit
(Assembly Set)

Piston - Blok Montaj
Yüksekliği
(Piston - Block
Assembly Height)

İmalatçı (Manufacturer):
MWM
Çap (Diameter): Ø 95
FM Grup No: 6403

A : 60.000
B- : 20.750
BØ : 49.500
BX : 6.000
D : 113.000
E : 13.000

87-278000-02
87-71632-STD
87-278007-02
87-71632-0,50
87-278011-02
87-71632-100

06-278000-00-STD
06-278007-00-0,50 mm
06-278011-00-1,00 mm
3.000 CRP STD
3.000 P STD
3.000 STD
5.000 CR STD

14-448160-00-WH
B : 105.910
L : 211.000
D : 114.000
C : 8.070

88-278000-02-STD
88-71632-STD

-0,23 / -0,55

D 208 Z

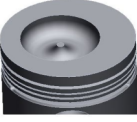
2 Sil. Dizel 1490cc
23 Kw (31 PS) 16, 7:1
Su Soğutmalı
(Water Cooled)
ENDUSTRIYEL
(Industrial)
1965 - 1973

Pim : 32 x 82



D 208 D

3 Sil. Dizel 2550cc 34
Kw (46,5 PS) 16, 7:1
Su Soğutmalı
(Water Cooled)
ENDUSTRIYEL
(Industrial)
1965 - 1973



Piston Özellikleri
(Piston Features)

Çelik Plaka
(Steel Strut)
Gözarası Düz
(Flat Eye Gap)

D 208 V

4 Sil. Dizel 3080cc 45,5
Kw (62 PS) 16, 7:1
Su Soğutmalı
(Water Cooled)
ENDUSTRIYEL
(Industrial)
1965 - 1973

D 208 S

6 Sil. Dizel 4470cc 68,5
Kw (93 PS) 16, 7:1
Su Soğutmalı
(Water Cooled)
ENDUSTRIYEL
(Industrial)
1965 - 1973

