



PERKINS LKW - Ø 98,48

87-71735-STD



Motor Özellikleri
(Engine Specifications)

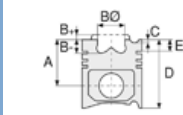
İmalatçı (Manufacturer):
PERKINS LKW
Çap (Diameter): Ø 98,48
FM Grup No: 6909

AD 4.236

4 Sil. Dizel 3864cc
48/60 Kw (59/80 PS) 16:1
3 Yuva Segmanlı (3 Slot
Segmented)
MF 275, TRAKTOR VOLVO
1961....

D 39 C

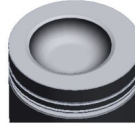
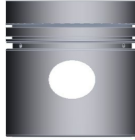
4 Sil. Dizel 3864cc
48/60 Kw (59/80 PS) 16:1
3 Yuva Segmanlı (3 Slot
Segmented)
D 350 KAMYONET
1961....



Piston Ölçüleri
(Piston Dimensions)

A : 70.440
B - : 20.590
BØ : 61.000
BX : 3.180
D : 121.240
E : 21.540

Pim: 34,925 x 84,1



Piston Özellikleri
(Piston Features)

Segman Taşıyıcı
(Ring Carrier)
Çelik Plaka
(Steel Strut)
Gözarası Düz
(Flat Eye Gap)



Piston Parça No
(Piston Part No)

87-318900-22
87-71738-STD
87-318900-23
87-71738-STD1
0,29 mm Kısa (Short)



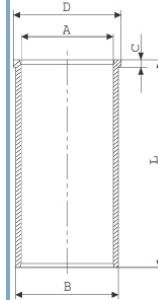
Segman Seti
(Ring Set)

06-318900-10-STD
2.385 CRP KVI
2.385 P STD
4.747 CRP STD



Silindir Gömleği
(Liner)

14-021980-00 D
B : 104.280
L : 226.440
D : 107.380
C : 3.800

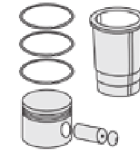


14-021981-00 D
B : 104.780
L : 226.440
D : 107.400
C : 4.000

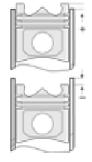
Dış Çap 0,50 mm. farklı
(Outer Diameter
0,50 mm Different)

14-021982-00 D
B : 105.280
L : 226.440
D : 107.420
C : 4.250

Dış Çap 1,00 mm. farklı
(Outer Diameter
1,00 mm Different)



Silindir Kit
(Assembly Set)

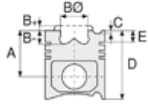


Piston - Blok Montaj
Yüksekliği
(Piston - Block
Assembly Height)

+ 0,28 / + 0,48



Motor Özellikleri
(Engine Specifications)



Piston Ölçüleri
(Piston Dimensions)



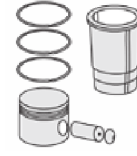
Piston Parça No
(Piston Part No)



Segman Seti
(Ring Set)



Silindir Gömleği
(Liner)

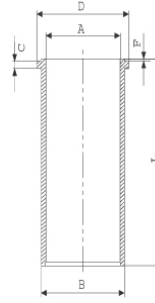


Silindir Kit
(Assembly Set)



Piston - Blok Montaj
Yüksekliği
(Piston - Block
Assembly Height)

14-045820-10 D
B : 103.330
L : 227.280
D : 106.420
C : 3.800
F : 0.900



14-045821-10 D
B : 103.830
L : 227.280
D : 106.920
C : 4.300
F : 0.900

Dış Çap 0,50mm Farklı
(Outer Diameter
0,50 mm Different)

14-045822-10 D
B : 104.330
L : 227.280
D : 107.420
C : 4.800
F : 0.900

Dış Çap 1,00mm Farklı
(Outer Diameter
1,00 mm Different)

14-045823-10 D
B : 104.830
L : 227.280
D : 107.920
C : 5.300
F : 0.900

Dış Çap 1,50 mm farklı
(Outer Diameter
1,50 mm Different)





PERKINS LKW - Ø 98,48

87-71758-STD



Motor Özellikleri
(Engine Specifications)

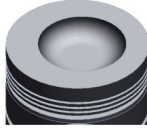
İmalatçı (Manufacturer):
PERKINS LKW
Çap (Diameter): Ø 98,48
FM Grup No: 7035

4.236
4 Sil. Dizel 3866cc 16:1
Direk Enjeksiyon
Endüstriyel (Direct
Injection Industrial)

Piston Ölçüleri
(Piston Dimensions)

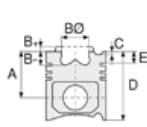
A : 70.220
B- : 20.380
BØ : 61.000
BX : 3.180
D : 121.021
E : 21.010

Pim: 34,925 x 84,1



Piston Özellikleri
(Piston Features)

Gözarası Konik
(Conical Eye Gap)



Piston Parça No
(Piston Part No)

87-107200-02
87-71758-STD



Segman Seti
(Ring Set)

06-107200-00-STD

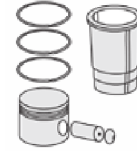
2.385 CRP STD
2.385 P STD
2.385 P STD
6.335 CRP STD
6.335 P STD



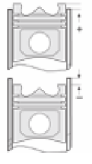
Silindir Gömleği
(Liner)



Silindir Kit
(Assembly Set)



Piston - Blok Montaj
Yüksekliği
(Piston - Block
Assembly Height)





PERKINS LKW - Ø 98,48

87-73563-STD



Motor Özellikleri
(Engine Specifications)

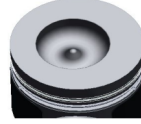
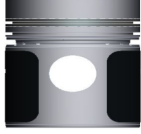
İmalatçı (Manufacturer):
PERKINS LKW
Çap (Diameter): Ø 98,48
FM Grup No: 7034

6.354.4
6 Sil. Dizel 5800cc 16:1
Endüstriyel (Industrial)

Piston Ölçüleri
(Piston Dimensions)

A : 70.020
B- : 25.600
BØ : 54.100
BX : 3.180
D : 120.840
E : 20.830

Pim: 34,925 x 84,125

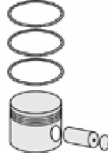


Piston Özellikleri
(Piston Features)

Segman Taşıyıcı
(Ring Carrier)
Çelik Plaka
(Steel Strut)
Gözarası Konik
(Conical Eye Gap)

Piston Parça No
(Piston Part No)

87-318900-42
87-73563-STD



Segman Seti
(Ring Set)

06-318900-10-STD

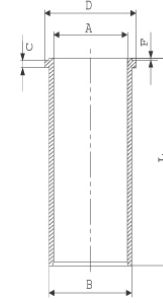
2.385 CRP KV1
2.385 P STD
4.747 CRP STD



Silindir Gömleği
(Liner)

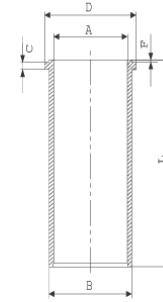
14-040110-00-D

B : 103.240
L : 227.280
D : 106.230
C : 3.860
F : 0.889

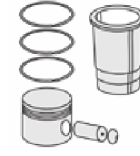


14-040200-00-DH

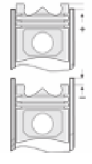
B : 103.190
L : 227.280
D : 106.450
C : 3.860
F : 0.889



Silindir Kit
(Assembly Set)



Piston - Blok Montaj
Yüksekliği
(Piston - Block
Assembly Height)



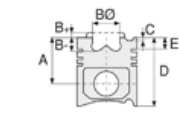


Motor Özellikleri
(Engine Specifications)

İmalatçı (Manufacturer):
PERKINS LKW
Çap (Diameter): Ø 100
FM Grup No: 6925

1004-4T PHASER

4 Sil. Dizel 3990cc
82/88 Kw (112/120 PS)
Turbocharge
JCB İş Makinası (JCB
Construction Machinery)
1997....



Piston Ölçüleri
(Piston Dimensions)

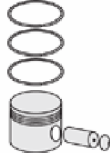
A : 70.160
B- : 19.480
BØ : 55.800
BX : 3.200
D : 108.060
E : 9.860

Pim: 38,1 x 82,8



Piston Özellikleri
(Piston Features)

Segman Taşıyıcı
(Ring Carrier)
Çelik Plaka
(Steel Strut)
Gözarası Konik
(Conical Eye Gap)



Piston Parça No
(Piston Part No)

87-884900-33
87-71718-STD1A
0,14 mm Kısa (Short)
87-884900-32
87-71718-STD A



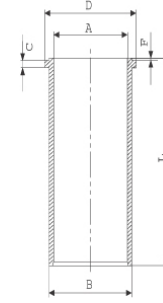
Segman Seti
(Ring Set)

06-884900-90-STD
3.500 KV1
2.500 F14
4.000 STD



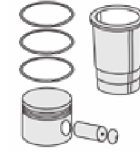
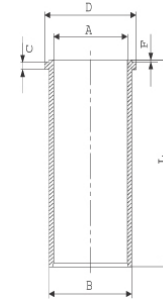
Silindir Gömleği
(Liner)

14-040110-00-D
B : 103.240
L : 227.280
D : 106.230
C : 3.860
F : 0.889

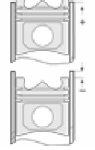


14-040200-00-DH

B : 103.190
L : 227.280
D : 106.450
C : 3.860
F : 0.889



Silindir Kit
(Assembly Set)



Piston - Blok Montaj
Yüksekliği
(Piston - Block
Assembly Height)

+0,25 /+0,40



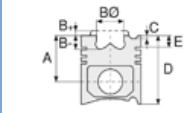


Motor Özellikleri
(Engine Specifications)

İmalatçı (Manufacturer):
PERKINS LKW
Çap (Diameter): Ø 100
FM Grup No: 6916

D 235 PHASER
160/180 T

6 Sil. Dizel 6000cc
118/132 Kw (160/180 PS)
16:1
Turbocharge
KAMYON PD 900 AS,
SUPER PD 900 AS



Piston Ölçüleri
(Piston Dimensions)

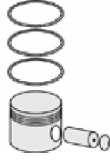
A : 70.160
B- : 19.480
BØ : 55.800
BX : 3.200
D : 108.060
E : 9.860

Pim: 38,1 x 82,8



Piston Özellikleri
(Piston Features)

Segman Taşıyıcı
(Ring Carrier)
Çelik Plaka
(Steel Strut)
Sert Anotlama
(Hard Anodizing)
Gözarası Konik
(Conical Eye Gap)



Piston Parça No
(Piston Part No)

87-883300-13
87-71745-STD1A
0,15 mm Kısa (Short)
87-883300-14
87-71745-STD2A
0,30 mm Kısa (Short)

87-883300-12
87-71745-STD A



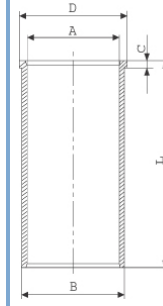
Segman Seti
(Ring Set)

06-883300-90-STD
3.500 CKP KV1
2.500 IKA
4.000 CRP STD
Goetze® LKZ-Ring®



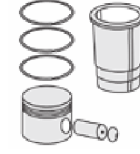
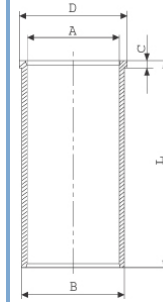
Silindir Gömleği
(Liner)

14-025380-00-DH
B : 104.200
L : 226.500
D : 107.400
C : 3.850

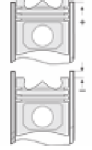


14-026751-00-D

B : 104.700
L : 226.500
D : 107.400
C : 4.000



Silindir Kit
(Assembly Set)



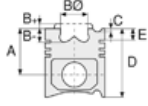
Piston - Blok Montaj
Yüksekliği
(Piston - Block
Assembly Height)

+0,25 /+0,40





Motor Özellikleri
(Engine Specifications)



Piston Ölçüleri
(Piston Dimensions)



Piston Parça No
(Piston Part No)



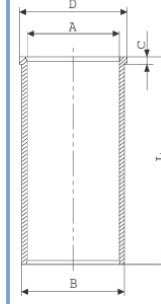
Segman Seti
(Ring Set)



Silindir Gömleği
(Liner)

14-027850-00-D

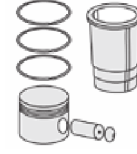
B : 104.255
L : 227.400
D : 107.700
C : 4.000



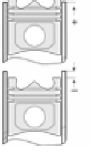
14-027851-10-D

B : 105.255
L : 227.400
D : 107.700
C : 4.000

Dış Çap 1,00mm Farklı
(Outer Diameter
1,00 mm Different)



Silindir Kit
(Assembly Set)



Piston - Blok Montaj
Yüksekliği
(Piston - Block
Assembly Height)





Motor Özellikleri
(Engine Specifications)

İmalatçı (Manufacturer):
PERKINS LKW
Çap (Diameter): Ø 100
FM Grup No: 6918

PHASER 200 Ti
6 Sil. Dizel 6000cc
148 Kw (201 PS)
Turbocharge
AS 26-200

Piston Ölçüleri
(Piston Dimensions)

A : 70.391
B- : 20.750
BØ : 52.800
BX : 3.200
D : 108.230
E : 10.300

Pim: 39,7 x 78,2



Piston Özellikleri
(Piston Features)

Segman Taşıyıcı
(Ring Carrier)
Gözarası Konik
(Conical Eye Gap)

Piston Parça No
(Piston Part No)

87-325600-13
87-71750-STD1C
0.05 mm Kısa (Short)
87-325600-14
87-71750-STD2C
0.09 mm Kısa (Short)

87-325600-22
87-71750-STD3C
0.14 mm Kısa (Short)

87-325600-23
87-71750-STD4C
0.18 mm Kısa (Short)

87-325600-24
87-71750-STD5C
0.23 mm Kısa (Short)

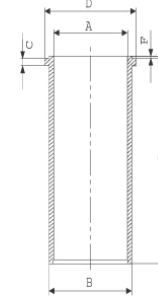
87-325600-12
87-71750-STDC

Segman Seti
(Ring Set)

06-325600-90-STD
3.500 CKP KV1
2.500 P GOE
4.000 CRP STD
Goetze® LKZ-Ring®

Silindir Gömleği
(Liner)

14-049300-00-D
B : 104.280
L : 227.560
D : 107.442
C : 3.860
F : 0.940



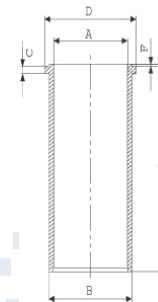
14-049301-10-D

B : 104.780
L : 227.560
D : 108.000
C : 4.250
F : 0.940

Dış Çap 0,50mm Farklı
(Outer Diameter
0,25 mm Different)

14-049310-00-DH

B : 104.200
L : 227.300
D : 107.440
C : 3.860
F : 1.000



Silindir Kit
(Assembly Set)

14-049300-00-D
B : 104.280
L : 227.560
D : 107.442
C : 3.860
F : 0.940

Piston - Blok Montaj
Yüksekliği
(Piston - Block
Assembly Height)

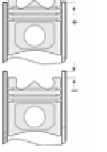
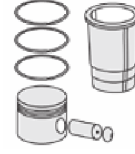
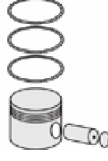
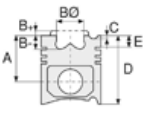
+ 0,382 / + 0,504





PERKINS LKW - Ø 100

87-71756-STD



Motor Özellikleri
(Engine Specifications)

İmalatçı (Manufacturer):
PERKINS LKW
Çap (Diameter): Ø 100
FM Grup No: 6919

1004-4 PHASER 90
4 Sil. Dizel 3990cc 16,5:1
250 AS

1006-6 PHASER 125
6 Sil. Dizel 5985cc 16,5:1
250 AS SUPER

Piston Ölçüleri
(Piston Dimensions)

A : 70.000
B- : 20.140
BØ : 51.880
BX : 3.200
D : 108.000
E : 10.000

Pim: 34,925 x 84,1



Piston Özellikleri
(Piston Features)

Segman Taşıyıcı
(Ring Carrier)
Çelik Plaka
(Steel Strut)
Gözarası Konik
(Conical Eye Gap)

Piston Parça No
(Piston Part No)

87-101700-02
87-71756-STD

Segman Seti
(Ring Set)

06-101700-90-STD

2.500 CKP KV1
2.500 P STD
4.000 CRP STD

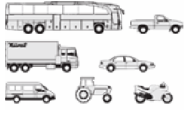
Silindir Gömleği
(Liner)

Silindir Kit
(Assembly Set)

Piston - Blok Montaj
Yüksekliği
(Piston - Block
Assembly Height)

+0,14/+0,36





Motor Özellikleri
(Engine Specifications)

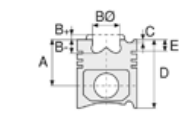
İmalatçı (Manufacturer):
PERKINS LKW
Çap (Diameter): Ø 100
FM Grup No: 6920

1004-4T PHASER 110
4 Sil. Dizel 3990cc 16:1
Turbocharge
T 4.40

1004-4TW PHASER
120 Ti
4 Sil. Dizel 3990cc 16:1
Turbocharged Intercooled
C 4.40

1006-6T PHASER
160 T
6 Sil. Dizel 5985cc 16:1
Turbocharge
1006-6T
1989....

1006-6TW PHASER
180 Ti
6 Sil. Dizel 5985cc 16:1
Turbocharged Intercooled
CC6.60



Piston Ölçüleri
(Piston Dimensions)

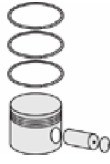
A : 70.000
B- : 20.140
BØ : 51.880
BX : 3.200
D : 108.000
E : 9.975

Pim: 38,1 x 82,8



Piston Özellikleri
(Piston Features)

Segman Taşıyıcı
(Ring Carrier)
Çelik Plaka
(Steel Strut)
Sert Anotlama
(Hard Anodizing)
Gözarası Konik
(Conical Eye Gap)



Piston Parça No
(Piston Part No)

87-325600-42
87-71757-STD A



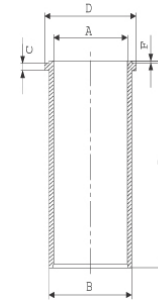
Segman Seti
(Ring Set)

06-325600-90-STD
3.500 CKP KV1
2.500 P GOE
4.000 CRP STD
Goetze® LKZ-Ring®



Silindir Gömleği
(Liner)

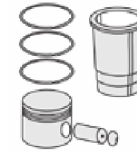
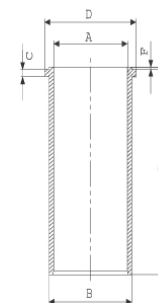
14-049300-00-D
B : 104.280
L : 227.560
D : 107.442
C : 3.860
F : 0.940



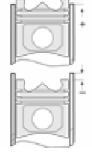
14-049301-10-D
B : 104.780
L : 227.560
D : 108.000
C : 4.250
F : 0.940

Dış Çap 0,50mm Farklı
(Outer Diameter
0,25 mm Different)

14-049310-00-DH
B : 104.200
L : 227.300
D : 107.440
C : 3.860
F : 1.000



Silindir Kit
(Assembly Set)



Piston - Blok Montaj
Yüksekliği
(Piston - Block
Assembly Height)

+0,14/+0,36

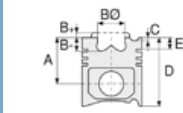




Motor Özellikleri
(Engine Specifications)

İmalatçı (Manufacturer):
PERKINS LKW
Çap (Diameter): Ø 100
FM Grup No: 6917

BH 509 PHASER 90
6 Sil. Dizel 4000cc 65
Kw (89 PS)
PD 250 AS, PD 250
AS SUPER, PW 250 (4X4)



Piston Ölçüleri
(Piston Dimensions)

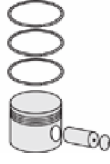
A : 70.140
B- : 20.140
BØ : 55.300
BX : 3.200
D : 108.140
E : 10.140

Pim: 34,925 x 84,1



Piston Özellikleri
(Piston Features)

Segman Taşıyıcı
(Ring Carrier)
Çelik Plaka
(Steel Strut)
Gözarası Konik
(Conical Eye Gap)



Piston Parça No
(Piston Part No)

87-880600-33
87-73546-STD1A
0.14 mm Kısa (Short)
87-880600-34
87-73546-STD2A
0.30 mm Kısa (Short)
87-880600-32
87-73546-STD A



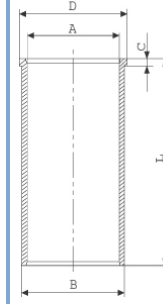
Segman Seti
(Ring Set)

06-880600-90-STD
2.500 CKP KVI
2.500 P IKA
4.000 CRP STD
Goetze® LKZ-Ring®



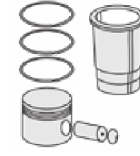
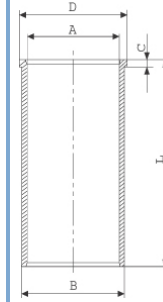
Silindir Gömleği
(Liner)

14-025380-00-DH
B : 104.200
L : 226.500
D : 107.400
C : 3.850

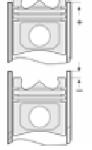


14-026751-00-D

B : 104.700
L : 226.500
D : 107.400
C : 4.000



Silindir Kit
(Assembly Set)



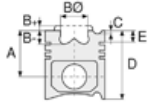
Piston - Blok Montaj
Yüksekliği
(Piston - Block
Assembly Height)

+ 0,135 / + 0,363

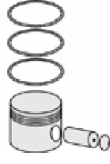




Motor Özellikleri
(Engine Specifications)



Piston Ölçüleri
(Piston Dimensions)



Piston Parça No
(Piston Part No)



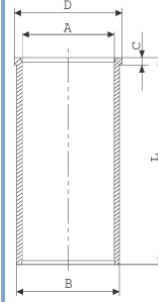
Segman Seti
(Ring Set)



Silindir Gömleği
(Liner)

14-027850-00-D

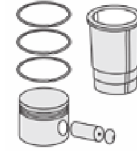
B : 104.255
L : 227.400
D : 107.700
C : 4.000



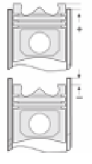
14-027851-10-D

B : 105.255
L : 227.400
D : 107.700
C : 4.000

Dış Çap 1,00mm Farklı
(Outer Diameter
1,00 mm Different)



Silindir Kit
(Assembly Set)



Piston - Blok Montaj
Yüksekliği
(Piston - Block
Assembly Height)





PERKINS LKW - Ø 105

87-73270-STD



Motor Özellikleri
(Engine Specifications)

İmalatçı (Manufacturer):
PERKINS LKW
Çap (Diameter): Ø 105
FM Grup No: 7042

1104D-E44T /
1106D-E66TA

6 Sil. Dizel
6598cc 66-205KW/
90-279PS
ENDUSTRIYEL,
İŞ MAKINASI, Jeneratör
(Industrial,
Working Machine,
Generator)

Piston Ölçüleri
(Piston Dimensions)

A : 70.000
B- : 15.700
BØ : 76.600
D : 108.000
E : 8.000

Pim: 39 x 86



Piston Özellikleri
(Piston Features)

Segman Taşıyıcı
(Ring Carrier)
Yağ Püskürtme Oyuğu
(Oil Jet Cut-out)
Gözarası Konik
(Conical Eye Gap)



Piston Parça No
(Piston Part No)

87-881700-22
87-73270-STD



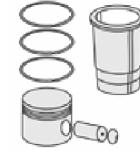
Segman Seti
(Ring Set)

06-881700-00-STD

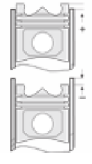
3.000 CKS KVI
2.500 P GOE
3.000 CR GOE



Silindir Gömleği
(Liner)



Silindir Kit
(Assembly Set)



Piston - Blok Montaj
Yüksekliği
(Piston - Block
Assembly Height)





PERKINS LKW - Ø 105

87-73271-STD



Motor Özellikleri
(Engine Specifications)

İmalatçı (Manufacturer):
PERKINS LKW
Çap (Diameter): Ø 105
FM Grup No: 7043

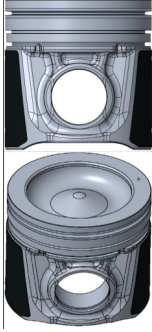
1104D -1106 EURO 3

4 Sil. Dizel 4399cc
54-56 kw/74-75Ps 16.2
ENDUSTRIYEL,
İŞ MAKINASI, Sabit Motor
(Industrial,
Construction Machine,
Fixed Engine)
2014...

Piston Ölçüleri
(Piston Dimensions)

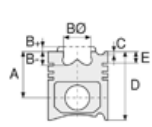
A : 70.200
B- : 15.700
BØ : 76.750
D : 108.200
E : 8.200

Pim: 39,7 x 86



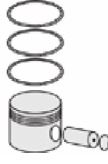
Piston Özellikleri
(Piston Features)

Segman Taşıyıcı
(Ring Carrier)
Gözarası Konik
(Conical Eye Gap)






Piston Parça No
(Piston Part No)

87-881700-42
87-73271-STD



Segman Seti
(Ring Set)

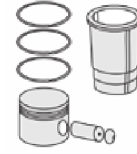
06-881700-00-STD
3.000  CKS KV1
2.500  P GOE
3.000  CR GOE



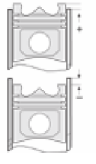
Silindir Gömleği
(Liner)



Silindir Kit
(Assembly Set)



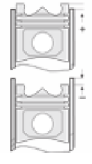
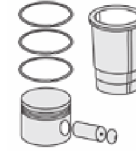
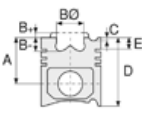
Piston - Blok Montaj
Yüksekliği
(Piston - Block
Assembly Height)





PERKINS LKW - Ø 105

87-73272-STD



Motor Özellikleri
(Engine Specifications)

Piston Ölçüleri
(Piston Dimensions)

Piston Parça No
(Piston Part No)

Segman Seti
(Ring Set)

Silindir Gömleği
(Liner)

Silindir Kit
(Assembly Set)

Piston - Blok Montaj
Yüksekliği
(Piston - Block
Assembly Height)

İmalatçı (Manufacturer):
PERKINS LKW
Çap (Diameter): Ø 105
FM Grup No: 7041

A : 70.100
B- : 22.000
BØ : 52.100
BX : 2.500
BY : 1.500
D : 108.000
E : 10.200

87-881700-62
87-73272-STD

06-881700-00 STD

3.000  CKS KV1
2.500  P GOE
3.000  CR GOE

Pim: 39 x 78



Piston Özellikleri
(Piston Features)

Segman Taşıyıcı
(Ring Carrier)
Yağ Püskürtme Oyuğu
(Oil Jet Cut-out)
Gözarası Konik
(Conical Eye Gap)





PERKINS LKW - Ø 84

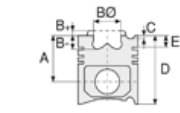
87-73255-STD



Motor Özellikleri
(Engine Specifications)

İmalatçı (Manufacturer):
PERKINS LKW
Çap (Diameter): Ø 84
FM Grup No: 7044

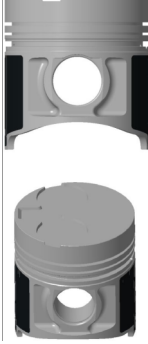
GN-404D-22 /
GS-403D-17 /
GV / HM /
HP-404C-22 /
KR-104-22 /
4 Sil. Dizel
18-34 kWm 23.3:1
Forklift, İŞ MAKINASI,
Jeneratör, Marin,
Yol Süpürge Aracı
(Forklift, Construction
Machine, Generator,
Marine, Road Sweeper)



Piston Ölçüleri
(Piston Dimensions)

A : 48.000
C1 : 1.900
C2 : 2.000
D : 87.700
E : 14.000

Pim: 28 x 71,9



Piston Özellikleri
(Piston Features)

Gözarası Konik
(Conical Eye Gap)



Piston Parça No
(Piston Part No)

87-894800-02
87-73255-STD

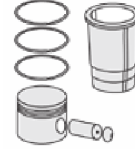


Segman Seti
(Ring Set)

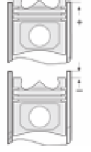
06-894800-00 STD
2.000 NT ST
1.500 CRP GOE
3.000 CR ST



Silindir Gömleği
(Liner)

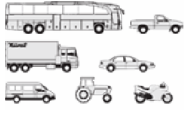


Silindir Kit
(Assembly Set)



Piston - Blok Montaj
Yüksekliği
(Piston - Block
Assembly Height)

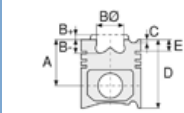




Motor Özellikleri
(Engine Specifications)

İmalatçı (Manufacturer):
PERKINS LKW
Çap (Diameter): Ø 98,48
FM Grup No: 6914

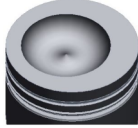
T 6.354.4
6 Sil. Dizel 5800cc
116 Kw (155 PS) 15,5:1
Turbocharge
PD 700 AS SUPER
HC - LC



Piston Ölçüleri
(Piston Dimensions)

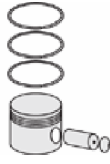
A : 70.300
B - : 19.300
BØ : 66.700
BX : 4.700
D : 108.300
E : 18.000

Pim: 38,1 x 82,8



Piston Özellikleri
(Piston Features)

Segman Taşıyıcı
(Ring Carrier)
Çelik Plaka
(Steel Strut)
Gözarası Konik
(Conical Eye Gap)



Piston Parça No
(Piston Part No)

87-319000-13
87-71728-STD1A
0,48 mm Kısa (Short)
87-319000-12
87-71728-STD A



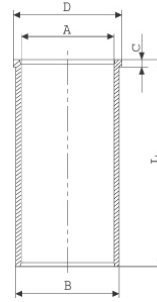
Segman Seti
(Ring Set)

06-319000-90-STD
3.160 CKP KVI
2.385 P STD
4.747 CRP STD



Silindir Gömleği
(Liner)

14-021980-00-D
B : 104.280
L : 226.440
D : 107.380
C : 3.800



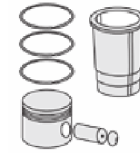
14-021981-00-D

B : 104.780
L : 226.440
D : 107.400
C : 4.000

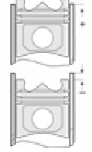
Dış Çap 0,50 mm. Farklı
(Outer Diameter
0,50 mm Different)

14-021982-00-D
B : 105.280
L : 226.440
D : 107.420
C : 4.250

Dış Çap 1,00 mm. Farklı
(Outer Diameter
1,00 mm Different)



Silindir Kit
(Assembly Set)



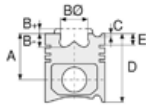
Piston - Blok Montaj
Yüksekliği
(Piston - Block
Assembly Height)

0 / + 0,18

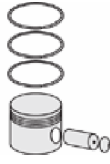




Motor Özellikleri
(Engine Specifications)



Piston Ölçüleri
(Piston Dimensions)



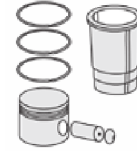
Piston Parça No
(Piston Part No)



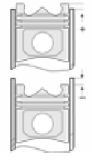
Segman Seti
(Ring Set)



Silindir Gömleği
(Liner)

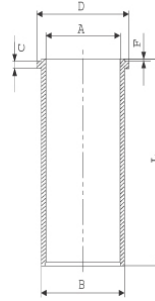


Silindir Kit
(Assembly Set)



Piston - Blok Montaj
Yüksekliği
(Piston - Block
Assembly Height)

14-045820-10-D
B : 103.330
L : 227.280
D : 106.420
C : 3.800
F : 0.900



14-045821-10-D
B : 103.830
L : 227.280
D : 106.920
C : 4.300
F : 0.900

Dış Çap 0,50mm Farklı
(Outer Diameter
0,50 mm Different)

14-045822-10-D
B : 104.330
L : 227.280
D : 107.420
C : 4.800
F : 0.900

Dış Çap 1,00mm Farklı
(Outer Diameter
1,00 mm Different)

14-045823-10-D
B : 104.830
L : 227.280
D : 107.920
C : 5.300
F : 0.900

