



PERKINS TRK - Ø 88,925

06-317200-10-STD



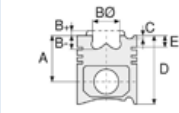
Motor Özellikleri
(Engine Specifications)

İmalatçı (Manufacturer):
PERKINS TRK
Çap (Diameter): Ø 88,925
FM Grup No: 7001

P 3.144
3 Sil. Dizel 2365cc 28
Kw (38 PS) 16,5:1
Endüstriyel (Industrial)

P 4.192 PA,PB
4 Sil. Dizel 3150cc 37
Kw (50 PS) 16,5:1
Endüstriyel (Industrial)

P 6.288 PF,PG
6 Sil. Dizel 4730cc 46
Kw (62 PS) 16,5:1
PANTHER, PHYTON,
PUMA



Piston Ölçüleri
(Piston Dimensions)

Piston Özellikleri
(Piston Features)



Piston Parça No
(Piston Part No)



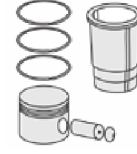
Segman Seti
(Ring Set)

06-317200-10-STD

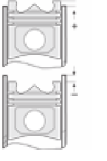
2.385		CRP	STD
2.385		P	STD
3.160		P	STD
6.335		P	STD
6.335		P	STD



Silindir Gömleği
(Liner)



Silindir Kit
(Assembly Set)



Piston - Blok Montaj
Yüksekliği
(Piston - Block
Assembly Height)





PERKINS TRK - Ø 91,48

86-71752-STD



Motor Özellikleri
(Engine Specifications)

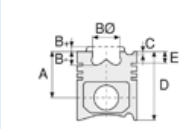
İmalatçı (Manufacturer):
PERKINS TRK
Çap (Diameter): Ø 91,48
FM Grup No: 7007

D 3.152

3 Sil. Dizel 2500cc
30 H, 40.535-02.550,
DX 35, MF 133, MF 135
MASSEY FERGUSON,
MF 148, MF 230,
MF 234C, MF 234S,
MF 235, MF 240, MF 245,
MF 250, MF 254, MF 333,
MF 350, MF255

AD 4.203

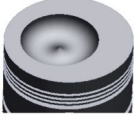
4 Sil. Dizel 3300cc
MF 155, MF 158,
MF 260, MF 560, TL 16 N



Piston Ölçüleri
(Piston Dimensions)

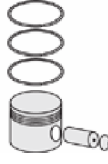
A : 62.000
B- : 18.550
BØ : 55.800
BX : 6.350
D : 109.600
E : 18.260

Pim: 31,75 x 75,3



Piston Özellikleri
(Piston Features)

Gözarası Düz
(Flat Eye Gap)



Piston Parça No
(Piston Part No)

86-71752-STD

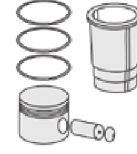


Segman Seti
(Ring Set)

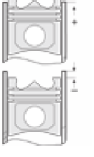
2.385
2.385
2.385
4.747
6.335



Silindir Gömleği
(Liner)

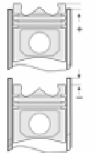
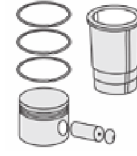
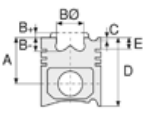


Silindir Kit
(Assembly Set)



Piston - Blok Montaj
Yüksekliği
(Piston - Block
Assembly Height)





Motor Özellikleri
(Engine Specifications)

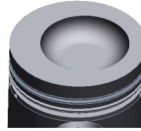
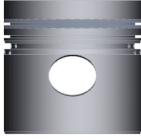
İmalatçı (Manufacturer):
PERKINS TRK
Çap (Diameter): Ø 91,48
FM Grup No: 7002

T3-152
4 Sil. Dizel 2503cc
39Kw(53Ps)
MF 225 T

Piston Ölçüleri
(Piston Dimensions)

A : 61.800
B- : 18.800
BØ : 59.690
BX : 4.450
D : 109.400
E : 18.440

Pim: 31,75 x 75,3



Piston Özellikleri
(Piston Features)

Segman Taşıyıcı
(Ring Carrier)
Gözarası Konik
(Conical Eye Gap)

Piston Parça No
(Piston Part No)

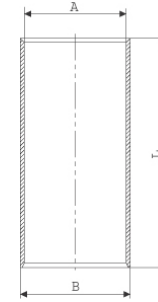
87-322000-02
87-71723-STD
87-322000-03
87-71723-STD1
0,17 mm Kısa (Short)

Segman Seti
(Ring Set)

06-322000-00-STD
2.385 CRP IKA
2.385 P STD
4.747 CRP STD

Silindir Gömleği
(Liner)

14-010520-00-D
B : 93.999
L : 215.900



Dış Çapı 0,26 mm Farklı
(Outer Diameter
0,26 mm Different)

14-016560-10-D

B : 93.850
L : 215.900

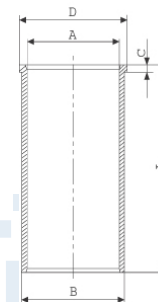
STD

14-016561-10 D
B : 94.500
L : 215.900

Dış Çap 0,76 mm Farklı
(Outer Diameter
0,76 mm Different)

14-021770-00-D

B : 93.999
L : 215.900
D : 96.660
C : 3.800



Silindir Kit
(Assembly Set)

Piston - Blok Montaj
Yüksekliği
(Piston - Block
Assembly Height)

- 0,025 / - 0,152





PERKINS TRK - Ø 91,48

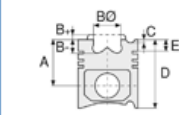
87-71730-STD



Motor Özellikleri
(Engine Specifications)

İmalatçı (Manufacturer):
PERKINS TRK
Çap (Diameter): Ø 91,48
FM Grup No: 7004

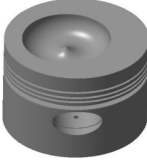
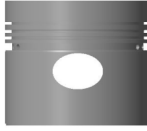
D 3.152
3 Sil. Dizel 2500cc
31/33,5 Kw (42/45,5 PS)
18,41
FORKLIFT



Piston Ölçüleri
(Piston Dimensions)

A : 62.000
B - : 18.440
BØ : 55.930
BX : 6.350
D : 109.630
E : 18.640

Pim: 31,75 x 75,3



Piston Özellikleri
(Piston Features)

Gözarası Düz
(Flat Eye Gap)



Piston Parça No
(Piston Part No)

87-883900-02
87-71730-STD



Segman Seti
(Ring Set)

06-883900-00-STD

2.385 CRP IKA
2.385 P STD
2.385 P STD
6.350 CRP STD

87-883900-02
87-71730-STD

06-884100-10-STD

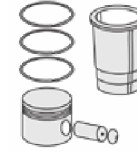
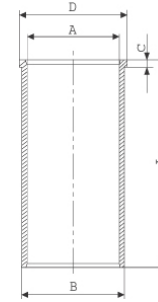
2.385 CRP IKA
2.385 P IKA
2.385 P IKA
6.350 CRP STD



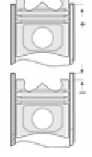
Silindir Gömleği
(Liner)

14-027320-00-D

B : 93.740
L : 215.900
D : 96.660
C : 3.800



Silindir Kit
(Assembly Set)



Piston - Blok Montaj
Yüksekliği
(Piston - Block
Assembly Height)

0 /+0,10





PERKINS TRK - Ø 91,48

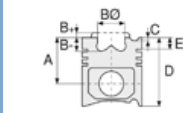
87-71732-STD



Motor Özellikleri
(Engine Specifications)

İmalatçı (Manufacturer):
PERKINS TRK
Çap (Diameter): Ø 91,48
FM Grup No: 7005

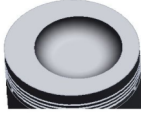
D 3.152
3 Sil. Dizel 2500cc
31-35Kw(42-48Ps) 18,4:1
MF 240-S



Piston Ölçüleri
(Piston Dimensions)

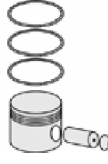
A : 62.000
B- : 19.250
BØ : 59.600
BX : 4.450
D : 109.600
E : 18.640

Pim: 31,75 x 75,3



Piston Özellikleri
(Piston Features)

Gözarası Düz
(Flat Eye Gap)



Piston Parça No
(Piston Part No)

87-087460-02
87-71732-STD



Segman Seti
(Ring Set)

06-087460-00-STD

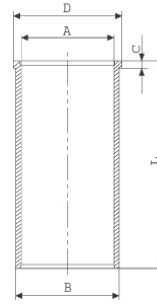
2.385 CRP IKA
2.385 P IKA
2.385 P IKA
4.747 CR ST



Silindir Gömleği
(Liner)

14-025830-00-D

B : 93.810
L : 216.000
D : 96.660
C : 5.000



14-025831-10-D

B : 94.310
L : 216.000
D : 96.660
C : 6.000

Dış Çap 0,50mm Farklı
(Outer Diameter
0,50 mm Different)

14-025832-10-D

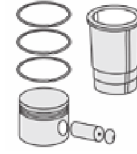
B : 94.810
L : 216.000
D : 97.660
C : 6.000

Dış Çap 1,00mm Farklı
(Outer Diameter
1,00 mm Different)

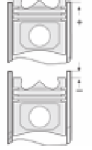
14-025833-10-D

B : 95.310
L : 216.000
D : 98.160
C : 6.250

Dış Çap 1,50mm Farklı
(Outer Diameter
1,50 mm Different)



Silindir Kit
(Assembly Set)



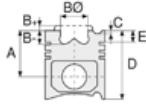
Piston - Blok Montaj
Yüksekliği
(Piston - Block
Assembly Height)

-0,025/+0,010

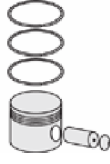




Motor Özellikleri
(Engine Specifications)



Piston Ölçüleri
(Piston Dimensions)



Piston Parça No
(Piston Part No)



Segman Seti
(Ring Set)



Silindir Gömleği
(Liner)

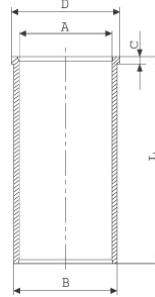
14-025834-10-D

B : 95.810
L : 216.000
D : 98.660
C : 6.500

Dış Çap 1,20mm Farklı
(Outer Diameter
1,20 mm Different)

14-026450-00-D

B : 93.820
L : 216.000
D : 96.950
C : 5.000



Geniş Flanşlı
(Wide Flange)

14-026451-10-D

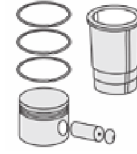
B : 93.820
L : 216.000
D : 96.950
C : 5.500

Dış Çap 0,50mm Farklı
(Outer Diameter
0,50 mm Different)

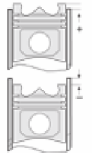
14-026452-10-D

B : 94.820
L : 216.000
D : 97.950
C : 6.000

Dış Çap 1,00mm Farklı
(Outer Diameter
1,00 mm Different)



Silindir Kit
(Assembly Set)



Piston - Blok Montaj
Yüksekliği
(Piston - Block
Assembly Height)





PERKINS TRK - Ø 91,48

87-73504-STD

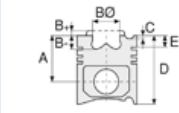


Motor Özellikleri
(Engine Specifications)

İmalatçı (Manufacturer):
PERKINS TRK
Çap (Diameter): Ø 91,48
FM Grup No: 7038

3.152 EURO 2

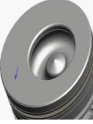
3 Sil. Dizel 27-48 PS
MF 150, MF 155, MF 164,
MF 20, MF 254, MF 263,
MF 342, MF 35, MF 354
1972 - 1996



Piston Ölçüleri
(Piston Dimensions)

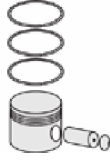
A : 61.884
B- : 21.600
BØ : 45.400
BX : 6.300
D : 99.900
E : 9.950

Pim: 31,75 x 75



Piston Özellikleri
(Piston Features)

Segman Taşıyıcı
(Ring Carrier)
Gözarası Düz
(Flat Eye Gap)



Piston Parça No
(Piston Part No)

87-894100-02
87-73504-STD



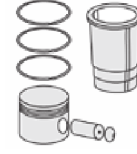
Segman Seti
(Ring Set)

06-894100-00-STD

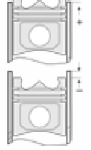
2.388 CRP KV1
2.385 P GOE
4.763 CRP STD



Silindir Gömleği
(Liner)



Silindir Kit
(Assembly Set)



Piston - Blok Montaj
Yüksekliği
(Piston - Block
Assembly Height)





PERKINS TRK - Ø 91,48

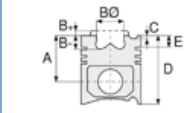
87-73530-STD



Motor Özellikleri
(Engine Specifications)

İmalatçı (Manufacturer):
PERKINS TRK
Çap (Diameter): Ø 91,48
FM Grup No: 7036

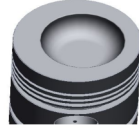
3152
3 Sil. Dizel 2503cc
47-54.5 PS (35-40 KW)
MF 240



Piston Ölçüleri
(Piston Dimensions)

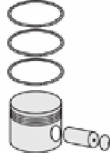
A : 61.750
B- : 18.900
BØ : 59.600
BX : 4.000
D : 109.300
E : 17.400

Pim: 31,75 x 75,3



Piston Özellikleri
(Piston Features)

Gözarası Düz
(Flat Eye Gap)



Piston Parça No
(Piston Part No)

87-314600-52
87-73530-STD



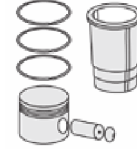
Segman Seti
(Ring Set)

06-314600-20-STD

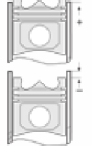
2.385 CRP KV1
2.385 P GOE
3.160 P GOE
6.350 CRP GOE
6.335 P GOE



Silindir Gömleği
(Liner)



Silindir Kit
(Assembly Set)



Piston - Blok Montaj
Yüksekliği
(Piston - Block
Assembly Height)

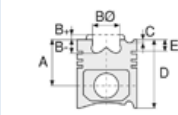




Motor Özellikleri
(Engine Specifications)

İmalatçı (Manufacturer):
PERKINS TRK
Çap (Diameter): Ø 95
FM Grup No: 7032

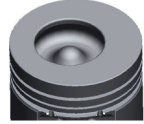
903.27 EURO 1
3 Sil. Dizel 2700cc
38-40kW(52-54 PS) 17,5:1
CP81321, FORKLİFT,
H/25-30 FLT, H/35,
LANDINI MINI TRK
CP80942, LANDINI
TRK 5860, LINDE
FORKLİFT H/20-25 FLT,
MANİTOU TRK, MF250 İ,
MF250G, MF4215,
MF4235, MİKSER CP
SERİ, REX60, TAFE TRK
CP81320, UZEL
JENERANTÖR CP
1993....



Piston Ölçüleri
(Piston Dimensions)

A : 62.050
B- : 21.000
BØ : 50.000
BX : 4.500
BY : 0.500
D : 99.750
E : 12.700

Pim: 31,75 x 75



Piston Özellikleri
(Piston Features)

Gözarası Düz
(Flat Eye Gap)



Piston Parça No
(Piston Part No)

87-881100-12
87-73516-STD A



Segman Seti
(Ring Set)

06-881100-90-STD

2.500 █ CKP KV1
2.000 █ P F14
4.000 █ CRP GOE

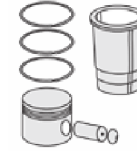
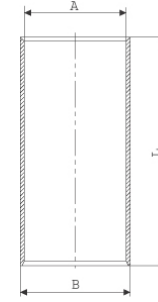
Goetze® LKZ-Ring®



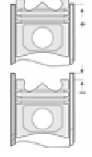
Silindir Gömleği
(Liner)

14-010380-00-D

B : 97.100
L : 216.000



Silindir Kit
(Assembly Set)



Piston - Blok Montaj
Yüksekliği
(Piston - Block
Assembly Height)

+0,23 / +0,35





PERKINS TRK - Ø 98,48

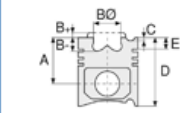
87-71726-STD



Motor Özellikleri
(Engine Specifications)

İmalatçı (Manufacturer):
PERKINS TRK
Çap (Diameter): Ø 98,48
FM Grup No: 7011

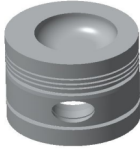
AD 4.236,D 39 C
4 Sil. Dizel 3864cc
57,5/59 Kw (78/80 PS) 16:1
5 Yuva Segmanlı
(5 Slot Segmented)
D 350 KAMYONET,
MF 265 S, MF 275,
VOLVO P4
1961....



Piston Ölçüleri
(Piston Dimensions)

A : 70.610
B- : 20.770
BØ : 61.000
BX : 3.180
D : 121.410
E : 21.400

Pim: 34,925 x 84,1



Piston Özellikleri
(Piston Features)

Sert Anotlama
(Hard Anodizing)
Gözarası Konik
(Conical Eye Gap)



Piston Parça No
(Piston Part No)

87-315000-42
87-71726-STD
87-315000-43
87-71726-STD1
0,36 mm Kısa (Short)



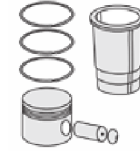
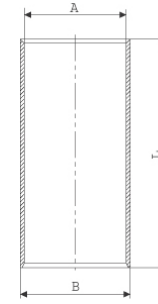
Segman Seti
(Ring Set)

06-315000-20-STD
2.385 CRP KV1
2.385 P IKA
2.385 P IKA
6.350 CRP STD
6.350 P STD

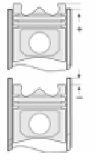


Silindir Gömleği
(Liner)

14-016160-00-D
B : 103.290
L : 103.302
D : 228.980



Silindir Kit
(Assembly Set)



Piston - Blok Montaj
Yüksekliği
(Piston - Block
Assembly Height)





PERKINS TRK - Ø 98,48

87-71733-STD

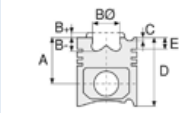


Motor Özellikleri
(Engine Specifications)

İmalatçı (Manufacturer):
PERKINS TRK
Çap (Diameter): Ø 98,48
FM Grup No: 7008

4.212

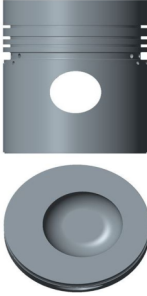
4 Sil. Dizel 3475cc
44/47 Kw (60/64 PS) 15,5:1
Motor no:--> 712UA87004
Endüstriyel (Industrial)
1969....



Piston Ölçüleri
(Piston Dimensions)

A : 76.500
B- : 19.000
BØ : 54.000
BX : 4.000
D : 127.300
E : 21.000

Pim: 34,925 x 84,1



Piston Özellikleri
(Piston Features)

Gözarası Düz
(Flat Eye Gap)



Piston Parça No
(Piston Part No)

87-883800-02
87-71733-STD



Segman Seti
(Ring Set)

06-883800-10-STD

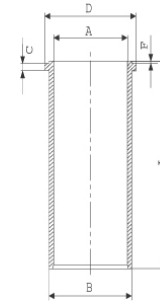
2.385 CRP KV1
2.385 P STD
2.385 P STD
6.350 CRP STD



Silindir Gömleği
(Liner)

14-045820-10-D

B : 103.330
L : 227.280
D : 106.420
C : 3.800
F : 0.900



14-045821-10-D

B : 103.830
L : 227.280
D : 106.920
C : 4.300
F : 0.900

Dış Çap 0,50mm Farklı
(Outer Diameter
0,50 mm Different)

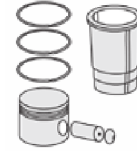
14-045822-10 D

B : 104.330
L : 227.280
D : 107.420
C : 4.800
F : 0.900

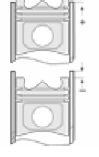
Dış Çap 1,00mm Farklı
(Outer Diameter
1,00 mm Different)

14-045823-10-D

B : 104.830
L : 227.280
D : 107.920
C : 5.300
F : 0.900



Silindir Kit
(Assembly Set)



Piston - Blok Montaj
Yüksekliği
(Piston - Block
Assembly Height)

+ 0,38 / + 0,53





PERKINS TRK - Ø 98,48

87-71759-STDA



Motor Özellikleri
(Engine Specifications)

İmalatçı (Manufacturer):
PERKINS TRK
Çap (Diameter): Ø 98,48
FM Grup No: 7015

AD 4.236
4 Sil. Dizel 3864cc
75 Kw (102 PS) 16:1
Turbocharge
398 TURBO TRAKTOR

Piston Ölçüleri
(Piston Dimensions)

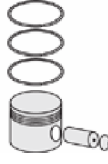
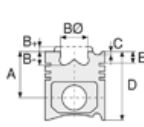
A : 70.400
B- : 20.050
BØ : 60.000
BX : 3.180
D : 108.400
E : 10.000

Pim: 38,1 x 82,8



Piston Özellikleri
(Piston Features)

Segman Taşıyıcı
(Ring Carrier)
Çelik Plaka
(Steel Strut)
Gözarası Konik
(Conical Eye Gap)



Piston Parça No
(Piston Part No)

87-319000-32
87-71759-STDA
87-319000-33
87-71759STD1A
0,15 mm Kısa (Short)

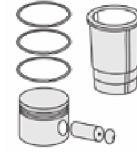


Segman Seti
(Ring Set)

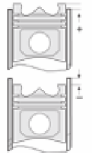
06-319000-90-STD
3.160 CKP KVI
2.385 P STD
4.747 CRP STD



Silindir Gömleği
(Liner)



Silindir Kit
(Assembly Set)



Piston - Blok Montaj
Yüksekliği
(Piston - Block
Assembly Height)

-0,28/+0,48





PERKINS TRK - Ø 98,48

87-71759-STD A



Motor Özellikleri
(Engine Specifications)

İmalatçı (Manufacturer):
PERKINS TRK
Çap (Diameter): Ø 98,48
FM Grup No: 7037

4.236

4 Sil. 3864cc
60KW(80 PS)
MF 175, MF 240,
MF 350, MF 380,
MF 440, MF 450
1975 - 1979

Piston Ölçüleri
(Piston Dimensions)

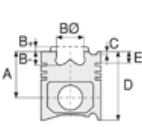
A : 70.250
B- : 20.360
BØ : 60.850
BX : 3.180
D : 120.950
E : 20.860

Pim: 34,925 x 83,9



Piston Özellikleri
(Piston Features)

Segman Taşıyıcı
(Ring Carrier)
Gözarası Düz
(Flat Eye Gap)



Piston Parça No
(Piston Part No)

87-894200-02
87-73520-STD



Segman Seti
(Ring Set)

06-894200-00-STD

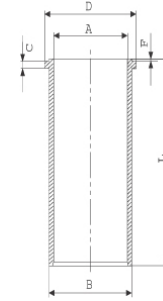
2.385 CRP KVI
2.385 P STD
2.385 P STD
6.350 CRP STD
6.335 P STD



Silindir Gömleği
(Liner)

14-045820-10-D

B : 103.330
L : 227.280
D : 106.420
C : 3.800
F : 0.900



14-045821-10-D

B : 103.830
L : 227.280
D : 106.920
C : 4.300
F : 0.900

Dış Çap 0,50mm Farklı
(Outer Diameter
0,50 mm Different)

14-045822-10-D

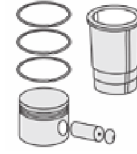
B : 104.330
L : 227.280
D : 107.420
C : 4.800
F : 0.900

Dış Çap 1,00mm Farklı
(Outer Diameter
1,00 mm Different)

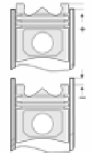
14-045823-10 D

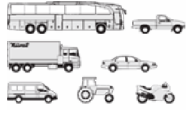
B : 104.830
L : 227.280
D : 107.920
C : 5.300
F : 0.900

Silindir Kit
(Assembly Set)



Piston - Blok Montaj
Yüksekliği
(Piston - Block
Assembly Height)

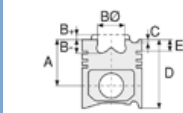




Motor Özellikleri
(Engine Specifications)

İmalatçı (Manufacturer):
PERKINS TRK
Çap (Diameter): Ø 101,079
FM Grup No: 7022

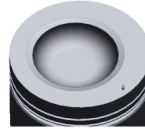
4.248
4 Sil. Dizel 4064cc
62 Kw (85 PS) 16:1
MF 285 S
1982....



Piston Ölçüleri
(Piston Dimensions)

A : 70.300
B- : 21.130
BØ : 61.450
BX : 3.200
D : 121.100
E : 21.400

Pim: 34,925 x 84,1



Piston Özellikleri
(Piston Features)

Çelik Plaka
(Steel Strut)
Gözarası Düz
(Flat Eye Gap)



Piston Parça No
(Piston Part No)

87-322700-33
87-71741-STD1A
0,41 mm Kısa (Short)
87-322700-32
87-71741-STD A



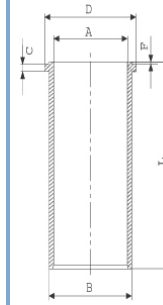
Segman Seti
(Ring Set)

06-322700-90-STD
2.500 CKP KV1
2.500 P STD
5.000 CRP STD



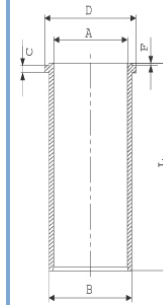
Silindir Gömleği
(Liner)

14-040290-00-DH
B : 104.230
L : 227.300
D : 107.400
C : 3.800
F : 0.850



14-041140-00-D

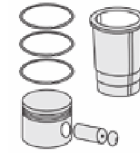
B : 104.350
L : 227.280
D : 107.440
C : 3.800
F : 0.900



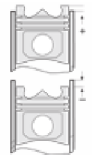
14-041141-10-D

B : 104.850
L : 227.280
D : 107.440
C : 3.800
F : 0.900

Dış Çap 0,50mm Farklı
(Outer Diameter
0,50 mm Different)



Silindir Kit
(Assembly Set)



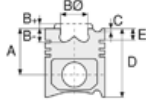
Piston - Blok Montaj
Yüksekliği
(Piston - Block
Assembly Height)

+0,046/+0,262





Motor Özellikleri
(Engine Specifications)



Piston Ölçüleri
(Piston Dimensions)



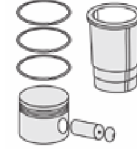
Piston Parça No
(Piston Part No)



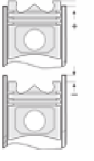
Segman Seti
(Ring Set)



Silindir Gömleği
(Liner)



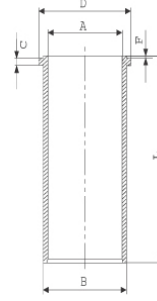
Silindir Kit
(Assembly Set)



Piston - Blok Montaj
Yüksekliği
(Piston - Block
Assembly Height)

14-041610-00-D

B : 104.280
L : 227.280
D : 107.380
C : 3.800
F : 0.900





Motor Özellikleri
(Engine Specifications)

İmalatçı (Manufacturer):
PERKINS TRK
Çap (Diameter): Ø 101,079
FM Grup No: 7021

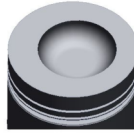
4.248

4 Sil. Dizel 4064cc
62 Kw (85 PS) 16:1
MF 11,178,185,186,188,
194, MF 285 S
1982....

Piston Ölçüleri
(Piston Dimensions)

A : 70.300
B- : 21.100
BØ : 61.450
BX : 3.200
D : 121.100
E : 21.400

Pim: 34,925 x 84,1



Piston Özellikleri
(Piston Features)

Çelik Plaka
(Steel Strut)
Gözarası Düz
(Flat Eye Gap)



Piston Parça No
(Piston Part No)

87-322700-23
87-71742-STD1A
0,40 mm Kısa (Short)
87-322700-22
87-71742-STDA



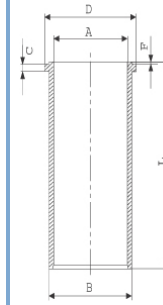
Segman Seti
(Ring Set)

06-322700-90-STD
2.500 CKP KV1
2.500 P STD
5.000 CRP STD



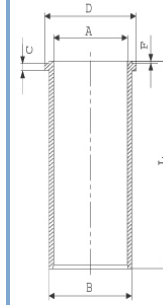
Silindir Gömleği
(Liner)

14-040290-00-DH
B : 104.230
L : 227.300
D : 107.400
C : 3.800
F : 0.850



14-041140-00-D

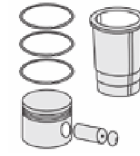
B : 104.350
L : 227.280
D : 107.440
C : 3.800
F : 0.900



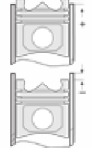
14-041141-10-D

B : 104.850
L : 227.280
D : 107.440
C : 3.800
F : 0.900

Dış Çap 0,50mm Farklı
(Outer Diameter
0,50 mm Different)



Silindir Kit
(Assembly Set)



Piston - Blok Montaj
Yüksekliği
(Piston - Block
Assembly Height)

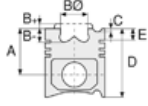
+ 0,08/+0,25

+0,60 / +0,65

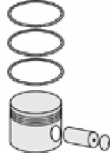




Motor Özellikleri
(Engine Specifications)



Piston Ölçüleri
(Piston Dimensions)



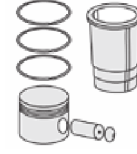
Piston Parça No
(Piston Part No)



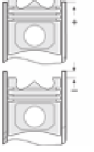
Segman Seti
(Ring Set)



Silindir Gömleği
(Liner)



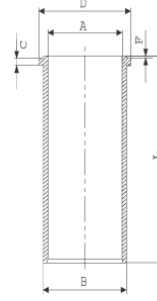
Silindir Kit
(Assembly Set)



Piston - Blok Montaj
Yüksekliği
(Piston - Block
Assembly Height)

14-041610-00-D

B : 104.280
L : 227.280
D : 107.380
C : 3.800
F : 0.900





Motor Özellikleri
(Engine Specifications)

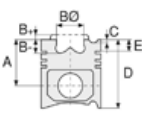
İmalatçı (Manufacturer):
PERKINS TRK
Çap (Diameter): Ø 105
FM Grup No: 7028

1103B/C-33T
EURO 2 (RG)

3 Sil. Dizel 3300cc
39-43Kw(53-58 Ps) 19,25:1
Doğal Emişli (Naturally Aspirated)
Erkunt TRK, LANDINI POWERFARM 60, MF266 G, MF3050, MF3060
2004....

1104C-44
EURO 2 (RG)

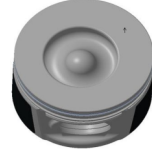
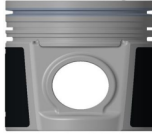
4 Sil. Dizel 4400cc
50-64 Kw (67-84 Ps) 19,3:1
Doğal emişli (Naturally Aspirated)
860 ELIT FERMEC, ÇUKUROVA 860SX, HIDROMEK 102/B, HIDROMEK 102/S, LANDINI POWERFARM 75/95/105, LCB 4 CX, SANKO MASTAŞ 444/E
2004....



Piston Ölçüleri
(Piston Dimensions)

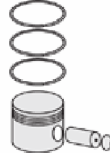
A : 70.140
B- : 22.000
BØ : 55.100
BX : 2.500
BY : 1.500
D : 108.000
E : 8.000

Pim: 39,7 x 78



Piston Özellikleri
(Piston Features)

Segman Taşıyıcı
(Ring Carrier)
Gözarası Konik
(Conical Eye Gap)



Piston Parça No
(Piston Part No)

87-880807-13
87-73512-0501A
0,20 mm Kısa (Short)

87-880807-12
87-73512-050A

87-880811-13
87-73512-1001A
0,20 mm Kısa (Short)

87-880800-13
87-73512-STD1A
0,20 mm Kısa (Short)

87-880800-14
87-73512-STD2A
0,40 mm Kısa (Short)

87-880800-12
87-73512-STD A

87-880811-12
87-73512 100A



Segman Seti
(Ring Set)

06-880800-90-STD
06-880807-90 0,50 mm
06-880811-90 1,00 mm

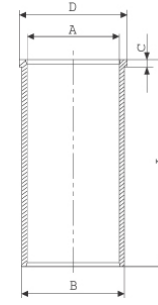
3.500 CKP KV1
2.500 P IKA
3.500 CRP STD



Silindir Gömleği
(Liner)

14-020870-00-D

B : 108.000
L : 127.000
D : 109.500
C : 5.000



14-020871-00-D

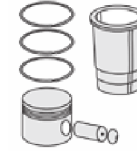
B : 108.500
L : 227.000
D : 110.000
C : 5.500

Dış Çap 0,50 mm Farklı
(Outer Diameter
0,50 mm Different)

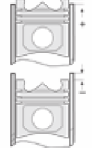
14-020872-00 D

B : 109.000
L : 227.000
D : 110.500
C : 6.000

Dış Çap 1,00 mm Farklı
(Outer Diameter
1,00 mm Different)



Silindir Kit
(Assembly Set)



Piston - Blok Montaj
Yüksekliği
(Piston - Block
Assembly Height)

+0,21 / +0,35

+0,36/+0,50





Motor Özellikleri
(Engine Specifications)

İmalatçı (Manufacturer):
PERKINS TRK
Çap (Diameter): Ø 105
FM Grup No: 7030

1104C-44 EURO 2

4 Sil. Dizel 4400cc
99 HP 18,2:1

Turbo

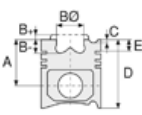
5445, 5455, 6445, 6455,
860 ELIT FERMEC,
ÇUKUROVA 860SX,
HIDROMEK 102/B,
HIDROMEK 102/S,
LANDINI POWERFARM
75/95/105, LCB 4 CX,
MF 5435, SANKO
MASTAŞ 444/E
2003....

1103C-33 EURO2

3 Sil. Dizel

Turbo

3425, Erkunt TRK,
LANDINI POWERFARM
60, MF 420, MF266 G,
MF3050, MF3060
2003....



Piston Ölçüleri
(Piston Dimensions)

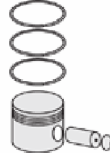
A : 70.140
B- : 22.350
BØ : 51.300
BX : 2.500
BY : 1.500
D : 108.000
E : 10.000

Pim: 39,7 x 70



Piston Özellikleri
(Piston Features)

Gözarası Konik
(Conical Eye Gap)



Piston Parça No
(Piston Part No)

87-880900-12
87-73513-STD A



Segman Seti
(Ring Set)

06-880900-90-STD

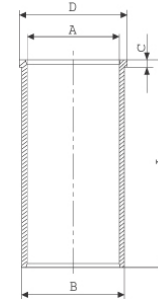
2.500 CKP KV1
2.500 P IKA
3.500 CRP STD



Silindir Gömleği
(Liner)

14-020870-00-D

B : 108.000
L : 127.000
D : 109.500
C : 5.000



14-020871-00-D

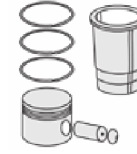
B : 108.500
L : 227.000
D : 110.000
C : 5.500

Dış Çap 0,50 mm Farklı
(Outer Diameter
0,50 mm Different)

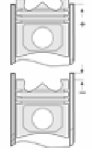
14-020872-00-D

B : 109.000
L : 227.000
D : 110.500
C : 6.000

Dış çap 1,00 mm Farklı
(Outer Diameter
1,00 mm Different)



Silindir Kit
(Assembly Set)



Piston - Blok Montaj
Yüksekliği
(Piston - Block
Assembly Height)

+0,21 / +0,35

+0,36/+0,50

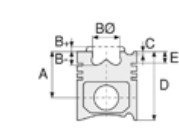




Motor Özellikleri
(Engine Specifications)

İmalatçı (Manufacturer):
PERKINS TRK
Çap (Diameter): Ø 105
FM Grup No: 7040

1104C-44T /
1104D-44 TA (NM)
4 Sil. Dizel 4400cc
82-116 PS
MF5435, MF5445, MF5455
2011....



Piston Ölçüleri
(Piston Dimensions)

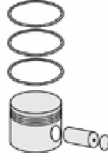
A : 70.140
B- : 22.900
BØ : 50.000
D : 108.000
E : 8.000

Pim: 39,7 x 78



Piston Özellikleri
(Piston Features)

Segman Taşıyıcı
(Ring Carrier)
Gözarası Konik
(Conical Eye Gap)



Piston Parça No
(Piston Part No)

87-881700-02
87-73518-STD
87-881707-02
87-73518 0,50

87-881707-03
87-73518-STD1
0,20 mm Kısa (Short)



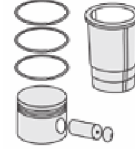
Segman Seti
(Ring Set)

06-881700-00-STD

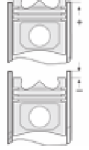
3.000  CKS KV1
2.500  P GOE
3.000  CR GOE



Silindir Gömleği
(Liner)



Silindir Kit
(Assembly Set)



Piston - Blok Montaj
Yüksekliği
(Piston - Block
Assembly Height)





PERKINS TRK - Ø 130,175

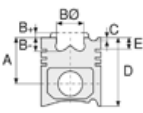
14-489260-00-WH



Motor Özellikleri
(Engine Specifications)

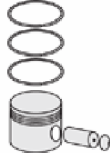
İmalatçı (Manufacturer):
PERKINS TRK
Çap (Diameter): Ø 130,175
FM Grup No: 7025

C6RH
6 Sil. Dizel 12170cc
C 132-010/015/020/021,
C 160-010/015/020/021



Piston Ölçüleri
(Piston Dimensions)

Piston Özellikleri
(Piston Features)



Piston Parça No
(Piston Part No)



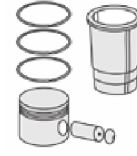
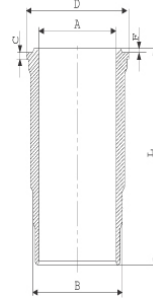
Segman Seti
(Ring Set)



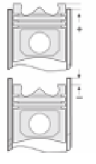
Silindir Gömleği
(Liner)

14-489260-00-WH

B : 144.082
L : 306.580
D : 154.838
C : 12.700
F : 0.610



Silindir Kit
(Assembly Set)



Piston - Blok Montaj
Yüksekliği
(Piston - Block
Assembly Height)

