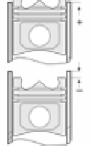




RUGGERINI - Ø 80

87-71870-STD



Motor Özellikleri
(Engine Specifications)

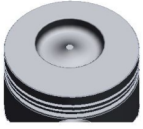
İmalatçı (Manufacturer):
Ruggerini
Çap (Diameter): 80
FM Grup No: 7301

RF 80
1 Sil. Dizel 337cc 5,15/5,6/
6 Kw (7/7,6/8,2 PS) 19:1
ÇAPA MAKINASI (Hoeng
Machine),
JENERATÖR (Generator),
MOTOPOMP (Motor
Pump)

Piston Ölçüleri
(Piston Dimensions)

A : 40.000
B- : 15.000
B0 : 40.500
BX : 1.000
BY : 5.000
D : 75.000
E : 11.000

Pim: 22 x 67,5



Piston Özellikleri
(Piston Features)

Gözarası Düz
(Flat Eye Gap)

Piston Parça No
(Piston Part No)

87-847300-02
87-71870-STD
87-847307-02
87-71870 050
87-847311-02
87-71870 100

Segman Seti
(Ring Set)

06-847300-00-STD
06-847307-00 0,50 mm
06-847311-00 1,00 mm
2.500 CRP STD
2.500 P STD
4.000 CRP STD

Silindir Gömleği
(Liner)

Silindir Kit
(Assembly Set)

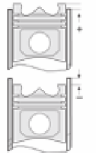
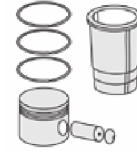
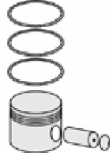
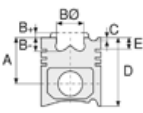
Piston - Blok Montaj
Yüksekliği
(Piston - Block
Assembly Height)





RUGGERINI - Ø 90

87-71872-STD



Motor Özellikleri
(Engine Specifications)

İmalatçı (Manufacturer):
Ruggerini
Çap (Diameter): 90
FM Grup No: 7303

RF 90

1 Sil. Dizel 477cc 6,3/6,8/
7,4 Kw (8,6/9,3/10 PS)
18,5:1
ÇAPA MAKINASI (Hoeing
Machine),
JENERATÖR (Generator),
MOTOPOMP (Motor
Pump)

Piston Ölçüleri
(Piston Dimensions)

A : 40.000
B- : 14.700
B0 : 40.300
BX : 1.000
BY : 5.000
D : 80.000
E : 11.000

Pim: 22 x 64



Piston Özellikleri
(Piston Features)

Gözarası Konik
(Conical Eye Gap)

Piston Parça No
(Piston Part No)

87-847400-22
87-71872-STD
87-847407-22
87-71872 050
87-847411-22
87-71872 100

Segman Seti
(Ring Set)

06-847400-00-STD
06-847407-00 0,50 mm
06-847411-00 1,00 mm
2.000 CRP KV1
2.000 P STD
4.000 CRP STD

Silindir Gömleği
(Liner)

Silindir Kit
(Assembly Set)

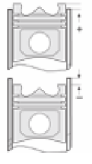
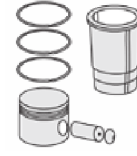
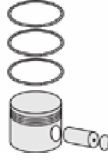
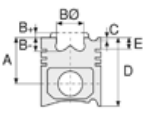
Piston - Blok Montaj
Yüksekliği
(Piston - Block
Assembly Height)





RUGGERINI - Ø 95

87-71873-STD



Motor Özellikleri
(Engine Specifications)

İmalatçı (Manufacturer):
Ruggerini
Çap (Diameter): 95
FM Grup No: 7304

RF 140
1 Sil. Dizel 602cc 8,5/9,2/
10 Kw (11,5/12,5/13,6 PS)
18:1
ÇAPA MAKINASI (Hoeing
Machine),
JENERATÖR (Generator),
MOTOPOMP (Motor
Pump)

Piston Ölçüleri
(Piston Dimensions)

A : 50.000
B- : 18.500
BØ : 34.340
BX : 1.000
BY : 5.000
D : 93.000
E : 12.500

Pim: 25 x 74



Piston Özellikleri
(Piston Features)

Gözarası Konik
(Conical Eye Gap)

Piston Parça No
(Piston Part No)

87-847500-02
87-71873-STD
87-847507-02
87-71873 050
87-847511-02
87-71873 100

Segman Seti
(Ring Set)

06-847500-00-STD
06-847507-00 0,50 mm
06-847511-00 1,00 mm
2.500 CRP KV1
2.500 P STD
2.500 P STD
5.500 P STD

Silindir Gömleği
(Liner)

Silindir Kit
(Assembly Set)

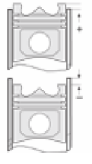
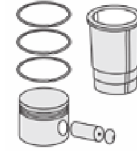
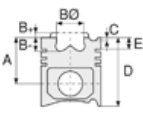
Piston - Blok Montaj
Yüksekliği
(Piston - Block
Assembly Height)





RUGGERINI - Ø 90

87-71874-STD



Motor Özellikleri
(Engine Specifications)

İmalatçı (Manufacturer):
Ruggerini
Çap (Diameter): 90
FM Grup No: 7306

RF 140

1 Sil. Dizel 541cc 7,6/8,24/
8,98 Kw(10,3/11,2/12,2 PS)
18:1
ÇAPA MAKINASI (Hoing
Machine),
JENERATÖR (Generator),
MOTOPOMP (Motor
Pump)

Piston Ölçüleri
(Piston Dimensions)

A : 50.000
B- : 17.000
BØ : 42.000
BX : 1.000
BY : 5.000
D : 100.000
E : 11.000

Pim: 25 x 74



Piston Özellikleri
(Piston Features)

Gözarası Düz
(Flat Eye Gap)

Piston Parça No
(Piston Part No)

87-848400-02
87-71874-STD
87-848407-02
87-71874-050
87-848411-02
87-71874-100

Segman Seti
(Ring Set)

06-848400-00-STD
06-848407-00 0,50 mm
06-848411-00 1,00 mm
2.500 CRP STD
2.500 P STD
2.500 P STD
5.000 CRP STD

Silindir Gömleği
(Liner)

Silindir Kit
(Assembly Set)

Piston - Blok Montaj
Yüksekliği
(Piston - Block
Assembly Height)





RUGGERINI - Ø 105

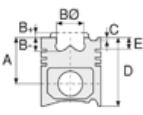
06-886400-00-STD



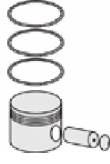
Motor Özellikleri
(Engine Specifications)

İmalatçı (Manufacturer):
Ruggerini
Çap (Diameter): 105
FM Grup No: 7305

RF 380
1 Sil. Dizel
ÇAPA MAKINASI (Hoeing
Machine), JENERATÖR
(Generator), MOTO POMP
(Motor Pump)



Piston Ölçüleri
(Piston Dimensions)



Piston Parça No
(Piston Part No)



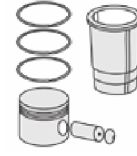
Segman Seti
(Ring Set)

06-886400-00-STD

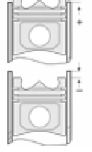
2.500 CRP KV1
2.500 CRP STD
2.500 P STD
5.000 P STD



Silindir Gömleği
(Liner)



Silindir Kit
(Assembly Set)



Piston - Blok Montaj
Yüksekliği
(Piston - Block
Assembly Height)

