



**Motor Özellikleri**  
(Engine Specifications)

İmalatçı (Manufacturer):  
Saab-Scania  
Çap (Diameter): 115  
FM Grup No: 7564

**DS9-01**  
6 Sil. Dizel 8471cc  
162/180 KW (220/245)PS  
TURBO  
G82M, P82M, P92M  
1985 - 1988

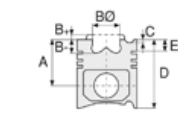
**DS9-02**  
6 Sil. Dizel 8471cc  
162/180 KW (220/245)PS  
TURBO  
G82M, P82M, P92M  
1985 - 1988

**DS9-01L01**  
6 Sil. Dizel 8471cc  
180/202 KW (245/275 PS)  
TURBO  
G92H, G92M, P92H,  
P92HB, P92M, P92MA,  
R92H, R92M

**DS9-01L02**  
6 Sil. Dizel 8471cc  
180/202 KW (245/275 PS)  
TURBO  
G92H, G92M, P92H,  
P92HB, P92M, P92MA,  
R92H, R92M

**DSC9-02**  
6 Sil. Dizel 8471cc  
207 KW(282 PS)  
TURBO INTERCOOLER  
G92, G93, P92, P93ML,  
R92, R93, T92  
1985 - 1995

**DS9-03B01**  
6 Sil. Dizel 8471cc  
150 KW (204 PS)  
TURBO  
K92CL, K92CR, P93  
1987 - 1997



**Piston Ölçüleri**  
(Piston Dimensions)

A : 87.400  
B- : 22.150  
BØ : 69.000  
BX : 3.000  
BY : 2.000  
C1 : 2.600  
C2 : 2.400  
D : 139.400  
E : 21.640

Pim: 50 x 92



**Piston Özellikleri**  
(Piston Features)

Segman Taşıyıcı  
(Ring Carrier)  
Yağ Püskürtme Oyuğu  
(Oil Jet Cut-out)  
Gözarası Konik  
(Conical Eye Gap)



**Piston Parça No**  
(Piston Part No)

87-960900-22  
87-71893-STD



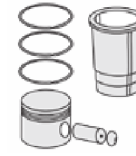
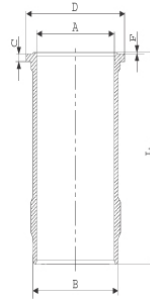
**Segman Seti**  
(Ring Set)

06-960900-20-STD  
3.160 CR KV1  
2.385 STD  
4.747 CR STD  
Goetze® LKZ-Ring®



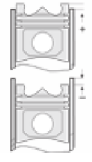
**Silindir Gömleği**  
(Liner)

14-374990-00-WH  
B : 130.000  
L : 270.500  
D : 137.300  
C : 8.200  
F : 0.800



**Silindir Kit**  
(Assembly Set)

88-960900-22-STD  
88-71893-STD



**Piston - Blok Montaj**  
Yüksekliği  
(Piston - Block  
Assembly Height)

+0,07 / +0,50



SAAB - SCANIA - Ø 115

87-71893-STD

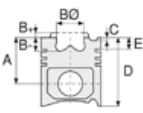


**Motor Özellikleri**  
(Engine Specifications)

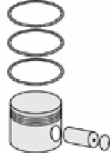
**DS9-04**  
6 Sil. Dizel 8471cc  
150 KW (204 PS)  
TURBO  
G82M, P82M

**DS9-01L01**  
6 Sil. Dizel 8471cc  
TURBO INTERCOOLED  
G92H, G92M, P92H,  
P92HB, P92M, P92MA,  
R92H, R92M

**DSC9-01L02**  
6 Sil. Dizel 8471cc  
TURBO INTERCOOLED  
G92H, G92M, P92H,  
P92HB, P92M, P92MA,  
R92H, R92M



**Piston Ölçüleri**  
(Piston Dimensions)



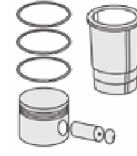
**Piston Parça No**  
(Piston Part No)



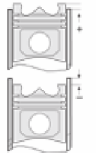
**Segman Seti**  
(Ring Set)



**Silindir Gömleği**  
(Liner)

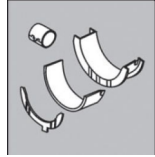


**Silindir Kit**  
(Assembly Set)



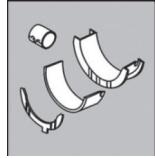
**Piston - Blok Montaj**  
Yüksekliği  
(Piston - Block  
Assembly Height)

**Ana Yatak**  
(Main Bearing)



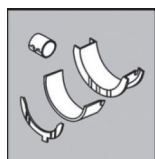
H1073/7 STD

**Kol Yatak**  
(Connecting Rod Bearing)



71-4214/6 STD

**Ay Yatak**  
(Thrust Washer)



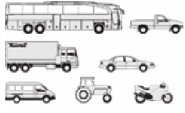
A271/4 STD

**Sil. Kapak. Conta**  
(Cylinder Head Gasket)



HL605



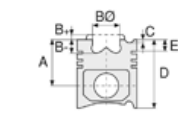


**Motor Özellikleri**  
(Engine Specifications)

İmalatçı (Manufacturer):  
Saab-Scania  
Çap (Diameter): 115  
FM Grup No: 7515

**DSC 09 EURO2**

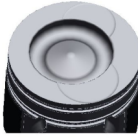
6 Sil. Dizel 8724cc  
310 PS 15,5:1  
Turbocharged Intercooled  
R94  
1996....



**Piston Ölçüleri**  
(Piston Dimensions)

A : 83.400  
B- : 20.500  
BØ : 71.500  
BX : 3.000  
BY : 2.000  
C1 : 0.500  
D : 130.950  
E : 12.000

Pim: 50 x 91,8



**Piston Özellikleri**  
(Piston Features)

Segman Taşıyıcı  
(Ring Carrier)  
Gözarası Konik  
(Conical Eye Gap)



**Piston Parça No**  
(Piston Part No)

87-109200-12  
87-71899-STD A



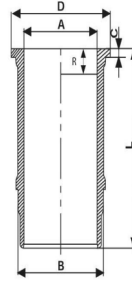
**Segman Seti**  
(Ring Set)

06-109200-20-STD  
3.160 CK KV1  
2.385 STD  
3.500 CR STD  
Goetze® LKZ-Ring®

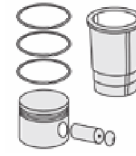


**Silindir Gömleği**  
(Liner)

14-600020-00-WH  
B : 132.910  
L : 257.500  
D : 140.740  
C : 8.250  
F : 0.750  
R : 10.700

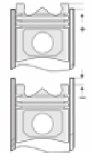


O-RING BİLGİ (O-Ring  
Information)  
24-35025-32/0  
2x 129,50\*4 FPM  
1x 123\*128\*10,7 FPM



**Silindir Kit**  
(Assembly Set)

89-109200-12-STD  
89-71899-STD A



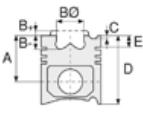
**Piston - Blok Montaj**  
Yüksekliği  
(Piston - Block  
Assembly Height)

-0,35 / 0,50

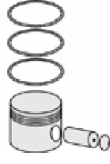




**Motor Özellikleri**  
(Engine Specifications)



**Piston Ölçüleri**  
(Piston Dimensions)



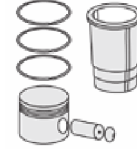
**Piston Parça No**  
(Piston Part No)



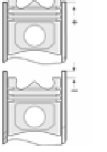
**Segman Seti**  
(Ring Set)



**Silindir Gömleği**  
(Liner)

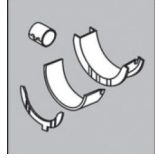


**Silindir Kit**  
(Assembly Set)



**Piston - Blok Montaj**  
**Yüksekliği**  
(Piston - Block  
Assembly Height)

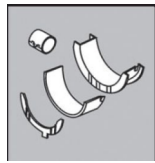
**Ana Yatak**  
(Main Bearing)



H1073/7 STD

H1280/7 STD

**Kol Yatak**  
(Connecting Rod Bearing)



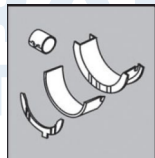
71-4214/6 STD

**Eksantrik Yatak**  
(Camshaft Bearing)



N199/7 STD

**Ay Yatak**  
(Thrust Washer)



A300/4 STD

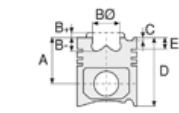




**Motor Özellikleri**  
(Engine Specifications)

İmalatçı (Manufacturer):  
Saa-Scania  
Çap (Diameter): 115  
FM Grup No: 7563

**DN9-01**  
6 Sil. Dizel 8500cc  
150 KW (204 PS)  
G92, G93, P92, P93, R92,  
R93  
1985 - 1994



**Piston Ölçüleri**  
(Piston Dimensions)

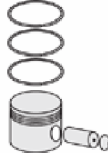
A : 87.700  
B- : 22.150  
BØ : 69.000  
BX : 4.200  
C1 : 0.300  
C2 : 0.200  
D : 139.400  
E : 21.640

Pim: 50 x 92



**Piston Özellikleri**  
(Piston Features)

Segman Taşıyıcı  
(Ring Carrier)  
Yağ Püskürtme Oyuğu  
(Oil Jet Cut-out)



**Piston Parça No**  
(Piston Part No)

87-961000-22  
87-73722-STDB



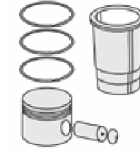
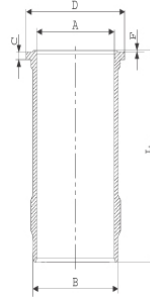
**Segman Seti**  
(Ring Set)

06-961000-80-STD  
2.385 CKP IKA  
2.385 STD  
4.747 CR STD  
Goetze® LKZ-Ring®



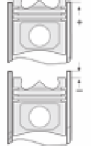
**Silindir Gömleği**  
(Liner)

14-374990-00-WH  
B : 130.000  
L : 270.500  
D : 137.300  
C : 8.200  
F : 0.800



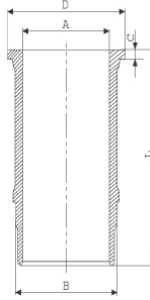
**Silindir Kit**  
(Assembly Set)

88-961000-22-STD  
88-73722-STDB



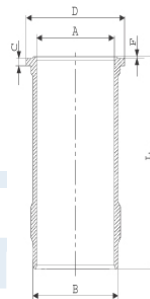
**Piston - Blok Montaj**  
**Yüksekliği**  
(Piston - Block  
Assembly Height)

14-608890-00-WH  
B : 127.900  
L : 265.600  
D : 140.820  
C : 10.260  
R : 19.000



88-961000-32-STD  
88-73722-STDC

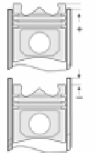
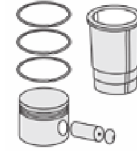
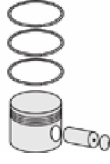
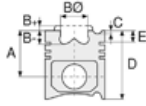
14-374990-00-WH  
B : 130.000  
L : 270.500  
D : 137.300  
C : 8.200  
F : 0.800





SAAB - SCANIA - Ø 127

06-348000-80-STD



**Motor Özellikleri**  
(Engine Specifications)

**Piston Ölçüleri**  
(Piston Dimensions)

**Piston Parça No**  
(Piston Part No)

**Segman Seti**  
(Ring Set)

**Silindir Gömleği**  
(Liner)

**Silindir Kit**  
(Assembly Set)

**Piston - Blok Montaj**  
Yüksekliği  
(Piston - Block  
Assembly Height)

İmalatçı (Manufacturer):  
SAAB-SCANIA  
Çap (Diameter): Ø 127  
FM Grup No: 7504

**D11-O1 LB24/26**  
6 Sil. Dizel 11020cc 149  
Kw (203 PS) 15:1  
LB111, LBS111, LBT111  
1977 - 1980

**D11-O2 LB20/22**  
6 Sil. Dizel 11020cc 149  
Kw (203 PS) 15:1  
LB111, LBS111, LBT111  
1977 - 1980

**D11 LB18/20/22/24/26**  
6 Sil. Dizel 11020cc 149  
Kw (203 PS) 15:1  
LB111, LBS111, LBT111  
1977 - 1980

**DS11-O1 LB21/24**  
6 Sil. Dizel 11020cc  
202,5/245 Kw  
(280/333 PS) 16:1  
Turbo  
LB111, LBS111, LBT111,  
T112E, T112H  
1977 - 1980

**DS11-O2 LB23/26**  
6 Sil. Dizel 11020cc  
202,5/245 Kw  
(280/333 PS) 16:1  
Turbo  
LB111, LBS111, LBT111,  
T112E, T112H  
1977 - 1980

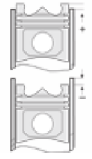
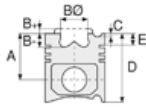
**DS11-11 LB01/2**  
6 Sil. Dizel 11020cc  
202,5/245 Kw  
(280/333 PS) 16:1  
Turbo  
K414, K414B, K420,  
K424, K425, K425B,  
K435, LB111, LBS111,  
LBT111, T112E, T112H  
1977 - 1980

**Piston Özellikleri**  
(Piston Features)

06-348000-80-STD

2.385  CK KV1  
2.385  STD  
2.385  STD  
4.747  CR STD

Goetze® LKZ-Ring®



**Motor Özellikleri**  
(Engine Specifications)

**Piston Ölçüleri**  
(Piston Dimensions)

**Piston Parça No**  
(Piston Part No)

**Segman Seti**  
(Ring Set)

**Silindir Gömleği**  
(Liner)

**Silindir Kit**  
(Assembly Set)

**Piston - Blok Montaj**  
Yüksekliği  
(Piston - Block  
Assembly Height)

**DS11-14 LO1/2/3**

6 Sil. Dizel 11020cc

202,5/245 Kw

(280/333 PS) 16:1

Turbo

G112E, G112H, G112M,

K414, K414B, K420,

K424, K425, K425B,

K435, P112E, P112H,

P112M, R112E, R112H,

R112M, T112E, T112H

1981....

**DS11-14 LO1/2/3**

6 Sil. Dizel 11020cc

202,5/245 Kw

(280/333 PS) 16:1

Turbo

G112E, G112H, G112M,

K414, K414B, K420,

K424, K425, K425B,

K435, P112E, P112H,

P112M, R112E, R112H,

R112M, T112E, T112H

1981....

**DS11-15 LO1/O2/O3**

6 Sil. Dizel 11020cc

202,5/245 Kw

(280/333 PS) 16:1

Turbo

G112E, G112H, G112M,

K414, K414B, K420,

K424, K425, K425B,

K435, P112E, P112H,

P112M, R112E, R112H,

R112M, T112E, T112H

1981....

**DS11-15 LO1/O2/O3**

6 Sil. Dizel 11020cc

202,5/245 Kw

(280/333 PS) 16:1

Turbo

G112E, G112H, G112M,

K414, K414B, K420,

K424, K425, K425B,

K435, P112E, P112H,

P112M, R112E, R112H,

R112M, T112E, T112H

1981....



SAAB-SCANIA - Ø 127

06-348000-80-STD



**Motor Özellikleri**  
(Engine Specifications)

**DS11-18 LO1/O2**

6 Sil. Dizel 11020cc

202,5/245 Kw

(280/333 PS) 16:1

Turbo

G112E, G112H, G112M,

K414, K414B, K420,

K424, K425, K425B,

K435, P112E, P112H,

P112M, R112E, R112H,

R112M, T112E, T112H

1981....

**DS11-18 LO1/O2**

6 Sil. Dizel 11020cc

202,5/245 Kw

(280/333 PS) 16:1

Turbo

G112E, G112H, G112M,

K414, K414B, K420,

K424, K425, K425B,

K435, P112E, P112H,

P112M, R112E, R112H,

R112M, T112E, T112H

1981....

**DS11 LB21**

6 Sil. Dizel 11020cc

202,5/245 Kw

(280/333 PS) 15:1

Turbo

K414, K414B, K420,

K424, K425, K425B,

K435, LB111, LBS111, LBT111

1977 - 1980

**DS11 LB23/24/26**

6 Sil. Dizel 11020cc

202,5/245 Kw

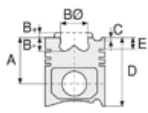
(280/333 PS) 16:1

Turbo

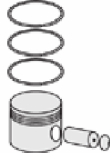
LB111, LBS111, LBT111,

T112E, T112H

1977 - 1980



**Piston Ölçüleri**  
(Piston Dimensions)



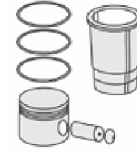
**Piston Parça No**  
(Piston Part No)



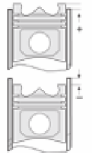
**Segman Seti**  
(Ring Set)



**Silindir Gömleği**  
(Liner)



**Silindir Kit**  
(Assembly Set)



**Piston - Blok Montaj**  
Yüksekliği  
(Piston - Block  
Assembly Height)







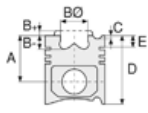
SAAB-SCANIA - Ø 127

06-348000-80-STD



**Motor Özellikleri**  
(Engine Specifications)

DSC11-01 L01/O2  
6 Sil. Dizel 11020cc  
202,5/245 Kw  
(280/333 PS)  
Turbocharged Intercooled  
G112E, G112H, G112M,  
K414, K414B, K420, K424,  
K425, K425B, K435, P112E,  
P112H, P112M, R112E, R112H,  
R112M, T112E, T112H  
1981....



**Piston Ölçüleri**  
(Piston Dimensions)



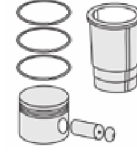
**Piston Parça No**  
(Piston Part No)



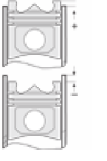
**Segman Seti**  
(Ring Set)



**Silindir Gömleği**  
(Liner)

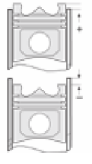
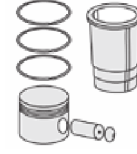
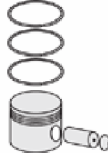
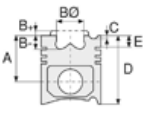


**Silindir Kit**  
(Assembly Set)



**Piston - Blok Montaj**  
Yüksekliği  
(Piston - Block  
Assembly Height)





**Motor Özellikleri**  
(Engine Specifications)

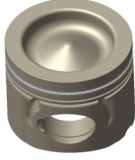
İmalatçı (Manufacturer):  
Saab-Scania  
Çap (Diameter): 127  
FM Grup No: 7576

**DI12 Euro2**  
6 Sil. Dizel 11700cc  
235 Kw (321 HP) 17:1  
ENDUSTRIYEL  
(Industrial), MARIN

**Piston Ölçüleri**  
(Piston Dimensions)

A : 85.200  
B- : 18.620  
BØ : 90.000  
D : 133.910  
E : 19.000

Pim: 54 x 106



**Piston Özellikleri**  
(Piston Features)

Segman Taşıyıcı  
(Ring Carrier)  
Yağ Püskürtme Oyuğu  
(Oil Jet Cut-out)

**Piston Parça No**  
(Piston Part No)

86-71913-STD

**Segman Seti**  
(Ring Set)

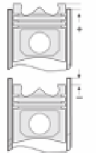
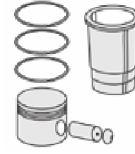
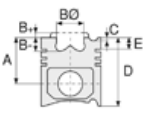
3.500  
2.400  
3.500

**Silindir Gömleği**  
(Liner)

**Silindir Kit**  
(Assembly Set)

**Piston - Blok Montaj**  
**Yüksekliği**  
(Piston - Block  
Assembly Height)





**Motor Özellikleri**  
(Engine Specifications)

İmalatçı (Manufacturer):  
Saab-Scania  
Çap (Diameter): 115  
FM Grup No: 7505

**D11**

6 Sil. Dizel 11000cc  
149/153 Kw (203/208 PS)  
15:1

Tepe segmanı trapez  
Motor No:880840-->  
L110, L111, LB110, LB111,  
LBS111, LS111, SBA111, T112E  
1975 - 1981

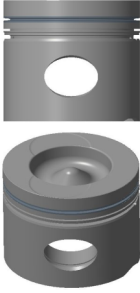
**D11.01**

6 Sil. Dizel 11018cc 149/  
153 Kw (203/208 PS) 16:1  
Tepe segmanı trapez  
Motor No:880840-->  
L110, L111, LB110, LB111,  
LBS111, LS111, SBA111, T112E  
1975 - 1981

**Piston Ölçüleri**  
(Piston Dimensions)

A : 98.760  
B - : 27.060  
BØ : 76.000  
C1 : 0.500  
D : 156.260  
E : 23.270

Pim: 50 x 107,8



**Piston Özellikleri**  
(Piston Features)

Segman Taşıyıcı  
(Ring Carrier)  
Yağ Püskürtme Oyuğu  
(Oil Jet Cut-out)  
Gözarası Konik  
(Conical Eye Gap)

**Piston Parça No**  
(Piston Part No)

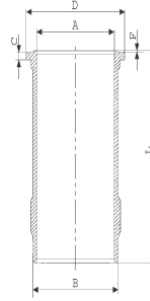
87-892400-22  
87-71901-STD A

**Segman Seti**  
(Ring Set)

06-892400-00-STD  
3.160 CR KV1  
2.385 CR STD  
4.747 CR STD  
Goetze® LKZ-Ring®

**Silindir Gömleği**  
(Liner)

14-450850-00-WH  
B : 140.000  
L : 291.000  
D : 153.800  
C : 8.200  
F : 0.800  
R : 21.000



O-RING BİLGİ (O-Ring  
Information)  
24-35025-43/0  
3x 139,5\*4 FPM

**Silindir Kit**  
(Assembly Set)

89-892400-22-STD  
89-71901-STD A

**Piston - Blok Montaj**  
**Yüksekliği**  
(Piston - Block  
Assembly Height)



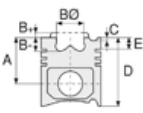


**Motor Özellikleri**  
(Engine Specifications)

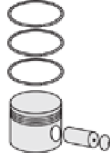
**DS9-04**  
6 Sil. Dizel 8471cc  
150 KW (204 PS )  
TURBO  
G82M, P82M

**DS9-01L01**  
6 Sil. Dizel 8471cc  
TURBO INTERCOOLED  
G92H, G92M, P92H,  
P92HB, P92M, P92MA,  
R92H, R92M

**DSC9-01L02**  
6 Sil. Dizel 8471cc  
TURBO INTERCOOLED  
G92H, G92M, P92H,  
P92HB, P92M, P92MA,  
R92H, R92M



**Piston Ölçüleri**  
(Piston Dimensions)



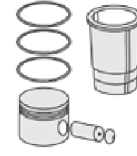
**Piston Parça No**  
(Piston Part No)



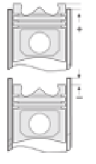
**Segman Seti**  
(Ring Set)



**Silindir Gömleği**  
(Liner)

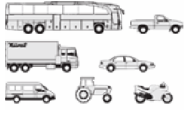


**Silindir Kit**  
(Assembly Set)



**Piston - Blok Montaj**  
**Yüksekliği**  
(Piston - Block  
Assembly Height)





**Motor Özellikleri**  
(Engine Specifications)

İmalatçı (Manufacturer):  
Saab-Scania  
Çap (Diameter): 127  
FM Grup No: 7508

**DS 11.01 DSI 11.01 /  
DS 11.111-112**

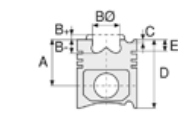
6 Sil. Dizel 11018cc  
202 Kw (275 PS) 15:1  
Turbo Tepe segmanı  
trapez  
L110S, LB110S, LBS110S,  
LS110S  
1973 - 1975

**DS 11.01/2/14/15/18  
DSC 11.01/2/4/11**

6 Sil. Dizel 11018cc  
206/245 Kw (280/333 PS)  
15:1  
Turbocharged Intercooled  
Tepe segmanı trapez  
B116, G112M, K112, L111S,  
LB111S, LBS111S, LBT111BB,  
LBT111FB, LBT111S, LS111S,  
LT111BB, LT111S, P112E,  
P112H, P112M, P112MA,  
R112, R112E, R112H, R112M,  
R112MA, SBAT111, T112E,  
T112H  
1975 - 1978

**DS 11.01/2/14/15/18  
DSC 11.01/2/4/11**

6 Sil. Dizel 11018cc  
206/245 Kw (280/333 PS)  
1  
5:1  
Turbocharged Intercooled  
Tepe segmanı trapez  
B116, G112M, K112, L111S,  
LB111S, LBS111S, LBT111BB,  
LBT111FB, LBT111S, LS111S,  
LT111BB, LT111S, P112E,  
P112H, P112M, P112MA,  
R112, R112E, R112H, R112M,  
R112MA, SBAT111, T112E,  
T112H  
1975 - 1978



**Piston Ölçüleri**  
(Piston Dimensions)

A : 98.760  
B- : 27.060  
BØ : 76.000  
C1 : 2.900  
D : 156.260  
E : 23.270

Pim: 50 x 107,8



**Piston Özellikleri**  
(Piston Features)

Segman Taşıyıcı  
(Ring Carrier)  
Yağ Püskürtme Oyuğu  
(Oil Jet Cut-out)  
Gözarası Konik  
(Conical Eye Gap)



**Piston Parça No**  
(Piston Part No)

87-892400-42  
87-71902-STDB



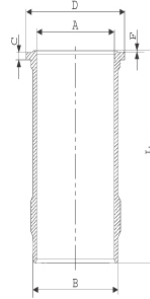
**Segman Seti**  
(Ring Set)

06-892400-00-STD  
3.160 CR KV1  
2.385 CR STD  
4.747 CR STD  
Goetze® LKZ-Ring®

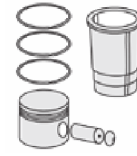


**Silindir Gömleği**  
(Liner)

14-450850-00-WH  
B : 140.000  
L : 291.000  
D : 153.800  
C : 8.200  
F : 0.800  
R : 21.000

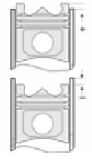


O-RING BİLGİ (O-Ring  
Information)  
24-35025-43/0  
3x 139,5\*4 FPM



**Silindir Kit**  
(Assembly Set)

89-892400-42-STD  
89-71902-STDB



**Piston - Blok Montaj**  
**Yüksekliği**  
(Piston - Block  
Assembly Height)

+0,14/+0,15

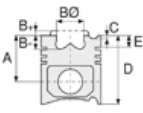


SAAB - SCANIA - Ø 127

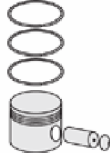
87-71902-STDB



**Motor Özellikleri**  
(Engine Specifications)



**Piston Ölçüleri**  
(Piston Dimensions)



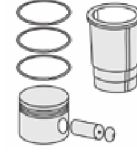
**Piston Parça No**  
(Piston Part No)



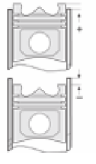
**Segman Seti**  
(Ring Set)



**Silindir Gömleği**  
(Liner)

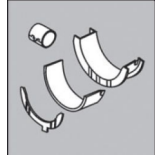


**Silindir Kit**  
(Assembly Set)



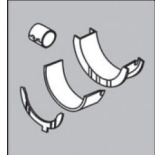
**Piston - Blok Montaj**  
**Yüksekliği**  
(Piston - Block  
Assembly Height)

**Ana Yatak**  
(Main Bearing)



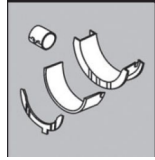
H1059/7 STD

**Kol Yatak**  
(Connecting Rod Bearing)



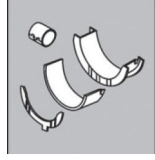
71-4237/6 STD

**Eksantrik Yatak**  
(Camshaft Bearing)



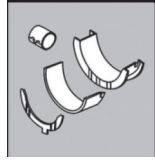
N197/4 SEMI

**Ay Yatak**  
(Thrust Washer)



A216/4 STD

**Kol Burcu**  
(Small End Bushing)



55-4240 SEMI

**Sil. Kapak. Conta**  
(Cylinder Head Gasket)



DS560  
30-028035-00





**Motor Özellikleri**  
(Engine Specifications)

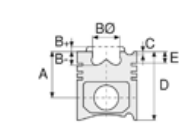
İmalatçı (Manufacturer):  
Saab-Scania  
Çap (Diameter): 127  
FM Grup No: 7507

**D11**

6 Sil. Dizel 11000cc  
149/153 Kw (203/208 PS)  
15:1  
Tepe segmanı düz  
Motor No:880840-->  
L110, L111, LB110, LB111,  
LBS111, LS111, SBA111, T112E  
1975 - 1981

**D11.01**

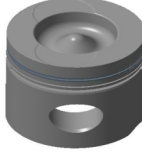
6 Sil. Dizel 11018cc  
149/153 Kw (203/208 PS)  
16:1  
Tepe segmanı düz  
Motor No:880840-->  
L110, L111, LB110, LB111,  
LBS111, LS111, SBA111, T112E  
1975 - 1981



**Piston Ölçüleri**  
(Piston Dimensions)

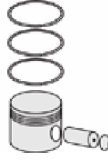
A : 98.760  
B - : 27.060  
BØ : 76.000  
C1 : 0.500  
D : 156.260  
E : 23.600

Pim: 50 x 107,8



**Piston Özellikleri**  
(Piston Features)

Segman Taşıyıcı  
(Ring Carrier)  
Yağ Püskürtme Oyuğu  
(Oil Jet Cut-out)  
Gözarası Konik  
(Conical Eye Gap)



**Piston Parça No**  
(Piston Part No)

87-990500-52  
87-71903-STD A



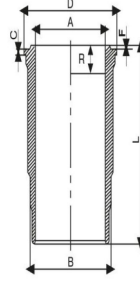
**Segman Seti**  
(Ring Set)

06-990500-80-STD  
2.385 CK KV1  
2.385 STD  
4.747 CR STD  
Goetze® LKZ-Ring®

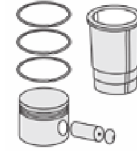


**Silindir Gömleği**  
(Liner)

14-450850-00-WH  
B : 140.000  
L : 291.000  
D : 153.800  
C : 8.200  
F : 0.800  
R : 21.000

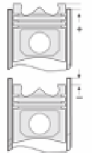


O-RING BİLGİ (O-Ring  
Information)  
24-35025-43/0  
3x 139,5\*4 FPM



**Silindir Kit**  
(Assembly Set)

89-990500-52-STD  
89-71903-STD A



**Piston - Blok Montaj**  
**Yüksekliği**  
(Piston - Block  
Assembly Height)

-0,14/+0,15





**Motor Özellikleri**  
(Engine Specifications)

İmalatçı (Manufacturer):  
Saab-Scania  
Çap (Diameter): 127  
FM Grup No: 7509

**DS 11.01 DSI 11.01**

6 Sil. Dizel 11018cc  
202 Kw (275 PS) 15:1  
Turbo Tepe segmanı düz  
L110S, LB110S, LBS110S,  
LS110S  
1973 - 1975

**DS 11.01/2/14/15/18**

**DSC 11.01/2/4/11**  
6 Sil. Dizel 11018cc  
206/245 Kw (280/333 PS)  
15:1

Turbocharged Intercooled  
Tepe segmanı düz

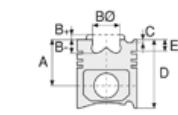
B116, G112M, K112, L111S,  
LB111S, LBS111S, LBT111BB,  
LBT111FB, LBT111S, LS111S,  
LT111BB, LT111S, P112E,  
P112H, P112M, P112MA,  
R112, R112E, R112H, R112M,  
R112MA, SBAT111, T112E,  
T112H  
1975 - 1978

**DS 11.01/2/14/15/18**

**DSC 11.01/2/4/11**  
6 Sil. Dizel 11018cc  
206/245 Kw (280/333 PS)  
15:1

Turbocharged Intercooled  
Tepe segmanı düz

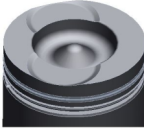
B116, G112M, K112, L111S,  
LB111S, LBS111S, LBT111BB,  
LBT111FB, LBT111S, LS111S,  
LT111BB, LT111S, P112E,  
P112H, P112M, P112MA,  
R112, R112E, R112H, R112M,  
R112MA, SBAT111, T112E,  
T112H  
1975 - 1978



**Piston Ölçüleri**  
(Piston Dimensions)

A : 98.760  
B- : 27.060  
BØ : 76.000  
C1 : 2.900  
D : 156.260  
E : 23.600

Pim: 50 x 107,8



**Piston Özellikleri**  
(Piston Features)

Segman Taşıyıcı  
(Ring Carrier)  
Yağ Püskürtme Oyuğu  
(Oil Jet Cut-out)  
Gözarası Konik  
(Conical Eye Gap)



**Piston Parça No**  
(Piston Part No)

87-990500-42  
87-71904-STDC



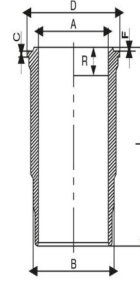
**Segman Seti**  
(Ring Set)

06-990500-80-STD  
2.385 CK KV1  
2.385 CR STD  
4.747 CR STD  
Goetze® LKZ-Ring®

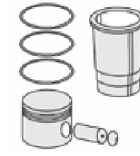


**Silindir Gömleği**  
(Liner)

14-450850-00-WH  
B : 140.000  
L : 291.000  
D : 153.800  
C : 8.200  
F : 0.800  
R : 21.000

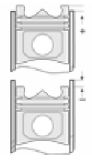


O-RING BİLGİ (O-Ring  
Information)  
24-35025-43/0  
3x 139,5\*4 FPM



**Silindir Kit**  
(Assembly Set)

89-990500-42-STD  
89-71904-STDC



**Piston - Blok Montaj**  
Yüksekliği  
(Piston - Block  
Assembly Height)

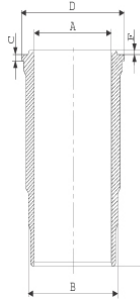
87-892500-22  
87-73728-STDA

06-892500-00-STD  
3.500 CK KV1  
2.385 CR STD  
4.747 CR STD  
Goetze® LKZ-Ring®

14-450850-00 WH  
O-RING BİLGİ (O-Ring  
Information)  
24-35025-43/0  
3x 139,5\*4 FPM

89-892500-22-STD  
89-73728-STDA

14-451320-00-WH  
B : 140.000  
L : 291.000  
D : 153.800  
C : 8.200  
F : 0.800



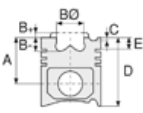
4 ADET O-RİNGLİ (With  
4 O-Rings) /  
24-35024-01/0  
3x 139,5\*4 FPM  
1x 141\*2,4 FPM



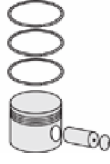




**Motor Özellikleri**  
(Engine Specifications)



**Piston Ölçüleri**  
(Piston Dimensions)



**Piston Parça No**  
(Piston Part No)

87-962000-04  
87-73728-STDB



**Segman Seti**  
(Ring Set)

06-962000-20-STD

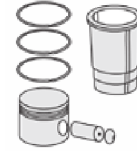
3.500  CR KV1  
2.385  STD  
4.747  CR STD

Goetze® LKZ-Ring®



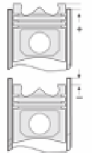
**Silindir Gömleği**  
(Liner)

14-450850-00-WH  
O-RING BİLGİ (O-Ring  
Information)  
24-35025-43/0  
3x 139,5\*4 FPM



**Silindir Kit**  
(Assembly Set)

89-962000-04-STD  
89-73728-STDB



**Piston - Blok Montaj**  
Yüksekliği  
(Piston - Block  
Assembly Height)

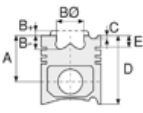
14-451320-00-WH  
4 ADET O-RİNGLİ (With  
4 O-Rings) /  
24-35024-01/0  
3x 139,5\*4 FPM  
1x 141\*2,4 FPM

89-962000-63-STD  
89-73728-STDC

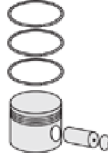




**Motor Özellikleri**  
(Engine Specifications)



**Piston Ölçüleri**  
(Piston Dimensions)



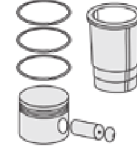
**Piston Parça No**  
(Piston Part No)



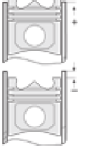
**Segman Seti**  
(Ring Set)



**Silindir Gömleği**  
(Liner)

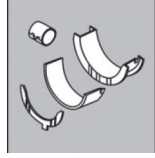


**Silindir Kit**  
(Assembly Set)



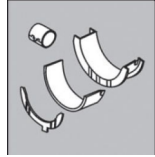
**Piston - Blok Montaj**  
**Yüksekliği**  
(Piston - Block  
Assembly Height)

**Ana Yatak**  
(Main Bearing)



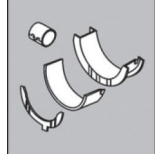
H1059/7 STD

**Kol Yatak**  
(Connecting Rod Bearing)



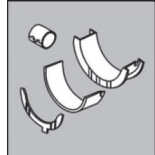
71-4237/6 STD

**Eksantrik Yatak**  
(Camshaft Bearing)



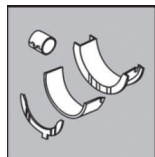
N197/4 SEMI

**Ay Yatak**  
(Thrust Washer)



A216/4 STD

**Kol Burcu**  
(Small End Bushing)



55-4240 SEMI

**Sil. Kapak. Conta**  
(Cylinder Head Gasket)



DB130

DS560





**Motor Özellikleri**  
(Engine Specifications)

İmalatçı (Manufacturer):  
Saab-Scania  
Çap (Diameter): 127  
FM Grup No: 7510

**DS 14 - DS 14.141 / 142**

8 Sil. Dizel 14200cc  
257 Kw (350 PS) 15:1  
Turbo  
L140, LB140, LBS140,  
LBT140, LS140, LT145  
1969 - 1976

**DS 14.01/02 DSI 14.01**

8 Sil. Dizel 14200cc  
309/316 Kw (420/430 PS)  
15,5:1  
Turbocharged Intercooled  
146, L141S, LB141S,  
LBS141S, LBT141S, LS141S,  
R142E, R142H, R142M,  
R142MA, T112E, T142H  
1983....

**DS 14.01/02 DSI 14.01**

8 Sil. Dizel 14200cc 3  
09/316 Kw (420/430 PS)  
15,5:1  
Turbocharged Intercooled  
146, L141S, LB141S,  
LBS141S, LBT141S, LS141S,  
R142E, R142H, R142M,  
R142MA, T112E, T142H  
1983....

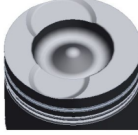
**DS 14.06**

8 Sil. Dizel 14200cc  
276/291 Kw (375/396 PS)  
15,5:1  
Turbo  
141, 142, 146  
1977....

**Piston Ölçüleri**  
(Piston Dimensions)

A : 94.670  
B- : 26.200  
BØ : 75.500  
C1 : 2.920  
D : 145.670  
E : 23.330

Pim: 50 x 107,8



**Piston Özellikleri**  
(Piston Features)

Segman Taşıyıcı  
(Ring Carrier)  
Yağ Püskürtme Oyuğu  
(Oil Jet Cut-out)  
Gözarası Konik  
(Conical Eye Gap)

**Piston Parça No**  
(Piston Part No)

87-892400-02  
87-71905-STDA

87-892500-02  
87-73729-STDA

87-962000-34  
87-73729-STDB

**Segman Seti**  
(Ring Set)

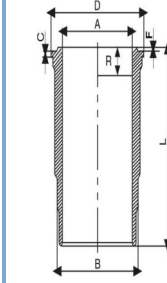
06-892400-00-STD  
3.160 CK KV1  
2.385 CR STD  
4.747 CR STD  
Goetze® LKZ-Ring®

06-892500-00-STD  
3.500 CK KV1  
2.385 CR STD  
4.747 CR STD  
Goetze® LKZ-Ring®

06-962000-20-STD  
3.500 CR KV1  
2.385 STD  
4.747 CR STD  
Goetze® LKZ-Ring®

**Silindir Gömleği**  
(Liner)

14-671680-00-WH  
B : 140.000  
L : 276.000  
D : 156.000  
C : 10.100  
F : 0.400  
R : 21.500



**O-RING BİLGİ (O-Ring Information)**

24-35047-90/O  
2x 140\*4 FPM 70  
1x 138\*143\*11  
1x 1X TOMBAK  
148,1\*153,7\*

114-671680-00 WH  
O-RİNG BİLGİ  
24-35047-90/O  
2x 140\*4 FPM 70  
1x 138\*143\*11  
1x 1X TOMBAK  
148,1\*153,7\*

14-671680-00 WH  
O-RİNG BİLGİ  
24-35047-90/O  
2x 140\*4 FPM 70  
1x 138\*143\*11  
1x 1X TOMBAK  
148,1\*153,7\*

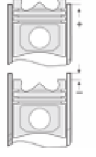
**Silindir Kit**  
(Assembly Set)

89-892400-02-STD  
89-71905-STDA

89-892500-02-STD  
89-73729-STDA

89-962000-34-STD  
89-73729-STDB

**Piston - Blok Montaj**  
Yüksekliği  
(Piston - Block  
Assembly Height)

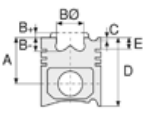




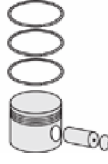
**Motor Özellikleri**  
(Engine Specifications)

**DSC 14.01/02**  
8 Sil. Dizel 14181cc  
309/316 Kw (420/430 PS)  
15,5:1  
Turbocharged Intercooled  
146, L141S, LB141S,  
LBS141S, LBT141S, LS141S,  
R142E, R142H, R142M,  
R142MA, T112E, T142H  
1983....

**DSC 14.01/02**  
8 Sil. Dizel 14181cc  
309/316 Kw (420/430 PS)  
15,5:1  
Turbocharged Intercooled  
146, L141S, LB141S,  
LBS141S, LBT141S, LS141S,  
R142E, R142H, R142M,  
R142MA, T112E, T142H  
1983....



**Piston Ölçüleri**  
(Piston Dimensions)



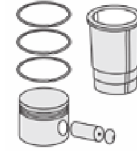
**Piston Parça No**  
(Piston Part No)



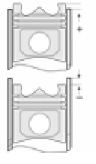
**Segman Seti**  
(Ring Set)



**Silindir Gömleği**  
(Liner)

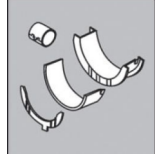


**Silindir Kit**  
(Assembly Set)



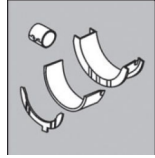
**Piston - Blok Montaj**  
Yüksekliği  
(Piston - Block  
Assembly Height)

**Ana Yatak**  
(Main Bearing)



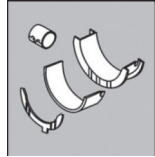
H1060/5 STD

**Kol Yatak**  
(Connecting Rod Bearing)



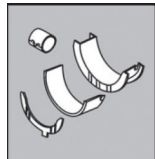
71-4249/8 STD

**Ay Yatak**  
(Thrust Washer)



A216/4 STD

**Kol Burcu**  
(Small End Bushing)



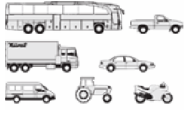
55-4240 SEMI

**Sil. Kapak. Conta**  
(Cylinder Head Gasket)



DB140





**Motor Özellikleri**  
(Engine Specifications)

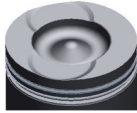
İmalatçı (Manufacturer):  
Saab-Scania  
Çap (Diameter): 127  
FM Grup No: 7511

DS 11.34/73 -  
DS 11-113 -  
DSC 11.12/13/16/17/18  
6 Sil. Dizel 11018cc  
230/265 Kw (313/360 PS)  
16:1  
Turbocharged Intercooled  
M113, P113, R113, T113  
1987....

**Piston Ölçüleri**  
(Piston Dimensions)

A : 98.760  
B- : 24.500  
BØ : 75.500  
C1 : 2.960  
D : 156.260  
E : 23.400

Pim: 50 x 107,8



**Piston Özellikleri**  
(Piston Features)

Segman Taşıyıcı  
(Ring Carrier)  
Gözarası Konik  
(Conical Eye Gap)



**Piston Parça No**  
(Piston Part No)

87-892500-33  
87-71906-STDIC  
0,20 mm Kısa (Short)  
87-892500-32  
87-71906-STDC



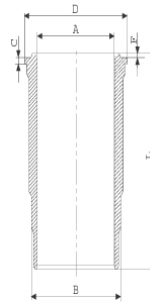
**Segman Seti**  
(Ring Set)

06-892500-00-STD  
3.500 CK KV1  
2.385 CR STD  
4.747 CR STD  
Goetze® LKZ-Ring®

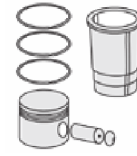


**Silindir Gömleği**  
(Liner)

14-451320-00-WH  
B : 140.000  
L : 291.000  
D : 153.800  
C : 8.200  
F : 0.800

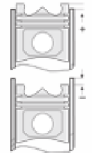


4 ADET O-RİNGLİ (With  
4 O-Rings) /  
24-35024-01/0  
3x 139,5\*4 FPM  
1x 141\*2,4 FPM



**Silindir Kit**  
(Assembly Set)

89-892500-32-STD  
89-71906-STDC



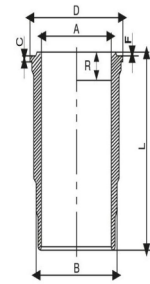
**Piston - Blok Montaj**  
Yüksekliği  
(Piston - Block  
Assembly Height)

- 0,14 / + 0,15

87-962000-12  
87-71906-STDA

06-962000-20-STD  
3.500 CK KV1  
2.385 CR STD  
4.747 CR STD  
Goetze® LKZ-Ring®

14-450850-00-WH  
B : 140.000  
L : 291.000  
D : 153.800  
C : 8.200  
F : 0.800  
R : 21.000



O-RING BİLGİ (O-Ring  
Information)  
24-35025-43/0  
3x 139,5\*4 FPM

89-962000-12-STD  
89-71906-STDA

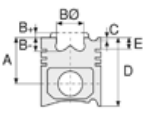
14-451320-00-WH  
4 ADET O-RİNGLİ (With  
4 O-Rings) /  
24-35024-01/0  
3x 139,5\*4 FPM  
1x 141\*2,4 FPM

89-962000-14-STD  
89-71906-STDB

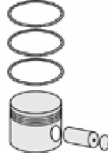




Motor Özellikleri  
(Engine Specifications)



Piston Ölçüleri  
(Piston Dimensions)



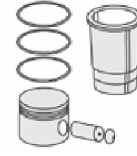
Piston Parça No  
(Piston Part No)



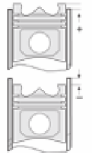
Segman Seti  
(Ring Set)



Silindir Gömleği  
(Liner)

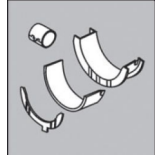


Silindir Kit  
(Assembly Set)



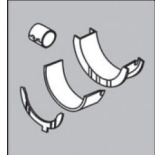
Piston - Blok Montaj  
Yüksekliği  
(Piston - Block  
Assembly Height)

**ANA YATAK  
(MAIN BEARING)**



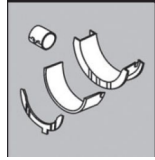
H1059/7 STD

**KOL YATAK  
(ARM BED)**



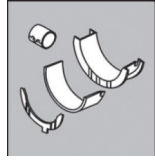
71-4237/6 STD

**EKSANTRİK YATAK  
(ECCENTRIC BEARING)**



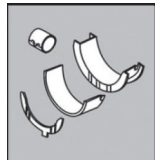
N197/4 SEMI

**AY YATAK  
(THRUST WASHER)**



A216/4 STD

**KOL BURCU  
(SMALL END BUSH)**



55-4240 SEMI

**SİL. KAPAK. CONTA  
(CYLINDER HEAD GASKET)**



DS560

DS561



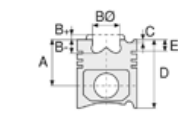


**Motor Özellikleri**  
(Engine Specifications)

İmalatçı (Manufacturer):  
Saab-Scania  
Çap (Diameter): 127  
FM Grup No: 7512

**DSC 14.09/16 EURO1**

8 Sil. Dizel 14181cc  
368 Kw (500 PS) 17:1  
Turbocharged Intercooled  
R143, T143  
1993....



**Piston Ölçüleri**  
(Piston Dimensions)

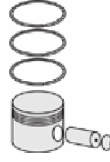
A : 94.670  
B - : 15.060  
BØ : 89.400  
C1 : 2.920  
D : 146.670  
E : 14.100

Pim: 50 x 107,8



**Piston Özellikleri**  
(Piston Features)

Segman Taşıyıcı  
(Ring Carrier)  
Sert Anotlama  
(Hard Anodizing)  
Soğutma Kanallı  
(Coolin Gallery)  
Yağ Püskürtme Oyuğu  
(Oil Jet Cut-out)  
Gözarası Konik  
(Conical Eye Gap)



**Piston Parça No**  
(Piston Part No)

87-962000-32  
87-71907-STD A



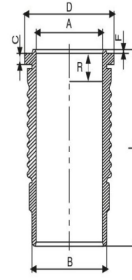
**Segman Seti**  
(Ring Set)

06-962000-20-STD  
3.500 CK KV1  
2.385 CR STD  
4.747 CR STD  
Goetze® LKZ-Ring®

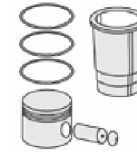


**Silindir Gömleği**  
(Liner)

14-679600-00-WH  
B : 140.000  
L : 276.000  
D : 156.000  
C : 10.050  
F : 0.400  
R : 11.150

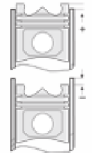


O-RING BİLGİ (O-Ring  
Information)  
24-35025-42/0  
2x 139,5\*4 FPM  
1x 138\*143\*11 FPM



**Silindir Kit**  
(Assembly Set)

89-962000-32-STD  
89-71907-STD A



**Piston - Blok Montaj**  
Yüksekliği  
(Piston - Block  
Assembly Height)

- 0,16 / - 0,54

87-892500-42  
87-71907-STD B

06-892500-00-STD  
3.500 CK KV1  
2.385 CR STD  
4.747 CR STD  
Goetze® LKZ-Ring®

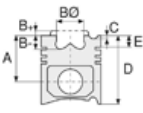
14-679600-00 WH  
O-RING BİLGİ (O-Ring  
Information)  
24-35025-42/0  
2x 139,5\*4 FPM  
1x 138\*143\*11 FPM

89-892500-42-STD  
89-71907-STD B

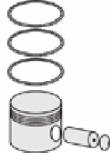




**Motor Özellikleri**  
(Engine Specifications)



**Piston Ölçüleri**  
(Piston Dimensions)



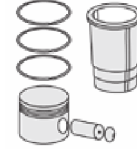
**Piston Parça No**  
(Piston Part No)



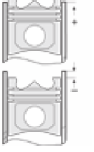
**Segman Seti**  
(Ring Set)



**Silindir Gömleği**  
(Liner)

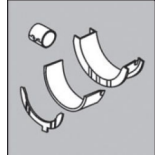


**Silindir Kit**  
(Assembly Set)



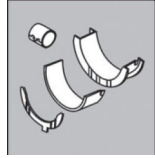
**Piston - Blok Montaj**  
**Yüksekliği**  
(Piston - Block  
Assembly Height)

**ANA YATAK**  
(MAIN BEARING)



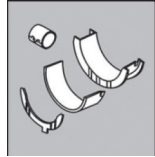
H1060/5 STD

**KOL YATAK**  
(ARM BED)



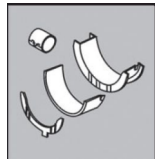
71-4249/8 STD

**AY YATAK**  
(THRUST WASHER)



A216/4 STD

**KOL BURCU**  
(SMALL END BUSH)



55-4240 SEMI

**SİL. KAPAK. CONTA**  
(CYLINDER HEAD GASKET)



DV270



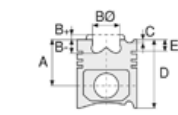




**Motor Özellikleri**  
(Engine Specifications)

İmalatçı (Manufacturer):  
Saab-Scania  
Çap (Diameter): 127  
FM Grup No: 7513

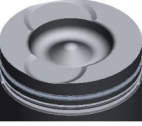
**DSC 14.05/06**  
8 Sil. Dizel 14181cc  
290/309 Kw (394/  
420 PS) 16:1  
Turbocharged Intercooled  
R142, T142  
1986....



**Piston Ölçüleri**  
(Piston Dimensions)

A : 94.670  
B- : 24.000  
BØ : 75.100  
C1 : 2.920  
D : 146.670  
E : 23.250

Pim: 50 x 107,8



**Piston Özellikleri**  
(Piston Features)

Segman Taşıyıcı  
(Ring Carrier)  
Yağ Püskürtme Oyuğu  
(Oil Jet Cut-out)  
Gözarası Konik  
(Conical Eye Gap)



**Piston Parça No**  
(Piston Part No)

87-962000-43  
87-71908-STDA



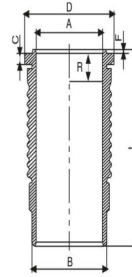
**Segman Seti**  
(Ring Set)

06-962000-20-STD  
3.500 CR KV1  
2.385 STD  
4.747 CR STD  
Goetze® LKZ-Ring®

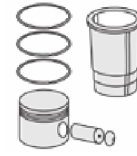


**Silindir Gömleği**  
(Liner)

14-671680-00-WH  
B : 140.000  
L : 276.000  
D : 156.000  
C : 10.100  
F : 0.400  
R : 21.500

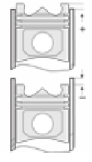


O-RING BİLGİ (O-Ring  
Information)  
24-35047-90/O  
2x 140\*4 FPM 70  
1x 138\*143\*11  
1x 1X TOMBAK  
148,1\*153,7\*



**Silindir Kit**  
(Assembly Set)

89-962000-43-STD  
89-71908-STDA



**Piston - Blok Montaj**  
Yüksekliği  
(Piston - Block  
Assembly Height)

- 0,16 / - 0,54





Motor Özellikleri  
(Engine Specifications)



Piston Ölçüleri  
(Piston Dimensions)



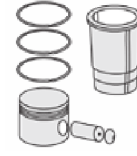
Piston Parça No  
(Piston Part No)



Segman Seti  
(Ring Set)



Silindir Gömleği  
(Liner)

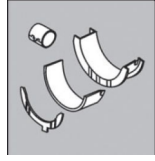


Silindir Kit  
(Assembly Set)



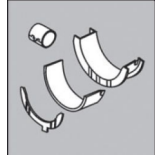
Piston - Blok Montaj  
Yüksekliği  
(Piston - Block  
Assembly Height)

ANA YATAK  
(MAIN BEARING)



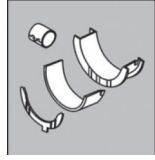
H1060/5 STD

KOL YATAK  
(ARM BED)



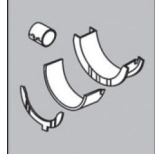
71-4249/8 STD

EKSANTRİK YATAK  
(ECCENTRIC BEARING)



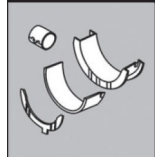
N197/4 SEMI

AY YATAK  
(THRUST WASHER)



A216/4 STD

KOL BURCU  
(SMALL END BUSH)



55-4240 SEMI

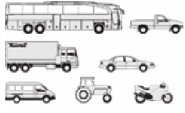
SİL. KAPAK. CONTA  
(CYLINDER HEAD GASKET)



DB140

DV270





**Motor Özellikleri**  
(Engine Specifications)

İmalatçı (Manufacturer):  
Saab-Scania  
Çap (Diameter): 127  
FM Grup No: 7514

**DSC 11.21/23/35/36/  
71/75**

6 Sil. Dizel 11018cc  
235/266 Kw (320/362 PS)  
17:1  
Turbocharged Intercooled  
M113, P113, R113, T113  
1991 - 1994

**Piston Ölçüleri**  
(Piston Dimensions)

A : 98.760  
B- : 16.520  
BØ : 89.450  
C1 : 2.960  
D : 156.260  
E : 14.000

Pim: 50 x 107,8



**Piston Özellikleri**  
(Piston Features)

Segman Taşıyıcı  
(Ring Carrier)  
Yağ Püskürtme Oyuğu  
(Oil Jet Cut-out)  
Gözarası Konik  
(Conical Eye Gap)



**Piston Parça No**  
(Piston Part No)

87-962000-72  
87-71909-STDC



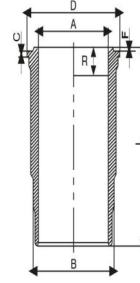
**Segman Seti**  
(Ring Set)

06-962000-20-STD  
3.500 CR KV1  
2.385 STD  
4.747 CR STD  
Goetze® LKZ-Ring®



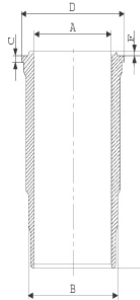
**Silindir Gömleği**  
(Liner)

14-450040-00-WH  
B : 140.000  
L : 291.000  
D : 154.000  
C : 7.940  
F : 0.900  
R : 12.400

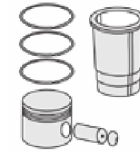


O-RING BİLGİ (O-Ring  
Information)  
24-35025-43/0  
3x 139,5\*4 FPM

14-450110-00-WH  
B : 140.000  
L : 291.000  
D : 153.750  
C : 7.930  
F : 0.900  
R : 13.200

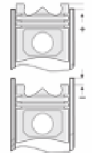


O-RİNG BİLGİ (O-Ring  
Information)  
24-35025-42/0  
2x 139,5\*4 FPM  
1x 138\*143\*11 FPM



**Silindir Kit**  
(Assembly Set)

89-962000-72-STD  
89-71909-STDC

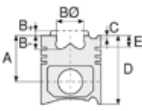


**Piston - Blok Montaj**  
Yüksekliği  
(Piston - Block  
Assembly Height)

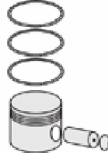




**Motor Özellikleri**  
(Engine Specifications)



**Piston Ölçüleri**  
(Piston Dimensions)



**Piston Parça No**  
(Piston Part No)

87-892500-62  
87-71909-STD



**Segman Seti**  
(Ring Set)

06-892500-00-STD

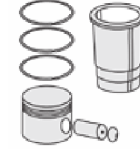
3.500  CK KV1  
2.385  CR STD  
4.747  CR STD

Goetze® LKZ-Ring®



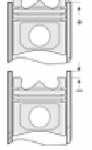
**Silindir Gömleği**  
(Liner)

14-450040-00-WH  
O-RING BİLGİ (O-Ring  
Information)  
24-35025-43/0  
3x 139,5\*4 FPM



**Silindir Kit**  
(Assembly Set)

89-892500-62-STD  
89-71909-STD



**Piston - Blok Montaj**  
Yüksekliği  
(Piston - Block  
Assembly Height)

14-451450-00-WH  
B : 139.500  
L : 291.000  
D : 153.800  
C : 7.900  
F : 0.800  
R : 11.500

89-892500-12-STD  
89-71909-STDK

14-450110-00-WH  
O-RİNG BİLGİ (O-Ring  
Information)  
24-35025-42/0  
2x 139,5\*4 FPM  
1x 138\*143\*11 FPM

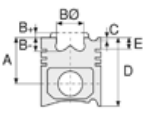
89-892500-52-STD  
89-71909-STDH

14-451450-00-WH

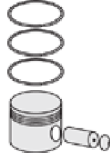




**Motor Özellikleri**  
(Engine Specifications)



**Piston Ölçüleri**  
(Piston Dimensions)



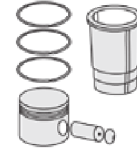
**Piston Parça No**  
(Piston Part No)



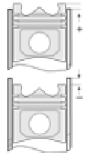
**Segman Seti**  
(Ring Set)



**Silindir Gömleği**  
(Liner)

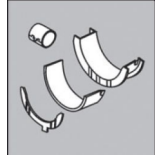


**Silindir Kit**  
(Assembly Set)



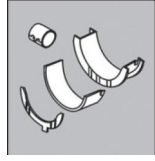
**Piston - Blok Montaj**  
**Yüksekliği**  
(Piston - Block  
Assembly Height)

**ANA YATAK**  
(MAIN BEARING)



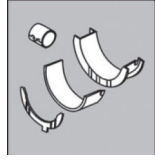
H1059/7 STD

**KOL YATAK**  
(ARM BED)



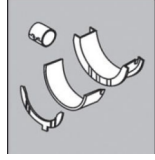
71-4237/6 STD

**EKSANTRİK YATAK**  
(ECCENTRIC BEARING)



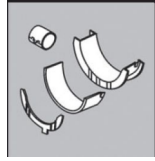
N197/4 SEMI

**AY YATAK**  
(THRUST WASHER)



A216/4 STD

**KOL BURCU**  
(SMALL END BUSH)



55-4240 SEMI

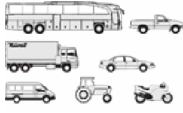
**SİL. KAPAK. CONTA**  
(CYLINDER HEAD GASKET)



DS560

DS561

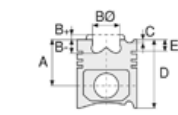




**Motor Özellikleri**  
(Engine Specifications)

İmalatçı (Manufacturer):  
SAAB - SCANIA  
Çap (Diameter): 127  
FM Grup No: 7541

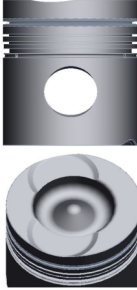
**DS11**  
6 Sil. Dizel 11020cc  
AGRICULTURAL,  
INDUSTRIAL  
1978....



**Piston Ölçüleri**  
(Piston Dimensions)

A : 98.760  
B- : 25.400  
BØ : 76.000  
C1 : 3.000  
D : 156.260  
E : 23.400

Pim: 50 x 107,92



**Piston Özellikleri**  
(Piston Features)

Segman Taşıyıcı  
(Ring Carrier)  
Yağ Püskürtme Oyuğu  
(Oil Jet Cut-out)  
Gözarası Konik  
(Conical Eye Gap)



**Piston Parça No**  
(Piston Part No)

87-526900-02  
87-71910-STD



**Segman Seti**  
(Ring Set)

06-526900-00-STD

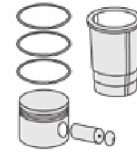
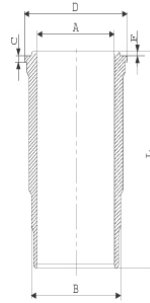
3.175  KVI  
2.381  STD  
2.381  STD  
4.762  STD



**Silindir Gömleği**  
(Liner)

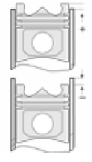
14-458190-00-WH

B : 139.930  
L : 291.000  
D : 153.800  
C : 7.940  
F : 0.800  
R : 21.600



**Silindir Kit**  
(Assembly Set)

89-962000-72-STD  
89-71909-STD



**Piston - Blok Montaj**  
Yüksekliği  
(Piston - Block  
Assembly Height)





**Motor Özellikleri**  
(Engine Specifications)

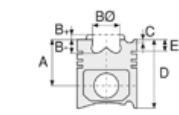
İmalatçı (Manufacturer):  
Saab-Scania  
Çap (Diameter): 127  
FM Grup No: 7547

**DSC14-03**

8 Sil. Dizel 14200cc  
320-337-346 Kw (435-  
458-470 PS) 16:1  
V8 TURBO INTERCOOLED  
R 143L, R 143MA, R 143R,  
T 143  
1988....

**DSC14-04**

8 Sil. Dizel 14200cc  
320-337-346Kw (435-  
458-470 PS) 16:1  
V8 TURBO  
INTERCOOLED  
R 143L, R 143R, T 143  
1988....



**Piston Ölçüleri**  
(Piston Dimensions)

A : 94.670  
B - : 23.850  
BØ : 75.000  
C1 : 2.820  
D : 146.670  
E : 14.100

Pim: 50 x 107,92



**Piston Özellikleri**  
(Piston Features)

Segman Taşıyıcı  
(Ring Carrier)  
Sert Anotlama  
(Hard Anodizing)  
Soğutma Kanallı  
(Coolin Gallery)  
Yağ Püskürtme Oyuğu  
(Oil Jet Cut-out)  
Gözarası Konik  
(Conical Eye Gap)



**Piston Parça No**  
(Piston Part No)

87-962000-83  
87-71912-STD



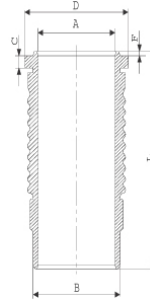
**Segman Seti**  
(Ring Set)

06-962000-20-STD  
3.500 CR KV1  
2.385 STD  
4.747 CR STD  
Goetze® LKZ-Ring®



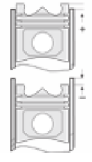
**Silindir Gömleği**  
(Liner)

14-679320-00-WH  
B : 140.000  
L : 275.250  
D : 156.000  
C : 10.090  
F : 0.400  
R : 12.000



**Silindir Kit**  
(Assembly Set)

88-962000-83-STD  
88-71912-STD

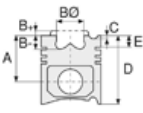


**Piston - Blok Montaj**  
Yüksekliği  
(Piston - Block  
Assembly Height)

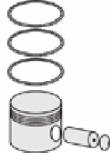




**Motor Özellikleri**  
(Engine Specifications)



**Piston Ölçüleri**  
(Piston Dimensions)



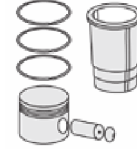
**Piston Parça No**  
(Piston Part No)



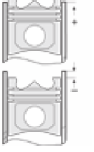
**Segman Seti**  
(Ring Set)



**Silindir Gömleği**  
(Liner)

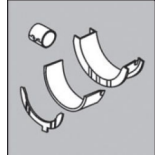


**Silindir Kit**  
(Assembly Set)



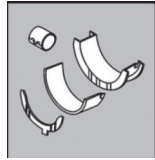
**Piston - Blok Montaj**  
Yüksekliği  
(Piston - Block  
Assembly Height)

**ANA YATAK**  
(MAIN BEARING)



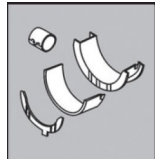
H1060/5 STD

**KOL YATAK**  
(ARM BED)



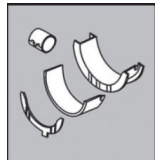
71-4249/8 STD

**AY YATAK**  
(THRUST WASHER)



A216/4 STD

**KOL BURCU**  
(SMALL END BUSH)



55-4240 SEMI

**SİL. KAPAK. CONTA**  
(CYLINDER HEAD GASKET)



DB140

DV270







**Motor Özellikleri**  
(Engine Specifications)

İmalatçı (Manufacturer):  
SAAB SCANIA  
Çap (Diameter): Ø 127  
FM Grup No: 7549

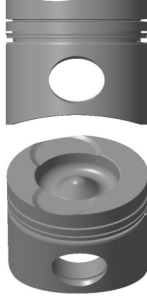
**DSC14**

8 Sil. Dizel 14181cc 15,5:1  
TURBO İNTERCOOLED  
L141S, LB141S, LBS141S,  
LBT141S, LT146, RM142H,  
RM142M, T142  
1977....

**Piston Ölçüleri**  
(Piston Dimensions)

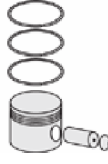
A : 94.670  
B- : 26.200  
BØ : 75.100  
D : 146.670  
E : 23.400

Pim: 50 x 107,8



**Piston Özellikleri**  
(Piston Features)

Segman Taşıyıcı  
(Ring Carrier)  
Yağ Püskürtme Oyuğu  
(Oil Jet Cut-out)  
Gözarası Konik  
(Conical Eye Gap)



**Piston Parça No**  
(Piston Part No)

87-892400-62  
87-71915-STDA



**Segman Seti**  
(Ring Set)

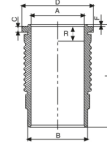
06-892400-00-STD  
3.160 CK KV1  
2.385 CR STD  
4.747 CR STD

Goetze® LKZ-Ring®

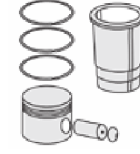


**Silindir Gömleği**  
(Liner)

14-671680-00-WH  
B : 140.000  
L : 276.000  
D : 156.000  
C : 10.100  
F : 0.400  
R : 21.500

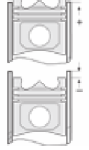


O-RING Bilgi  
(O-RING Information)  
24-35047-90/O  
2x 140\*4 FPM 70  
1x 138\*143\*11  
1x 1X TOMBAK  
148,1\*153,7\*



**Silindir Kit**  
(Assembly Set)

89-892400-62-STD  
89-71915-STDA



**Piston - Blok Montaj**  
Yüksekliği  
(Piston - Block  
Assembly Height)





**Motor Özellikleri**  
(Engine Specifications)

İmalatçı (Manufacturer):  
SAAB SCANIA  
Çap (Diameter): Ø 127  
FM Grup No: 7542

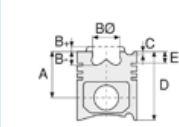
**DS11-71C**  
6 Sil. Dizel 11020cc  
TURBO  
N113CLB, N113CRB  
1990 - 1998

**DSC11-16B01**  
6 Sil. Dizel 11020cc  
Endüstriyel (Industrial)  
1982 - 1998

**DSC11-16B02**  
6 Sil. Dizel 11020cc  
Endüstriyel (Industrial)  
1982 - 1998

**DSC11-18B01**  
6 Sil. Dizel 11020cc  
Endüstriyel (Industrial)  
1982 - 1998

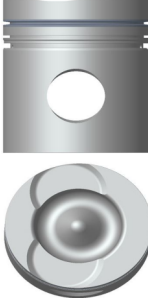
**DS11-71C**  
6 Sil. Dizel 11020cc  
N113CLB  
1990 - 1998



**Piston Ölçüleri**  
(Piston Dimensions)

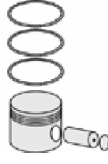
A : 98.760  
B- : 24.500  
BØ : 76.000  
D : 156.260  
E : 23.300

Pim: 50 x 107,92



**Piston Özellikleri**  
(Piston Features)

Segman Taşıyıcı  
(Ring Carrier)  
Gözarası Konik  
(Conical Eye Gap)



**Piston Parça No**  
(Piston Part No)

87-962000-94  
87-71916-STD



**Segman Seti**  
(Ring Set)

06-962000-20-STD

3.500 CR KV1  
2.385 STD  
4.747 CR STD

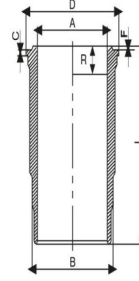
Goetze® LKZ-Ring®



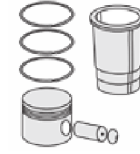
**Silindir Gömleği**  
(Liner)

14-450850-00-WH

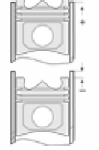
B : 140.000  
L : 291.000  
D : 153.800  
C : 8.200  
F : 0.800  
R : 21.000



O-RING Bilgi  
(O-RING Information)  
24-35025-43/O  
3x 139,5\*4 FPM



**Silindir Kit**  
(Assembly Set)



**Piston - Blok Montaj**  
Yüksekliği  
(Piston - Block  
Assembly Height)





**Motor Özellikleri**  
(Engine Specifications)

İmalatçı (Manufacturer):  
SAAB SCANIA  
Çap (Diameter): Ø 127  
FM Grup No: 7580

**SG9 A280**  
6 Sil. CNG 8974cc 200 HP  
OSG  
2008....

**Piston Ölçüleri**  
(Piston Dimensions)

A : 92.040  
B - : 27.350  
BØ : 92.650  
D : 136.040  
E : 14.200

Pim: 54 x 106



**Piston Özellikleri**  
(Piston Features)

Segman Taşıyıcı  
(Ring Carrier)  
Yağ Püskürtme Oyuğu  
(Oil Jet Cut-out)  
Burçlu Piston  
(Bushing Piston)  
Gözarası Konik  
(Conical Eye Gap)



**Piston Parça No**  
(Piston Part No)

87-892350-72  
87-73727-STD



**Segman Seti**  
(Ring Set)

06-892350-20-STD

3.500  CK KV1  
2.385  GOE  
3.500  CR STD

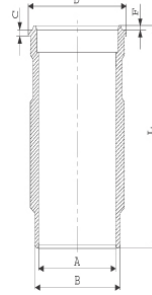
Yağ Segmanı Matkap  
Delik / Goetze®  
LKZ-Ring® (Oil Ring  
Drill Hole / Goetze®  
LKZ-Ring®)



**Silindir Gömleği**  
(Liner)

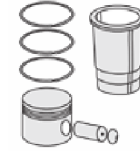
15-570070-00-WH

B : 140.000  
L : 270.000  
D : 151.000  
C : 194.270  
F : 0.400  
R : 12.000



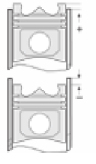
Kurum Giderme Ringli /  
O-RING Bilgi  
(With Soot Removal  
Ring / O-RING  
Information)  
24-35025-43/O  
3x 139,5\*4 FPM

15-570070-00-WH  
Kurum Giderme Ringli /  
O-RING Bilgi  
(With Soot Removal  
Ring / O-RING  
Information)  
24-35046-60/O  
1x147,5\* EPDM PEROX  
1x138\*144,75\*4.6 FPM



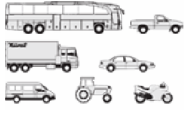
**Silindir Kit**  
(Assembly Set)

89-892350-72-STD  
89-73727-STD



**Piston - Blok Montaj**  
Yüksekliği  
(Piston - Block  
Assembly Height)

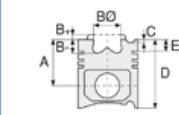




**Motor Özellikleri**  
(Engine Specifications)

İmalatçı (Manufacturer):  
SAAB SCANIA  
Çap (Diameter): Ø 127  
FM Grup No: 7557

**DSC 11**  
6 Sil. Dizel 11020cc  
220Kw ( 299 PS ) 15:1  
TURBO INTERCOOLED  
Endüstriyel (Industrial)  
1993....



**Piston Ölçüleri**  
(Piston Dimensions)

A : 98.760  
B - : 19.800  
BØ : 89.600  
C1 : 3.000  
D : 156.260  
E : 23.200

Pim: 50 x 107,8



**Piston Özellikleri**  
(Piston Features)

Segman Taşıyıcı  
(Ring Carrier)  
Sert Anotlama  
(Hard Anodizing)  
Yağ Püskürtme Oyuğu  
(Oil Jet Cut-out)  
Gözarası Konik  
(Conical Eye Gap)



**Piston Parça No**  
(Piston Part No)

87-962000-73  
87-73730-STDA



**Segman Seti**  
(Ring Set)

06-962000-20-STD

3.500 CR KVI  
2.385 STD  
4.747 CR STD

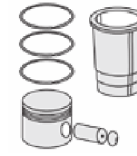
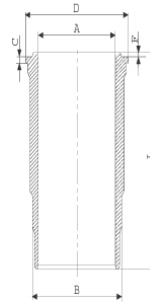
Goetze® LKZ-Ring®



**Silindir Gömleği**  
(Liner)

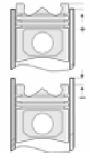
14-450390-00-WH

B : 140.000  
L : 291.000  
D : 153.700  
C : 7.900  
F : 0.800  
R : 21.950



**Silindir Kit**  
(Assembly Set)

88-962000-73-STD  
88-73730-STDA

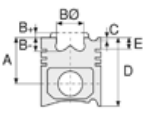


**Piston - Blok Montaj**  
Yüksekliği  
(Piston - Block  
Assembly Height)

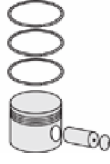




Motor Özellikleri  
(Engine Specifications)



Piston Ölçüleri  
(Piston Dimensions)



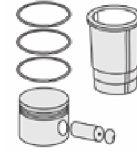
Piston Parça No  
(Piston Part No)



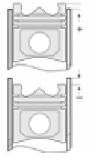
Segman Seti  
(Ring Set)



Silindir Gömleği  
(Liner)

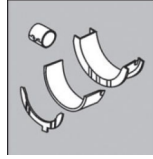


Silindir Kit  
(Assembly Set)



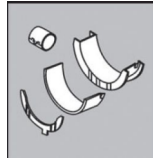
Piston - Blok Montaj  
Yüksekliği  
(Piston - Block  
Assembly Height)

Ana Yatak  
(Main Bearing)



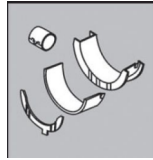
H1059/7 STD

Kol Yatak  
(Connecting Rod Bearing)



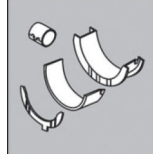
71-4237/6 STD

Eksantrik Yatak  
(Camshaft Bearing)



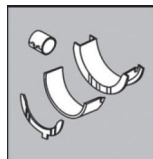
N197/4 SEMI

Ay Yatak  
(Thrust Washer)



A216/4 STD

Kol Burcu  
(Small End Bushing)



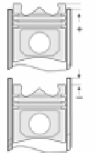
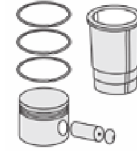
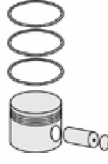
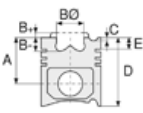
55-4240 SEMI

Silindir Kapak Conta  
(Cylinder Head Gasket)



DS560





**Motor Özellikleri**  
(Engine Specifications)

İmalatçı (Manufacturer):  
SAAB SCANIA  
Çap (Diameter): Ø 127  
FM Grup No: 7538

**DSC11-08**  
6 Sil. Dizel 11020cc  
228Kw ( 310 PS ) 17:1  
TURBO INTERCOOLED  
K 414, K 414B, K 420,  
K 424, K 425, K 425B,  
K 435, P 113  
1987....

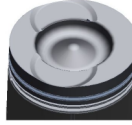
**DSC11-10**  
6 Sil. Dizel 11020cc  
228Kw ( 310 PS ) 17:1  
TURBO INTERCOOLED  
K 414, K 414B, K 424,  
K 425, K 425B, K 435,  
P 113, R 113  
1978....

**DSC11.70 N/S EURO II**  
6 Sil. Dizel 11020cc  
280Kw ( 381 PS ) 17:1  
TURBO INTERCOOLED  
MA 380A, R113  
1082....

**Piston Ölçüleri**  
(Piston Dimensions)

A : 98.760  
B - : 22.700  
BØ : 75.550  
C1 : 2.960  
D : 156.260  
E : 23.300

Pim: 50 x 107,8



**Piston Özellikleri**  
(Piston Features)

Segman Taşıyıcı  
(Ring Carrier)  
Yağ Püskürtme Oyuğu  
(Oil Jet Cut-out)  
Gözarası Konik  
(Conical Eye Gap)

**Piston Parça No**  
(Piston Part No)

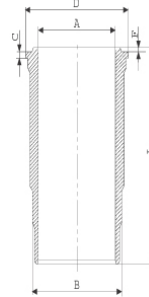
87-962000-93  
87-73731-STD

**Segman Seti**  
(Ring Set)

06-962000-20-STD  
3.500 CR KVI  
2.385 STD  
4.747 CR STD  
Goetze® LKZ-Ring®

**Silindir Gömleği**  
(Liner)

14-458190-00-WH  
B : 139.930  
L : 291.000  
D : 153.800  
C : 7.940  
F : 0.800  
R : 21.600



**Silindir Kit**  
(Assembly Set)

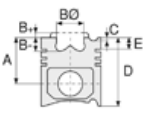
88-962000-93-STD  
88-73731-STD

**Piston - Blok Montaj**  
Yüksekliği  
(Piston - Block  
Assembly Height)

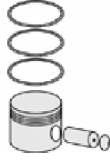




Motor Özellikleri  
(Engine Specifications)



Piston Ölçüleri  
(Piston Dimensions)



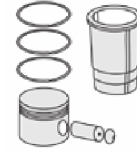
Piston Parça No  
(Piston Part No)



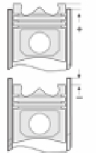
Segman Seti  
(Ring Set)



Silindir Gömleği  
(Liner)

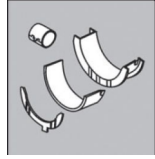


Silindir Kit  
(Assembly Set)



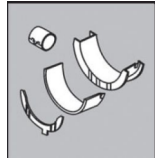
Piston - Blok Montaj  
Yüksekliği  
(Piston - Block  
Assembly Height)

Ana Yatak  
(Main Bearing)



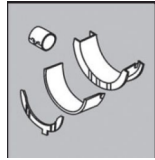
H1059/7 STD

Kol Yatak  
(Connecting Rod Bearing)



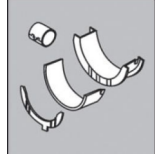
71-4237/6 STD

Eksantrik Yatak  
(Camshaft Bearing)



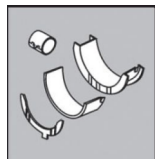
N197/4 SEMI

Ay Yatak  
(Thrust Washer)



A216/4 STD

Kol Burcu  
(Small End Bushing)



55-4240 SEMI

Silindir Kapak Conta  
(Cylinder Head Gasket)



DS560



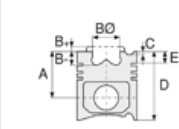


**Motor Özellikleri**  
(Engine Specifications)

İmalatçı (Manufacturer):  
SAAB SCANIA  
Çap (Diameter): Ø 127  
FM Grup No: 7555

**DSC11**  
6 Sil. Dizel 11020cc  
220KW (299PS)  
TURBO INTERCOOLED  
Endüstriyel (Industrial)  
1989....

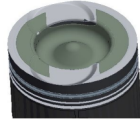
**DS11**  
6 Sil. Dizel 11020cc 15:1  
TURBO  
Endüstriyel (Industrial)  
1969 - 1991



**Piston Ölçüleri**  
(Piston Dimensions)

A : 98.760  
B- : 26.740  
BØ : 75.500  
C1 : 2.960  
C2 : 2.960  
D : 156.260  
E : 23.200

Pim: 50 x 107,8



**Piston Özellikleri**  
(Piston Features)

Segman Taşıyıcı  
(Ring Carrier)  
Sert Anotlama  
(Hard Anodizing)  
Yağ Püskürtme Oyuğu  
(Oil Jet Cut-out)  
Gözarası Konik  
(Conical Eye Gap)



**Piston Parça No**  
(Piston Part No)

87-962000-84  
87-73732-STD



**Segman Seti**  
(Ring Set)

06-962000-20-STD

3.500 CR KV1  
2.385 STD  
4.747 CR STD

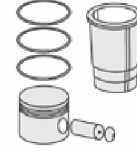
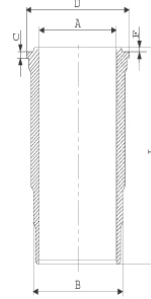
Goetze® LKZ-Ring®



**Silindir Gömleği**  
(Liner)

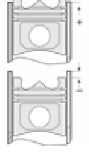
14-450390-00WH

B : 140.000  
L : 291.000  
D : 153.700  
C : 7.900  
F : 0.800  
R : 21.950



**Silindir Kit**  
(Assembly Set)

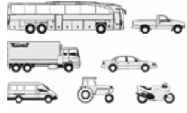
88-962000-84-STD  
88-73732-STD



**Piston - Blok Montaj**  
Yüksekliği  
(Piston - Block  
Assembly Height)







**Motor Özellikleri**  
(Engine Specifications)

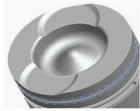
İmalatçı (Manufacturer):  
SAAB SCANIA  
Çap (Diameter): Ø 127  
FM Grup No: 7581

**DSC 14.03/04/08/  
09/10,LLK**  
8 Sil. Dizel 14181cc  
331-346 kW(450-470 PS)  
143, Stationary Engine

**Piston Ölçüleri**  
(Piston Dimensions)

A : 94.670  
B- : 24.000  
BØ : 75.050  
C1 : 2.920  
D : 146.670  
E : 14.100

Pim: 50 x 107,8



**Piston Özellikleri**  
(Piston Features)

Segman Taşıyıcı  
(Ring Carrier)  
Sert Anotlama  
(Hard Anodizing)  
Soğutma Kanallı  
(Coolin Gallery)  
Yağ Püskürtme Oyuğu  
(Oil Jet Cut-out)  
Gözarası Konik  
(Conical Eye Gap)



**Piston Parça No**  
(Piston Part No)

87-962000-52  
87-73735-STDA



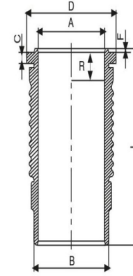
**Segman Seti**  
(Ring Set)

06-962000-10-STD  
3.500 CRP KV1  
2.385 P STD  
4.747 CRP STD

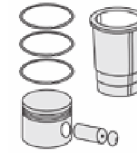


**Silindir Gömleği**  
(Liner)

14-679600-00-WH  
B : 140.000  
L : 276.000  
D : 156.000  
C : 10.050  
F : 0.400  
R : 11.150

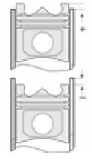


O-Ring Bilgi  
(O-RING Information)  
24-35025-42/O  
2x 139,5\*4 FPM  
1x 138\*143\*11 FPM



**Silindir Kit**  
(Assembly Set)

89-962000-52-STD  
89-73735-STDA



**Piston - Blok Montaj**  
Yüksekliği  
(Piston - Block  
Assembly Height)

87-892500-72  
87-73735-STDB

06-892500-30-STD

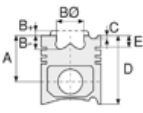
14-679600-00-WH  
O-Ring Bilgi  
(O-RING Information)  
24-35025-42/O  
2x 139,5\*4 FPM  
1x 138\*143\*11 FPM

89-892500-72-STD  
89-73735-STDB





**Motor Özellikleri**  
(Engine Specifications)



**Piston Ölçüleri**  
(Piston Dimensions)



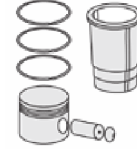
**Piston Parça No**  
(Piston Part No)



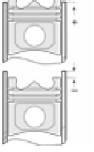
**Segman Seti**  
(Ring Set)



**Silindir Gömleği**  
(Liner)



**Silindir Kit**  
(Assembly Set)



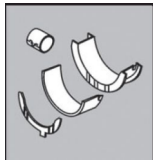
**Piston - Blok Montaj**  
**Yüksekliği**  
(Piston - Block  
Assembly Height)

**Ana Yatak**  
(Main Bearing)



H1060/5 STD

**Kol Yatak**  
(Connecting Rod Bearing)



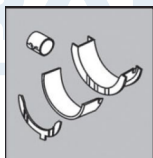
71-4249/8 STD

**Ay Yatak**  
(Thrust Washer)



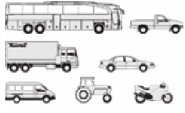
A216/4 STD

**Kol Burcu**  
(Small End Bushing)



55-4240 SEMI





**Motor Özellikleri**  
(Engine Specifications)

İmalatçı (Manufacturer):  
SAAB SCANIA  
Çap (Diameter): Ø 127  
FM Grup No: 7573

**DSC 12.02 Euro2**

6 Sil. Dizel 11716cc  
265 Kw(360 Ps) 18:1  
K124, P124, R124, T124  
1995....

**DC 12.02.Euro 3**

6 Sil. Dizel 11716cc  
204-309 kw/400-420  
PS 18:1  
124K  
2000....

**DC 16.02. Euro 3**

6 Sil. Dizel 15600cc  
353KW-480 PS 18:1  
164R-164T  
2000....

**Piston Ölçüleri**  
(Piston Dimensions)

A : 85.040  
B- : 22.150  
BØ : 78.000  
D : 129.040  
E : 14.100

Pim: 54 x 106



**Piston Özellikleri**  
(Piston Features)

Segman Taşıyıcı  
(Ring Carrier)  
Yağ Püskürtme Oyuğu  
(Oil Jet Cut-out)  
Gözarası Konik  
(Conical Eye Gap)



**Piston Parça No**  
(Piston Part No)

87-892350-22  
87-73736-STD A



**Segman Seti**  
(Ring Set)

06-892350-20-STD

3.500 CK KV1  
2.385 GOE  
4.747 CR STD

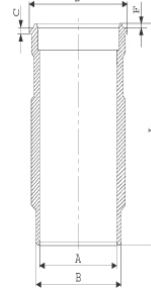
Yağ Segmanı Matkap  
Delik / Goetze®  
LKZ-Ring® (Oil Ring Drill  
Hole / Goetze®  
LKZ-Ring®)



**Silindir Gömleği**  
(Liner)

14-579940-00-WH

B : 139.000  
L : 271.120  
D : 150.000  
C : 194.270  
F : 0.850  
R : 8.250



O-Ring Bilgi  
(O-RING Information)  
24-35042-60/O  
1x 138\*144.75 \*4.6 FPM  
1x 148\*4 FPM

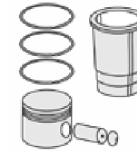
14-570100-00-WH

B : 139.000  
L : 271.120  
D : 150.000  
C : 194.270  
R : 12.000

Kurum Giderme Ringli  
/ O-Ring Bilgi (With  
Soot Removal Ring /  
O-RING Information)  
24-35042-60/O  
1X142,47\*3,53 EPDM

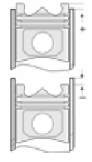
14-570101-00-WH

B : 139.000  
L : 270.120  
D : 150.500  
C : 194.270  
F : 0.850  
R : 12.000



**Silindir Kit**  
(Assembly Set)

89-892350-22-STD  
89-73736-STD A



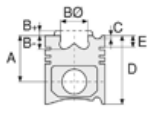
**Piston - Blok Montaj**  
Yüksekliği  
(Piston - Block  
Assembly Height)

0/+0,25

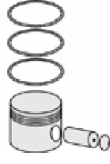




**Motor Özellikleri**  
(Engine Specifications)



**Piston Ölçüleri**  
(Piston Dimensions)



**Piston Parça No**  
(Piston Part No)



**Segman Seti**  
(Ring Set)



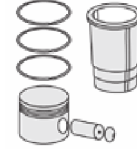
**Silindir Gömleği**  
(Liner)

Flanş Çapı +0,50 Farklı  
Çalışması (Flange  
Diameter +0,50  
Different Study)

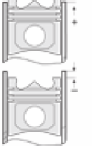
14-570102-00-WH

B : 139.000  
L : 271.120  
D : 151.000  
C : 194.270  
F : 0.850  
R : 12.000

Flanş Çapı +1,00 Farklı  
Çalışması (Flange  
Diameter +1,00  
Different Study)



**Silindir Kit**  
(Assembly Set)

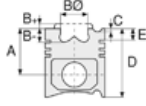


**Piston - Blok Montaj**  
Yüksekliği  
(Piston - Block  
Assembly Height)

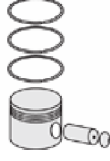




**Motor Özellikleri**  
(Engine Specifications)



**Piston Ölçüleri**  
(Piston Dimensions)



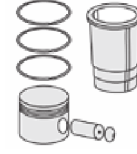
**Piston Parça No**  
(Piston Part No)



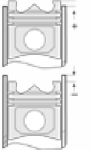
**Segman Seti**  
(Ring Set)



**Silindir Gömleği**  
(Liner)

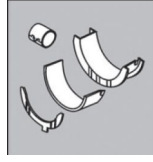


**Silindir Kit**  
(Assembly Set)



**Piston - Blok Montaj**  
**Yüksekliği**  
(Piston - Block  
Assembly Height)

**Ana Yatak**  
(Main Bearing)



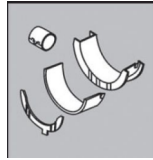
H1103/7 STD

**Kol Yatak**  
(Connecting Rod Bearing)



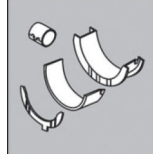
71-4860 STD

**Eksantrik Yatak**  
(Camshaft Bearing)



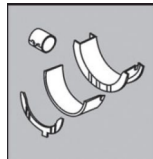
N173/7 STD

**Ay Yatak**  
(Thrust Washer)



A232/4 STD

**Kol Burcu**  
(Small End Bushing)



55-4544 SEMI

**Silindir Kapak Conta**  
(Cylinder Head Gasket)



AH6550





**Motor Özellikleri**  
(Engine Specifications)

İmalatçı (Manufacturer):  
SAAB SCANIA  
Çap (Diameter): Ø 127  
FM Grup No: 7574

**DC 11.03 Euro3**  
6 Sil. Dizel 10640cc  
250 Kw(340 Ps) 18:1  
Turbo, Intercooler 24 v  
k114, P114, R114, T114  
1996....

**DC 11.04 Euro3 /  
DC 11.09 Euro3**  
6 Sil. Dizel 10640cc  
280 Kw(381 PS) 18:1  
Turbo, Intercooler 24 v  
Century 12.35, k114,  
P114, R114, T114  
1996....

**DC 9.19 / DC 9.20**  
5 Sil. Dizel 169 kw /  
230 PS  
DOOSAN ile Ortak Motor  
(Common Engine With  
DOOSAN)  
P 230-P 270

**Piston Ölçüleri**  
(Piston Dimensions)

A : 92.040  
B - : 21.150  
BØ : 75.100  
D : 136.040  
E : 14.200

Pim: 54 x 106



**Piston Özellikleri**  
(Piston Features)

Segman Taşıyıcı  
(Ring Carrier)  
Yağ Püskürtme Oyuğu  
(Oil Jet Cut-out)  
Burçlu Piston  
(Bushing Piston)  
Gözarası Konik  
(Conical Eye Gap)

**Piston Parça No**  
(Piston Part No)

87-892350-42  
87-73737-STD

87-892300-42  
87-73737-STD

**Segman Seti**  
(Ring Set)

06-892350-20-STD  
3.500 CK KV1  
2.385 GOE  
3.500 CR STD

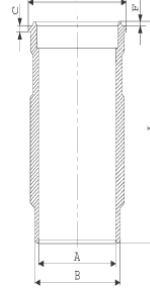
Yağ Segmanı Matkap  
Delikli / Goetze®  
LKZ-Ring® (Oil Ring Drill  
Perforated / Goetze®  
LKZ-Ring®)

06-892300-20-STD  
3.500 CK KV1  
2.385 P F14  
3.500 CR STD

Goetze® LKZ-Ring® /  
Yağ Segmanı Matkap  
Delikli (Goetze®  
LKZ-Ring® / Oil Ring Drill  
Perforated)

**Silindir Gömleği**  
(Liner)

14-579940-00-WH  
B : 139.000  
L : 271.120  
D : 150.000  
C : 194.270  
F : 0.850  
R : 8.250



O-Ring Bilgi  
(O-RING Information)  
24-35054-60/O  
1x 138\*144.75 \*4.6 FPM  
1x 148\*4 FPM

14-579940-00-WH  
O-Ring Bilgi  
(O-RING Information)  
24-35054-60/O  
1x 138\*144.75 \*4.6 FPM  
1x 148\*4 FPM

**Silindir Kit**  
(Assembly Set)

89-892350-42-STD  
89-73737-STD

89-892300-42-STD  
89-73737-STD

**Piston - Blok Montaj**  
Yüksekliği  
(Piston - Block  
Assembly Height)

**Sil. Kapak. Conta**  
(Cylinder Head Gasket)



AH5670

30-030491-00





**Motor Özellikleri**  
(Engine Specifications)

İmalatçı (Manufacturer):  
SAAB SCANIA  
Çap (Diameter): Ø 127  
FM Grup No: 7579  
  
DSC 14.13/15 Euro 2  
8 Sil. Dizel 1418lcc  
338-390 Kw (460-530 Ps)  
V8  
143, 144  
1994....

**Piston Ölçüleri**  
(Piston Dimensions)

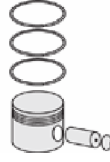
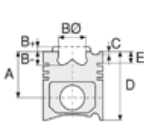
A : 94.670  
B- : 19.590  
BØ : 83.000  
BX : 3.000  
BY : 2.000  
C1 : 2.920  
D : 146.670  
E : 14.100

Pim: 50 x 101,9



**Piston Özellikleri**  
(Piston Features)

Segman Taşıyıcı  
(Ring Carrier)  
Çelik Plaka  
(Steel Strut)  
Sert Anotlama  
(Hard Anodizing)  
Yağ Püskürtme Oyuğu  
(Oil Jet Cut-out)  
Burçlu Piston  
(Bushing Piston)  
Gözarası Konik  
(Conical Eye Gap)



**Piston Parça No**  
(Piston Part No)

87-892350-62  
87-73738-STD



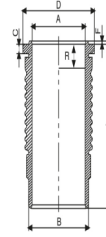
**Segman Seti**  
(Ring Set)

06-892350-20-STD  
  
3.500 CK KV1  
2.385 GOE  
3.500 CR STD  
  
Yağ Segmanı Matkap  
Delikli / Goetze®  
LKZ-Ring® (Oil Ring Drill  
Perforated / Goetze®  
LKZ-Ring®)

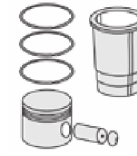


**Silindir Gömleği**  
(Liner)

14-670070-00-WH  
  
B : 139.500  
L : 275.500  
D : 155.860  
C : 10.700  
F : 0.380  
R : 8.500

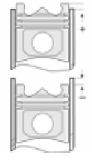


O-Ring Bilgi  
(O-RING Information)  
24-35025-42/O  
2x 139,5\*4 FPM  
1x 138\*143\*11 FPM



**Silindir Kit**  
(Assembly Set)

89-892350-62-STD  
89-73738-STD



**Piston - Blok Montaj**  
Yüksekliği  
(Piston - Block  
Assembly Height)

87-892300-12  
87-73738-STD

06-892300-20-STD  
  
3.500 CK KV1  
2.385 P F14  
3.500 CR STD  
  
Goetze® LKZ-Ring® /  
Yağ Segmanı Matkap  
Delikli (Goetze®  
LKZ-Ring® / Oil Ring Drill  
Perforated)

14-670070-00-WH  
O-Ring Bilgi  
(O-RING Information)  
24-35025-42/O  
2x 139,5\*4 FPM  
1x 138\*143\*11 FPM

87-892300-12-STD  
87-73738-STD



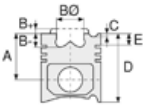


SAAB - SCANIA - Ø 127

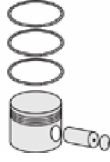
87-73738-STD



**Motor Özellikleri**  
(Engine Specifications)



**Piston Ölçüleri**  
(Piston Dimensions)



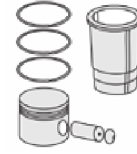
**Piston Parça No**  
(Piston Part No)



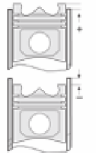
**Segman Seti**  
(Ring Set)



**Silindir Gömleği**  
(Liner)

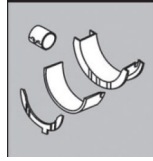


**Silindir Kit**  
(Assembly Set)



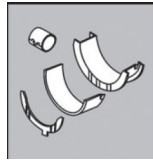
**Piston - Blok Montaj**  
**Yüksekliği**  
(Piston - Block  
Assembly Height)

**Ana Yatak**  
(Main Bearing)



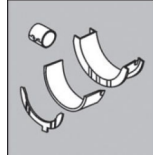
H1060/5 STD

**Kol Yatak**  
(Connecting Rod Bearing)



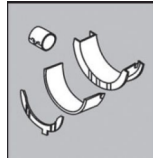
71-4249/8 STD

**Ay Yatak**  
(Thrust Washer)



A216/4 STD

**Kol Burcu**  
(Small End Bushing)



55-4240 SEMI

**Silindir Kapak Conta**  
(Cylinder Head Gasket)



DB140

DV270





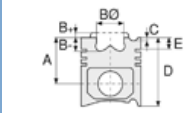


**Motor Özellikleri**  
(Engine Specifications)

İmalatçı (Manufacturer):  
SAAB SCANIA  
Çap (Diameter): Ø 127  
FM Grup No: 7587

DC 11.03/11.04 /  
11.08 EURO 3

6 Sil. Dizel 10640cc  
250 Kw-380 PS  
114K-P-R-T- OMNICITY



**Piston Ölçüleri**  
(Piston Dimensions)

A : 92.040  
B- : 21.150  
BØ : 75.100  
D : 136.040  
E : 14.200

Pim: 54 x 106



**Piston Özellikleri**  
(Piston Features)

Segman Taşıyıcı  
(Ring Carrier)  
Yağ Püskürtme Oyuğu  
(Oil Jet Cut-out)  
Gözarası Konik  
(Conical Eye Gap)



**Piston Parça No**  
(Piston Part No)

87-892350-82  
87-73757-STD



**Segman Seti**  
(Ring Set)

06-892350-20-STD

3.500 CK KV1  
2.385 GOE  
3.500 CR STD

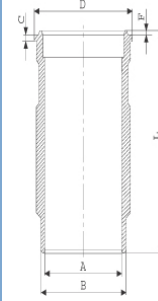
Yağ Segmanı Matkap  
Delikli / Goetze®  
LKZ-Ring® (Oil Ring Drill  
Perforated / Goetze®  
LKZ-Ring®)



**Silindir Gömleği**  
(Liner)

14-570030-00-WH

B : 139.500  
L : 271.120  
D : 151.000  
C : 194.270  
F : 0.850  
R : 8.250



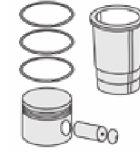
O-Ring Bilgi  
(O-RING Information)  
24-35046-60/O  
1x 147,5\*4 EPDM PEROX  
1x 138\*144,75\*4,6 FPM

14-570030-00-WH  
O-Ring Bilgi  
(O-RING Information)  
24-35046-60/O  
1x 147,5\*4 EPDM PEROX  
1x 138\*144,75\*4,6 FPM

14-570031-00-WH

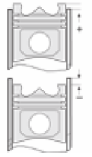
B : 139.500  
L : 271.120  
D : 151.500  
C : 194.270  
F : 0.850  
R : 8.250

Flanş Çapı + 0,50 Farklı  
Çalışması (Flange  
Diameter + 0.50  
Different Study)



**Silindir Kit**  
(Assembly Set)

89-892350-82-STD  
89-73757-STD

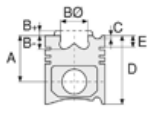


**Piston - Blok Montaj**  
Yüksekliği  
(Piston - Block  
Assembly Height)

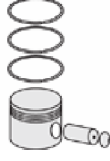




**Motor Özellikleri**  
(Engine Specifications)



**Piston Ölçüleri**  
(Piston Dimensions)



**Piston Parça No**  
(Piston Part No)



**Segman Seti**  
(Ring Set)

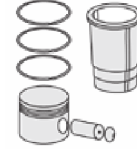


**Silindir Gömleği**  
(Liner)

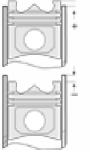
14-570032-00-WH

B : 139.500  
L : 271.120  
D : 152.000  
C : 194.270  
F : 0.850  
R : 8.250

Flanş Çapı +1,00 Farklı  
Çalışması (Flange  
Diameter +1,00  
Different Study)



**Silindir Kit**  
(Assembly Set)



**Piston - Blok Montaj**  
**Yüksekliği**  
(Piston - Block  
Assembly Height)



**FEDERAL-MOGUL**  
**POWERTRAIN**  
TÜRKİYE

**SİL. KAPAK. CONTA**  
(CYLINDER HEAD GASKET)



AH5670



**Motor Özellikleri**  
(Engine Specifications)

İmalatçı (Manufacturer):  
SAAB SCANIA  
Çap (Diameter): Ø 127  
FM Grup No: 7516

**DSC 12.01 EURO2**

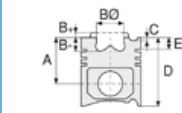
6 Sil. Dizel 11700cc  
265/325 Kw (360/442 PS)  
18:1  
Turbocharged  
Intercooled 24 Valve  
R 164, R124 LA 400  
1996....

**DSC 12.02 EURO3**

6 Sil. Dizel 11700cc  
265/325 Kw (360/442 PS)  
18:1  
Turbocharged  
Intercooled 24 Valve  
R124 LA 400, R164  
1996....

**DSC 16.02 EURO3 V8**

8 Sil. Dizel 15600cc  
353/426 Kw (480/579 PS)  
18:1  
Turbocharged  
Intercooled 32 Valve  
R 164, R124 LA 400  
1998 - 2002



**Piston Ölçüleri**  
(Piston Dimensions)

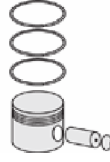
A : 85.210  
B- : 22.150  
BØ : 78.000  
D : 122.710  
E : 14.020

Pim: 54 x 106



**Piston Özellikleri**  
(Piston Features)

Yağ Püskürtme Oyuğu  
(Oil Jet Cut-out)  
Gözarası Konik  
(Conical Eye Gap)






**Piston Parça No**  
(Piston Part No)

87-892350-02  
87-75002-STD  
Çift Parçalı Piston  
(Two Piece Piston)



**Segman Seti**  
(Ring Set)

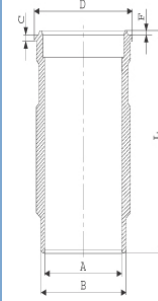
06-892350-20-STD  
3.500  CK KV1  
2.385  GOE  
3.500  CR STD

Yağ Segmanı Matkap  
Delikli / Goetze®  
LKZ-Ring® (Oil Ring Drill  
Perforated / Goetze®  
LKZ-Ring®)

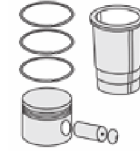


**Silindir Gömleği**  
(Liner)

14-579940-00-WH  
B : 139.000  
L : 271.120  
D : 150.000  
C : 194.270  
F : 0.850  
R : 8.250

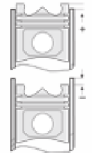


O-Ring Bilgi  
(O-RING Information)  
24-35042-60/O  
1x 138\*144.75\*4.6 FPM  
1x 148\*4 FPM



**Silindir Kit**  
(Assembly Set)

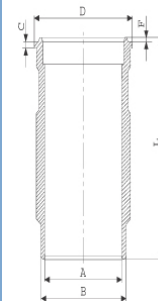
89-892350-02-STD  
89-75002-STD



**Piston - Blok Montaj**  
Yüksekliği  
(Piston - Block  
Assembly Height)

14-570030-00-WH

B : 140.000  
L : 271.120  
D : 151.000  
C : 194.270  
F : 0.850  
R : 8.250



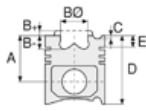
O-Ring Bilgi  
(O-RING Information)  
24-35042-60/O  
1x 147,5\*4 EPDM PEROX  
1x 138\*144,75\*4,6 FPM

89-892350-12-STD  
89-75002-STDB

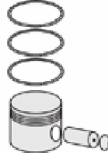




**Motor Özellikleri**  
(Engine Specifications)



**Piston Ölçüleri**  
(Piston Dimensions)



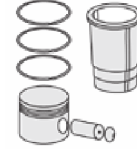
**Piston Parça No**  
(Piston Part No)



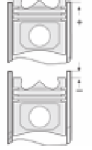
**Segman Seti**  
(Ring Set)



**Silindir Gömleği**  
(Liner)



**Silindir Kit**  
(Assembly Set)



**Piston - Blok Montaj**  
**Yüksekliği**  
(Piston - Block  
Assembly Height)




89-892350-52-STD  
89-75002-STDH

15-570080-00-WH  
B : 139.000  
L : 271.120  
D : 151.000  
C : 194.270  
F : 0.850  
R : 8.250

89-892350-14-STD  
89-75002-STDH

O-Ring Bilgi  
(O-Ring Infotmation)  
24-35050-30/O  
1x 138\*144,75\*4,6 FPM  
1x 148\*4 FPM

87-892350-03  
87-75002-STD1  
0,20 mm Kısa (Short)

06-892300-20-STD  
3.500  CK KV1  
2.385  P F14  
3.500  CR STD




87-892300-02  
87-75002-STDD

Goetze® LKZ-Ring® /  
Yağ Segmanı Matkap  
Delikli (Goetze® LKZ-Ring®  
/ Oil Ring Drill  
Perforated)

14-579940-00-WH  
O-Ring Bilgi  
(O-Ring Information)  
24-35042-60/O  
1x 138\*144.75 \*4.6 FPM  
1x 148\*4 FPM

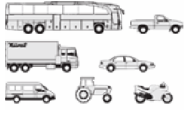
89-892300-02-STD  
89-75002-STDD

87-892600-32  
87-75002-STDJ

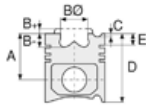
06-892600-20-STD  
3.500  CK KV1  
2.385  CRP F14  
3.500  CK GOE

Goetze® LKZ-Ring® /  
Yağ Segmanı Matkap  
Delikli (Goetze® LKZ-Ring®  
/ Oil Ring Drill  
Perforated)





**Motor Özellikleri**  
(Engine Specifications)



**Piston Ölçüleri**  
(Piston Dimensions)



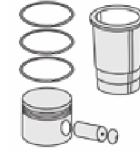
**Piston Parça No**  
(Piston Part No)



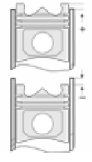
**Segman Seti**  
(Ring Set)



**Silindir Gömleği**  
(Liner)



**Silindir Kit**  
(Assembly Set)



**Piston - Blok Montaj**  
**Yüksekliği**  
(Piston - Block  
Assembly Height)

14-570030-00-WH

O-Ring Bilgi  
(O-Ring Information)  
24-35042-60/O

1x 147,5\*4 EPDM PEROX  
1x 138\*144,75\*4,6 FPM

14-570031-00-WH

B : 140.000  
L : 271.120  
D : 151.500  
C : 194.270  
F : 0.850  
R : 8.250

Flanş Çapı +0,50 Farklı  
Çalışması (Flange  
Diameter +0,50  
Different Study)

14-570032-00-WH

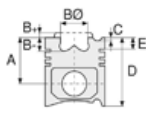
B : 140.000  
L : 271.120  
D : 152.000  
C : 194.270  
F : 0.850  
R : 8.250

Flanş Çapı +1,00 Farklı  
Çalışması (Flange  
Diameter +1,00  
Different Study)

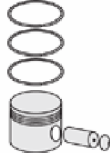




**Motor Özellikleri**  
(Engine Specifications)



**Piston Ölçüleri**  
(Piston Dimensions)



**Piston Parça No**  
(Piston Part No)



**Segman Seti**  
(Ring Set)



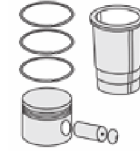
**Silindir Gömleği**  
(Liner)

14-570101-00-WH  
B : 139.000  
L : 270.120  
D : 150.500  
C : 194.270  
F : 0.850  
R : 12.000

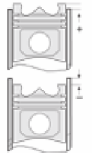
Flanş Çapı +0,50 Farklı  
Çalışması (Flange  
Diameter +0,50  
Different Study)

14-570102-00-WH  
B : 139.000  
L : 271.120  
D : 151.000  
C : 194.270  
F : 0.850  
R : 12.000

Flanş Çapı +1,00 Farklı  
Çalışması (Flange  
Diameter +1,00  
Different Study)



**Silindir Kit**  
(Assembly Set)

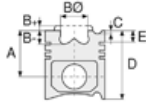


**Piston - Blok Montaj**  
Yüksekliği  
(Piston - Block  
Assembly Height)

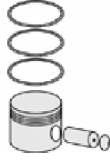




Motor Özellikleri  
(Engine Specifications)



Piston Ölçüleri  
(Piston Dimensions)



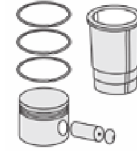
Piston Parça No  
(Piston Part No)



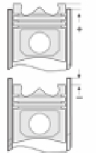
Segman Seti  
(Ring Set)



Silindir Gömleği  
(Liner)

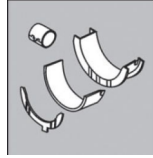


Silindir Kit  
(Assembly Set)



Piston - Blok Montaj  
Yüksekliği  
(Piston - Block  
Assembly Height)

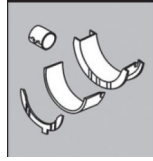
Ana Yatak  
(Main Bed)



H1103/7 STD

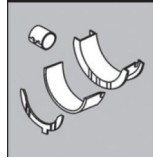
72-4072 STD

Kol Yatak  
(Connecting Rod Bearing)



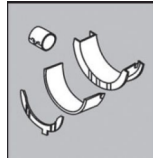
71-4860 STD

Ay Yatak  
(Thrust Washer)



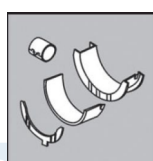
A232/4 STD

Eksantrik Yatak  
(Camshaft Bearing)



N173/7 STD

Kol Burcu  
(Small End Bushing)



55-4544 SEMI

Sil. Kapak. Conta  
(Cylinder Head Gasket)



AH6550





**Motor Özellikleri**  
(Engine Specifications)

İmalatçı (Manufacturer):  
SAAB SCANIA  
Çap (Diameter): Ø 127  
FM Grup No: 7577

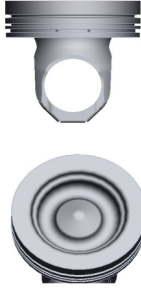
**DT12 O3 /11/12/17/19**  
6 Sil. Dizel  
R 124 EURO 3  
2006....

**DT12/420 EURO 4**  
6 Sil. Dizel 420 PS  
124  
2009....

**Piston Ölçüleri**  
(Piston Dimensions)

A : 85.210  
B- : 22.450  
BØ : 77.400  
D : 122.710  
E : 14.020

Pim: 54 x 106



**Piston Özellikleri**  
(Piston Features)

Yağ Püskürtme Oyuğu  
(Oil Jet Cut-out)  
Gözarası Konik  
(Conical Eye Gap)



**Piston Parça No**  
(Piston Part No)

87-892600-02  
87-75008-STD  
87-892600-03  
87-75008-STD1  
0,20 mm Kısa (Short)

Çift parçalı Piston  
(Articulated)



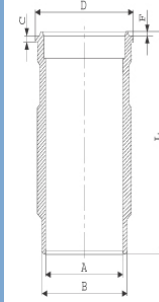
**Segman Seti**  
(Ring Set)

06-892600-20-STD  
3.500 CK KV1  
2.385 CRP F14  
3.500 CK GOE  
Goetze® LKZ-Ring® /  
Yağ Segmanı Matkap  
Delikli (Goetze®  
LKZ-Ring® / Oil Ring Drill  
Perforated)



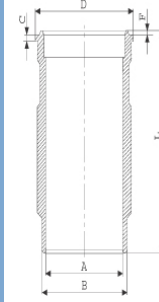
**Silindir Gömleği**  
(Liner)

14-570030-00-WH  
B : 140.000  
L : 271.000  
D : 151.000  
C : 194.270  
F : 0.970

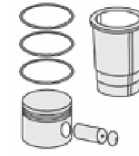


O-Ring Bilgi  
(O-RING Information)  
24-35046-60/O  
1x 147,5\*4 EPDM PEROX  
1x 138\*144,75\*4.6 FPM

14-570050-00-WH  
B : 138.500  
L : 271.120  
D : 150.000  
C : 194,270  
F : 0.800

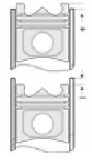


O-Ring Bilgi  
(O-RING Information)  
24-35054-60/O  
1x 138\*144,75\*4.6 FPM  
1x 148\*4 FPM



**Silindir Kit**  
(Assembly Set)

89-892600-42  
89-75008-STD8



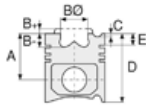
**Piston - Blok Montaj**  
Yüksekliği  
(Piston - Block  
Assembly Height)







**Motor Özellikleri**  
(Engine Specifications)



**Piston Ölçüleri**  
(Piston Dimensions)



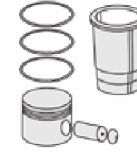
**Piston Parça No**  
(Piston Part No)



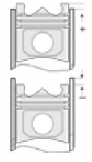
**Segman Seti**  
(Ring Set)



**Silindir Gömleği**  
(Liner)



**Silindir Kit**  
(Assembly Set)



**Piston - Blok Montaj**  
**Yüksekliği**  
(Piston - Block  
Assembly Height)

14-570050-00-WH  
O-Ring Bilgi  
(O-RING Information)  
24-35042-60/O  
1x138\*144,75\*4.6 FPM  
1x 148\*4 FPM

14-570030-00-WH  
O-Ring Bilgi  
(O-RING Information)  
24-35046-60/O  
1x 147,5\*4 EPDM PEROX  
1x138\*144,75\*4.6 FPM

14-570031-00-WH  
B : 140.000  
L : 271.000  
D : 151.500  
C : 194270.000  
F : 970.000

Flanş Çapı +0,50 Farklı  
Çalışması (Flange  
Diameter +0,50  
Different Study)

14-570032-00-WH  
B : 140.000  
L : 271.000  
D : 152.000  
C : 194270.000  
F : 0.970

Flanş Çapı +1,00 Farklı  
Çalışması (Flange  
Diameter +1,00  
Different Study)

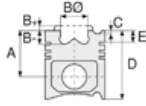
15-570050-00-WH  
B : 138.500  
L : 271.120  
D : 150.000  
C : 5.000  
F : 0.800

O-Ringli  
(With O-Ring)

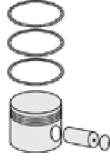




**Motor Özellikleri**  
(Engine Specifications)



**Piston Ölçüleri**  
(Piston Dimensions)



**Piston Parça No**  
(Piston Part No)



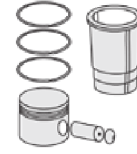
**Segman Seti**  
(Ring Set)



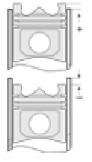
**Silindir Gömleği**  
(Liner)

15-570030-00-WH  
B : 140.000  
L : 270.500  
D : 150.960  
C : 194.270  
F : 0.970

O-Ringli  
(With O-Ring)

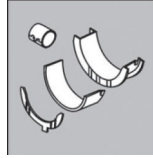


**Silindir Kit**  
(Assembly Set)



**Piston - Blok Montaj**  
Yüksekliği  
(Piston - Block  
Assembly Height)

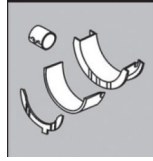
**Ana Yatak**  
(Main Bed)



H1103/7 STD

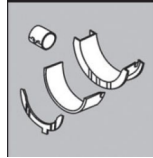
72-4072 STD

**Kol Yatak**  
(Connecting Rod Bearing)



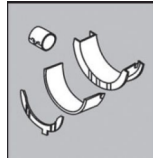
71-4860 STD

**Ay Yatak**  
(Thrust Washer)



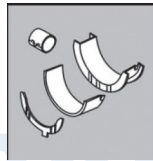
A232/4 STD

**Eksantrik Yatak**  
(Camshaft Bearing)



N173/7 STD

**Kol Burcu**  
(Small End Bushing)



55-4544 SEMI

**Sil. Kapak. Conta**  
(Cylinder Head Gasket)



AH5670

30-030491-00

