



**Motor Özellikleri**  
(Engine Specifications)

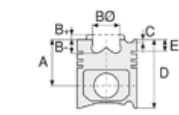
İmalatçı (Manufacturer):  
Saviem-MAN  
Çap (Diameter): 121  
FM Grup No: 5413

**D 2156 MTN 5**

6 Sil. Dizel 10350cc  
210 Kw (285 PS) 17:1  
38,280 T, SH 280TU /  
36,280 TU  
1968 - 1978

**D 2156 MT/MTN/MTX**

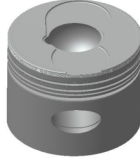
6 Sil. Dizel 10344cc 187/  
210 Kw (255-285 PS) 17:1  
Turbocharged  
13.256 F, 16.256 F,  
19.256 F, 22.256 F,  
26.256 F, 30.256 F  
1966 - 1971



**Piston Ölçüleri**  
(Piston Dimensions)

A : 94.000  
B- : 48.350  
BØ : 47.200  
C1 : 2.400  
D : 162.000  
E : 20.000

Pim: 45 x 102



**Piston Özellikleri**  
(Piston Features)

Segman Taşıyıcı  
(Ring Carrier)  
Sert Anotlama  
(Hard Anodizing)  
Gözarası Düz  
(Flat Eye Gap)



**Piston Parça No**  
(Piston Part No)

87-274800-22  
87-71564-STD  
87-274800-23  
87-71564-STD1  
0,20 mm Kısa (Short)  
87-274800-24  
87-71564-STD2  
0,40 mm Kısa (Short)



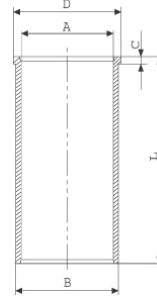
**Segman Seti**  
(Ring Set)

06-274800-20-STD  
3.500 CR IKA  
3.000 STD  
3.000 STD  
5.500 CR STD



**Silindir Gömleği**  
(Liner)

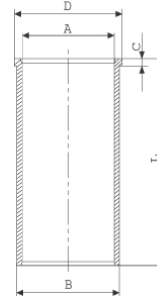
14-020560-00-D  
B : 126.100  
L : 287.000  
D : 132.000  
C : 8.200



14-020561-00-D  
B : 126.600  
L : 287.000  
D : 132.000  
C : 8.200

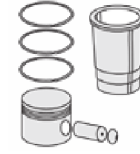
Dış çap 0,50 mm Farklı  
(Outer Diameter  
0,50mm Different)

14-022830-00-DH  
B : 125.990  
L : 287.000  
D : 132.000  
C : 8.000

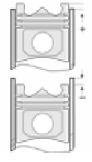


14-022831-00-DH  
B : 126.490  
L : 287.000  
D : 132.000  
C : 8.000

Dış çap 0,50 mm Farklı  
(Outer Diameter  
0,50mm Different)



**Silindir Kit**  
(Assembly Set)



**Piston - Blok Montaj**  
**Yüksekliği**  
(Piston - Block  
Assembly Height)

+0,05/+0,35

