



SCANIA - Ø 75

87-71898-STD



Motor Özellikleri
(Engine Specifications)

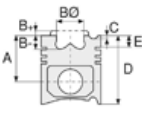
İmalatçı (Manufacturer):
Scania
Çap (Diameter): 75
FM Grup No: 7501

SCANIA 15.5W31
WB31

2 Sil. Dizel
Su soğutmalı
(Water-Cooling)
BENDIX WESTINGHOUSE
HAVA KOMPR

SCANIA 15W37 WB15

2 Sil. Dizel
Hava soğutmalı
(Air-Cooling)
BENDIX WESTINGHOUSE
HAVA KOMPR



Piston Ölçüleri
(Piston Dimensions)

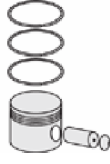
A : 32.200
D : 52.650
E : 2.500

Pim: 15,88 x 60,4



Piston Özellikleri
(Piston Features)

Gözarası Düz
(Flat Eye Gap)



Piston Parça No
(Piston Part No)

87-990700-02
87-71898-STD
87-990705-02
87-71898-025

87-990707-02
87-71898-050

87-990709-02
87-71898-0,75

87-990700-22
87-71898-STD A

87-990705-22
87-71898-025 A

87-990707-22
87-71898-050 A

87-990711-22
87-71898-1,00 A



Segman Seti
(Ring Set)

06-990700-00-STD
06-990705-00 0,25 mm
06-990707-00 0,50 mm
06-990709-00 0,75 mm

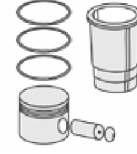
2.385  P STD
2.385  P STD
3.947  P STD

06-990700-00-STD
06-990705-00 0,25 mm
06-990707-00 0,50 mm
06-990709-00 0,75 mm

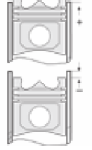
2.385  P STD
2.385  P STD
3.947  P STD



Silindir Gömleği
(Liner)

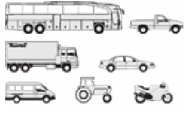


Silindir Kit
(Assembly Set)



Piston - Blok Montaj
Yüksekliği
(Piston - Block
Assembly Height)

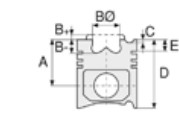




Motor Özellikleri
(Engine Specifications)

İmalatçı (Manufacturer):
Scania
Çap (Diameter): 115
FM Grup No: 7502

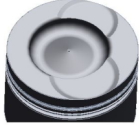
DS 9.05/06/08
6 Sil. Dizel 8471cc
155/167/185 Kw (221/227/
252 PS) 17:1
Turbo
93
1985 - 1991



Piston Ölçüleri
(Piston Dimensions)

A : 87.400
B- : 20.230
BØ : 69.000
BX : 3.000
BY : 2.000
C1 : 2.400
C2 : 2.600
D : 139.400
E : 21.640

Pim: 50 x 92



Piston Özellikleri
(Piston Features)

Segman Taşıyıcı
(Ring Carrier)
Yağ Püskürtme Oyuğu
(Oil Jet Cut-out)
Gözarası Konik
(Conical Eye Gap)



Piston Parça No
(Piston Part No)

87-960900-12
87-71892-STDA



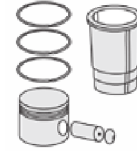
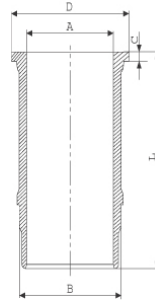
Segman Seti
(Ring Set)

06-960900-20-STD
3.160 CR KV1
2.385 STD
4.747 CR STD
Goetze® LKZ-Ring®



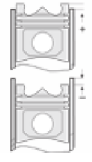
Silindir Gömleği
(Liner)

14-606710-00-WH
B : 128.000
L : 265.500
D : 140.750
C : 10.300
R : 19.100



Silindir Kit
(Assembly Set)

89-960900-12-STD
89-71892-STDA



Piston - Blok Montaj
Yüksekliği
(Piston - Block
Assembly Height)

+0,07 / +0,50

87-892700-02
87-71892-STDC

06-892700-20-STD
3.160 CKS KV1
2.385 STD
4.747 CKS STD
Goetze® LKZ-Ring®

14-606710-00-WH

88-892700-02-STD
88-71892-STDC





Motor Özellikleri
(Engine Specifications)

İmalatçı (Manufacturer):
Saab-Scania
Çap (Diameter): 115
FM Grup No: 7564

DS9-01
6 Sil. Dizel 8471cc
162/180 KW (220/245)PS
TURBO
G82M, P82M, P92M
1985 - 1988

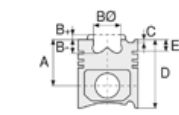
DS9-02
6 Sil. Dizel 8471cc
162/180 KW (220/245)PS
TURBO
G82M, P82M, P92M
1985 - 1988

DS9-01L01
6 Sil. Dizel 8471cc
180/202 KW (245/275 PS)
TURBO
G92H, G92M, P92H,
P92HB, P92M, P92MA,
R92H, R92M

DS9-01L02
6 Sil. Dizel 8471cc
180/202 KW (245/275 PS)
TURBO
G92H, G92M, P92H,
P92HB, P92M, P92MA,
R92H, R92M

DSC9-02
6 Sil. Dizel 8471cc
207 KW(282 PS)
TURBO INTERCOOLER
G92, G93, P92, P93ML,
R92, R93, T92
1985 - 1995

DS9-03B01
6 Sil. Dizel 8471cc
150 KW (204 PS)
TURBO
K92CL, K92CR, P93
1987 - 1997



Piston Ölçüleri
(Piston Dimensions)

A : 87.400
B- : 22.150
BØ : 69.000
BX : 3.000
BY : 2.000
C1 : 2.600
C2 : 2.400
D : 139.400
E : 21.640

Pim: 50 x 92



Piston Özellikleri
(Piston Features)

Segman Taşıyıcı
(Ring Carrier)
Yağ Püskürtme Oyuğu
(Oil Jet Cut-out)
Gözarası Konik
(Conical Eye Gap)



Piston Parça No
(Piston Part No)

87-960900-22
87-71893-STD



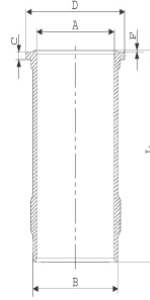
Segman Seti
(Ring Set)

06-960900-20-STD
3.160 CR KV1
2.385 STD
4.747 CR STD
Goetze® LKZ-Ring®



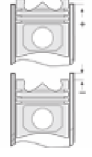
Silindir Gömleği
(Liner)

14-374990-00-WH
B : 130.000
L : 270.500
D : 137.300
C : 8.200
F : 0.800



Silindir Kit
(Assembly Set)

88-960900-22-STD
88-71893-STD



Piston - Blok Montaj
Yüksekliği
(Piston - Block
Assembly Height)

+0,07 / +0,50

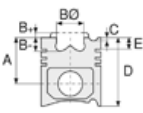


Motor Özellikleri
(Engine Specifications)

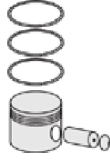
DS9-04
6 Sil. Dizel 8471cc
150 KW (204 PS)
TURBO
G82M, P82M

DS9-01L01
6 Sil. Dizel 8471cc
TURBO INTERCOOLED
G92H, G92M, P92H,
P92HB, P92M, P92MA,
R92H, R92M

DSC9-01L02
6 Sil. Dizel 8471cc
TURBO INTERCOOLED
G92H, G92M, P92H,
P92HB, P92M, P92MA,
R92H, R92M



Piston Ölçüleri
(Piston Dimensions)



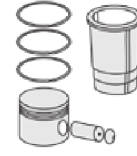
Piston Parça No
(Piston Part No)



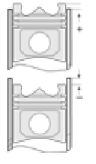
Segman Seti
(Ring Set)



Silindir Gömleği
(Liner)



Silindir Kit
(Assembly Set)



Piston - Blok Montaj
Yüksekliği
(Piston - Block
Assembly Height)





Motor Özellikleri
(Engine Specifications)

İmalatçı (Manufacturer):
Scania
Çap (Diameter): 115
FM Grup No: 7558

DS8LB09 - LB14

6 Sil. Dizel 7800cc
140-148,5 Kw
(190-202 PS) 17:1
TURBO
K414, K414B, LB81, LB86,
LBS86
1975 - 1980

DS8LB09 - LB14

6 Sil. Dizel 7800cc
140-148,5 Kw
(190-202 PS) 17:1
TURBO
K414, K414B, LB81, LB86,
LBS86
1975 - 1980

DS801LB14/15/16

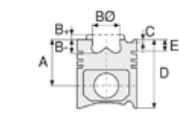
6 Sil. Dizel 7800cc
120 Kw (163 PS)
TURBO
K414, K414B, LB81, LB86,
LBS86
1975 - 1980

DS8-05

6 Sil. Dizel 7800cc
140Kw (190 PS)
TURBO
K414, K414B, P82H, P82M,
T82H, T82M
1981 - 1986

DS8-06L01

6 Sil. Dizel 7800cc
155Kw (211 PS)
TURBO
K414, K414B, P82H, P82M,
T82H, T82M
1981 - 1986



Piston Ölçüleri
(Piston Dimensions)

A : 96.110
B- : 18.100
BØ : 75.000
C1 : 2.500
D : 150.100
E : 21.200

Pim: 46 x 96



Piston Özellikleri
(Piston Features)

Segman Taşıyıcı
(Ring Carrier)
Gözarası Konik
Conical Eye Gap



Piston Parça No
(Piston Part No)

87-961000-02
87-71895-STD



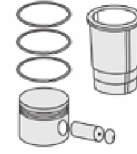
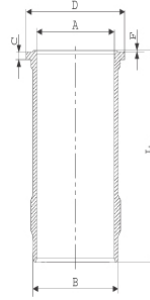
Segman Seti
(Ring Set)

06-961000-80-STD
2.385 █ CKP IKA
2.385 █ STD
4.747 █ CR STD
Goetze® LKZ-Ring®



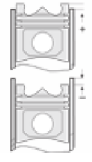
Silindir Gömleği
(Liner)

14-374990-00-WH
B : 130.000
L : 270.500
D : 137.300
C : 8.200
F : 0.800



Silindir Kit
(Assembly Set)

88-961000-02-STD
88-71895-STD



Piston - Blok Montaj
Yüksekliği
(Piston - Block
Assembly Height)

+0,07 / +0,50





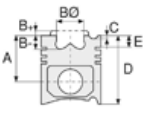
SCANIA - Ø 115

87-71895-STD

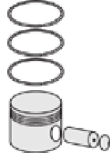


Motor Özellikleri
(Engine Specifications)

DS18-01L01 - L04
6 Sil. Dizel 7800cc
170Kw (231 PS)
TURBO
P82H, P82M, T82H, T82M
1981 - 1986



Piston Ölçüleri
(Piston Dimensions)



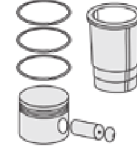
Piston Parça No
(Piston Part No)



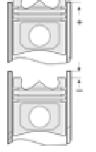
Segman Seti
(Ring Set)



Silindir Gömleği
(Liner)



Silindir Kit
(Assembly Set)



Piston - Blok Montaj
Yüksekliği
(Piston - Block
Assembly Height)

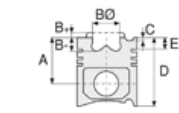




Motor Özellikleri
(Engine Specifications)

İmalatçı (Manufacturer):
Saab-Scania
Çap (Diameter): 115
FM Grup No: 7515

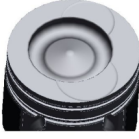
DSC 09 EURO2
6 Sil. Dizel 8724cc
310 PS 15,5:1
Turbocharged Intercooled
R94
1996....



Piston Ölçüleri
(Piston Dimensions)

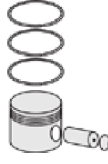
A : 83.400
B- : 20.500
BØ : 71.500
BX : 3.000
BY : 2.000
C1 : 0.500
D : 130.950
E : 12.000

Pim: 50 x 91,8



Piston Özellikleri
(Piston Features)

Segman Taşıyıcı
(Ring Carrier)
Gözarası Konik
(Conical Eye Gap)



Piston Parça No
(Piston Part No)

87-109200-12
87-71899-STD A



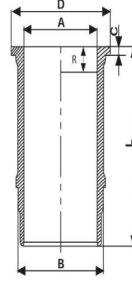
Segman Seti
(Ring Set)

06-109200-20-STD
3.160 CK KV1
2.385 STD
3.500 CR STD
Goetze® LKZ-Ring®

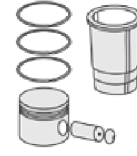


Silindir Gömleği
(Liner)

14-600020-00-WH
B : 132.910
L : 257.500
D : 140.740
C : 8.250
F : 0.750
R : 10.700

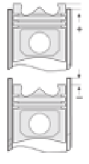


O-RING BİLGİ (O-Ring
Information)
24-35025-32/0
2x 129,50*4 FPM
1x 123*128*10,7 FPM



Silindir Kit
(Assembly Set)

89-109200-12-STD
89-71899-STD A



Piston - Blok Montaj
Yüksekliği
(Piston - Block
Assembly Height)

-0,35 / 0,50

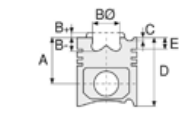




Motor Özellikleri
(Engine Specifications)

İmalatçı (Manufacturer):
Saa-Scania
Çap (Diameter): 115
FM Grup No: 7563

DN9-01
6 Sil. Dizel 8500cc
150 KW (204 PS)
G92, G93, P92, P93, R92,
R93
1985 - 1994



Piston Ölçüleri
(Piston Dimensions)

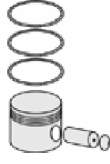
A : 87.700
B- : 22.150
BØ : 69.000
BX : 4.200
C1 : 0.300
C2 : 0.200
D : 139.400
E : 21.640

Pim: 50 x 92



Piston Özellikleri
(Piston Features)

Segman Taşıyıcı
(Ring Carrier)
Yağ Püskürtme Oyuğu
(Oil Jet Cut-out)



Piston Parça No
(Piston Part No)

87-961000-22
87-73722-STDB



Segman Seti
(Ring Set)

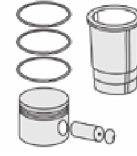
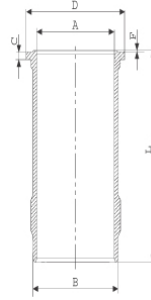
06-961000-80-STD
2.385 CKP IKA
2.385 STD
4.747 CR STD

Goetze® LKZ-Ring®



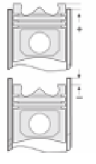
Silindir Gömleği
(Liner)

14-374990-00-WH
B : 130.000
L : 270.500
D : 137.300
C : 8.200
F : 0.800



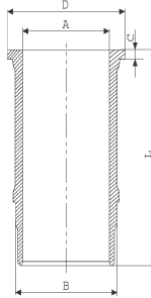
Silindir Kit
(Assembly Set)

88-961000-22-STD
88-73722-STDB



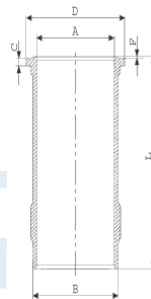
Piston - Blok Montaj
Yüksekliği
(Piston - Block
Assembly Height)

14-608890-00-WH
B : 127.900
L : 265.600
D : 140.820
C : 10.260
R : 19.000



88-961000-32-STD
88-73722-STDC

14-374990-00-WH
B : 130.000
L : 270.500
D : 137.300
C : 8.200
F : 0.800





SCANIA - Ø 127

06-347100-80-STD



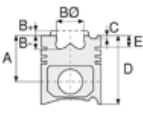
Motor Özellikleri
(Engine Specifications)

İmalatçı (Manufacturer):
SCANIA

Çap (Diameter): Ø 127
FM Grup No: 7503

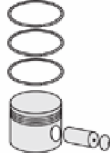
D/DS 11

6 Sil. Dizel 11020cc 16:1
B76, CF76, CR76, L110,
L76, LB110, LBS110, LS110
1967 - 1973



Piston Ölçüleri
(Piston Dimensions)

Piston Özellikleri
(Piston Features)







Piston Parça No
(Piston Part No)



Segman Seti
(Ring Set)

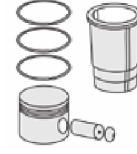
06-347100-80-STD

2.385  CK KV1
2.385  STD
2.385  STD
6.335  CR STD

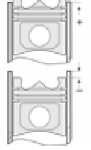
Goetze® LKZ-Ring®



Silindir Gömleği
(Liner)



Silindir Kit
(Assembly Set)



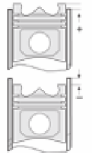
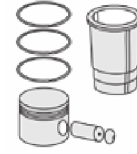
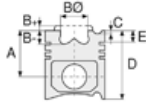
Piston - Blok Montaj
Yüksekliği
(Piston - Block
Assembly Height)





SAAB-SCANIA - Ø 127

06-348000-80-STD



Motor Özellikleri
(Engine Specifications)

Piston Ölçüleri
(Piston Dimensions)

Piston Parça No
(Piston Part No)

Segman Seti
(Ring Set)

Silindir Gömleği
(Liner)

Silindir Kit
(Assembly Set)

Piston - Blok Montaj
Yüksekliği
(Piston - Block
Assembly Height)

İmalatçı (Manufacturer):
SAAB-SCANIA
Çap (Diameter): Ø 127
FM Grup No: 7504

D11-O1 LB24/26
6 Sil. Dizel 11020cc 149
Kw (203 PS) 15:1
LB111, LBS111, LBT111
1977 - 1980

D11-O2 LB20/22
6 Sil. Dizel 11020cc 149
Kw (203 PS) 15:1
LB111, LBS111, LBT111
1977 - 1980

D11 LB18/20/22/24/26
6 Sil. Dizel 11020cc 149
Kw (203 PS) 15:1
LB111, LBS111, LBT111
1977 - 1980

DS11-O1 LB21/24
6 Sil. Dizel 11020cc
202,5/245 Kw
(280/333 PS) 16:1
Turbo
LB111, LBS111, LBT111,
T112E, T112H
1977 - 1980

DS11-O2 LB23/26
6 Sil. Dizel 11020cc
202,5/245 Kw
(280/333 PS) 16:1
Turbo
LB111, LBS111, LBT111,
T112E, T112H
1977 - 1980

DS11-11 LB01/2
6 Sil. Dizel 11020cc
202,5/245 Kw
(280/333 PS) 16:1
Turbo
K414, K414B, K420,
K424, K425, K425B,
K435, LB111, LBS111,
LBT111, T112E, T112H
1977 - 1980

Piston Özellikleri
(Piston Features)

06-348000-80-STD

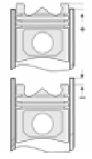
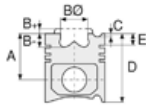
2.385  CK KV1
2.385  STD
2.385  STD
4.747  CR STD

Goetze® LKZ-Ring®



SAAB-SCANIA - Ø 127

06-348000-80-STD



Motor Özellikleri
(Engine Specifications)

Piston Ölçüleri
(Piston Dimensions)

Piston Parça No
(Piston Part No)

Segman Seti
(Ring Set)

Silindir Gömleği
(Liner)

Silindir Kit
(Assembly Set)

Piston - Blok Montaj
Yüksekliği
(Piston - Block
Assembly Height)

DS11-14 LO1/2/3

6 Sil. Dizel 11020cc

202,5/245 Kw

(280/333 PS) 16:1

Turbo

G112E, G112H, G112M,

K414, K414B, K420,

K424, K425, K425B,

K435, P112E, P112H,

P112M, R112E, R112H,

R112M, T112E, T112H

1981....

DS11-14 LO1/2/3

6 Sil. Dizel 11020cc

202,5/245 Kw

(280/333 PS) 16:1

Turbo

G112E, G112H, G112M,

K414, K414B, K420,

K424, K425, K425B,

K435, P112E, P112H,

P112M, R112E, R112H,

R112M, T112E, T112H

1981....

DS11-15 LO1/O2/O3

6 Sil. Dizel 11020cc

202,5/245 Kw

(280/333 PS) 16:1

Turbo

G112E, G112H, G112M,

K414, K414B, K420,

K424, K425, K425B,

K435, P112E, P112H,

P112M, R112E, R112H,

R112M, T112E, T112H

1981....

DS11-15 LO1/O2/O3

6 Sil. Dizel 11020cc

202,5/245 Kw

(280/333 PS) 16:1

Turbo

G112E, G112H, G112M,

K414, K414B, K420,

K424, K425, K425B,

K435, P112E, P112H,

P112M, R112E, R112H,

R112M, T112E, T112H

1981....



SAAB-SCANIA - Ø 127

06-348000-80-STD



Motor Özellikleri
(Engine Specifications)

DS11-18 LO1/O2

6 Sil. Dizel 11020cc

202,5/245 Kw

(280/333 PS) 16:1

Turbo

G112E, G112H, G112M,

K414, K414B, K420,

K424, K425, K425B,

K435, P112E, P112H,

P112M, R112E, R112H,

R112M, T112E, T112H

1981....

DS11-18 LO1/O2

6 Sil. Dizel 11020cc

202,5/245 Kw

(280/333 PS) 16:1

Turbo

G112E, G112H, G112M,

K414, K414B, K420,

K424, K425, K425B,

K435, P112E, P112H,

P112M, R112E, R112H,

R112M, T112E, T112H

1981....

DS11 LB21

6 Sil. Dizel 11020cc

202,5/245 Kw

(280/333 PS) 15:1

Turbo

K414, K414B, K420,

K424, K425, K425B,

K435, LB111, LBS111, LBT111

1977 - 1980

DS11 LB23/24/26

6 Sil. Dizel 11020cc

202,5/245 Kw

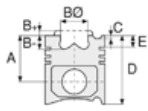
(280/333 PS) 16:1

Turbo

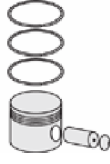
LB111, LBS111, LBT111,

T112E, T112H

1977 - 1980



Piston Ölçüleri
(Piston Dimensions)



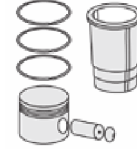
Piston Parça No
(Piston Part No)



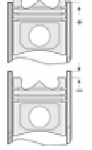
Segman Seti
(Ring Set)



Silindir Gömleği
(Liner)



Silindir Kit
(Assembly Set)



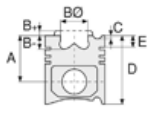
Piston - Blok Montaj
Yüksekliği
(Piston - Block
Assembly Height)



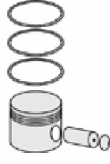


Motor Özellikleri
(Engine Specifications)

DSC11-01 L01/O2
6 Sil. Dizel 11020cc
202,5/245 Kw
(280/333 PS)
Turbocharged Intercooled
G112E, G112H, G112M,
K414, K414B, K420, K424,
K425, K425B, K435, P112E,
P112H, P112M, R112E, R112H,
R112M, T112E, T112H
1981....



Piston Ölçüleri
(Piston Dimensions)



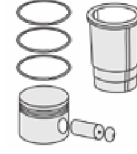
Piston Parça No
(Piston Part No)



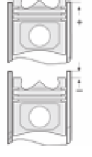
Segman Seti
(Ring Set)



Silindir Gömleği
(Liner)



Silindir Kit
(Assembly Set)



Piston - Blok Montaj
Yüksekliği
(Piston - Block
Assembly Height)





SCANIA - Ø 127

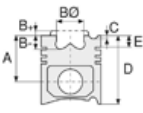
06-961900-20-STD



Motor Özellikleri
(Engine Specifications)

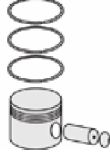
İmalatçı (Manufacturer):
SCANIA
Çap (Diameter): Ø 127
FM Grup No: 7506

DSC11-01 L01/O2
6 Sil. Dizel 11020cc
202,5/245 Kw
(280/333 PS)
Turbocharged Intercooled
G112E, G112H, G112M,
K414, K414B, K420,
K424, K425, K425B,
K435, P112E, P112H,
P112M, R112E, R112H,
R112M, T112E, T112H
1969 - 1984



Piston Ölçüleri
(Piston Dimensions)

Piston Özellikleri
(Piston Features)



Piston Parça No
(Piston Part No)



Segman Seti
(Ring Set)

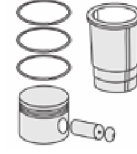
06-961900-20-STD

2.385  CR IKA
2.385  STD
4.747  CR STD

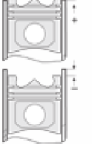
Goetze® LKZ-Ring®



Silindir Gömleği
(Liner)

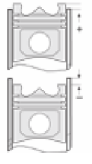
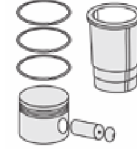
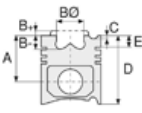


Silindir Kit
(Assembly Set)



Piston - Blok Montaj
Yüksekliği
(Piston - Block
Assembly Height)





Motor Özellikleri
(Engine Specifications)

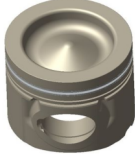
İmalatçı (Manufacturer):
Saab-Scania
Çap (Diameter): 127
FM Grup No: 7576

DI12 Euro2
6 Sil. Dizel 11700cc
235 Kw (321 HP) 17:1
ENDUSTRIYEL
(Industrial), MARIN

Piston Ölçüleri
(Piston Dimensions)

A : 85.200
B- : 18.620
BØ : 90.000
D : 133.910
E : 19.000

Pim: 54 x 106



Piston Özellikleri
(Piston Features)

Segman Taşıyıcı
(Ring Carrier)
Yağ Püskürtme Oyuğu
(Oil Jet Cut-out)

Piston Parça No
(Piston Part No)

86-71913-STD

Segman Seti
(Ring Set)

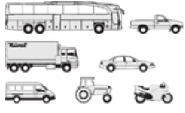
3.500
2.400
3.500

Silindir Gömleği
(Liner)

Silindir Kit
(Assembly Set)

Piston - Blok Montaj
Yüksekliği
(Piston - Block
Assembly Height)





Motor Özellikleri
(Engine Specifications)

İmalatçı (Manufacturer):
Saab-Scania
Çap (Diameter): 115
FM Grup No: 7505

D11

6 Sil. Dizel 11000cc
149/153 Kw (203/208 PS)
15:1

Tepe segmanı trapez
Motor No:880840-->
L110, L111, LB110, LB111,
LBS111, LS111, SBA111, T112E
1975 - 1981

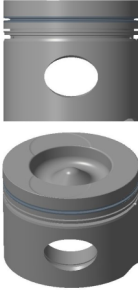
D11.01

6 Sil. Dizel 11018cc 149/
153 Kw (203/208 PS) 16:1
Tepe segmanı trapez
Motor No:880840-->
L110, L111, LB110, LB111,
LBS111, LS111, SBA111, T112E
1975 - 1981

Piston Ölçüleri
(Piston Dimensions)

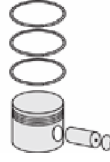
A : 98.760
B - : 27.060
BØ : 76.000
C1 : 0.500
D : 156.260
E : 23.270

Pim: 50 x 107,8



Piston Özellikleri
(Piston Features)

Segman Taşıyıcı
(Ring Carrier)
Yağ Püskürtme Oyuğu
(Oil Jet Cut-out)
Gözarası Konik
(Conical Eye Gap)



Piston Parça No
(Piston Part No)

87-892400-22
87-71901-STDA



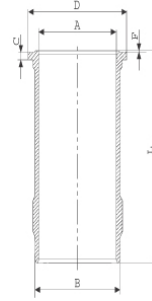
Segman Seti
(Ring Set)

06-892400-00-STD
3.160 CR KV1
2.385 CR STD
4.747 CR STD
Goetze® LKZ-Ring®

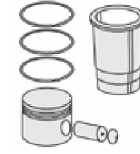


Silindir Gömleği
(Liner)

14-450850-00-WH
B : 140.000
L : 291.000
D : 153.800
C : 8.200
F : 0.800
R : 21.000

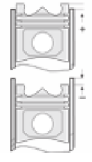


O-RING BİLGİ (O-Ring
Information)
24-35025-43/0
3x 139,5*4 FPM



Silindir Kit
(Assembly Set)

89-892400-22-STD
89-71901-STDA



Piston - Blok Montaj
Yüksekliği
(Piston - Block
Assembly Height)



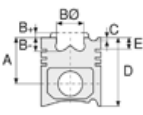


Motor Özellikleri
(Engine Specifications)

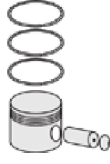
DS9-04
6 Sil. Dizel 8471cc
150 KW (204 PS)
TURBO
G82M, P82M

DS9-01L01
6 Sil. Dizel 8471cc
TURBO INTERCOOLED
G92H, G92M, P92H,
P92HB, P92M, P92MA,
R92H, R92M

DSC9-01L02
6 Sil. Dizel 8471cc
TURBO INTERCOOLED
G92H, G92M, P92H,
P92HB, P92M, P92MA,
R92H, R92M



Piston Ölçüleri
(Piston Dimensions)



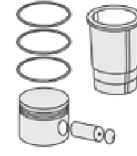
Piston Parça No
(Piston Part No)



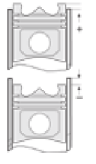
Segman Seti
(Ring Set)



Silindir Gömleği
(Liner)



Silindir Kit
(Assembly Set)



Piston - Blok Montaj
Yüksekliği
(Piston - Block
Assembly Height)





Motor Özellikleri
(Engine Specifications)

İmalatçı (Manufacturer):
Saab-Scania
Çap (Diameter): 127
FM Grup No: 7508

**DS 11.01 DSI 11.01 /
DS 11.111-112**

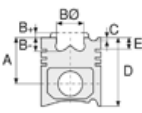
6 Sil. Dizel 11018cc
202 Kw (275 PS) 15:1
Turbo Tepe segmanı
trapez
L110S, LB110S, LBS110S,
LS110S
1973 - 1975

**DS 11.01/2/14/15/18
DSC 11.01/2/4/11**

6 Sil. Dizel 11018cc
206/245 Kw (280/333 PS)
15:1
Turbocharged Intercooled
Tepe segmanı trapez
B116, G112M, K112, L111S,
LB111S, LBS111S, LBT111BB,
LBT111FB, LBT111S, LS111S,
LT111BB, LT111S, P112E,
P112H, P112M, P112MA,
R112, R112E, R112H, R112M,
R112MA, SBAT111, T112E,
T112H
1975 - 1978

**DS 11.01/2/14/15/18
DSC 11.01/2/4/11**

6 Sil. Dizel 11018cc
206/245 Kw (280/333 PS)
1
5:1
Turbocharged Intercooled
Tepe segmanı trapez
B116, G112M, K112, L111S,
LB111S, LBS111S, LBT111BB,
LBT111FB, LBT111S, LS111S,
LT111BB, LT111S, P112E,
P112H, P112M, P112MA,
R112, R112E, R112H, R112M,
R112MA, SBAT111, T112E,
T112H
1975 - 1978



Piston Ölçüleri
(Piston Dimensions)

A : 98.760
B- : 27.060
BØ : 76.000
C1 : 2.900
D : 156.260
E : 23.270

Pim: 50 x 107,8



Piston Özellikleri
(Piston Features)

Segman Taşıyıcı
(Ring Carrier)
Yağ Püskürtme Oyuğu
(Oil Jet Cut-out)
Gözarası Konik
(Conical Eye Gap)



Piston Parça No
(Piston Part No)

87-892400-42
87-71902-STDB



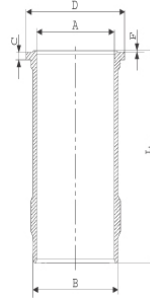
Segman Seti
(Ring Set)

06-892400-00-STD
3.160 CR KV1
2.385 CR STD
4.747 CR STD
Goetze® LKZ-Ring®

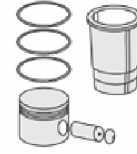


Silindir Gömleği
(Liner)

14-450850-00-WH
B : 140.000
L : 291.000
D : 153.800
C : 8.200
F : 0.800
R : 21.000

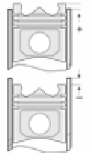


O-RING BİLGİ (O-Ring
Information)
24-35025-43/0
3x 139,5*4 FPM



Silindir Kit
(Assembly Set)

89-892400-42-STD
89-71902-STDB



**Piston - Blok Montaj
Yüksekliği**
(Piston - Block
Assembly Height)

+0,14/+0,15



Motor Özellikleri
(Engine Specifications)

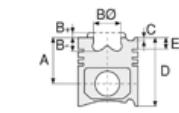
İmalatçı (Manufacturer):
Saab-Scania
Çap (Diameter): 127
FM Grup No: 7507

D11

6 Sil. Dizel 11000cc
149/153 Kw (203/208 PS)
15:1
Tepe segmanı düz
Motor No:880840-->
L110, L111, LB110, LB111,
LBS111, LS111, SBA111, T112E
1975 - 1981

D11.01

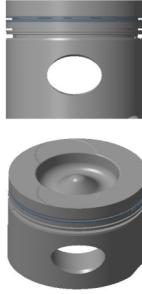
6 Sil. Dizel 11018cc
149/153 Kw (203/208 PS)
16:1
Tepe segmanı düz
Motor No:880840-->
L110, L111, LB110, LB111,
LBS111, LS111, SBA111, T112E
1975 - 1981



Piston Ölçüleri
(Piston Dimensions)

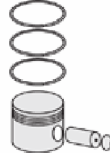
A : 98.760
B - : 27.060
BØ : 76.000
C1 : 0.500
D : 156.260
E : 23.600

Pim: 50 x 107,8



Piston Özellikleri
(Piston Features)

Segman Taşıyıcı
(Ring Carrier)
Yağ Püskürtme Oyuğu
(Oil Jet Cut-out)
Gözarası Konik
(Conical Eye Gap)



Piston Parça No
(Piston Part No)

87-990500-52
87-71903-STD A



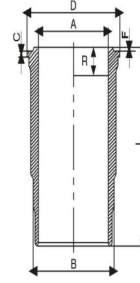
Segman Seti
(Ring Set)

06-990500-80-STD
2.385 CK KV1
2.385 STD
4.747 CR STD
Goetze® LKZ-Ring®

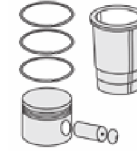


Silindir Gömleği
(Liner)

14-450850-00-WH
B : 140.000
L : 291.000
D : 153.800
C : 8.200
F : 0.800
R : 21.000

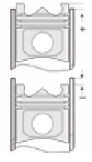


O-RING BİLGİ (O-Ring
Information)
24-35025-43/0
3x 139,5*4 FPM



Silindir Kit
(Assembly Set)

89-990500-52-STD
89-71903-STD A



Piston - Blok Montaj
Yüksekliği
(Piston - Block
Assembly Height)

-0,14/+0,15





Motor Özellikleri
(Engine Specifications)

İmalatçı (Manufacturer):
Saab-Scania
Çap (Diameter): 127
FM Grup No: 7509

DS 11.01 DSI 11.01

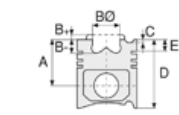
6 Sil. Dizel 11018cc
202 Kw (275 PS) 15:1
Turbo Tepe segmanı düz
L110S, LB110S, LBS110S,
LS110S
1973 - 1975

DS 11.01/2/14/15/18

DSC 11.01/2/4/11
6 Sil. Dizel 11018cc
206/245 Kw (280/333 PS)
15:1
Turbocharged Intercooled
Tepe segmanı düz
B116, G112M, K112, L111S,
LB111S, LBS111S, LBT111BB,
LBT111FB, LBT111S, LS111S,
LT111BB, LT111S, P112E,
P112H, P112M, P112MA,
R112, R112E, R112H, R112M,
R112MA, SBAT111, T112E,
T112H
1975 - 1978

DS 11.01/2/14/15/18

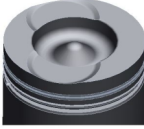
DSC 11.01/2/4/11
6 Sil. Dizel 11018cc
206/245 Kw (280/333 PS)
15:1
Turbocharged Intercooled
Tepe segmanı düz
B116, G112M, K112, L111S,
LB111S, LBS111S, LBT111BB,
LBT111FB, LBT111S, LS111S,
LT111BB, LT111S, P112E,
P112H, P112M, P112MA,
R112, R112E, R112H, R112M,
R112MA, SBAT111, T112E,
T112H
1975 - 1978



Piston Ölçüleri
(Piston Dimensions)

A : 98.760
B- : 27.060
BØ : 76.000
C1 : 2.900
D : 156.260
E : 23.600

Pim: 50 x 107,8



Piston Özellikleri
(Piston Features)

Segman Taşıyıcı
(Ring Carrier)
Yağ Püskürtme Oyuğu
(Oil Jet Cut-out)
Gözarası Konik
(Conical Eye Gap)



Piston Parça No
(Piston Part No)

87-990500-42
87-71904-STDC



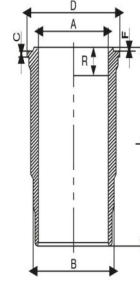
Segman Seti
(Ring Set)

06-990500-80-STD
2.385 CK KV1
2.385 CR STD
4.747 CR STD
Goetze® LKZ-Ring®

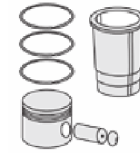


Silindir Gömleği
(Liner)

14-450850-00-WH
B : 140.000
L : 291.000
D : 153.800
C : 8.200
F : 0.800
R : 21.000

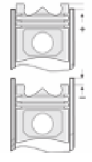


O-RING BİLGİ (O-Ring
Information)
24-35025-43/0
3x 139,5*4 FPM



Silindir Kit
(Assembly Set)

89-990500-42-STD
89-71904-STDC



Piston - Blok Montaj
Yüksekliği
(Piston - Block
Assembly Height)

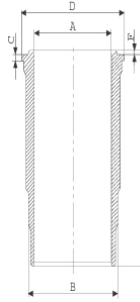
87-892500-22
87-73728-STDA

06-892500-00-STD
3.500 CK KV1
2.385 CR STD
4.747 CR STD
Goetze® LKZ-Ring®

14-450850-00 WH
O-RING BİLGİ (O-Ring
Information)
24-35025-43/0
3x 139,5*4 FPM

89-892500-22-STD
89-73728-STDA

14-451320-00-WH
B : 140.000
L : 291.000
D : 153.800
C : 8.200
F : 0.800

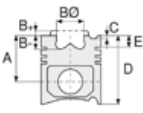


4 ADET O-RİNGLİ (With
4 O-Rings) /
24-35024-01/0
3x 139,5*4 FPM
1x 141*2,4 FPM

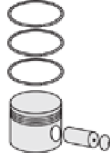




Motor Özellikleri
(Engine Specifications)



Piston Ölçüleri
(Piston Dimensions)



Piston Parça No
(Piston Part No)

87-962000-04
87-73728-STDB



Segman Seti
(Ring Set)

06-962000-20-STD

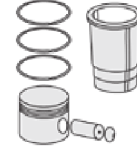
3.500  CR KV1
2.385  STD
4.747  CR STD

Goetze® LKZ-Ring®



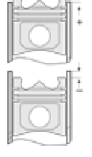
Silindir Gömleği
(Liner)

14-450850-00-WH
O-RING BİLGİ (O-Ring
Information)
24-35025-43/0
3x 139,5*4 FPM



Silindir Kit
(Assembly Set)

89-962000-04-STD
89-73728-STDB



Piston - Blok Montaj
Yüksekliği
(Piston - Block
Assembly Height)

14-451320-00-WH
4 ADET O-RİNGLİ (With
4 O-Rings) /
24-35024-01/0
3x 139,5*4 FPM
1x 141*2,4 FPM

89-962000-63-STD
89-73728-STDC





Motor Özellikleri
(Engine Specifications)

İmalatçı (Manufacturer):
Saab-Scania
Çap (Diameter): 127
FM Grup No: 7510

DS 14 - DS 14.141 / 142

8 Sil. Dizel 14200cc
257 Kw (350 PS) 15:1
Turbo
L140, LB140, LBS140,
LBT140, LS140, LT145
1969 - 1976

DS 14.01/02 DSI 14.01

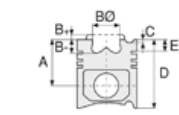
8 Sil. Dizel 14200cc
309/316 Kw (420/430 PS)
15,5:1
Turbocharged Intercooled
146, L141S, LB141S,
LBS141S, LBT141S, LS141S,
R142E, R142H, R142M,
R142MA, T112E, T142H
1983....

DS 14.01/02 DSI 14.01

8 Sil. Dizel 14200cc 3
09/316 Kw (420/430 PS)
15,5:1
Turbocharged Intercooled
146, L141S, LB141S,
LBS141S, LBT141S, LS141S,
R142E, R142H, R142M,
R142MA, T112E, T142H
1983....

DS 14.06

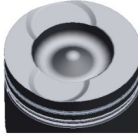
8 Sil. Dizel 14200cc
276/291 Kw (375/396 PS)
15,5:1
Turbo
141, 142, 146
1977....



Piston Ölçüleri
(Piston Dimensions)

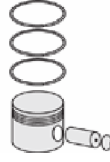
A : 94.670
B- : 26.200
BØ : 75.500
C1 : 2.920
D : 145.670
E : 23.330

Pim: 50 x 107,8



Piston Özellikleri
(Piston Features)

Segman Taşıyıcı
(Ring Carrier)
Yağ Püskürtme Oyuğu
(Oil Jet Cut-out)
Gözarası Konik
(Conical Eye Gap)



Piston Parça No
(Piston Part No)

87-892400-02
87-71905-STDA



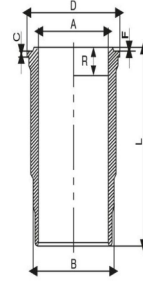
Segman Seti
(Ring Set)

06-892400-00-STD
3.160 CK KV1
2.385 CR STD
4.747 CR STD
Goetze® LKZ-Ring®

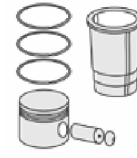


Silindir Gömleği
(Liner)

14-671680-00-WH
B : 140.000
L : 276.000
D : 156.000
C : 10.100
F : 0.400
R : 21.500

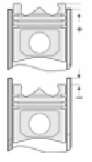


O-RING BİLGİ (O-Ring
Information)
24-35047-90/O
2x 140*4 FPM 70
1x 138*143*11
1x 1X TOMBAK
148,1*153,7*



Silindir Kit
(Assembly Set)

89-892400-02-STD
89-71905-STDA



Piston - Blok Montaj
Yüksekliği
(Piston - Block
Assembly Height)

87-892500-02
87-73729-STDA

06-892500-00-STD
3.500 CK KV1
2.385 CR STD
4.747 CR STD
Goetze® LKZ-Ring®

114-671680-00 WH
O-RİNG BİLGİ
24-35047-90/O
2x 140*4 FPM 70
1x 138*143*11
1x 1X TOMBAK
148,1*153,7*

89-892500-02-STD
89-73729-STDA

87-962000-34
87-73729-STDB

06-962000-20-STD
3.500 CR KV1
2.385 STD
4.747 CR STD
Goetze® LKZ-Ring®

14-671680-00 WH
O-RİNG BİLGİ
24-35047-90/O
2x 140*4 FPM 70
1x 138*143*11
1x 1X TOMBAK
148,1*153,7*

89-962000-34-STD
89-73729-STDB

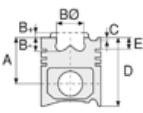




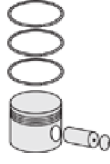
Motor Özellikleri
(Engine Specifications)

DSC 14.01/02
8 Sil. Dizel 14181cc
309/316 Kw (420/430 PS)
15,5:1
Turbocharged Intercooled
146, L141S, LB141S,
LBS141S, LBT141S, LS141S,
R142E, R142H, R142M,
R142MA, T112E, T142H
1983....

DSC 14.01/02
8 Sil. Dizel 14181cc
309/316 Kw (420/430 PS)
15,5:1
Turbocharged Intercooled
146, L141S, LB141S,
LBS141S, LBT141S, LS141S,
R142E, R142H, R142M,
R142MA, T112E, T142H
1983....



Piston Ölçüleri
(Piston Dimensions)



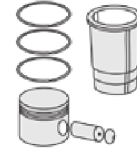
Piston Parça No
(Piston Part No)



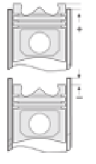
Segman Seti
(Ring Set)



Silindir Gömleği
(Liner)

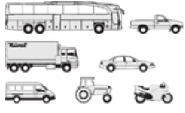


Silindir Kit
(Assembly Set)



Piston - Blok Montaj
Yüksekliği
(Piston - Block
Assembly Height)

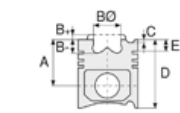




Motor Özellikleri
(Engine Specifications)

İmalatçı (Manufacturer):
Saab-Scania
Çap (Diameter): 127
FM Grup No: 7511

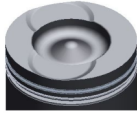
DS 11.34/73 -
DS 11-113 -
DSC 11.12/13/16/17/18
6 Sil. Dizel 11018cc
230/265 Kw (313/360 PS)
16:1
Turbocharged Intercooled
M113, P113, R113, T113
1987....



Piston Ölçüleri
(Piston Dimensions)

A : 98.760
B- : 24.500
BØ : 75.500
C1 : 2.960
D : 156.260
E : 23.400

Pim: 50 x 107,8



Piston Özellikleri
(Piston Features)

Segman Taşıyıcı
(Ring Carrier)
Gözarası Konik
(Conical Eye Gap)



Piston Parça No
(Piston Part No)

87-892500-33
87-71906-STDIC
0,20 mm Kısa (Short)
87-892500-32
87-71906-STDC



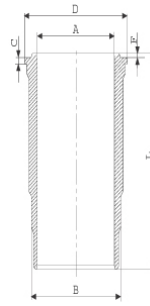
Segman Seti
(Ring Set)

06-892500-00-STD
3.500 CK KV1
2.385 CR STD
4.747 CR STD
Goetze® LKZ-Ring®

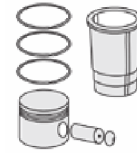


Silindir Gömleği
(Liner)

14-451320-00-WH
B : 140.000
L : 291.000
D : 153.800
C : 8.200
F : 0.800

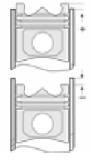


4 ADET O-RİNGLİ (With
4 O-Rings) /
24-35024-01/0
3x 139,5*4 FPM
1x 141*2,4 FPM



Silindir Kit
(Assembly Set)

89-892500-32-STD
89-71906-STDC



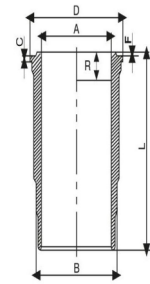
Piston - Blok Montaj
Yüksekliği
(Piston - Block
Assembly Height)

- 0,14 / + 0,15

87-962000-12
87-71906-STDA

06-962000-20-STD
3.500 CK KV1
2.385 CR STD
4.747 CR STD
Goetze® LKZ-Ring®

14-450850-00-WH
B : 140.000
L : 291.000
D : 153.800
C : 8.200
F : 0.800
R : 21.000



O-RING BİLGİ (O-Ring
Information)
24-35025-43/0
3x 139,5*4 FPM

89-962000-12-STD
89-71906-STDA

14-451320-00-WH
4 ADET O-RİNGLİ (With
4 O-Rings) /
24-35024-01/0
3x 139,5*4 FPM
1x 141*2,4 FPM

89-962000-14-STD
89-71906-STDB

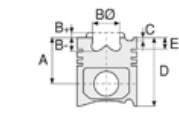




Motor Özellikleri
(Engine Specifications)

İmalatçı (Manufacturer):
Saab-Scania
Çap (Diameter): 127
FM Grup No: 7512

DSC 14.09/16 EURO1
8 Sil. Dizel 14181cc
368 Kw (500 PS) 17:1
Turbocharged Intercooled
R143, T143
1993....



Piston Ölçüleri
(Piston Dimensions)

A : 94.670
B- : 15.060
BØ : 89.400
C1 : 2.920
D : 146.670
E : 14.100

Pim: 50 x 107,8



Piston Özellikleri
(Piston Features)

Segman Taşıyıcı
(Ring Carrier)
Sert Anotlama
(Hard Anodizing)
Soğutma Kanallı
(Coolin Gallery)
Yağ Püskürtme Oyuğu
(Oil Jet Cut-out)
Gözarası Konik
(Conical Eye Gap)



Piston Parça No
(Piston Part No)

87-962000-32
87-71907-STD A



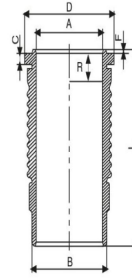
Segman Seti
(Ring Set)

06-962000-20-STD
3.500 CK KV1
2.385 STD
4.747 CR STD
Goetze® LKZ-Ring®

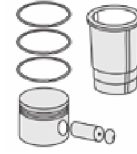


Silindir Gömleği
(Liner)

14-679600-00-WH
B : 140.000
L : 276.000
D : 156.000
C : 10.050
F : 0.400
R : 11.150

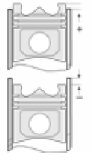


O-RING BİLGİ (O-Ring
Information)
24-35025-42/0
2x 139,5*4 FPM
1x 138*143*11 FPM



Silindir Kit
(Assembly Set)

89-962000-32-STD
89-71907-STD A



Piston - Blok Montaj
Yüksekliği
(Piston - Block
Assembly Height)

- 0,16 / - 0,54

87-892500-42
87-71907-STD B

06-892500-00-STD
3.500 CK KV1
2.385 CR STD
4.747 CR STD
Goetze® LKZ-Ring®

14-679600-00 WH
O-RING BİLGİ (O-Ring
Information)
24-35025-42/0
2x 139,5*4 FPM
1x 138*143*11 FPM

89-892500-42-STD
89-71907-STD B

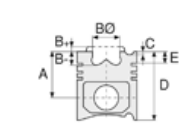




Motor Özellikleri
(Engine Specifications)

İmalatçı (Manufacturer):
Saab-Scania
Çap (Diameter): 127
FM Grup No: 7513

DSC 14.05/06
8 Sil. Dizel 14181cc
290/309 Kw (394/
420 PS) 16:1
Turbocharged Intercooled
R142, T142
1986....



Piston Ölçüleri
(Piston Dimensions)

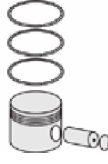
A : 94.670
B- : 24.000
BØ : 75.100
C1 : 2.920
D : 146.670
E : 23.250

Pim: 50 x 107,8



Piston Özellikleri
(Piston Features)

Segman Taşıyıcı
(Ring Carrier)
Yağ Püskürtme Oyuğu
(Oil Jet Cut-out)
Gözarası Konik
(Conical Eye Gap)



Piston Parça No
(Piston Part No)

87-962000-43
87-71908-STDA



Segman Seti
(Ring Set)

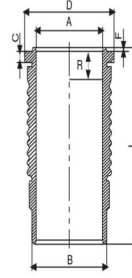
06-962000-20-STD
3.500 CR KV1
2.385 STD
4.747 CR STD

Goetze® LKZ-Ring®

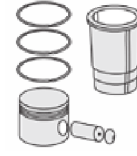


Silindir Gömleği
(Liner)

14-671680-00-WH
B : 140.000
L : 276.000
D : 156.000
C : 10.100
F : 0.400
R : 21.500

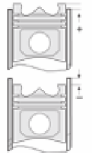


O-RING BİLGİ (O-Ring Information)
24-35047-90/O
2x 140*4 FPM 70
1x 138*143*11
1x 1X TOMBAK
148,1*153,7*



Silindir Kit
(Assembly Set)

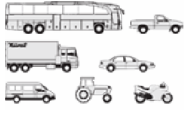
89-962000-43-STD
89-71908-STDA



Piston - Blok Montaj
Yüksekliği
(Piston - Block
Assembly Height)

- 0,16 / - 0,54



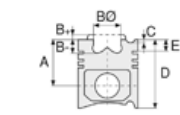


Motor Özellikleri
(Engine Specifications)

İmalatçı (Manufacturer):
Saab-Scania
Çap (Diameter): 127
FM Grup No: 7514

**DSC 11.21/23/35/36/
71/75**

6 Sil. Dizel 11018cc
235/266 Kw (320/362 PS)
17:1
Turbocharged Intercooled
M113, P113, R113, T113
1991 - 1994



Piston Ölçüleri
(Piston Dimensions)

A : 98.760
B- : 16.520
BØ : 89.450
C1 : 2.960
D : 156.260
E : 14.000

Pim: 50 x 107,8



Piston Özellikleri
(Piston Features)

Segman Taşıyıcı
(Ring Carrier)
Yağ Püskürtme Oyuğu
(Oil Jet Cut-out)
Gözarası Konik
(Conical Eye Gap)



Piston Parça No
(Piston Part No)

87-962000-72
87-71909-STDC



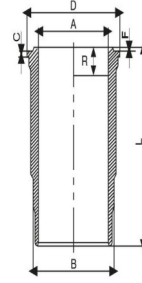
Segman Seti
(Ring Set)

06-962000-20-STD
3.500 CR KV1
2.385 STD
4.747 CR STD
Goetze® LKZ-Ring®



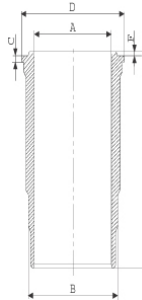
Silindir Gömleği
(Liner)

14-450040-00-WH
B : 140.000
L : 291.000
D : 154.000
C : 7.940
F : 0.900
R : 12.400

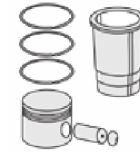


O-RING BİLGİ (O-Ring
Information)
24-35025-43/0
3x 139,5*4 FPM

14-450110-00-WH
B : 140.000
L : 291.000
D : 153.750
C : 7.930
F : 0.900
R : 13.200

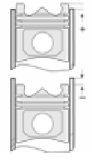


O-RİNG BİLGİ (O-Ring
Information)
24-35025-42/0
2x 139,5*4 FPM
1x 138*143*11 FPM



Silindir Kit
(Assembly Set)

89-962000-72-STD
89-71909-STDC

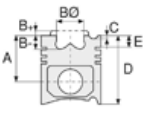


Piston - Blok Montaj
Yüksekliği
(Piston - Block
Assembly Height)

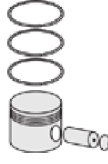




Motor Özellikleri
(Engine Specifications)



Piston Ölçüleri
(Piston Dimensions)



Piston Parça No
(Piston Part No)

87-892500-62
87-71909-STD



Segman Seti
(Ring Set)

06-892500-00-STD

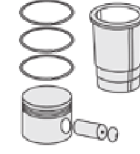
3.500  CK KV1
2.385  CR STD
4.747  CR STD

Goetze® LKZ-Ring®



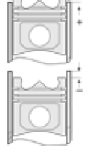
Silindir Gömleği
(Liner)

14-450040-00-WH
O-RING BİLGİ (O-Ring
Information)
24-35025-43/0
3x 139,5*4 FPM



Silindir Kit
(Assembly Set)

89-892500-62-STD
89-71909-STD



Piston - Blok Montaj
Yüksekliği
(Piston - Block
Assembly Height)

14-451450-00-WH
B : 139.500
L : 291.000
D : 153.800
C : 7.900
F : 0.800
R : 11.500

89-892500-12-STD
89-71909-STDK

14-450110-00-WH
O-RİNG BİLGİ (O-Ring
Information)
24-35025-42/0
2x 139,5*4 FPM
1x 138*143*11 FPM

89-892500-52-STD
89-71909-STDH

14-451450-00-WH

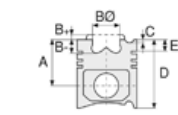




Motor Özellikleri
(Engine Specifications)

İmalatçı (Manufacturer):
SAAB - SCANIA
Çap (Diameter): 127
FM Grup No: 7541

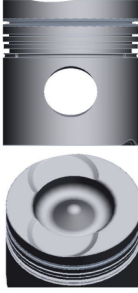
DS11
6 Sil. Dizel 11020cc
AGRICULTURAL,
INDUSTRIAL
1978....



Piston Ölçüleri
(Piston Dimensions)

A : 98.760
B- : 25.400
BØ : 76.000
C1 : 3.000
D : 156.260
E : 23.400

Pim: 50 x 107,92



Piston Özellikleri
(Piston Features)

Segman Taşıyıcı
(Ring Carrier)
Yağ Püskürtme Oyuğu
(Oil Jet Cut-out)
Gözarası Konik
(Conical Eye Gap)



Piston Parça No
(Piston Part No)

87-526900-02
87-71910-STD



Segman Seti
(Ring Set)

06-526900-00-STD

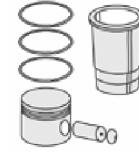
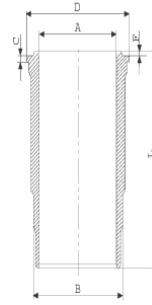
3.175  KVI
2.381  STD
2.381  STD
4.762  STD



Silindir Gömleği
(Liner)

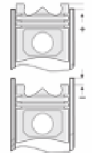
14-458190-00-WH

B : 139.930
L : 291.000
D : 153.800
C : 7.940
F : 0.800
R : 21.600



Silindir Kit
(Assembly Set)

89-962000-72-STD
89-71909-STD



Piston - Blok Montaj
Yüksekliği
(Piston - Block
Assembly Height)





Motor Özellikleri
(Engine Specifications)

İmalatçı (Manufacturer):
Saab-Scania
Çap (Diameter): 127
FM Grup No: 7547

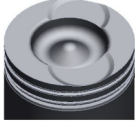
DSC14-03
8 Sil. Dizel 14200cc
320-337-346 Kw (435-
458-470 PS) 16:1
V8 TURBO INTERCOOLED
R 143L, R 143MA, R 143R,
T 143
1988....

DSC14-04
8 Sil. Dizel 14200cc
320-337-346Kw (435-
458-470 PS) 16:1
V8 TURBO
INTERCOOLED
R 143L, R 143R, T 143
1988....

Piston Ölçüleri
(Piston Dimensions)

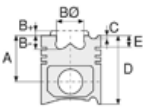
A : 94.670
B - : 23.850
BØ : 75.000
C1 : 2.820
D : 146.670
E : 14.100

Pim: 50 x 107,92



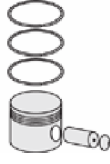
Piston Özellikleri
(Piston Features)

Segman Taşıyıcı
(Ring Carrier)
Sert Anotlama
(Hard Anodizing)
Soğutma Kanallı
(Coolin Gallery)
Yağ Püskürtme Oyuğu
(Oil Jet Cut-out)
Gözarası Konik
(Conical Eye Gap)



Piston Parça No
(Piston Part No)

87-962000-83
87-71912-STD



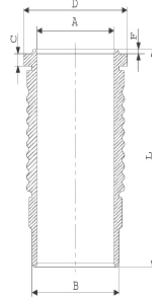
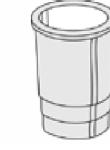
Segman Seti
(Ring Set)

06-962000-20-STD
3.500 CR KV1
2.385 STD
4.747 CR STD
Goetze® LKZ-Ring®



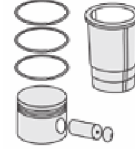
Silindir Gömleği
(Liner)

14-679320-00-WH
B : 140.000
L : 275.250
D : 156.000
C : 10.090
F : 0.400
R : 12.000

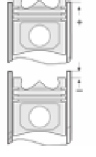


Silindir Kit
(Assembly Set)

88-962000-83-STD
88-71912-STD



Piston - Blok Montaj
Yüksekliği
(Piston - Block
Assembly Height)





Motor Özellikleri
(Engine Specifications)

İmalatçı (Manufacturer):
SAAB SCANIA
Çap (Diameter): Ø 127
FM Grup No: 7549

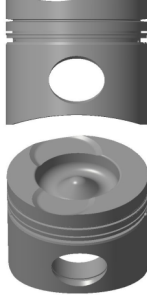
DSC14

8 Sil. Dizel 14181cc 15,5:1
TURBO İNTERCOOLED
L141S, LB141S, LBS141S,
LBT141S, LT146, RM142H,
RM142M, T142
1977....

Piston Ölçüleri
(Piston Dimensions)

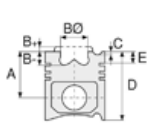
A : 94.670
B- : 26.200
BØ : 75.100
D : 146.670
E : 23.400

Pim: 50 x 107,8



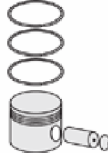
Piston Özellikleri
(Piston Features)

Segman Taşıyıcı
(Ring Carrier)
Yağ Püskürtme Oyuğu
(Oil Jet Cut-out)
Gözarası Konik
(Conical Eye Gap)



Piston Parça No
(Piston Part No)

87-892400-62
87-71915-STDA



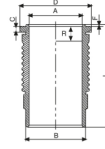
Segman Seti
(Ring Set)

06-892400-00-STD
3.160 CK KV1
2.385 CR STD
4.747 CR STD
Goetze® LKZ-Ring®



Silindir Gömleği
(Liner)

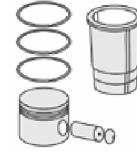
14-671680-00-WH
B : 140.000
L : 276.000
D : 156.000
C : 10.100
F : 0.400
R : 21.500



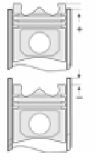
O-RING Bilgi
(O-RING Information)
24-35047-90/O
2x 140*4 FPM 70
1x 138*143*11
1x 1X TOMBAK
148,1*153,7*

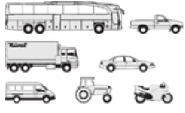
Silindir Kit
(Assembly Set)

89-892400-62-STD
89-71915-STDA



Piston - Blok Montaj
Yüksekliği
(Piston - Block
Assembly Height)





Motor Özellikleri
(Engine Specifications)

İmalatçı (Manufacturer):
SAAB SCANIA
Çap (Diameter): Ø 127
FM Grup No: 7542

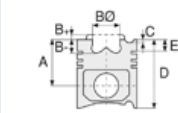
DS11-71C
6 Sil. Dizel 11020cc
TURBO
N113CLB, N113CRB
1990 - 1998

DSC11-16B01
6 Sil. Dizel 11020cc
Endüstriyel (Industrial)
1982 - 1998

DSC11-16B02
6 Sil. Dizel 11020cc
Endüstriyel (Industrial)
1982 - 1998

DSC11-18B01
6 Sil. Dizel 11020cc
Endüstriyel (Industrial)
1982 - 1998

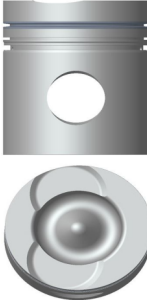
DS11-71C
6 Sil. Dizel 11020cc
N113CLB
1990 - 1998



Piston Ölçüleri
(Piston Dimensions)

A : 98.760
B- : 24.500
BØ : 76.000
D : 156.260
E : 23.300

Pim: 50 x 107,92



Piston Özellikleri
(Piston Features)

Segman Taşıyıcı
(Ring Carrier)
Gözarası Konik
(Conical Eye Gap)



Piston Parça No
(Piston Part No)

87-962000-94
87-71916-STD



Segman Seti
(Ring Set)

06-962000-20-STD

3.500 CR KVI
2.385 STD
4.747 CR STD

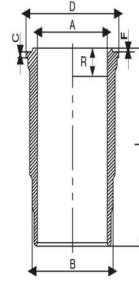
Goetze® LKZ-Ring®



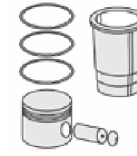
Silindir Gömleği
(Liner)

14-450850-00-WH

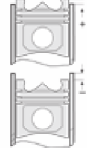
B : 140.000
L : 291.000
D : 153.800
C : 8.200
F : 0.800
R : 21.000



O-RING Bilgi
(O-RING Information)
24-35025-43/O
3x 139,5*4 FPM



Silindir Kit
(Assembly Set)



Piston - Blok Montaj
Yüksekliği
(Piston - Block
Assembly Height)





Motor Özellikleri
(Engine Specifications)

İmalatçı (Manufacturer):
SAAB SCANIA
Çap (Diameter): Ø 127
FM Grup No: 7580

SG9 A280
6 Sil. CNG 8974cc 200 HP
OSG
2008....

Piston Ölçüleri
(Piston Dimensions)

A : 92.040
B - : 27.350
BØ : 92.650
D : 136.040
E : 14.200

Pim: 54 x 106



Piston Özellikleri
(Piston Features)

Segman Taşıyıcı
(Ring Carrier)
Yağ Püskürtme Oyuğu
(Oil Jet Cut-out)
Burçlu Piston
(Bushing Piston)
Gözarası Konik
(Conical Eye Gap)



Piston Parça No
(Piston Part No)

87-892350-72
87-73727-STD



Segman Seti
(Ring Set)

06-892350-20-STD

3.500 CK KV1
2.385 GOE
3.500 CR STD

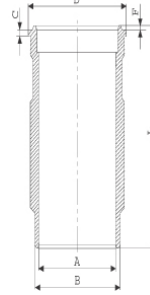
Yağ Segmanı Matkap
Delik / Goetze®
LKZ-Ring® (Oil Ring
Drill Hole / Goetze®
LKZ-Ring®)



Silindir Gömleği
(Liner)

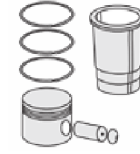
15-570070-00-WH

B : 139.500
L : 270.000
D : 151.000
C : 194.270
F : 0.400
R : 12.000



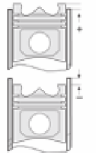
Kurum Giderme Ringli /
O-RING Bilgi
(With Soot Removal
Ring / O-RING
Information)
24-35025-43/O
3x 139,5*4 FPM

15-570070-00-WH
Kurum Giderme Ringli /
O-RING Bilgi
(With Soot Removal
Ring / O-RING
Information)
24-35046-60/O
1x147,5* EPDM PEROX
1X142,47*3,53 EPDM



Silindir Kit
(Assembly Set)

89-892350-72-STD
89-73727-STD



Piston - Blok Montaj
Yüksekliği
(Piston - Block
Assembly Height)

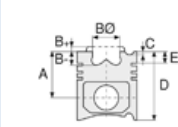




Motor Özellikleri
(Engine Specifications)

İmalatçı (Manufacturer):
SAAB SCANIA
Çap (Diameter): Ø 127
FM Grup No: 7557

DSC 11
6 Sil. Dizel 11020cc
220Kw (299 PS) 15:1
TURBO INTERCOOLED
Endüstriyel (Industrial)
1993....



Piston Ölçüleri
(Piston Dimensions)

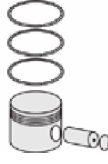
A : 98.760
B - : 19.800
BØ : 89.600
C1 : 3.000
D : 156.260
E : 23.200

Pim: 50 x 107,8



Piston Özellikleri
(Piston Features)

Segman Taşıyıcı
(Ring Carrier)
Sert Anotlama
(Hard Anodizing)
Yağ Püskürtme Oyuğu
(Oil Jet Cut-out)
Gözarası Konik
(Conical Eye Gap)



Piston Parça No
(Piston Part No)

87-962000-73
87-73730-STDA



Segman Seti
(Ring Set)

06-962000-20-STD

3.500 CR KVI
2.385 STD
4.747 CR STD

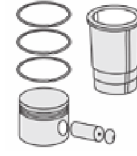
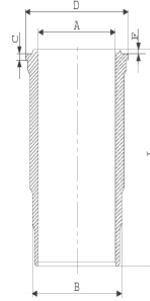
Goetze® LKZ-Ring®



Silindir Gömleği
(Liner)

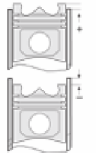
14-450390-00-WH

B : 140.000
L : 291.000
D : 153.700
C : 7.900
F : 0.800
R : 21.950



Silindir Kit
(Assembly Set)

88-962000-73-STD
88-73730-STDA



Piston - Blok Montaj
Yüksekliği
(Piston - Block
Assembly Height)





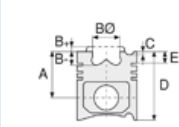
Motor Özellikleri
(Engine Specifications)

İmalatçı (Manufacturer):
SAAB SCANIA
Çap (Diameter): Ø 127
FM Grup No: 7538

DSC11-08
6 Sil. Dizel 11020cc
228Kw (310 PS) 17:1
TURBO INTERCOOLED
K 414, K 414B, K 420,
K 424, K 425, K 425B,
K 435, P 113
1987....

DSC11-10
6 Sil. Dizel 11020cc
228Kw (310 PS) 17:1
TURBO INTERCOOLED
K 414, K 414B, K 424,
K 425, K 425B, K 435,
P 113, R 113
1978....

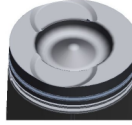
DSC11.70 N/S EURO II
6 Sil. Dizel 11020cc
280Kw (381 PS) 17:1
TURBO INTERCOOLED
MA 380A, R113
1082....



Piston Ölçüleri
(Piston Dimensions)

A : 98.760
B- : 22.700
BØ : 75.550
C1 : 2.960
D : 156.260
E : 23.300

Pim: 50 x 107,8



Piston Özellikleri
(Piston Features)

Segman Taşıyıcı
(Ring Carrier)
Yağ Püskürtme Oyuğu
(Oil Jet Cut-out)
Gözarası Konik
(Conical Eye Gap)






Piston Parça No
(Piston Part No)

87-962000-93
87-73731-STD



Segman Seti
(Ring Set)

06-962000-20-STD
3.500  CR KV1
2.385  STD
4.747  CR STD

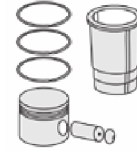
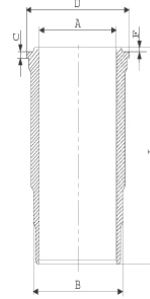
Goetze® LKZ-Ring®



Silindir Gömleği
(Liner)

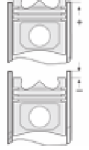
14-458190-00-WH

B : 139.930
L : 291.000
D : 153.800
C : 7.940
F : 0.800
R : 21.600



Silindir Kit
(Assembly Set)

88-962000-93-STD
88-73731-STD



Piston - Blok Montaj
Yüksekliği
(Piston - Block
Assembly Height)





Motor Özellikleri
(Engine Specifications)

İmalatçı (Manufacturer):
SAAB SCANIA
Çap (Diameter): Ø 127
FM Grup No: 7555

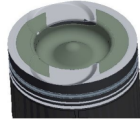
DSC11
6 Sil. Dizel 11020cc
220KW (299PS)
TURBO INTERCOOLED
Endüstriyel (Industrial)
1989....

DS11
6 Sil. Dizel 11020cc 15:1
TURBO
Endüstriyel (Industrial)
1969 - 1991

Piston Ölçüleri
(Piston Dimensions)

A : 98.760
B- : 26.740
BØ : 75.500
C1 : 2.960
C2 : 2.960
D : 156.260
E : 23.200

Pim: 50 x 107,8



Piston Özellikleri
(Piston Features)

Segman Taşıyıcı
(Ring Carrier)
Sert Anotlama
(Hard Anodizing)
Yağ Püskürtme Oyuğu
(Oil Jet Cut-out)
Gözarası Konik
(Conical Eye Gap)

Piston Parça No
(Piston Part No)

87-962000-84
87-73732-STD

Segman Seti
(Ring Set)

06-962000-20-STD

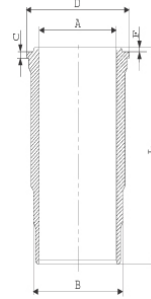
3.500 CR KV1
2.385 STD
4.747 CR STD

Goetze® LKZ-Ring®

Silindir Gömleği
(Liner)

14-450390-00WH

B : 140.000
L : 291.000
D : 153.700
C : 7.900
F : 0.800
R : 21.950



Silindir Kit
(Assembly Set)

88-962000-84-STD
88-73732-STD

Piston - Blok Montaj
Yüksekliği
(Piston - Block
Assembly Height)





Motor Özellikleri
(Engine Specifications)

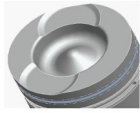
İmalatçı (Manufacturer):
SAAB SCANIA
Çap (Diameter): Ø 127
FM Grup No: 7581

**DSC 14.03/04/08/
09/10,LLK**
8 Sil. Dizel 14181cc
331-346 kW(450-470 PS)
143, Stationary Engine

Piston Ölçüleri
(Piston Dimensions)

A : 94.670
B- : 24.000
BØ : 75.050
C1 : 2.920
D : 146.670
E : 14.100

Pim: 50 x 107,8



Piston Özellikleri
(Piston Features)

Segman Taşıyıcı
(Ring Carrier)
Sert Anotlama
(Hard Anodizing)
Soğutma Kanallı
(Coolin Gallery)
Yağ Püskürtme Oyuğu
(Oil Jet Cut-out)
Gözarası Konik
(Conical Eye Gap)



Piston Parça No
(Piston Part No)

87-962000-52
87-73735-STDA



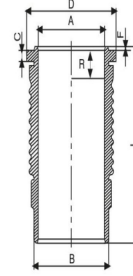
Segman Seti
(Ring Set)

06-962000-10-STD
3.500 CRP KV1
2.385 P STD
4.747 CRP STD

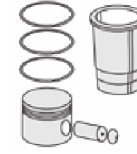


Silindir Gömleği
(Liner)

14-679600-00-WH
B : 140.000
L : 276.000
D : 156.000
C : 10.050
F : 0.400
R : 11.150

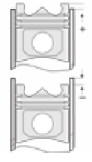


O-Ring Bilgi
(O-RING Information)
24-35025-42/O
2x 139,5*4 FPM
1x 138*143*11 FPM



Silindir Kit
(Assembly Set)

89-962000-52-STD
89-73735-STDA



Piston - Blok Montaj
Yüksekliği
(Piston - Block
Assembly Height)

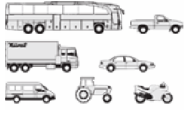
87-892500-72
87-73735-STDB

06-892500-30-STD

14-679600-00-WH
O-Ring Bilgi
(O-RING Information)
24-35025-42/O
2x 139,5*4 FPM
1x 138*143*11 FPM

89-892500-72-STD
89-73735-STDB





Motor Özellikleri
(Engine Specifications)

İmalatçı (Manufacturer):
SAAB SCANIA
Çap (Diameter): Ø 127
FM Grup No: 7573

DSC 12.02 Euro2

6 Sil. Dizel 11716cc
265 Kw(360 Ps) 18:1
K124, P124, R124, T124
1995....

DC 12.02.Euro 3

6 Sil. Dizel 11716cc
204-309 kw/400-420
PS 18:1
124K
2000....

DC 16.02. Euro 3

6 Sil. Dizel 15600cc
353KW-480 PS 18:1
164R-164T
2000....

Piston Ölçüleri
(Piston Dimensions)

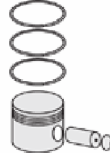
A : 85.040
B- : 22.150
BØ : 78.000
D : 129.040
E : 14.100

Pim: 54 x 106



Piston Özellikleri
(Piston Features)

Segman Taşıyıcı
(Ring Carrier)
Yağ Püskürtme Oyuğu
(Oil Jet Cut-out)
Gözarası Konik
(Conical Eye Gap)



Piston Parça No
(Piston Part No)

87-892350-22
87-73736-STD A



Segman Seti
(Ring Set)

06-892350-20-STD

3.500 CK KV1
2.385 GOE
4.747 CR STD

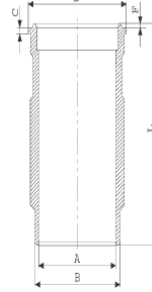
Yağ Segmanı Matkap
Delik / Goetze®
LKZ-Ring® (Oil Ring Drill
Hole / Goetze®
LKZ-Ring®)



Silindir Gömleği
(Liner)

14-579940-00-WH

B : 138.500
L : 271.120
D : 150.000
C : 194.270
F : 0.850
R : 8.250



O-Ring Bilgi
(O-RING Information)
24-35045-60/O
1x 138*144.75 *4.6 FPM
1x 148*4 FPM

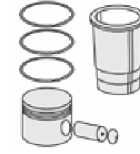
14-570100-00-WH

B : 139.000
L : 271.120
D : 150.000
C : 194.270
R : 12.000

Kurum Giderme Ringli
/ O-Ring Bilgi (With
Soot Removal Ring /
O-RING Information)
24-35046-60/O
1X142,47*3,53 EPDM

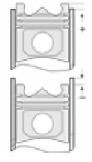
14-570101-00-WH

B : 138.500
L : 270.120
D : 150.500
C : 194.270
F : 0.850
R : 12.000



Silindir Kit
(Assembly Set)

89-892350-22-STD
89-73736-STD A



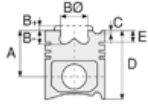
Piston - Blok Montaj
Yüksekliği
(Piston - Block
Assembly Height)

0/+0,25

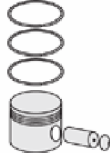




Motor Özellikleri
(Engine Specifications)



Piston Ölçüleri
(Piston Dimensions)



Piston Parça No
(Piston Part No)



Segman Seti
(Ring Set)



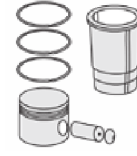
Silindir Gömleği
(Liner)

Flanş Çapı +0,50 Farklı
Çalışması (Flange
Diameter +0,50
Different Study)

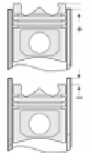
14-570102-00-WH

B : 138.500
L : 271.120
D : 151.000
C : 194.270
F : 0.850
R : 12.000

Flanş Çapı +1,00 Farklı
Çalışması (Flange
Diameter +1,00
Different Study)

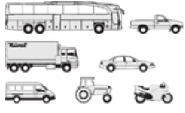


Silindir Kit
(Assembly Set)



Piston - Blok Montaj
Yüksekliği
(Piston - Block
Assembly Height)





Motor Özellikleri
(Engine Specifications)

İmalatçı (Manufacturer):
SAAB-SCANIA-DOOSAN
Çap (Diameter): Ø 127
FM Grup No: 7574

DC 11.03 Euro3

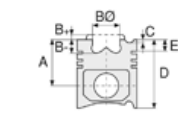
6 Sil. Dizel 10640cc
250 Kw(340 Ps) 18:1
Turbo, Intercooler 24 v
k114, P114, R114, T114
1996...

DC 11.04 Euro3 / DC

11.09 Euro3
6 Sil. Dizel 10640cc
280 Kw(381 PS) 18:1
Turbo, Intercooler 24 v
Century 12.35, k114,
P114, R114, T114
1996...

DC 9.19 / DC 9.20

5 Sil. Dizel 169 kw /
230 PS
DOOSAN İLE ORTAK
MOTOR
(With DOOSAN
Common Engine)
P 230-P 270



Piston Ölçüleri
(Piston Dimensions)

A : 92.040
B - : 21.150
BØ : 75.100
D : 136.040
E : 14.200

Pim : 54 x 106



Piston Özellikleri
(Piston Features)

Segman Taşıyıcı
(Ring Carrier)
Yağ Püskürtme Oyuğu
(Oil Jet Cut-Out)
Burçlu Piston
(Bushing Piston)
Göz Arası Konik
(Conical Eye Gap)



Piston Parça No
(Piston Part No)

87-892350-42
87-73737-STD



Segman Seti
(Ring Set)

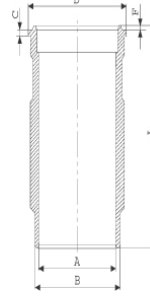
06-892350-20-STD
3.500 CK KV1
2.385 GOE
3.500 CR STD

Yağ Segmanı Matkap
Delikli /
(Oil Ring Drill Hole)
Goetze® LKZ-Ring®



Silindir Gömleği
(Liner)

14-579940-00-WH
B : 138.500
L : 271.120
D : 150.000
C : 194.270
F : 0.850
R : 8.250

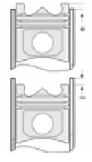


O-RİNG BİLGİ
(O-Ring Information)
24-35045-60/O
1x 138*144.75 *4.6 FPM
1x 148*4 FPM



Silindir Kit
(Assembly Set)

89-892350-42-STD
89-73737-STD



Piston - Blok Montaj
Yüksekliği
(Piston - Block
Assembly Height)

87-892300-42
87-73737-STD

06-892300-20-STD
3.500 CK KV1
2.385 P F14
3.500 CR STD

Goetze® LKZ-Ring®
Yağ Segmanı Matkap Delik
(Oil Ring Drill Hole)

14-579940-00-WH
O-RİNG BİLGİ
(O-Ring Information)
24-35045-60/O
1x 138*144.75 *4.6 FPM
1x 148*4 FPM

89-892300-42-STD
89-73737-STD





Motor Özellikleri
(Engine Specifications)

İmalatçı (Manufacturer):
SAAB SCANIA
Çap (Diameter): Ø 127
FM Grup No: 7579

DSC 14.13/15 Euro 2
8 Sil. Dizel 1418lcc
338-390 Kw (460-530 Ps)
V8
143, 144
1994....

Piston Ölçüleri
(Piston Dimensions)

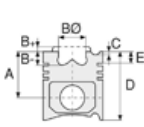
A : 94.670
B- : 19.590
BØ : 83.000
BX : 3.000
BY : 2.000
C1 : 2.920
D : 146.670
E : 14.100

Pim: 50 x 101,9



Piston Özellikleri
(Piston Features)

Segman Taşıyıcı
(Ring Carrier)
Çelik Plaka
(Steel Strut)
Sert Anotlama
(Hard Anodizing)
Yağ Püskürtme Oyuğu
(Oil Jet Cut-out)
Burçlu Piston
(Bushing Piston)
Gözarası Konik
(Conical Eye Gap)



Piston Parça No
(Piston Part No)

87-892350-62
87-73738-STD



Segman Seti
(Ring Set)

06-892350-20-STD

3.500 CK KV1
2.385 P F14
3.500 CR STD

Yağ Segmanı Matkap
Delikli / Goetze®
LKZ-Ring® (Oil Ring Drill
Perforated / Goetze®
LKZ-Ring®)

87-892300-12
87-73738-STD A

06-892300-20-STD

3.500 CK KV1
2.385 P F14
3.500 CR STD

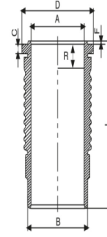
Goetze® LKZ-Ring® /
Yağ Segmanı Matkap
Delikli (Goetze®
LKZ-Ring® / Oil Ring Drill
Perforated)



Silindir Gömleği
(Liner)

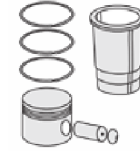
14-670070-00-WH

B : 139.500
L : 275.500
D : 155.860
C : 10.700
F : 0.380
R : 8.500



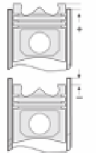
O-Ring Bilgi
(O-RING Information)
24-35025-42/O
2x 139,5*4 FPM
1x 138*143*11 FPM

14-670070-00-WH
O-Ring Bilgi
(O-RING Information)
24-35025-42/O
2x 139,5*4 FPM
1x 138*143*11 FPM



Silindir Kit
(Assembly Set)

89-892350-62-STD
89-73738-STD



Piston - Blok Montaj
Yüksekliği
(Piston - Block
Assembly Height)





Motor Özellikleri
(Engine Specifications)

İmalatçı (Manufacturer):
SAAB SCANIA
Çap (Diameter): Ø 127
FM Grup No: 7587

DC 11.03/11.04 /
11.08 EURO 3

6 Sil. Dizel 10640cc
250 Kw-380 PS
114K-P-R-T- OMNICITY

Piston Ölçüleri
(Piston Dimensions)

A : 92.040
B- : 21.150
BØ : 75.100
D : 136.040
E : 14.200

Pim: 54 x 106



Piston Özellikleri
(Piston Features)

Segman Taşıyıcı
(Ring Carrier)
Yağ Püskürtme Oyuğu
(Oil Jet Cut-out)
Gözarası Konik
(Conical Eye Gap)






Piston Parça No
(Piston Part No)

87-892350-82
87-73757-STD



Segman Seti
(Ring Set)

06-892350-20-STD
3.500  CK KV1
2.385  GOE
3.500  CR STD

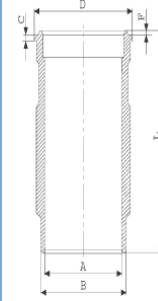
Yağ Segmanı Matkap
Delikli / Goetze®
LKZ-Ring® (Oil Ring Drill
Perforated / Goetze®
LKZ-Ring®)



Silindir Gömleği
(Liner)

14-570030-00-WH

B : 139.500
L : 271.120
D : 151.000
C : 194.270
F : 0.850
R : 8.250



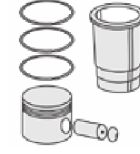
O-Ring Bilgi
(O-RING Information)
24-35046-60/O
1x 147,5*4 EPDM PEROX
1x 138*144,75*4,6 FPM

14-570030-00-WH
O-Ring Bilgi
(O-RING Information)
24-35046-60/O
1x 147,5*4 EPDM PEROX
1x 138*144,75*4,6 FPM

14-570031-00-WH

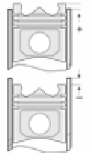
B : 139.500
L : 271.120
D : 151.500
C : 194.270
F : 0.850
R : 8.250

Flanş Çapı + 0,50 Farklı
Çalışması (Flange
Diameter + 0.50
Different Study)



Silindir Kit
(Assembly Set)

89-892350-82-STD
89-73757-STD

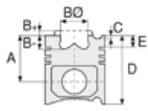


Piston - Blok Montaj
Yüksekliği
(Piston - Block
Assembly Height)

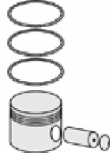




Motor Özellikleri
(Engine Specifications)



Piston Ölçüleri
(Piston Dimensions)



Piston Parça No
(Piston Part No)



Segman Seti
(Ring Set)

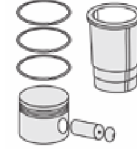


Silindir Gömleği
(Liner)

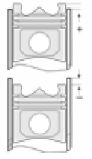
14-570032-00-WH

B : 139.500
L : 271.120
D : 152.000
C : 194.270
F : 0.850
R : 8.250

Flanş Çapı +1,00 Farklı
Çalışması (Flange
Diameter +1,00
Different Study)



Silindir Kit
(Assembly Set)



Piston - Blok Montaj
Yüksekliği
(Piston - Block
Assembly Height)





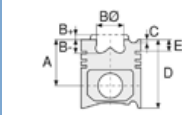
Motor Özellikleri
(Engine Specifications)

İmalatçı (Manufacturer):
SAAB SCANIA
Çap (Diameter): Ø 127
FM Grup No: 7516

DSC 12.01 EURO2
6 Sil. Dizel 11700cc
265/325 Kw (360/442 PS)
18:1
Turbocharged
Intercooled 24 Valve
R 164, R124 LA 400
1996....

DSC 12.02 EURO3
6 Sil. Dizel 11700cc
265/325 Kw (360/442 PS)
18:1
Turbocharged
Intercooled 24 Valve
R124 LA 400, R164
1996....

DSC 16.02 EURO3 V8
8 Sil. Dizel 15600cc
353/426 Kw (480/579 PS)
18:1
Turbocharged
Intercooled 32 Valve
R 164, R124 LA 400
1998 - 2002



Piston Ölçüleri
(Piston Dimensions)

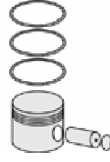
A : 85.210
B- : 22.150
BØ : 78.000
D : 122.710
E : 14.020

Pim: 54 x 106



Piston Özellikleri
(Piston Features)

Yağ Püskürtme Oyuğu
(Oil Jet Cut-out)
Gözarası Konik
(Conical Eye Gap)



Piston Parça No
(Piston Part No)

87-892350-02
87-75002-STD
Çift Parçalı Piston
(Two Piece Piston)



Segman Seti
(Ring Set)

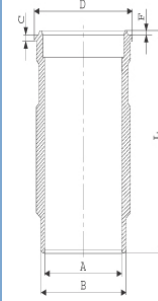
06-892350-20-STD
3.500 CK KV1
2.385 GOE
3.500 CR STD

Yağ Segmanı Matkap
Delikli / Goetze®
LKZ-Ring® (Oil Ring Drill
Perforated / Goetze®
LKZ-Ring®)

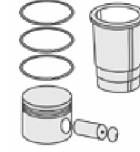


Silindir Gömleği
(Liner)

14-579940-00-WH
B : 138.500
L : 271.120
D : 150.000
C : 194.270
F : 0.850
R : 8.250

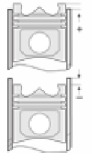


O-Ring Bilgi
(O-RING Information)
24-35045-60/O
1x 138*144.75*4.6 FPM
1x 148*4 FPM



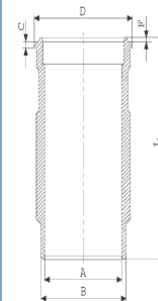
Silindir Kit
(Assembly Set)

89-892350-02-STD
89-75002-STD



Piston - Blok Montaj
Yüksekliği
(Piston - Block
Assembly Height)

14-570030-00-WH
B : 139.500
L : 271.120
D : 151.000
C : 194.270
F : 0.850
R : 8.250



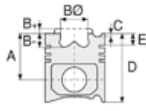
O-Ring Bilgi
(O-RING Information)
24-35046-60/O
1x 147,5*4 EPDM PEROX
1x 138*144,75*4,6 FPM

89-892350-12-STD
89-75002-STDB





Motor Özellikleri
(Engine Specifications)



Piston Ölçüleri
(Piston Dimensions)



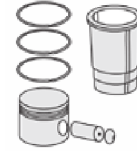
Piston Parça No
(Piston Part No)



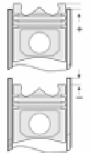
Segman Seti
(Ring Set)



Silindir Gömleği
(Liner)



Silindir Kit
(Assembly Set)



Piston - Blok Montaj
Yüksekliği
(Piston - Block
Assembly Height)

14-570100-00-WH
B : 139.000
L : 271.120
D : 150.000
C : 194.270
R : 12.000

Kurum Giderme Ringli
/ O-Ring Bilgi
(With Soot Removal
Ring / O-Ring
Information)
24-35046-60/O
1X142,47*3,53 EPDM

14-570100-00-WH
B : 139.000
L : 271.120
D : 150.000
C : 194.270
R : 12.000

Kurum Giderme Ringli
/ O-Ring Bilgi
(With Soot Removal
Ring / O-Ring
Information)
24-35046-60/O
1X142,47*3,53 EPDM

89-892350-52-STD
89-75002-STDH

89-892350-14-STD
89-75002-STDH

89-892300-02-STD
89-75002-STDH

87-892350-03
87-75002-STD1
0,20 mm Kısa (Short)

87-892300-02
87-75002-STDH

87-892600-32
87-75002-STDJ

06-892300-20-STD

3.500 CK KV1
2.385 P F14
3.500 CR STD

Goetze® LKZ-Ring® /
Yağ Segmanı Matkap
Delikli (Goetze® LKZ-Ring®
/ Oil Ring Drill
Perforated)

06-892600-20-STD

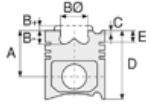
3.500 CK KV1
2.385 CRP F14
3.500 CK GOE

Goetze® LKZ-Ring® /
Yağ Segmanı Matkap
Delikli (Goetze® LKZ-Ring®
/ Oil Ring Drill
Perforated)

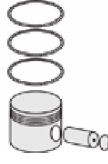




Motor Özellikleri
(Engine Specifications)



Piston Ölçüleri
(Piston Dimensions)



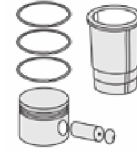
Piston Parça No
(Piston Part No)



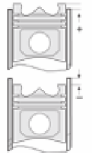
Segman Seti
(Ring Set)



Silindir Gömleği
(Liner)



Silindir Kit
(Assembly Set)



Piston - Blok Montaj
Yüksekliği
(Piston - Block
Assembly Height)

14-570030-00-WH

O-Ring Bilgi
(O-Ring Information)

24-35046-60/O

1x 147,5*4 EPDM PEROX

1x 138*144,75*4,6 FPM

14-570031-00-WH

B : 139.500

L : 271.120

D : 151.500

C : 194.270

F : 0.850

R : 8.250

Flanş Çapı +0,50 Farklı

Çalışması (Flange

Diameter +0,50

Different Study)

14-570032-00-WH

B : 139.500

L : 271.120

D : 152.000

C : 194.270

F : 0.850

R : 8.250

Flanş Çapı +1,00 Farklı

Çalışması (Flange

Diameter +1,00

Different Study)

14-570080-00-WH

O-Ring Bilgi

(O-Ring Information)

24-35050-30/O

1x 138*144,75*4,6 FPM

1x 148*4 FPM

14-570100-00-WH

Kurum Giderme Ringli

/ O-Ring Bilgi

(With Soot Removal

Ring / O-Ring

Information)

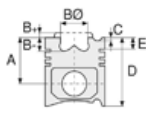
24-35046-60/O

1x142,47*3,53 EPDM

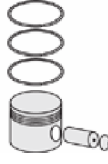




Motor Özellikleri
(Engine Specifications)



Piston Ölçüleri
(Piston Dimensions)



Piston Parça No
(Piston Part No)



Segman Seti
(Ring Set)



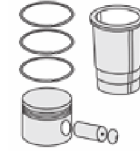
Silindir Gömleği
(Liner)

14-570101-00-WH
B : 138.500
L : 270.120
D : 150.500
C : 194.270
F : 0.850
R : 12.000

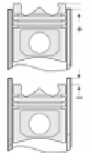
Flanş Çapı +0,50 Farklı
Çalışması (Flange
Diameter +0,50
Different Study)

14-570102-00-WH
B : 138.500
L : 271.120
D : 151.000
C : 194.270
F : 0.850
R : 12.000

Flanş Çapı +1,00 Farklı
Çalışması (Flange
Diameter +1,00
Different Study)



Silindir Kit
(Assembly Set)



Piston - Blok Montaj
Yüksekliği
(Piston - Block
Assembly Height)



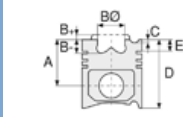


Motor Özellikleri
(Engine Specifications)

İmalatçı (Manufacturer):
SAAB SCANIA
Çap (Diameter): Ø 127
FM Grup No: 7577

DT12 O3 /11/12/17/19
6 Sil. Dizel
R 124 EURO 3
2006....

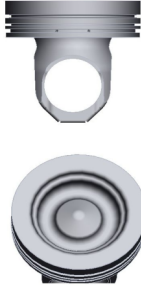
DT12/420 EURO 4
6 Sil. Dizel 420 PS
124
2009....



Piston Ölçüleri
(Piston Dimensions)

A : 85.210
B - : 22.450
BØ : 77.400
D : 122.710
E : 14.020

Pim: 54 x 106



Piston Özellikleri
(Piston Features)

Yağ Püskürtme Oyuğu
(Oil Jet Cut-out)
Gözarası Konik
(Conical Eye Gap)



Piston Parça No
(Piston Part No)

87-892600-02
87-75008-STD
87-892600-03
87-75008-STD1
0,20 mm Kısa (Short)



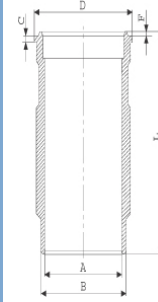
Segman Seti
(Ring Set)

06-892600-20-STD
3.500 CK KV1
2.385 CRP F14
3.500 CK GOE
Goetze® LKZ-Ring® /
Yağ Segmanı Matkap
Delikli (Goetze®
LKZ-Ring® / Oil Ring Drill
Perforated)



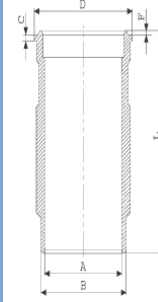
Silindir Gömleği
(Liner)

14-570060-00-WH
B : 139.500
L : 271.000
D : 151.000
C : 194.270
F : 0.970

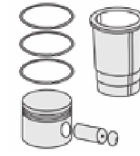


O-Ring Bilgi
(O-RING Information)
24-35046-60/O
1x 147,5*4 EPDM PEROX
1x 142,47*3,53 EPDM

14-570050-00-WH
B : 138.500
L : 271.120
D : 150.000
C : 5.000
F : 0.800

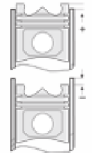


O-Ring Bilgi
(O-RING Information)
24-35042-60/O
1x 144*2,5 FPM
1x 148*4 FPM



Silindir Kit
(Assembly Set)

89-892600-12-STD
89-75008-STD A

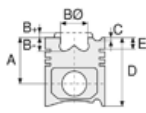


Piston - Blok Montaj
Yüksekliği
(Piston - Block
Assembly Height)

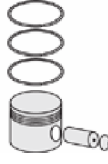




Motor Özellikleri
(Engine Specifications)



Piston Ölçüleri
(Piston Dimensions)



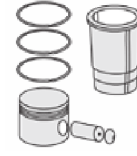
Piston Parça No
(Piston Part No)



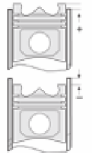
Segman Seti
(Ring Set)



Silindir Gömleği
(Liner)



Silindir Kit
(Assembly Set)



Piston - Blok Montaj
Yüksekliği
(Piston - Block
Assembly Height)

14-570050-00-WH
O-Ring Bilgi
(O-RING Information)
24-35042-60/O
1x 144*2,5 FPM
1x 148*4 FPM

14-570060-00-WH
O-Ring Bilgi
(O-RING Information)
24-35046-60/O
1x 147,5*4 EPDM PEROX
1x 142,47*3,53 EPDM

14-570061-00-WH
B : 139500.000
L : 271.000
D : 151.500
C : 194270.000
F : 970.000

Flanş Çapı +0,50 Farklı
Çalışması (Flange
Diameter +0,50
Different Study)

14-570062-00-WH
B : 139500.000
L : 271.000
D : 152.000
C : 194270.000
F : 0.970

Flanş Çapı +1,00 Farklı
Çalışması (Flange
Diameter +1,00
Different Study)

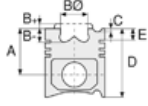
15-570050-00-WH
B : 138.500
L : 271.120
D : 150.000
C : 5.000
F : 0.800

O-Ringli
(With O-Ring)

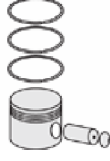




Motor Özellikleri
(Engine Specifications)



Piston Ölçüleri
(Piston Dimensions)



Piston Parça No
(Piston Part No)



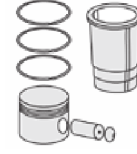
Segman Seti
(Ring Set)



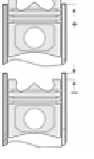
Silindir Gömleği
(Liner)

15-570060-00-WH
B : 139.900
L : 270.500
D : 150.960
C : 194.270
F : 0.970

O-Ringli
(With O-Ring)



Silindir Kit
(Assembly Set)



Piston - Blok Montaj
Yüksekliği
(Piston - Block
Assembly Height)





SCANIA - Ø 127

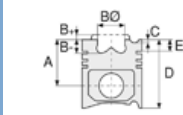
87-75013-STD



Motor Özellikleri
(Engine Specifications)

İmalatçı (Manufacturer):
SCANIA
Çap (Diameter): Ø 127
FM Grup No: 7586

DC 12.420 EURO 5
6 Sil. Dizel 11700cc
309 kw-420 PS 17:1
R 124 LA Euro 5, R 164
2013....



Piston Ölçüleri
(Piston Dimensions)

A : 85.250
B- : 23.000
BØ : 75.000
D : 122.750
E : 14.020

Pim: 54 x 106



Piston Özellikleri
(Piston Features)

Yağ Püskürtme Oyuğu
(Oil Jet Cut-out)
Gözarası Konik
(Conical Eye Gap)



Piston Parça No
(Piston Part No)

87-892350-32
87-75013-STD
Çift parçalı Piston
(Articulated Piston)



Segman Seti
(Ring Set)

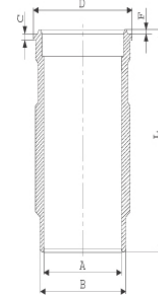
06-892350-20-STD
3.500 CK KV1
2.385 P F14
3.500 CR STD

Yağ Segmanı Matkap
Delikli / Goetze®
LKZ-Ring® (Oil Ring Drill
Perforated / Goetze®
LKZ-Ring®)

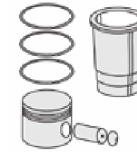


Silindir Gömleği
(Liner)

14-570030-00-WH
B : 139.500
L : 271.120
D : 151.000
C : 194.270
F : 0.850
R : 8.250

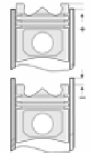


O-Ring Bilgi
(O-RING Information)
24-35046-60/O
1x 147,5*4 EPDM PEROX
1x 138*144,75*4,6 FPM



Silindir Kit
(Assembly Set)

89-892350-32-STD
89-75013-STD



Piston - Blok Montaj
Yüksekliği
(Piston - Block
Assembly Height)

87-892300-22
87-75013-STD

06-892300-20-STD
3.500 CK KV1
2.385 P F14
3.500 CR STD

Goetze® LKZ-Ring® /
Yağ Segmanı Matkap
Delikli (Goetze®
LKZ-Ring® / Oil Ring Drill
Perforated)

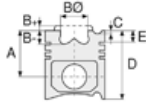
14-570030-00-WH
O-Ring Bilgi
(O-RING Information)
24-35046-60/O
1x 147,5*4 EPDM PEROX
1x 138*144,75*4,6 FPM

89-892300-22-STD
89-75013-STD

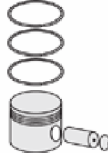




Motor Özellikleri
(Engine Specifications)



Piston Ölçüleri
(Piston Dimensions)



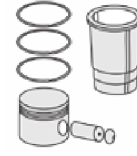
Piston Parça No
(Piston Part No)



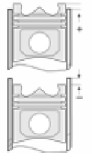
Segman Seti
(Ring Set)



Silindir Gömleği
(Liner)



Silindir Kit
(Assembly Set)



Piston - Blok Montaj
Yüksekliği
(Piston - Block
Assembly Height)

14-570030-00-WH

O-Ring Bilgi
(O-RING Information)

24-35046-60/O

1x 147,5*4 EPDM PEROX

1x 138*144,75*4,6 FPM

14-570031-00-WH

B : 139.500

L : 271.120

D : 151.500

C : 194.270

F : 0.850

R : 8.250

Flanş Çapı + 0,50 Farklı

Çalışması (Flange

Diameter + 0.50

Different Study)

14-570032-00-WH

B : 139.500

L : 271.120

D : 152.000

C : 194.270

F : 0.850

R : 8.250

Flanş Çapı +1,00 Farklı

Çalışması (Flange

Diameter +1,00

Different Study)





SCANIA - Ø 130

87-73749-STD



Motor Özellikleri
(Engine Specifications)

İmalatçı (Manufacturer):
SCANIA
Çap (Diameter): Ø 130
FM Grup No: 7585

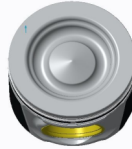
DC 13 PDE EURO5

6 Sil. Dizel 12700cc
294 kw-400 PS
25.6280 G 400 CB 8X4,
P,G,R,T 400
2013....

Piston Ölçüleri
(Piston Dimensions)

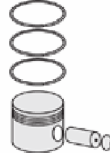
A : 82.050
B- : 23.100
BØ : 78.300
D : 128.050
E : 13.000

Pim: 58 x 104



Piston Özellikleri
(Piston Features)

Segman Taşıyıcı
(Ring Carrier)
Yağ Püskürtme Oyuğu
(Oil Jet Cut-out)
Burçlu Piston
(Bushing Piston)
Gözarası Konik
(Conical Eye Gap)



Piston Parça No
(Piston Part No)

87-892900-02
87-73749-STD



Segman Seti
(Ring Set)

06-892900-20-STD

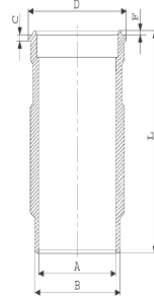
3.500 CK ST
3.000 CR F14
4.000 CK ST



Silindir Gömleği
(Liner)

14-570090-00-WH

B : 139.500
L : 270.000
D : 150.850
C : 194.270
F : 0.400

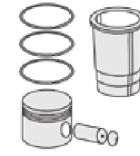


Kurum Giderme Ringli
/ O-Ring Bilgi
(With Soot Removal
Ring / O-Ring
Information)
24-35050-90/O
2X 142,47*3,53 FPM
PEROX
2X 147,50*4,00 EPDM
PEROX

14-570090-00-WH
Kurum Giderme Ringli
/ O-Ring Bilgi
(With Soot Removal
Ring / O-Ring
Information)
24-35050-90/O
2X 142,47*3,53 FPM
PEROX
2X 147,50*4,00 EPDM
PEROX

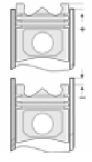
14-570091-00 WH
B : 139.500
D : 151.350
C : 194.270
F : 0.400

Flanş Çapı +0,50 Farklı
Çalışması (Flange
Diameter +0,50
Different Study)



Silindir Kit
(Assembly Set)

89-892900-02-STD
89-73749-STD

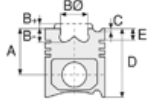


Piston - Blok Montaj
Yüksekliği
(Piston - Block
Assembly Height)

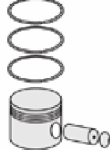




Motor Özellikleri
(Engine Specifications)



Piston Ölçüleri
(Piston Dimensions)



Piston Parça No
(Piston Part No)



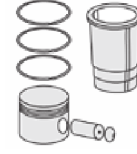
Segman Seti
(Ring Set)



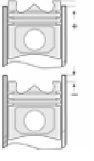
Silindir Gömleği
(Liner)

14-570092-00 WH
B : 139.500
L : 270.000
D : 151.850
C : 194.270
F : 0.400

Flanş Çapı +1,00 Farklı
Çalışması (Flange
Diameter +1,00
Different Study)



Silindir Kit
(Assembly Set)



Piston - Blok Montaj
Yüksekliği
(Piston - Block
Assembly Height)

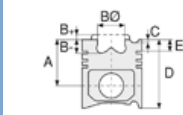




Motor Özellikleri
(Engine Specifications)

İmalatçı (Manufacturer):
SCANIA
Çap (Diameter): Ø 130
FM Grup No: 7588

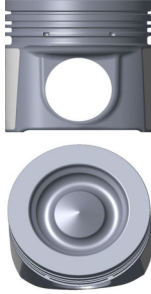
DC 13 PDE EURO 5
6 Sil. Dizel 12700cc
294 KW-400 PS
25.6280 G 400 CB
8X4, P,G,R,T 400
2013....



Piston Ölçüleri
(Piston Dimensions)

A : 82.210
B- : 23.100
D : 121.210
E : 10.000

Pim: 54 x 84



Piston Özellikleri
(Piston Features)

Yağ Püskürtme Oyuğu
(Oil Jet Cut-out)
Gözarası Konik
(Conical Eye Gap)



Piston Parça No
(Piston Part No)

87-892900-22
87-75528-STD
Monosteel Piston
(Çelik Piston)

87-892900-03
87-75528-STD1
0,20 mm Kısa (Short)



Segman Seti
(Ring Set)

06-892900-20-STD

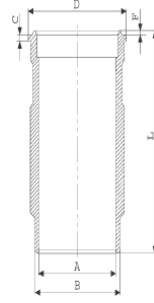
3.500 CK ST
3.000 CR F14
4.000 CK ST



Silindir Gömleği
(Liner)

14-570090-00-WH

B : 139.500
L : 270.000
D : 150.850
C : 194.270
F : 0.400

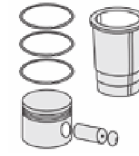


Kurum Giderme Ringli
/ O-Ring Bilgi
(With Soot Removal
Ring / O-Ring
Information)
24-35050-90/O
2X 142,47*3,53 FPM
PEROX
2X 147,50*4,00 EPDM
PEROX

14-570090-00-WH
Kurum Giderme Ringli
/ O-Ring Bilgi
(With Soot Removal
Ring / O-Ring
Information)
24-35050-90/O
2X 142,47*3,53 FPM
PEROX
2X 147,50*4,00 EPDM
PEROX

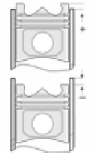
14-570091-00 WH
B : 139.500
D : 151.350
C : 194.270
F : 0.400

Flanş Çapı +0,50 Farklı
Çalışması (Flange
Diameter +0,50
Different Study)



Silindir Kit
(Assembly Set)

89-892900-22-STD
89-75528-STD

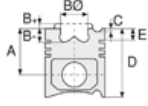


Piston - Blok Montaj
Yüksekliği
(Piston - Block
Assembly Height)

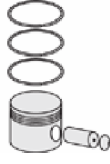




Motor Özellikleri
(Engine Specifications)



Piston Ölçüleri
(Piston Dimensions)



Piston Parça No
(Piston Part No)



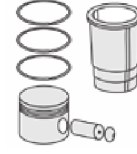
Segman Seti
(Ring Set)



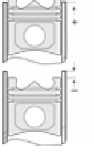
Silindir Gömleği
(Liner)

14-570092-00 WH
B : 139.500
L : 270.000
D : 151.850
C : 194.270
F : 0.400

Flanş Çapı +1,00 Farklı
Çalışması (Flange
Diameter +1,00
Different Study)



Silindir Kit
(Assembly Set)



Piston - Blok Montaj
Yüksekliği
(Piston - Block
Assembly Height)

