



STEYR - Ø 100

87-72031-STD



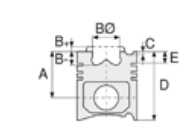
**Motor Özellikleri**  
(Engine Specifications)

İmalatçı (Manufacturer):  
STEYR  
Çap (Diameter): Ø 100  
FM Grup No: 7903

**WD 311**  
3 Sil. Dizel 2590cc  
40 / 41  
1982....

**WD 411**  
4 Sil. Dizel 3465cc  
41 / 42  
1982....

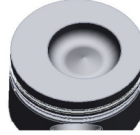
**WD 611**  
6 Sil. Dizel 5184cc  
87 / 88  
1982....



**Piston Ölçüleri**  
(Piston Dimensions)

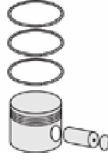
A : 58.400  
B- : 20.000  
BØ : 54.800  
BX : 5.000  
D : 98.900  
E : 17.000

Pim: 38 x 79



**Piston Özellikleri**  
(Piston Features)

Segman Taşıyıcı  
(Ring Carrier)  
Gözarası Düz  
(Flat Eye Gap)



**Piston Parça No**  
(Piston Part No)

87-362000-02  
87-72031-STD



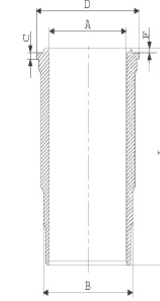
**Segman Seti**  
(Ring Set)

06-362000-10-STD  
2.500 CR KVI  
2.500 P STD  
4.000 CRP STD

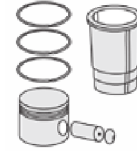


**Silindir Gömleği**  
(Liner)

14-450150-00-WH  
B : 109.400  
L : 197.000  
D : 118.000  
C : 9.000  
F : 1.100

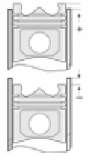


Dış Yüzeyi Krom Kaplı  
(Outer Surface  
Chrome Plated)



**Silindir Kit**  
(Assembly Set)

88-362000-02-STD  
88-72031-STD



**Piston - Blok Montaj**  
Yüksekliği  
(Piston - Block  
Assembly Height)





STEYR - Ø 100

87-72032-STD



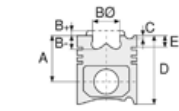
**Motor Özellikleri**  
(Engine Specifications)

İmalatçı (Manufacturer):  
STEYR  
Çap (Diameter): Ø 100  
FM Grup No: 7901

**WD 208 40-2**  
2 Sil. Dizel 1570cc  
22Kw(30 PS)  
8033 Trk

**WD 308 46-3 / 47-3**  
3 Sil. Dizel 2535cc  
34-37 Kw(45/50 PS)  
8043 S, 8050 S19,  
8053 S  
1978....

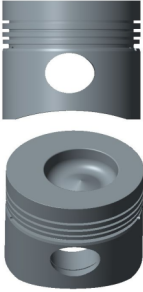
**WD 408,45-4**  
4 Sil. Dizel 3142cc  
52 Kw(70 PS)  
8073 S  
1968....



**Piston Ölçüleri**  
(Piston Dimensions)

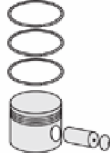
A : 63.400  
B- : 19.400  
BØ : 53.750  
BX : 4.500  
D : 103.900  
E : 17.300

Pim: 35 x 83



**Piston Özellikleri**  
(Piston Features)

Gözarası Düz  
(Flat Eye Gap)



**Piston Parça No**  
(Piston Part No)

87-087560-02  
87-72032-STD



**Segman Seti**  
(Ring Set)

06-087560-10-STD

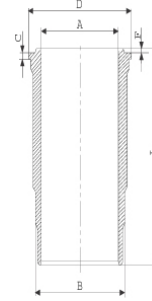
2.500 CRP IKA  
2.500 P STD  
2.500 P STD  
4.000 CRP STD



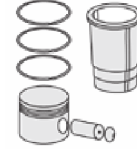
**Silindir Gömleği**  
(Liner)

14-450150-00-WH

B : 109.400  
L : 197.000  
D : 118.000  
C : 9.000  
F : 1.100

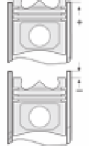


Dış Yüzeyi Krom Kaplı  
(Outer Surface  
Chrome Plated)



**Silindir Kit**  
(Assembly Set)

88-087560-02-STD  
88-72032-STD



**Piston - Blok Montaj**  
Yüksekliği  
(Piston - Block  
Assembly Height)

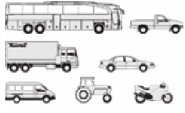
+0,69 / +0,87





STEYR - Ø 100

87-72042-STD



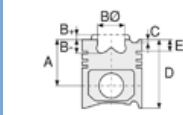
**Motor Özellikleri**  
(Engine Specifications)

İmalatçı (Manufacturer):  
STEYR  
Çap (Diameter): Ø 100  
FM Grup No: 7902

**WD 208 40-2**  
2 Sil. Dizel 1570cc  
22Kw(30 PS)  
8033 Trk

**WD 308 46-3 / 47-3**  
3 Sil. Dizel 2535cc  
34-37 Kw(45/50 PS)  
8043 S, 8050 S19,  
8053 S  
1978....

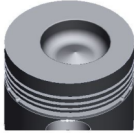
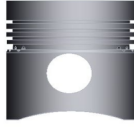
**WD 408,45-4**  
4 Sil. Dizel 3142cc  
52 Kw(70 PS)  
8073 S  
1968....



**Piston Ölçüleri**  
(Piston Dimensions)

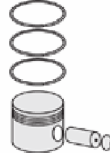
A : 63.400  
B- : 19.400  
BØ : 53.750  
BX : 4.500  
D : 103.900  
E : 17.300

Pim: 35 x 83



**Piston Özellikleri**  
(Piston Features)

Gözarası Düz  
(Flat Eye Gap)



**Piston Parça No**  
(Piston Part No)

87-361900-02  
87-72042-STD



**Segman Seti**  
(Ring Set)

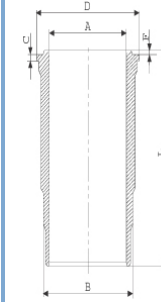
06-361900-10-STD

2.500 CRP STD  
2.500 P STD  
2.500 P STD  
4.000 CRP STD



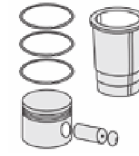
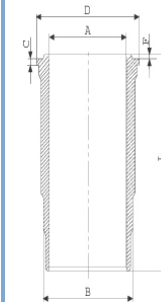
**Silindir Gömleği**  
(Liner)

14-451080-00-WH  
B : 109.400  
L : 197.000  
D : 118.000  
C : 9.000  
F : 1.100



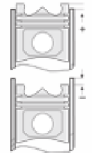
Dış Yüzeyi Krom Kaplı  
(Outer Surface  
Chrome Plated)

14-450490-00-WH  
B : 109.400  
L : 197.000  
D : 118.000  
C : 9.000  
F : 1.100



**Silindir Kit**  
(Assembly Set)

88-361900-22-STD  
88-72042-STDB



**Piston - Blok Montaj**  
Yüksekliği  
(Piston - Block  
Assembly Height)

+ 0,25 / + 0,28



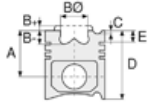


STEYR - Ø 100

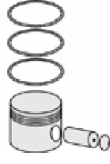
87-72042-STD



**Motor Özellikleri**  
(Engine Specifications)



**Piston Ölçüleri**  
(Piston Dimensions)



**Piston Parça No**  
(Piston Part No)

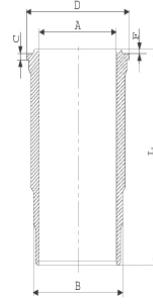


**Segman Seti**  
(Ring Set)

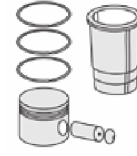


**Silindir Gömleği**  
(Liner)

14-450150-00-WH  
B : 109.400  
L : 197.000  
D : 118.000  
C : 9.000  
F : 1.100

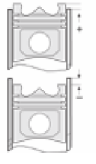


Dış Yüzeyi Krom Kaplı  
(Outer Surface  
Chrome Plated)



**Silindir Kit**  
(Assembly Set)

88-361900-42-STD  
88-72042-STD



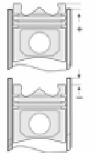
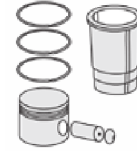
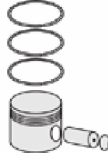
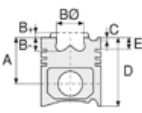
**Piston - Blok Montaj**  
**Yüksekliği**  
(Piston - Block  
Assembly Height)





STEYR - Ø 108

87-72038-STD



**Motor Özellikleri**  
(Engine Specifications)

İmalatçı (Manufacturer):  
STEYR  
Çap (Diameter): Ø 108  
FM Grup No: 7904

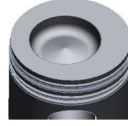
**WD 612,63**  
6 Sil. Dizel  
133 Kw(177 PS)  
1992....

**WD 612,65**  
6 Sil. Dizel  
154 Kw(210 PS)  
Turbo

**Piston Ölçüleri**  
(Piston Dimensions)

A : 66.900  
B- : 20.150  
BØ : 63.000  
BX : 5.000  
D : 122.400  
E : 13.200

Pim: 42 x 90



**Piston Özellikleri**  
(Piston Features)

Segman Taşıyıcı  
(Ring Carrier)  
Gözarası Düz  
(Flat Eye Gap)

**Piston Parça No**  
(Piston Part No)

87-896800-12  
87-72038-STD

**Segman Seti**  
(Ring Set)

06-896800-90-STD

3.000  CKP KV1  
2.500  P STD  
4.000  CRP STD

**Silindir Gömleği**  
(Liner)

**Silindir Kit**  
(Assembly Set)

**Piston - Blok Montaj**  
Yüksekliği  
(Piston - Block  
Assembly Height)





STEYR - Ø 126

06-362100-90-STD



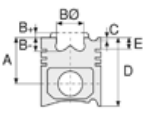
**Motor Özellikleri**  
(Engine Specifications)

İmalatçı (Manufacturer):  
STEYR

Çap (Diameter): Ø 126  
FM Grup No: 7905

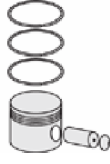
WD 815,60 / 61 /  
63 / 70

8 Sil. Dizel 11964cc  
236 Kw(320 PS) 16:1  
1290, 1291, 1490,  
1491, 1890  
1971...



**Piston Ölçüleri**  
(Piston Dimensions)

**Piston Özellikleri**  
(Piston Features)



**Piston Parça No**  
(Piston Part No)



**Segman Seti**  
(Ring Set)

06-362100-90-STD

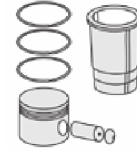
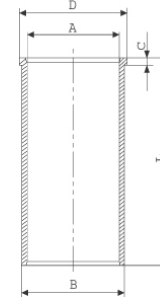
3.500  CKP KV1  
3.000  P STD  
4.000  CRP STD



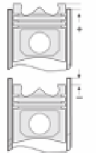
**Silindir Gömleği**  
(Liner)

14-025420-00-DH

B : 132.000  
L : 241.000  
D : 136.000  
C : 7.000



**Silindir Kit**  
(Assembly Set)



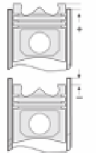
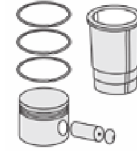
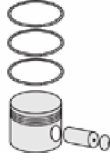
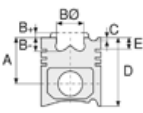
**Piston - Blok Montaj**  
Yüksekliği  
(Piston - Block  
Assembly Height)





STEYR - Ø 126

87-72041-STD



**Motor Özellikleri**  
(Engine Specifications)

İmalatçı (Manufacturer):  
STEYR  
Çap (Diameter): Ø 126  
FM Grup No: 7913

**WD615E2-3A**  
6 Sil. Dizel  
HOWO 3237

**Piston Ölçüleri**  
(Piston Dimensions)

A : 80.000  
B - : 19.500  
BØ : 75.200  
BX : 2.000  
BY : 2.500  
C1 : 0.600  
C2 : 0.600  
D : 123.000  
E : 14.000

Pim: 50 x 105



**Piston Özellikleri**  
(Piston Features)

Segman Taşıyıcı  
(Ring Carrier)  
Soğutma Kanallı  
(Coolin Gallery)  
Yağ Püskürtme Oyuğu  
(Oil Jet Cut-out)  
Gözarası Konik  
(Conical Eye Gap)

**Piston Parça No**  
(Piston Part No)

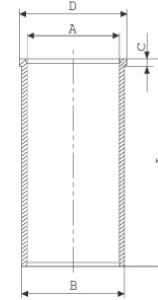
87-852400-02  
87-72041-STD

**Segman Seti**  
(Ring Set)

06-852400-20-STD  
3.500 CK KV1  
3.000 CRP GOE  
4.000 CRP STD

**Silindir Gömleği**  
(Liner)

14-021210-20-DH  
B : 130.000  
L : 241.000  
D : 136.300  
C : 4.740



14-021211-20-DH  
B : 130.250  
L : 241.000  
D : 136.550  
C : 5.105

Dıştan 0,25 mm Farklı  
(Outer Diameter  
0,25 mm Different)

14-021212-20-DH  
B : 130.500  
L : 241.000  
D : 136.500  
C : 5.105

Dış Çap 0,50 mm Farklı  
(Outer Diameter  
0,50 mm Different)

14-021213-00-DH  
B : 130.250  
L : 241.000  
D : 136.300  
C : 4.800

14-021214-30-DH  
B : 130.500  
L : 241.000  
D : 136.000  
C : 4.800

**Silindir Kit**  
(Assembly Set)

**Piston - Blok Montaj**  
Yüksekliği  
(Piston - Block  
Assembly Height)

