



SUZUKI - Ø 62

06-960100-00-STD



**Motor Özellikleri**  
(Engine Specifications)

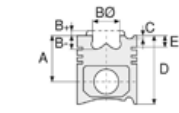
İmalatçı (Manufacturer):  
SUZUKI  
Çap (Diameter): Ø 62  
FM Grup No: 8101

**F5A**

3 Sil. Benzinli 543cc 9,2:1  
Alto 550 Van,  
Carry 550 Kamyon,  
Carry 550 Van,  
Fronte SS40, SJ 410  
1982 - 1985

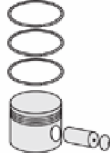
**F8A**

4 Sil. Benzinli 797cc 8,7:1  
Carry, Gemini 800,  
Jimny 800,  
ST90 Kamyon  
1978 - 1988



**Piston Ölçüleri**  
(Piston Dimensions)

**Piston Özellikleri**  
(Piston Features)



**Piston Parça No**  
(Piston Part No)



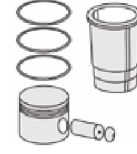
**Segman Seti**  
(Ring Set)

06-960100-00-STD

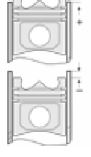
1.500 CRP IKA  
1.500 P STD  
2.800 P STD



**Silindir Gömleği**  
(Liner)



**Silindir Kit**  
(Assembly Set)



**Piston - Blok Montaj**  
Yüksekliği  
(Piston - Block  
Assembly Height)





SUZUKI - Ø 65,5

87-72051-STDA

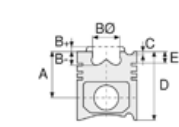


**Motor Özellikleri**  
(Engine Specifications)

İmalatçı (Manufacturer):  
SUZUKI  
Çap (Diameter): Ø 65,5  
FM Grup No: 8102

**F10A**

4 Sil. Benzinli 970cc  
33 Kw(45 HP-DIN) 8,8:1  
Süper Carry SK 410  
1985 - 1993



**Piston Ölçüleri**  
(Piston Dimensions)

A : 22.650  
B- : 2.200  
BØ : 52.500  
C1 : 4.200  
C2 : 5.500  
D : 55.050  
E : 4.000

Pim: 16 x 53,5



**Piston Özellikleri**  
(Piston Features)

Gözarası Düz  
(Flat Eye Gap)



**Piston Parça No**  
(Piston Part No)

87-960200-12  
87-72051-STDA  
  
87-960207-12  
87-72051 050A

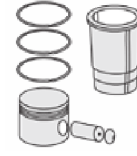


**Segman Seti**  
(Ring Set)

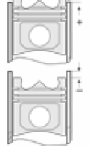
06-960200-30-STD  
06-960207-30 0,50 mm  
  
1.500 CRP IKA  
1.500 P STD  
2.800 CRP STD



**Silindir Gömleği**  
(Liner)



**Silindir Kit**  
(Assembly Set)



**Piston - Blok Montaj**  
Yüksekliği  
(Piston - Block  
Assembly Height)





SUZUKI - Ø 68,5

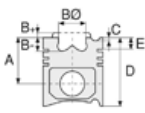
06-962900-00-STD



**Motor Özellikleri**  
(Engine Specifications)

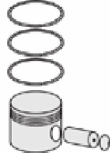
İmalatçı (Manufacturer):  
SUZUKI  
Çap (Diameter): Ø 68,5  
FM Grup No: 8103

**F8B / SS80**  
3 Sil. Benzinli 797cc  
Alto 80, Fronte  
1981 - 1994



**Piston Ölçüleri**  
(Piston Dimensions)

**Piston Özellikleri**  
(Piston Features)



**Piston Parça No**  
(Piston Part No)



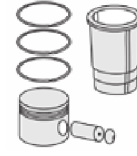
**Segman Seti**  
(Ring Set)

06-962900-00-STD  
06-962905-00 0,25 mm  
06-962907-00 0,50 mm  
06-962909-00 0,75 mm  
06-962911-00 1,00 mm

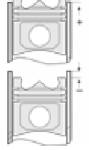
1.500  CRP IKA  
1.500  P STD  
2.800  P STD



**Silindir Gömleği**  
(Liner)



**Silindir Kit**  
(Assembly Set)



**Piston - Blok Montaj**  
Yüksekliği  
(Piston - Block  
Assembly Height)





SUZUKI - Ø 74

06-961800-00-STD



**Motor Özellikleri**  
(Engine Specifications)

İmalatçı (Manufacturer):  
SUZUKI  
Çap (Diameter): Ø 74  
FM Grup No: 8104

**G10**

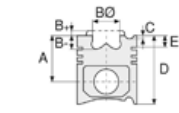
3 Sil. Benzinli 993cc  
1000 Van, Cultus 1000,  
Jimny 1000 Kamyon,  
Swift 1000  
1985 - 1989

**G13A**

4 Sil. Benzinli 1324cc 8,8:1  
Cultus 1300,  
Jimny 1300 Kamyon,  
Jimny 1300 Van,  
Samurai 1300, Swift 1300  
1984 - 1995

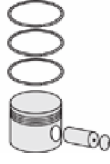
**G13B**

4 Sil. Benzinli 1298cc  
74 Kw  
DOHC 16v  
Cultus 1300 GTİ,  
Swift 1300 GTİ  
1989 - 1995



**Piston Ölçüleri**  
(Piston Dimensions)

**Piston Özellikleri**  
(Piston Features)



**Piston Parça No**  
(Piston Part No)



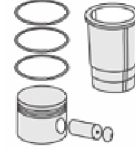
**Segman Seti**  
(Ring Set)

06-961800-00-STD

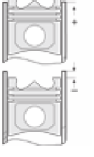
1.200 CRP KVI  
1.500 P STD  
2.800 P STD



**Silindir Gömleği**  
(Liner)



**Silindir Kit**  
(Assembly Set)



**Piston - Blok Montaj**  
Yüksekliği  
(Piston - Block  
Assembly Height)

