



TATA - Ø 75

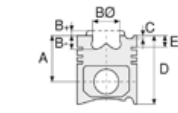
87-72251-STD



Motor Özellikleri
(Engine Specifications)

İmalatçı (Manufacturer):
TATA
Çap (Diameter): Ø 75
FM Grup No: 9301

475 IDI TCIC EURO III
4 Sil. Dizel 1405cc
70 PS 21:1
INDICA, INDIGO, MARINA



Piston Ölçüleri
(Piston Dimensions)

A : 42.950
B- : 1.900
D : 68.500
E : 9.100

Pim: 25 x 60



Piston Özellikleri
(Piston Features)

Segman Taşıyıcı
(Ring Carrier)
Yağ Püskürtme Oyuğu
(Oil Jet Cut-out)
Gözarası Konik
(Conical Eye Gap)



Piston Parça No
(Piston Part No)

87-859300-02
87-72251-STD



Segman Seti
(Ring Set)

06-859300-90-STD

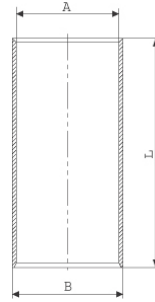
2.500 CKP KV1
2.000 P F14
3.000 CRP STD



Silindir Gömleği
(Liner)

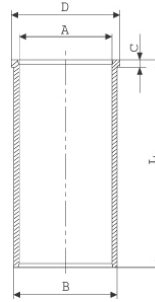
14-010710-00-D

B : 78.100
L : 136.500



14-021690-00-D

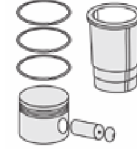
B : 78.100
L : 136.500
D : 79.600
C : 5.000



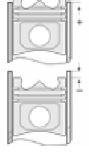
14-021691-00-D

B : 78.600
L : 136.500
D : 80.100
C : 5.500

Dış Çap 0,50 mm
Farklı Yarı Mamul
(Outer Diameter
0.50 mm Different
Semi-finished)



Silindir Kit
(Assembly Set)



Piston - Blok Montaj
Yüksekliği
(Piston - Block
Assembly Height)

- 1.Kertik Conta ile
(1.With Groove Gasket)
+0,45/+0,55
- 2.Kertik Conta ile
(2.With Groove Gasket)
+0,55/+0,65
- 3.Kertik Conta ile
(3.With Groove Gasket)
+0,65 /+0,75





TATA - Ø 83

87-72250-STD



Motor Özellikleri
(Engine Specifications)

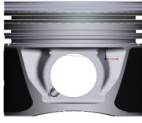
İmalatçı (Manufacturer):
TATA
Çap (Diameter): Ø 83
FM Grup No: 9302

4DLT TDI
4 Sil. Dizel 1948cc 90
Ps 21:1
Turbo
PICKUP TELCOLINE

Piston Ölçüleri
(Piston Dimensions)

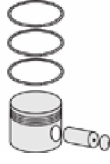
A : 47.000
B- : 3.200
D : 72.900
E : 9.100

Pim: 28 x 67



Piston Özellikleri
(Piston Features)

Segman Taşıyıcı
(Ring Carrier)
Yağ Püskürtme Oyuğu
(Oil Jet Cut-out)
Gözarası Konik
(Conical Eye Gap)



Piston Parça No
(Piston Part No)

87-859200-02
87-72250-STD



Segman Seti
(Ring Set)

06-859200-90-STD

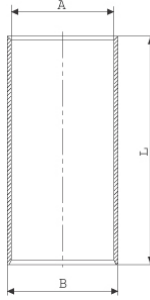
2.500 CKP KV1
2.000 P GOE
3.000 CRP STD



Silindir Gömleği
(Liner)

14-010720-00-D

B : 86.100
L : 149.500



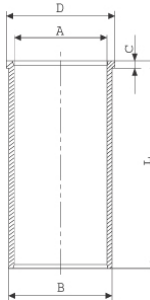
14-010721-00-D

B : 86.600
L : 149.500

Dış Çap 0,50 mm Farklı
(Outer Diameter
0,50 mm Different)

14-021060-00-D

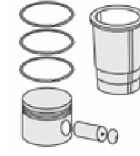
B : 86.100
L : 149.600
D : 87.500
C : 5.000



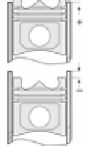
14-021061-00-D

B : 86.600
L : 149.600
D : 88.000
C : 5.500

Dış Çap 0,50 mm
Farklı Yarı Mamul
(Outer Diameter
0.50 mm Different
Semi-finished)



Silindir Kit
(Assembly Set)



Piston - Blok Montaj
Yüksekliği
(Piston - Block
Assembly Height)

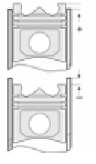
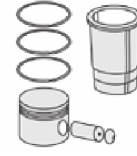
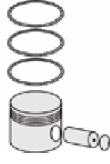
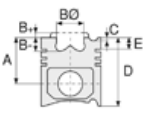
- 1.Kertik Conta ile
(1.With Groove Gasket)
+0,45/+0,55
- 2.Kertik Conta ile
(2.With Groove Gasket)
+0,56/+0,65
- 3.Kertik Conta ile
(3.With Groove Gasket)
+0,66 /+0,75





TATA - Ø 85

87-72252-STD



Motor Özellikleri
(Engine Specifications)

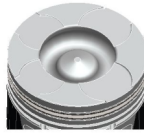
İmalatçı (Manufacturer):
TATA
Çap (Diameter): Ø 85
FM Grup No: 9303

2.2L DOHC VTT DiCOR
4 Sil. Dizel 2179cc 140 PS
XENON XT SUV
2010....

Piston Ölçüleri
(Piston Dimensions)

A : 47.000
B- : 17.000
BØ : 45.800
C1 : 0.900
C2 : 1.300
D : 72.000
E : 9.200

Pim: 31 x 69



Piston Özellikleri
(Piston Features)

Segman Taşıyıcı
(Ring Carrier)
Soğutma Kanallı
(Coolin Gallery)
Yağ Püskürtme Oyuğu
(Oil Jet Cut-out)
Gözarası Konik
(Conical Eye Gap)

Piston Parça No
(Piston Part No)

87-859500-02
87-72252-STD

Segman Seti
(Ring Set)

06-859500-00-STD
2.500 KKS KV1
2.000 P F14
3.000 CR GOE

Silindir Gömleği
(Liner)

Silindir Kit
(Assembly Set)

Piston - Blok Montaj
Yüksekliği
(Piston - Block
Assembly Height)

1,25 Conta ile
(With Gasket)
0,55/0,60

1,30 Conta ile
(With Gasket)
0,61/0,65

1,35 Conta ile
(With Gasket)
0,66/0,71

1,40 Conta ile
(With Gasket)
0,71/0,75

