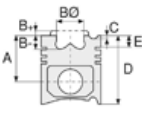




UTB - Ø 102

87-72111-STD A



Motor Özellikleri
(Engine Specifications)

Piston Ölçüleri
(Piston Dimensions)

Piston Parça No
(Piston Part No)

Segman Seti
(Ring Set)

Silindir Gömleği
(Liner)

Silindir Kit
(Assembly Set)

Piston - Blok Montaj
Yüksekliği
(Piston - Block
Assembly Height)

İmalatçı (Manufacturer):
UTB
Çap (Diameter): Ø 102
FM Grup No: 8302

A : 59.600
B- : 24.500
BØ : 48.550
D : 101.100
E : 18.600

87-895300-12
87-72111-STD A

06-895300-20-STD

14-011140-00-D

2.500 CR IKA
2.500 STD
5.000 STD

B : 106.000
L : 185.600

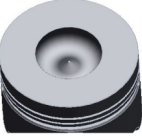
+0,70/+0,80

D 115, 050
3 Sil. Dizel 2696cc
39 Kw(53 PS)
Universal 533 DT

Pim: 32 x 84



D 115
3 Sil. Dizel 2340cc
33,1 Kw(45 PS)
Universal 453



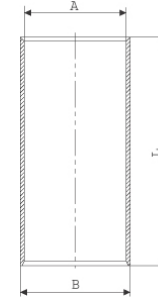
D 121,050
4 Sil. Dizel 3595cc
47 Kw(64 PS)
Universal 643 DT

Piston Özellikleri
(Piston Features)

Gözarası Düz
(Flat Eye Gap)

D 171,050
4 Sil. Dizel 3595cc
47 Kw(64 PS)
Universal 643

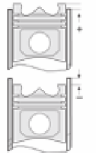
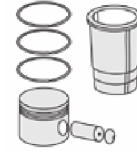
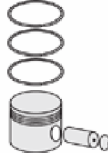
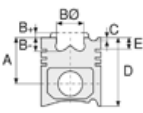
D 2404,062
4 Sil. Dizel 3759cc
61 Kw(83 PS)
Universal 833 DT





UTB - Ø 108

87-72112-STD



Motor Özellikleri
(Engine Specifications)

İmalatçı (Manufacturer):
UTB
Çap (Diameter): Ø 108
FM Grup No: 8303

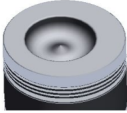
D 110

4 Sil. Dizel 4760cc48
Kw(65 PS) 17:1
U 50, U 500, U 650 M,
U 651, U 651 M

Piston Ölçüleri
(Piston Dimensions)

A : 87.000
B- : 23.500
BØ : 62.000
BX : 3.500
D : 141.000
E : 24.000

Pim: 40 x 88



Piston Özellikleri
(Piston Features)

Gözarası Düz
(Flat Eye Gap)

Piston Parça No
(Piston Part No)

87-381100-02
87-72112-STD

Segman Seti
(Ring Set)

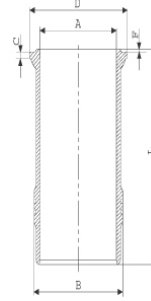
06-381100-10-STD

3.000 CRP STD
3.000 P STD
3.000 P STD
6.000 P STD
6.000 P STD

Silindir Gömleği
(Liner)

14-260500-00-WH

B : 125.000
L : 258.000
D : 132.000
C : 10.100
F : 1.300



Dış Yüzeyi
Fosfat Kaplı
(Outer Surface
Phosphate Coated)

Silindir Kit
(Assembly Set)

88-381100-02-STD
88-72112-STD

Piston - Blok Montaj
Yüksekliği
(Piston - Block
Assembly Height)

+0,50/+0,60

