



VM - Ø 105

06-897200-00-STD

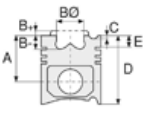


**Motor Özellikleri**  
(Engine Specifications)

İmalatçı (Manufacturer):  
VM

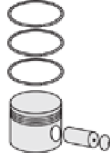
Çap (Diameter): Ø 105  
FM Grup No: 8401

**VM 1053**  
Dizel



**Piston Ölçüleri**  
(Piston Dimensions)

**Piston Özellikleri**  
(Piston Features)



**Piston Parça No**  
(Piston Part No)



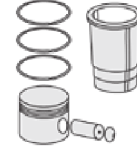
**Segman Seti**  
(Ring Set)

06-897200-00-STD

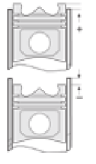
3.000 CRP KV1  
2.500 P STD  
2.500 P STD  
5.000 CRP STD



**Silindir Gömleği**  
(Liner)



**Silindir Kit**  
(Assembly Set)



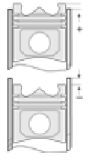
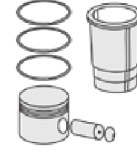
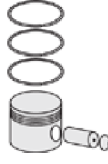
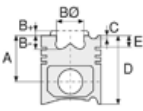
**Piston - Blok Montaj**  
Yüksekliği  
(Piston - Block  
Assembly Height)





VM - Ø 83

87-73443-STD



**Motor Özellikleri**  
(Engine Specifications)

**Piston Ölçüleri**  
(Piston Dimensions)

**Piston Parça No**  
(Piston Part No)

**Segman Seti**  
(Ring Set)

**Silindir Gömleği**  
(Liner)

**Silindir Kit**  
(Assembly Set)

**Piston - Blok Montaj**  
Yüksekliği  
(Piston - Block  
Assembly Height)

İmalatçı (Manufacturer):  
VM

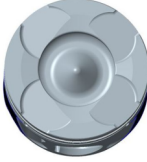
Çap (Diameter): Ø 83  
FM Grup No: 8403

**3.0L RA630**

6 Sil. Dizel 2987cc  
140-202 KW-187-271  
HP 15.5:1  
GRAND CHEROKEE  
2011....

A : 46.630  
B- : 15.800  
C1 : 1.170  
C2 : 1.220  
D : 72.630  
E : 10.000

Pim: 29,98 x 65



**Piston Özellikleri**  
(Piston Features)

Segman Taşıyıcı  
(Ring Carrier)  
Soğutma Kanallı  
(Coolin Gallery)  
Yağ Püskürtme Oyuğu  
(Oil Jet Cut-out)  
Gözarası Konik  
(Conical Eye Gap)

87-845700-02  
87-73443-STD

06-845700-00-STD

2.000 CK KV4  
2.000 P F14  
2.000 CR GOE





VM - Ø 92

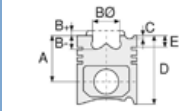
87-73438-STD



**Motor Özellikleri**  
(Engine Specifications)

İmalatçı (Manufacturer):  
VM  
Çap (Diameter): Ø 92  
FM Grup No: 8402

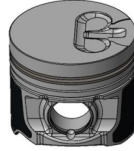
XJ-WJ  
6 Sil. Benzinli 2494cc  
GRAND CHEROKEE  
1999 - 2001



**Piston Ölçüleri**  
(Piston Dimensions)

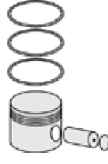
A : 51.200  
D : 81.250  
E : 14.000

Pim: 30 x 70



**Piston Özellikleri**  
(Piston Features)

Segman Taşıyıcı  
(Ring Carrier)  
Sert Anotlama  
(Hard Anodizing)  
Soğutma Kanallı  
(Coolin Gallery)  
Yağ Püskürtme Oyuğu  
(Oil Jet Cut-out)



**Piston Parça No**  
(Piston Part No)

87-134100-02  
87-73438-STD



**Segman Seti**  
(Ring Set)

06-134100-00-STD

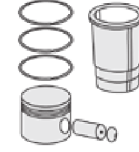
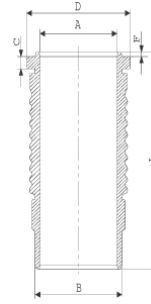
2.500 CKS KV1  
1.500 P KV1  
2.000 P F14



**Silindir Gömleği**  
(Liner)

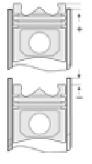
14-676420-00-WH

B : 101.500  
L : 168.000  
D : 110.000  
C : 8.900  
F : 1.200



**Silindir Kit**  
(Assembly Set)

88-134100-02-STD  
88-73438-STD



**Piston - Blok Montaj**  
Yüksekliği  
(Piston - Block  
Assembly Height)

