



WESTINGHOUSE - Ø 90

06-176300-20-STD

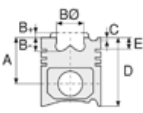


Motor Özellikleri
(Engine Specifications)

İmalatçı (Manufacturer):
WESTINGHOUSE
Çap (Diameter): Ø 90
FM Grup No: 8903

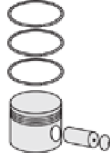
Hava Kompresörü (Air Compressor)

1 Sil. Dizel
Man D28, Mercedes
OM400, Mercedes
OM420, Mercedes OM440



Piston Ölçüleri
(Piston Dimensions)

Piston Özellikleri
(Piston Features)



Piston Parça No
(Piston Part No)



Segman Seti
(Ring Set)

06-176300-20-STD
06-176307-20 0,50 mm
06-176311-20 1,00 mm

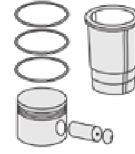
2.500 STD
2.500 STD
2.500 STD
4.000 STD

06-143100-00-STD
06-143107-00 0.50 mm
06-143111-00 1.00 mm

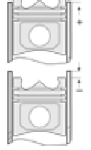
2.500 P GOE
2.500 P GOE
2.500 P GOE
4.000 P STD



Silindir Gömleği
(Liner)



Silindir Kit
(Assembly Set)



Piston - Blok Montaj
Yüksekliği
(Piston - Block
Assembly Height)





WESTINGHOUSE - Ø 63,5

06-990800-00-STD

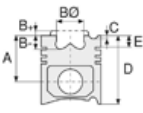


Motor Özellikleri
(Engine Specifications)

İmalatçı (Manufacturer):
WESTINGHOUSE
Çap (Diameter): Ø 63,5
FM Grup No: 8904

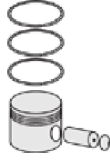
TU-FLO 500 2

Dizel
Volvo TD 100,
Volvo TD 120,
Volvo TD 121,
Volvo TD 50,
Volvo TD 60,
Volvo TD 70



Piston Ölçüleri
(Piston Dimensions)

Piston Özellikleri
(Piston Features)



Piston Parça No
(Piston Part No)



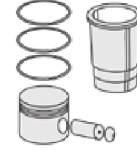
Segman Seti
(Ring Set)

06-990800-00-STD
06-990805-00 0,25 mm
06-990807-00 0,50 mm

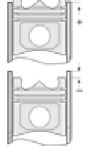
2.385		P	STD
2.385		P	STD
2.385		P	STD
3.160		P	STD
3.160		P	STD



Silindir Gömleği
(Liner)



Silindir Kit
(Assembly Set)



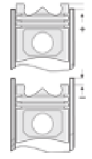
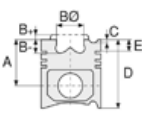
Piston - Blok Montaj
Yüksekliği
(Piston - Block
Assembly Height)





WESTINGHOUSE - Ø 75

87-72244-STD



Motor Özellikleri
(Engine Specifications)

İmalatçı (Manufacturer):
WESTINGHOUSE
Çap (Diameter): Ø 75
FM Grup No: 8902

Hava Kompresörü (Air Compressor)

Dizel
129 P, 136 P, 137 P, 236 P,
237 P, 29 P, 30 P, 337 P,
36 P, 37 P, 38 P, 40 P,
43 P, 46 P, 49 P, 50 P,
52 P, 53 P, 54 P, 67 P

Piston Ölçüleri
(Piston Dimensions)

A : 35.000
D : 65.000
E : 3.500

Pim: 15 x 46



Piston Özellikleri
(Piston Features)

Gözarası Düz
(Flat Eye Gap)

Piston Parça No
(Piston Part No)

87-403600-02
87-72244-STD

87-403607-02
87-72244 050

87-403611-02
87-72244 100

Segman Seti
(Ring Set)

06-403600-00-STD
06-403607-00 0,50 mm
06-403611-00 1,00 mm

3.000 P STD
3.000 P STD
5.000 P STD

Silindir Gömleği
(Liner)

Silindir Kit
(Assembly Set)

Piston - Blok Montaj
Yüksekliği
(Piston - Block
Assembly Height)

