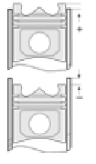
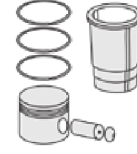
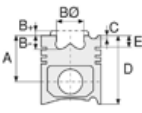




YANMAR - Ø 94

87-72280-STD



**Motor Özellikleri**  
(Engine Specifications)

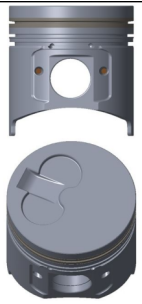
İmalatçı (Manufacturer):  
YANMAR  
Çap (Diameter): Ø 94  
FM Grup No: 939

**4TNE94**

4 Sil. Dizel 26 KW-35 HP  
Forklift, İş Makinası, Marin  
(Forklift, Construction  
Machinery, Marine)

**Piston Ölçüleri**  
(Piston Dimensions)

A : 55.400  
B- : 2.450  
BØ : 62.020  
D : 99.400  
E : 11.600



**Piston Özellikleri**  
(Piston Features)

Segman Taşıyıcı  
(Ring Carrier)  
Çelik Plaka  
(Steel Strut)  
Gözarası Konik  
(Conical Eye Gap)

**Piston Parça No**  
(Piston Part No)

87-857700-02  
87-72280-STD  
  
87-857707-02  
87-72280-0,50

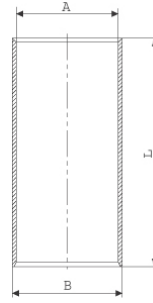
**Segman Seti**  
(Ring Set)

06-857700-00-STD  
06-857707-00 0,50

2.000 NT ST  
2.000 P GOE  
3.000 CR ST

**Silindir Gömleği**  
(Liner)

14-011620-00-DH  
B : 97.000  
L : 190.000



**Silindir Kit**  
(Assembly Set)

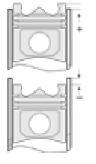
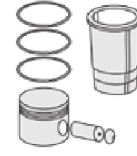
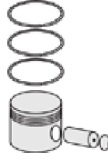
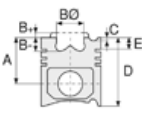
**Piston - Blok Montaj**  
Yüksekliği  
(Piston - Block  
Assembly Height)





YANMAR - Ø 98

87-72281-STD



**Motor Özellikleri**  
(Engine Specifications)

İmalatçı (Manufacturer):  
YANMAR  
Çap (Diameter): Ø 98  
FM Grup No: 940

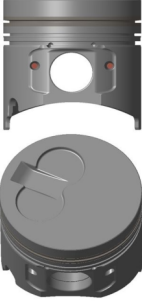
**4TNE98**

4 Sil. Dizel  
Forklift, İş Makinası, Marin  
(Forklift, Construction  
Machinery, Marine)

**Piston Ölçüleri**  
(Piston Dimensions)

A : 55.400  
B- : 2.700  
BØ : 65.980  
D : 99.250  
E : 15.600

Pim: 30 x 72,7



**Piston Özellikleri**  
(Piston Features)

Segman Taşıyıcı  
(Ring Carrier)  
Çelik Plaka  
(Steel Strut)  
Gözarası Konik  
(Conical Eye Gap)

**Piston Parça No**  
(Piston Part No)

87-857800-02  
87-72281-STD  
87-857807-02  
87-72281 0,50

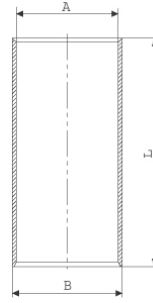
**Segman Seti**  
(Ring Set)

06-857800-00-STD  
06-857807-00 0,50

2.000 NT ST  
2.000 P GOE  
3.000 CR ST

**Silindir Gömleği**  
(Liner)

14-011630-00-D  
B : 101.000  
L : 190.000



**Silindir Kit**  
(Assembly Set)

**Piston - Blok Montaj**  
Yüksekliği  
(Piston - Block  
Assembly Height)

