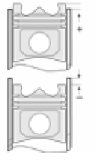
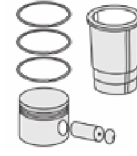
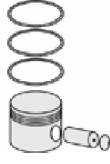
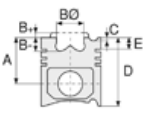




FIAT - Ø 82

87-70725-STD A



**Motor Özellikleri**  
(Engine Specifications)

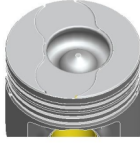
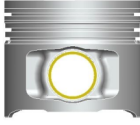
İmalatçı (Manufacturer):  
FIAT  
Çap (Diameter): Ø 82  
FM Grup No: 2822

**182B.9000 EURO 3**  
4 Sil. Dizel 1910cc 77  
Kw (103 PS)  
Turbo Common Rail  
DOBLO 1.9 JTD  
2001...

**Piston Ölçüleri**  
(Piston Dimensions)

A : 46.500  
B - : 17.450  
BØ : 37.550  
BX : 3.000  
BY : 0.500  
C1 : 0.650  
D : 72.500  
E : 8.200

Pim : 26 x 61



**Piston Özellikleri**  
(Piston Features)

Segman Taşıyıcı  
(Ring Carrier)  
Yağ Püskürtme Oyuğu  
(Oil Jet Cut-out)  
Burçlu Piston  
(Bushing Piston)  
Göz Arası Düz  
(Flat Eye Gap)

**Piston Parça No**  
(Piston Part No)

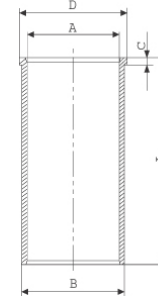
87-124050-22  
87-70725-STD A  
87-124056-22A  
87-70725-040A  
87-124060-22  
87-70725-0,80A

**Segman Seti**  
(Ring Set)

06-124050-00-STD  
06-124056-00-0,40 mm  
06-124060-00-0,80 mm  
2.000 CKP KV1  
2.000 P F14  
2.000 CRP GOE  
Yağ Segmanı Matkap Delik  
(Oil Ring Drill Hole)

**Silindir Gömleği**  
(Liner)

14-020340-00-D  
B : 85.200  
L : 155.000  
D : 86.200  
C : 5.000



**Silindir Kit**  
(Assembly Set)

**Piston - Blok Montaj**  
Yüksekliği  
(Piston - Block  
Assembly Height)

0,77-0,87 mm Conta İle  
(With Gasket) +0,014 / +0,104  
0,87-0,97 mm Conta İle  
(With Gasket) +0,105 / +0,205  
0,97/1,07 mm Conta İle  
(With Gasket) +0,236 / +0,294

