



**Motor Özellikleri**  
(Engine Specifications)

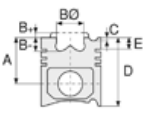
İmalatçı (Manufacturer):  
IVECO TRK - TOYOTA  
Çap (Diameter): Ø 95  
FM Grup No: 4104

**802.000**  
2 Sil. Dizel 1560cc  
18,5 Kw (25 PS)

**803.000 (8030.01)**  
3 Sil. Dizel 2339cc  
28/33/37 Kw  
(38/45/51 PS) 17:1  
570 TURBO, 612 NE,  
616 N2  
1966 - 1971

**804.000 (8040.01)**  
4 Sil. Dizel 3119cc  
40/51,5 Kw (54/70 PS) 17:1  
616 N2, 616 N4, 625 N1,  
625 N2, ORSETTO  
15L, 15N  
1968 - 1971

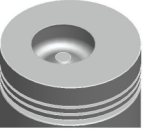
**806.000**  
(**8060.01/11**)  
6 Sil. Dizel 4678cc 81  
Kw (110 PS) 17:1  
UTB İle Ortak Motor  
(Common Engine With  
UTB)  
416 A TRAKTOR, 645 N1,  
645 N2, 650 N1, 650 N2,  
655 N, 662 N1, 662 N2,  
672 N2  
1960 - 1971



**Piston Ölçüleri**  
(Piston Dimensions)

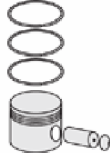
A : 59.650  
B- : 23.500  
BØ : 42.500  
BX : 5.000  
D : 101.150  
E : 19.600

Pim: 32 x 84



**Piston Özellikleri**  
(Piston Features)

Gözarası Düz  
(Flat Eye Gap)



**Piston Parça No**  
(Piston Part No)

87-207200-02  
87-70754-STD  
87-207206-02  
87-70754 040  
87-207208-02  
87-70754 060

87-207211-02  
87-70754 100



**Segman Seti**  
(Ring Set)

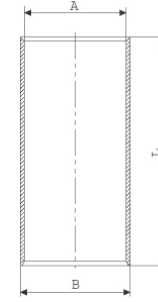
06-207200-10-STD  
06-207206-10 0,40 mm  
06-207208-10 0,60 mm  
06-207211-10 1,00 mm

2.500 CRP KV1  
2.500 P IKA  
5.500 CRP STD



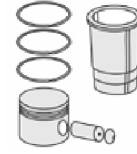
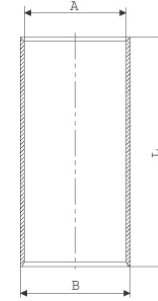
**Silindir Gömleği**  
(Liner)

14-010620-00-D  
B : 99.000  
L : 187.000

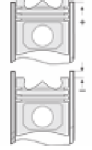


14-019870-00-D

B : 103.000  
L : 187.000



**Silindir Kit**  
(Assembly Set)



**Piston - Blok Montaj**  
Yüksekliği  
(Piston - Block  
Assembly Height)

+ 0,46 / + 0,79

