



FORD LKW - Ø 104,77

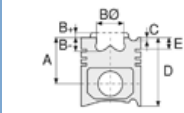
87-70909-STD



Motor Özellikleri
(Engine Specifications)

İmalatçı (Manufacturer):
FORD LKW
Çap (Diameter): Ø 104,77
FM Grup No: 3050

DOVER 6.0 TCI
6 Sil. Dizel 5946cc
185 PS
Turbo Intercooled
CARGO 2520
1992....



Piston Ölçüleri
(Piston Dimensions)

A : 71.250
B - : 21.500
BØ : 55.000
BX : 5.000
C1 : 2.300
D : 119.900
E : 18.300

Pim: 41 x 87,12



Piston Özellikleri
(Piston Features)

Segman Taşıyıcı
(Ring Carrier)
Sert Anotlama
(Hard Anodizing)
Gözarası Konik
(Conical Eye Gap)



Piston Parça No
(Piston Part No)

87-843000-23
87-70909-STD1C
0,20 mm Kısa
(Short)
87-843000-24
87-70909-STD2C
0,40 mm Kısa
(Short)
87-843000-22
87-70909-STD

87-835800-33
87-70909-STD1F
0,20 mm kısa
(short)

87-835800-34
87-70909-STD2F
0,40 mm Kısa
(Short)

87-835800-32
87-70909-STD



Segman Seti
(Ring Set)

06-843000-00-STD
3.000 PSP KV1
2.500 P STD
4.000 P IKA
Goetze® LKZ-Ring®

06-835800-80-STD

3.000 CK KV1
2.500 STD
4.000 CR STD

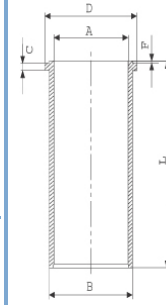
İçi Krom Kaplı Gömlekte
Kullanılmaz / (Inside
Chrome Plated Not Used
on Shirts)

Goetze® LKZ-Ring®



Silindir Gömleği
(Liner)

14-040301-00-DH
B : 108.975
L : 218.507
D : 112.586
C : 4.737
F : 0.700



İçi Krom Kaplı No 1
(Inside Chrome Plated
No 1)

14-040302-00-DH
B : 108.988
L : 218.507
D : 112.586
C : 4.737
F : 0.700

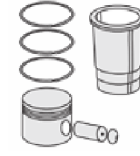
İçi Krom Kaplı No 2
(Inside Chrome Plated
No 2)

14-040303-00-DH
B : 109.001
L : 218.507
D : 112.586
C : 4.737
F : 0.700

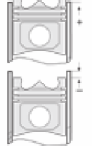
İçi Krom Kaplı No 3
(Inside Chrome Plated
No 3)

14-040304-00-DH
B : 109.014
L : 218.507
D : 112.586
C : 4.737
F : 0.700

İçi Krom Kaplı No 4
(Inside Chrome Plated
No 4)



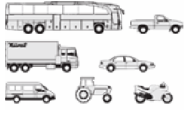
Silindir Kit
(Assembly Set)



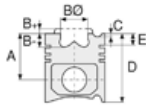
Piston - Blok Montaj
Yüksekliği
(Piston - Block
Assembly Height)

+0,30/+0,40





Motor Özellikleri
(Engine Specifications)



Piston Ölçüleri
(Piston Dimensions)



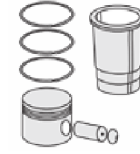
Piston Parça No
(Piston Part No)



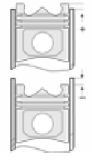
Segman Seti
(Ring Set)



Silindir Gömleği
(Liner)



Silindir Kit
(Assembly Set)



Piston - Blok Montaj
Yüksekliği
(Piston - Block
Assembly Height)

14-040305-00-DH
B : 109.177
L : 218.507
D : 112.586
C : 4.737
F : 0.700

İçi Krom Kaplı No 5
(Inside Chrome Plated
No 5)

14-040306-00-DH
B : 109.305
L : 218.507
D : 112.586
C : 4.737
F : 0.700

İçi Krom Kaplı No 6
(Inside Chrome Plated
No 6)

14-040307-00-DH
B : 109.433
L : 218.507
D : 112.586
C : 4.737
F : 0.700

İçi Krom Kaplı No 7
(Inside Chrome Plated
No 7)

14-040308-00-DH
B : 109.561
L : 218.507
D : 112.586
C : 4.737
F : 0.700

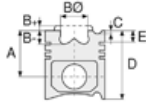
İçi Krom Kaplı No 8
(Inside Chrome Plated
No 8)

14-041950-00-D
B : 109.050
L : 218.510
D : 112.586
C : 4.737
F : 0.700

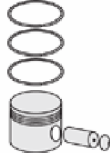




Motor Özellikleri
(Engine Specifications)



Piston Ölçüleri
(Piston Dimensions)



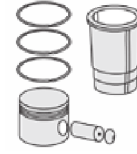
Piston Parça No
(Piston Part No)



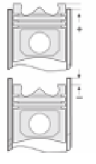
Segman Seti
(Ring Set)



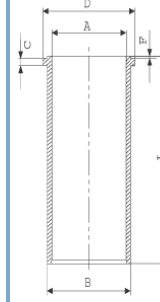
Silindir Gömleği
(Liner)



Silindir Kit
(Assembly Set)



Piston - Blok Montaj
Yüksekliği
(Piston - Block
Assembly Height)



14-041954-00-D
B : 109.300
L : 218.510
D : 112.586
C : 4.737
F : 0.700

Dış Çap 0,25mm Farklı
(Outside Diameter
0,25 mm Different)

14-041955-00-D
B : 109.550
L : 218.510
D : 112.586
C : 4.737
F : 0.700

Dış Çap 0,50mm Farklı
(Outside Diameter
0,50 mm Different)

14-041956-00-D
B : 110.050
L : 218.510
D : 113.000
C : 5.000
F : 0.700

Dış Çap 1,00mm Farklı
(Outside Diameter
1,00 mm Different)

14-041957-00-D
B : 109.100
L : 218.510
D : 112.586
C : 4.737
F : 0.700

Dış Çap 0,05mm Farklı
(Outside Diameter
0,05 mm Different)

