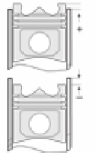
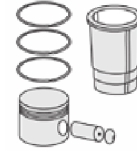
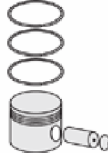
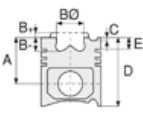




ISUZU - Ø 115

87-71222-STD



**Motor Özellikleri**  
(Engine Specifications)

İmalatçı (Manufacturer):  
ISUZU  
Çap (Diameter): Ø 115  
FM Grup No: 3930

**6HK1**

6 Sil. Dizel 271 HP-202  
KW  
CASE, HITACHI,  
HİDROMEK, SUMITOMO

**Piston Ölçüleri**  
(Piston Dimensions)

A : 66.000  
B- : 18.800  
BØ : 61.850  
D : 119.900  
E : 13.050

Pim: 40 x 87



**Piston Özellikleri**  
(Piston Features)

Segman Taşıyıcı  
(Ring Carrier)  
Soğutma Kanallı  
(Coolin Gallery)  
(Steel Strut)  
Yağ Püskürtme Oyuğu  
(Oil Jet Cut-out)  
Gözarası Konik  
(Conical Eye Gap)

**Piston Parça No**  
(Piston Part No)

87-852600-02  
87-71222-STD

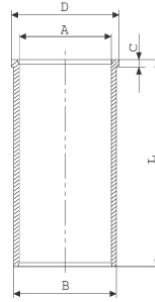
**Segman Seti**  
(Ring Set)

06-852600-00-STD

2.941 PVD NT  
2.000 NT ST  
2.500 CT GOE  
3.000 NT ST

**Silindir Gömleği**  
(Liner)

14-022390-00-DH  
B : 118.000  
L : 210.000  
D : 123.700  
C : 6.100



Tüm yüzeyler  
fosfat kaplı  
(ALL SURFACES  
PHOSPHATE COATED)

14-022391-00 DH  
B : 118.250  
L : 210.000  
D : 123.950  
C : 6.350

Dış çap 0,25 mm farklı  
(Outer diameter  
0,25 mm different)

14-022392-00 DH  
B : 118.500  
L : 210.000  
D : 124.200  
C : 6.600

Dış çap 0,50 mm farklı  
(Outer diameter  
0,50 mm different)

**Silindir Kit**  
(Assembly Set)

**Piston - Blok Montaj**  
Yüksekliği  
(Piston - Block  
Assembly Height)

