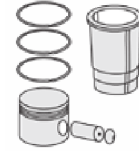




TOYOTA - Ø 80,5

87-72072-STD



Motor Özellikleri
(Engine Specifications)

İmalatçı (Manufacturer):
TOYOTA
Çap (Diameter): Ø 80,5
FM Grup No: 8209

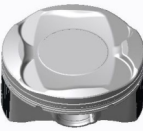
1ZR-FE & 1ZR-FAE
1.6L 16V

4 Sil. Benzinli 1598cc
91-97 KW / 124-132 PS
AURIS, AVANSİS,
COROLLA, VERSO
2007...

Piston Ölçüleri
(Piston Dimensions)

A : 33.420
B : 2.480
C1 : 2.590
C2 : 3.120
D : 52.520
E : 6.200

Pim: 20 x 50



Piston Özellikleri
(Piston Features)

Sert Anotlama
(Hard Anodizing)
Gözarası Konik
(Conical Eye Gap)

Piston Parça No
(Piston Part No)

87-898800-02
87-72072-STD
87-898807-02
87-72072 0,50

Segman Seti
(Ring Set)

06-898800-00-STD
06-898807-00 0,50 mm
1.000 PVD ST
1.000 CR KV1
1.500 PVD ST

Silindir Gömleği
(Liner)

Silindir Kit
(Assembly Set)

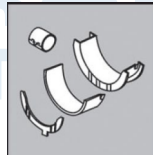
Piston - Blok Montaj
Yüksekliği
(Piston - Block
Assembly Height)

ANA YATAK
(MAIN BEARING)



H1321/5 STD

KOL YATAK
(ARM BED)



01/4893/4 STD

