



**Motor Özellikleri**  
(Engine Specifications)

İmalatçı (Manufacturer):  
SAAB SCANIA  
Çap (Diameter): Ø 127  
FM Grup No: 7555

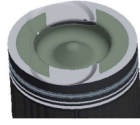
**DSC11**  
6 Sil. Dizel 11020cc  
220KW (299PS)  
TURBO INTERCOOLED  
Endüstriyel (Industrial)  
1989....

**DS11**  
6 Sil. Dizel 11020cc 15:1  
TURBO  
Endüstriyel (Industrial)  
1969 - 1991

**Piston Ölçüleri**  
(Piston Dimensions)

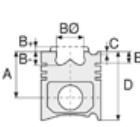
A : 98.760  
B- : 26.740  
BØ : 75.500  
C1 : 2.960  
C2 : 2.960  
D : 156.260  
E : 23.200

Pim: 50 x 107,8



**Piston Özellikleri**  
(Piston Features)

Segman Taşıyıcı  
(Ring Carrier)  
Sert Anotlama  
(Hard Anodizing)  
Yağ Püskürtme Oyuğu  
(Oil Jet Cut-out)  
Gözarası Konik  
(Conical Eye Gap)



**Piston Parça No**  
(Piston Part No)

87-962000-84  
87-73732-STD



**Segman Seti**  
(Ring Set)

06-962000-20-STD

3.500 CR KV1  
2.385 STD  
4.747 CR STD

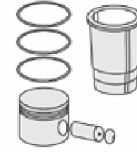
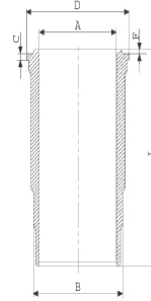
Goetze® LKZ-Ring®



**Silindir Gömleği**  
(Liner)

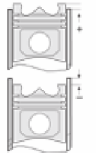
14-450390-00WH

B : 140.000  
L : 291.000  
D : 153.700  
C : 7.900  
F : 0.800  
R : 21.950



**Silindir Kit**  
(Assembly Set)

88-962000-84-STD  
88-73732-STD



**Piston - Blok Montaj**  
Yüksekliği  
(Piston - Block  
Assembly Height)

