



RVI - Ø 135,03

87-71150-STD



**Motor Özellikleri**  
(Engine Specifications)

İmalatçı (Manufacturer):  
RVI  
Çap (Diameter): 135,03  
FM Grup No: 7435

**MIDR 635,40 G2**  
6 Sil. Dizel 12024cc  
255-275 Kw (346-374 Ps)  
CBH 340, MAGNUM 380,  
R310, R330  
1987 - 1995

**Piston Ölçüleri**  
(Piston Dimensions)

A : 90.300  
B- : 25.950  
BØ : 77.950  
BX : 7.250  
BY : 5.000  
C1 : 0.700  
D : 170.200  
E : 22.000

Pim: 55 x 112



**Piston Özellikleri**  
(Piston Features)

Segman Taşıyıcı  
(Ring Carrier)  
Yağ Püskürtme Oyuğu  
(Oil Jet Cut-out)  
Gözarası Düz  
(Flat Eye Gap)

**Piston Parça No**  
(Piston Part No)

87-335900-62  
87-71150-STD

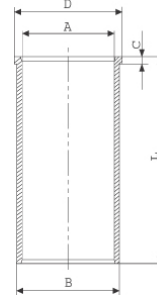
**Segman Seti**  
(Ring Set)

06-335900-80-STD  
4.000 CK KV1  
3.000 STD  
4.000 CR STD

Goetze® LKZ-Ring®

**Silindir Gömleği**  
(Liner)

14-020330-00-DH  
B : 143.000  
L : 286.400  
D : 149.000  
C : 7.400



Dış yüzeyi fosfat kaplı  
(Outer Surface  
Phosphate Coated)

**Silindir Kit**  
(Assembly Set)

**Piston - Blok Montaj**  
Yüksekliği  
(Piston - Block  
Assembly Height)



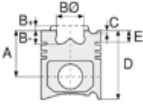


RVI - Ø 135,03

87-71150-STD



**Motor Özellikleri**  
(Engine Specifications)



**Piston Ölçüleri**  
(Piston Dimensions)



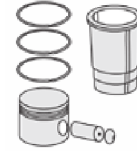
**Piston Parça No**  
(Piston Part No)



**Segman Seti**  
(Ring Set)



**Silindir Gömleği**  
(Liner)

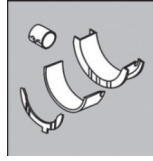


**Silindir Kit**  
(Assembly Set)



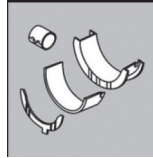
**Piston - Blok Montaj**  
**Yüksekliği**  
(Piston - Block  
Assembly Height)

**ANA YATAK**  
(MAIN BEARING)



H1054/7 STD

**KOL YATAK**  
(ARM BED)

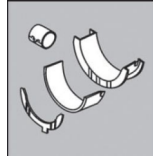


71-4113 STD

71-4239 STD

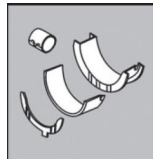
71-4306 STD

**AY YATAK**  
(THRUST WASHER)



A264/4 STD

**KOL BURCU**  
(SMALL END BUSH)



55-4124 SEMI

**SİL. KAPAK. CONTA**  
(CYLINDER HEAD GASKET)



DW050

