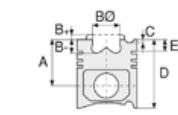




**Motor Özellikleri**  
(Engine Specifications)

İmalatçı (Manufacturer):  
Saab-Scania  
Çap (Diameter): 127  
FM Grup No: 7513

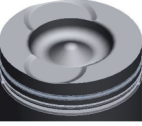
**DSC 14.05/06**  
8 Sil. Dizel 14181cc  
290/309 Kw (394/  
420 PS) 16:1  
Turbocharged Intercooled  
R142, T142  
1986....



**Piston Ölçüleri**  
(Piston Dimensions)

A : 94.670  
B- : 24.000  
BØ : 75.100  
C1 : 2.920  
D : 146.670  
E : 23.250

Pim: 50 x 107,8



**Piston Özellikleri**  
(Piston Features)

Segman Taşıyıcı  
(Ring Carrier)  
Yağ Püskürtme Oyuğu  
(Oil Jet Cut-out)  
Gözarası Konik  
(Conical Eye Gap)



**Piston Parça No**  
(Piston Part No)

87-962000-43  
87-71908-STDA



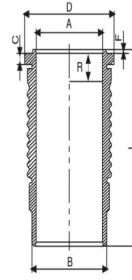
**Segman Seti**  
(Ring Set)

06-962000-20-STD  
3.500 CR KV1  
2.385 STD  
4.747 CR STD  
Goetze® LKZ-Ring®

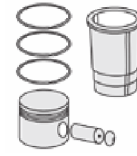


**Silindir Gömleği**  
(Liner)

14-671680-00-WH  
B : 140.000  
L : 276.000  
D : 156.000  
C : 10.100  
F : 0.400  
R : 21.500

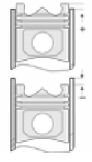


O-RING BİLGİ (O-Ring  
Information)  
24-35047-90/O  
2x 140\*4 FPM 70  
1x 138\*143\*11  
1x 1X TOMBAK  
148,1\*153,7\*



**Silindir Kit**  
(Assembly Set)

89-962000-43-STD  
89-71908-STDA



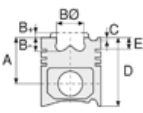
**Piston - Blok Montaj**  
Yüksekliği  
(Piston - Block  
Assembly Height)

- 0,16 / - 0,54

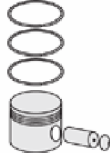




Motor Özellikleri  
(Engine Specifications)



Piston Ölçüleri  
(Piston Dimensions)



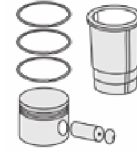
Piston Parça No  
(Piston Part No)



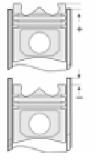
Segman Seti  
(Ring Set)



Silindir Gömleği  
(Liner)

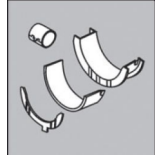


Silindir Kit  
(Assembly Set)



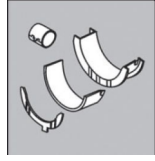
Piston - Blok Montaj  
Yüksekliği  
(Piston - Block  
Assembly Height)

**ANA YATAK  
(MAIN BEARING)**



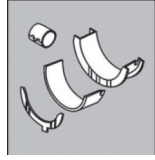
H1060/5 STD

**KOL YATAK  
(ARM BED)**



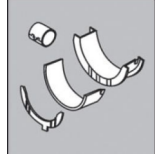
71-4249/8 STD

**EKSANTRİK YATAK  
(ECCENTRIC BEARING)**



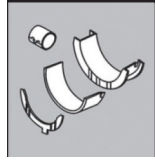
N197/4 SEMI

**AY YATAK  
(THRUST WASHER)**



A216/4 STD

**KOL BURCU  
(SMALL END BUSH)**



55-4240 SEMI

**SİL. KAPAK. CONTA  
(CYLINDER HEAD GASKET)**



DB140

DV270

